

How to install the network driver with the All Main Ethernet Controller

Ethernet Controller All Main is software that installs network card drivers on computers and laptops to help users access the Internet quickly.

To install the network card driver on the computer, the laptop can use the Ethernet Controller software, with a simple and quick installation.

Re-checking computer drivers including network drivers is essential when we install Windows on a PC or laptop. Without full installation of drivers, the computer will not be able to use normal functions. For example, users will not be able to listen to gaming music if they do not install an audio driver, a video card, or cannot connect to the Internet without installing a network card driver, .

To make it easier to install drivers on your computer, there are many automatic driver software such as SnailDriver , DriverPack Solution , . or Ethernet Controller that install network drivers that the Network Administrator wants to recommend to readers in posts. So how to install the network driver using Ethernet Controller?

1. 5 basic ways to update, update drivers for computers
2. 2 simple ways to update VGA driver for computer monitor, laptop
3. Summary of websites to download and download drivers for computers and laptops

Step 1:

First, we need to use a computer with a network connection and then download the software. Next will transfer the software to the computer that needs to install the network driver to proceed with the installation.

You can access the link below to download the software.

1. http://www.3dpchip.com/3dpchip/3dp/net_down_vi.php

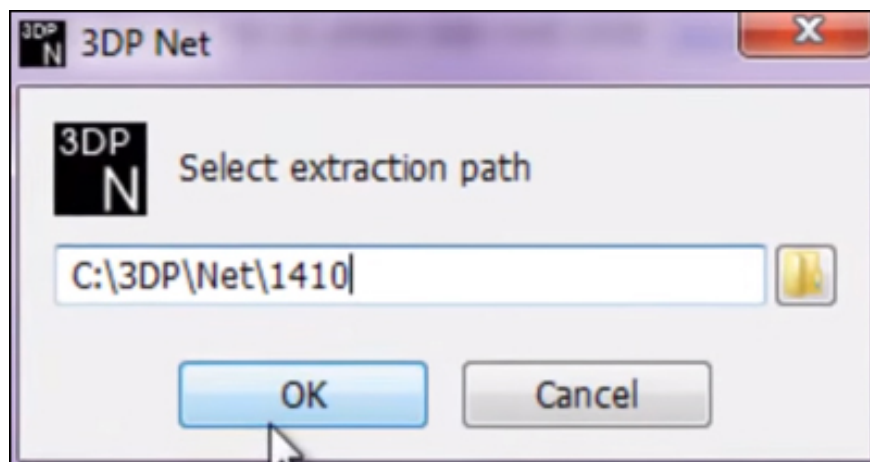
Step 2:

At this interface you can click **Server 1** or **Server 2** to download the software to your computer.

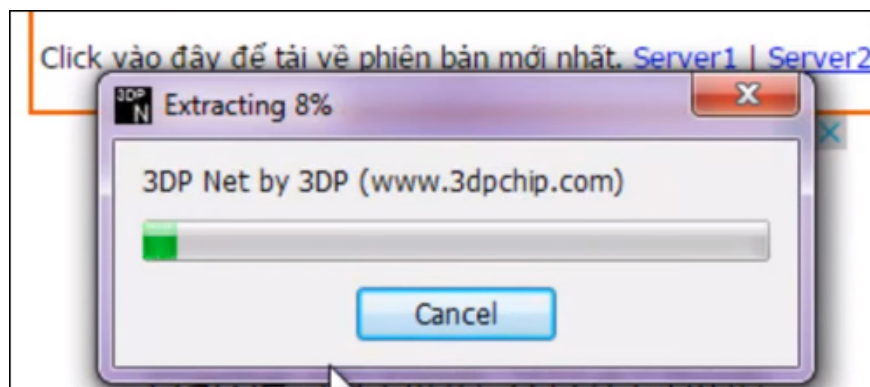


Step 3:

Copy the software to the computer you want to install the network driver to perform the operation. Click the **.exe installation file** to install the Ethernet Controller software. In the first interface, click OK to extract the data into the default folder C: 3DPNet1410.

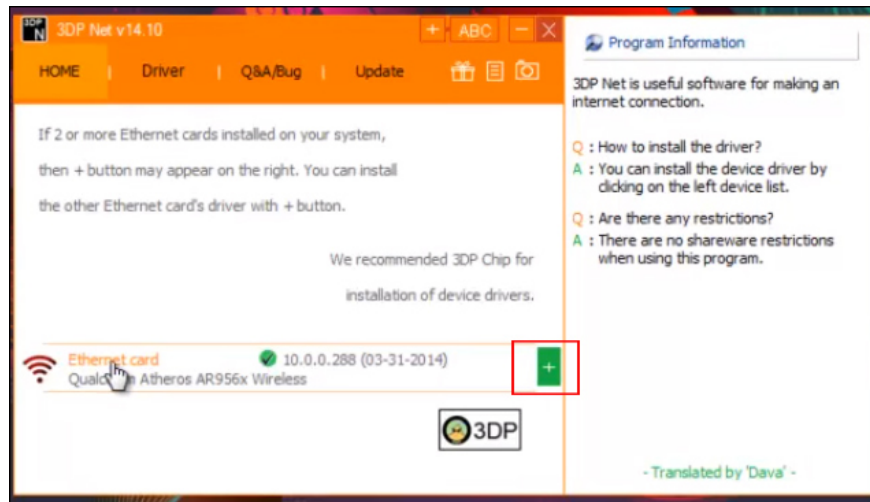


We wait for the Extracting extract process to complete.



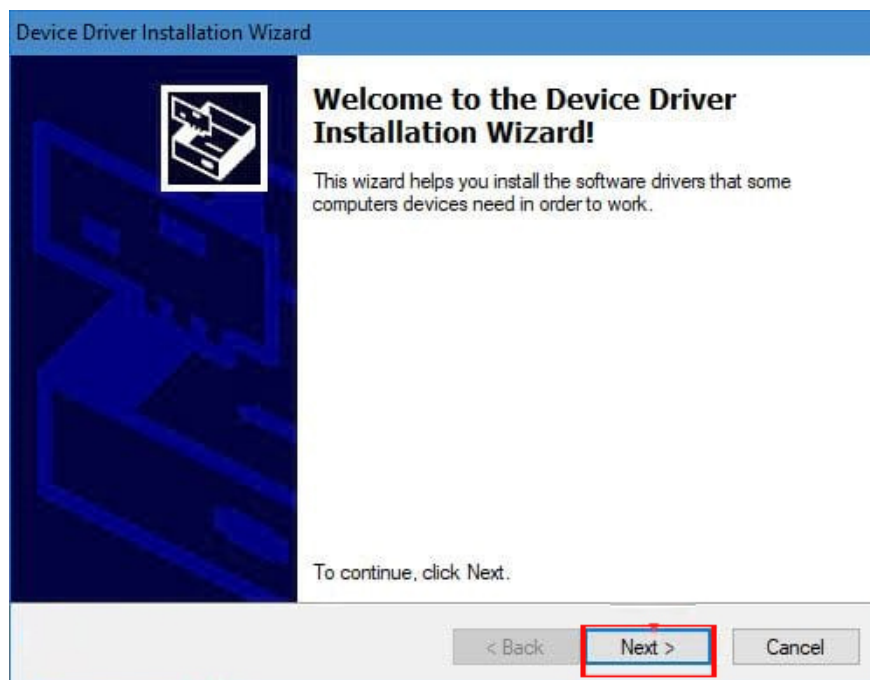
Step 4:

When finished, the software interface will appear. The program will proceed to detect the network card for the computer. When you see the network card in the Ethernet Controller interface, click on **the blue plus icon**, as shown below.



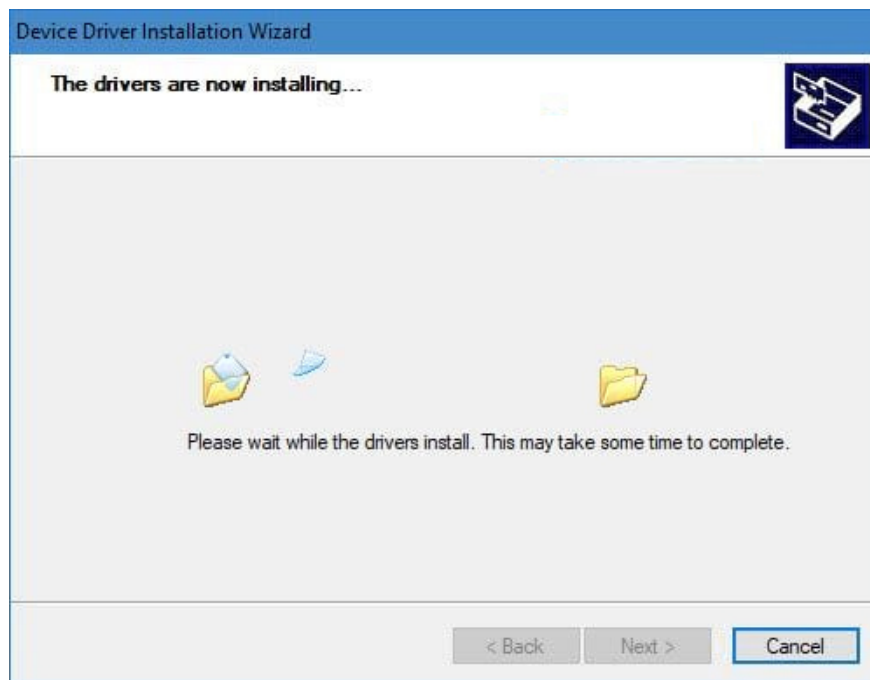
Step 5:

When you click, the software installation interface will appear, click **the Next button** below.



Step 6:

Next is to install the network card driver for the computer using the Ethernet Controller software.



Finally when you have finished installing the network driver, we just need to **click Finish** to finish.



So the desktop or laptop has installed the network card driver with the Ethernet Controller software. The operation is extremely simple and fast, just start the software after the installation is complete to find the network card driver is complete. The tool will automatically detect the network driver that is appropriate for the computer you need to install.

I wish you all success!

You finished reading the article "**How to install the network driver with the All Main Ethernet Controller**" edited by the [TipsMake](#) team. We hope this article has provided you with many useful tech tips and tricks. You can search for similar articles on tips and guides. Thank you for reading and for following us regularly.

