

How to install the latest version of TeamViewer 15 to remotely control a computer.

TeamViewer 15 is a popular remote computer control software that allows users to easily connect to and support other devices. With its user-friendly interface and powerful features, installing TeamViewer allows you to access computers from anywhere, serving your work and technical support needs effectively.

Recently, **TeamViewer 15** was updated, bringing users more features such as cross-platform use, unattended access, primary user control, high-definition streaming, fast file transfer, etc., allowing for easy remote computer control . To use it, you first need to download TeamViewer 15 to your computer and then proceed with the installation.

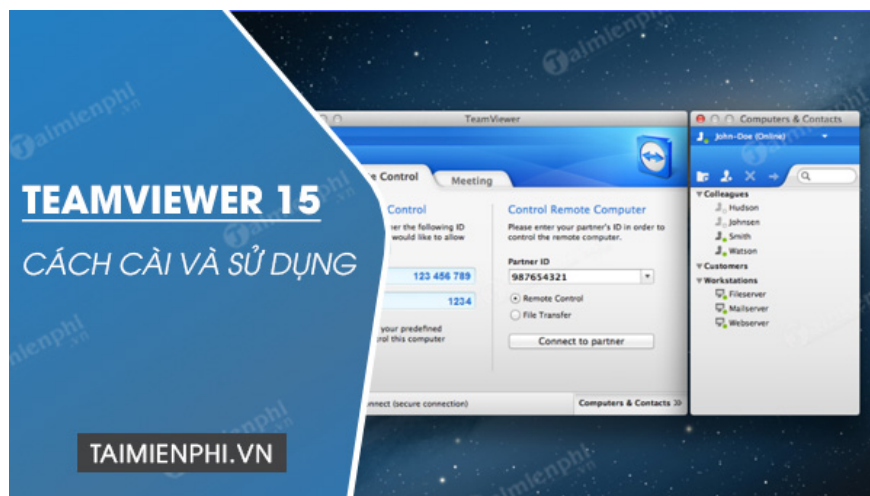


Table of Contents:

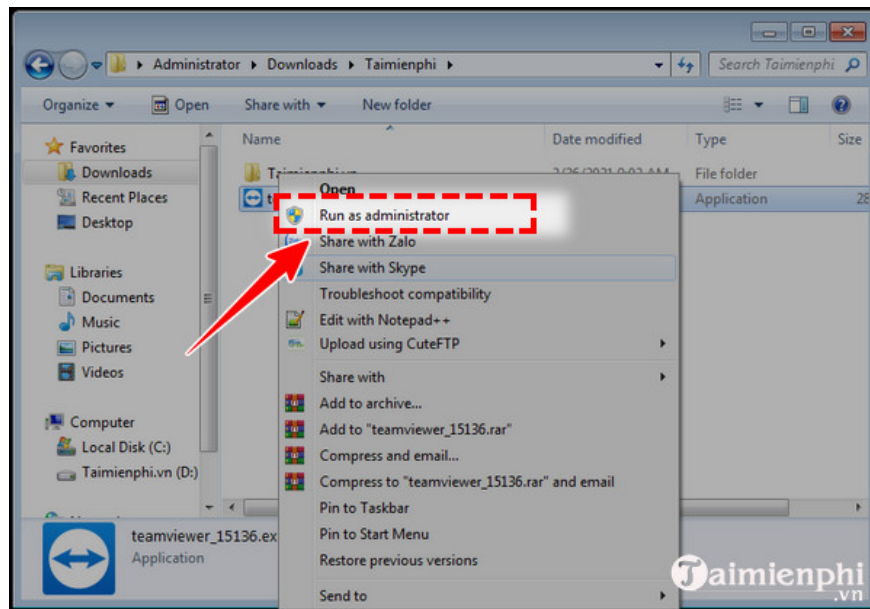
1. How to install TeamViewer 15.
2. How to use TeamViewer .

How to install TeamViewer 15 on your computer

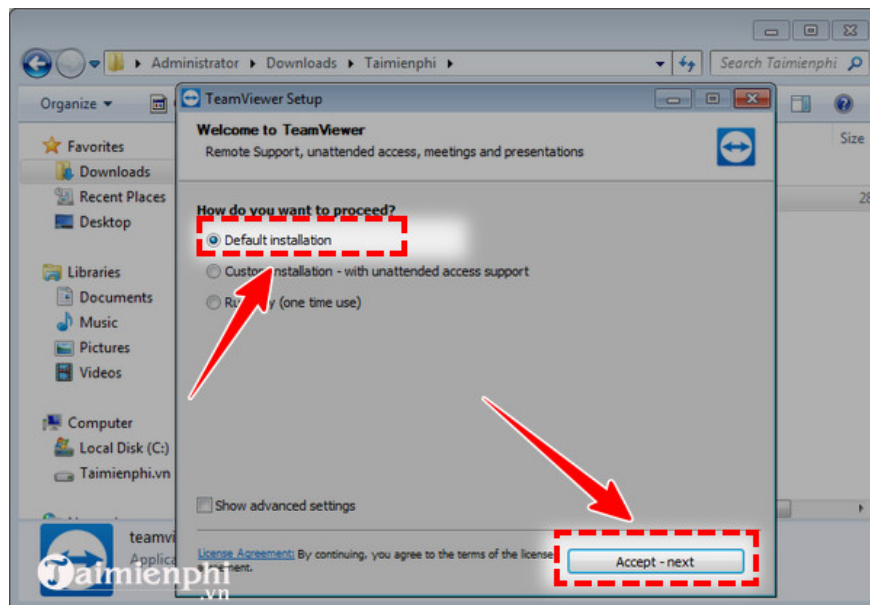
Step 1 : To install and use the latest version of TeamViewer 15, depending on your operating system (32-bit or 64-bit), download the corresponding software installer.

- Download TeamViewer 15.52.4 32-bit [here](#)
- Download **TeamViewer 15.52.4 64-bit** [here](#)

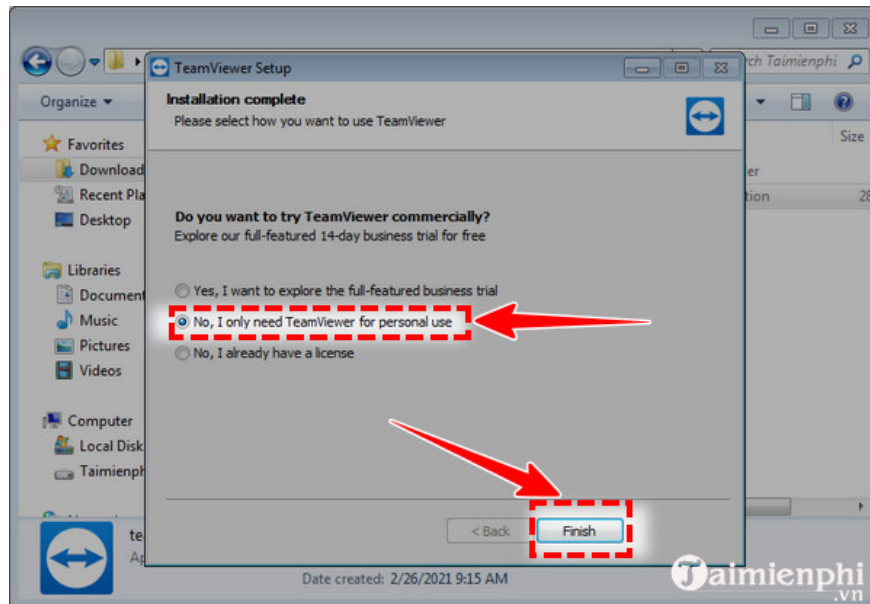
Step 2 : Access the folder containing the TeamViewer 15 file you just downloaded, double-click or right-click and select **Run as administrator** .



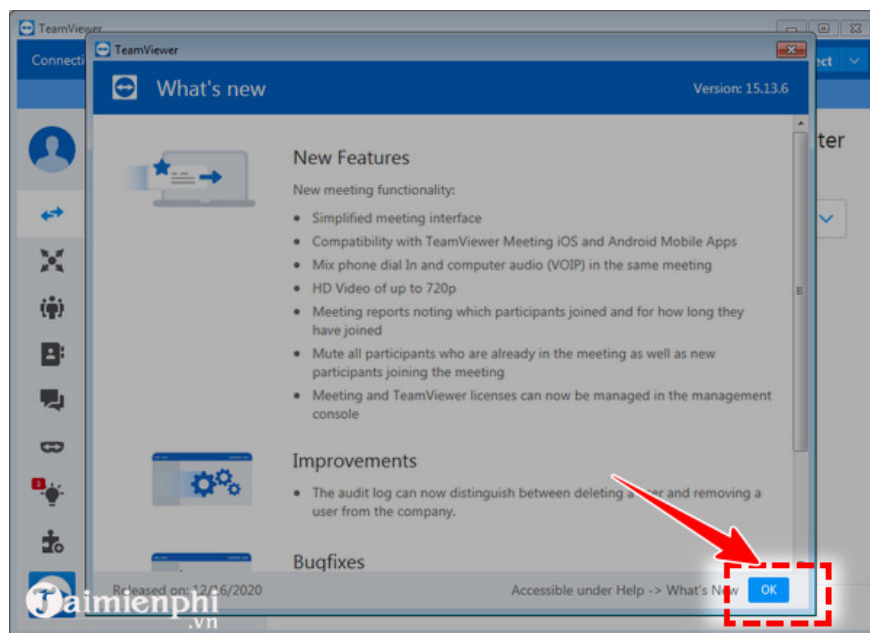
Step 3 : TeamViewer will appear. Under " **How do you want to proceed,** " click on " **Default installation ,**" then click on " **Accept-next .**"



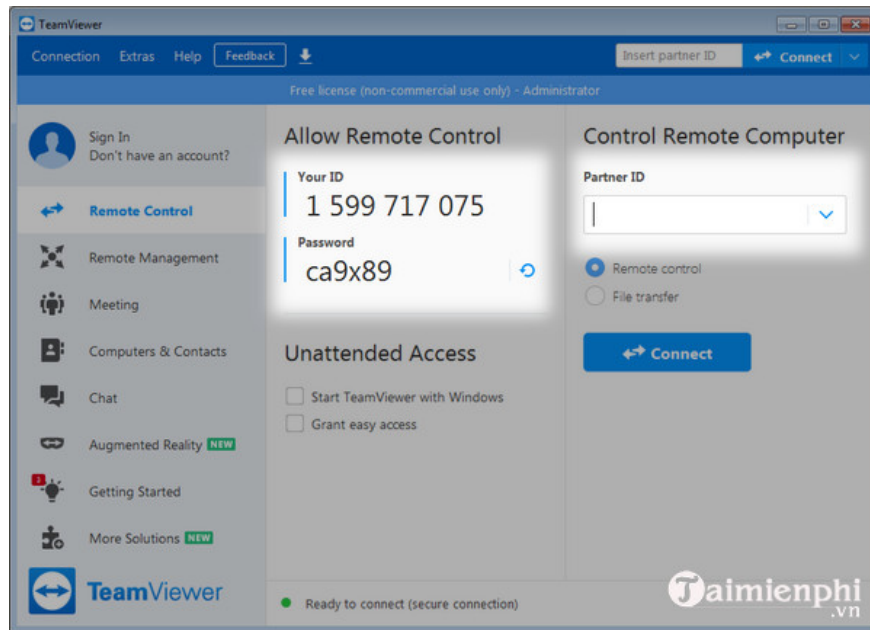
Step 4 : After a few seconds, TeamViewer will display a new interface. Under " **Do you want to try TeamViewer commercially** ", click " **No, I only need TeamViewer for personal use** " and then click " **Finish** " .



Step 5 : Click " OK " in the bottom right corner of the TeamViewer interface to complete the installation process.



At this point, the main TeamViewer interface will appear. You simply need to enter **the Partner ID and Password** provided by the other person, or you can give **your ID** to someone else so they can use your computer.

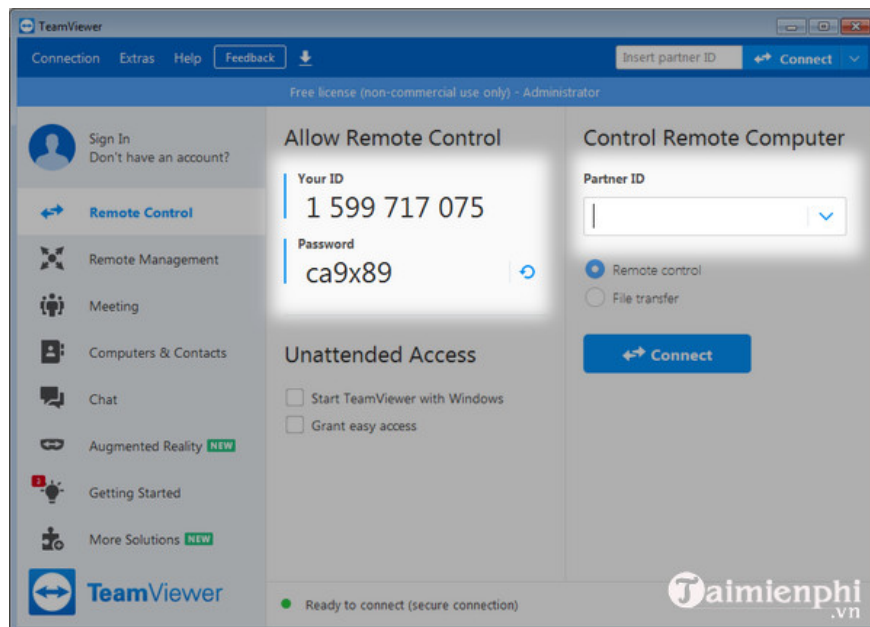


Instructions for using TeamViewer 15 to remotely control a computer.

Step 1: Open **TeamViewer 15** on your device.

Step 2 : The TeamViewer interface will appear. It contains important information such as:

- **Your ID** : TeamViewer provides a 9-digit code to your computer, which remains unchanged as long as you keep your computer and ID enabled.
- **Password** : A 4-digit password that changes each time you open TeamViewer.



Step 3 : To control the computer remotely, the computer must also have TeamViewer installed (ideally, the same version should be installed on the remote computer, such as TeamViewer 15). In the **Partner ID** section , **enter the remote computer's ID** and click "**Connect**". TeamViewer will then display a **password** field ; enter it there. Finally, click "**Connect**" to access the remote computer.

Install TeamViewer 15 to use the application effectively, control computers remotely, and easily solve tasks even when you're not physically at the computer. Additionally, you can **set a permanent TeamViewer password** to access the computer remotely instead of relying on random password generation.

You finished reading the article "**How to install the latest version of TeamViewer 15 to remotely control a computer.**" edited by the [TipsMake](#) team. We hope this article has provided you with many useful tech tips and tricks. You can search for similar articles on tips and guides. Thank you for reading and for following us regularly.