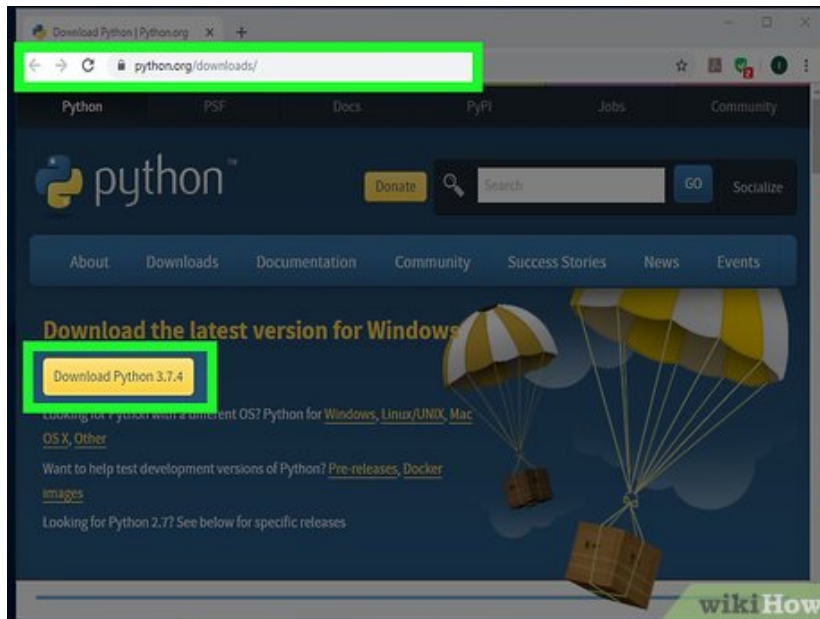


How to Install Python on Windows

If you want to start programming in Python on your Windows PC, you'll need to download and install a version of Python. This wikiHow teaches you how to install Python (2 or 3) using the official Windows installer, as well as how to fix the...

Method 1 of 3:

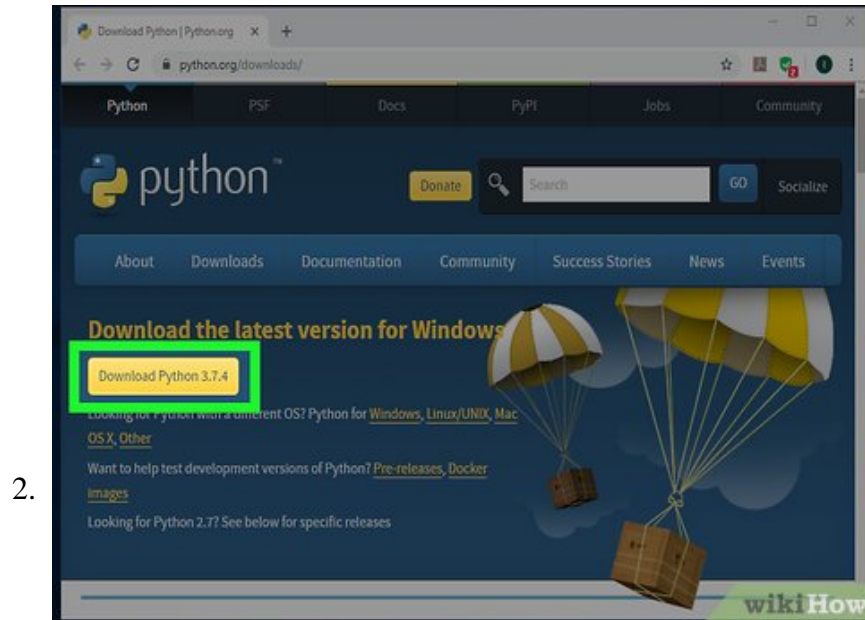
Installing Python 3



1.

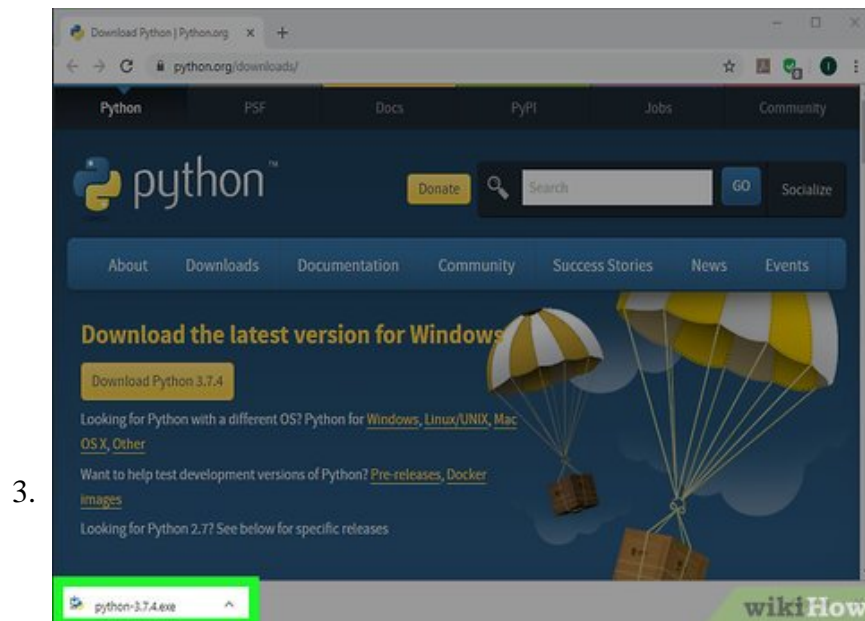
Go to <https://www.python.org/downloads>. The most recent version of Python will always appear on the "Download" button near the top of the page.

1. If you want to use Python 2, see the "Installing Python 2" method.



Click **Download Python**. If this does not start the download immediately, click **Save** on the pop-up window to start it.

1. Python 3.7 and newer will run on any Windows operating system except Windows XP. If you need to install Python 3 on XP, scroll down and click **Download** next to the most recently-updated version of Python 3.4.^[1]

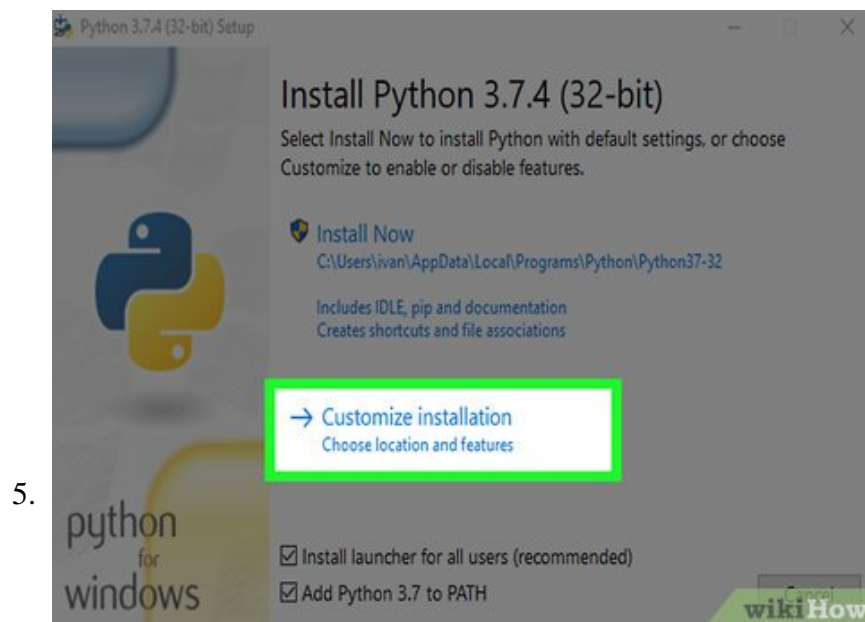


Run the installer. You can do so by double-clicking **python-.exe** in your Downloads folder.

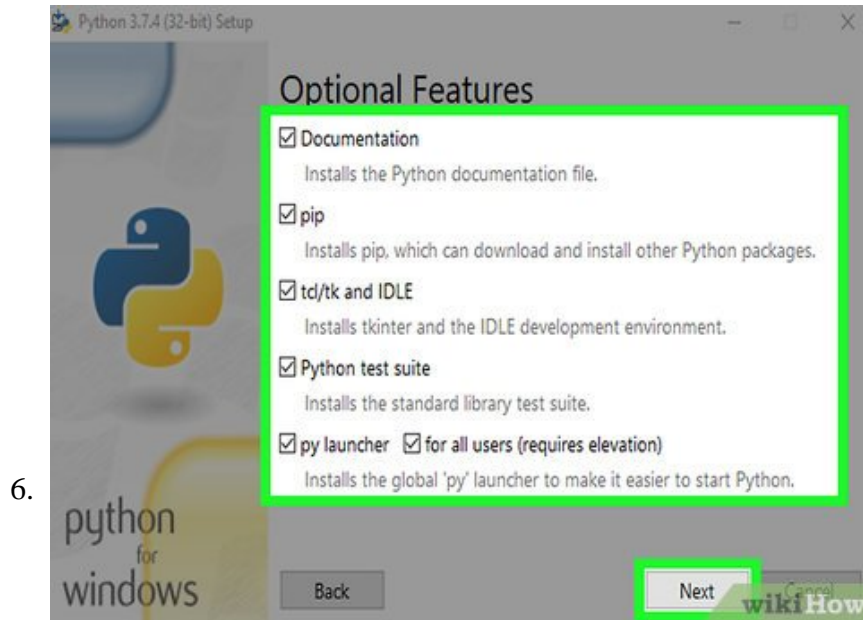


Check the box next to "Add Python to PATH." It's at the bottom of the window.

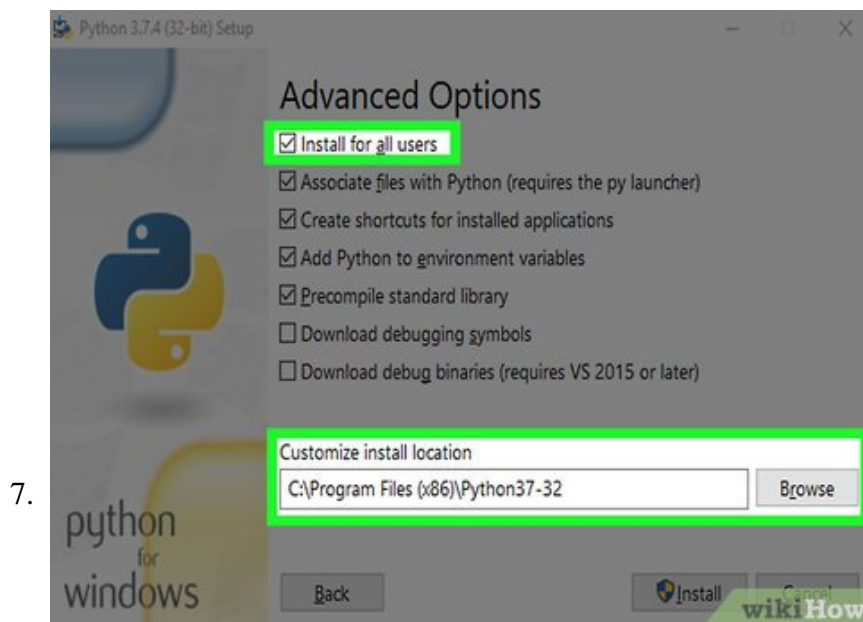
1. If you don't see this option, you'll need to complete this method after you finish installing Python.



Click **Customize installation**. It's the second blue link on the window.

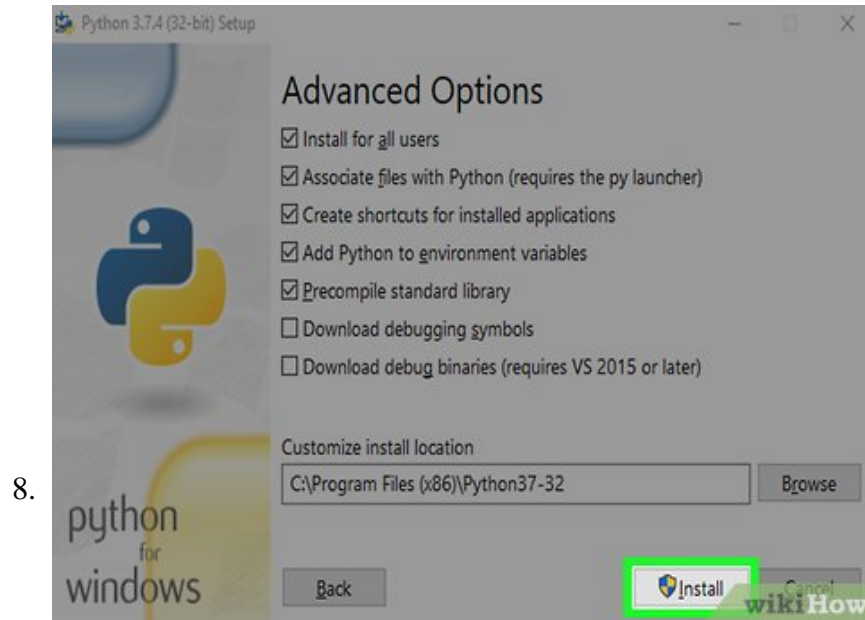


Review the installation options and click `Next`. All of Python's features are selected by default. Unless you have a specific need to skip installing any part of this package, just leave these settings alone.

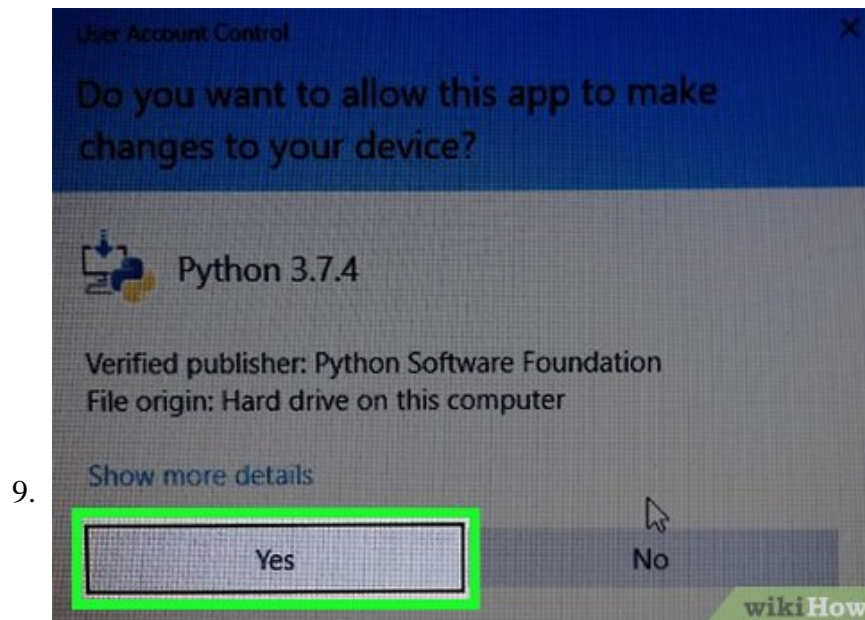


Check the box next to "Install for all users." If you're a system administrator, this option ensures that other users on this computer are able to use Python. This also changes the installation location to the `Program Files (x86) Python (version)` instead of your personal library.

1. If you didn't have the option to select "Add Python to PATH" earlier, make note of the installation directory that appears here. You'll need to add it to your system variables after installing.
2. If you don't want anyone else on the computer to be able to use Python, you can leave the box unchecked.

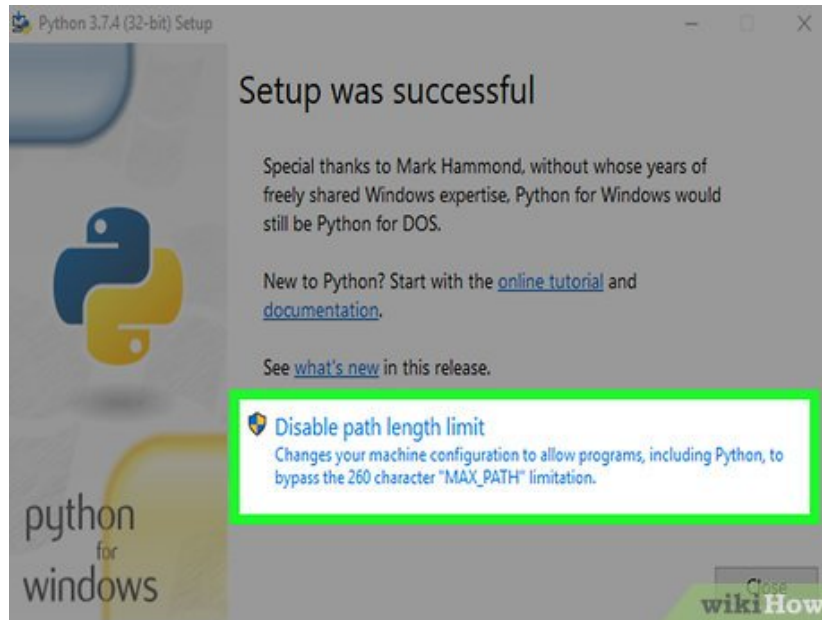


Click **Install**. It's at the bottom of the window.



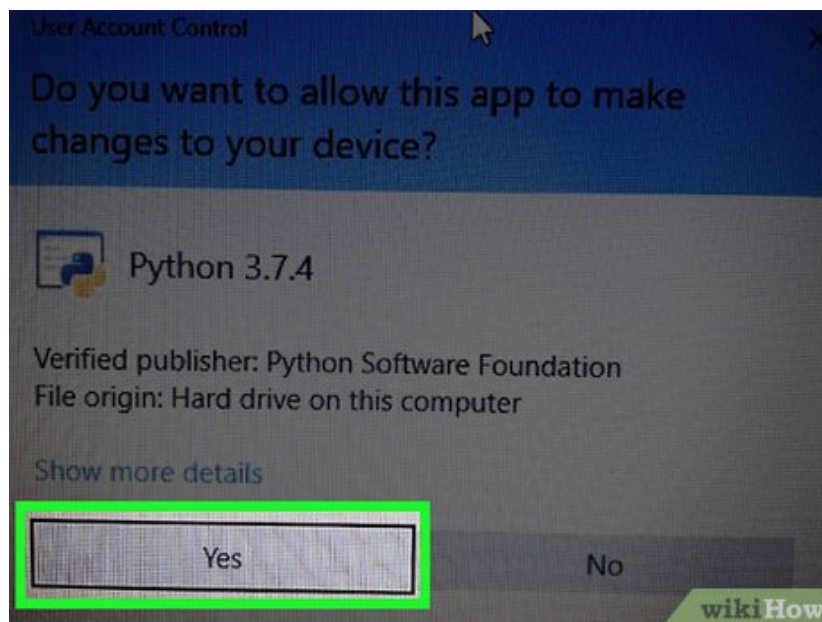
Click **Yes** to confirm. This installs Python on your PC. Once the installation is complete, you'll see a "Setup was successful" window—don't close it just yet.

10.



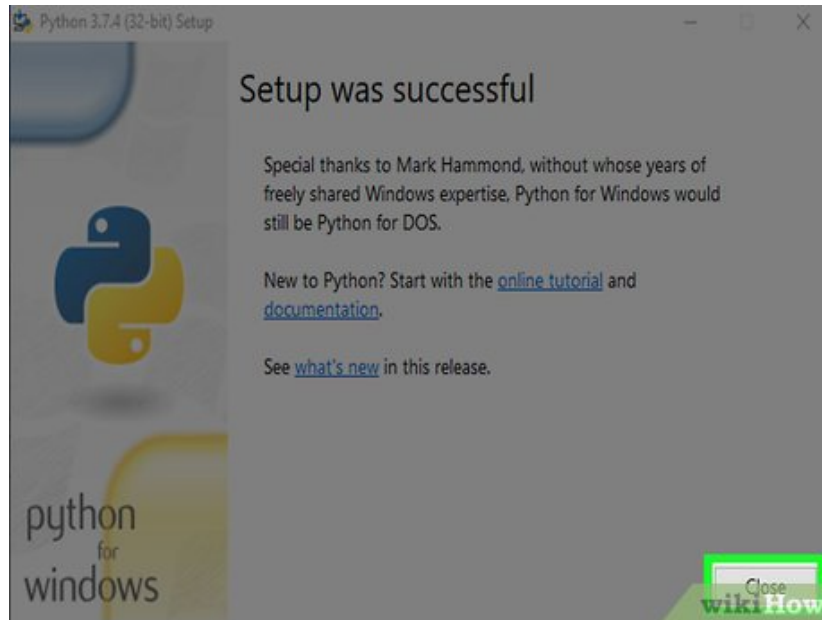
Click **Disable path length limit**. It's toward the bottom of the "Setup was successful" window. This final step ensures that Python (and other apps) to use paths more than 260 characters in length.

11.



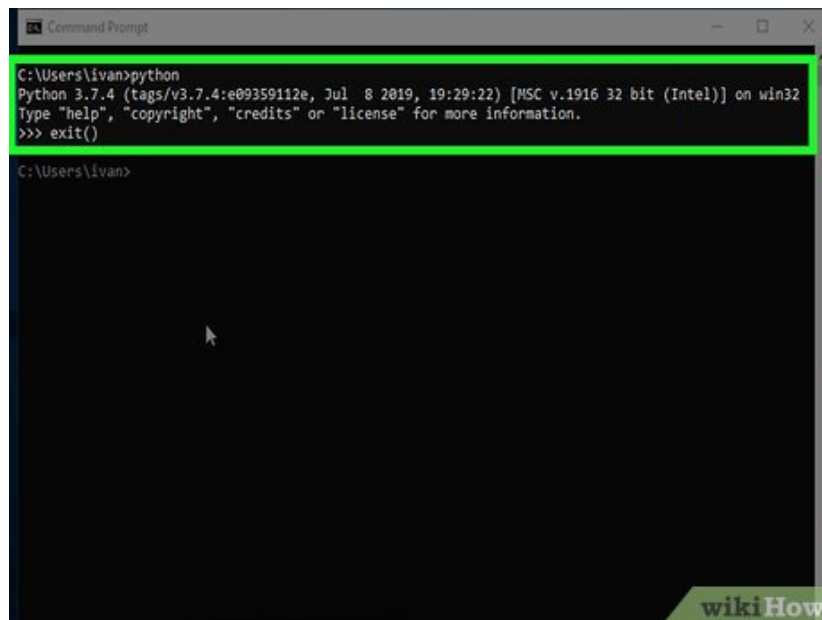
Click **Yes** to confirm. Python is now installed and ready to use.

12.



Click to exit the installer.

13.

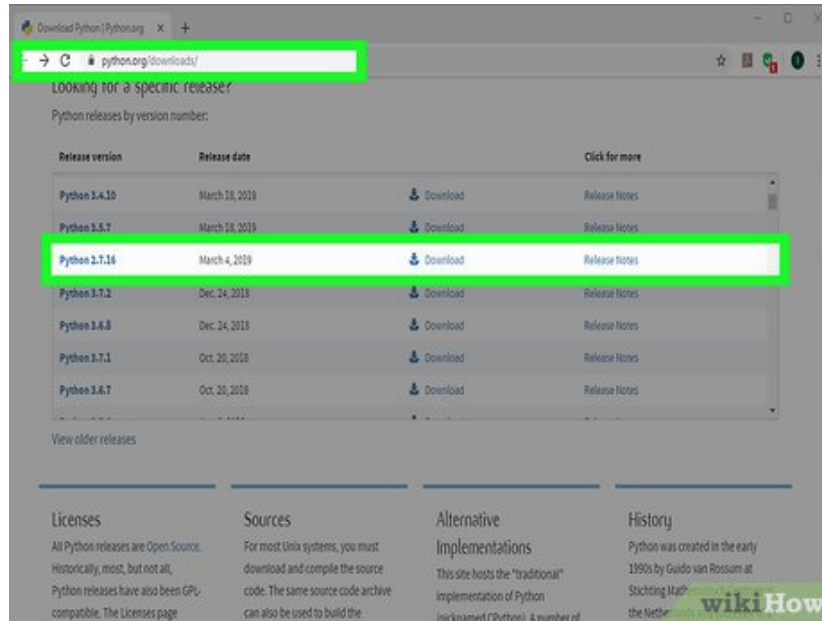


Test your Python installation. Here's how to make sure the path is set up properly:

1. Type `cmd` into the Windows search bar and press `Enter`.
2. Type `python` and press `Enter`. You should see `>>>` at the beginning of the current line. This means Python is working and the path is set correctly.
3. If you see an error that says "python is not recognized as an internal or external command," see the "Adding the Python Path to Windows" method.
4. Type `exit()` to return to the command prompt.

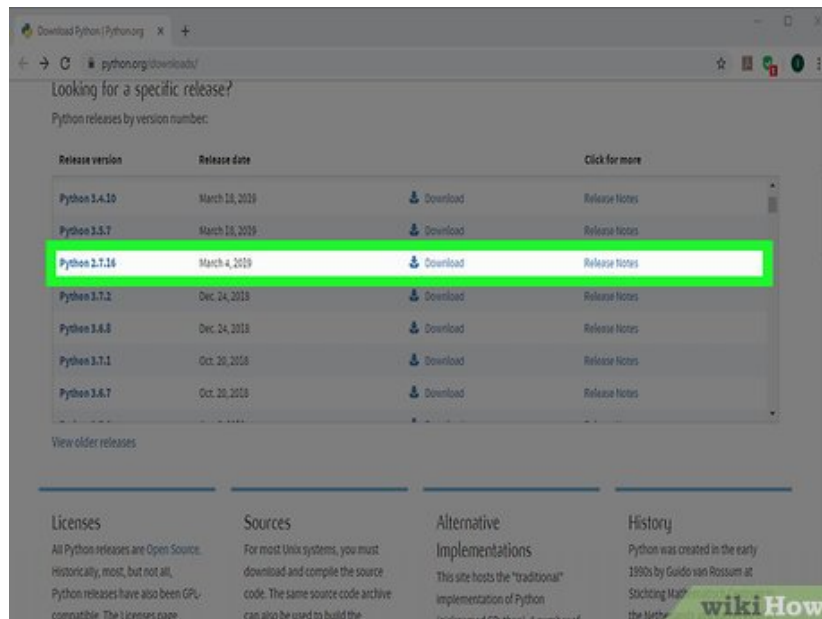
Method 2 of 3:

Installing Python 2



1.

Go to <https://www.python.org/downloads> in a web browser. Use this method if you want to write code in Python 2 instead of (or in addition to) Python 3 in Windows.

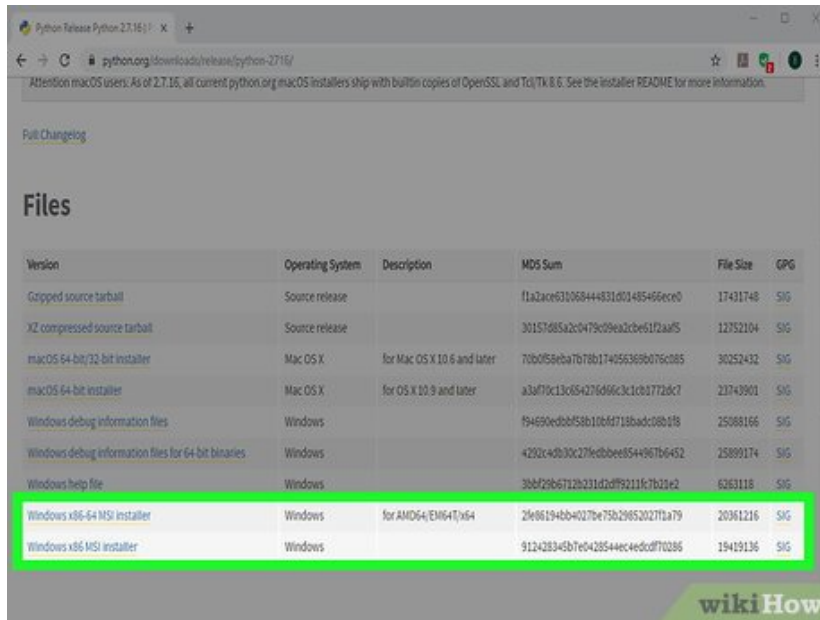


2.

Scroll down and click a Python 2 version. The versions appear under the "Looking for a specific release?" header.

1. If you don't know which version of Python 2 to install, just click the first version beginning with "2." In the list. This ensures you're using the most recently-updated version.

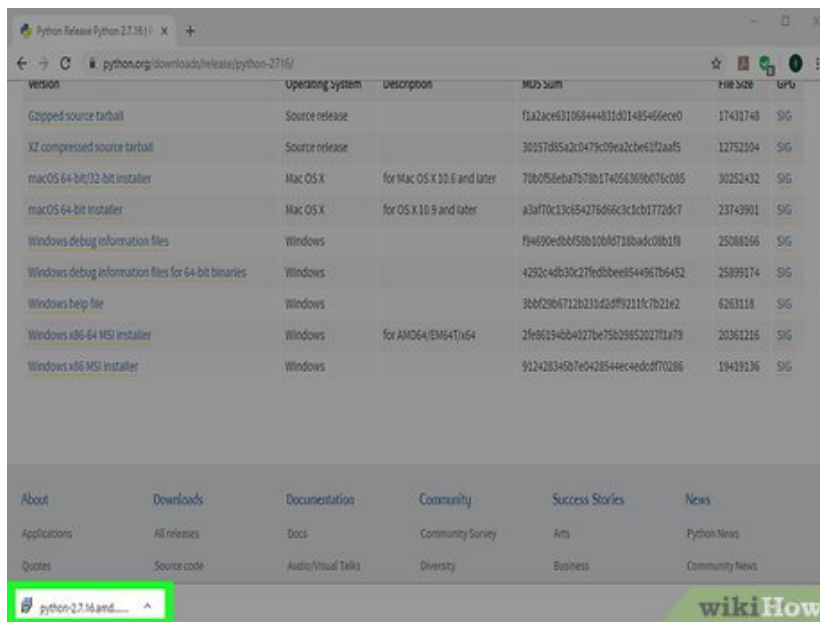
3.



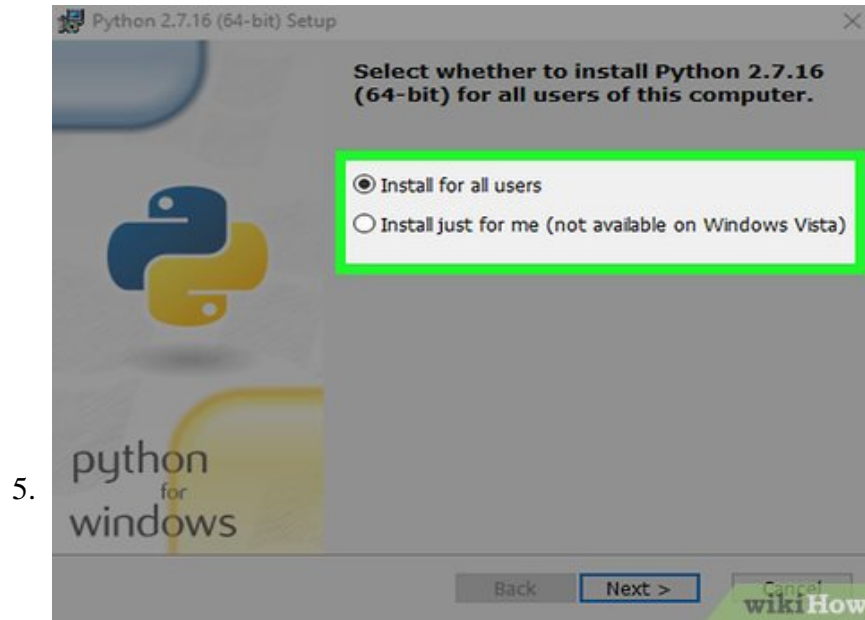
Scroll down and select an installer. This downloads the installer to your computer, though you may have to click to start the download.

1. If you have a 64-bit computer, select .
2. If you're using a 32-bit computer, select .

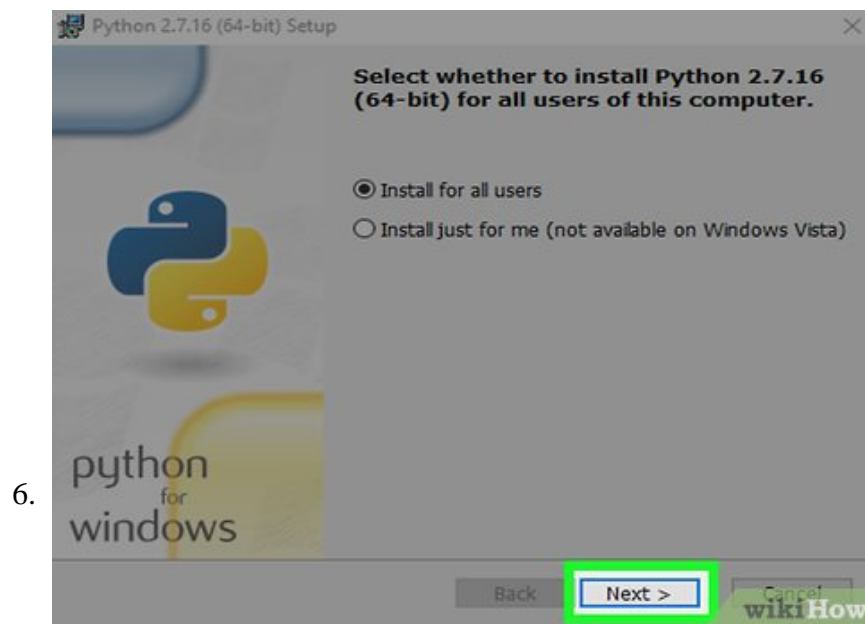
4.



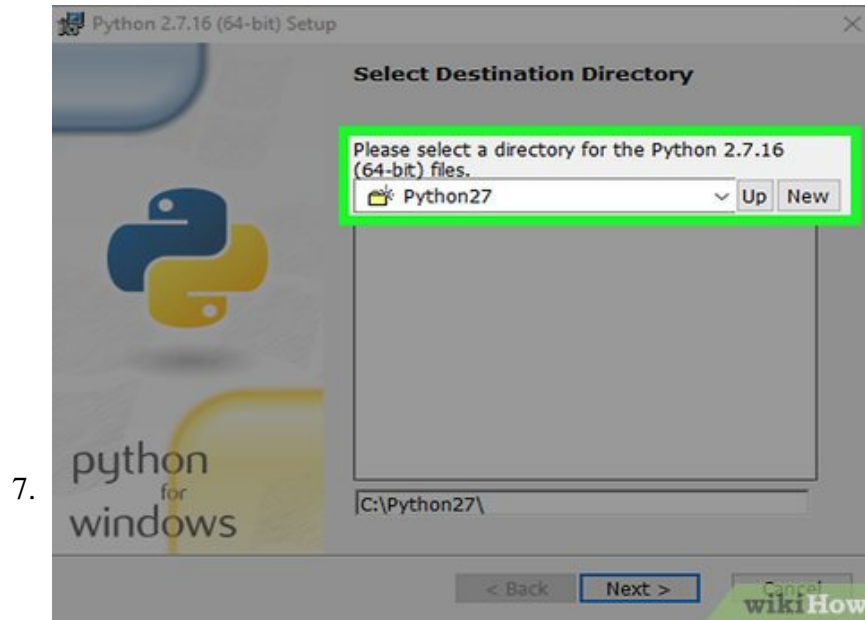
Run the Python installer. You can do this by double-clicking **python-(version).msi** in your Downloads folder.



Select an option for installing. If you want other users of this PC to be able to use Python, select **Install for all users** . If not, select **Install just for me** .



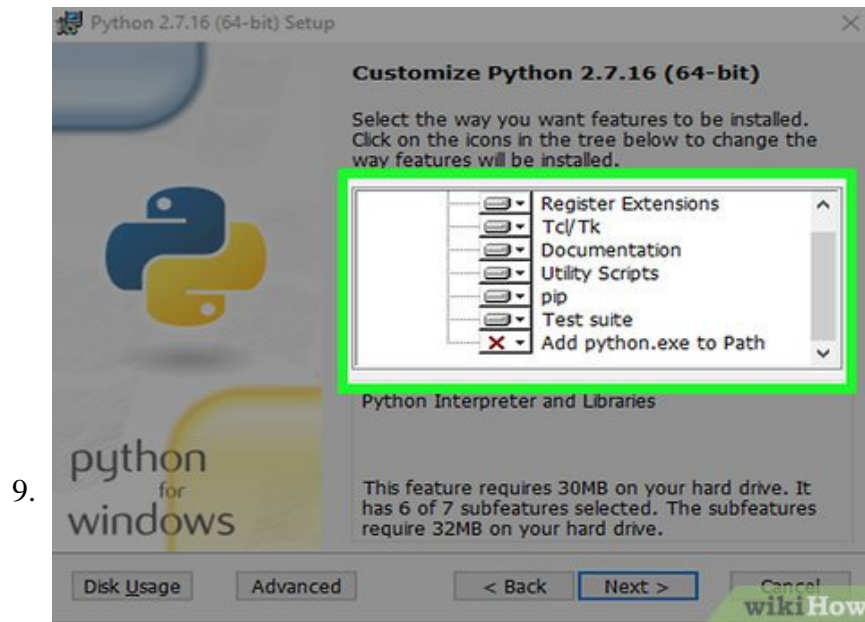
Click . It's at the bottom-right corner.



Select an install directory (optional). The default directory is fine for most people, but you can change it if you wish by selecting a different folder from the menu.



Click **Next**.

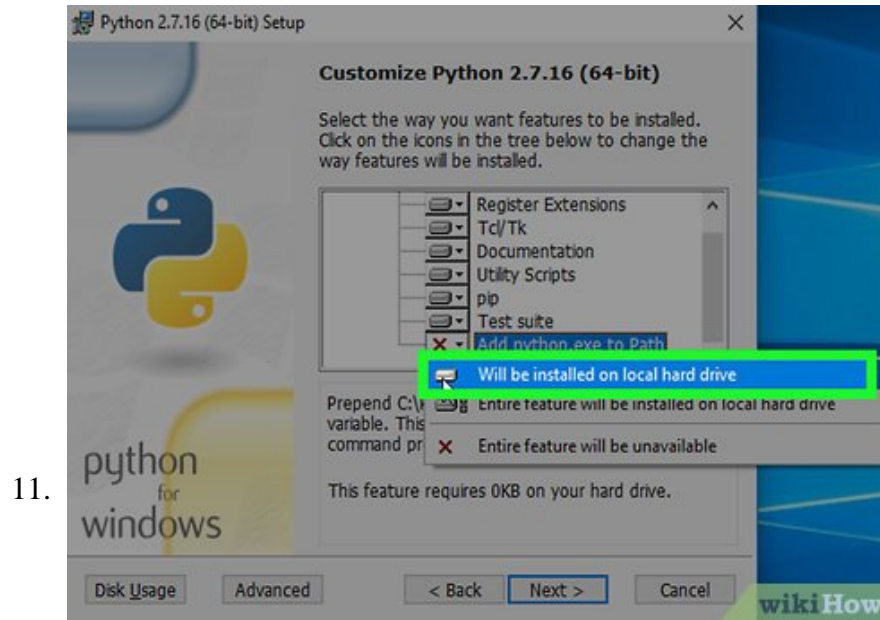


Scroll down to the bottom of the "Customize Python" features list. You should see an option called "Add python.exe to Path." It probably has an "X" on its corresponding button.

1. If you don't see this option, see this method after installing Python.



Click the X button next to "Add python.exe to Path." A menu will expand.



Click **Will be installed on local hard drive**. This ensures that you can run Python commands from anywhere without having to type the full path to Python.



Click **Next**. A security pop-up will appear on most systems at this point.

13.



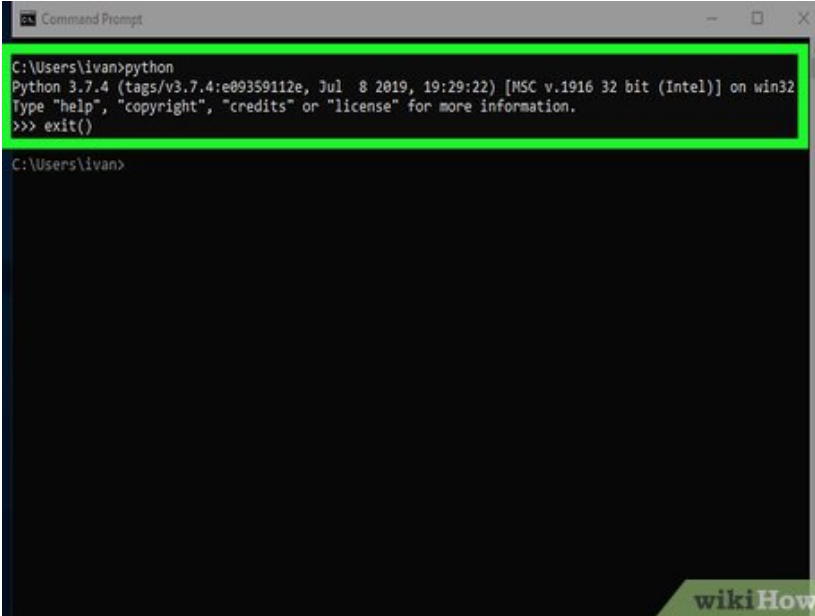
Click **Yes** to continue. This installs Python 2 on the PC. In a few moments, you'll see a window that says "Complete the Python Installer."

14.



Click **Finish** on the installer. Python is now installed.

15.



```
C:\Users\ivan>python
Python 3.7.4 (tags/v3.7.4:e09359112e, Jul 8 2019, 19:29:22) [MSC v.1916 32 bit (Intel)] on win32
Type "help", "copyright", "credits" or "license()" for more information.
>>> exit()

C:\Users\ivan>
```

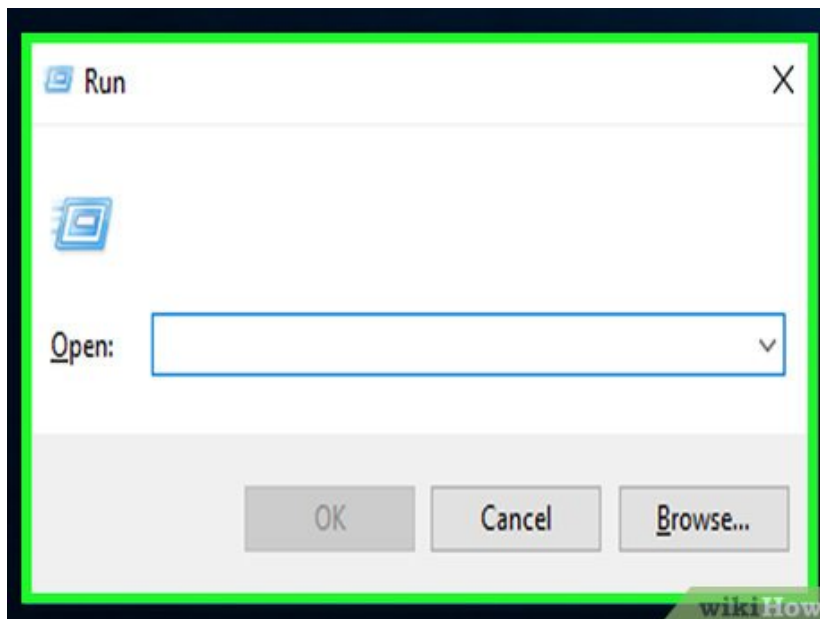
Test your Python installation. Here's how to make sure the path is set up properly:

1. Type `cmd` into the Windows search bar and press `Enter`.
2. Type `python` and press `Enter`. You should see `>>>` at the beginning of the current line. This means Python is working and the path is set correctly.
3. If you see an error that says "python is not recognized as an internal or external command," see the "Adding the Python Path to Windows" method.
4. Type `exit()` to return to the command prompt.

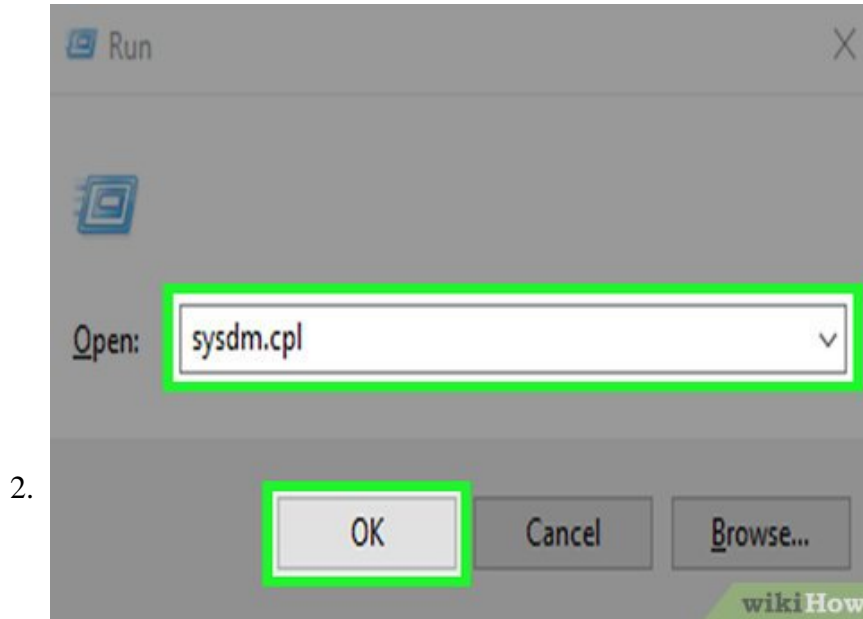
Method 3 of 3:

Adding the Python Path to Windows

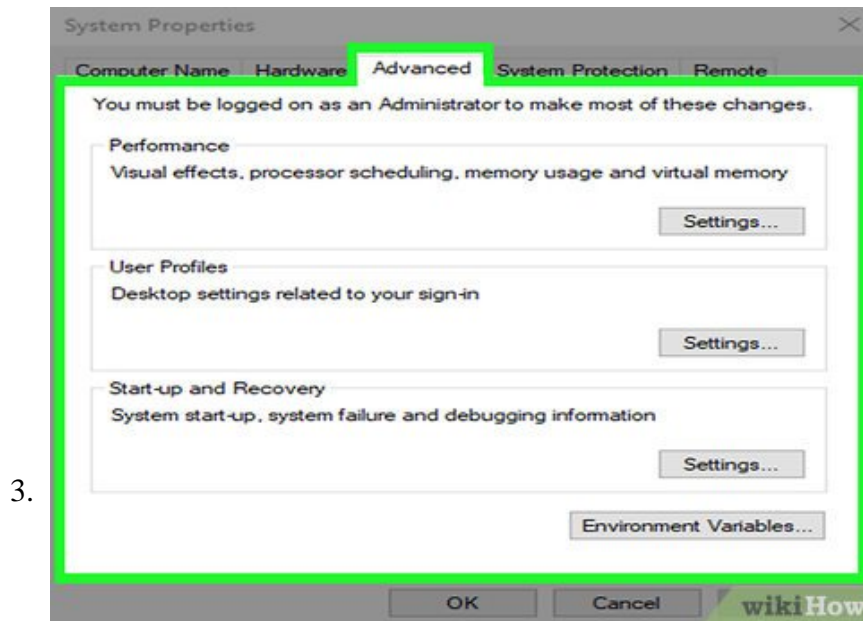
1.



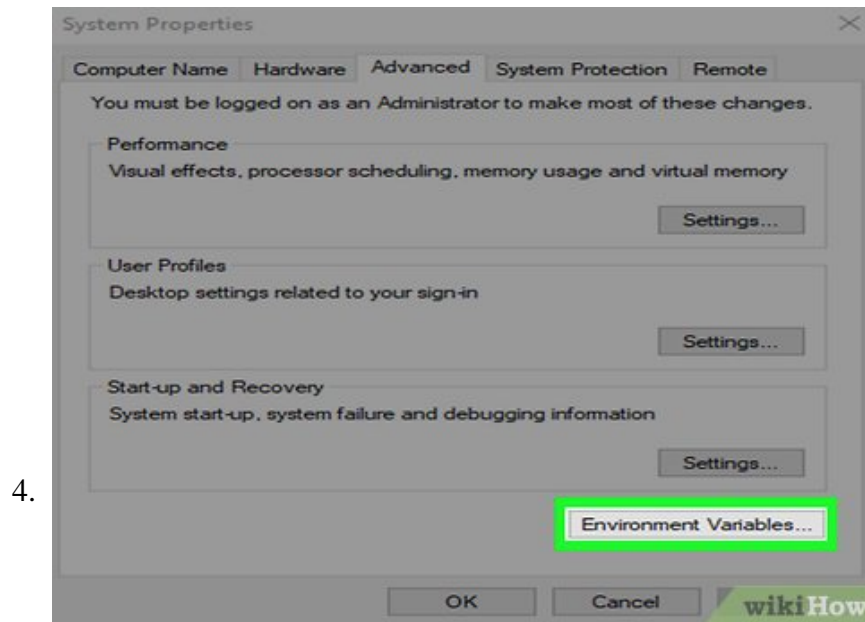
Press **Win + R** to open the **Run** dialog. Use this method if you're installing an older version or see the "python is not recognized as an internal or external command" error when trying to use Python.



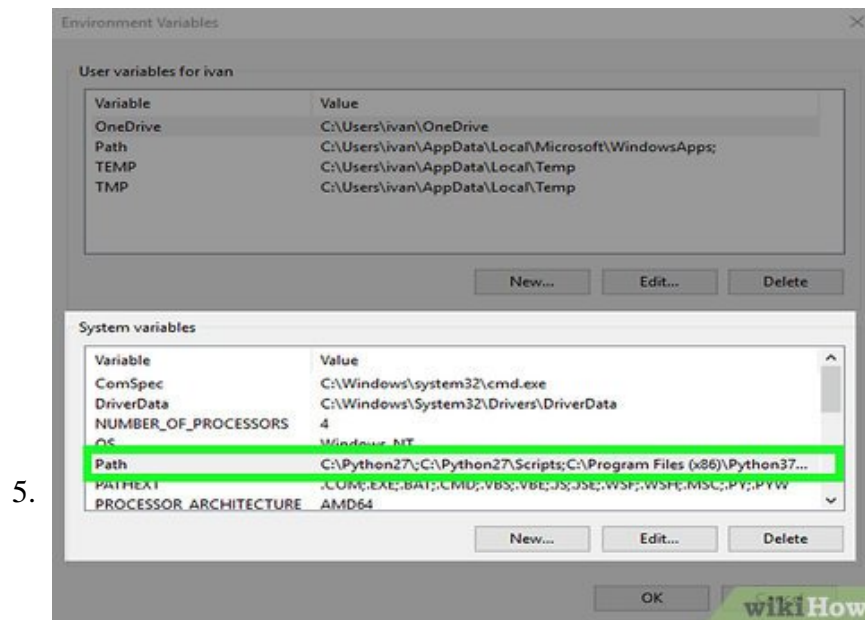
Type `sysdm.cpl` and click **OK**. This opens the System Properties dialog.



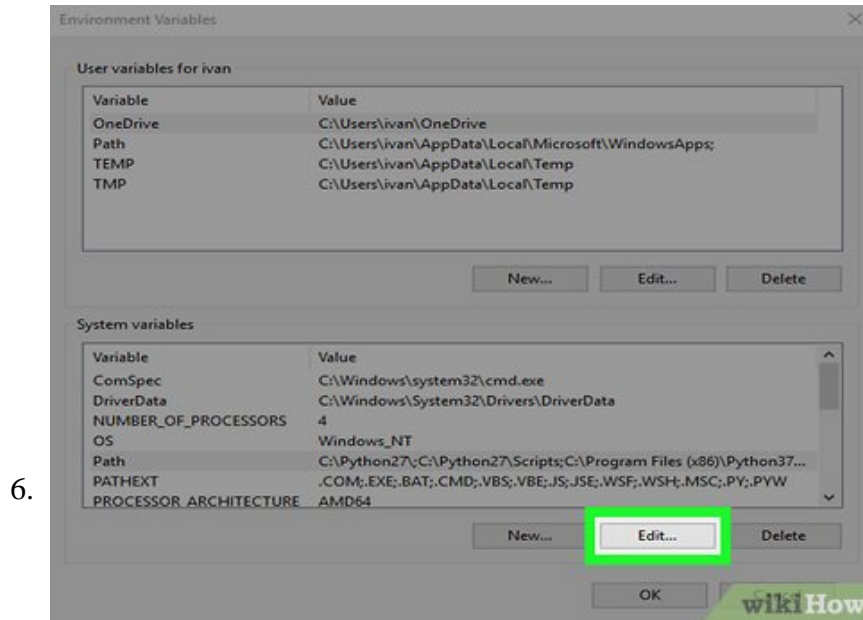
Click the **Advanced** tab. It's at the top of the window.



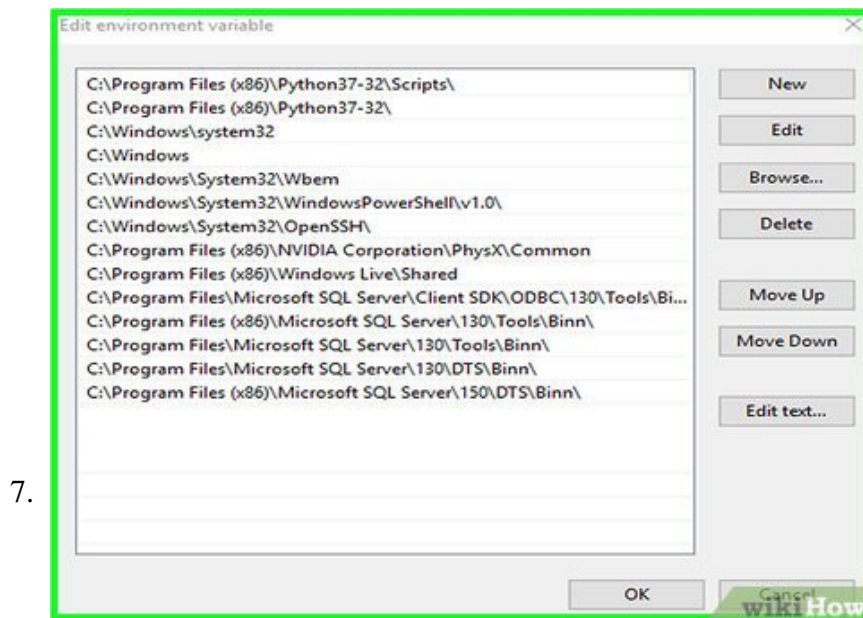
Click **Environment Variables**. It's near the bottom of the window.



Select the **Path** variable under "System variables." This is in second group of variables (not the "User variables" group on top).

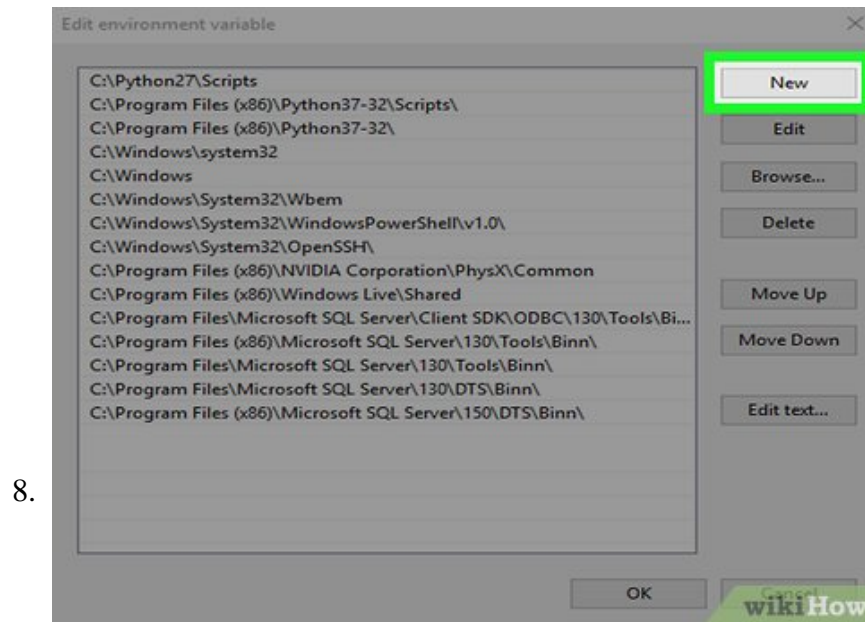


Click **Edit**. It's at the bottom of the window.

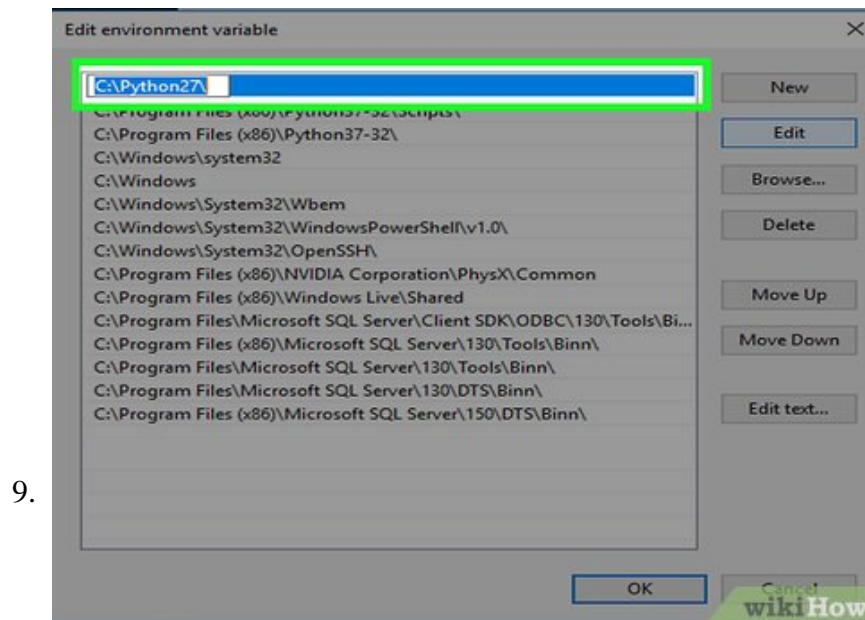


Edit the variables on Windows Vista and earlier. If you're using Windows 10, 8, or 7, skip to the next step. If you're using XP or Vista:

1. Click inside the "Variable value" box to deselect the selected text.
2. Scroll all the way to the end of the text that's already in the "Variable value" box.
3. Type a semicolon ; at the end of the text (no spaces).
4. Type the full path to Python (e.g., C:\Python27) right after the semicolon.
5. Type a semicolon ; at the end of what you just typed (no spaces).
6. Type the full path again, but add Scripts to the end. Example:
 C:\Python27Scripts;C:\Python27Scripts .
7. Click **OK** until you've closed all windows, and then restart your PC. No need to continue with this method.^[2]



Click **New**. It's the first button near the top-right corner of the window.



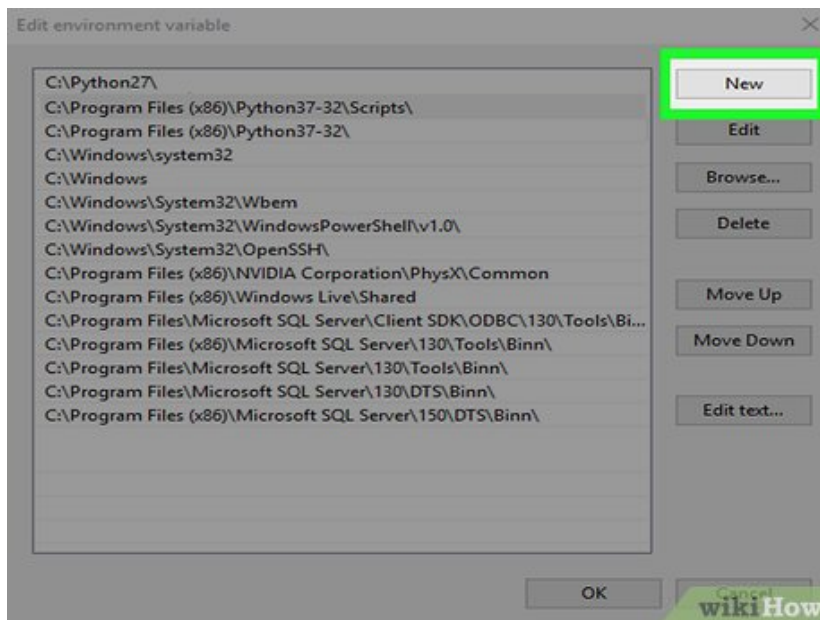
Enter the full path to Python. For example, if Python installed to `C : Python27`, type that into the field.

10.



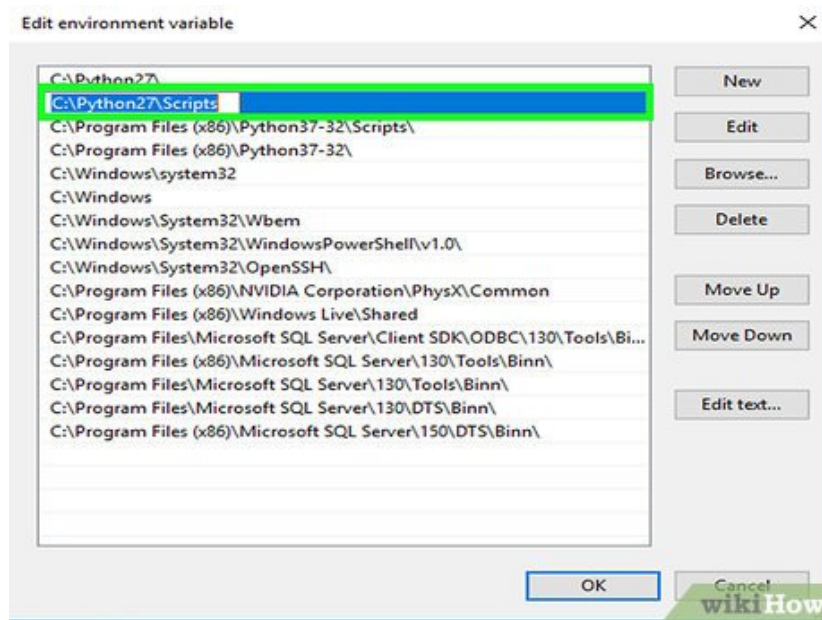
Press **Enter**. Now you'll have to enter just one more path.

11.



Click **New** again.

12.



Enter the full path to the Python "Scripts" directory. This is the same path as you typed before, except you'll be adding `Scripts` to the end.

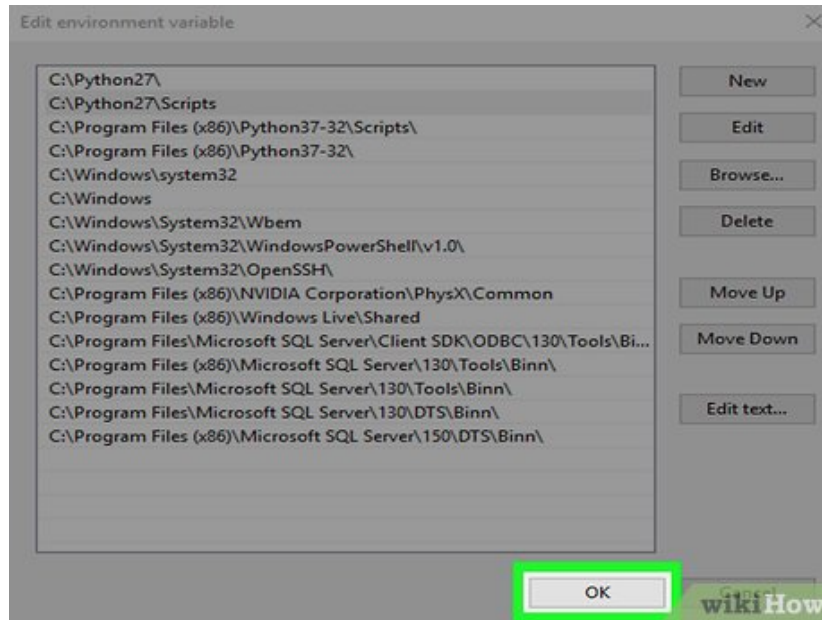
1. For example, `C:\Python27Scripts`.

13.



Press `? Enter`. Your new variables are saved.

14.



Click **OK** and then **OK** again. You should now be able to run Python from the command line just by typing `python`.

You finished reading the article "**How to Install Python on Windows**" edited by the [TipsMake](#) team. We hope this article has provided you with many useful tech tips and tricks. You can search for similar articles on tips and guides. Thank you for reading and for following us regularly.