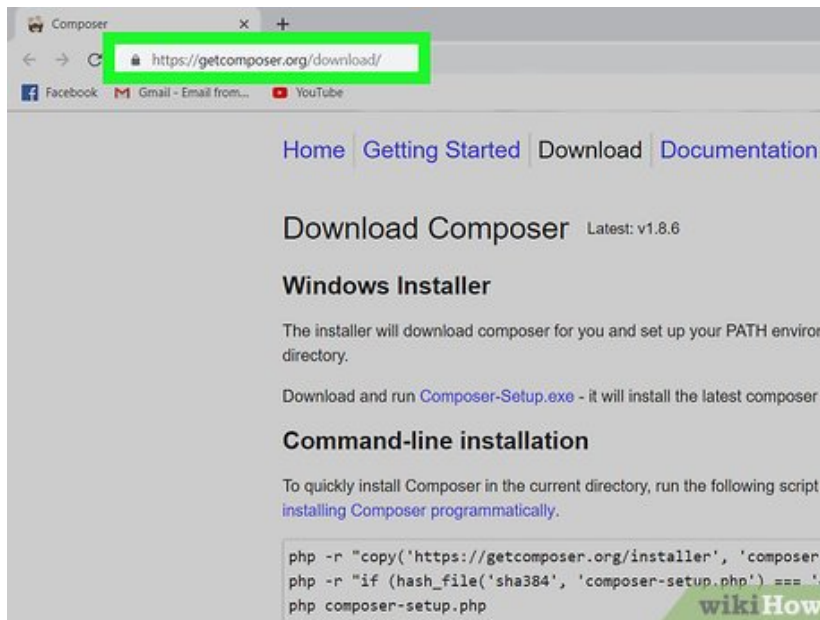


# How to Install PHPMailer

Need to send emails from your PHP application? The default mailing system in PHP (mail()) doesn't offer the customization features of PHPMailer, which is the most popular mail extension for PHP. This wikiHow will show you how to install...

Method 1 of 2:

## Using Composer (Windows)

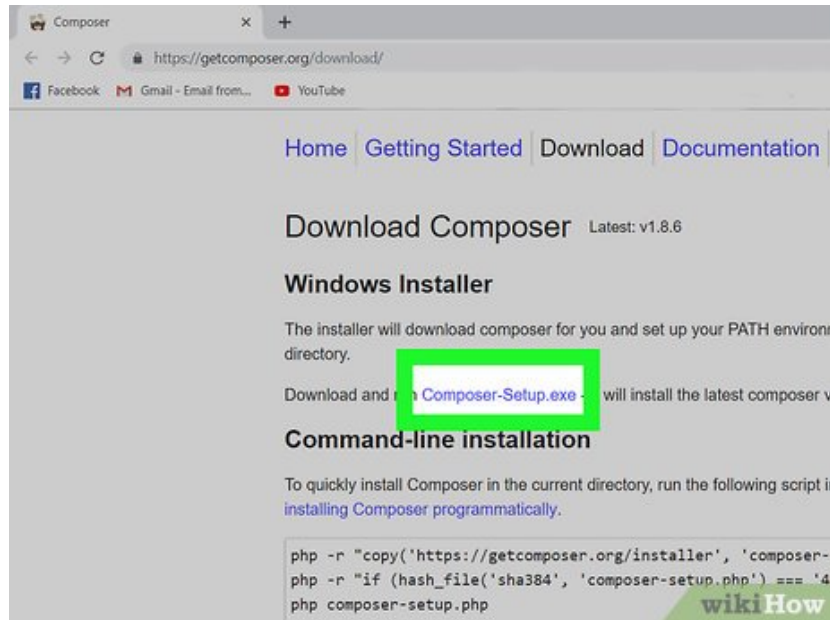


1.

**Go to <https://getcomposer.org/download/>.** Composer is a dependency manager for PHP, which means it manages everything your PHP code needs, including libraries and extensions. This is also the easiest method of installing and managing PHPMailer. You'll need to have XAMPP or WAMP installed to use the PHPMailer in a coding environment.

1. You'll find the link to download under the 'Windows Installer' header.

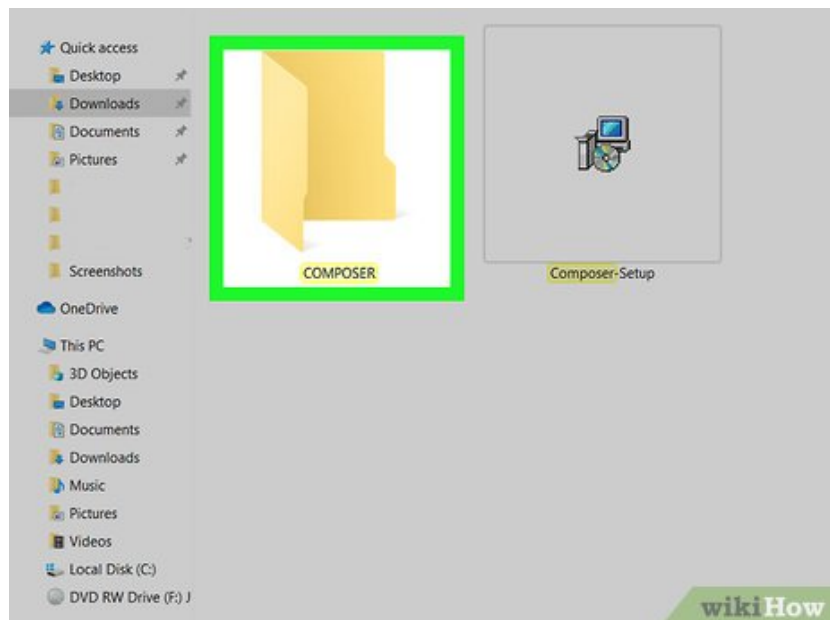
2.



**Click the downloaded file to start the installation process.** Follow the instructions on-screen to install Composer.

1. Choose a PHP executable when prompted to 'choose the command-line PHP you want to use.' All executables will end in .exe.

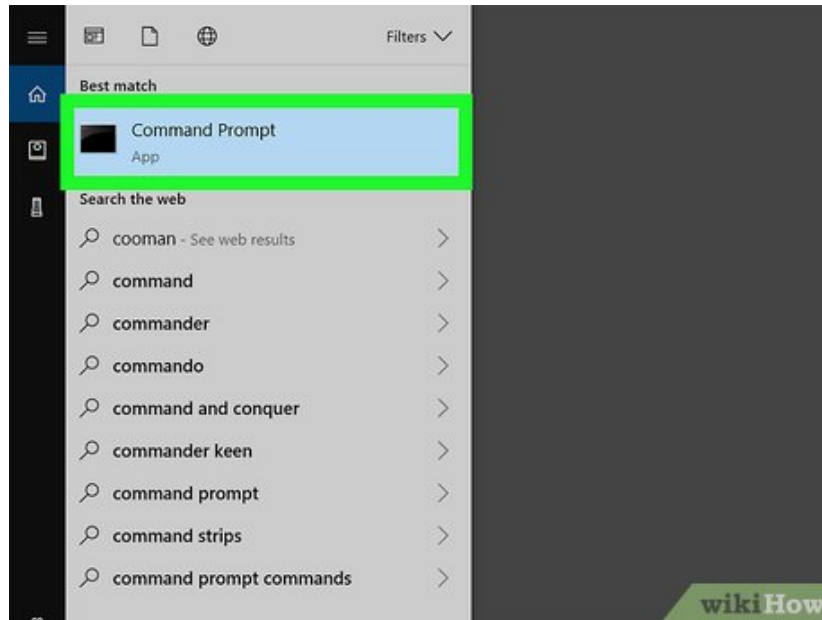
3.



**Create a new 'Composer' folder.** You'll want to navigate in file browser to the location you will eventually install Composer.

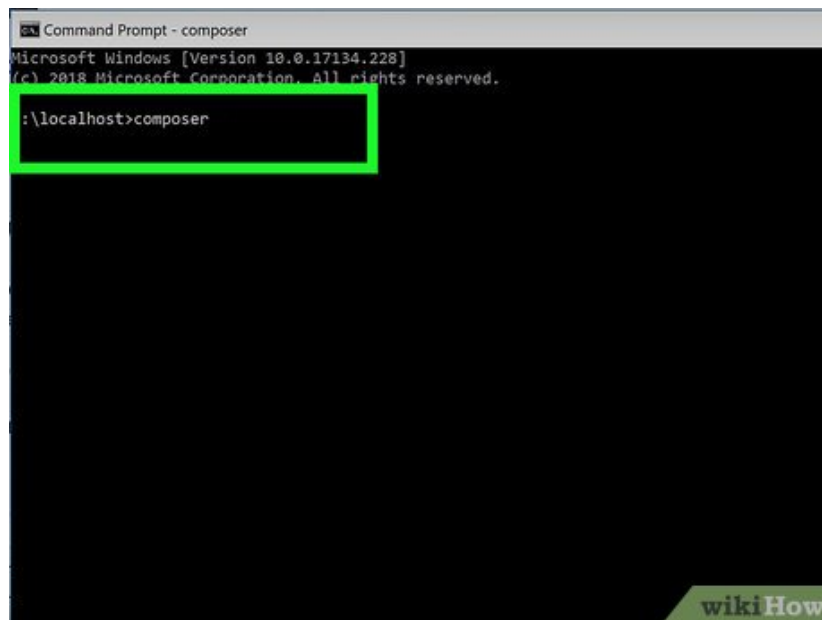
1. Navigate to and double-click the Xampp partition in your file browser, right-click and choose to 'Add a New Folder' and name it 'Composer.'

4.



**Search for and open 'Command Prompt' in your Start Menu.** You can also access the search window by pressing ? `Win` + `S`. A command-line terminal will load.

5.



**Navigate to the directory where you want to install PHPMailer.** For example, type `cd C:/xampp/composer`.

1. The terminal will confirm it's in that folder.

```
Command Prompt - composer require phpmailer/phpmailer
require      Adds required packages to your composer.json and installs them
run-script  Runs the scripts defined in composer.json.
search      Searches for packages.
self-update  Updates composer.phar to the latest version.
selfupdate  Updates composer.phar to the latest version.
show        Shows information about packages.
status      Shows a list of locally modified packages, for packages installed
suggests    Shows package suggestions.
u           Upgrades your dependencies to the latest version according to
composer.lock file.
update      Upgrades your dependencies to the latest version according to
composer.lock file.
upgrade     Upgrades your dependencies to the latest version according to
composer.lock file.
validate    Validates a composer.json and composer.lock.
why         Shows which packages cause the given package to be installed.
why-not     Shows which packages prevent the given package from being installed.

C:\localhost>cd php
C:\localhost\php>cd mail_app
6. C:\localhost\php\mail_app>composer require phpmailer/phpmailer
```

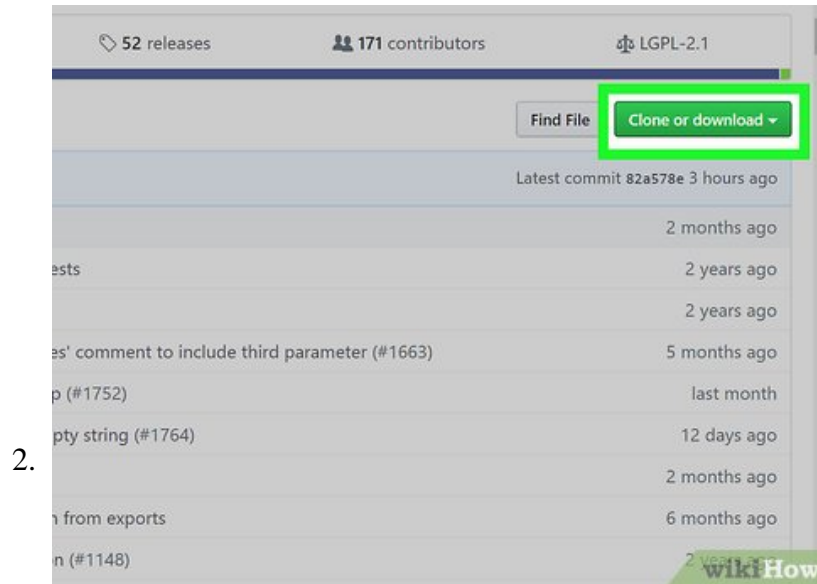
Type " **composer require phpmailer/phpmailer** " and press **Enter**. Terminal will display a wall of text as it installs Composer.

```
index.php
Source History
1 <?php
2 use PHPMailer\PHPMailer\PHPMailer;
3 use PHPMailer\PHPMailer\Exception;
4
5 //Load Composer's autoloader
6 require 'vendor/autoload.php';
7
8 $mail = new PHPMailer(true);
9
10
11
```

**Composer is installed with an 'autoload.php' file you can use.**

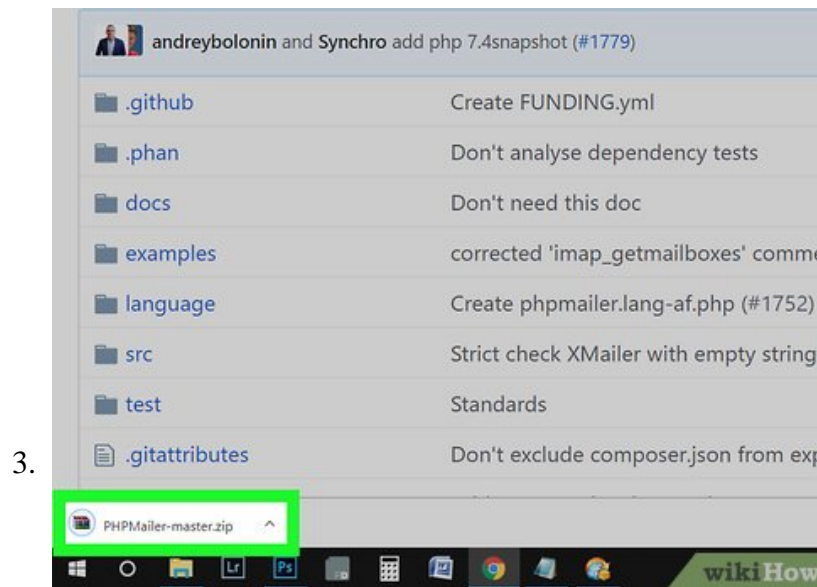
1. For example, you can type the following code in your PHP to include PHPMailer:

**Go to <https://github.com/PHPMailer/PHPMailer>.** Here you can download the PHPMailer source files directly.



2.

Click **Clone or download** on the right side of the page. You won't need XAMPP, WAMP, or any other PHP environment.



3.

**Unzip the installed file where you want to install PHPMailer.** When you double-click the installed file, you are prompted for the unzipped files location.

```
4. <?php
//Import PHPMailer classes into the global namespace
use PHPMailer\PHPMailer\PHPMailer;
use PHPMailer\PHPMailer\Exception;

require 'vendor/autoload.php';

$mail = new PHPMailer(true);
try {
    //Server settings
    $mail->isSMTP(); // Enable verbose debug output
    $mail->Host = 'smtp1.example.com;smtp2.example.com'; // Set mailer to use SMTP
    $mail->SMTPAuth = true; // Specify main and backup SMTP servers
    $mail->Username = 'user@example.com'; // Enable SMTP authentication
    $mail->Password = 'secret'; // SMTP username
    $mail->SMTPSecure = 'tls'; // SMTP password
    $mail->Port = 587; // Enable TLS encryption, 'ssl' also accepted
    // TCP port to connect to

    //Recipients
    $mail->setFrom('from@example.com', 'Mailer');
    $mail->addAddress('joe@example.net', 'Joe User'); // Add a recipient
    $mail->addAddress('ellen@example.com'); // Name is optional
    $mail->addReplyTo('info@example.com', 'Information');
    $mail->addCC('cc@example.com');
    $mail->addBCC('bcc@example.com');

    //Attachments
    $mail->addAttachment('/var/tmp/file.tar.gz'); // Add attachments
    $mail->addAttachment('/tmp/image.jpg', 'new.jpg'); // Optional name

    //Content
    $mail->isHTML(true); // Set email format to HTML
    $mail->Subject = 'Here is the subject';
}
```

**Add the following code into your PHP to include PHPMailer:**

```
php use PHPMailer\PHPMailer\PHPMailer; use
PHPMailer\PHPMailer\Exception; /* Exception class. */ require
'C:\PHPMailer\src\Exception.php'; /* The main PHPMailer class. */
require 'C:\PHPMailer\src\PHPMailer.php';
/* SMTP class, needed if you want to use SMTP. */ require
'C:\PHPMailer\src\SMTP.php'; $email = new PHPMailer(TRUE);
```

1. PHPMailer is installed and ready to go on your PHP script.

You finished reading the article "**How to Install PHPMailer**" edited by the [TipsMake](#) team. We hope this article has provided you with many useful tech tips and tricks. You can search for similar articles on tips and guides. Thank you for reading and for following us regularly.