

# How to install Photoshop CS6 without errors on Windows

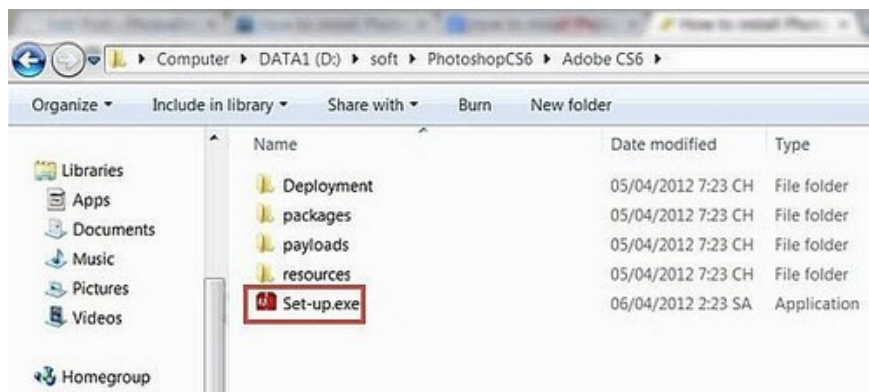
Are you trying to install Photoshop CS6 but encountering errors? Adobe has stopped supporting it, making installation more difficult. This guide will help you download and install Photoshop CS6 safely, avoiding activation errors and ensuring stable operation on your Windows computer.

Installing Photoshop CS6 isn't as simple as it used to be because Adobe has discontinued it. If you encounter installation errors or don't know how to activate it, this guide will help you download and install the software correctly step-by-step.

## *Instructions for downloading and setting up the software.*

*Step 1:* First, you need to **download the standard version of Photoshop CS6** [here](#).

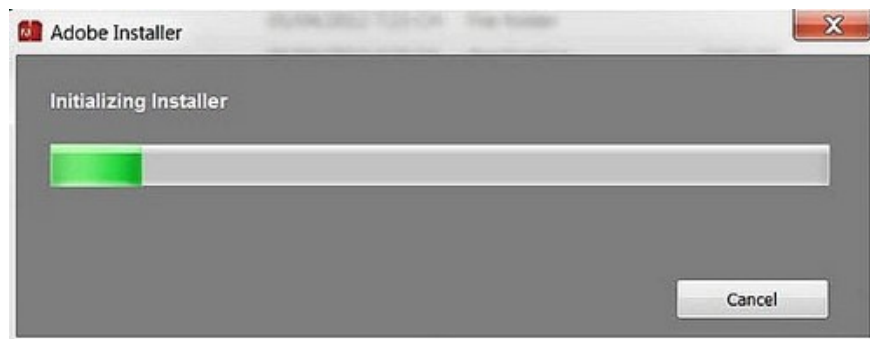
*Step 2 :* After downloading, proceed to extract the files.



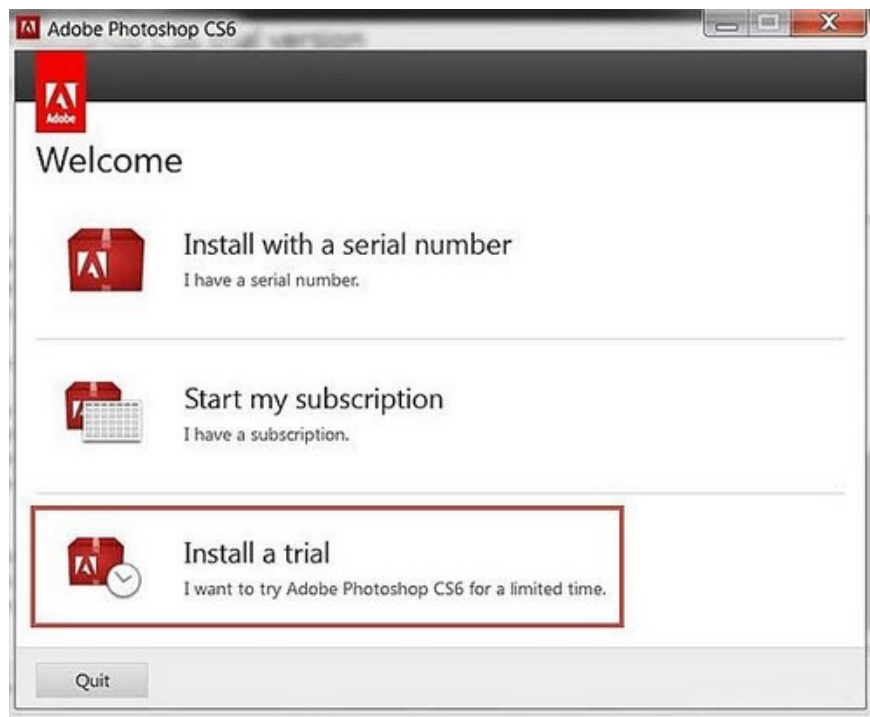
- Run the **Set-up.exe** file as Administrator.



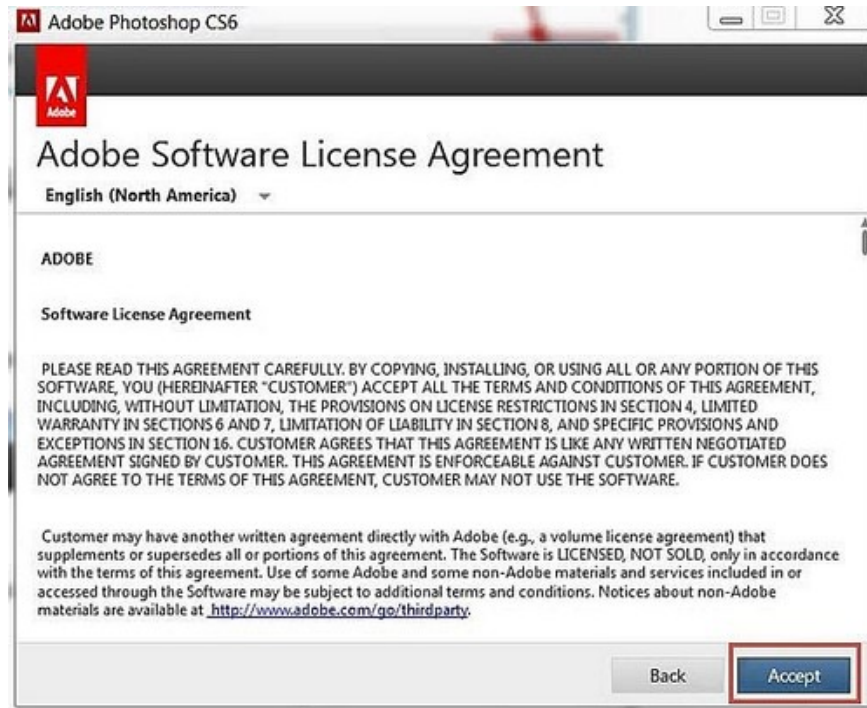
- Please wait a moment while the computer completes the installation.



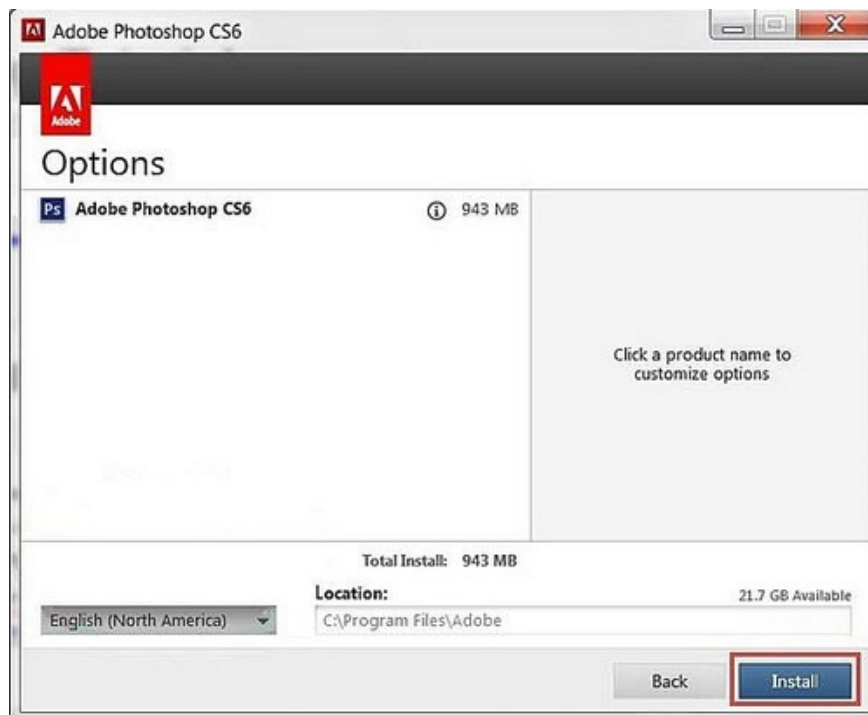
*Step 3* : In the next step, select "**Install a trial**" if you want to install a trial version. If you have a key, choose "**Install with a serial number**" or "**Start my subscription**".



*Step 4* : Here, confirm the terms and conditions provided by Adobe.



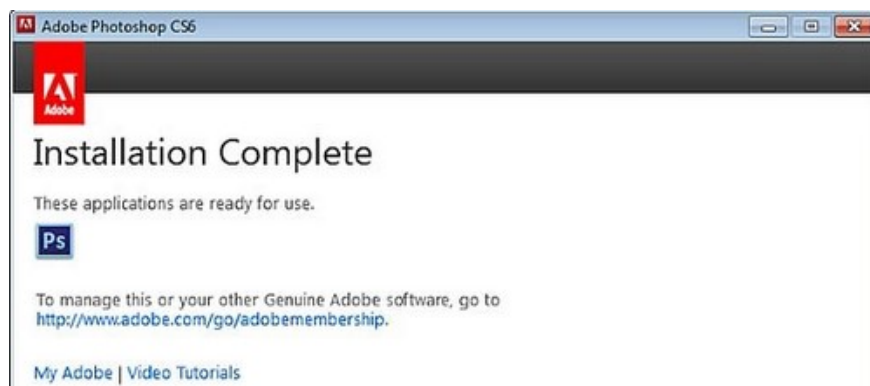
*Step 5* : TipsMake recommends choosing **English** as your primary language. Switching to Vietnamese might make it difficult to understand and find instructions online.



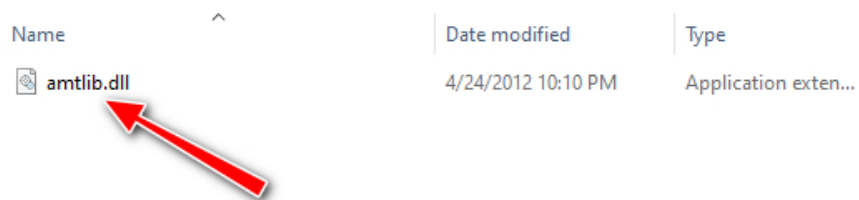
*Step 6*: Photoshop will begin the installation process, which usually takes about 5-7 minutes.



- The installation process is complete.

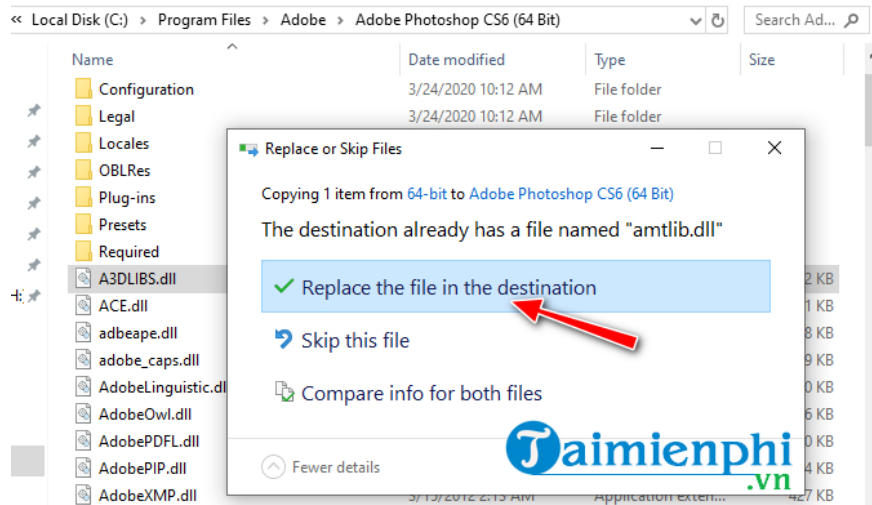


- To use the software without a license key, download the activation file here.
- Depending on whether your operating system is 32-bit or 64-bit, access the folder and copy the **amtlib.dll** file.



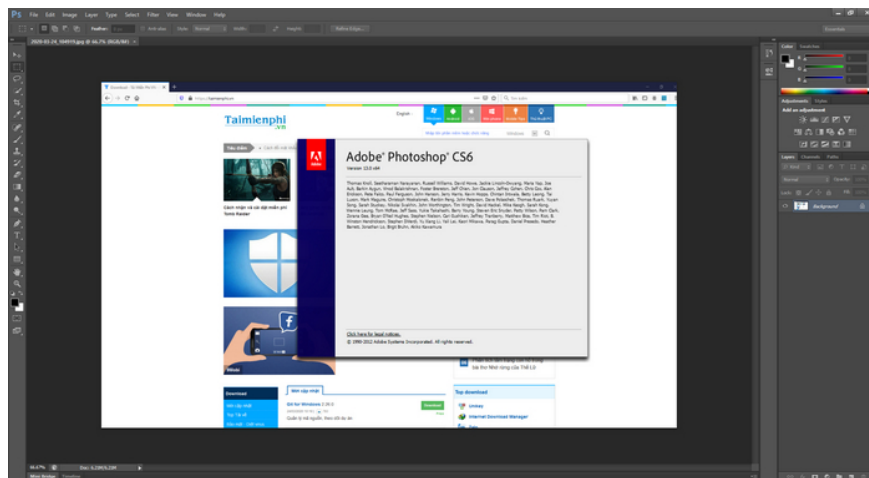
- Next, find the path containing the file:
- For example, if the operating system is 64-bit, **C:\Program Files\Adobe\Adobe Photoshop CS6 (64 Bit)**

- Paste the file into the directory and select "**Replace the file in the destination**"



- So, the installation steps are complete.

+ If the software requires a code, you can get a free **Photoshop CS6 key** here.



Adobe Photoshop CS6 remains a good choice if you want professional photo editing on a mid-range computer. If you encounter errors during installation, please refer to the guide on how to fix Photoshop CS6 crashing or how to activate Photoshop CS6 on Windows 10 for stable use.

You finished reading the article "**How to install Photoshop CS6 without errors on Windows**" edited by the [TipsMake](#) team. We hope this article has provided you with many useful tech tips and tricks. You can search for similar articles on tips and guides. Thank you for reading and for following us regularly.