

How to Install Netbeans on a Linux

NetBeans is an IDE (Integrated Development Environment) application mainly used by developers to create applications using Java and other programming architectures like PHP and C++. NetBeans can be installed and run on three different...

Part 1 of 2:

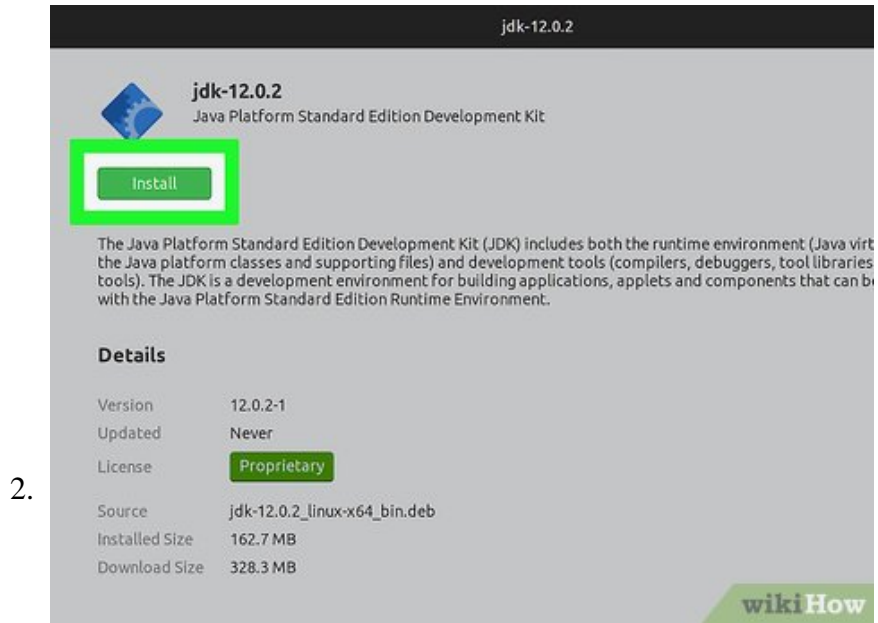
Installing the Java SE Development Kit



1.

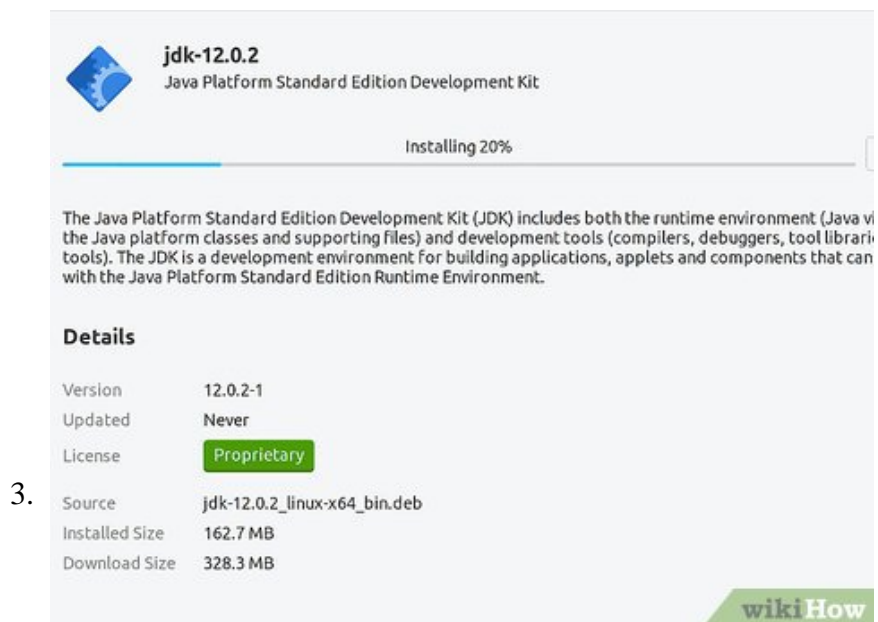
Download the Java installer. NetBeans requires the latest version of the Java development kit (JDK) installed on your computer. You can download the latest JDK from this link:

1. <http://www.oracle.com/technetwork/java/javase/downloads/index.html>.



Install the JDK. Open your Linux computer's command terminal by pressing CTRL + ALT + T keys on your keyboard. Once the command terminal is up, type in the following command: 'rpm -ivh filename.rpm'.

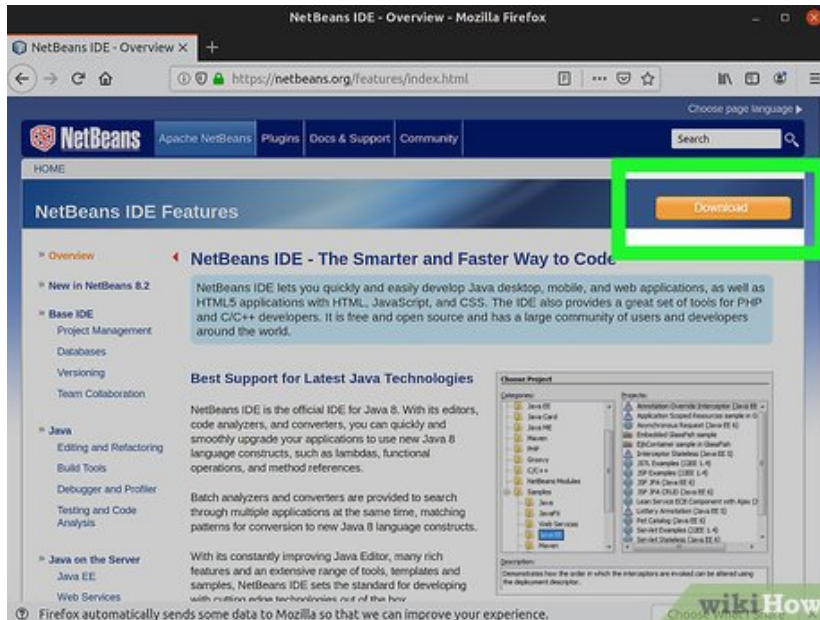
1. The 'Filename' in the command refers to the name of the JDK installer file you downloaded.



Wait for the process to complete. A message on the command terminal will notify you once the JDK has been installed.

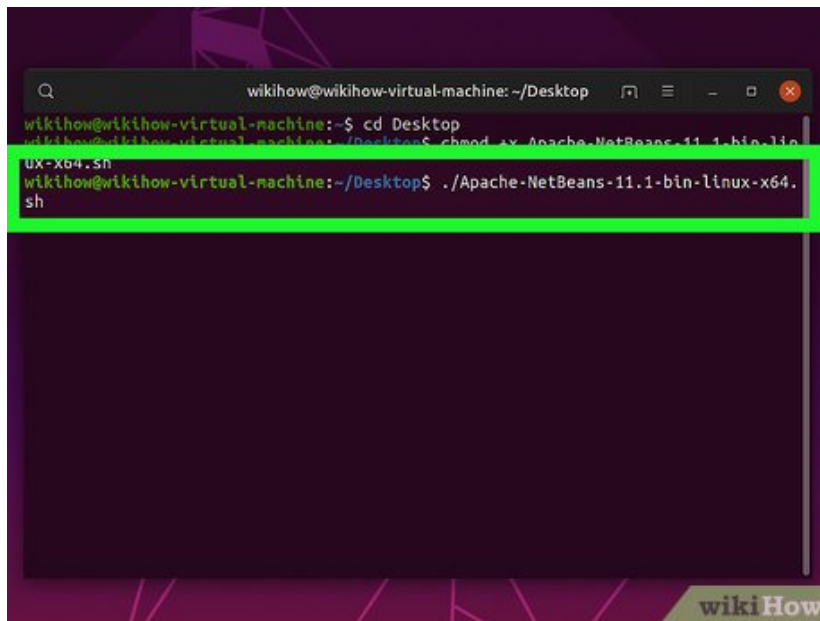
Part 2 of 2:

Installing NetBeans



1.

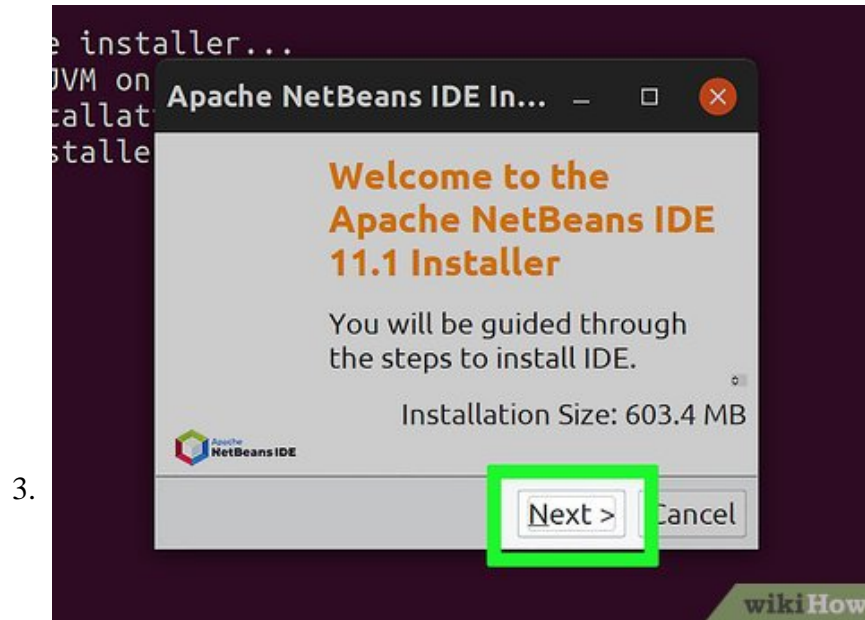
Download NetBeans. Get the latest NetBeans IDE installer from this site: <https://netbeans.org/features/index.html>. Click the 'Download' button and the browser will start downloading the installer file to your computer.



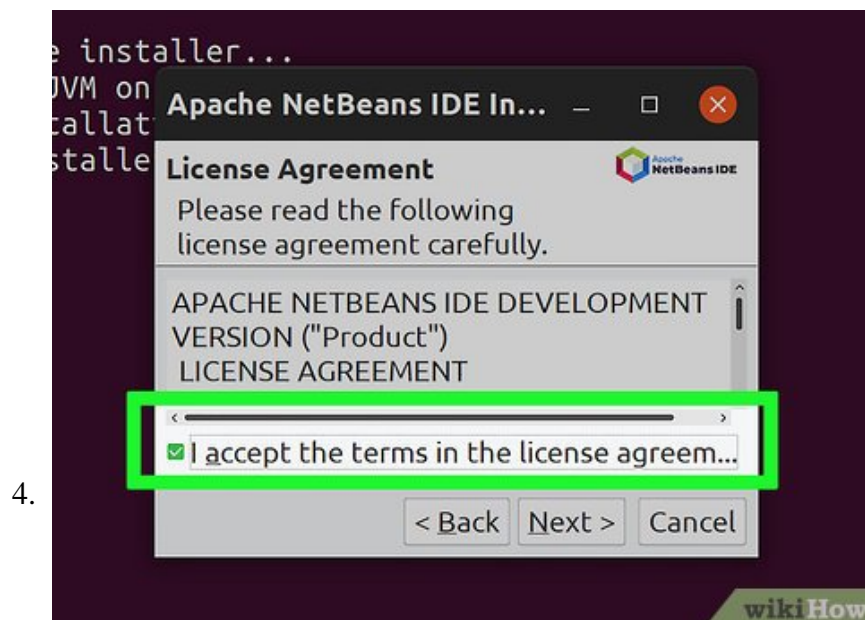
2.

Run the NetBeans installer. Open your Linux computer's command terminal by pressing CTRL + ALT + T keys on your keyboard. Once the command terminal is up, type in the following command: 'chmod +x filename'.

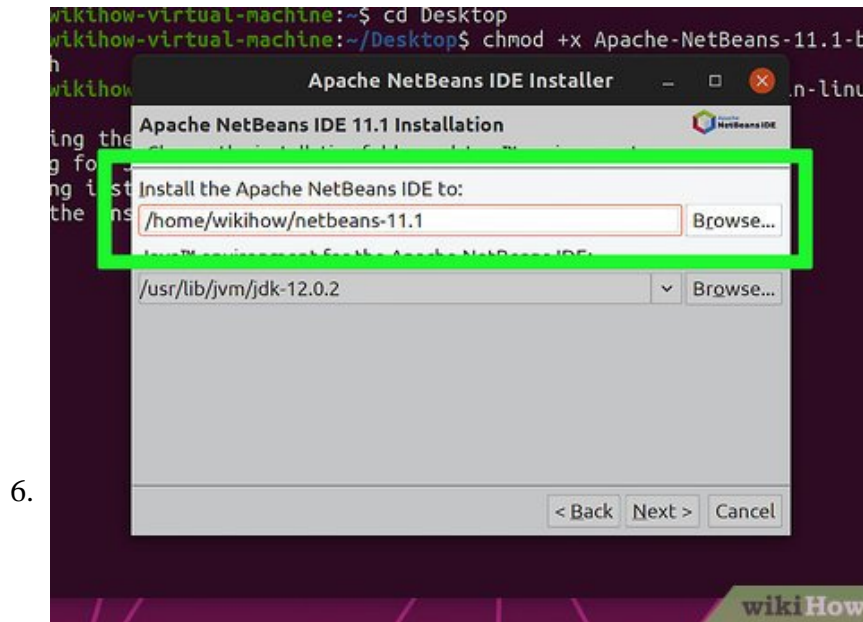
1. The 'filename' in the command refers to the name of the NetBeans installer file you downloaded.
2. The NetBeans setup window will then appear.
3. Note: If the installer doesn't appear, it may work if this is typed instead:
/home/"username"/Downloads/"filename"
4. Insert your profile name instead of "username" and the NetBeans file instead of "filename".



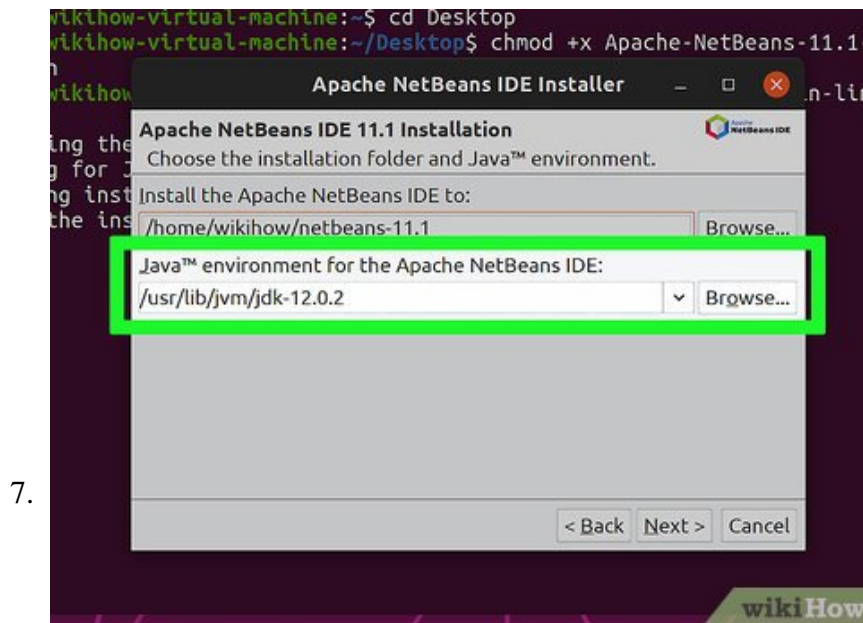
Start the setup. Click 'Next' on the Welcome page of the NetBeans setup to begin.



- Agree to the License Agreement.** The next page will show the licensing agreement for the NetBeans application. Read the agreement, put a checkmark on the Accept section and click 'Next' to proceed.
5. **Install JUnit.** If you'd like to install the JUnit package with NetBeans, agree with the license agreement and click 'Next.' Otherwise, you can simply skip this step and not install the JUnit package.



Choose the installation directory. On the next window you'll be asked where you want to install the NetBeans application. If you wish to set your own, click on 'Browse' and navigate to the directory of your choice. If you'd like to use the default location (recommended), then just click on 'Next' to continue.

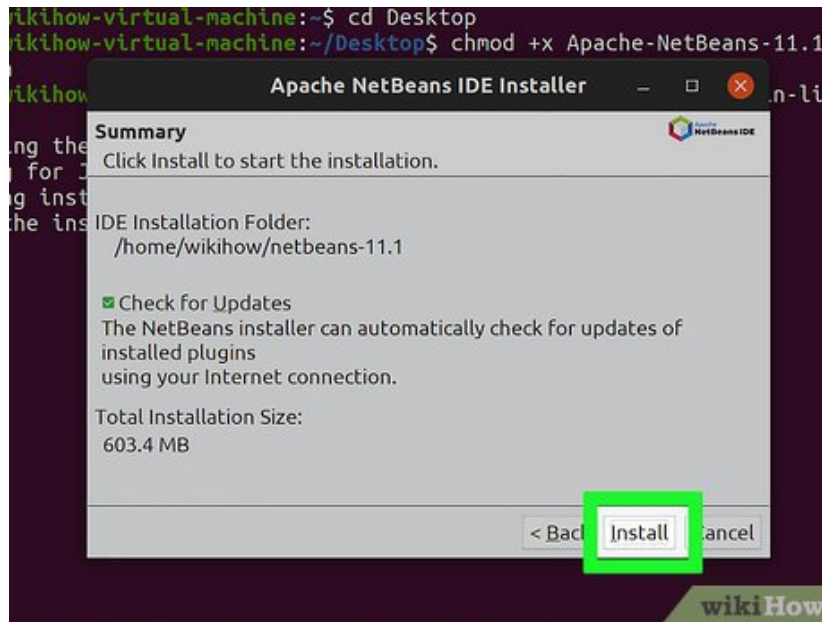


Choose the default JDK to install. Next, you'll be asked which JDK you want to install with NetBeans. If you'd like to install a specific JDK package, click the drop-down list and choose which one from the list you'd like to get. Otherwise, if you want to go with the recommended JDK package to install, just hit 'Next' again to go to the next step.

8. **Install GlassFish Server Open Source Edition.** If this step appears on your setup process, you can choose either to install it on a specific location on your computer by clicking 'Browse' or accepting the default installation directory by clicking 'Next'.
9. **Install Apache Tomcat.** If this step appears on your setup process, you can choose either to install it on a specific location on your computer by clicking 'Browse' or accepting the default installation directory by

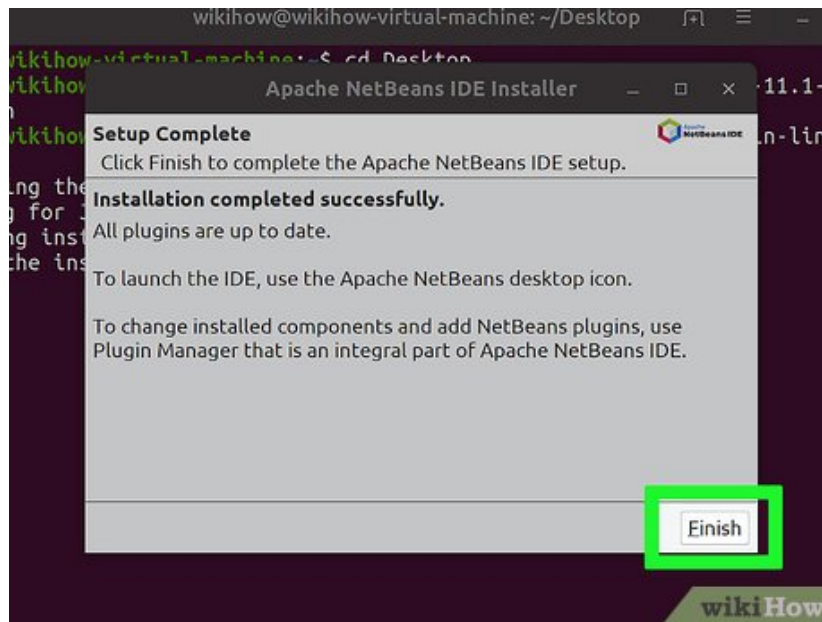
clicking 'Next'.

10.



View the summary. On the Summary page of the setup you'll be able to check that all needed components to be installed are selected and if your computer has enough memory to accommodate the application. Click the 'Install' button to begin once you're done checking the summary page.

11.



Finalize setup. Once the installation process is complete, click the 'Finish' button and you're done installing NetBeans on Linux.

You finished reading the article "**How to Install Netbeans on a Linux**" edited by the [TipsMake](#) team. We hope this article has provided you with many useful tech tips and tricks. You can search for similar articles on tips and guides. Thank you for reading and for following us regularly.