

How to Install MS DOS 7.1

MS DOS 7.1 is a modified version of MS DOS 7.10, which came with Windows 95/98 computers made by someone called Wengier. Modifications include support for long file names, support for the FAT 32 file system, out of the box mouse support, a...

Part 1 of 3:

Downloading MS DOS 7.1

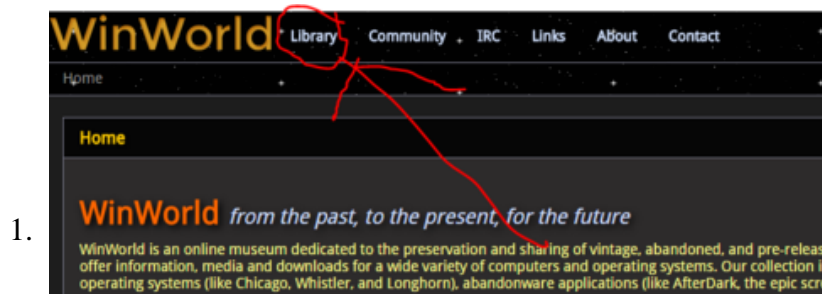
1. Picture 1 of How to Install MS DOS 7.1

Go to winworldpc.com.

1. It is possible to download from other sources but winworldpc is a trusted website which also provide MS-DOS programs.

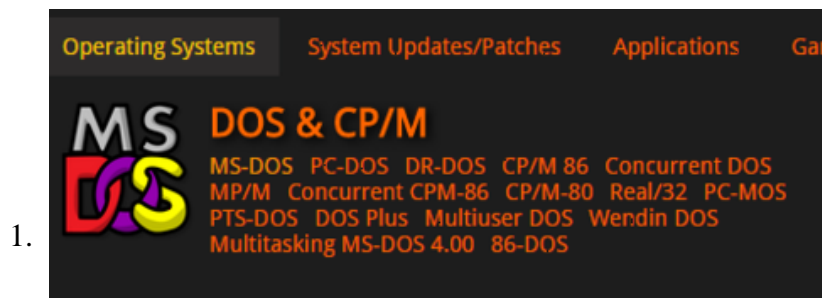
2. Picture 2 of How to Install MS DOS 7.1

Click **Library**.



3. Picture 4 of How to Install MS DOS 7.1

Click **MS-DOS** in the DOS section.

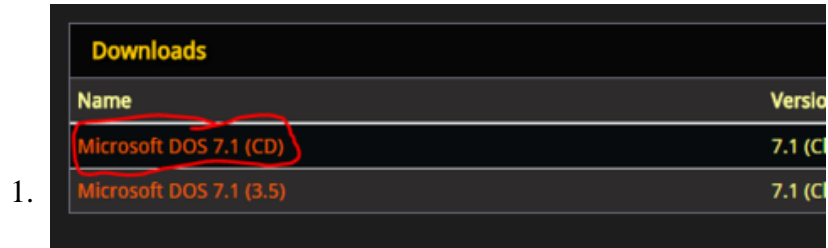


4. Picture 6 of How to Install MS DOS 7.1

Click the tab **7.1**.

5. Picture 7 of How to Install MS DOS 7.1

Choose which file you want to download.



The CD-ISO was chosen for this tutorial.

6. Picture 9 of How to Install MS DOS 7.1

Choose a mirror site (any will do) and wait for the download to finish.

1. If the download doesn't start, allow your browser to allow websites to know where you've come from.

Part 2 of 3:

Installing MS DOS 7.1

1. **Insert the CD or floppy disk, with MS-DOS 7.1 on it, into your computer and start it.**

2. Picture 10 of How to Install MS DOS 7.1

Press **Enter**.

3. Picture 11 of How to Install MS DOS 7.1

Click **Next**.

4. Picture 12 of How to Install MS DOS 7.1

Click **Next**.

5. Picture 13 of How to Install MS DOS 7.1

Make sure the 'I agree.' box is checked and click **Next**.

6. Picture 14 of How to Install MS DOS 7.1

Click **Continue**.

7. Picture 15 of How to Install MS DOS 7.1

Click **Create a FAT32/16/12 Primary Partition**.

8. Picture 16 of How to Install MS DOS 7.1

Leave all the disks in their drives and click **Reboot now**.

9. Picture 17 of How to Install MS DOS 7.1

Press **Enter**.

1. The next few steps will look exactly the same as the last few (to a point) but it's vital that you repeat them.

10. Picture 18 of How to Install MS DOS 7.1

Click **Next**.

11. Picture 19 of How to Install MS DOS 7.1

Click **Next**.

12. Picture 20 of How to Install MS DOS 7.1

Make sure the 'I agree.' box is checked and click **Next**.

13. Picture 21 of How to Install MS DOS 7.1

Click **Continue**.

14. Picture 22 of How to Install MS DOS 7.1

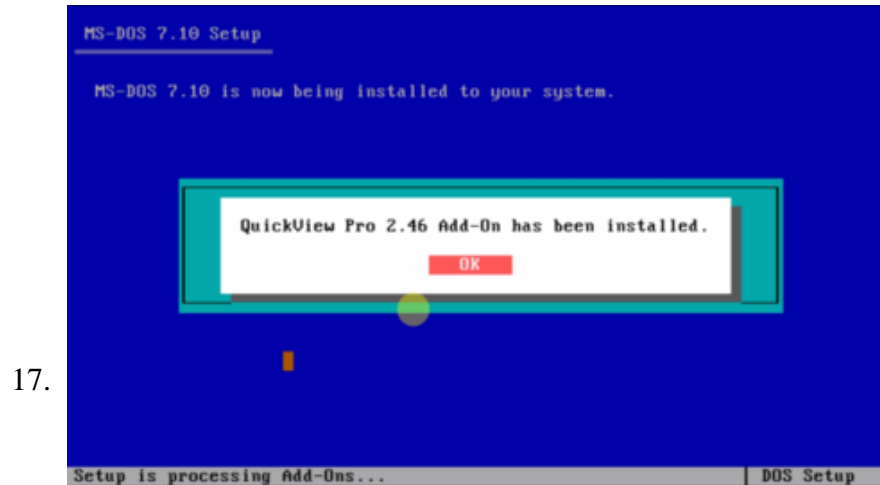
Click **Yes**.

15. Picture 23 of How to Install MS DOS 7.1

Decide where you want MS-DOS 7.1 to install and click **Next**.

16. Picture 24 of How to Install MS DOS 7.1

Click **Yes**.



Picture 26 of How to Install MS DOS 7.1

Consider installing the add-ons. The next few steps are all down to personal preferences but it is recommended that you do install all the add-ons as it makes using MS-DOS easier.

1. 'Full installation' and 'Install Add-Ons' were checked and the was clicked.

18. Picture 27 of How to Install MS DOS 7.1

Click .

19. Picture 28 of How to Install MS DOS 7.1

Confirm that the above settings are correct and click .

20. Picture 29 of How to Install MS DOS 7.1

Click if you wish to install additional add-ons (this was selected in the tutorial).

21. Picture 30 of How to Install MS DOS 7.1

Click .

22. Picture 31 of How to Install MS DOS 7.1

Click .

23. Picture 32 of How to Install MS DOS 7.1

Decide whether you want to install drivers for your sound cards (was chosen here).

24. Picture 33 of How to Install MS DOS 7.1

Click .

25. Picture 34 of How to Install MS DOS 7.1

Choose your sound card and click **Continue**.

1. Sound Blaster AWE Pnp was chosen in this tutorial.

26. Picture 35 of How to Install MS DOS 7.1

Click **OK**.

27. Picture 36 of How to Install MS DOS 7.1

Click **Yes**.

28. Picture 37 of How to Install MS DOS 7.1

Click **OK**.

29. Picture 38 of How to Install MS DOS 7.1

Click **Yes**.

30. Picture 39 of How to Install MS DOS 7.1

Click **OK**.

31. Picture 40 of How to Install MS DOS 7.1

Click **Yes**.

32. Picture 41 of How to Install MS DOS 7.1

Click **OK**.

33. Picture 42 of How to Install MS DOS 7.1

Click **Yes**.

34. Picture 43 of How to Install MS DOS 7.1

Click **Yes**.

35. Picture 44 of How to Install MS DOS 7.1

Click **OK**.

36. Picture 45 of How to Install MS DOS 7.1

Click **Yes**.

37. Picture 46 of How to Install MS DOS 7.1

Click .

38. Picture 47 of How to Install MS DOS 7.1

Click .

39. Picture 48 of How to Install MS DOS 7.1

Click .

40. Picture 49 of How to Install MS DOS 7.1

Click .

41. Picture 50 of How to Install MS DOS 7.1

Click .

42. Picture 51 of How to Install MS DOS 7.1

Click .

43. Picture 52 of How to Install MS DOS 7.1

Click .

44. Picture 53 of How to Install MS DOS 7.1

Click .

45. Picture 54 of How to Install MS DOS 7.1

Click .

46. Picture 55 of How to Install MS DOS 7.1

Click .

47. Picture 56 of How to Install MS DOS 7.1

Click .

48. Picture 57 of How to Install MS DOS 7.1

Click .

49. Picture 58 of How to Install MS DOS 7.1

Click **Yes**.

50. Picture 59 of How to Install MS DOS 7.1

Click **Yes**.

51. Picture 60 of How to Install MS DOS 7.1

Click **Yes**.

52. Picture 61 of How to Install MS DOS 7.1

Click **Yes**.

53. Picture 62 of How to Install MS DOS 7.1

Click **No**.

1. It will put you in an endless loop if you click **Yes**.

54. Picture 63 of How to Install MS DOS 7.1

Click **Yes**.

55. Picture 64 of How to Install MS DOS 7.1

Click **Yes**.

56. Picture 65 of How to Install MS DOS 7.1

Click **Yes**.

57. Picture 66 of How to Install MS DOS 7.1

Click **Yes**.

58. Picture 67 of How to Install MS DOS 7.1

Click **Enable both UMB and EMS**.

59. Picture 68 of How to Install MS DOS 7.1

Click **Load both**.

60. Picture 69 of How to Install MS DOS 7.1

Ensure all the options are checked and click **Continue**.

61. Picture 70 of How to Install MS DOS 7.1

Choose your keyboard and click **Continue**.

1. UK users, check the 850 box.

62. Picture 71 of How to Install MS DOS 7.1

Choose the keyboard layout you would like and click **Continue**.

63. Picture 72 of How to Install MS DOS 7.1

Click **OK**.

64. Picture 73 of How to Install MS DOS 7.1

Remove the setup disk and click **Yes** to reboot the computer.

65. Picture 74 of How to Install MS DOS 7.1

Press any key to continue.

66. Picture 75 of How to Install MS DOS 7.1

The setup is now complete and you can now explore all that MS-DOS 7.1 has to offer.

Part 3 of 3:

Shutting Down

1. Picture 76 of How to Install MS DOS 7.1

Make sure the DOS prompt shows only C:

2. **Picture 77 of How to Install MS DOS 7.1**

Type, without the quotation marks, "shutdown".

3. **Picture 78 of How to Install MS DOS 7.1**

Type **S**. Your computer should now shutdown.

4. To restart the computer, type 'shutdown' then press **r** or press the following keys **Ctrl** **Alt**

You finished reading the article "How to Install MS DOS 7.1" edited by the [TipsMake](#) team. We hope this article has provided you with many useful tech tips and t
