

How to Install Kali Linux NetHunter on Android

Kali Linux is the most popular security and penetration testing operating system in the world. Thanks to the NetHunter project, you can now install Kali Linux on your Android phone.

Kali Linux is the most popular security and penetration testing operating system in the world. Thanks to the NetHunter project, you can now install Kali Linux on your Android phone.

NetHunter is a portable version of Kali Linux and is designed for Android devices. It is a powerful tool for penetration testing. This guide shows how to install NetHunter on any non-rooted Android phone.

If you are interested in penetration testing, you should also check out the best pentest tools available today.

What is Kali Linux NetHunter?

Kali Linux NetHunter is a portable version of the popular Kali Linux security operating system. You can install it on any non-rooted Android phone to run many penetration testing tools from your phone.

Kali NetHunter is available in 3 editions:

1. NetHunter Rootless for Non-Rooted Android Phones
2. NetHunter for rooted phones with custom recovery and NetHunter specific kernel
3. NetHunter Lite for phones with custom recovery

The NetHunter toolkit, for all three editions, is made up of the following:

1. NetHunter App Store with hundreds of security apps
2. Kali Linux container includes all the applications available in Kali Linux
3. Android app to access NetHunter App Store
4. NetHunter KeX (Desktop Experience) for running Kali desktop sessions. NetHunter KeX includes screen recording and projection support.

Steps to install Kali Linux NetHunter on Android

The only requirement to install Kali Linux Nethunter is a phone running Android 7 or later. We recommend using Android versions before 12, as later versions monitor and kill app processes when they consume too much processing power.

Step 1: Install Termux on your phone

1. While you can download Termux from the Google Play Store, this variant is deprecated: it doesn't receive updates and contains bugs and an outdated repository. You should install the latest version from Termux's GitHub page.

Download the app by clicking on the option highlighted above. The download will take a few seconds, depending on your internet speed. Click on the downloaded file to install.

2. By default, your phone does not allow you to install apps from unknown sources. In that case, you have to set the permissions by tapping on '**Settings**'.

3:56 AM



Downloads



Using 29.93 MB of 102.25 GB

Oct 6, 2022



termux-app_v0.118.0+github-debug_...
31.38 MB · objects.githubusercontent.com



Chrome

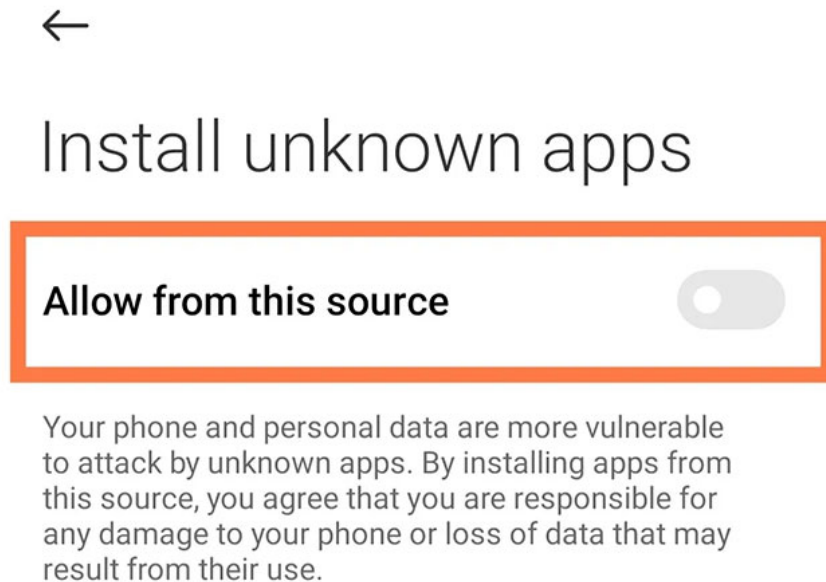
For your security, your phone is not allowed to install unknown apps from this source.

CANCEL

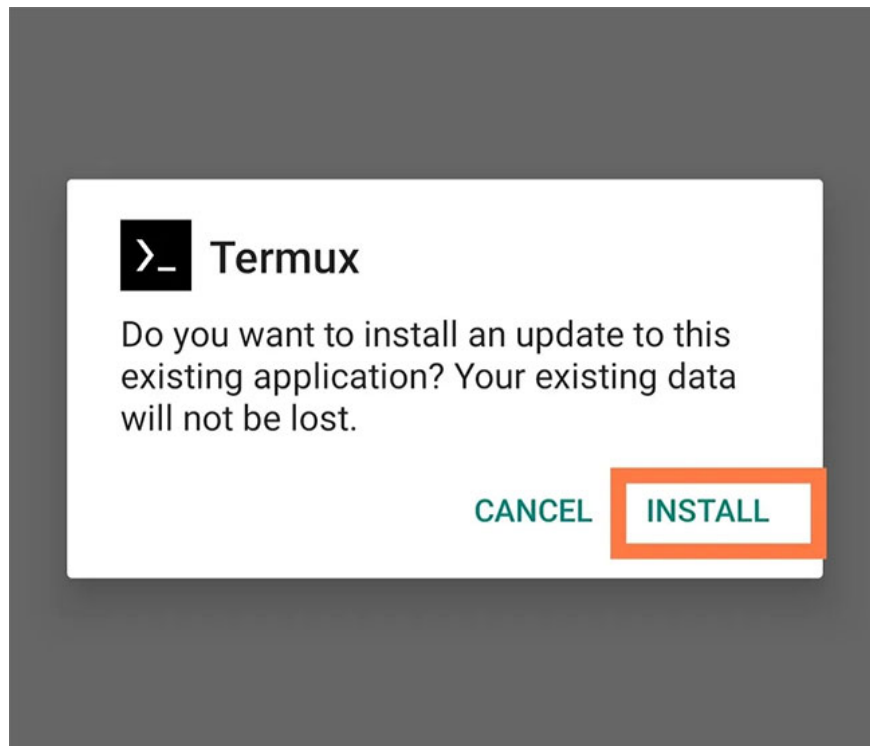
SETTINGS



3. The phone will redirect you to the settings page where you can choose to allow app installation from your browser, as shown:



4. You will come to the **Install** option which allows you to install the application.



Step 2: Upgrade the repository

Once Termux is installed, you should update the repositories. Debian Linux and most of its derivatives use APT (Advanced Package Tool) to install software.

By running the update command, package source information is retrieved from the configured resources. The upgrade command will use the information to upgrade all packages to the latest version.

You can also learn basic Linux commands to use Termux better.

First, run the update command:

```
apt update
```

Enter the following command:

```
apt upgrade
```

When asked "*Do you want to continue?*" press **Y** and **Enter**.

Next, set storage permissions for the Termux application using the following command:

```
termux-setup-storage
```

Welcome to Termux!

Docs: <https://termux.dev/docs>
Donate: <https://termux.dev/donate>
Community: <https://termux.dev/community>

Working with packages:

- Search: `pkg search <query>`
- Install: `pkg install <package>`
- Upgrade: `pkg upgrade`

Subscribing to additional repositories:

- Root: `pkg install root-repo`
- X11: `pkg install x11-repo`

For fixing any repository issues,
try 'termux-change-repo' command.

Report issues at <https://termux.dev/issues>

- \$ `termux-setup-storage`

ESC / - HOME : END PGUP

= CTRL ALT - : - PGDN

1 2 3 4 5 6 7 8 9 0

q w e r t y u i o p

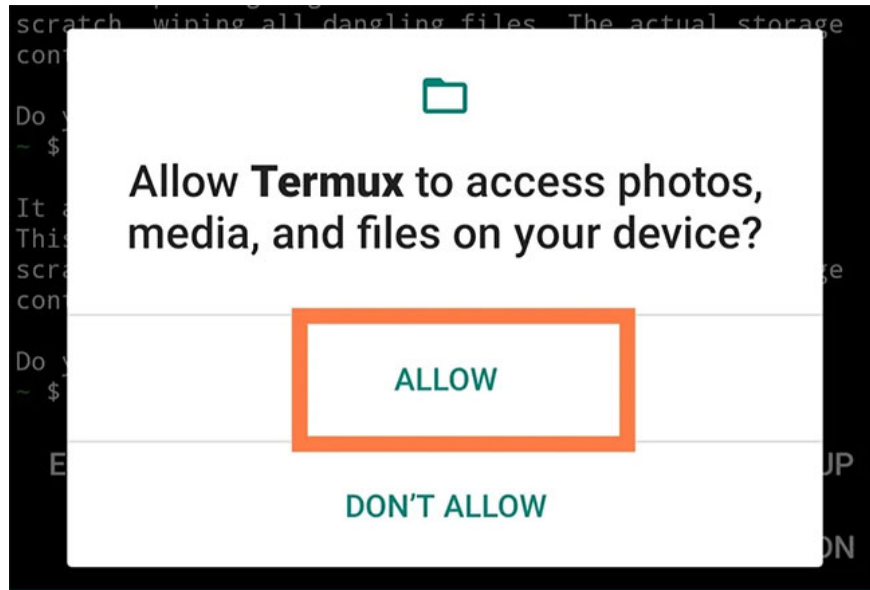
a s d f g h j k l

↑ z x c v b n m ↵

?123 , 🌐 English . ↩



This will trigger a pop-up asking if you want to allow Termux to access files on your device. Tap '**Allow**'.



Step 3: Install NetHunter

1. Install Wget by running this command:

```
apt install wget
```

Welcome to Termux!

Docs: <https://termux.dev/docs>
Donate: <https://termux.dev/donate>
Community: <https://termux.dev/community>

Working with packages:

- Search: `pkg search <query>`
- Install: `pkg install <package>`
- Upgrade: `pkg upgrade`

Subscribing to additional repositories:

- Root: `pkg install root-repo`
- X11: `pkg install x11-repo`

For fixing any repository issues,
try 'termux-change-repo' command.

Report issues at <https://termux.dev/issues>

```
- $ apt install wget
```

ESC / - HOME : END PGUP
= CTRL ALT - : - PGDN

1 2 3 4 5 6 7 8 9 0

q w e r t y u i o p

a s d f g h j k l

↑ z x c v b n m ↵

?123 , 🌐 English . ↵



When asked, "*Do you want to continue?*", answer **Y** .

Download the NetHunter installation file by running the command below. Make sure you enter the correct address.

```
wget -O install-nethunter-termux https://offs.ec/2MceZWr
```

Welcome to Termux!

Docs: <https://termux.dev/docs>
Donate: <https://termux.dev/donate>
Community: <https://termux.dev/community>

Working with packages:

- Search: `pkg search <query>`
- Install: `pkg install <package>`
- Upgrade: `pkg upgrade`

Subscribing to additional repositories:

- Root: `pkg install root-repo`
- X11: `pkg install x11-repo`

For fixing any repository issues,
try 'termux-change-repo' command.

Report issues at <https://termux.dev/issues>

```
- $ apt install wget
Reading package lists... Done
Building dependency tree... Done
Reading state information... Done
wget is already the newest version (1.21.3-4).
0 upgraded, 0 newly installed, 0 to remove and 0 not upg
raded.
- $ wget -O install-nethunter-termux https://offs.ec/2Mc
eZwr
```

ESC / - HOME | END PGUP

⌘ CTRL ALT - | - PGDN

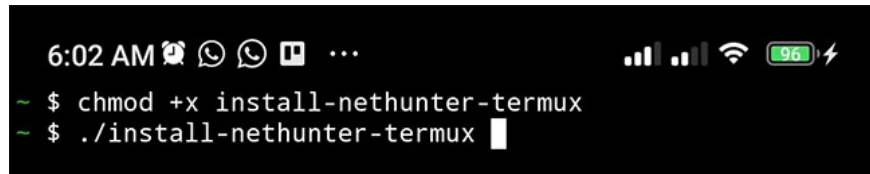
3. Adjust the permissions of the downloaded file, making it executable:

```
chmod +x install-nethunter-termux
```

A terminal window screenshot with a black background and white text. The top status bar shows the time as 6:02 AM, notification icons, signal strength, Wi-Fi, and a 96% battery level. The terminal prompt is '~ \$' followed by the command 'chmod +x install-nethunter-termux' and a white cursor bar.

4. Execute NetHunter:

```
./install-nethunter-termux
```

A terminal window screenshot with a black background and white text. The top status bar shows the time as 6:02 AM, notification icons, signal strength, Wi-Fi, and a 96% battery level. The terminal prompt is '~ \$' followed by the command 'chmod +x install-nethunter-termux' on the previous line and the current command './install-nethunter-termux' with a white cursor bar.

The installation process may take a while, depending on your Internet connection speed.

5. When asked if you want to delete the downloaded rootfs file, answer **N**, as you may need it later.

```
6:02 AM [status icons] [signal strength] [Wi-Fi] [battery]
## 88      a8P      db      88      88      ##
## 88      .88'      d88b      88      88      ##
## 88      88'      d8''8b      88      88      ##
## 88 d88      d8' '8b      88      88      ##
## 8888'88.      d8YaaaaY8b      88      88      ##
## 88P Y8b      d8''''''''8b      88      88      ##
## 88      '88.      d8'      '8b      88      88      ##
## 88      Y8b d8'      '8b 888888888 88      ##
##
#### ##### NetHunter #####

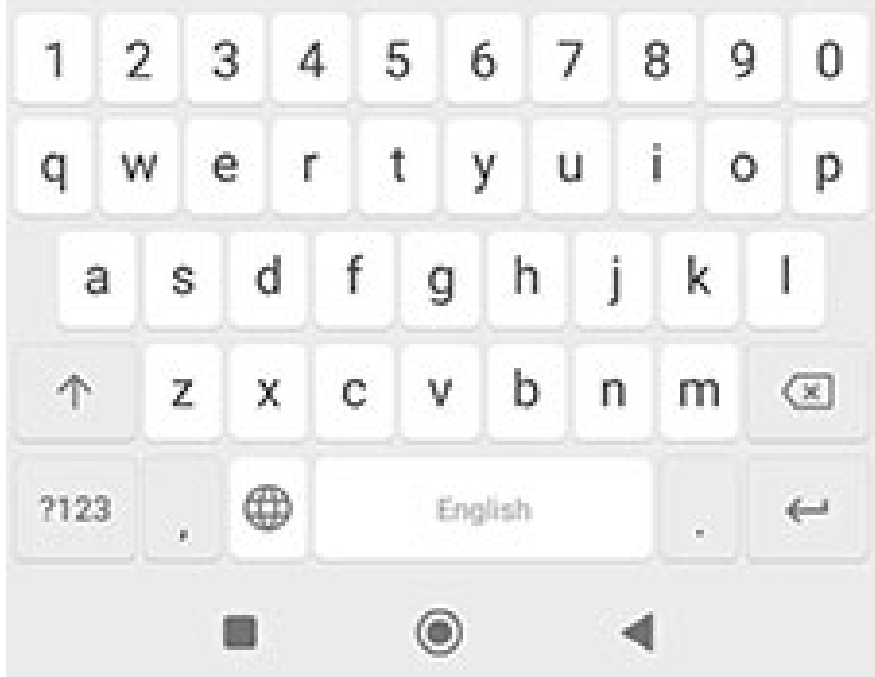
[*] Checking device architecture ...
[?] Existing rootfs directory found. Delete and create a
new one? [y/N] n

[*] Checking package dependencies...
  proot is OK
  tar is OK
  axel is OK
Reading package lists... Done
Building dependency tree... Done
Reading state information... Done
Calculating upgrade... Done
0 upgraded, 0 newly installed, 0 to remove and 0 not upg
raded.

[?] Existing image file found. Delete and download a new
one? [y/N] n
[!] Using existing rootfs archive
[!] Using existing rootfs directory

[?] Delete downloaded rootfs file? [y/N] n
```

ESC / - HOME ; END PGUP
= CTRL ALT - : - PGDN



Step 4: Start Kali NetHunter

To launch the Kali Linux NetHunter command line interface, enter the following command:

```
nethunter
```

You can also use the nh command as a shortcut for NetHunter.



```
6:06 AM [status icons]
#####
##                                     ##
##  88      a8P          db          88      88  ##
##  88      .88'        d88b         88      88  ##
##  88      88'         d8' '8b       88      88  ##
##  88 d88          d8' '8b         88      88  ##
##  8888'88.        d8YaaaaY8b       88      88  ##
##  88P   Y8b       d8' ' ' ' ' '8b   88      88  ##
##  88      '88.    d8'          '8b   88      88  ##
##  88      Y8b d8'          '8b 8888888888 88  ##
##                                     ##
####  ##### NetHunter #####

[=] Kali NetHunter for Termux installed successfully

[+] To start Kali NetHunter, type:
[+] nethunter          # To start NetHunter CLI
[+] nethunter kex passwd # To set the KeX password
[+] nethunter kex &    # To start NetHunter GUI
[+] nethunter kex stop  # To stop NetHunter GUI
[+] nethunter -r       # To run NetHunter as root
[+] nh                 # Shortcut for nethunter

- $ nethunter
```

The next step is to set the NetHunter KeX password. Note that you must exit the NetHunter CLI to run this command:

```
nethunter kex passwd
```

```
6:06 AM [status icons] [battery 96%]
#####
##
## 88      a8P          db      88      88  ##
## 88      .88'        d88b     88      88  ##
## 88      88'         d8''8b    88      88  ##
## 88 d88          d8'  '8b     88      88  ##
## 8888'88.        d8YaaaaY8b   88      88  ##
## 88P   Y8b        d8''''''''8b 88      88  ##
## 88      '88.     d8'          '8b 88      88  ##
## 88      Y8b d8'          '8b 8888888888 88  ##
##
#### ##### NetHunter #####

[=] Kali NetHunter for Termux installed successfully

[+] To start Kali NetHunter, type:
[+] nethunter          # To start NetHunter CLI
[+] nethunter kex passwd # To set the KeX password
[+] nethunter kex &    # To start NetHunter GUI
[+] nethunter kex stop  # To stop NetHunter GUI
[+] nethunter -r       # To run NetHunter as root
[+] nh                 # Shortcut for nethunter

- $ nethunter
└─$ exit
exit
- $ nethunter kex passwd
```

Start NetHunter KeX by running the following command:

```
nethunter kex
```

Please note down the RFB port number, as you will use it later.

6:07 AM

Signal strength, Wi-Fi, and battery icons

```
[+] To start Kali NetHunter, type:
[+] nethunter # To start NetHunter CLI
[+] nethunter keX passwd # To set the KeX password
[+] nethunter keX & # To start NetHunter GUI
[+] nethunter keX stop # To stop NetHunter GUI
[+] nethunter -r # To run NetHunter as root
[+] nh # Shortcut for nethunter
```

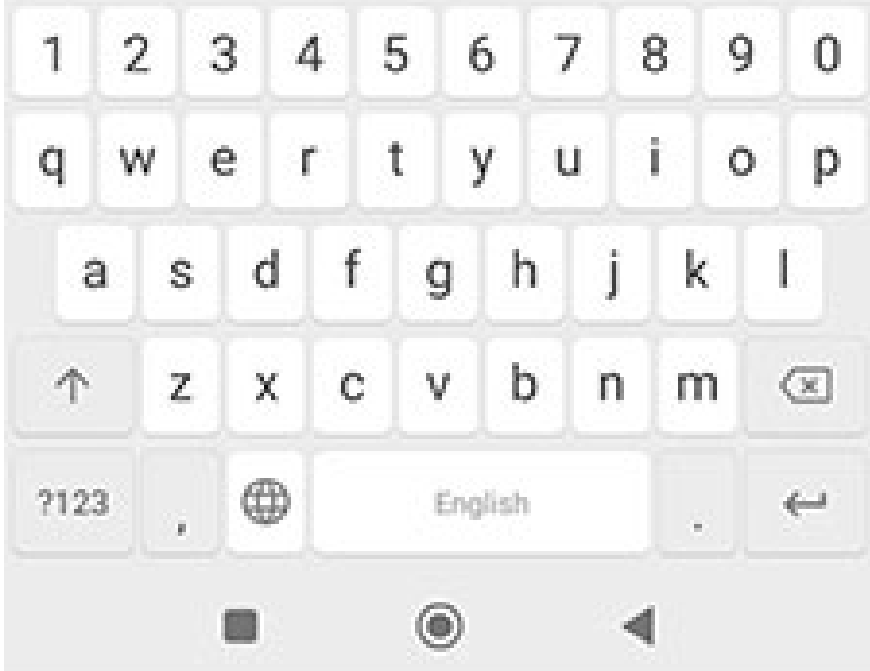
```
- $ nethunter
└─$ exit
exit
- $ nethunter keX passwd
Password:
Verify:
Would you like to enter a view-only password (y/n)? n
A view-only password is not used
- $ nethunter keX
vncserver: No matching VNC server running for this user!
vncserver: No matching VNC server running for this user!
```

NetHunter KeX server sessions:

X DISPLAY #	RFB PORT #	RFB UNIX PATH	PROCESS
ID # SERVER			
1	5901		28320
	Xtigger		

You can use the KeX client to connect to any of these displays.

ESC / - HOME ; END PGUP
= CTRL ALT - : - PGDN



At this point, NetHunter is up and running, but you must configure your monitor to use the software.

Step 5: Install NetHunter KeX

NetHunter KeX is the App Store for NetHunter. This app store contains a variety of tools that you might not find on your regular app store. Don't confuse it with Samsung Dex.

1. Go to the NetHunter App Store website.
2. Download and install the NetHunter store app.



What is the Kali NetHunter App Store?

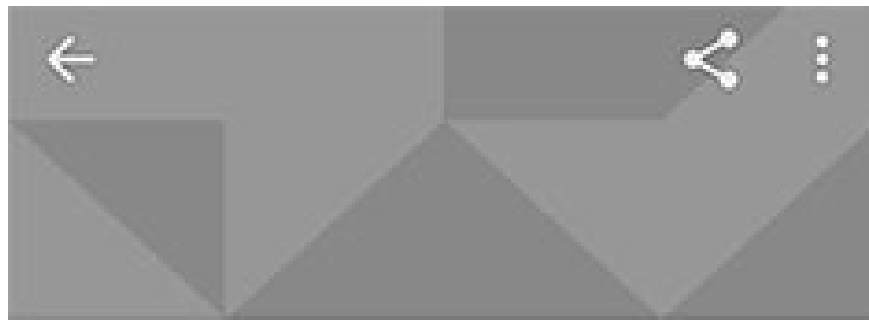
The Kali NetHunter App Store is an installable catalogue of Android applications for penetration testing and forensics. The client makes it easy to browse, install, and keep track of updates on your device.

[DOWNLOAD STORE APP](#)

PGP Signature



3. Launch the app store, search for **NetHunter KeX** and install it.



NetHunter KeX

by Kali Linux

Updated 2 months ago

INSTALL

NEW IN VERSION V4.0.7-6

v4.0.7-6

- Set default input mode to trackpad for NetHunter KeX

v4.0.7-4

- Set defaults for NetHunter KeX

v4.0.7-3

- Set defaults for NetHunter KeX

v4.0.7-2

- Default to NetHunter KeX on localhost:1

v4.0.7-1

- Forked for NetHunter KeX

v4.0.4

- Fix for scrolling in Single Handed mode

v4.0.3

- Updated sshlib

v4.0.2

- Fixes for widget names

- Fixes for Fit-to-screen scaling

- Default Input Mode support

v4.0.1

- Text contrast fix for certain devices

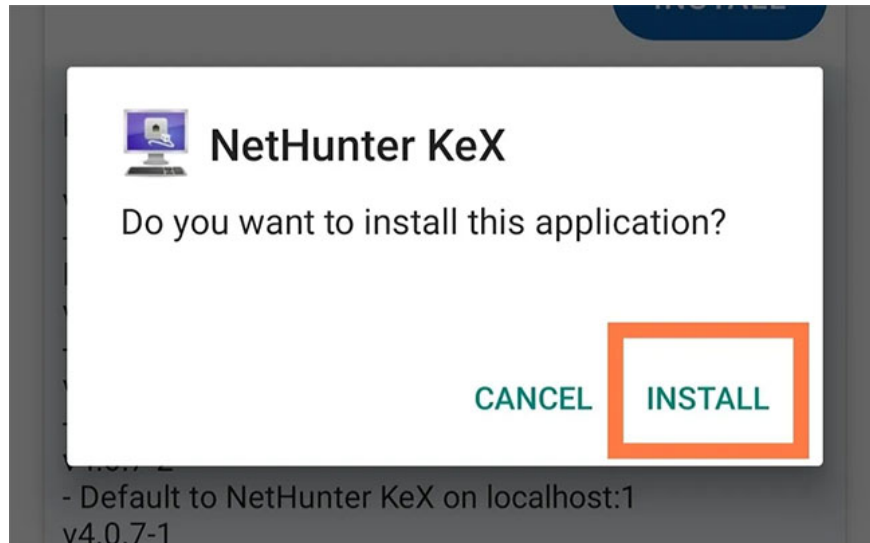
- Targeting new APIs

- Fix for Menu + immersive mo

Customized version of bVNC for NetHunter KeX



4. Once the NetHunter Store app downloads the NetHunter KeX app, you will be asked if you want to install it. Tap **'Install'**.



5. Launch NetHunter KeX. The application will ask you to enter your KeX username and password. The username is optional; in our example case, we won't need it. Enter the password you set earlier and make sure the port number is the same as the one you had when configuring NetHunter KeX, then click **'Connect'**.

6. If you followed all the steps correctly, you will have Kali NetHunter GUI running on your Android phone.

For your comfort, you can choose any of the input modes: Direct Swipe Pan, Direct Hold Pan, Single Hand, and Simulated Touchpad. Direct Swipe Pan mode allows you to control the mouse directly by touching it. When you click, the mouse will click where you click.

To use Direct Hold Pan mode, press and hold to start. Tapping makes the mouse click where you touch. Simulated Touchpad mode turns your screen into a simulated touchpad. Finally, Single Hand mode works similarly to Direct and Swap Pan modes, except pressing and holding opens a menu with a list of options.

You finished reading the article "**How to Install Kali Linux NetHunter on Android**" edited by the [TipsMake](#) team. We hope this article has provided you with many useful tech tips and tricks. You can search for similar articles on tips and guides. Thank you for reading and for following us regularly.