

How to install iSCSI Target on Windows Server 2019

The Internet Small Computer Systems Interface (iSCSI) is a storage network resource that uses the Internet Protocol connection to link data storage facilities.

It provides block-level access to storage locations through SCSI commands. iSCSI Target is the network (memory) location and it appears as the local hard drive for iSCSI Initiator. Basically, iSCSI Initiator is a client that connects to iSCSI Target.

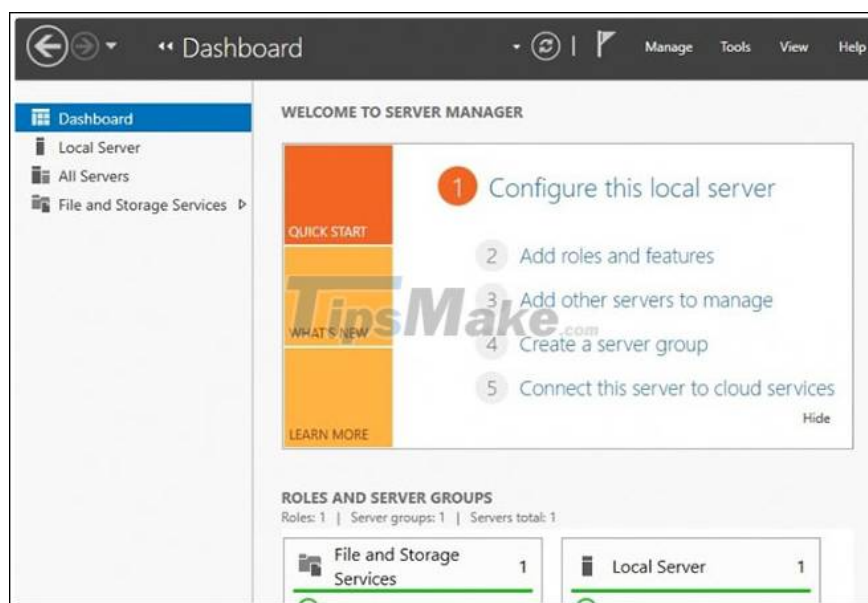
When enabled and configured, the iSCSI Target Server turns the Windows Server computer into a network storage device.

Network accessible memory is important for testing applications before installing them on the Storage Area Network (SAN).

How to install iSCSI Target on Windows Server 2019

To perform this installation, you need unlimited administrative privileges for computers running Windows Server 2019 operating systems.

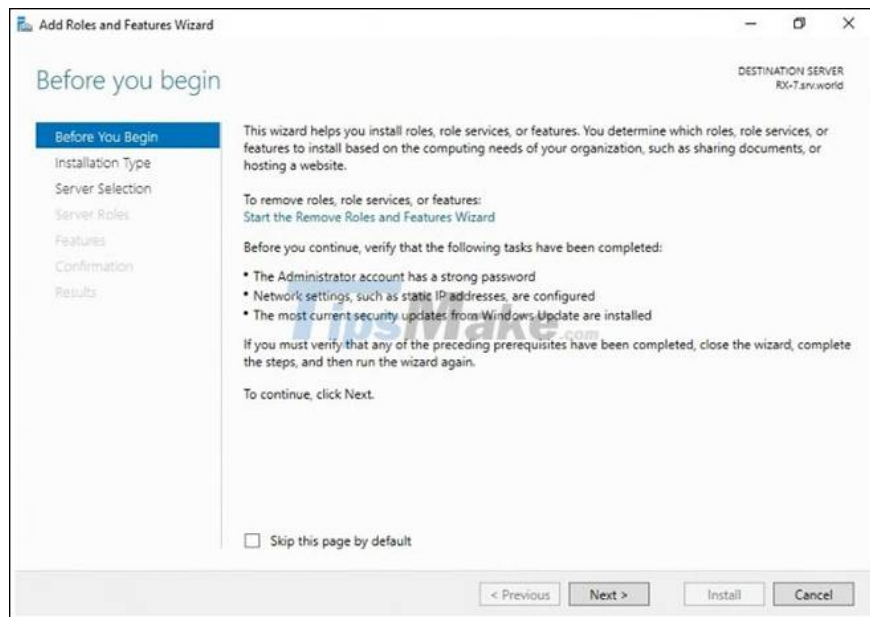
Step 1 : Run **Server Manager** on Windows Server 2019 operating system.



Step 2 : Select the tab **Add Roles and Features** .

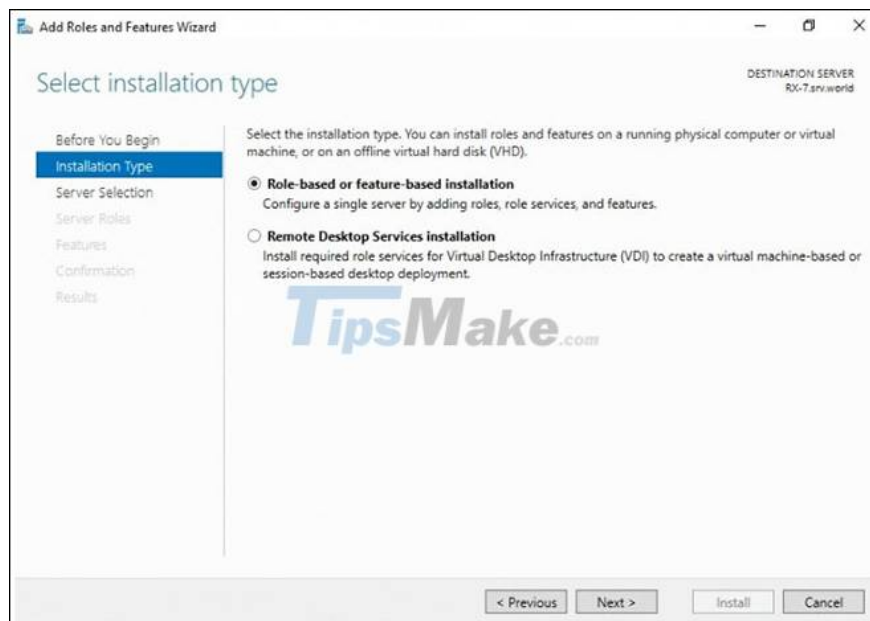
You can choose to skip the **Before you begin** step by checking the small square check box at the bottom of the page.

Click **Next** to continue the setup wizard.



Step 3 : Determine the type of iSCSI Target installation you want

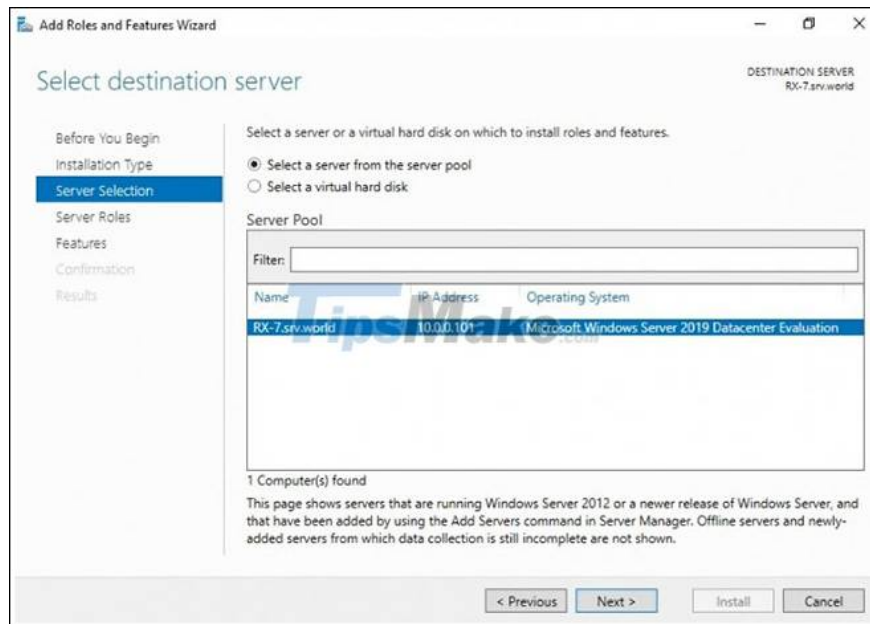
Here, click the **Role-based or Feature-based installation** button and click **Next** to continue.



Step 4 : Select the host for the roles and services of iSCSI Target.

This can be either a local server or a virtual hard drive on the server. In the example case, the local server will be used.

Click **Next** to continue.

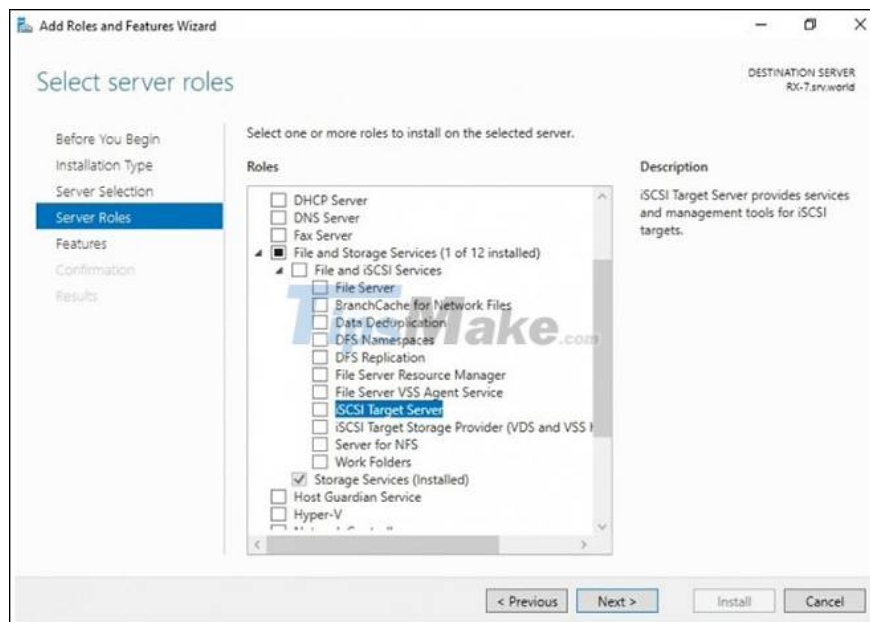


Step 5 : Select the iSCSI Server Roles.

In this step, we will define the list of server roles to install for iSCSI Target.

Click the **Files and Storage Services** tab to expand it.

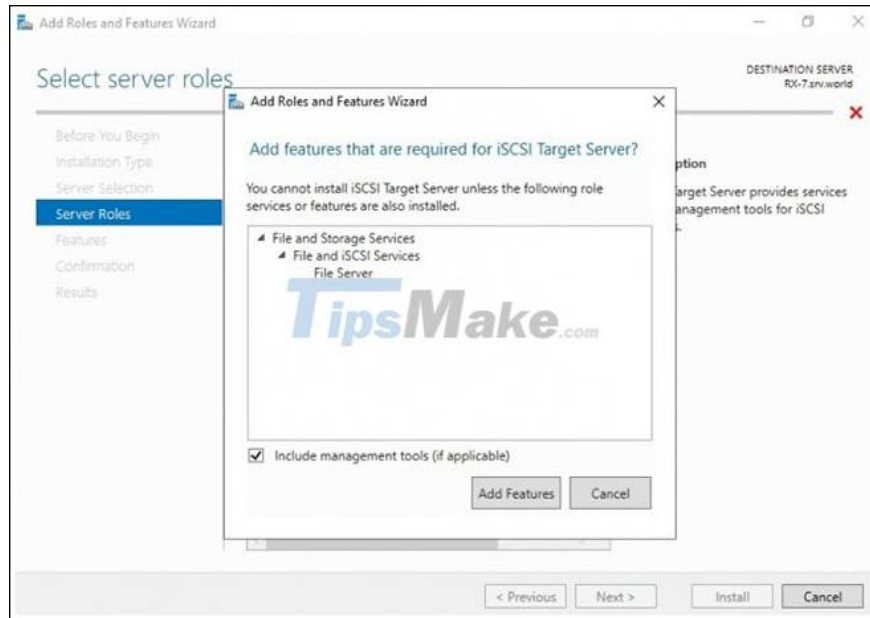
Select iSCSI Target Server, and then check the iSCSI Target Server box.



Step 6 : Add features for iSCSI Target.

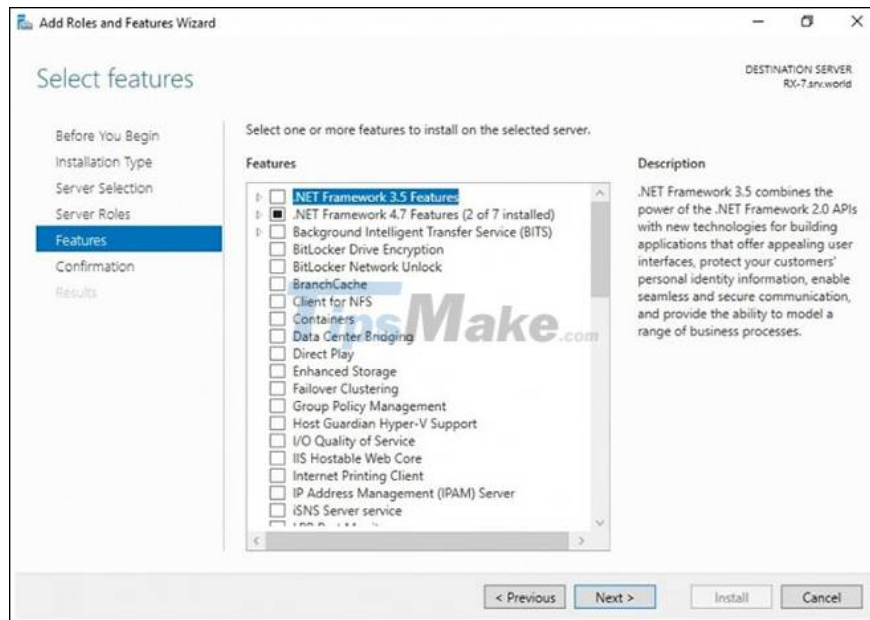
When you selected iSCSI Target Server in the previous step, a pop-up window titled **Add features that are required for iSCSI Target Server?** will open.

Here, click the **Add Features** tab and click **Next**.



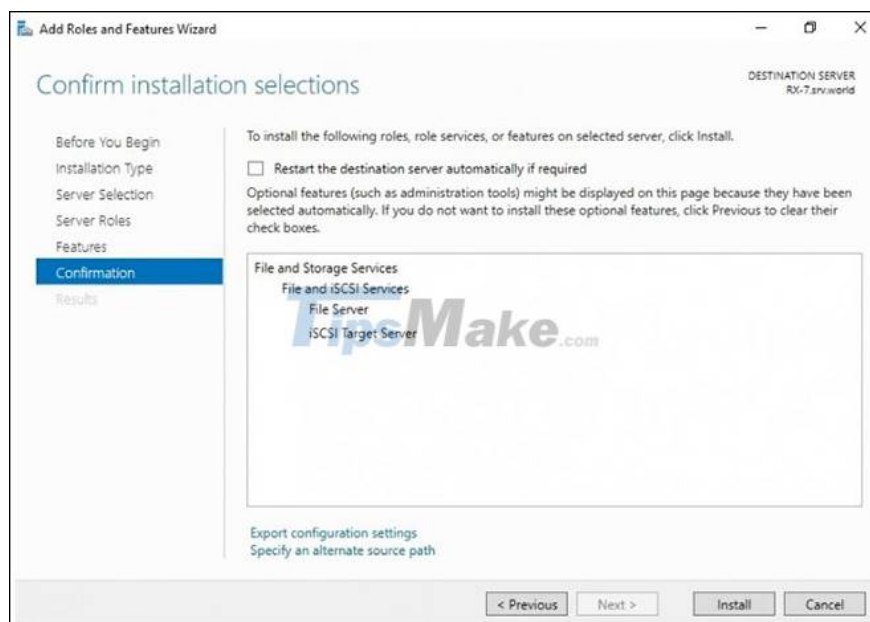
Step 7 : Select the features.

Check all additional features required to install the iSCSI Target Server and click **Next**.



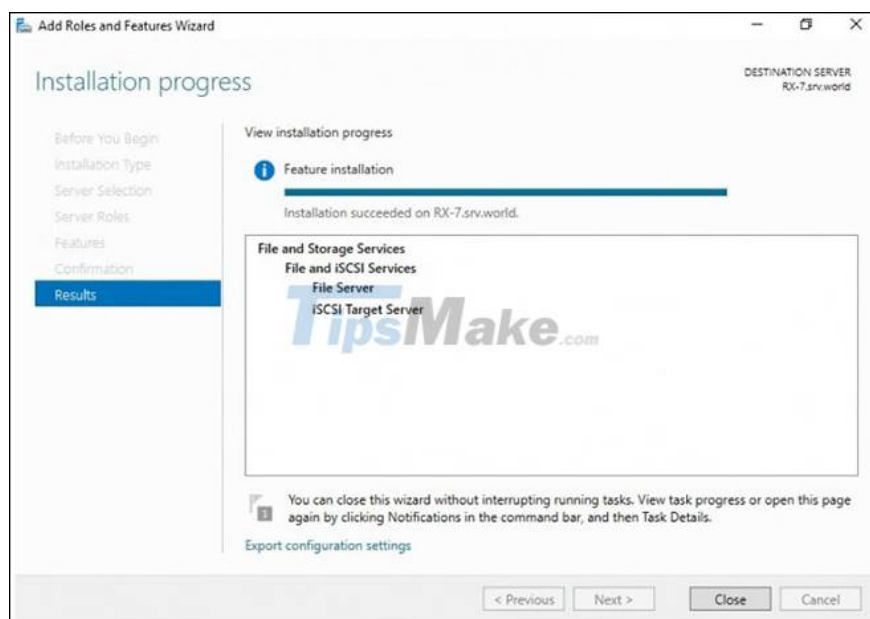
Step 8 : Confirm your installation selection.

Confirm that the iSCSI Target Server and other options you made in the steps above are listed, then select **Install**.



Step 9 : Complete the installation of iSCSI Target Server.

When the installation of selected roles, features and services is complete, click **Close** to complete the installation of the iSCSI Target Server.



You finished reading the article "**How to install iSCSI Target on Windows Server 2019**" edited by the [TipsMake](#) team. We hope this article has provided you with many useful tech tips and tricks. You can search for similar articles on tips and guides. Thank you for reading and for following us regularly.