

How to install dual boot Windows 10 and Windows Server

There are many situations where users need to set up a dual boot boot like working on an application that is incompatible with the operating system, needing a separate environment to test the tool or just want to use it with one operating system. Other.

There are many situations where users need to set up a dual boot boot like working on an application that is incompatible with the operating system, needing a separate environment to test the tool or just want to use it with one operating system. Other.

In this article, I will show you how to install dual boot in Windows 10 with Windows Server on the same computer. In the article, install Windows Server 2012 R2 as the second operating system on the computer, but these steps also apply to older Windows Server 2016 or 2008 based on the same kernel as Windows 7.

There are a few things users need to keep in mind to achieve this setting. The first is to have enough hard drive space. You can use two partitions on the same hard drive, but using separate drives will make the reinstallation process much easier and also make sure an operating system is running if one of the drives This disk is broken.

Tip : Another thing to check is that the main operating system is running in BIOS / Legacy mode and not UEFI. Users can use UEFI if they like but may have problems starting multiple operating systems in this mode.

1. Things to note when using UEFI instead of BIOS

In addition, you will need some ISO image files or installation media for the selected operating systems. If you have installed one of the operating systems on your computer and want to keep it, you only need the ISO image file for the second operating system.

If you start with an empty drive, you will have to choose the main operating system. In this example, we will install Windows 10 as the main operating system and Windows Server 2012 R2 as the second operating system.

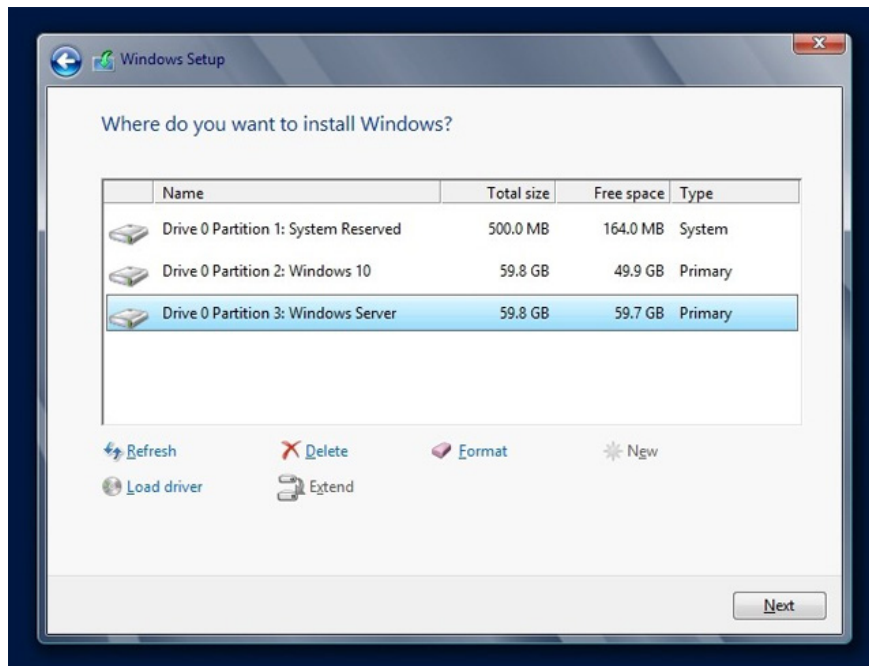
1. Install the operating system

This step is for users who have no operating system installed on their computer or who want to install a new multi-boot setup.

Connect or install the installation media (USB, DVD) for the main operating system, in this case Windows 10, and select it as the boot device when booting the computer. Press F11, F12 or Escape to access the boot menu. Each manufacturer uses its own key, so refer to the computer's user manual.

1. Instructions for entering BIOS on different computers

Once you have entered the installation screen, simply set up the installation process as usual until you reach the disk selection screen if you are using the same hard drive for both operating systems. First create a partition for the main operating system, leaving enough free space for the second operating system. Now use the remaining free space to create a second partition for the dual boot operating system.



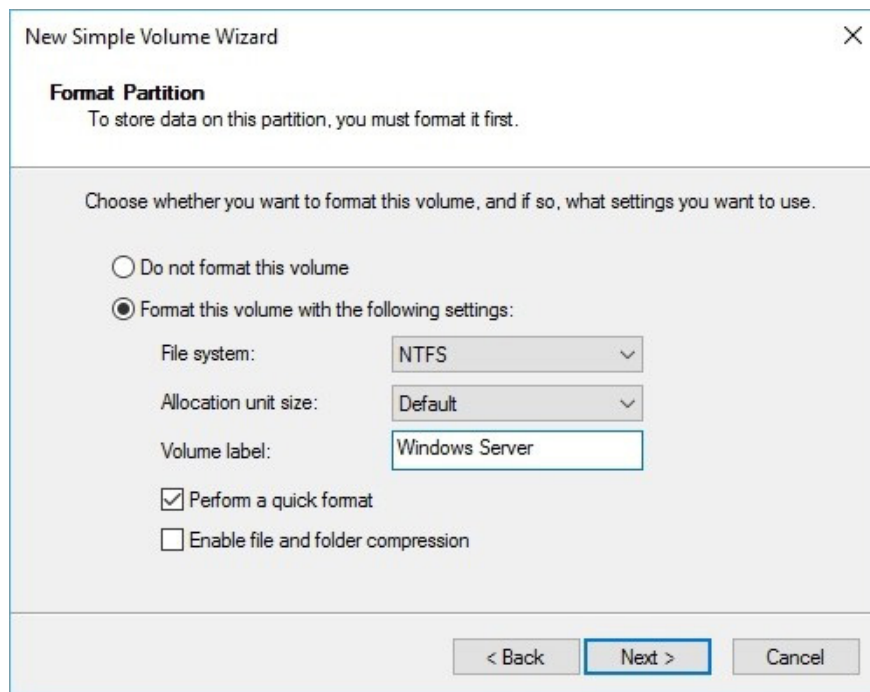
After completing the partition creation, select the first partition and the main Windows installation as usual.

2. Narrow the main operating system partition

This step is only for those who have a single partition with the main operating system and want to keep it. If there is no second drive or partition for the second operating system, you need to minimize the current operating system partition to free up space and create a new partition.

1. Collapse the system partition in Windows 7

Remember to leave enough space for the main operating system and enough for the second operating system. After recording the main operating system partition, right-click on the new unassigned space, select **New simple volume** and continue the process to create a new partition. Format it as **NTFS** and label it properly so that it can be easily recognized when installing the second operating system.

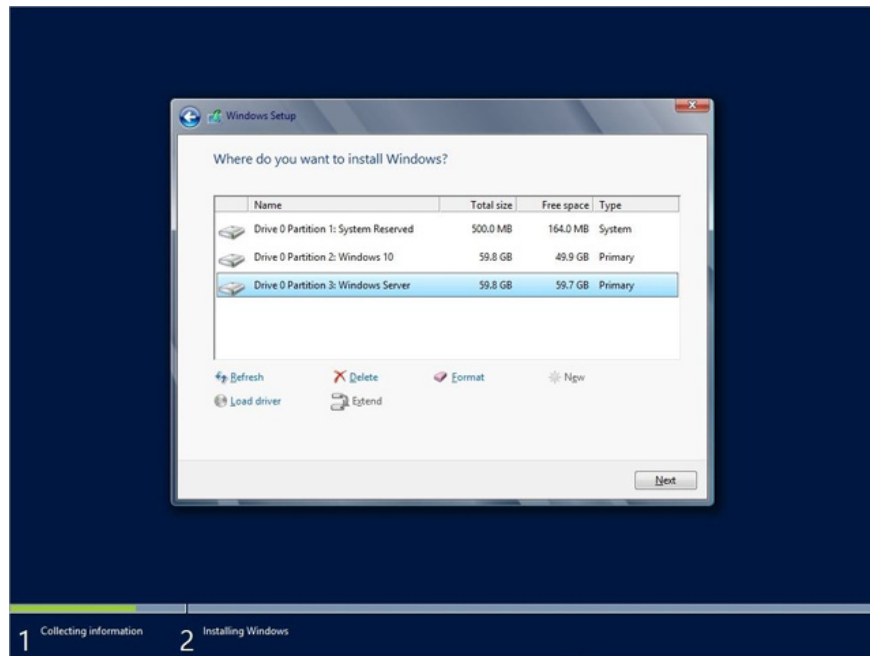


3. Install the second operating system

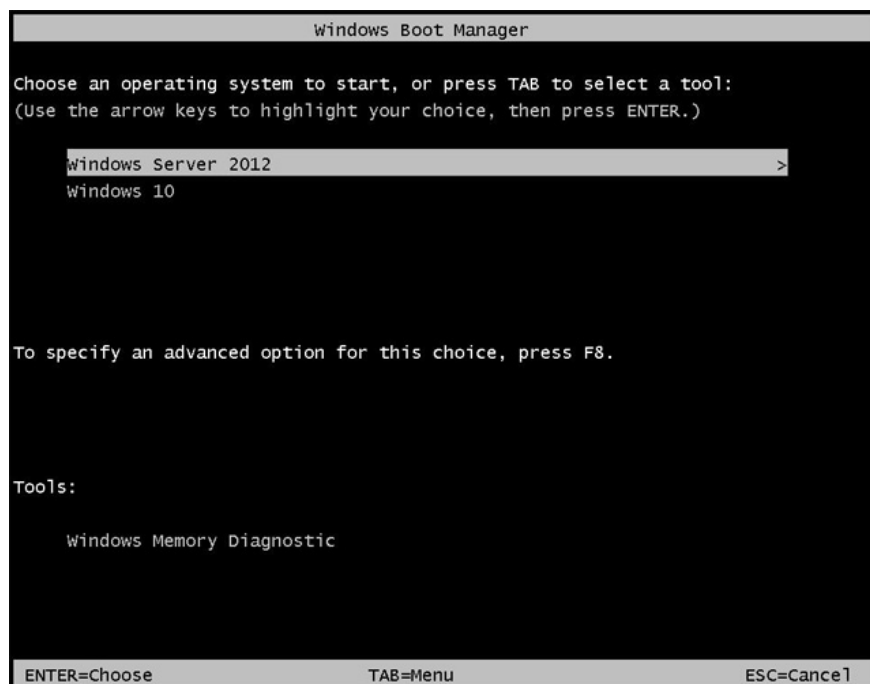
Connect the installation drive or insert the installation media for the second operating system and boot the computer from there.



Go through the setup menu and select the second partition, in this case, Windows Server, as the destination for the second operating system. Finish Windows installation as usual.



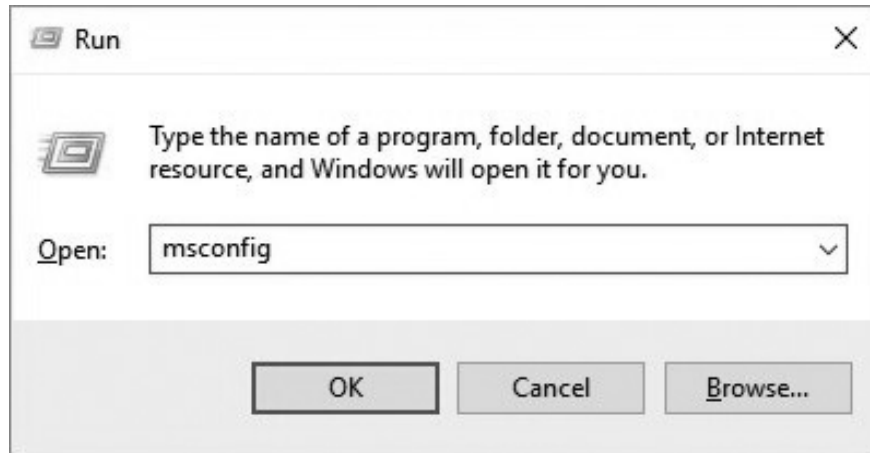
Windows usually restarts the computer multiple times during the installation process. When restarting for the first time you will be prompted with the bootloader menu like the image below. At this point, we will select the second operating system each time until the installation is complete.



Now complete the dual boot setup process with Windows 10 and Windows Server, 2012 R2. Users can choose between two operating systems from the bootloader menu every time the computer boots.

Many people will notice that the second operating system is now the default boot. But you can change it to boot another Windows installation into the main operating system by pressing **Windows + R** key to open the **Run** window, type **msconfig** and press **Enter** or click **OK**.

1. Common Run commands for Windows you should know



This will open the **System Configuration** menu. Now open the **Boot** tab, select the operating system you want to set as default by clicking on it and then clicking the **Set as default** button. Now click **Apply** and then **OK**.



Now when booting the computer, it will automatically boot into the default operating system without user input impact.

You can see more:

1. Create dual boot system of Windows 7 and Windows 8
2. Instructions for creating dual boot Windows 8 and Linux Mint systems
3. Create dual-boot menu after installing Windows XP parallel Vista / 7

I wish you all success!

You finished reading the article "**How to install dual boot Windows 10 and Windows Server**" edited by the [TipsMake](#) team. We hope this article has provided you with many useful tech tips and tricks. You can search for similar articles on tips and guides. Thank you for reading and for following us regularly.

