

# How to install DriverEasy and quickly update your computer drivers.

In just a few steps, you can install DriverEasy, software that automatically updates and installs missing drivers on your computer system quickly and easily, without the hassle and time-consuming process of other tools.

**DriverEasy** is a software program that helps you check your computer's drivers for missing or outdated drivers by scanning your entire system. However, to do this, you first need to download and install DriverEasy on your computer.



## Instructions on how to install DriverEasy on your computer.

### *Why install DriverEasy on your computer?*

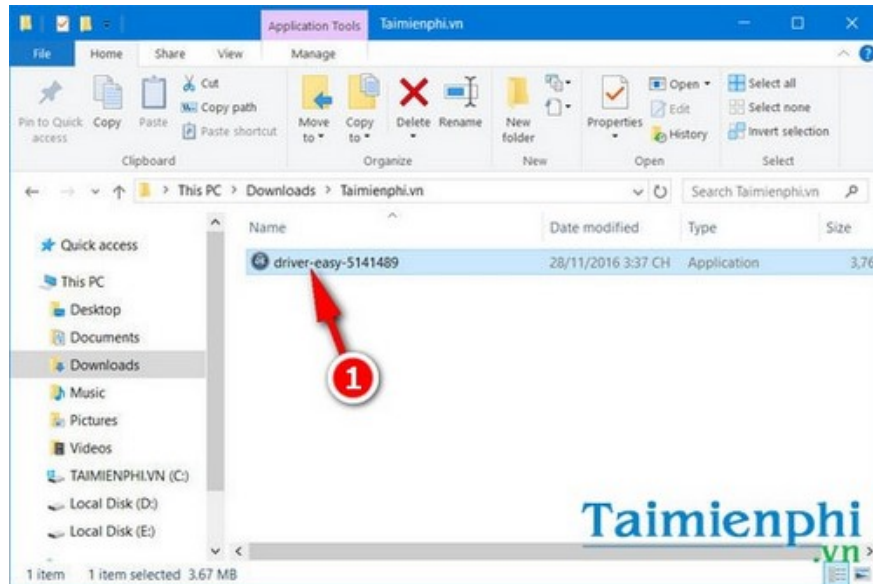
- Automatically download missing drivers and update existing drivers to the latest versions.
- Find and pinpoint the exact location of hidden drivers on your computer.
- Support for searching and providing access to over 1,000,000 drivers in its database. -
- View hardware data such as graphics cards, sound cards, network cards, etc.
- Improve the performance of components and the entire computer system.

### *System requirements:*

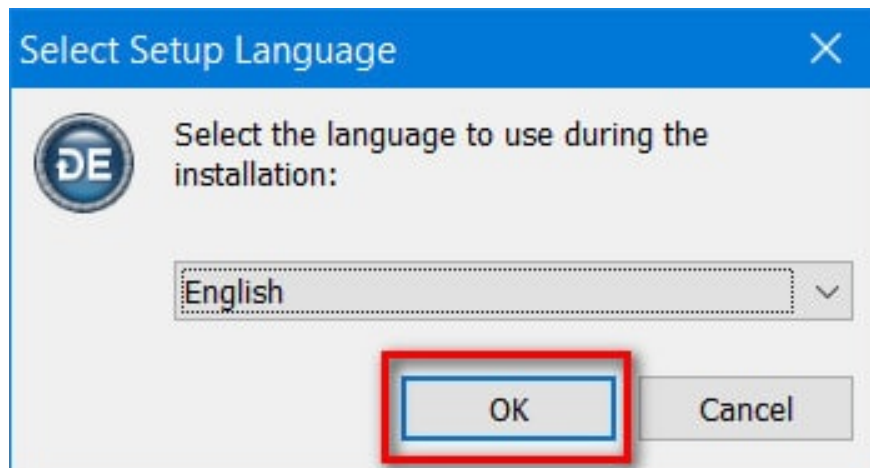
- Install DriverEasy on computers using Windows operating systems such as Windows 2K, Windows XP, Windows Vista/7/8 (32-bit and 64-bit).
- The computer must have Microsoft .NET Framework 2.0 or later installed. Download **.NET Framework**
- Use more than 128MB of RAM.

## *Instructions on how to install DriverEasy on your computer.*

**Step 1:** Download and install DriverEasy using the **DriverEasy download link**.



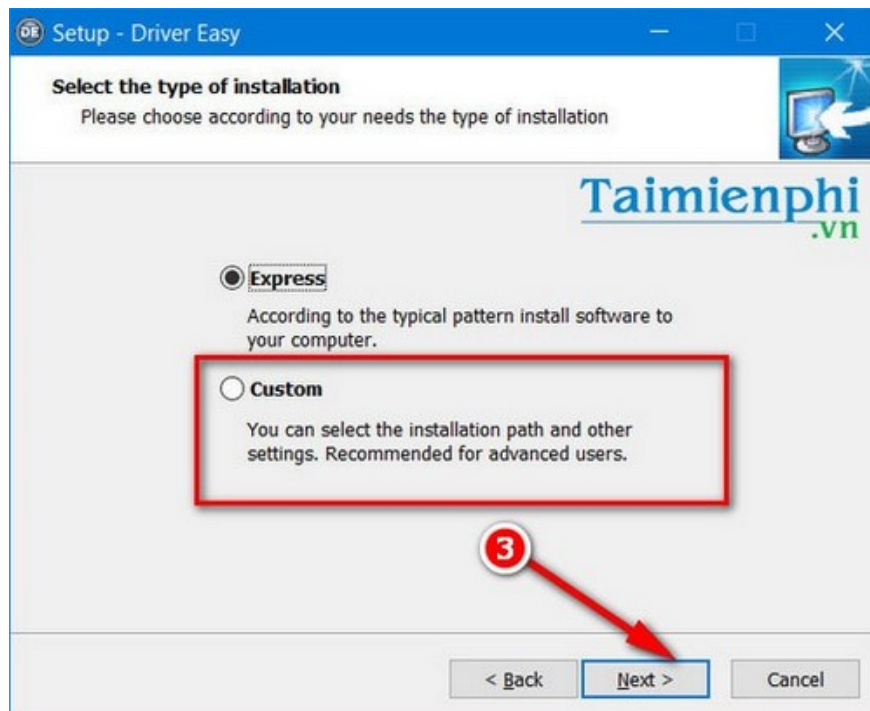
**Step 2:** At the beginning of the installation process, the manufacturer allows you to choose the appropriate language to use in DriverEasy later.  
Click **OK**.



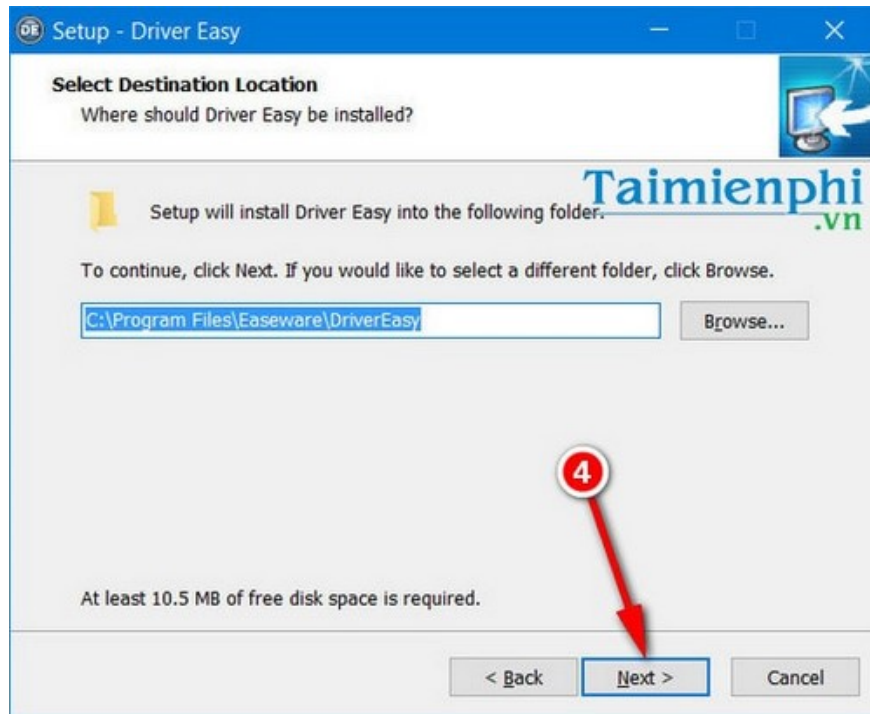
**Step 3:** Continue by clicking **Next** . A window will appear allowing you to choose the path to the DriverEasy installation folder by clicking **Browser** , or you can use the manufacturer's default path. Click **Next** .



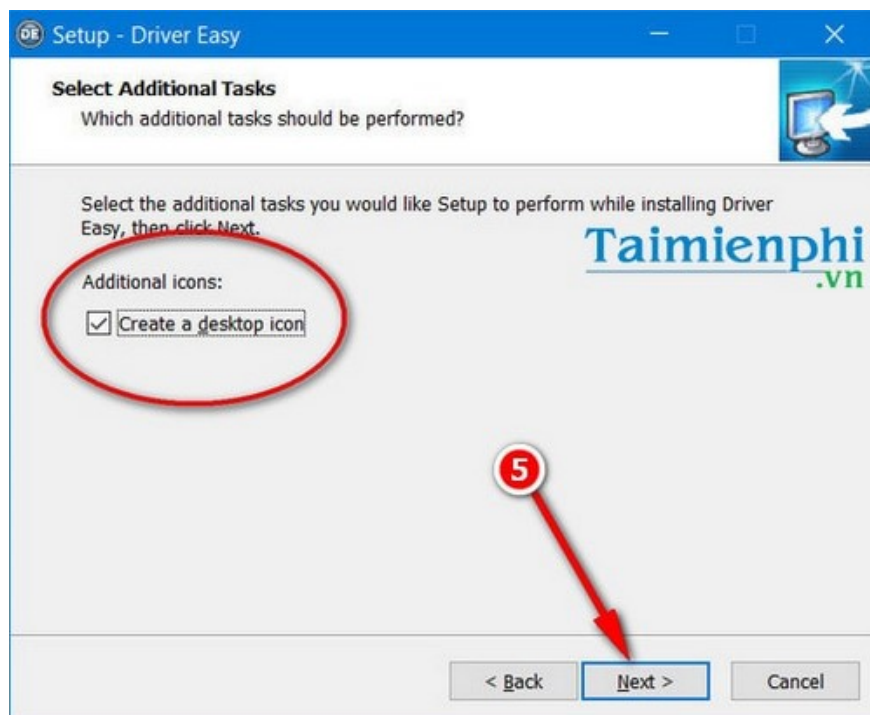
There are two installation methods: **Express** (Quick Install) and **Custom** (Custom Install). You can choose between the two, but TipsMake recommends using the Custom install method to avoid having unnecessary software installed.



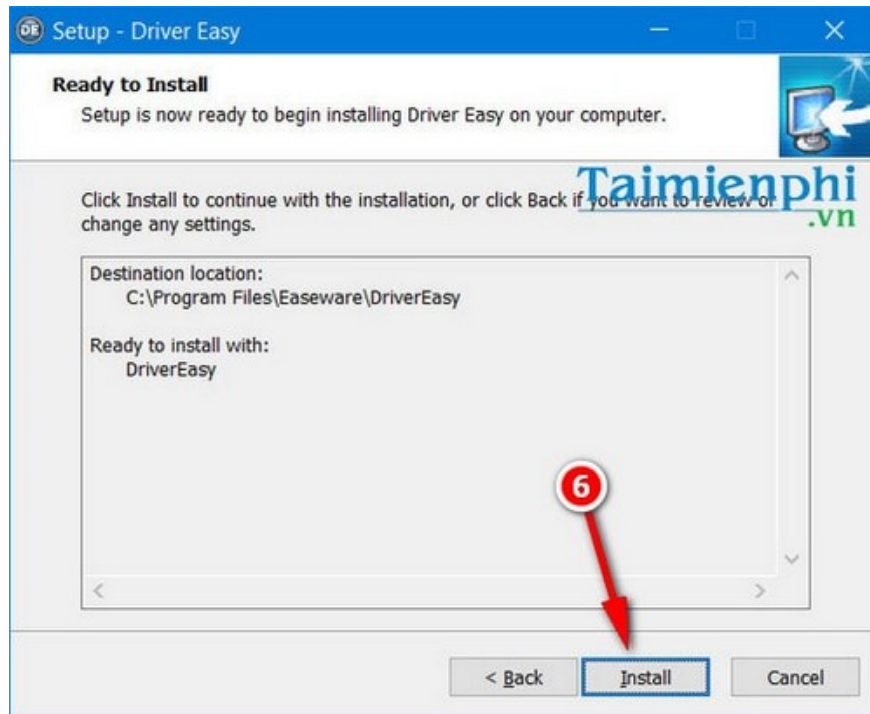
Choose the path to save the DriverEasy installation files. Click **Next** to continue.



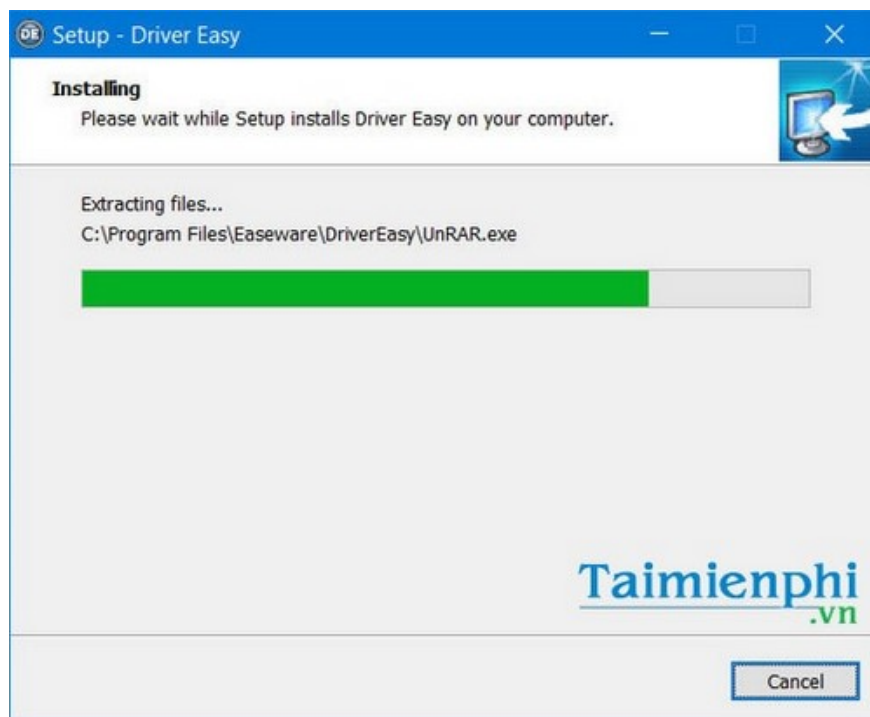
**Step 4:** Select **Create a desktop icon** if you want the DriverEasy icon to appear on your desktop when the installation is complete. Click **Next** .



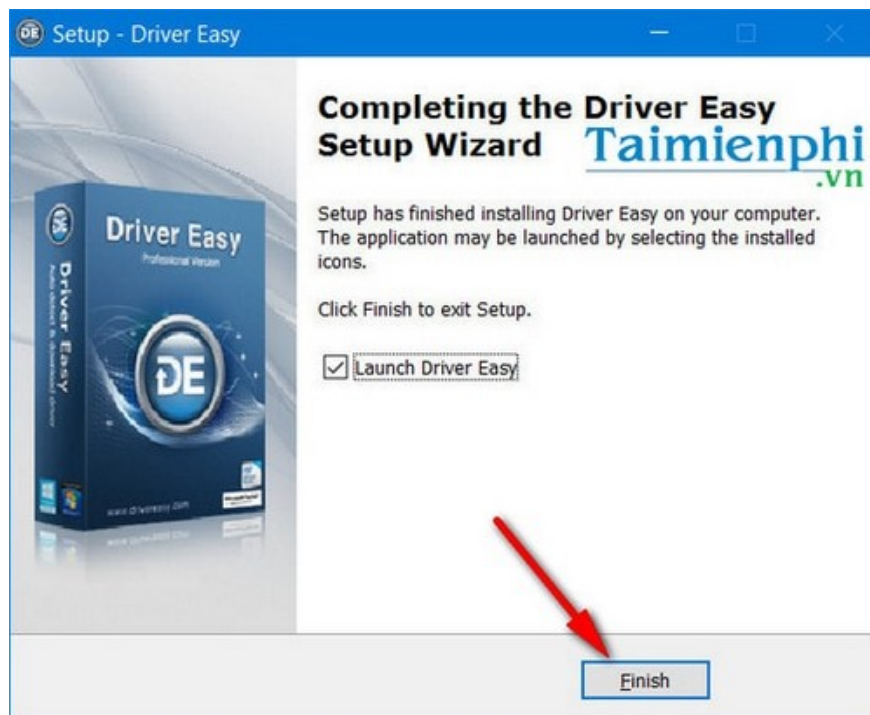
**Step 5:** This window will display the path to the folder containing the installer that you just selected. If the path is incorrect, click **Back** to return or continue by clicking **Install** to begin the installation process.



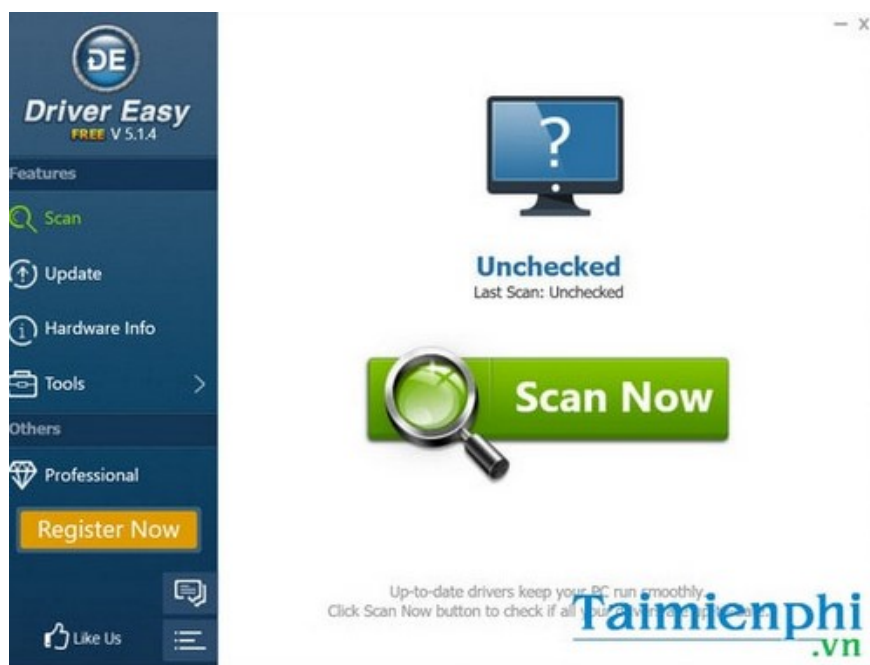
**Step 6:** The installation process takes a certain amount of time, depending on the configuration of the computer you are using.



Select **Launch DriverEasy** to open the utility immediately, then click **Finish** to close the window.



The DriverEasy installation process was successful, and the utility now has an interface as shown in the image.



The above is a guide for those who don't yet know how to install DriverEasy on their computer. With just a few simple steps, you can comfortably use the utility without any problems. Besides that, you also have many other driver search software options such as Driver Booster 2 or 3DP Chip; however, for low-spec computers, you should **download 3DP Chip**, while for computers with better specifications, you can download Driver Booster to try it out.

You finished reading the article "**How to install DriverEasy and quickly update your computer drivers.**" edited by the [TipsMake](#) team. We hope this article has provided you with many useful tech tips and tricks. You can search for similar articles on tips and guides. Thank you for reading and for following us regularly.

---