

How to Install Driver for HP Laptop with HP Support Assitant

Guide to install standard driver for HP Laptop with HP Support Assitant software. Tips to install genuine drivers for HP computers

For technical people, finding and installing drivers for the computer after installing Win is a very regular job, right.

Yes ! And a set of 'divine' tools that you still use very often is the Wandriver, because it's small, easy to use, but very full driver for all current laptops.

However, the driver installed from the WanDriver is not all 100% genuine, but it just ensures that the computer can work with that Driver only.

Installing a non-standard driver will somewhat reduce the performance of the computer, so in this article, I will guide you in detail how to install the standard driver of HP with HP Support tool. Assitant.

Note: Applies to all HP computer brands.

#first. Why should you use HP Support Assitant?

1. The reason is simple because it is a tool / software provided by HP for users of its computers and printers.
2. Safe to upgrade, install drivers for your computer.
3. Simple to use anyone can do.

#2. How to install driver with HP Support Assitant tool

Please follow the detailed step-by-step instructions below, one more thing you should read through a turn before starting to do it.



+ Step 1: You access this link [here](#) to download the HP Support Assitant tool to your computer (or you go to Google to search with the keyword HP Support Assitant to get the first result).

+ Step 2: Next, click Download HP Support Assistant link as shown below.

Automated support, updates and troubleshooting

HP Support Assistant is a one-stop solution for connected, contextual support for your PC and printers. It helps you maintain your PC—and printers—and avoid or resolve problems using automated updates and self-help options. And it's ready to go when you turn on your new HP PC with Windows or can be installed on PCs from other manufacturers for easy access to support resources and tools for HP printers.



Start using HP Support Assistant

<p>How do I open HP Support Assistant? Click on the ? icon in your system tray.</p> 	<p>How do I get HP Support Assistant? If it's not on your PC, click the button below to download and install.</p> 
--	---

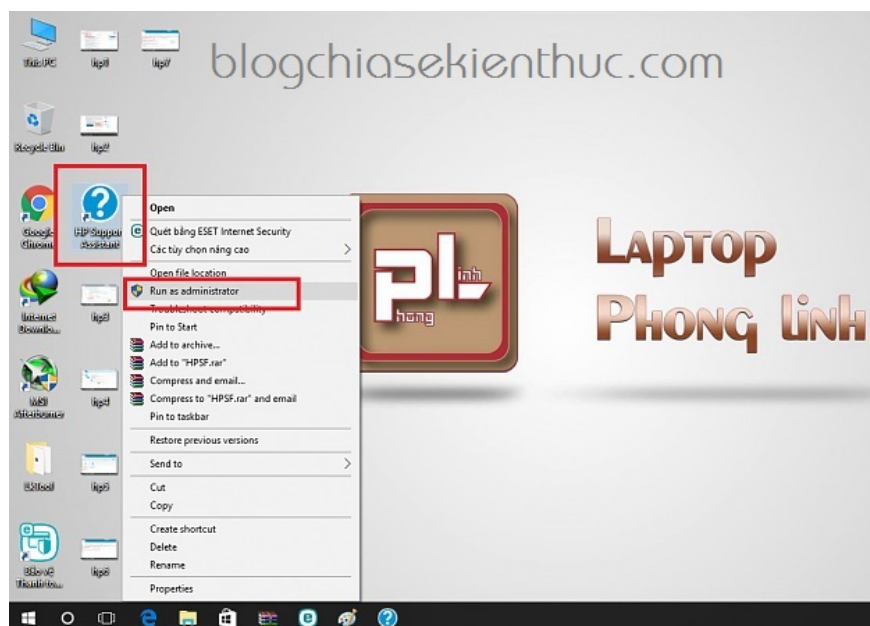
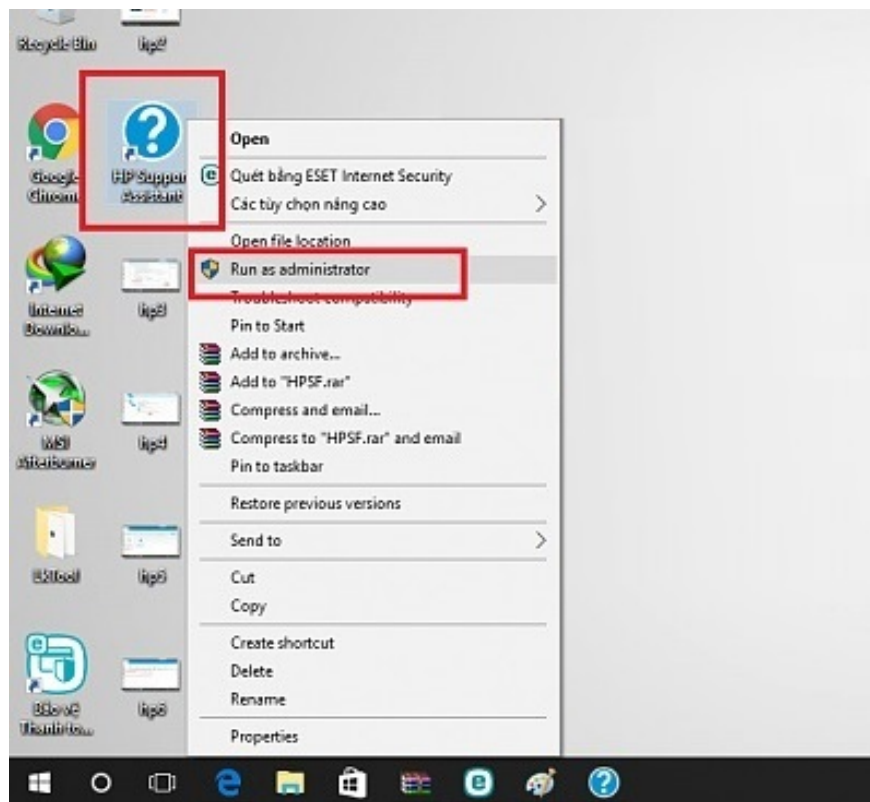
Automated support, updates and troubleshooting

HP Support Assistant is a one-stop solution for connected, contextual support for your PC and printers. It helps you maintain your PC—and printers—and avoid or resolve problems using automated updates and self-help options. And it's ready to go when you turn on your new HP PC with Windows or can be installed on PCs from other manufacturers for easy access to support resources and tools for HP printers.

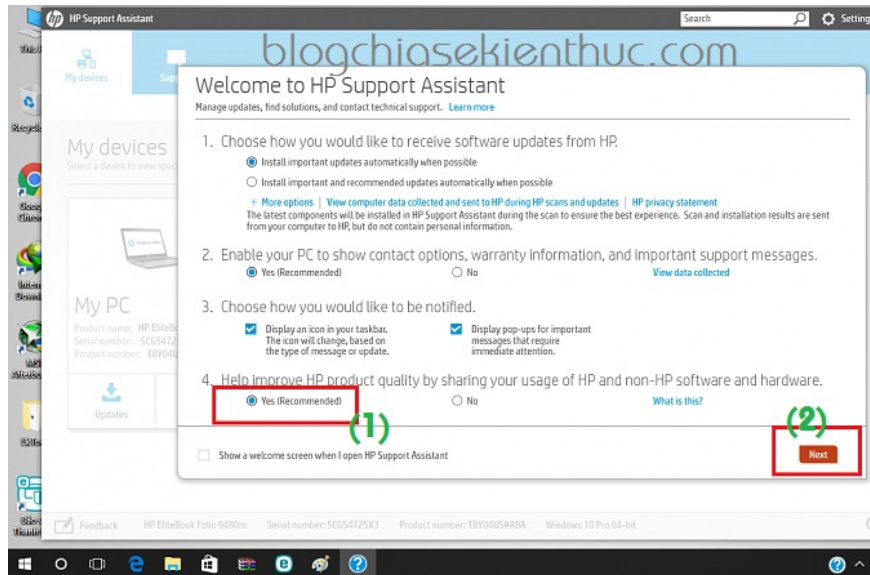
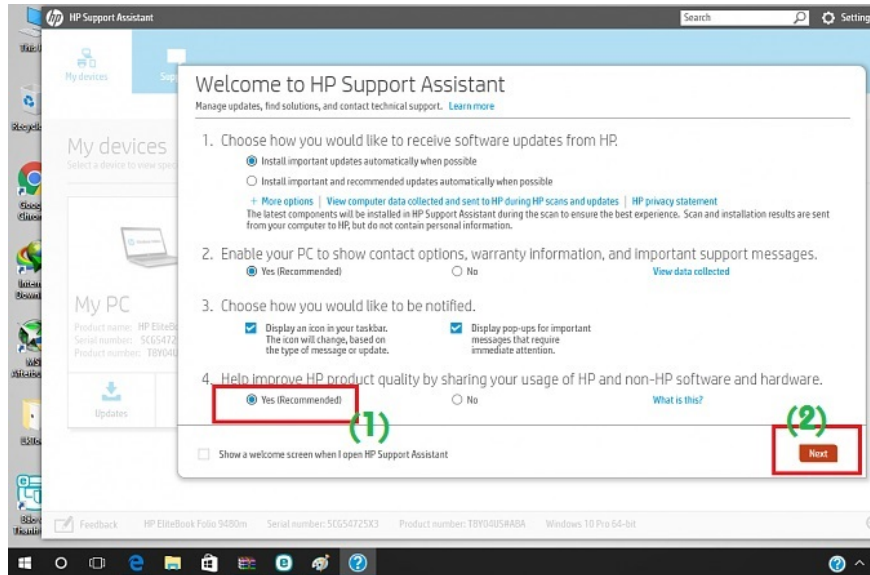
Start using HP Support Assistant

<p>How do I open HP Support Assistant? Click on the ? icon in your system tray.</p> 	<p>How do I get HP Support Assistant? If it's not on your PC, click the button below to download and install.</p> 
--	---

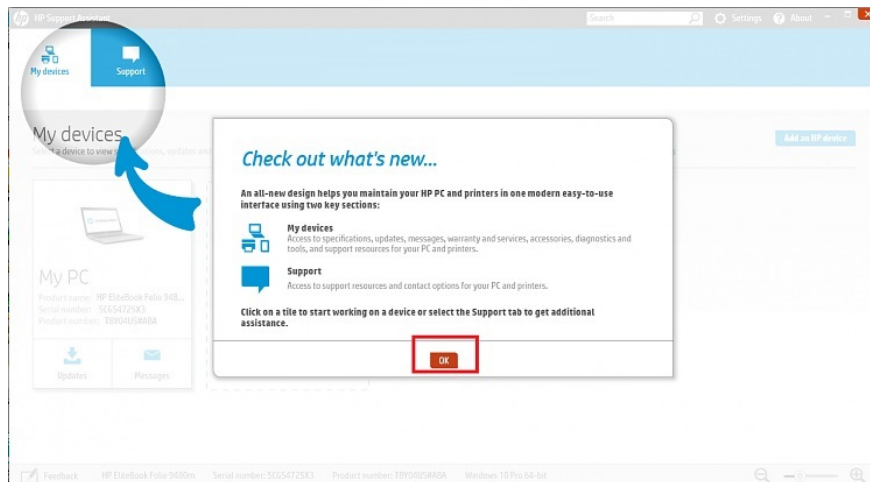
+ Step 3: After the download is complete, install it on your computer => then right-click the icon of the software HP Support Assistant => select Run as administrator to run it with administrator rights.

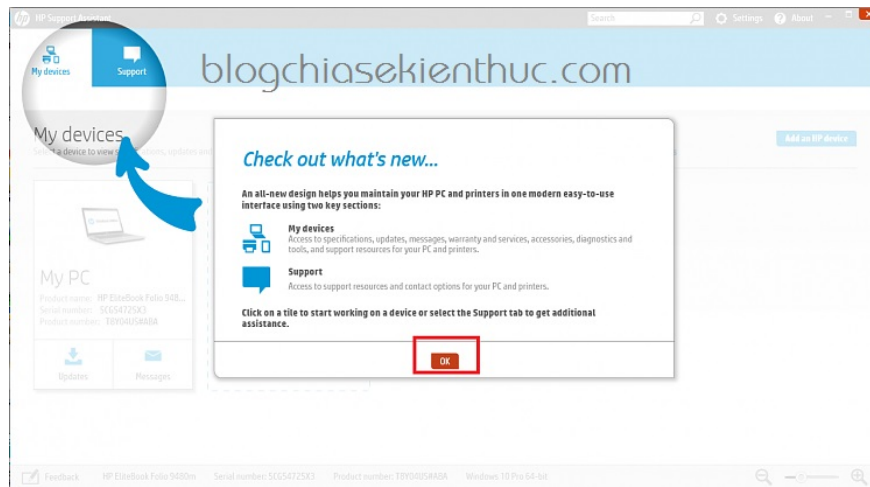


+ Step 4: A dialog box appears, please check Yes option in Help improve HP product quality by sharing your usage of HP... => then click Next.

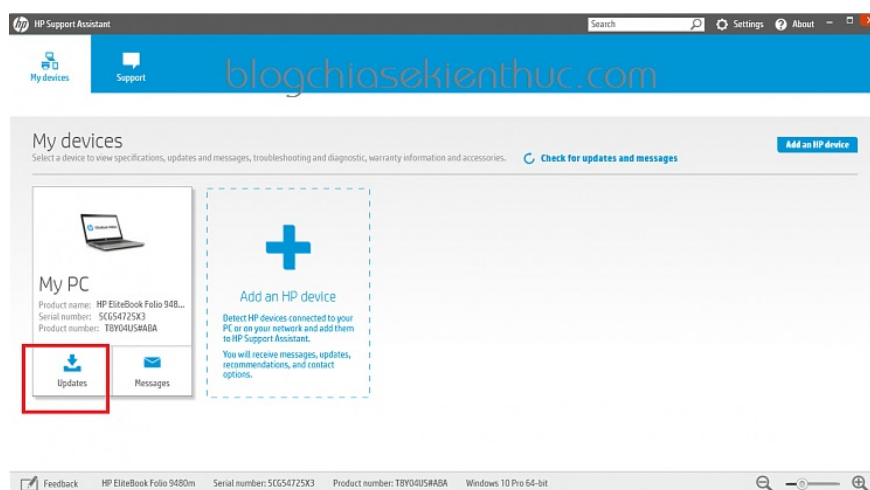
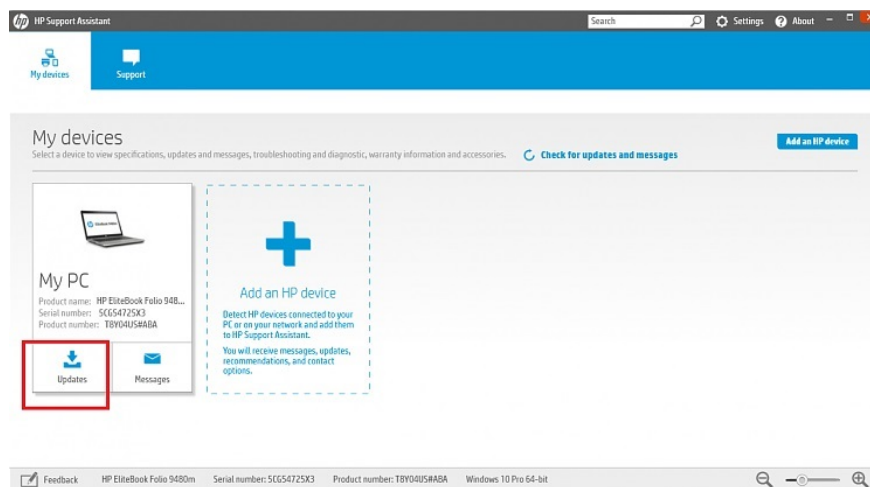


Click OK to agree.

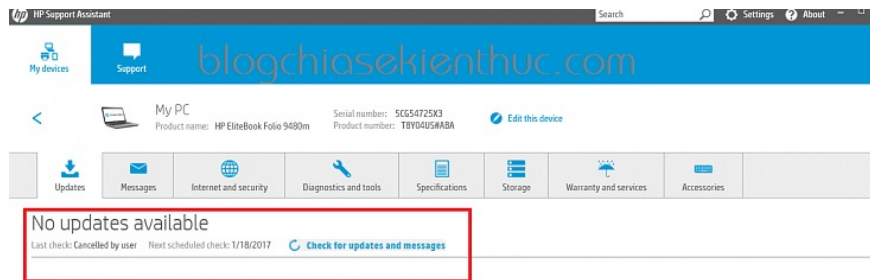
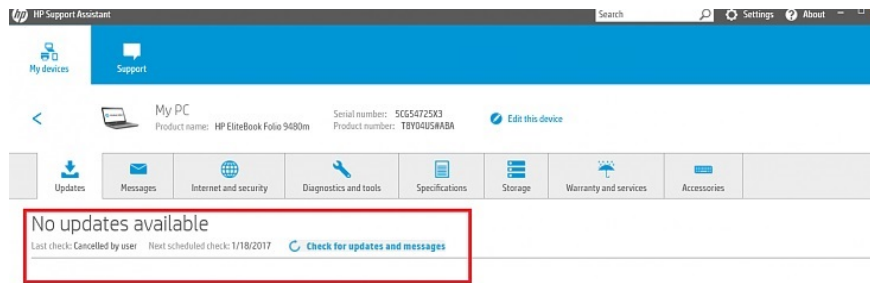




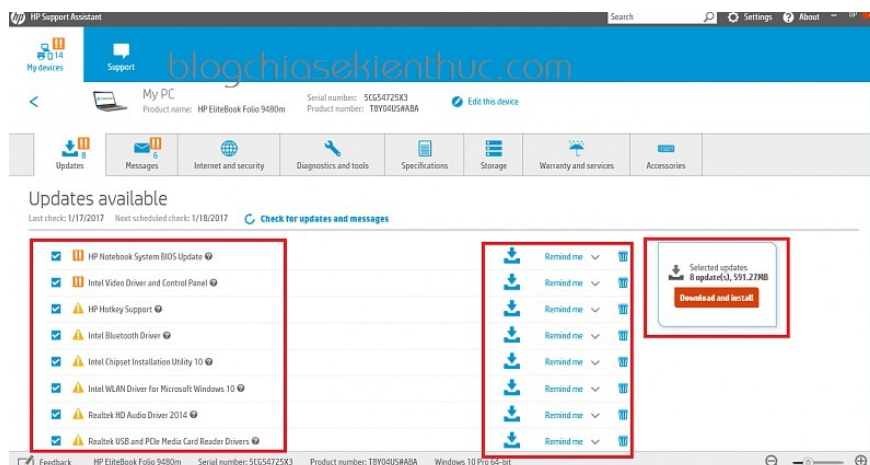
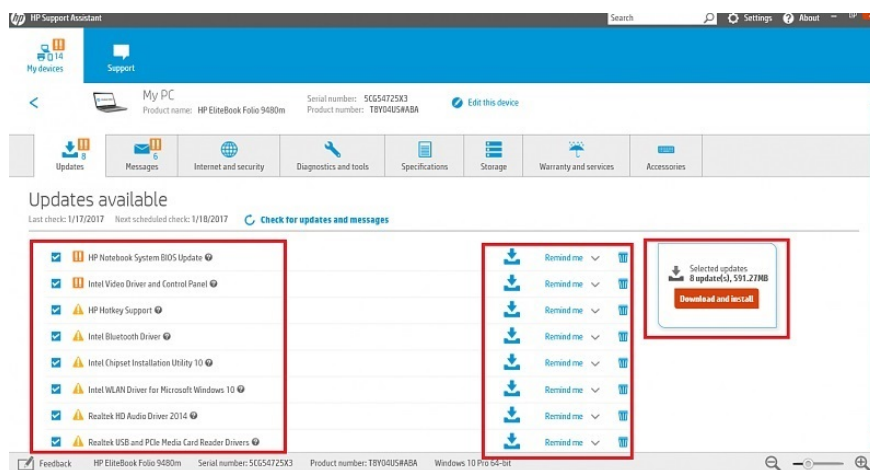
+ Step 5: The My devices section will display some information on your computer. Click the Updates section to go to the driver section.



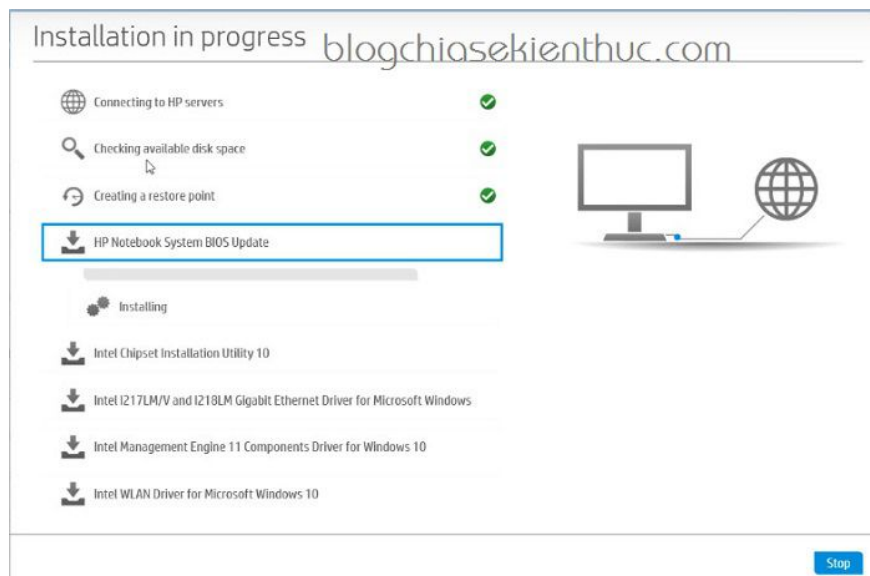
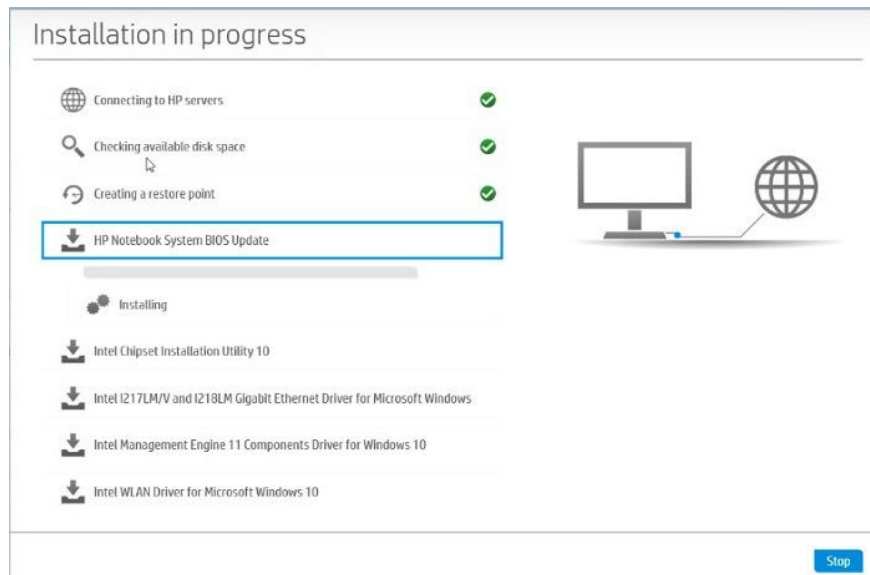
+ Step 6: On the Update tab, click on Check for updates and messages as shown below.



+ Step 7: Here you check the drivers that you want to upgrade and install => then click Download and Install to the tool to upgrade the old drivers on the computer and install more missing drivers. .

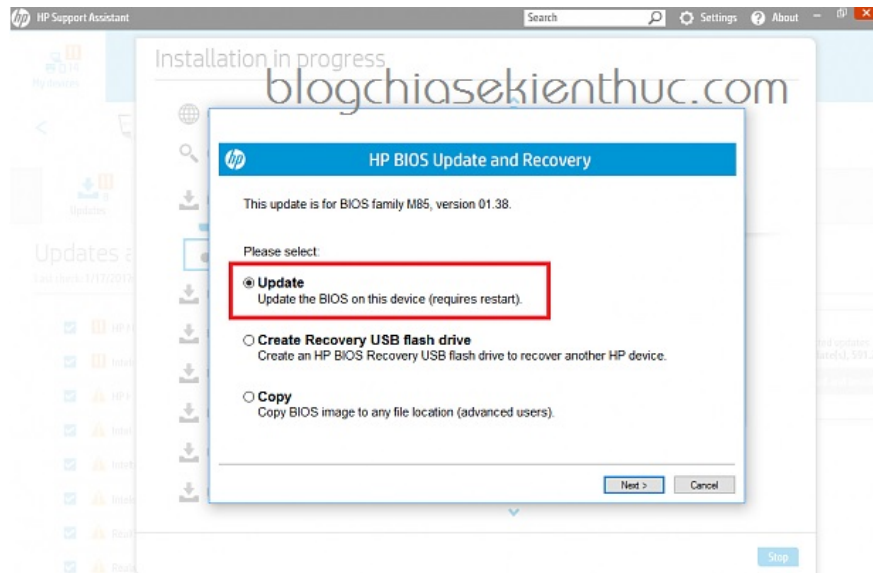


+ Step 8: Now the software will connect to the HP Server to check the necessary information on your computer before it downloads and installs.



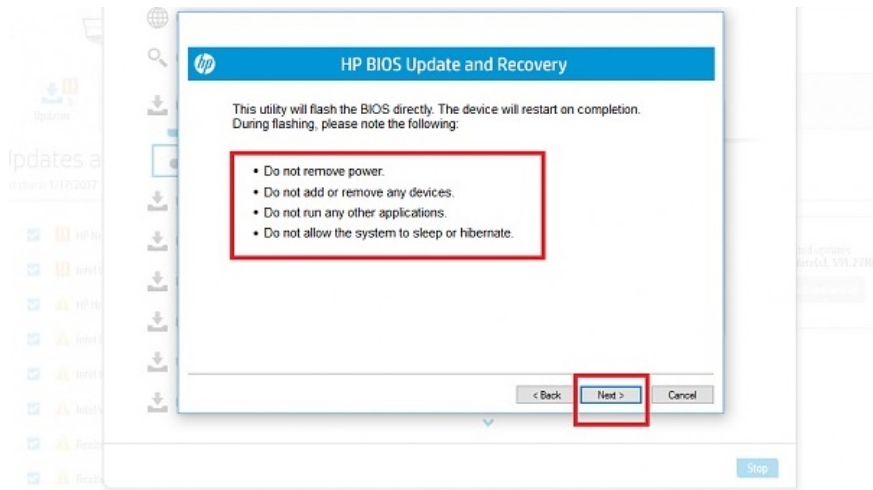
+ Step 9: Go to this Update BIOS, the tool will give you a warning. Because updating BIOS is also relatively dangerous if it fails.

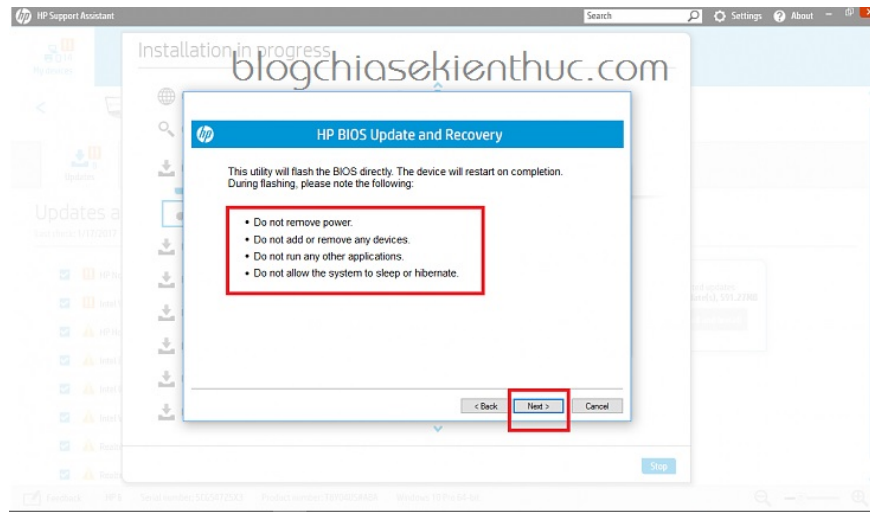
Note: Please insert the battery, plug in the computer charger during the BIOS Update process, while installing it, the power is shut down in the middle of it.



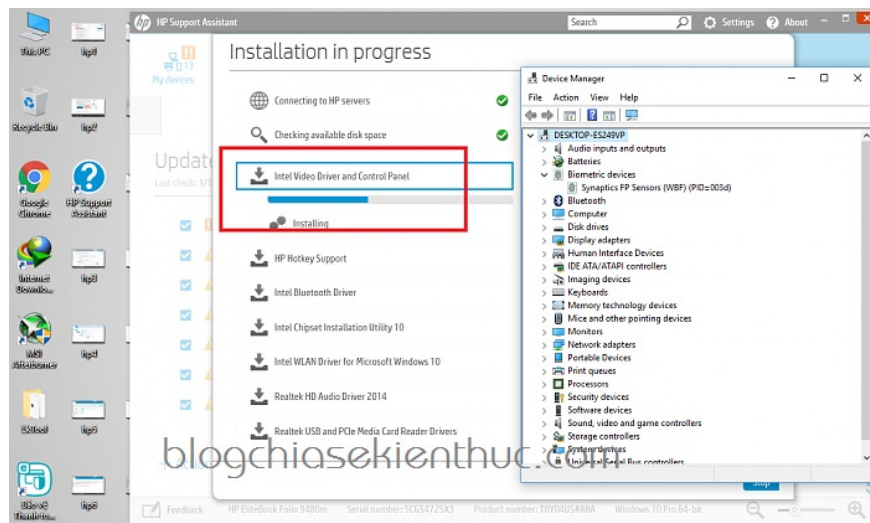
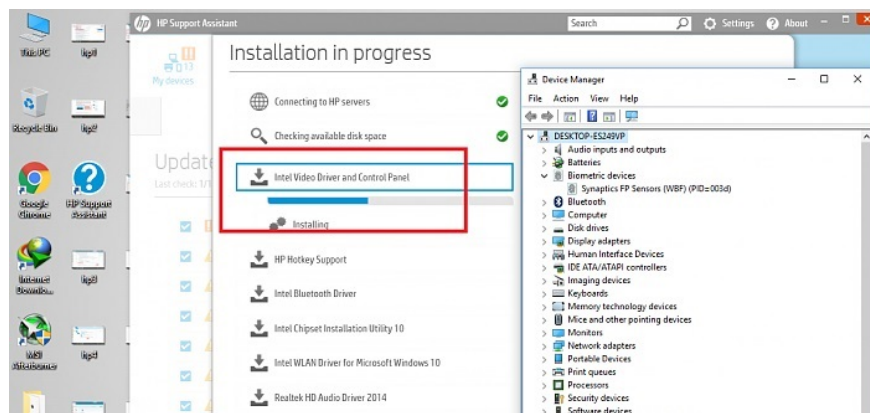
Here are some HP warnings before you decide to upgrade the BIOS to the latest version. Something like:

1. Do not remove power: Please insert the battery and plug the charger into the computer before you perform the BIOS upgrade
2. Do not add or remove any devices: Do not add or remove any devices.
3. Do not run any other applications: Please turn off all running applications before upgrading.
4. Do not allow the system to Sleep or Hibernate: Do not allow the computer to sleep (Sleep) or hibernate (Hibernate) during the upgrade process.





+ Step 10: Okay, after the Update is successful, please restart your computer and wait for the BIOS update to be successful and then continue the work it was doing badly.



Check global warranty.

The screenshot displays the HP Support Assistant application window. At the top, there is a search bar and navigation icons for 'My devices' and 'Support'. Below this, the 'My PC' section shows the device name 'HP EliteBook Folio 9480m', serial number '5CG54725X3', and product number 'TBV04U5#ABA'. A navigation bar contains icons for Updates, Messages, Internet and security, Diagnostics and tools, Specifications, Storage, Warranty and services (highlighted with a red box), and Accessories. The 'Warranty and services' section shows 'Warranty remaining: 2 Years, 10 Months' (highlighted with a red box). Below this, it lists 'Standard warranty end date: 12/24/2016' and 'Care Pack end date: 11/22/2019'. A disclaimer section follows, explaining that the warranty is based on the purchase date and providing links for disputing the warranty and registering for an HP Care Pack. The bottom status bar shows 'Feedback', 'HP EliteBook Folio 9480m', 'Serial number: 5CG54725X3', 'Product number: TBV04U5#ABA', and 'Windows 10 Pro 64-bit'.

4. Epilogue

So I have shared with you a great trick to install the standard Driver for HP computers already. I think this article will be extremely useful for you who are using that HP computer series.

Hope the article will be useful to you, wish you success!

You finished reading the article "**How to Install Driver for HP Laptop with HP Support Assitant**" edited by the [TipsMake](#) team. We hope this article has provided you with many useful tech tips and tricks. You can search for similar articles on tips and guides. Thank you for reading and for following us regularly.