

# How to install Canon 2900 printer, Canon 2900 Driver on Windows 7/10/11

Confidently install the Canon 2900 printer and Canon 2900 Driver on your Windows 7/10/11 computer with full support and instructions from Taimienphi. You just need to download the Canon 2900 Driver, follow the simple steps below and the printer will be ready to serve you in your daily printing work.

**The Canon 2900 printer** is widely used in offices and households today. The operations to install Canon printers on computers with different operating systems are relatively simple. Users only need to connect the printer to the computer after installing the Canon 2900 Driver, ready for printing.

## System requirements:

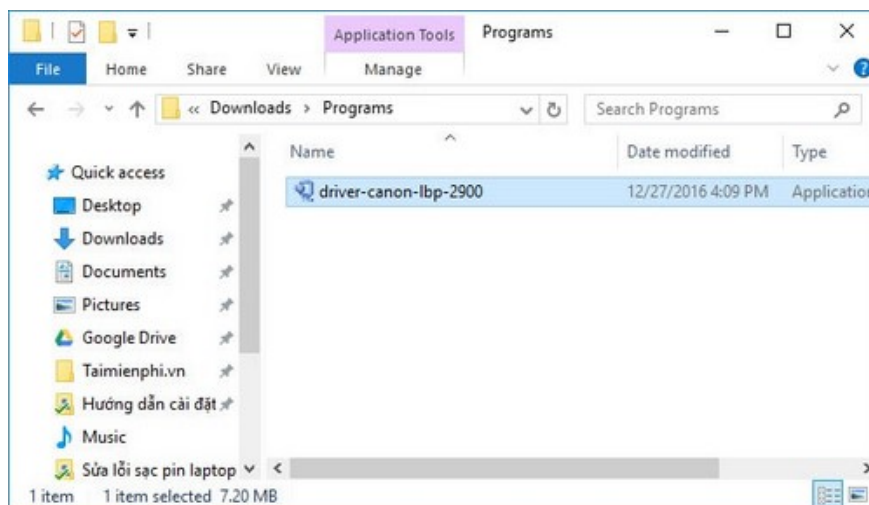
1. Computer running Windows XP/Vista/7/8/8.1/10/11
2. Canon LBT 2900 printer
3. Connection wire between printer and computer

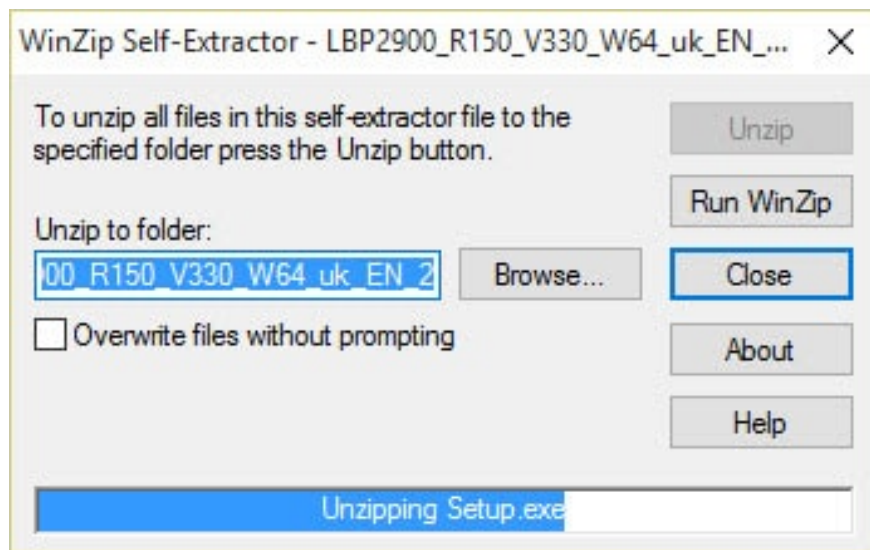
## *Instructions for downloading and installing Canon 2900 printer on your computer*

### *Step 1: Download Canon 2900 Driver*

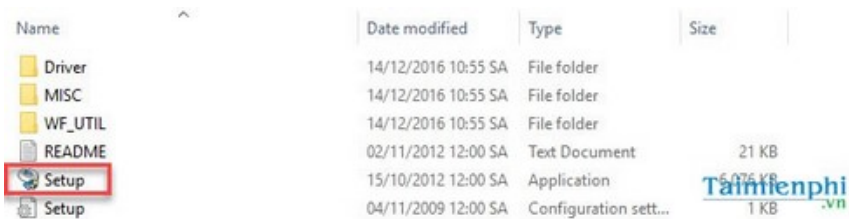
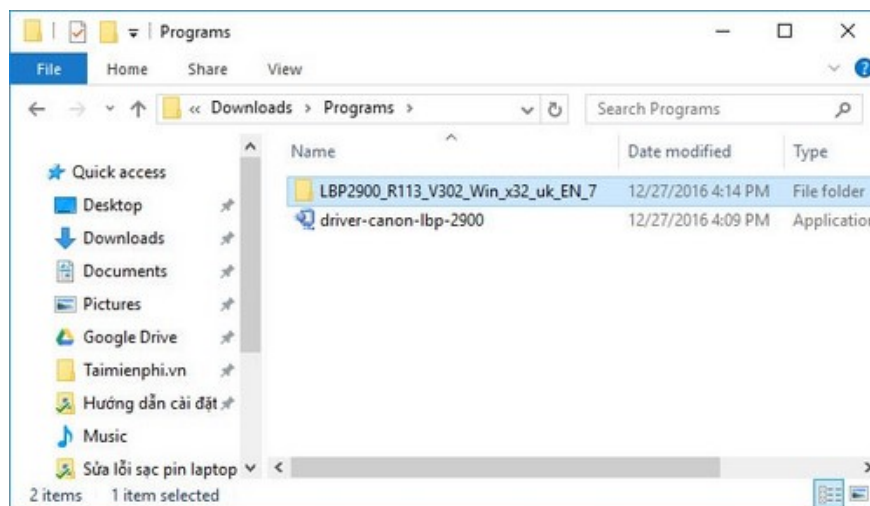
- Additionally, you can find and install driver versions suitable for your operating system at: <http://support-vn.canon-asia.com/?personal&lang=VN>

### *Step 2: Run the downloaded installation file*

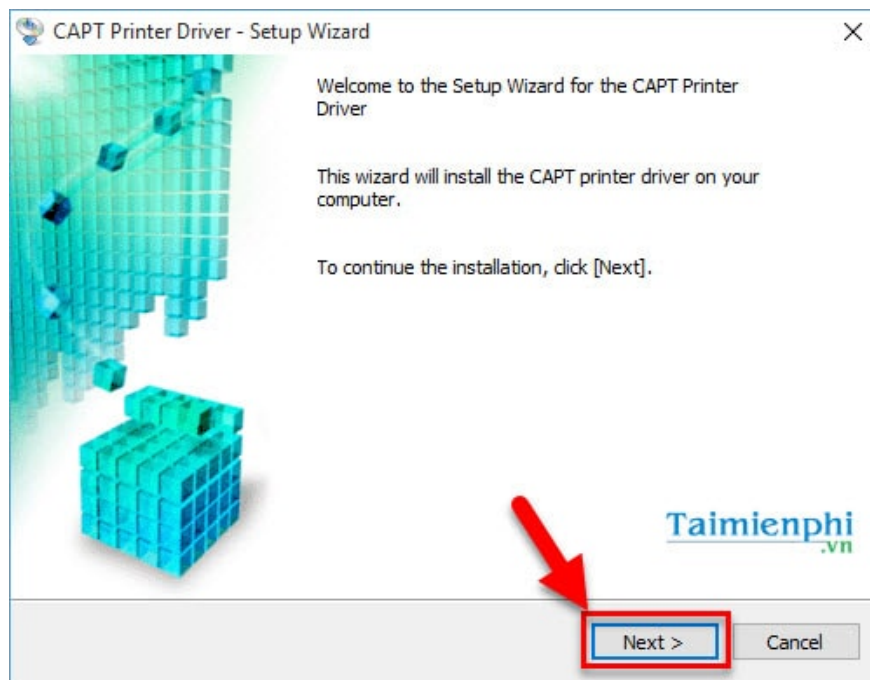




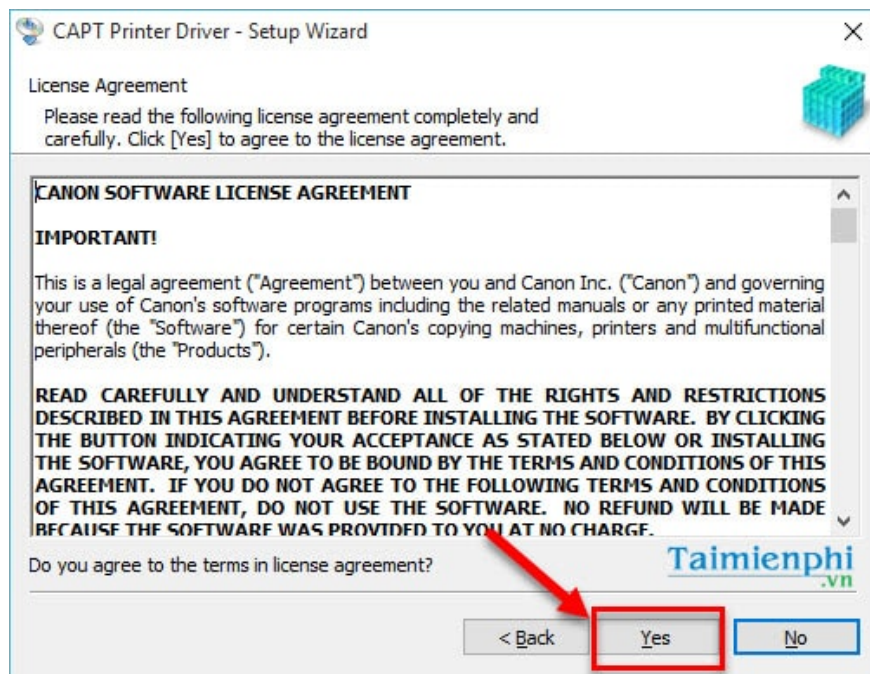
Step 3: The installation file will automatically unzip to another folder. Open that folder, then run the **Setup.exe** file



Step 4: Click **Next** to start the installation process



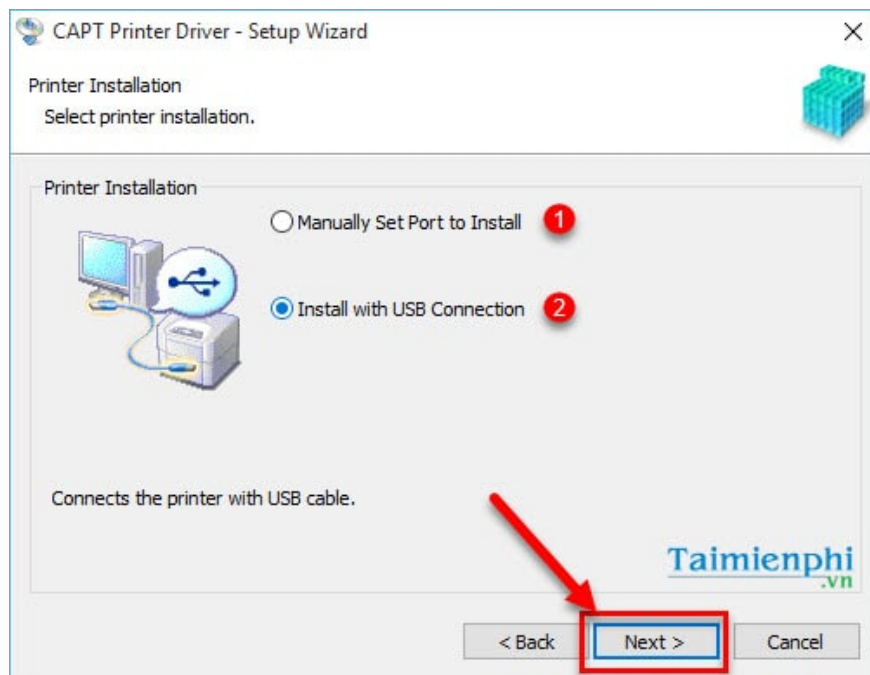
Step 5: Click **Yes** to agree to the terms of use and continue the installation process



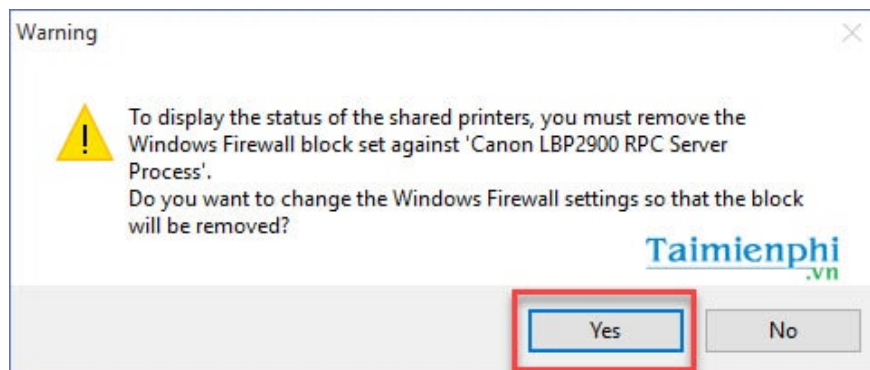
Step 6: This installation step will have 2 installation options

- (1): Install via network port according to a custom method
- (2): Install via direct connection.

- At this step, if you have prepared the printer and connection cable, you should choose the second installation method which is to install via direct connection ( **Install with USB Connection** ). Click **Next** to continue the installation

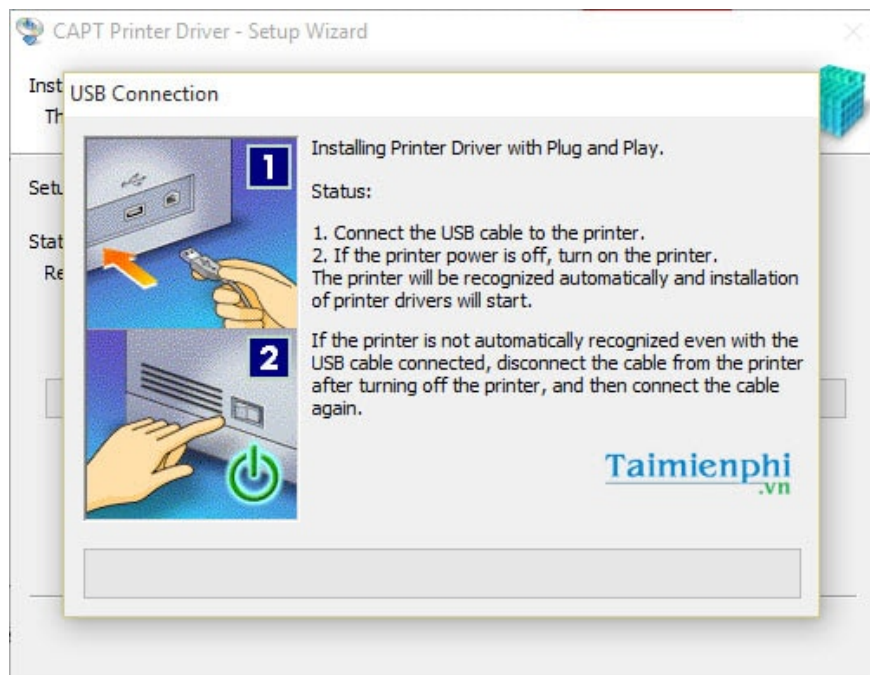


*Step 7:* Warning to disconnect the firewall for the printer, click **Yes** to continue

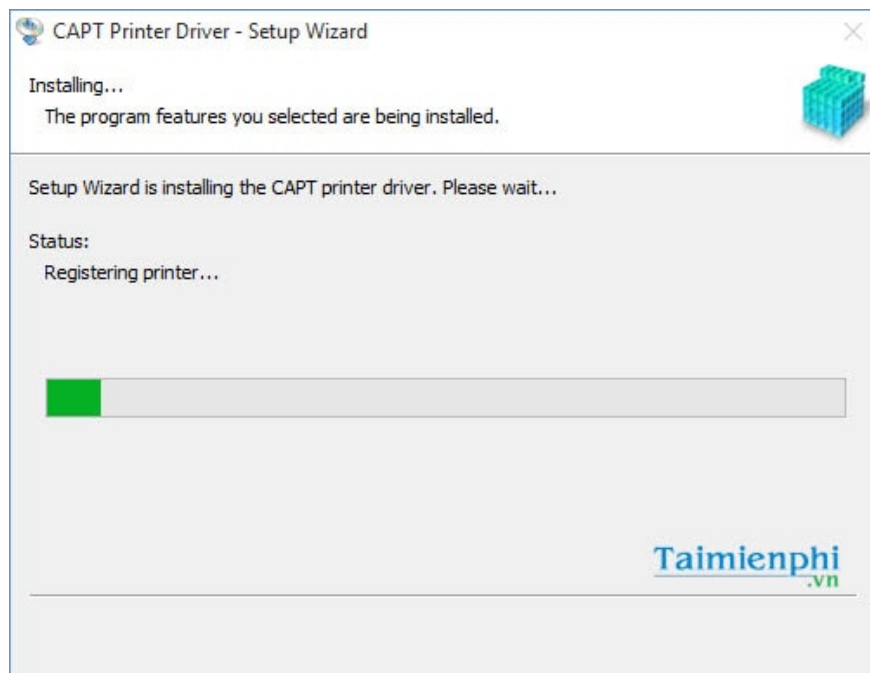


*Step 8:* The process of connecting the printer and computer via USB. You use the cable to connect the computer and printer so that the driver can check compatibility and begin installation.

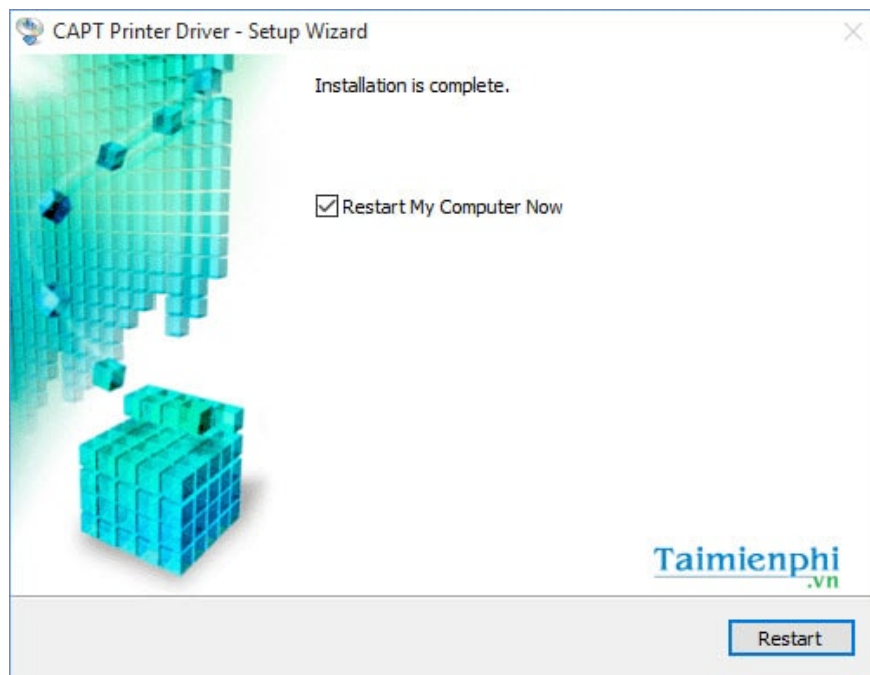
- **Note:** If the printer does not automatically recognize the connection even when the cable is plugged in, please unplug the cable from the printer, then turn off the printer, reconnect the connection cable and restart the process. If it still doesn't work, check the connection cable again.



*Step 9:* After successful connection, the Canon 2900 driver will begin installing on the computer.



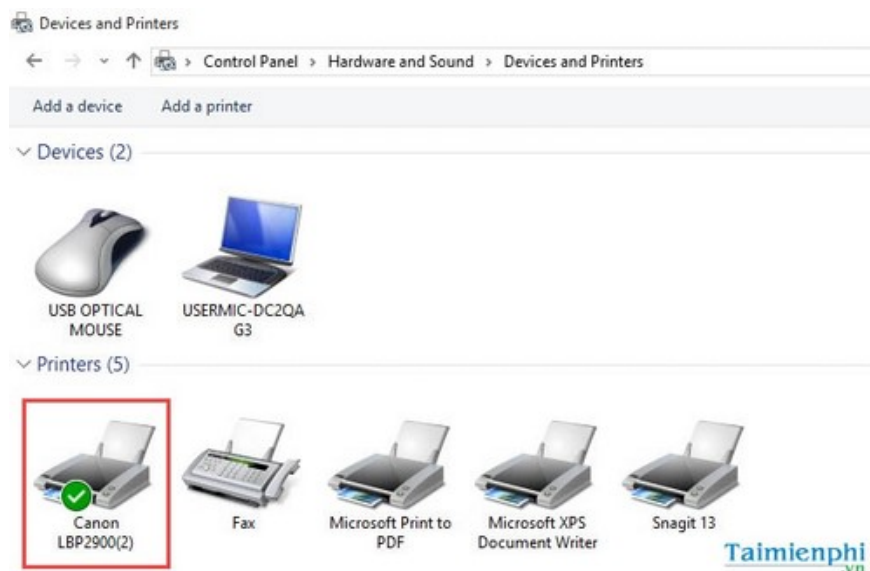
*Step 10:* The installation process is complete. Click **Restart** to restart the computer.



*Step 11:* After restarting the computer. Keep your computer connected to the printer, then check to see if the printer has received the driver.

- Go to **Control Panel Hardware and Sound Devices and Printers**

In the printer list, if you see the Canon 2900 LBP printer icon with a blue tick, your computer has successfully installed the Canon 2900 LBP driver.



So you have completed installing the Canon 2900 64bit Driver on your computer. For other types of printers, the installation method will be similar . After you have installed the printer, you can share the printer with other computers on the LAN to use together to help print Word documents more conveniently.

You finished reading the article "**How to install Canon 2900 printer, Canon 2900 Driver on Windows 7/10/11**" edited by the [TipsMake](#) team. We hope this article has provided you with many useful tech tips and tricks. You can search for similar articles on tips and guides. Thank you for reading and for following us regularly.

---