

# How to install Canon 2900 drivers on Windows 11/10/7 computers

Installing the Canon 2900 driver on your computer helps the printer operate stably and receive print commands quickly. Installing the correct driver compatible with your operating system will ensure print quality and minimize connection errors during use.

**The Canon 2900 printer** is widely used in offices and households today. Readers only need to download the correct driver version and follow a few simple steps as instructed by Taimienphi to use the printer effectively.



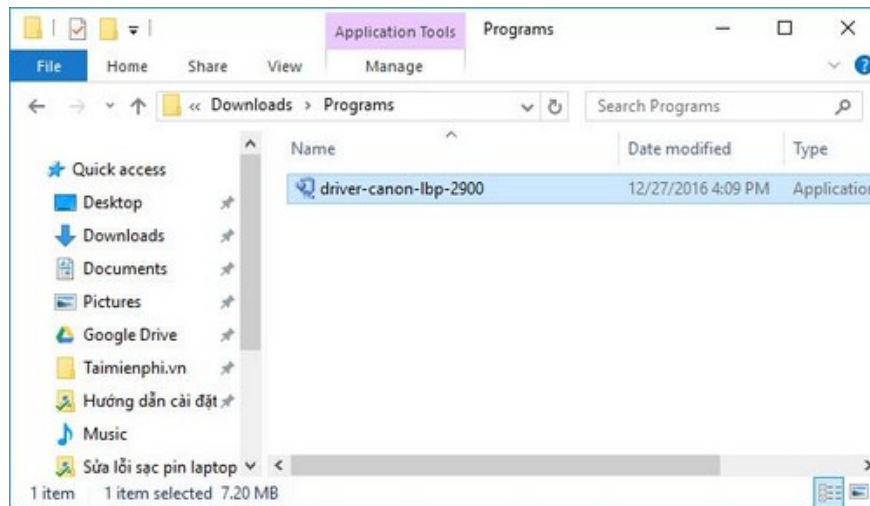
## System requirements

1. Computers running Windows XP/Vista/7/8/8.1/10/11
2. Canon LBT 2900 printer
3. Cable connecting the printer and the computer

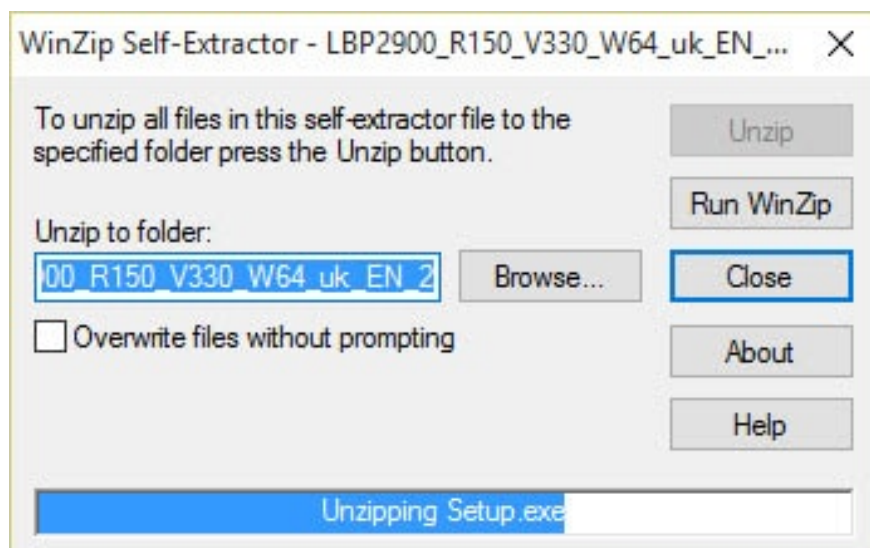
## Instructions for installing the Canon 2900 printer on a computer.

**Step 1:** Download the Canon 2900 driver installer [here](#).

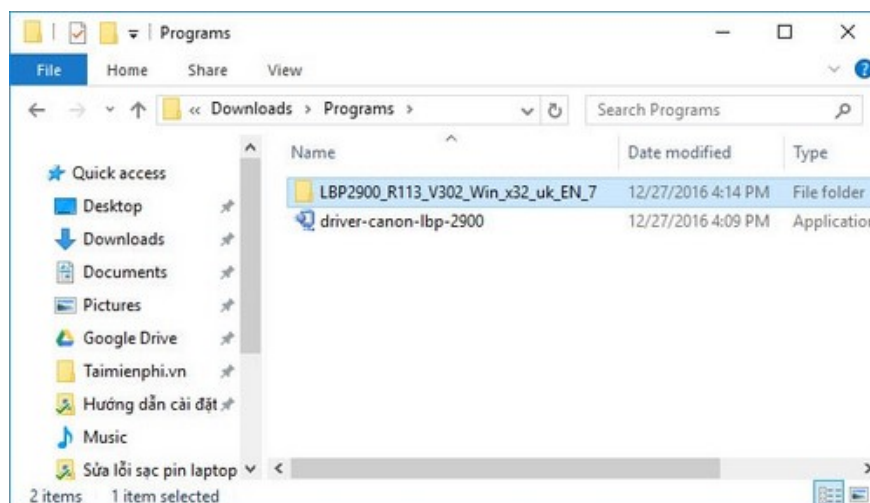
**Step 2:** After downloading, click directly to open the file.



- Click on **Run Winzip**



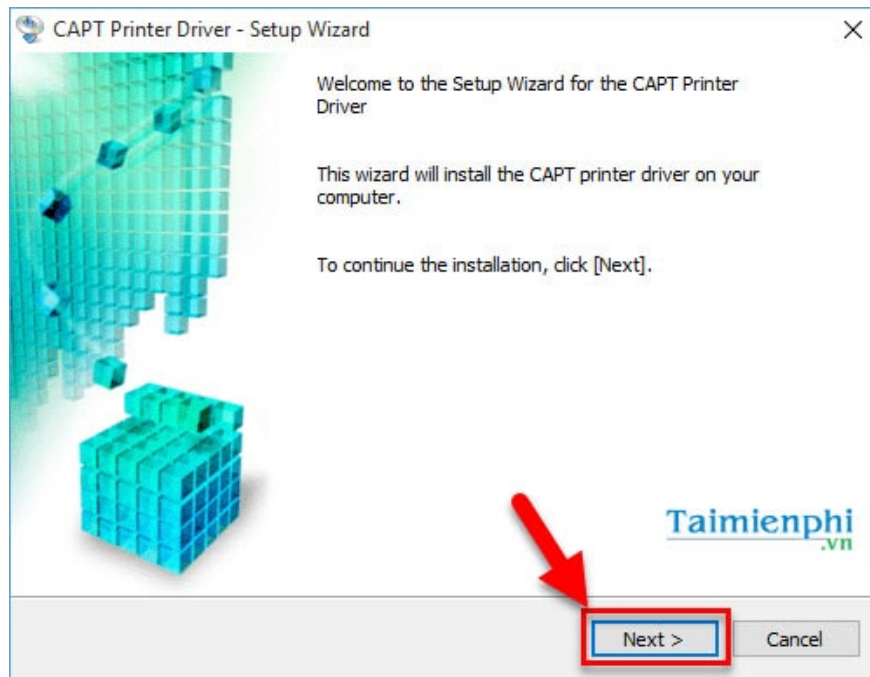
**Step 3:** The file will automatically extract to another folder; go to that folder.



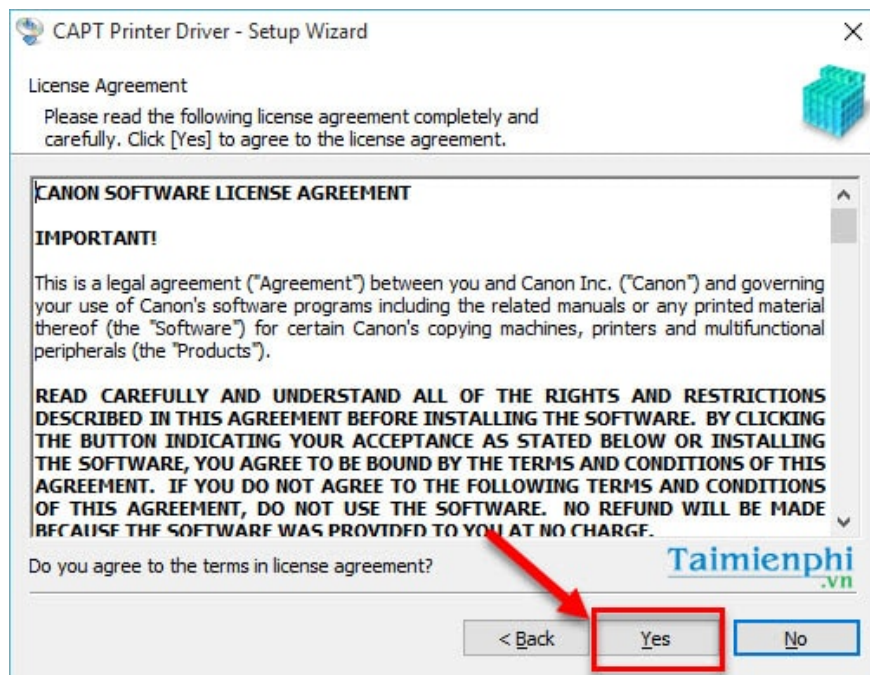
- Select the **Setup.exe** file

Name	Date modified	Type	Size
Driver	14/12/2016 10:55 SA	File folder	
MISC	14/12/2016 10:55 SA	File folder	
WF_UTIL	14/12/2016 10:55 SA	File folder	
README	02/11/2012 12:00 SA	Text Document	21 KB
Setup	15/10/2012 12:00 SA	Application	5,076 KB
Setup	04/11/2009 12:00 SA	Configuration sett...	1 KB

**Step 4:** Click **Next** to begin the installation process.



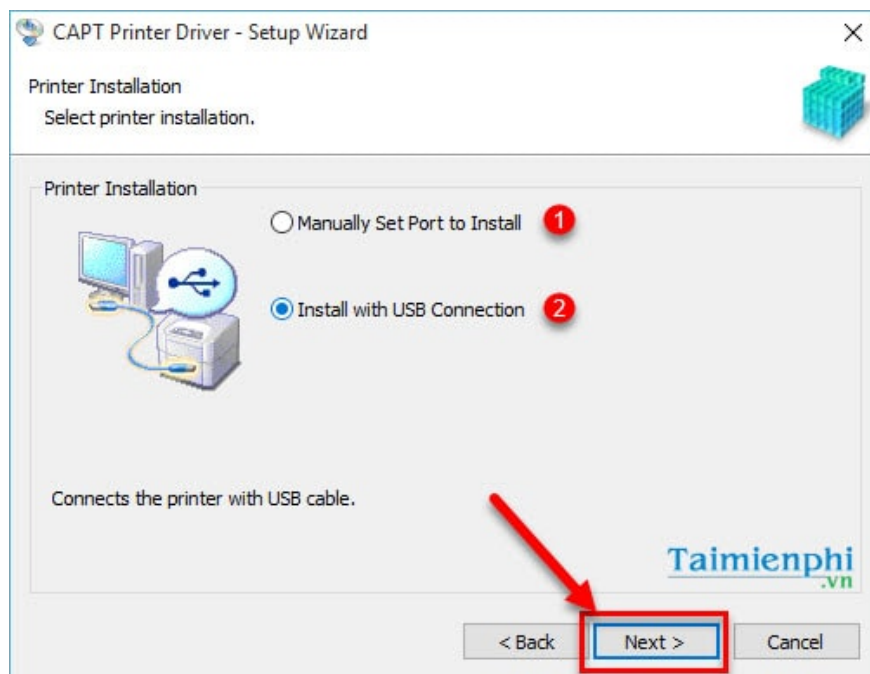
**Step 5:** Click **Yes** to agree to the terms of use and continue the installation process.



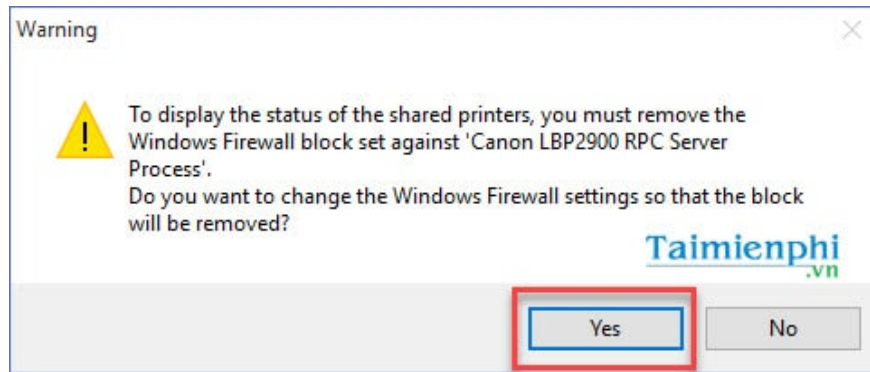
**Step 6:** You need to choose one of the following two methods

- (1) **Manually Set Port to Install:** Install via network port using a custom method
- (2) **Install with USB Connection:** Install via direct wired connection.

Here, if you are connecting the printer to your computer via cable, select **the second installation method (Install with USB Connection)** and click **Next** to continue.

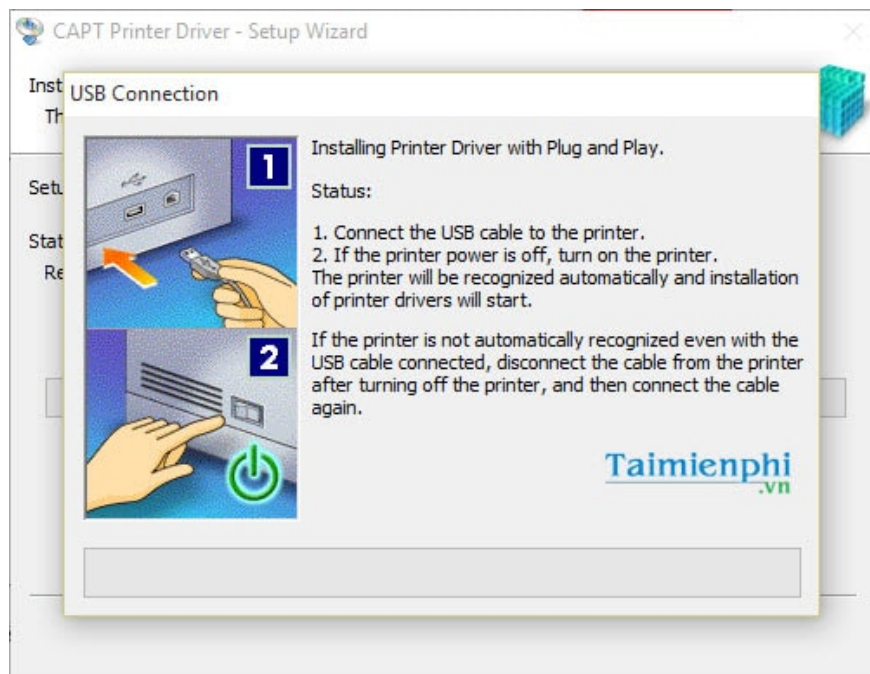


**Step 7:** A firewall warning will appear for the printer; click **Yes** to continue.

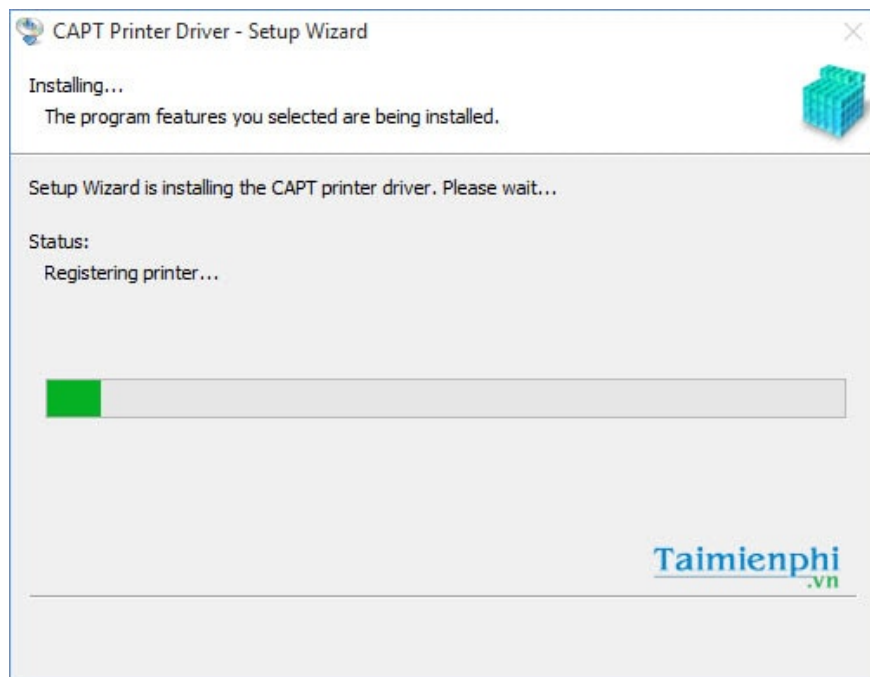


**Step 8:** The process of establishing a connection between the printer and the computer via USB will begin. Use the cable to connect the computer and printer so the driver can check compatibility and start the installation.

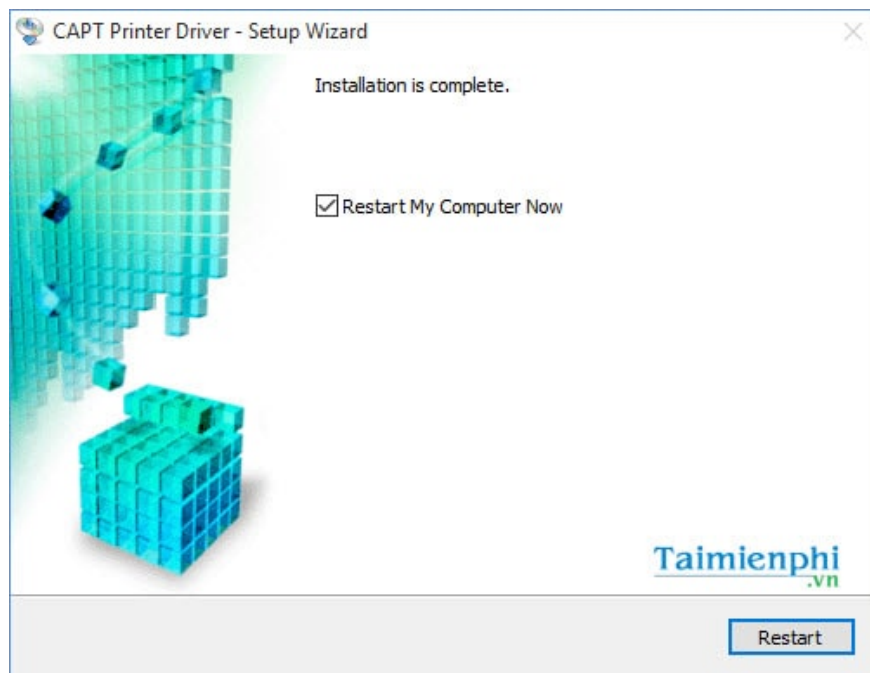
- **Note:** If the printer does not automatically recognize the connection even after plugging in the cable, please unplug the cable from the printer, then turn off the printer, plug the cable back in, and restart the process. If it still doesn't work, check the connection cable.



**Step 9:** After a successful connection, the Canon 2900 driver will begin installing on your computer.



**Step 10:** The installation process is complete. Click **Restart** to restart your computer.

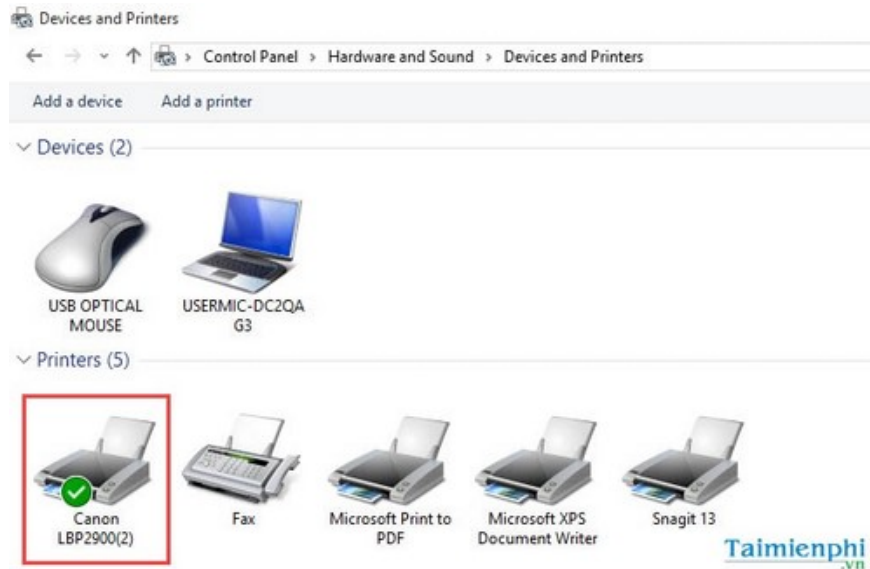


**Step 11:** After restarting your computer, keep the computer connected to the printer, then check if the printer has recognized the driver.

- Go to **Control Panel > Hardware and Sound > Devices and Printers**

- In the list of printers, if you see the Canon 2900 LBP printer icon with a green checkmark, it means the Canon 2900 LBP driver has been successfully installed on your computer.

- To print, simply **open the file** => press **Ctrl+P** => select **Canon 2900 LBP** under **the Target Printer** and **print** as usual.



So, you have now completed installing the Canon 2900 64-bit driver on your computer. The installation process is similar for other printer models . After installing the printer, you can share it with other computers on your LAN network for convenient printing of Word documents.

You finished reading the article "**How to install Canon 2900 drivers on Windows 11/10/7 computers**" edited by the [TipsMake](#) team. We hope this article has provided you with many useful tech tips and tricks. You can search for similar articles on tips and guides. Thank you for reading and for following us regularly.