

How to install Bluetooth for laptops

How to install Bluetooth for laptops. Most laptops on the market today are equipped with Bluetooth connectivity to help us easily connect Bluetooth-enabled devices such as headsets, speakers, keyboards, mice ... However, if your computer uses the operating system

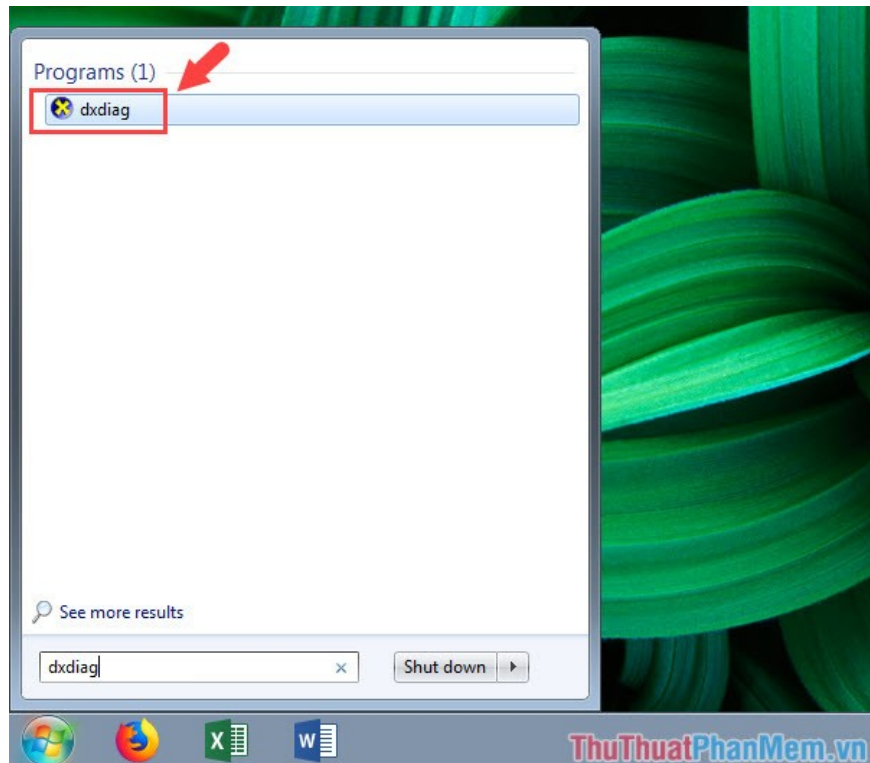
Most laptops on the market today are equipped with Bluetooth connectivity to help us easily connect Bluetooth-enabled devices such as headsets, speakers, keyboards, mice . However, if your computer uses To use the operating system from Windows 10 or below, we must install the driver for Bluetooth manually because the driver update feature is only available on Windows 10.



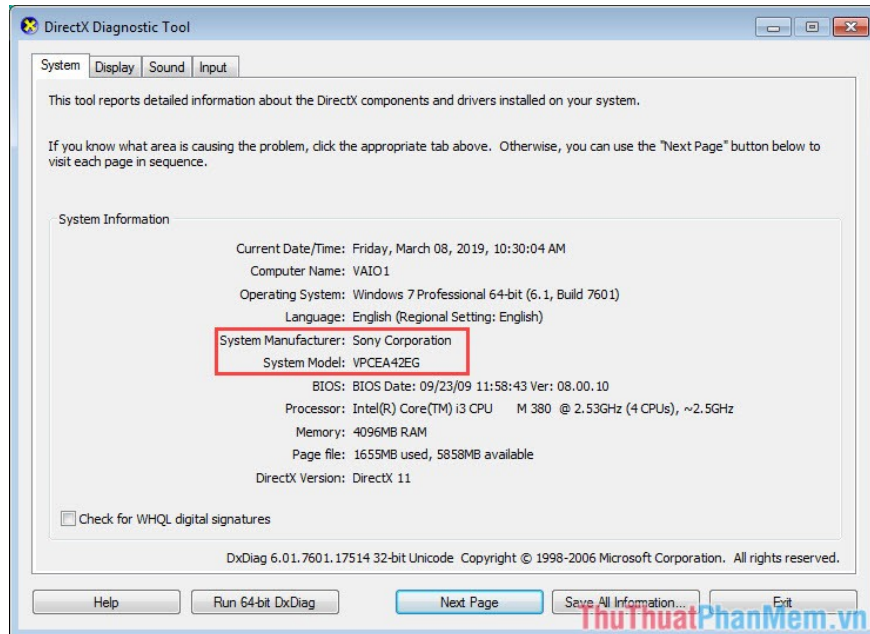
Method 1: Install bluetooth manually with the Bluetooth driver on the device's homepage

1. Determine the brand name and model name of the laptop

First, you need to check your laptop brand and model. To check Laptop model, go to **Start** and type keyword *dxdiag* => select the first result.



Notice the two lines are **System Manufacturer** (Firm) and **System Model** (Product model name). Then you go to Google search the home page of the product and search for drivers compatible with your windows version.



The driver download page of some major laptop manufacturers can be found below:

Sony Vaio: <https://www.sony.com.vn/electronics/support/personal-computers>

Dell: <https://www.dell.com/support/home/vn/en/vnbsd1?app=drivers>

Asus: <https://www.asus.com/support/Download-Center/#>

Acer: <https://www.acer.com/ac/en/VN/content/drivers>

MSI: <https://www.msi.com/support/download>

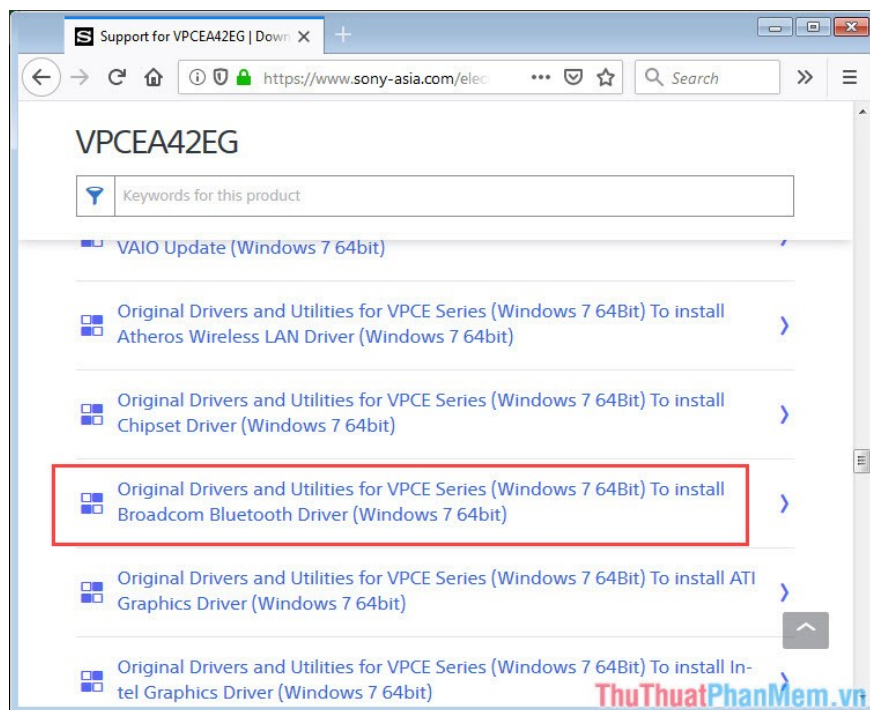
HP: <https://support.hp.com/us-en/drivers/laptops>

Lenovo: <https://support.lenovo.com/en/en/>

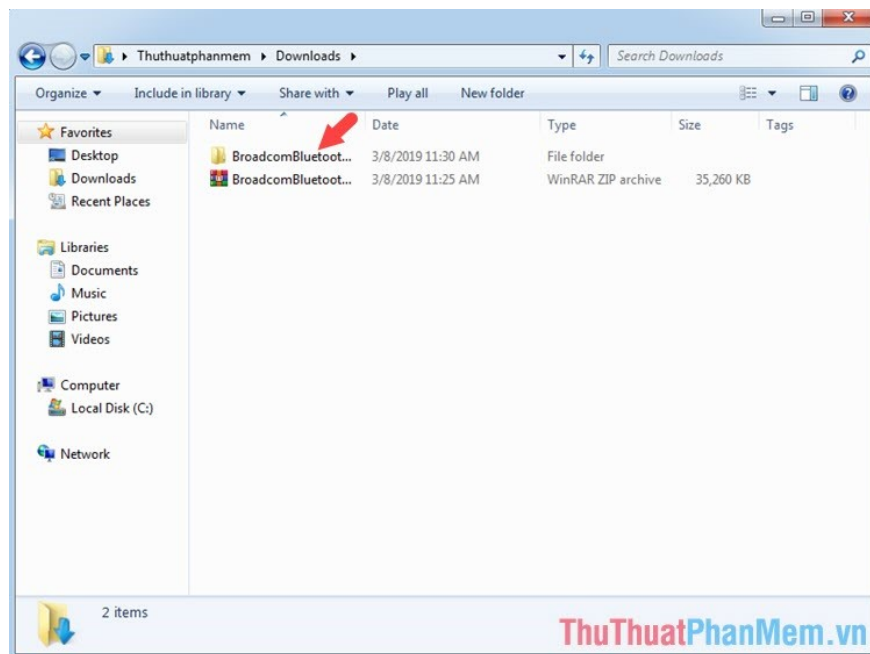
2. Install the driver

Take for example with Sony Vaio Laptop model VPCEA42EG model.

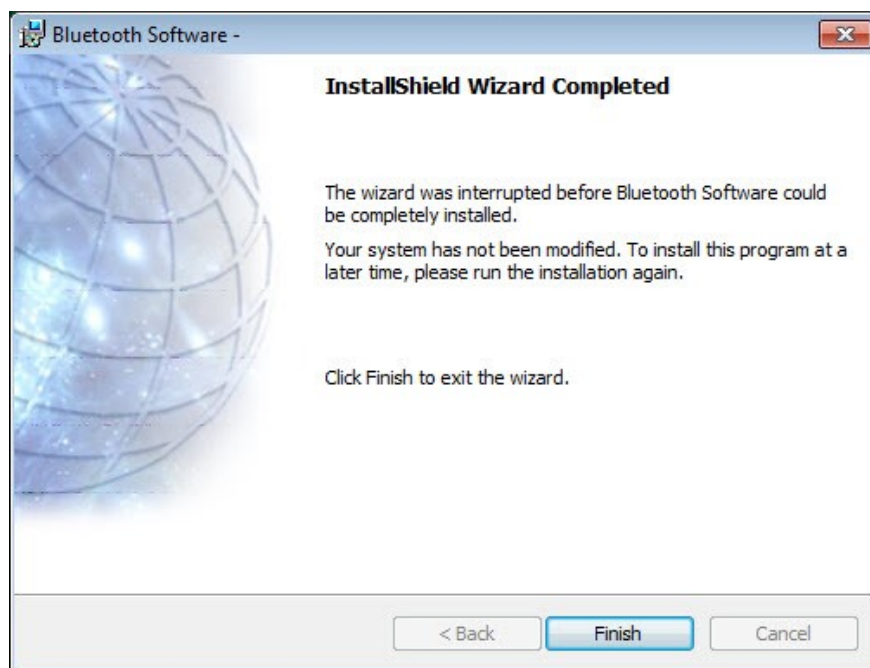
Step 1: First, go to the homepage and download the driver to your computer.



Step 2: After downloading, you need to extract and install.



After installation is completed with the message **InstallShield Wizard Completed** is successful.

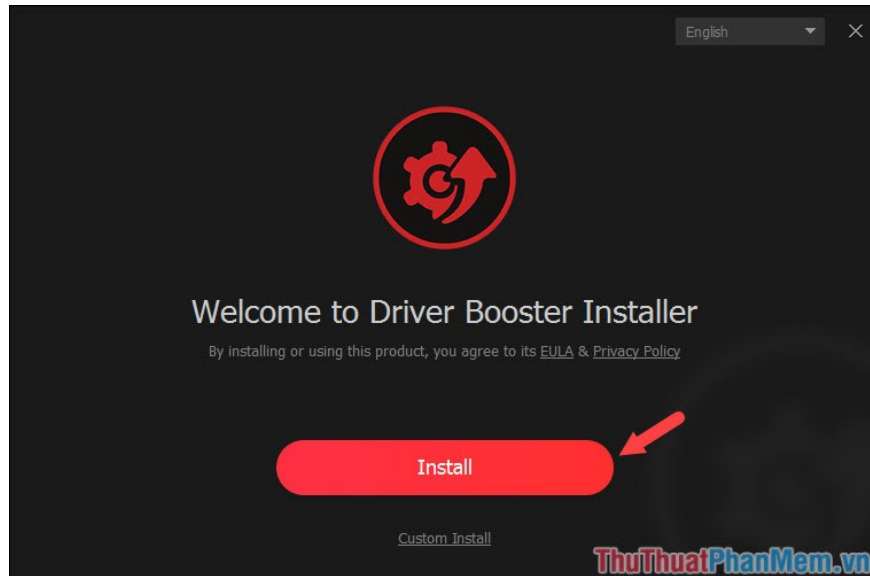


During installation, you should notice under the system tray that says **Installing device** . and when clicking on the message that shows device information with the status **Ready to use** is finished.

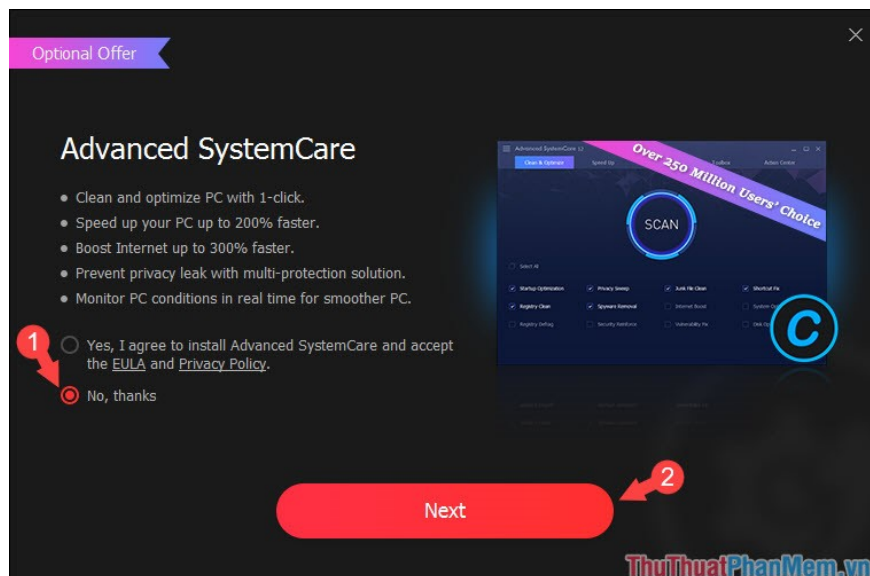
Method 2: Install bluetooth driver automatically with Driver Booster

Download **Driver Booster** here: <https://www.iobit.com/en/driver-booster.php>

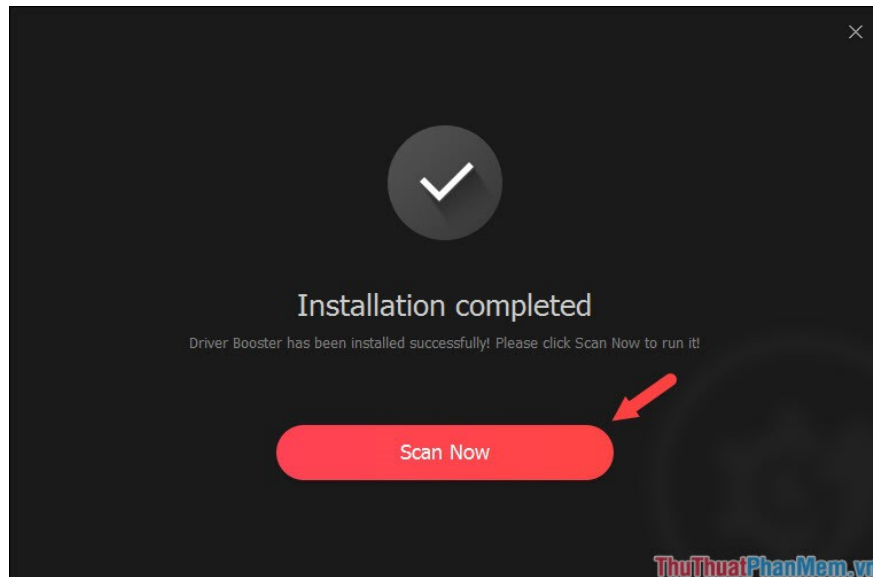
Step 1: After downloading, open **Driver Booster** and install it. Click **Install** to start the installation.



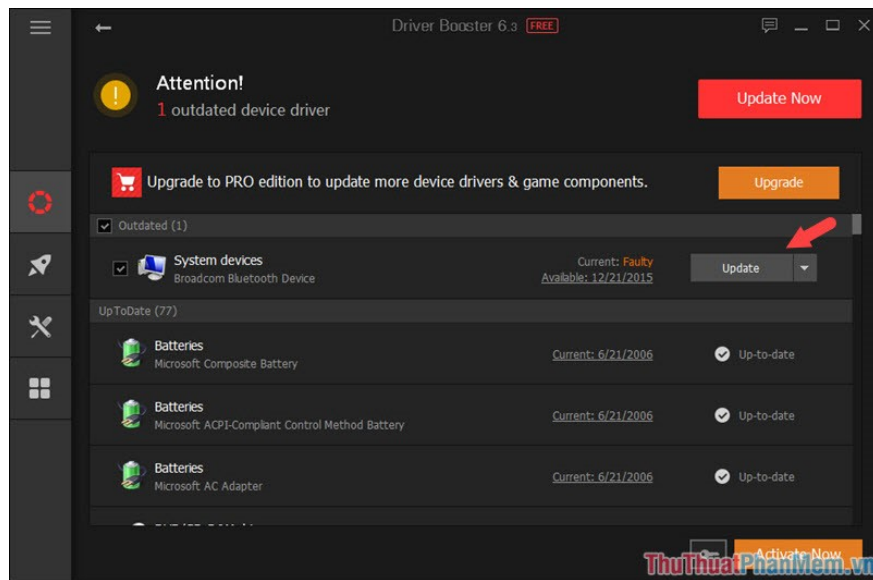
Step 2: Check the **No, thanks** to the software does not automatically install the **Advanced SystemCare** program on your computer. Click **Next** to continue.



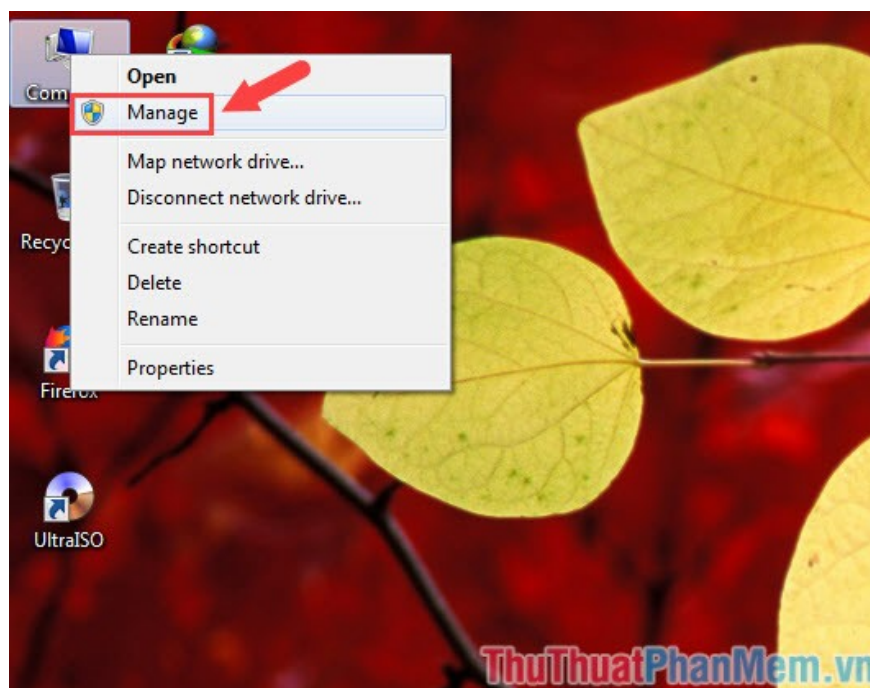
Step 3: After installation is complete, you click **Scan Now** to conduct a full system scan.



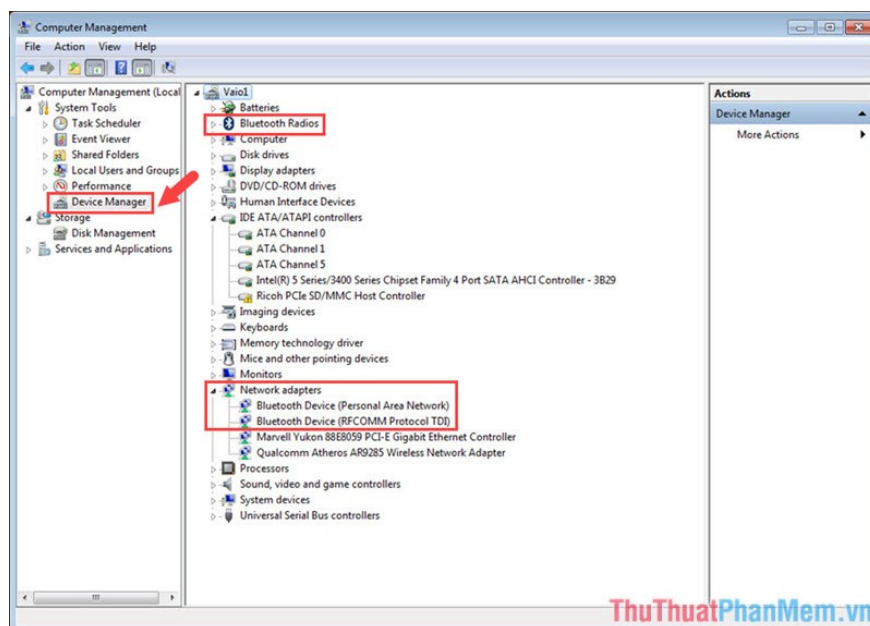
Step 4: After the scan, the software will list outdated drivers, errors and require you to **Update** . You click on **Update** and the installation process begins.



Step 5: After the installation is complete, you can check whether the Bluetooth Driver has been installed in **Device Manager** . Right-click **Computer** and select **Manage** .



Step 6: Select the **Device Manager** tab and notice the two items marked red are **Bluetooth Radios** and **Networks adapters** . If the bluetooth driver shown as shown below is successful.



After this tutorial, hopefully you can check and install Bluetooth for your laptop easily. Good luck!

You finished reading the article "**How to install Bluetooth for laptops**" edited by the [TipsMake](#) team. We hope this article has provided you with many useful tech tips and tricks. You can search for similar articles on tips and guides. Thank you for reading and for following us regularly.