

How to install and remove fonts on Linux

The Linux system has many integrated fonts but you still can't find the font you need. Downloading and installing new fonts is very easy on Linux and we will show you how to do this in the following article.

The Linux system has many integrated fonts but you still can't find the font you need. Downloading and installing new fonts is very easy on Linux and we will show you how to do this in the following article.

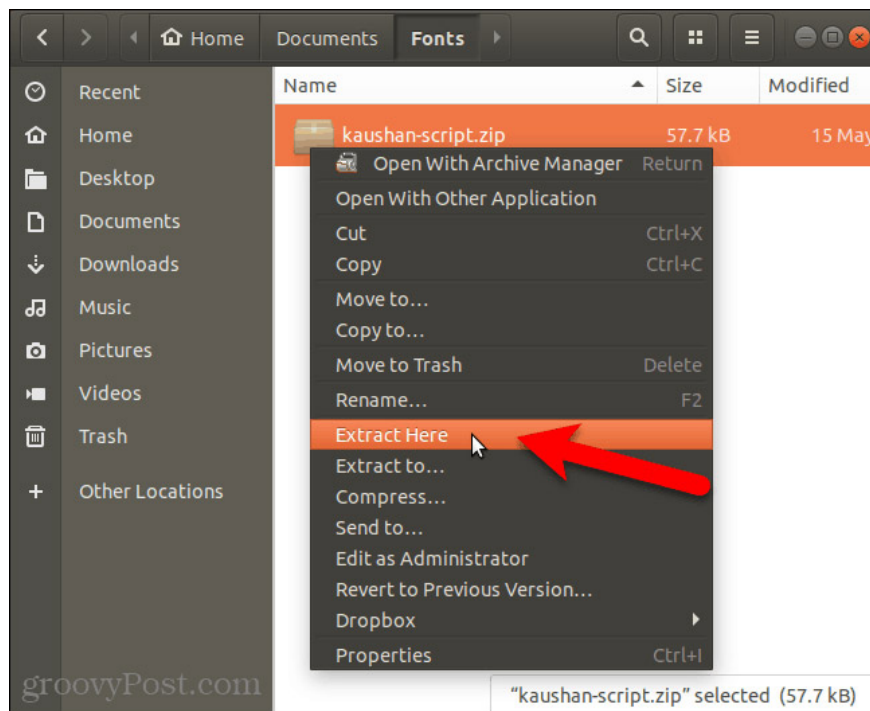
Font management on Linux

The Linux distribution comes with different desktop environments and applications for font management. We will show you how to install fonts on Ubuntu with Font Viewer and how to install Ubuntu's Nautilus fonts manually. Most other Linux distributions have similar tools.

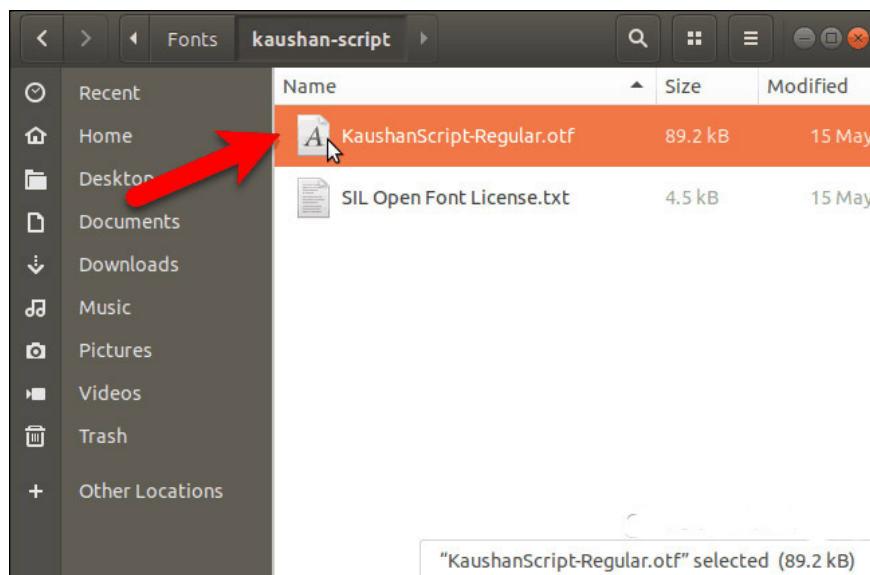
Install fonts on Ubuntu with Font Viewer

Ubuntu comes with **Font Viewer** which allows you to easily install fonts but only for current users. If you want to install fonts for all users, you must install them manually (we will guide you in the "Manual font settings for all users" section below).

Download the font you want to install in **TrueType (.ttf)** or **OpenType (.otf) format** . The font usually has the **.zip** format, so right-click the **.zip** file and select **Extract Here** .

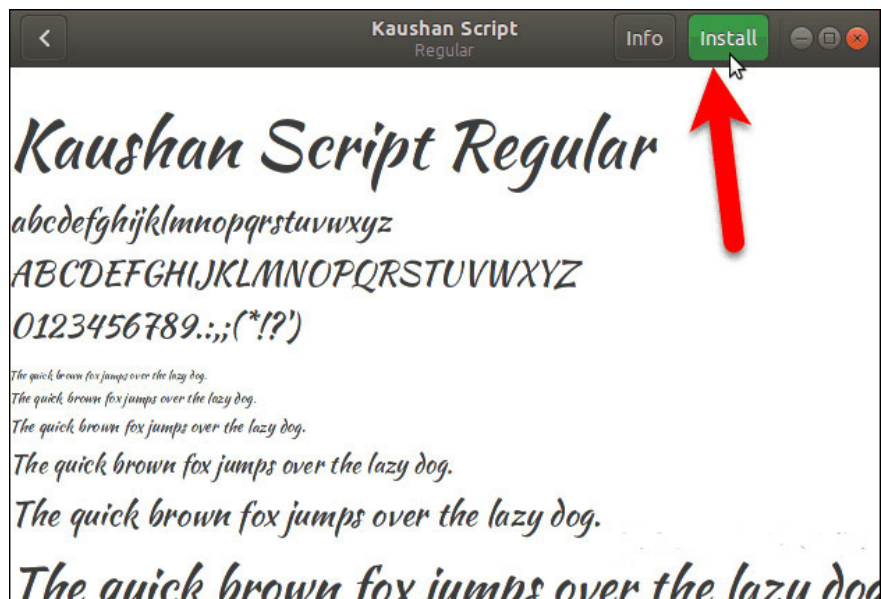


Then, double click on the font file.



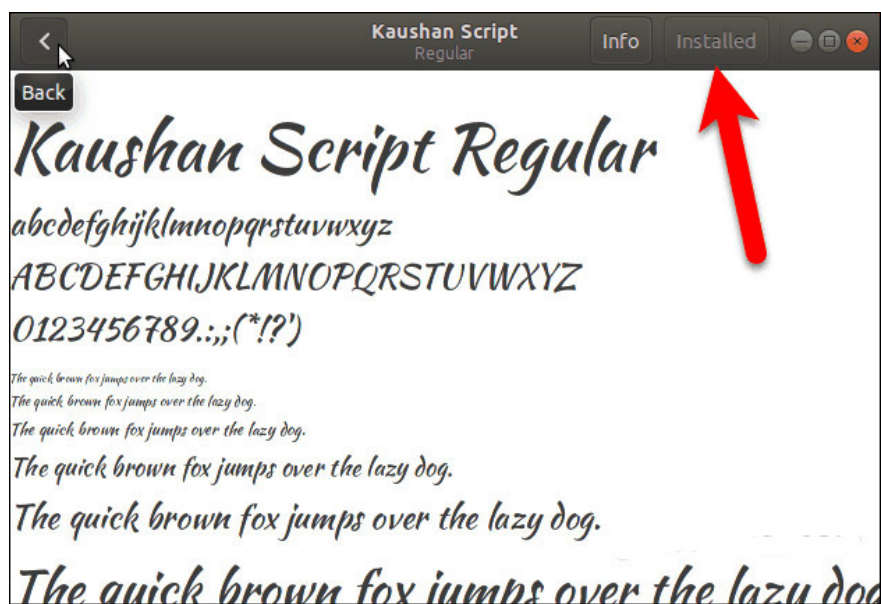
The preview window in **Fonts Viewer** shows what the font looks like.

Click **Install** .

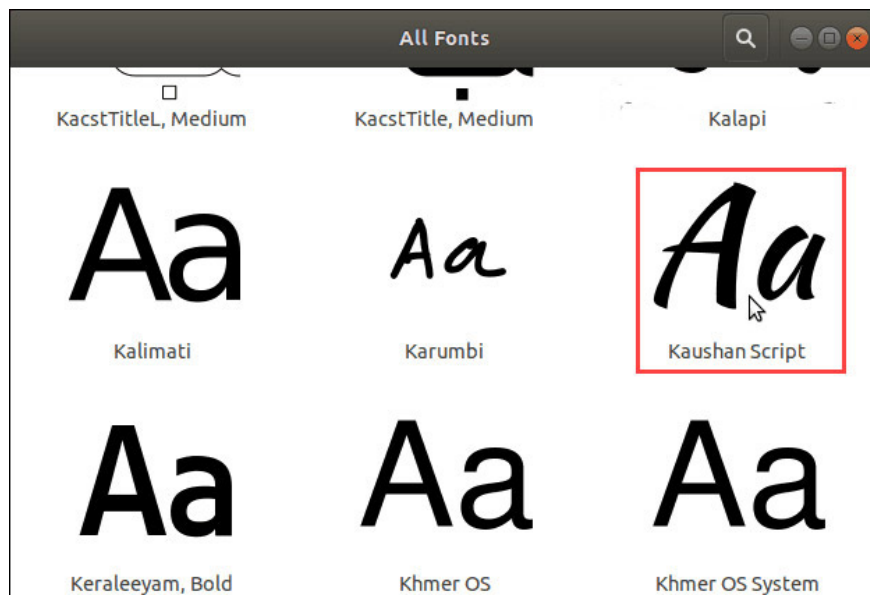


The ' **Installed** ' message will replace the **Install** button when the font is installed.

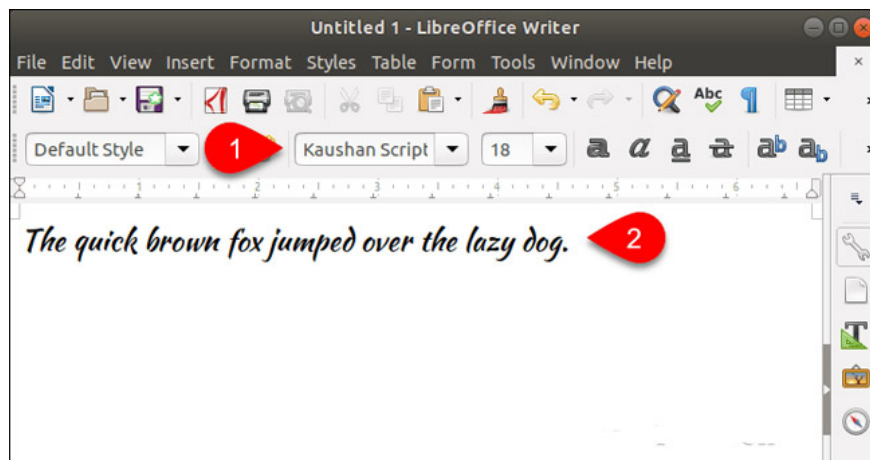
To return to the **All Fonts** window, click the **Back** button in the upper left corner.



The installed font is displayed in the list of all fonts on your system.



Now, you can choose a new font in any word processing application, such as **LibreOffice Writer** .



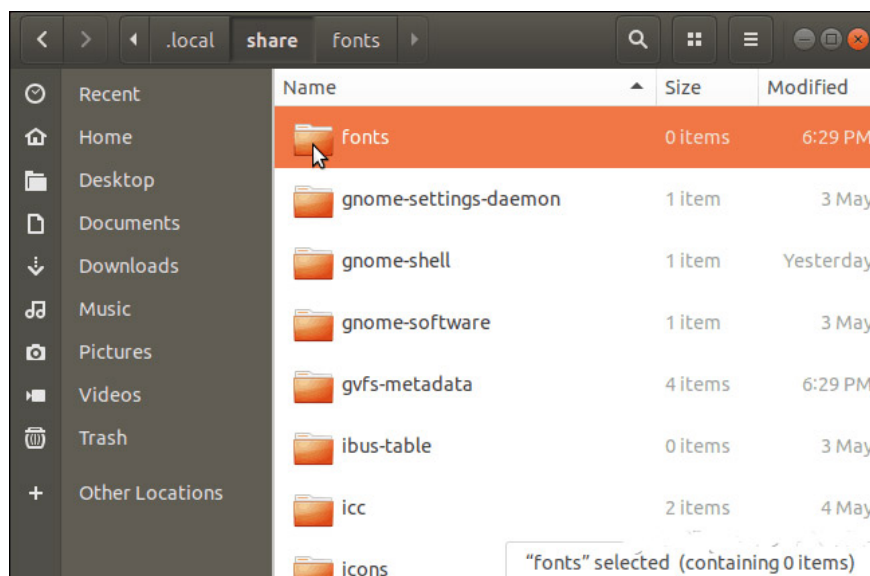
Manually install fonts for a specific user

To manually install fonts for specific users, first log in to that user's account. Then, open the file manager, **Nautilus** example in **Ubuntu** and move to the `~ / .local / share` folder. The tilde character (`~`) represents the **Home** folder, for example `/ home / lori` .

Files and folders starting with dots (`.`) Are hidden. So if you don't see the **.local** folder in the **Home** folder, press **Ctrl + H** to display hidden files and folders.

If you see the **Fonts** folder in the **Share** folder your job is complete. If not, create a new folder called " **Fonts** " in the **Share** folder. In most file managers, just right-click and select **New Folder** .

Copy and paste the font files into the `~ / .local / share / fonts directory` to install them for the current user.

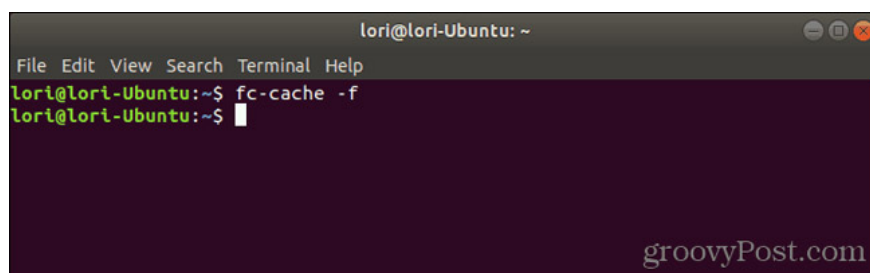


After installing the font manually for the current user, you must update your font cache to register the font in the system.

Press **Ctrl + Alt + T** to open the Terminal window. Type the following command at the prompt and press **Enter**

```
fc-cache -f
```

The `-f` option forces you to recreate all font files, whether they have been changed or not. This ensures all your fonts are available.



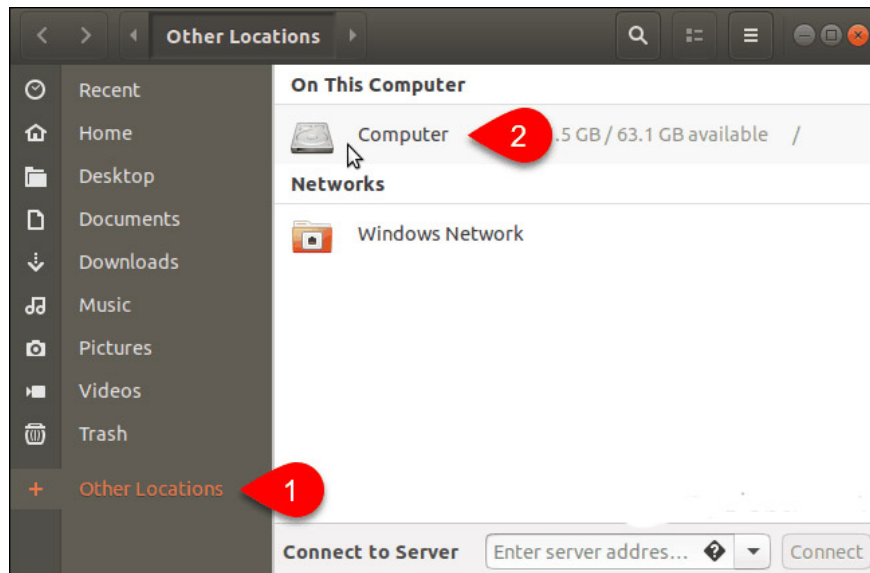
Manually install fonts for all users

If you want your font to be available to all users on the system, you must install it manually. This procedure is similar to the manual font installation process for current users. But you will need to access the directory you will paste the font into with admin permissions. We will use Nautilus in Ubuntu to manually install fonts for all users. So before proceeding, install the necessary options into the right-click menu in Nautilus.

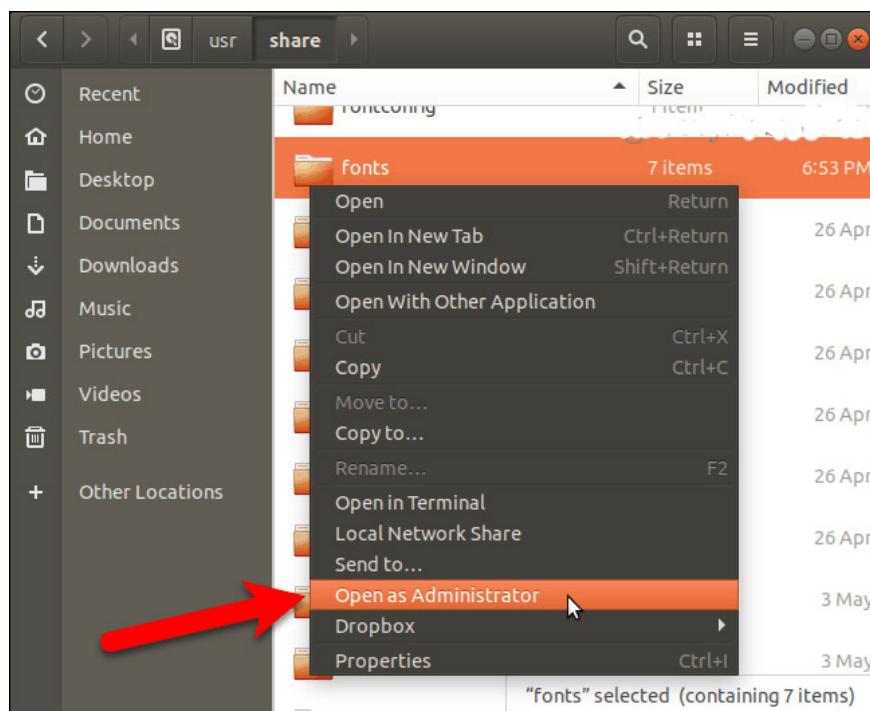
This process is very similar in manager files in other Linux systems, such as Linux Mint or Fedora.

In Nautilus, navigate to the folder containing the fonts you want to install, select the font files and copy them (using the **Ctrl + C** key combination).

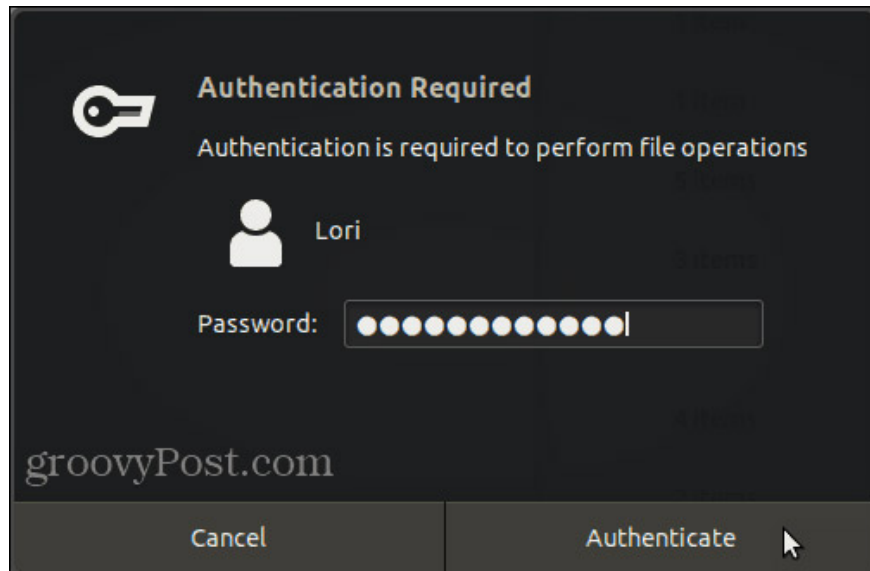
Then, click **Other Locations** at the bottom of the list on the left and click **Computer** on the right.



Navigate to the `/usr/share` folder. You will paste the copied fonts into the **Fonts** folder. But first, open the Fonts folder with administrator privileges by right-clicking on the Fonts folder and selecting **Open as Administrator**.

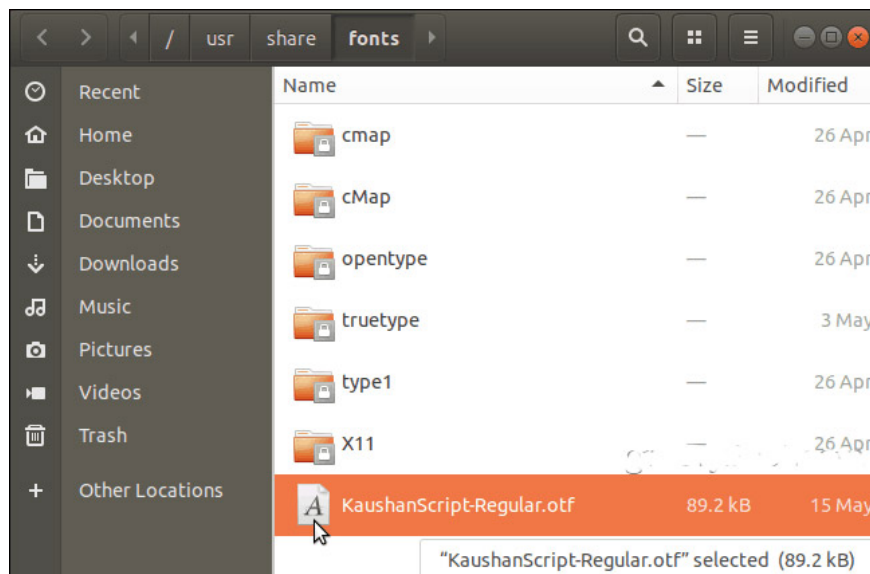


Enter the password in the **Authentication Required** dialog box and click **Authenticate**.



A new Nautilus window opens directly to the Fonts folder with administrator privileges.

Paste the font files you copied into the Fonts folder.



After installing the font manually for the current user, you must update the font cache to register the font in the system.

Press **Ctrl + Alt + T** to open the Terminal window. Type the following command at the prompt and press **Enter**

```
fc-cache -f
```

```
lori@lori-Ubuntu: ~  
File Edit View Search Terminal Help  
lori@lori-Ubuntu:~$ fc-cache -f  
lori@lori-Ubuntu:~$
```

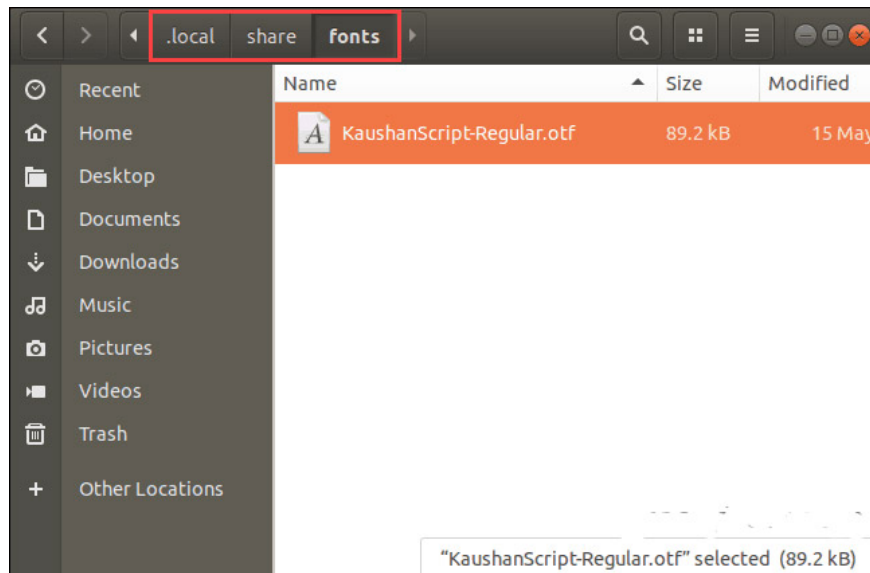
groovyPost.com

Remove fonts on Linux

Removing fonts on Linux must be done manually, no matter which method you use to install them. Fonts Viewer does not provide a way to remove fonts.

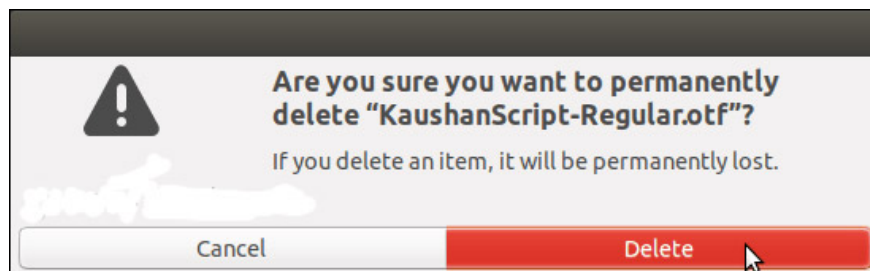
To remove an installed font for current users only, open Nautilus and navigate to the `~ / .local / share / fonts` folder.

After that, select the font you want to delete and press **Delete** . You will not see the confirmation dialog.



If you are deleting the installed font for all users, you must use the command line. You must open the Fonts folder in the `/usr / share` folder as an administrator as described in the previous section.

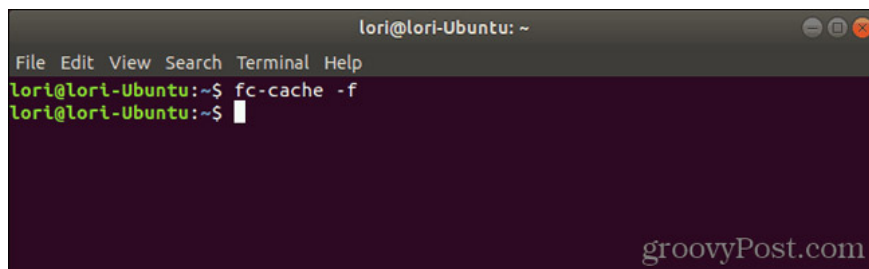
Select the font you want to delete and press **Delete** . Then, click **Delete** on the display confirmation dialog.



After deleting the font installed for all users, you must update the font cache to unsubscribe the font in the system.

Press **Ctrl + Alt + T** to open the Terminal window. Type the following command at the prompt and press **Enter**

```
fc-cache -f
```

A screenshot of a Linux terminal window. The window title is 'lori@lori-Ubuntu: ~'. The menu bar includes 'File Edit View Search Terminal Help'. The terminal shows the prompt 'lori@lori-Ubuntu:~\$' followed by the command 'fc-cache -f'. The prompt returns to 'lori@lori-Ubuntu:~\$' with a cursor. A watermark 'groovyPost.com' is visible in the bottom right corner of the terminal window.

Good luck!

See more:

1. [How to install fonts and print Vietnamese on Linux](#)
2. [Instructions for installing Windows Fonts on Ubuntu](#)
3. [Install and use fonts in Linux](#)

You finished reading the article "**How to install and remove fonts on Linux**" edited by the [TipsMake](#) team. We hope this article has provided you with many useful tech tips and tricks. You can search for similar articles on tips and guides. Thank you for reading and for following us regularly.