

# How to install and play PBE Teamfight Tactics server

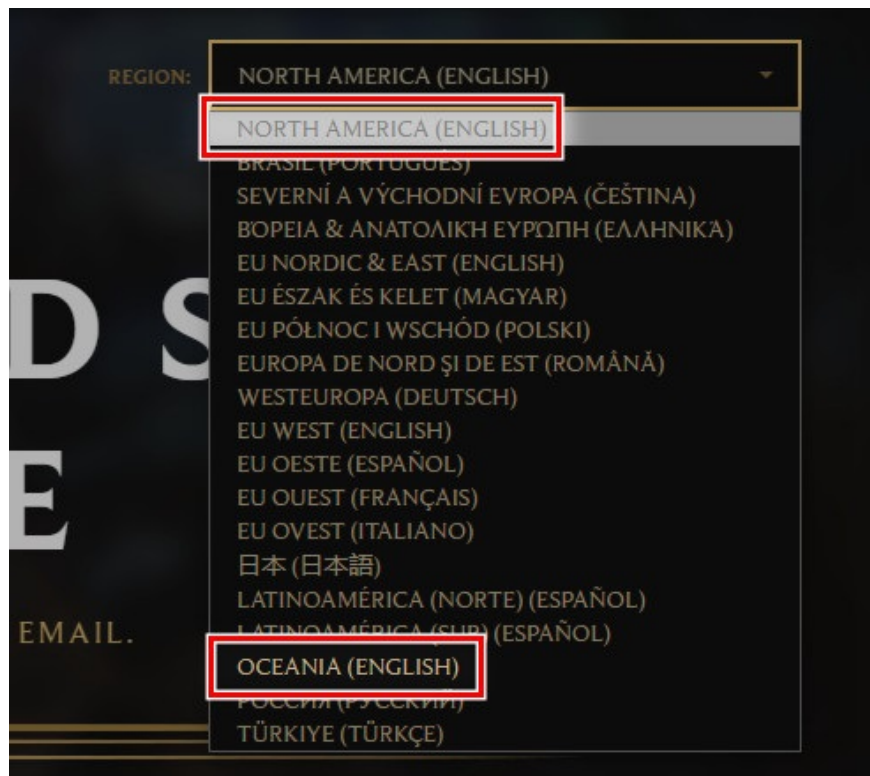
Teamfight Tactics also has a test server called Public Beta Environment (PBE), allowing users to install and pre-experience new Teamfight Tactics version content, find bugs and notify NPH for them to fix before major release. stay awake.

Thus, you can completely experience the latest version of Teamfight Tactics after installing PBE server, **Teamfight Tactics** and League of **Legends** test server . Follow the instructions below of TipsMake to download and install PBE server, play Truth Arena on the official test server from Riot Games.

## Instructions to download and install PBE Teamfight Tactics server

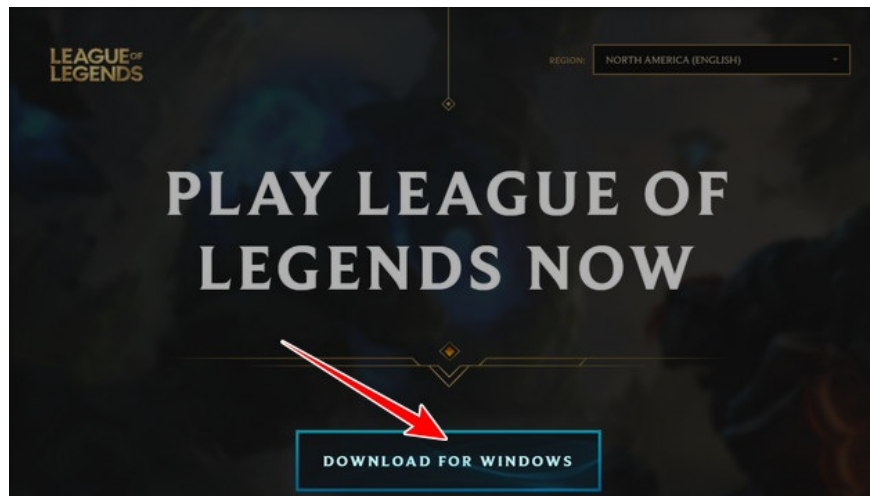
Step 1: Create a PBE Teamfight Tactics server account

- Visit the link [here](#)
- Create a Riot Games account in NA or Oceania region.



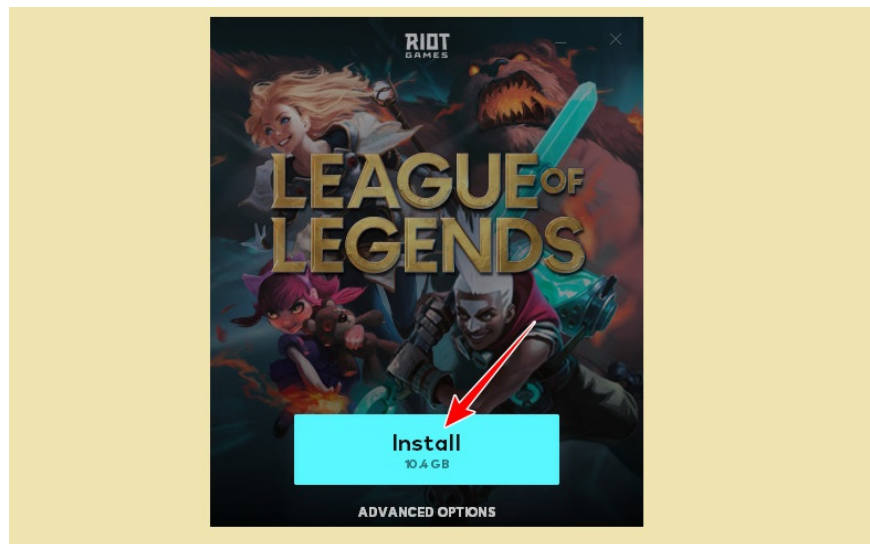
Step 2: Download the PBE Teamfight Tactics client server

- After registration is complete, click the Download For Windows button.



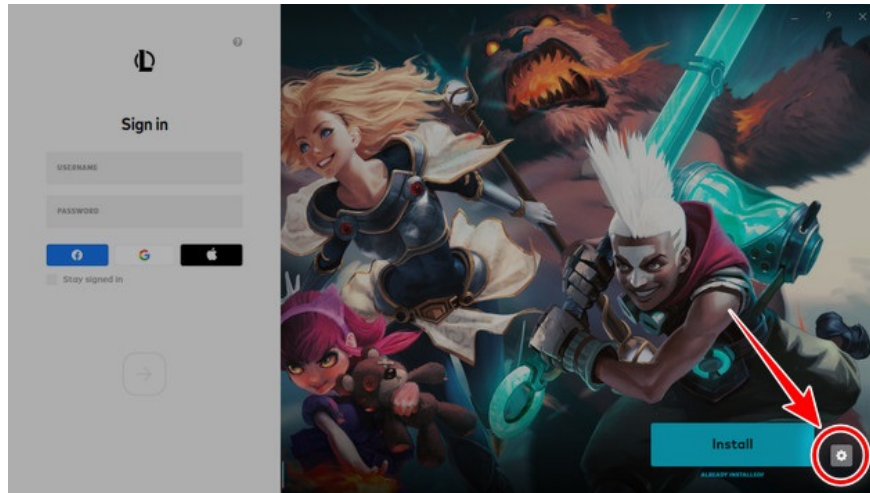
Step 3: Install a client server PBE Teamfight Tactics

- Click directly on the downloaded file in Step 2, if you want to change the installation directory, choose Advanced Options, and don't click Install.



Step 4: Set up Client Teamfight Tactics server PBE

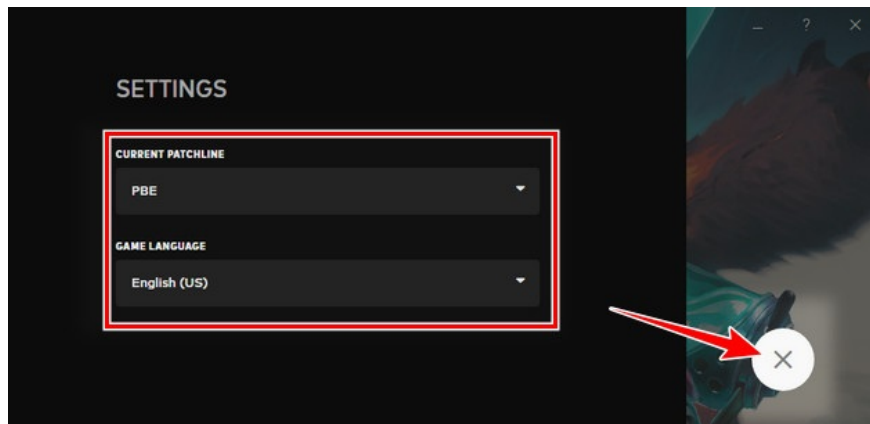
Click on the settings icon at the bottom of the Client panel.



- In the Settings panel, set as the picture below => click X.

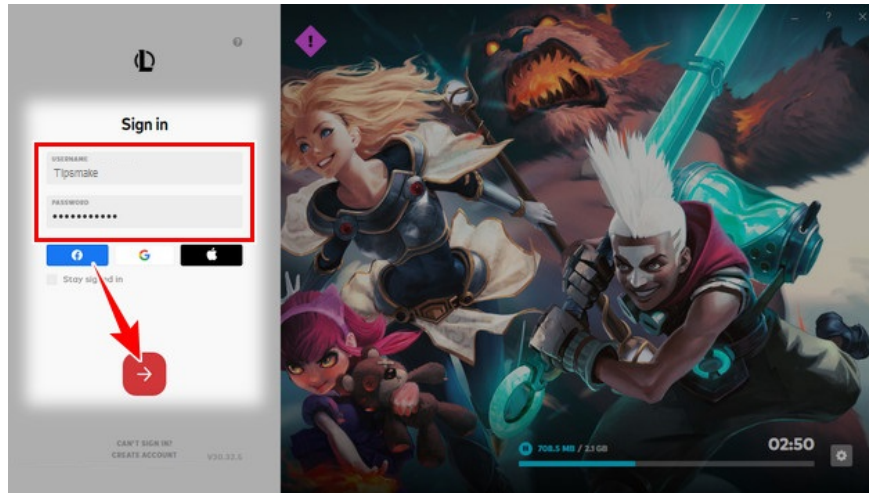
+ Current Patchline: Select PBE

+ Game Language: English (US)

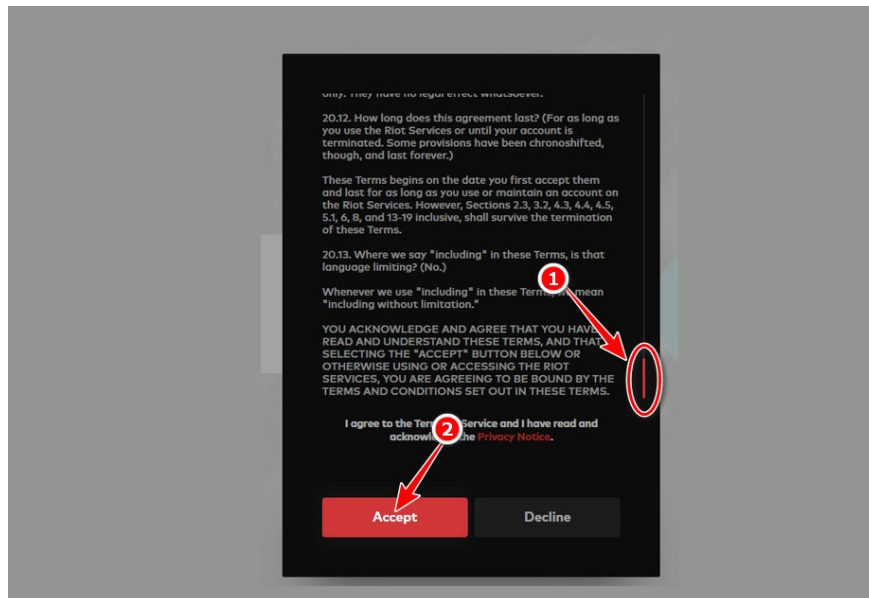


Step 5: Login to your PBE Teamfight Tactics server account

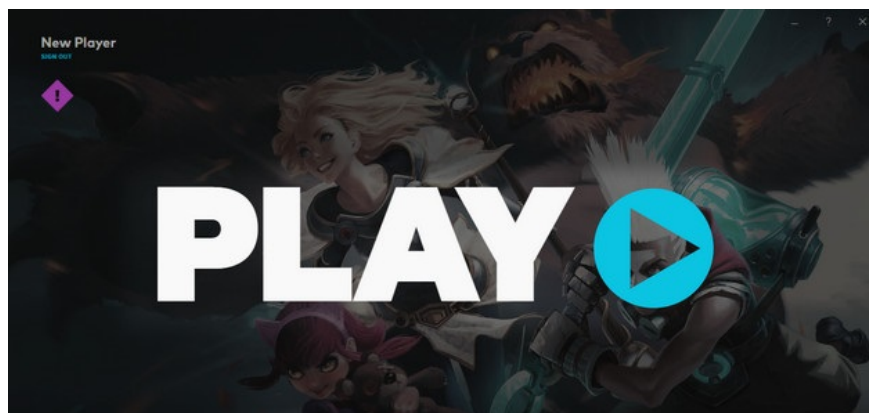
- At the Client interface, enter the Username (account) and Password (password) you created in Step 1 into the system => select the red arrow button below.



- Step 6: Agree to the terms and service policy of the NPH
- Next, scroll to the bottom of the notification button.
  - Select the Accept button, agree to the Riot Games terms and privacy policy.



- Step 7: Click the Play button in the middle of the screen



Step 8: Name the server account PBE Teamfight Tactics

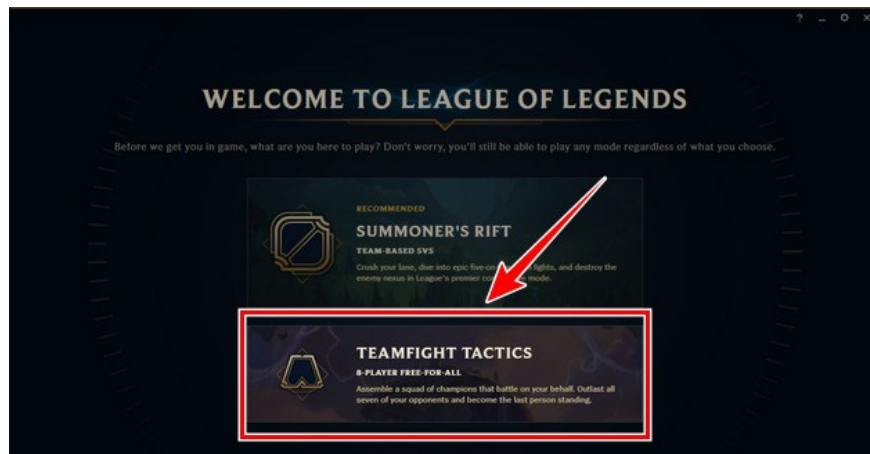
- Put your account name in the box => click Start Now.

+ Note: The maximum name includes 16 characters, both alphanumeric, without any special characters.



Step 9: Play beta version of Truth Arena server PBE

- Select Teamfight Tactics below.



- Finally, click the Play button located in the top left corner, join the Truth Arena chess board battle battles at the PBE server.



Above are all instructions on how to download, install and play the new version of Truth Arena at the PBE test server. Currently, the latest version of the Truth Arena game has been released, readers can refer to the detailed content of the update via the link below.

You finished reading the article "**How to install and play PBE Teamfight Tactics server**" edited by the [TipsMake](#) team. We hope this article has provided you with many useful tech tips and tricks. You can search for similar articles on tips and guides. Thank you for reading and for following us regularly.