

How to install and configure Java tax declaration online

When filing online tax, paying taxes online, users need to install Java-Plugin on the computer, an indispensable component when paying taxes.

Java-Plugin is a necessary tool, indispensable when users pay taxes, declare tax online. However, not everyone knows how to install Java-Plugin, or during installation there are some errors that make the tool work unstable. This will affect the online tax return.

The following article will guide users to install Java-Plugin and configure the software on the computer to declare tax online. In case you are installing the Java-Plugin but encounter problems such as software conflicts, please uninstall it and proceed to reinstall according to the following article.

1. How to read XML files with iTaxViewer software
2. Trick to create XML files in Word 2003
3. How to fix Vietnamese typing error on HTKK

How to configure Java-Plugin on the computer

Step 1:

Click on the link below to download and install the Java-Plugin software. In the first interface, click the **Install** button.

1. Download the Java-Plugin software



Step 2:

Wait for the software installation process to be completed on the computer.



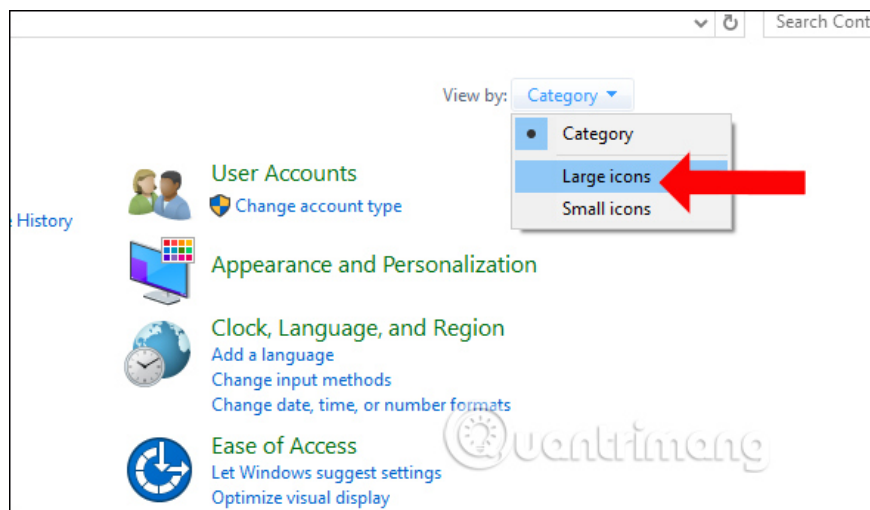
Step 3:

When the dialog box dialog box appears as shown below, the Java-Plugin installation process is completed. Click **Close** to close the interface.

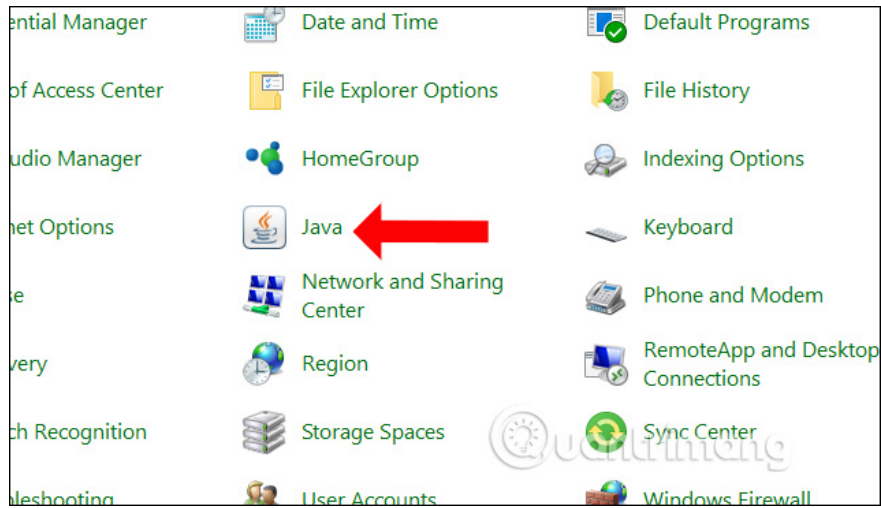


Step 4:

Next click on **Control Panel** on the computer. In this interface, click **View** by clicking on **Large icons** .

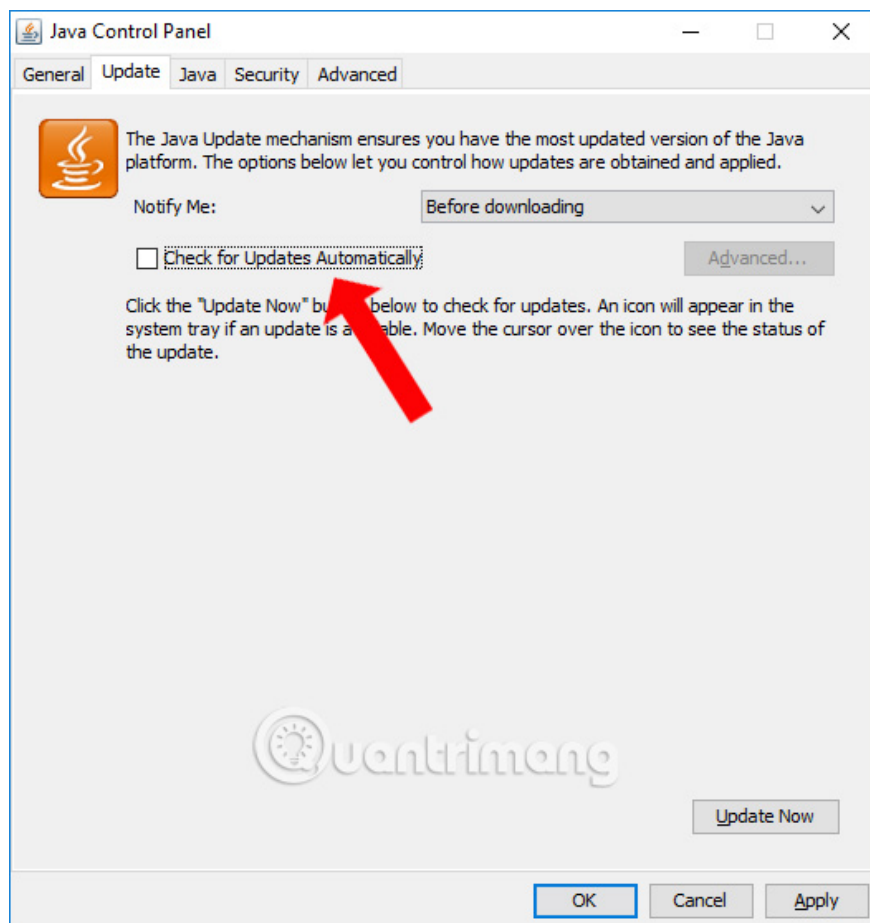


We will then see **the Java software icon** appear on the computer. Here, click on the Java software to proceed with the configuration.

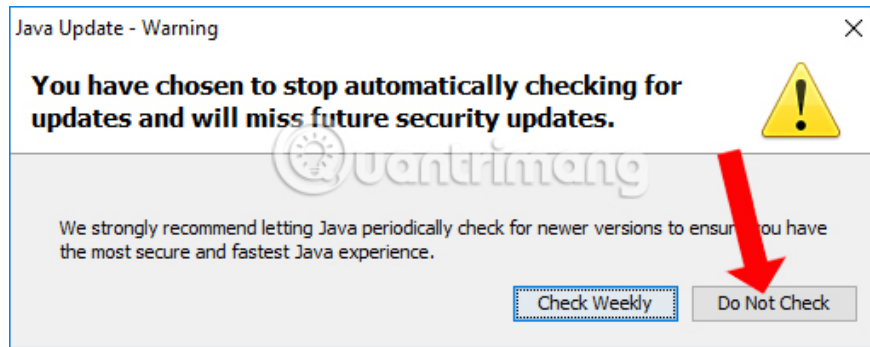


Step 5:

Appear the Java Control Panel interface, click the Update tab, and **uncheck the Check for Updates Automatically section** . This will avoid checking the latest version to limit the installation of many Java versions causing software conflicts.

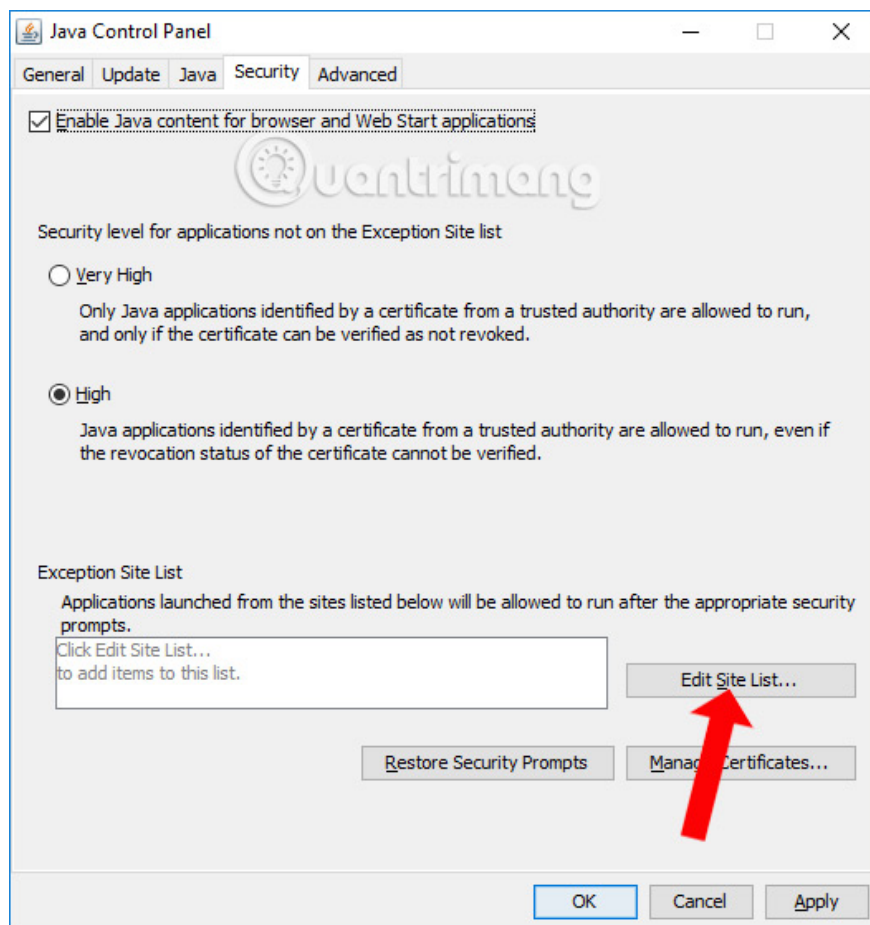


When the message shown below is displayed, click **Do Not Check** .



Step 6:

Next click on the **Security tab**, check **Enable Java content for browser and Web Start applications** if not already integrated, and then click **Edit Site List**.

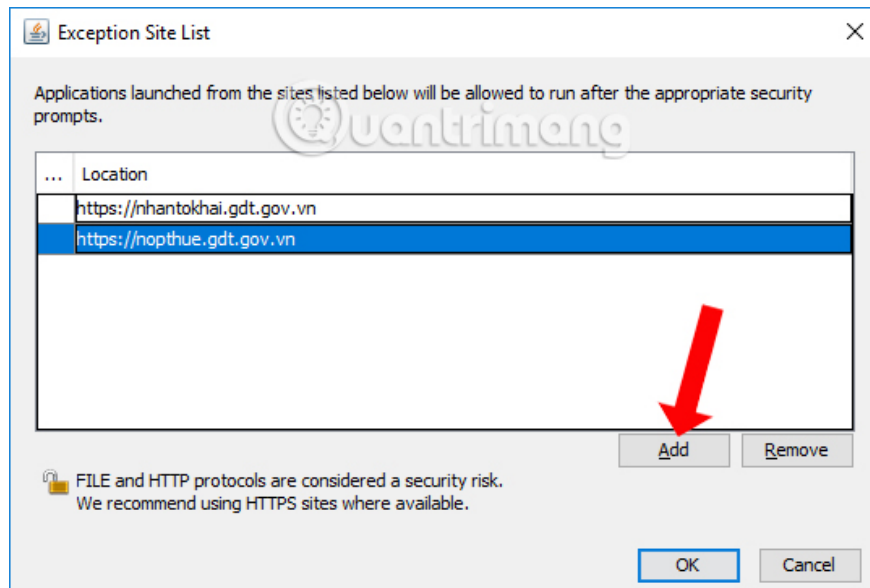


Step 7:

In the **Exception Site List** interface, click on **Add** to add the tax declaration site, each time you press the Add button, you will be added an address line. There are 3 sites for tax declaration for users.

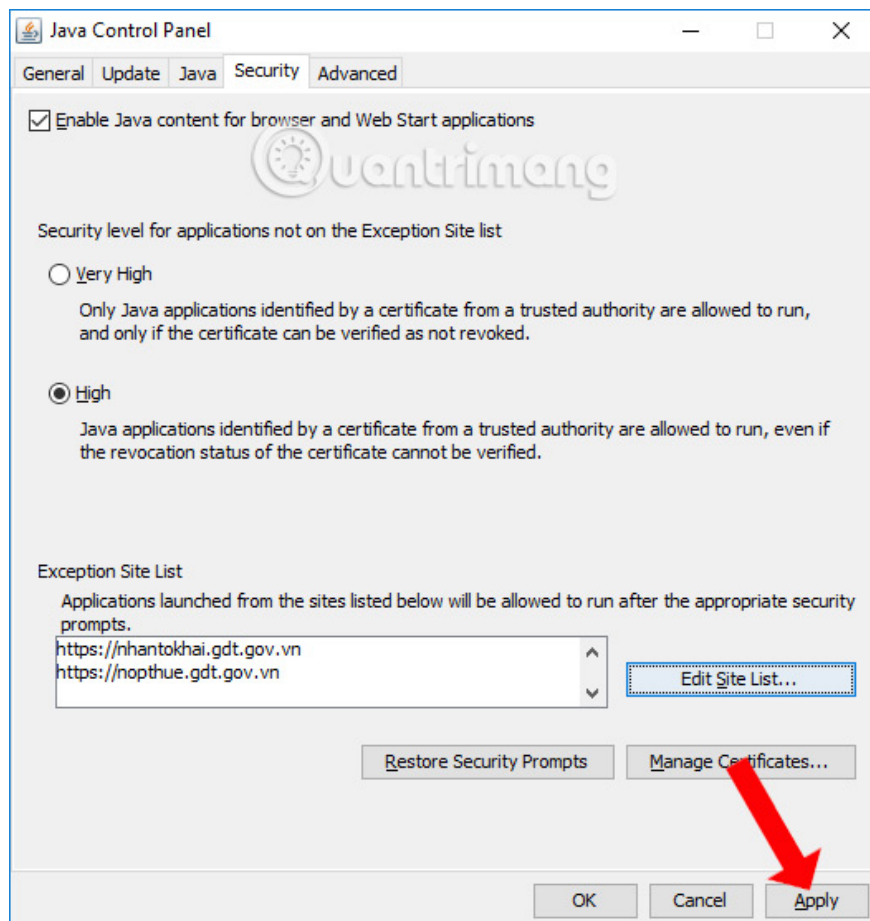
1. <https://nhantokhai.gdt.gov.vn>
2. <https://nopthue.gdt.gov.vn>
3. <https://thuedientu.gdt.gov.vn>

Once you have added a tax return site, **click OK** below.



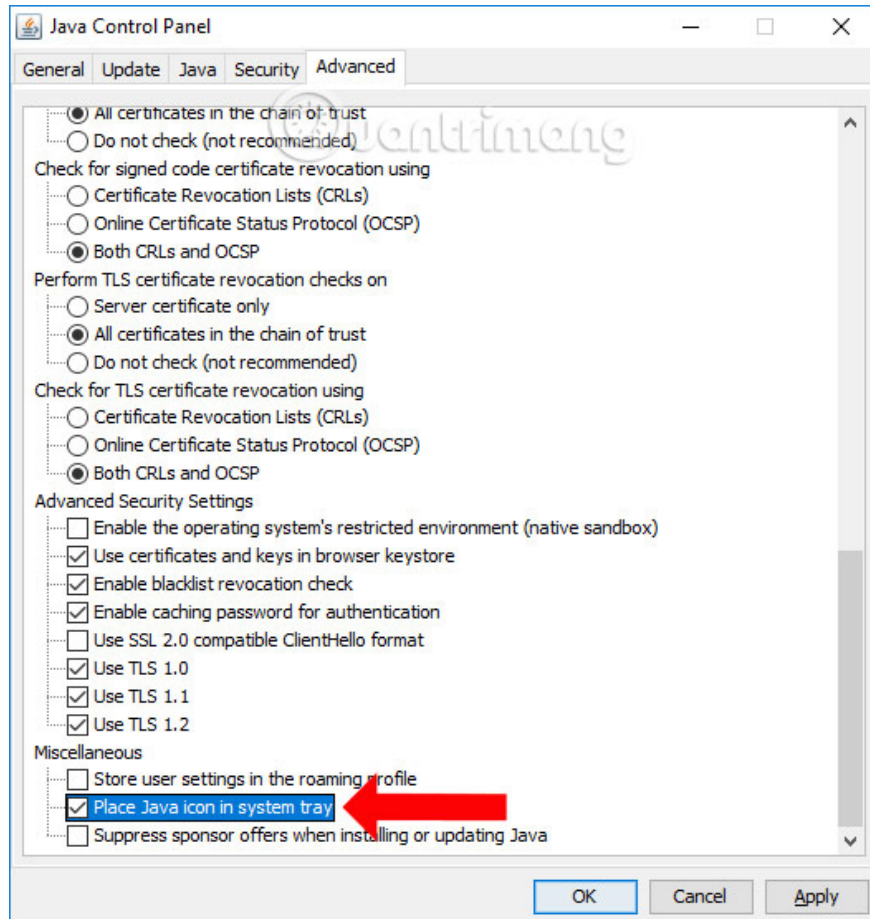
Step 8:

Finally **click Apply** and click **OK** to save.



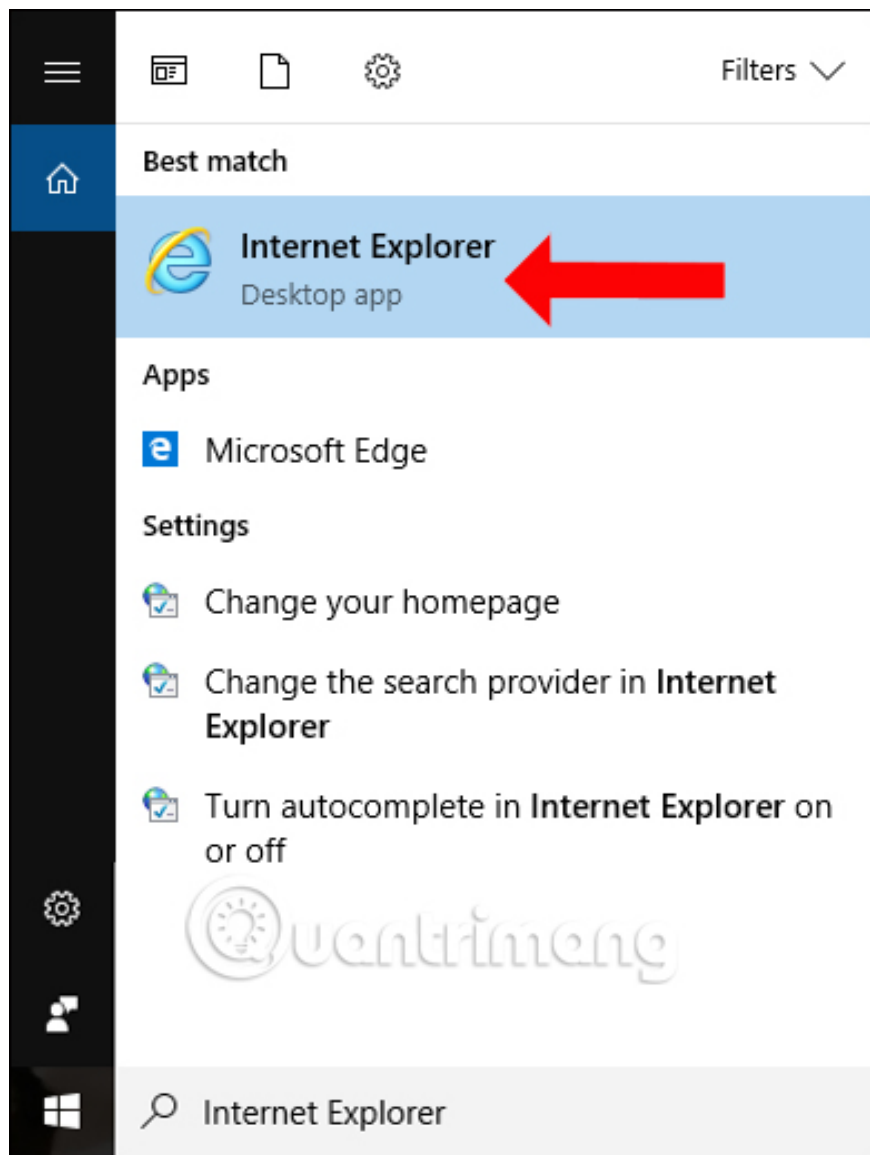
Step 9:

Next click on the **Advanced** tab , scroll down, in the **Miscellaneous** section, select **Place Java icon in system tray** . Thus, the Java-Plugin configuration has been completed.



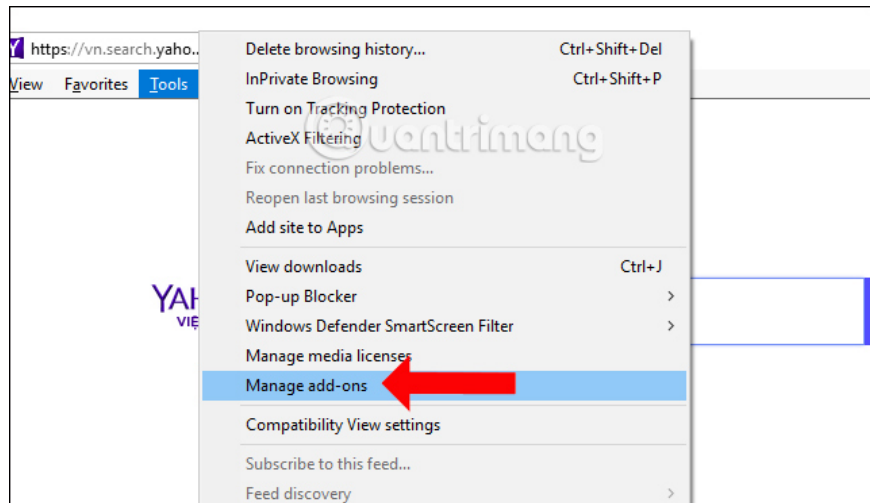
Step 10:

The user will then check the configuration on Internet Explorer. At the search bar, **click Internet Explorer** , then click on IE's icon to launch it.



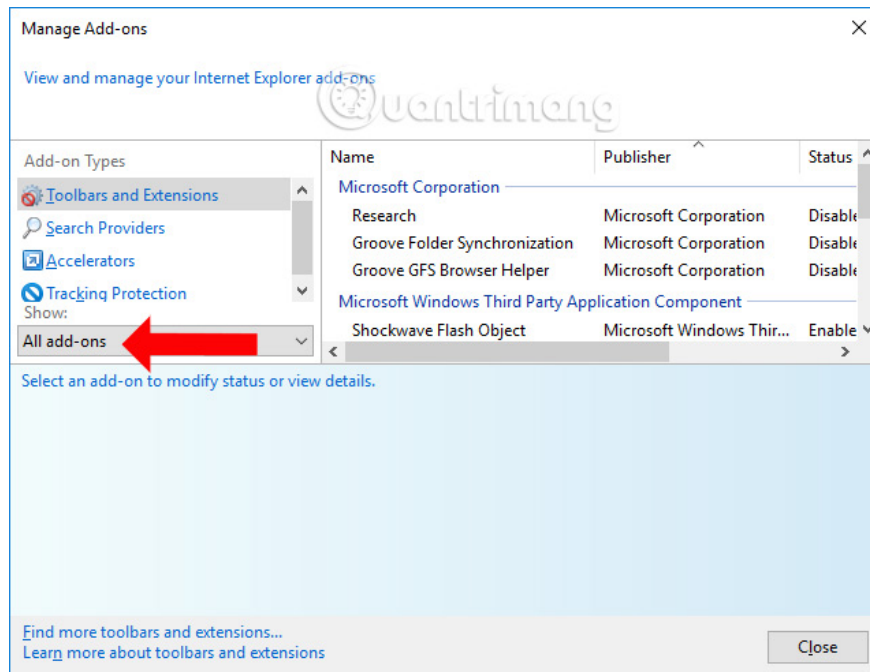
Step 11:

In the Internet Explorer interface, **press and hold the Alt button** to open the toolbar, select **Tools** and then select **Manage add-ons** .



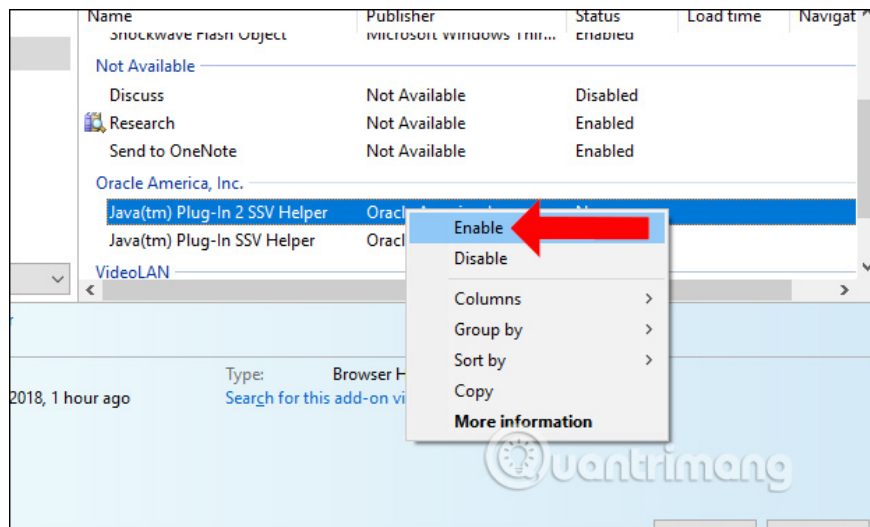
Step 12:

In the Add-ons management interface, select **All add-ons** in the **Show** section to display all existing Add-ons in IE browser.



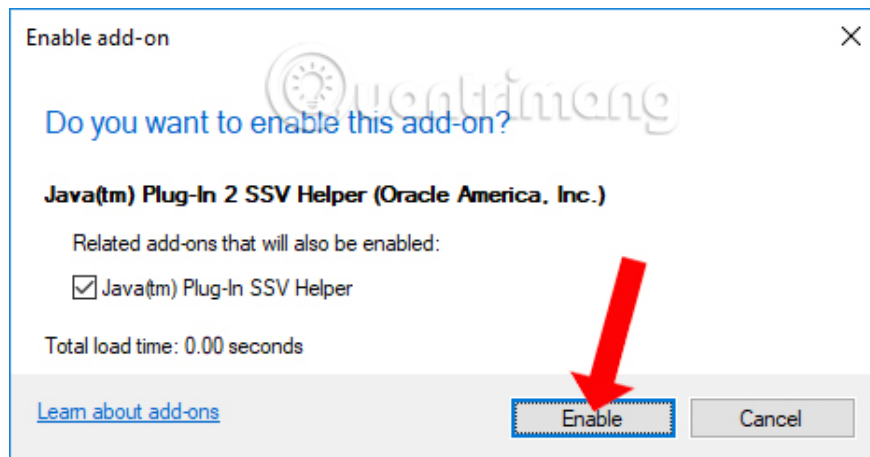
Step 13:

Looking to the right of the **Oracle America, Inc** line you will find **two Java-Plugin entries** , if you are in Disable status, right- **click** and **click Enable** to enable both Java-Plugins.



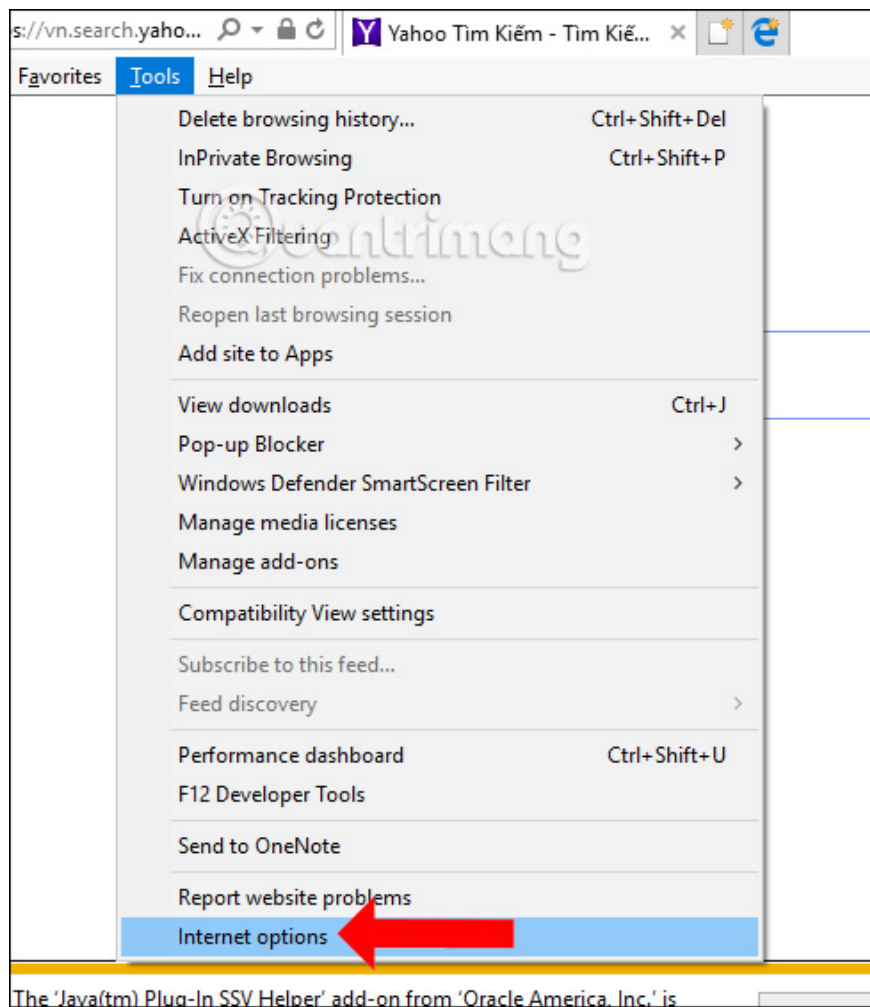
Step 14:

If the message shown below is displayed, click the **Enable** button to activate.



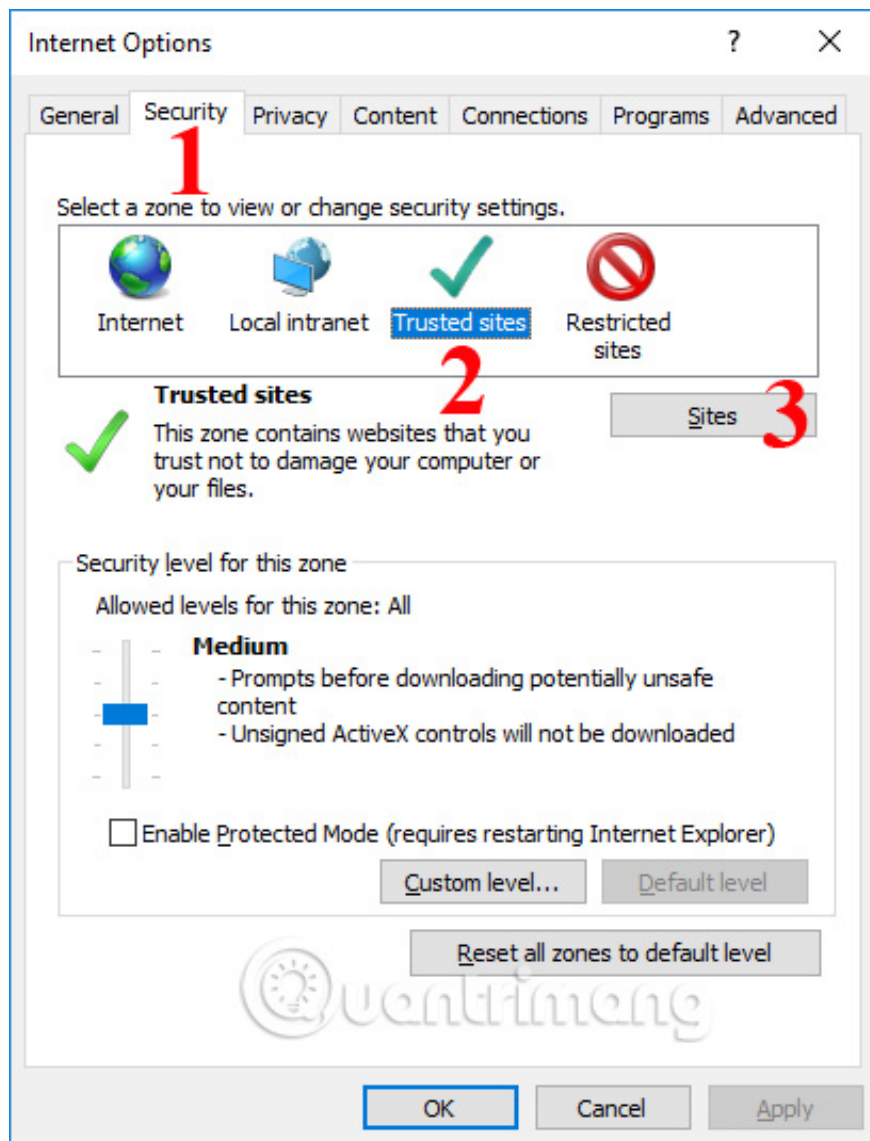
Step 15:

Now go back to the main interface of IE, click on **Tools** then select **Internet Options** .



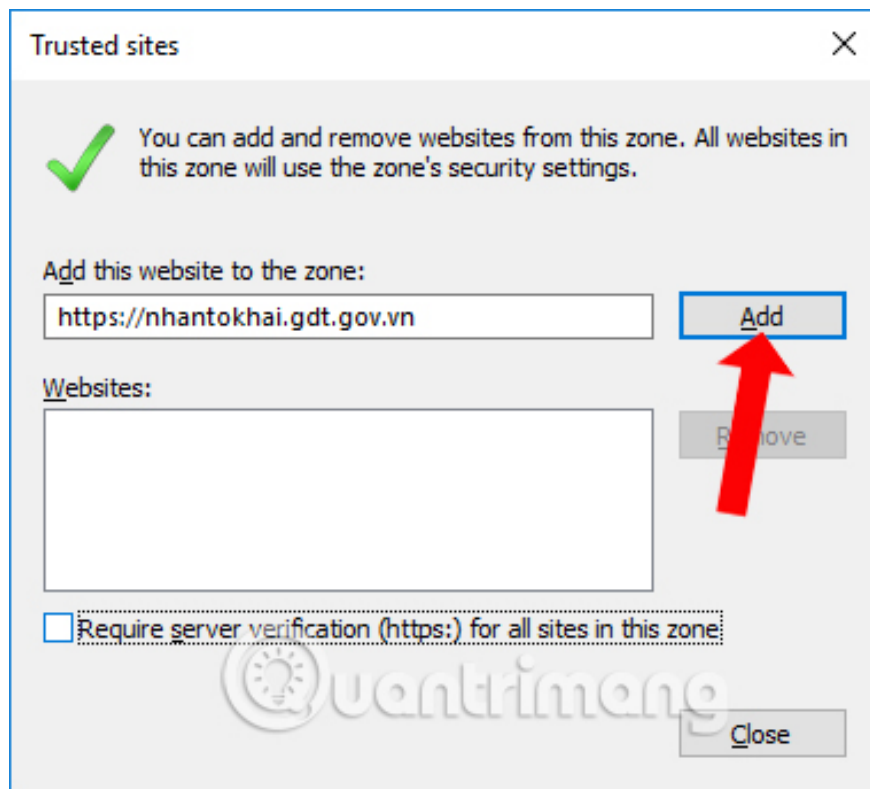
Step 16:

In the Internet Options interface, select the **Security tab** , select **Trusted sited** and click **Sites** to add the site.



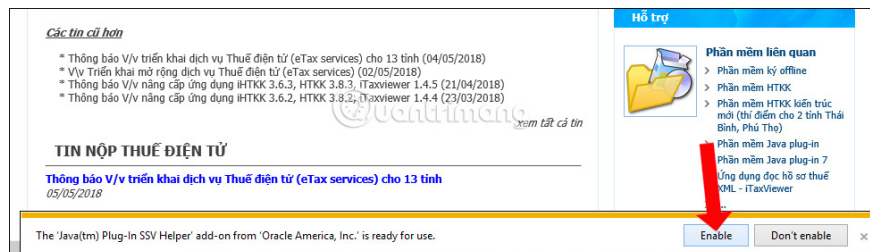
Step 17:

Now **copy the tax return site** to the address line and **click Add** to add the website list. The Require server verification line (https :) for all sites in this zone can be unchecked.



Step 18:

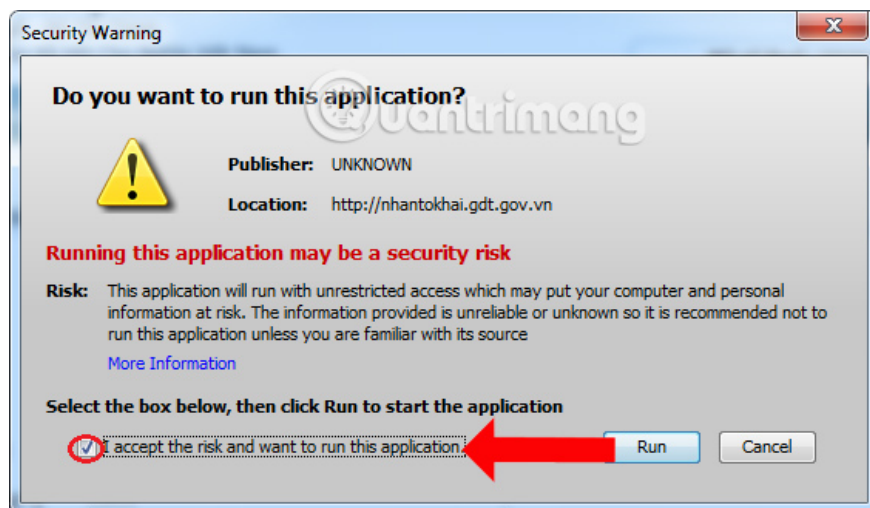
Go to the tax return page and you will see a notification in the interface below, press **Enable**.



Or will appear some messages like the image below, click **Run** to run the Java application, leave it at Don't show this again for apps from the publisher and location above.



Or as shown in the image below, check on **I accept the risk and want to run this application** .



So to be able to declare tax online, you need to install Java-Plugin and then proceed with the configuration as above. If you have enabled the Java application, but when you access the tax declaration page, a Java run message will appear and you will only need to activate it again.

See more:

1. Convert XML into relational data used in DB2
2. Instructions on how to run / open Java files (.jar)
3. What is JavaScript? Can the Internet exist without JavaScript?

I wish you all success!

You finished reading the article "**How to install and configure Java tax declaration online**" edited by the [TipsMake](#) team. We hope this article has provided you with many useful tech tips and tricks. You can search for similar articles on tips and guides. Thank you for reading and for following us regularly.