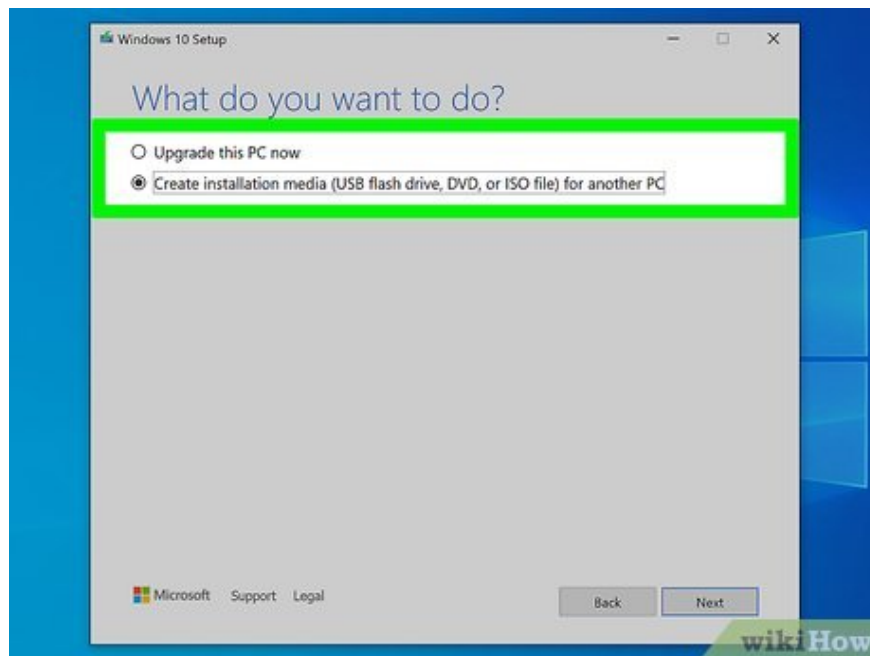


How to Install an Operating System on a New Computer

This article explains how to install the operating system on a new computer. You can do this on a Windows computer using Windows installation media. New Mac computers always come with an operating system pre-installed, but you can reinstall your Mac's default operating system using the macOS restore feature.

Install Windows 10



Create Windows installation media. If you order Windows 10 for a new computer, the vendor will send you installation media. If you don't have Windows installation media, you can create your own. You need a computer with an internet connection and a USB with 8GB capacity (preferably 16GB). You also need to know whether the computer about to install Windows 10 has a 32-bit or 64-bit configuration. Additionally, you also need to purchase Windows to receive a product key. This can be done before or after the installation process. Use the following steps to create Windows installation media:

Insert a USB with at least 8GB capacity into any computer with an internet connection. This will erase any data stored on the USB; So, back up any data you want to keep.

Go to <https://www.microsoft.com/en-us/software-download/windows10> using a web browser.

Click **Download Tool Now** .

Open the file "MediaCreationTool.exe" in your browser or Downloads folder.

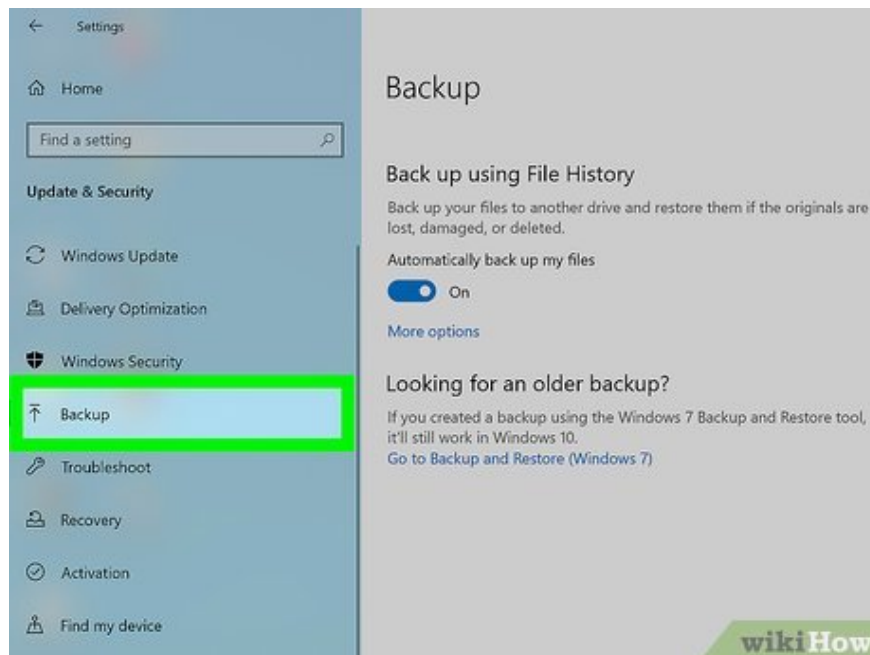
Click **Accept** .

Select "Create Installation Media (USB drive, DVD, ISO file) for another PC" and click **Next** .

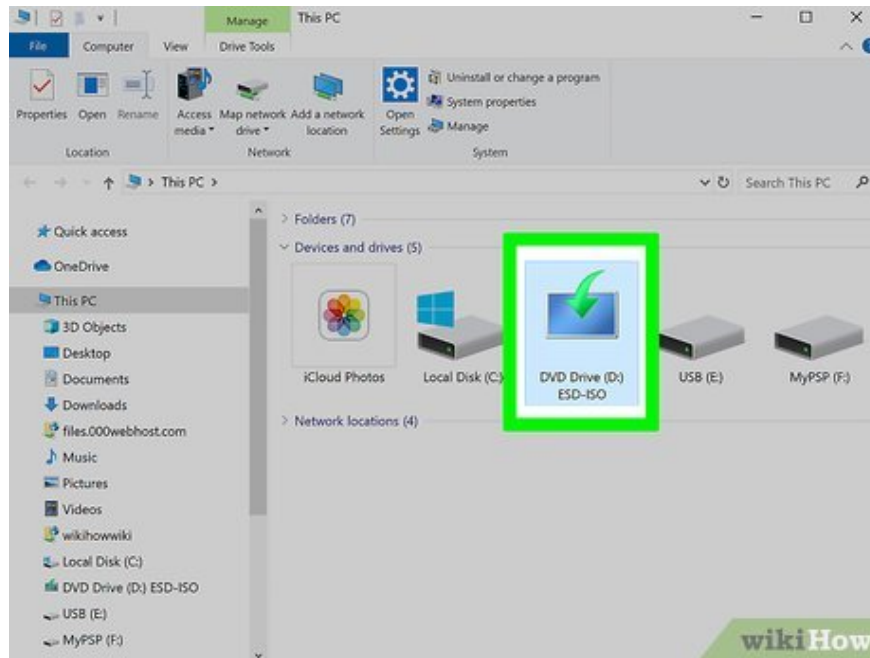
Select your language, Windows version, and computer configuration, then click **Next** .

Select "USB flash drive" and click **Next** .

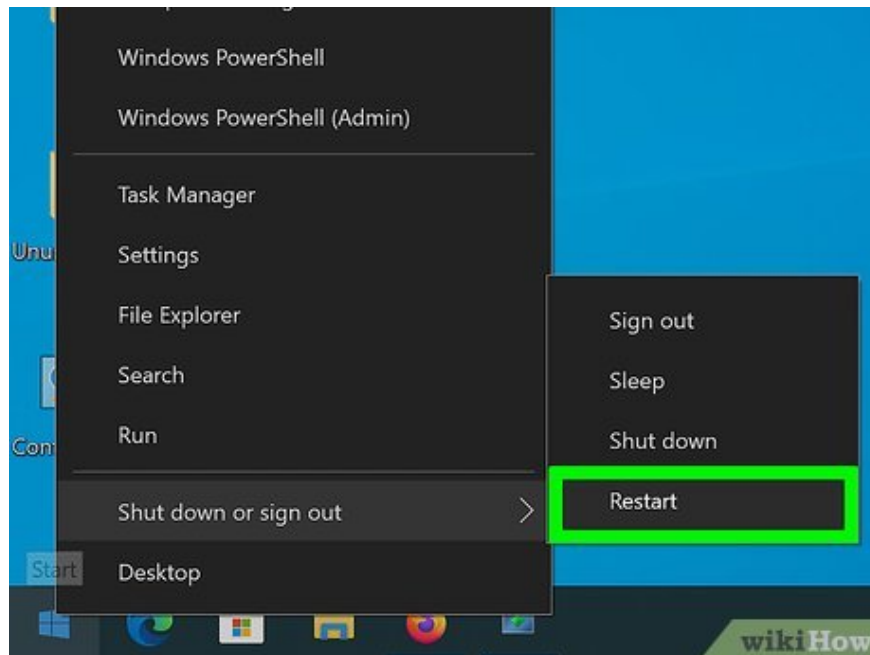
Select your USB and click **Next** .



Back up files (optional). If you already have Windows installed on your computer, the new Windows installation will overwrite your files. Back up any data you want to keep before starting a new Windows installation. You can back up files to OneDrive, Google Drive, Dropbox, or an external hard drive or USB.



Insert the Windows installation media into the computer where you want to install Windows. You can attach the Windows installation media to any available USB port.



Start the computer. If you turned on the computer, restart it according to the operating system installed on the computer. If you haven't turned on the computer yet, just press the power button to start it.



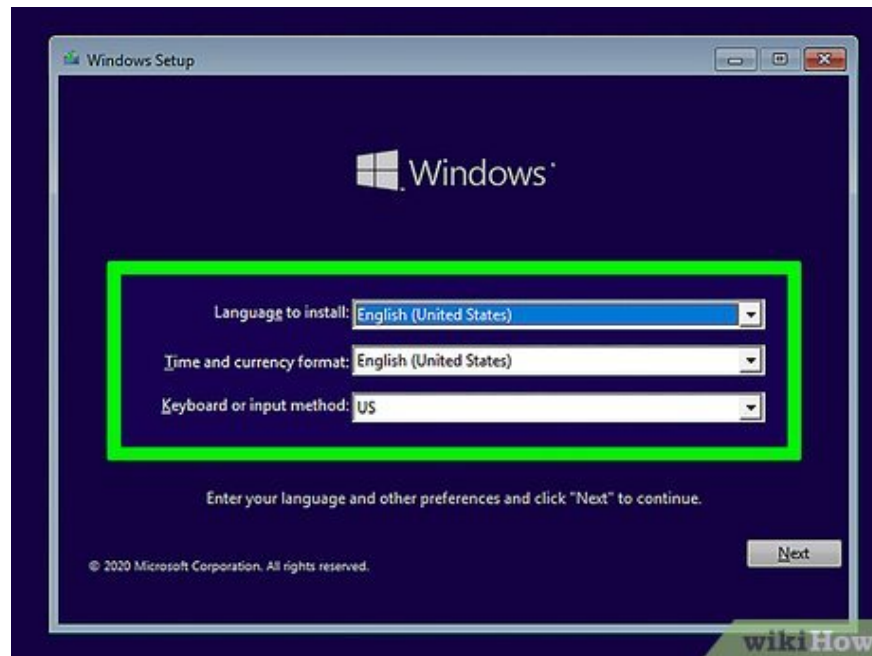
Access the Boot menu. Most newer computers have a Boot menu that you can access while the computer is starting up. However, the access method will vary depending on the motherboard. The most common way to access the Boot menu is to press the **F10** , **F11** , **F12** , **F2** or **Esc** key while the computer boots. The Boot menu will display a list of drives from which you can boot.

If you use an older computer that doesn't have a Boot menu, access the BIOS while the computer boots. The keys used to access the BIOS will vary depending on the computer manufacturer. The screen will display information about the keys that need to be pressed while the computer boots. Commonly used keys to access BIOS are **F1** , **F2** , **F3** , **Esc** or **Delete** . You need to act quickly at this step. You can also boot your computer into BIOS using the Windows Settings menu.

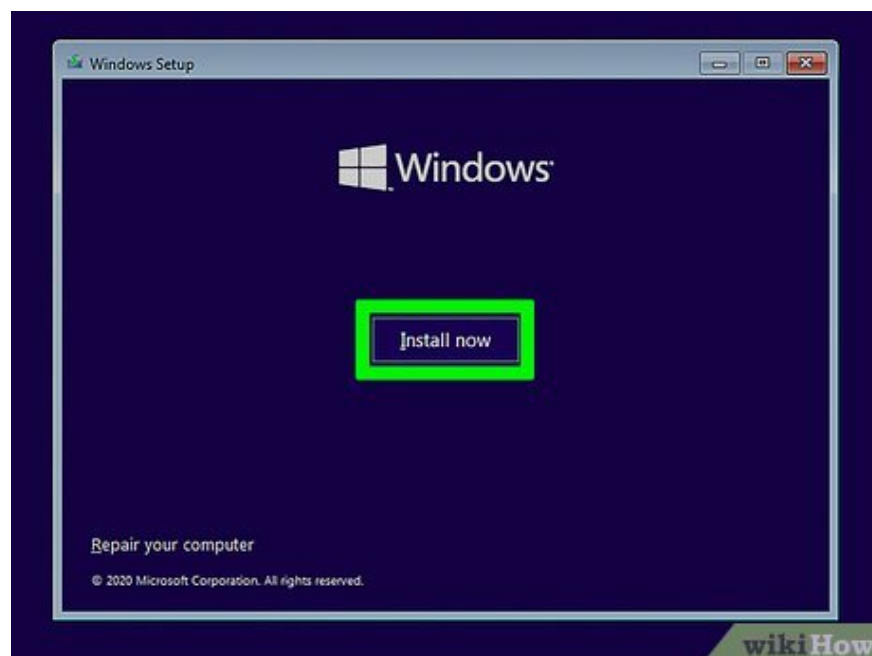


Select USB. This is the drive that contains the Windows installation media. The computer will boot from the Windows installation media. When the computer boots from USB, you need to press any key to start the Windows installation process.

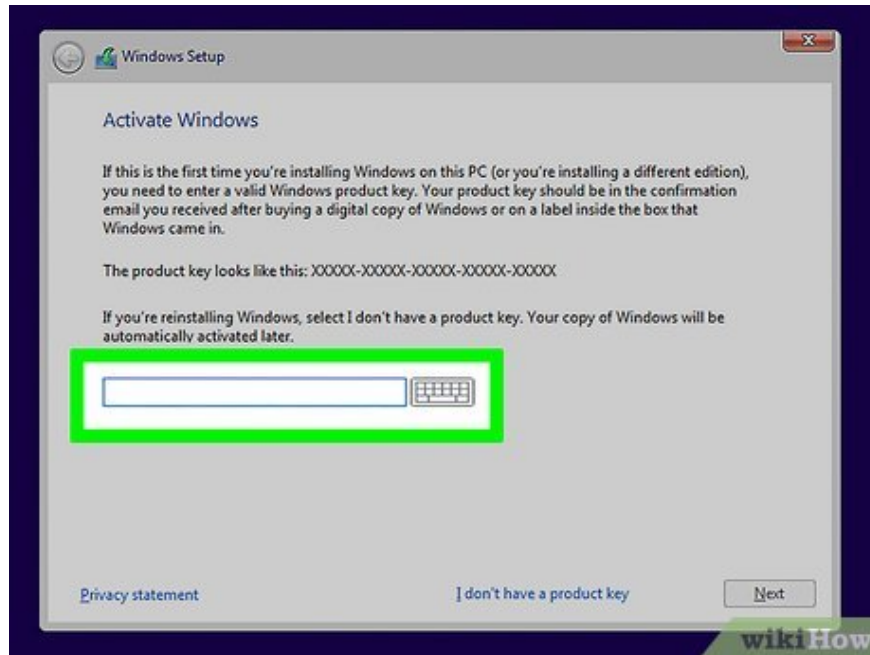
If you're opening BIOS setup, look for "Boot", "Boot order", "Priorities" or something similar. You need to change the boot order so that the computer boots from USB first, then select save and exit. This will boot the computer from the USB.



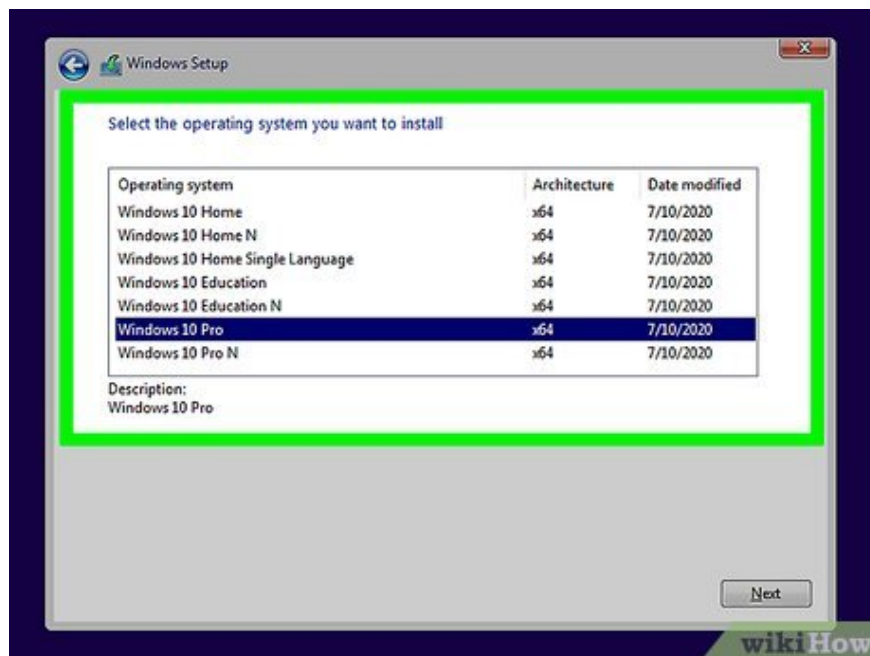
Select language, time, currency, and keyboard and click Next . First, you can select the language from the selection list. Next, select the country or region, and keyboard, then click **Next** .



Click Install Now . It's the button in the middle of the screen.



Enter your Windows product key and click Next . If you purchased Windows, you can find your product key in your confirmation email. If you haven't purchased Windows yet, you'll click **I don't have a product key** . You still have to buy Windows and activate it later.

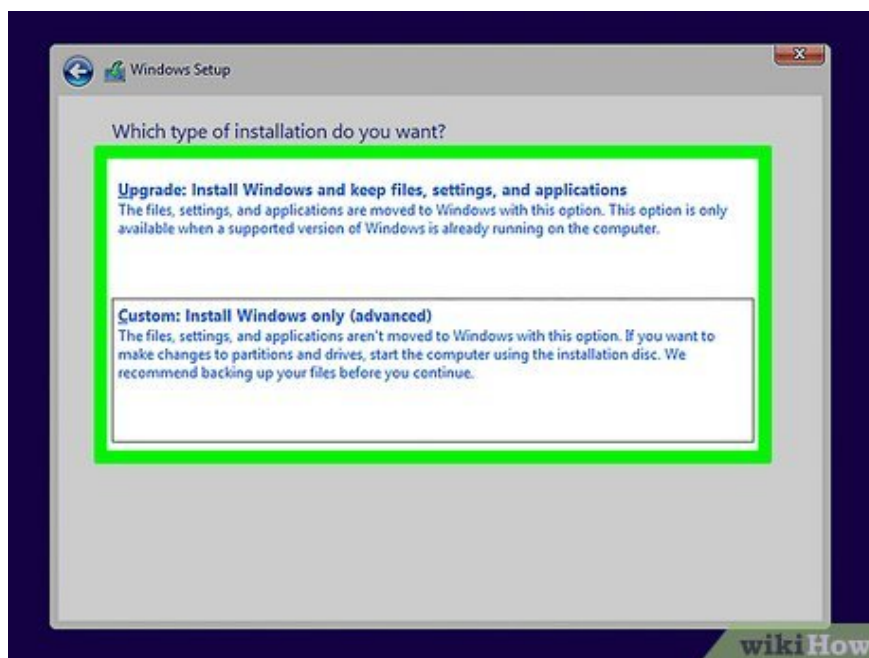


Select the version of Windows you want to install and click Next . If you purchased Windows, check the version of Windows purchased and click on the appropriate version. If you haven't purchased Windows yet, you should find out which version you need to install. Each version of Windows has a different price.

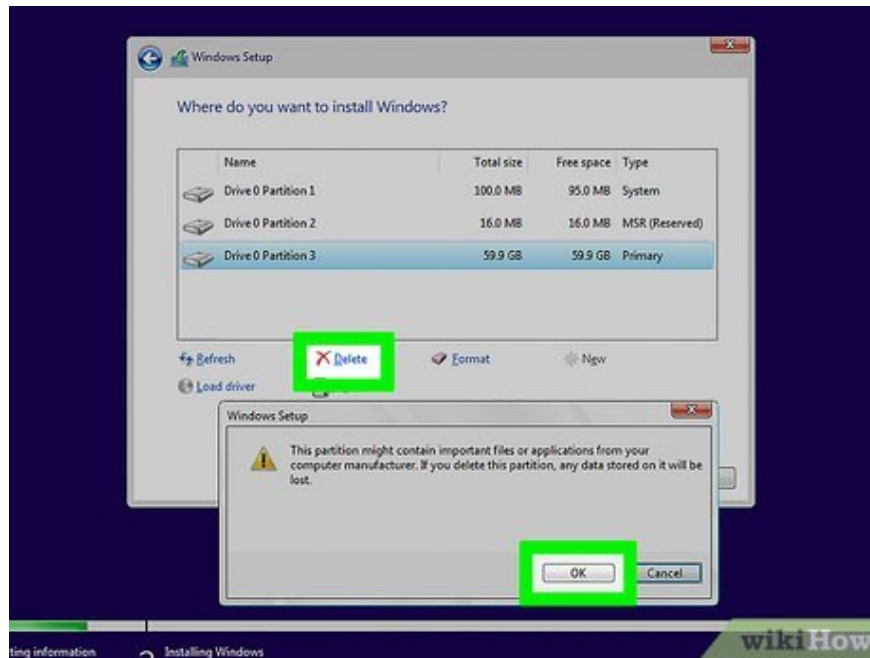
If you're not sure which version of Windows to install, Windows Home Edition is the most popular version of Windows.



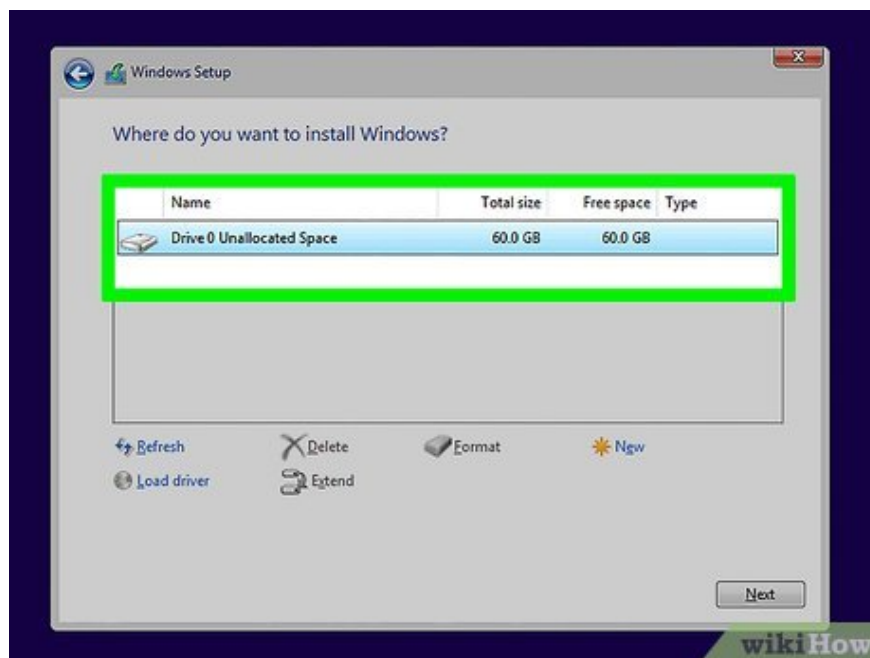
Click the check box next to "I accept the license terms" and click Next . You can read the license terms in the middle window. Click Next when you're ready to continue.



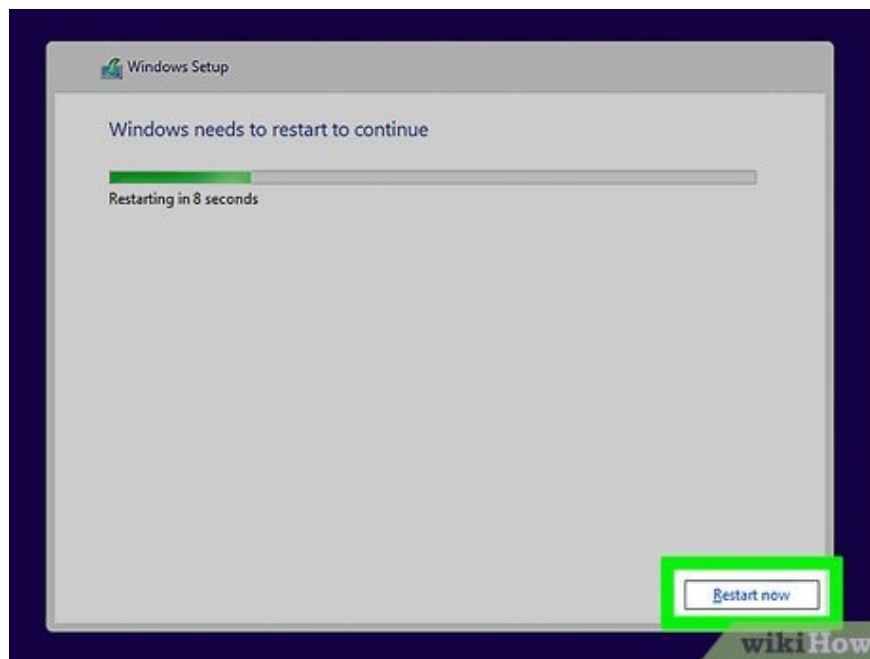
Click Custom: Install Windows only or Upgrade: Install Windows and keep files, settings, and applications. If your computer already has Windows installed, click Upgrade: Install Windows and keep files, settings, and applications . If your computer does not have Windows installed or you need to reinstall Windows, you will select Custom: Install Windows only .



Select the drive or partition where you want to install Windows and click Delete . If the computer has multiple hard drives or the hard drive has multiple partitions, select the partition where you want to install Windows and click **Delete** . You should note that this operation will erase all data on the hard drive. Make sure you have backed up all important data before continuing. You will have an unpartitioned hard drive after this operation.

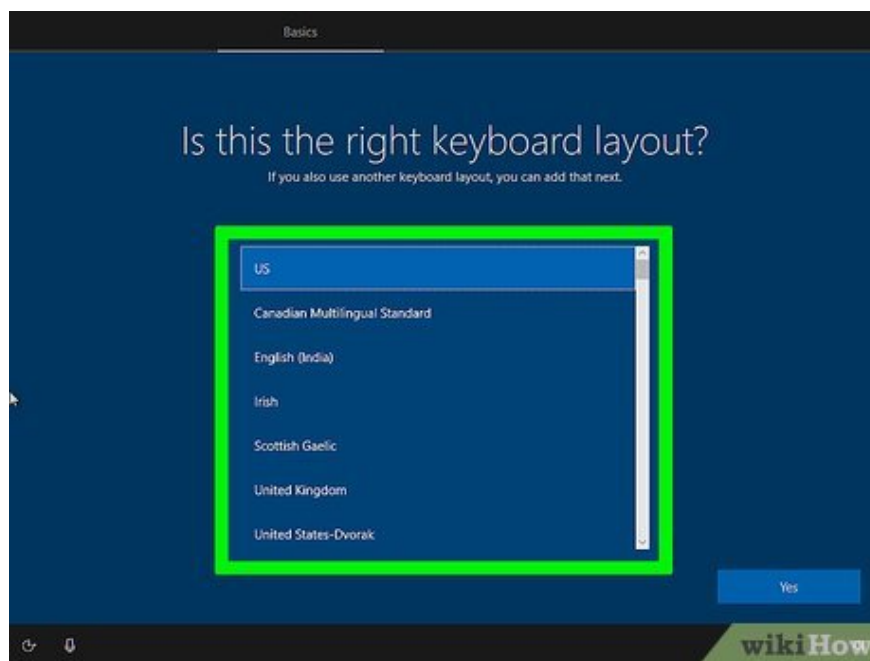


Select the unpartitioned hard drive and click Next . Windows installation will begin on the drive you selected. Installation time depends on the computer's hard drive.



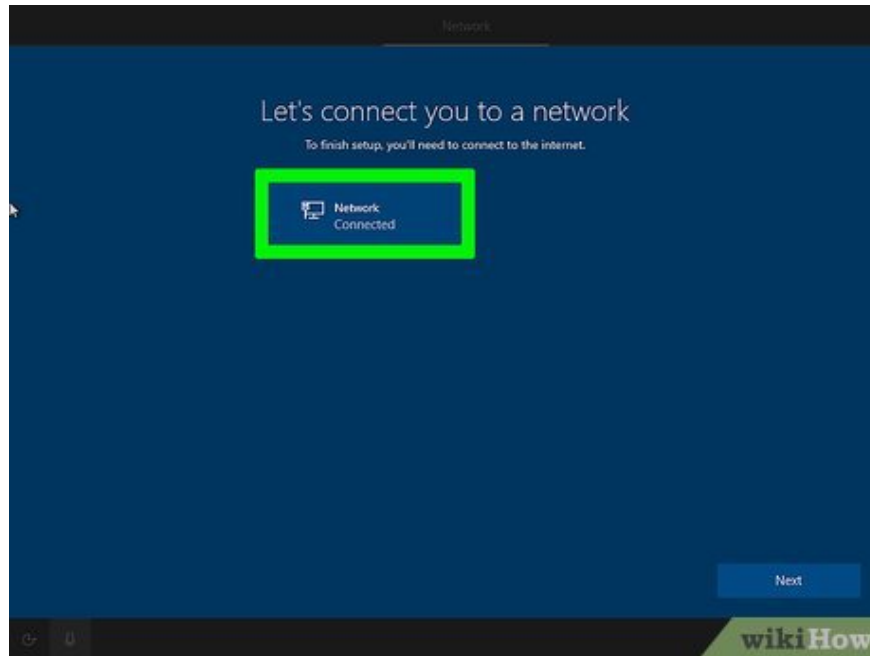
Remove the USB and restart the computer. When Windows completes the installation, the computer will automatically restart. Please remove the USB so the computer will no longer boot from the USB. The first time Windows starts, you need to go through the setup process.

Set up Windows 10



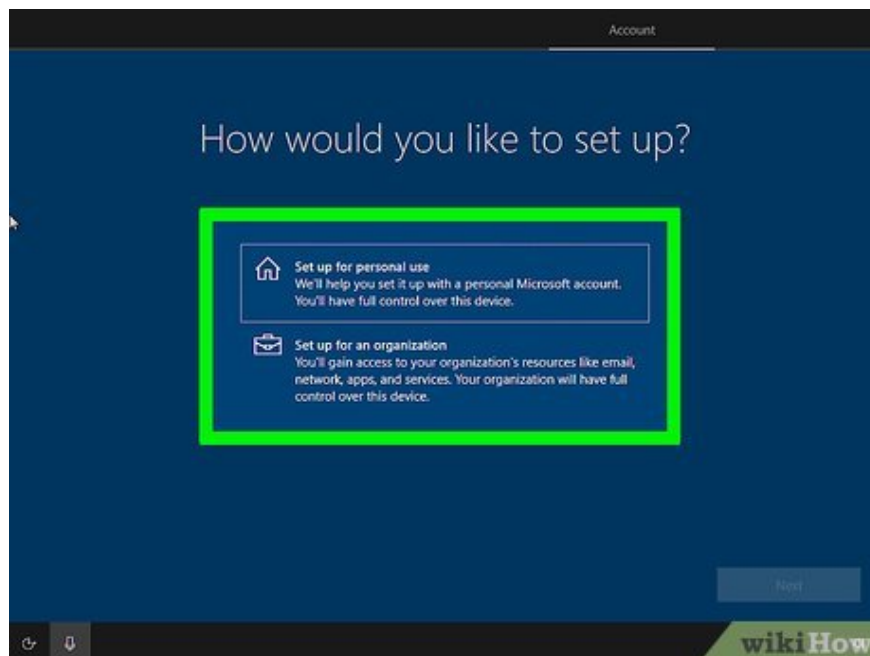
Verify the region and keyboard. When the computer restarts, Windows will ask you to verify the region and keyboard. If this information is correct, click **Yes** in the lower right corner. Otherwise, you will select the appropriate region and keyboard.

You can also choose another keyboard. If you want to choose another keyboard, click **Add Input** and select another keyboard. If not, select **Skip**.



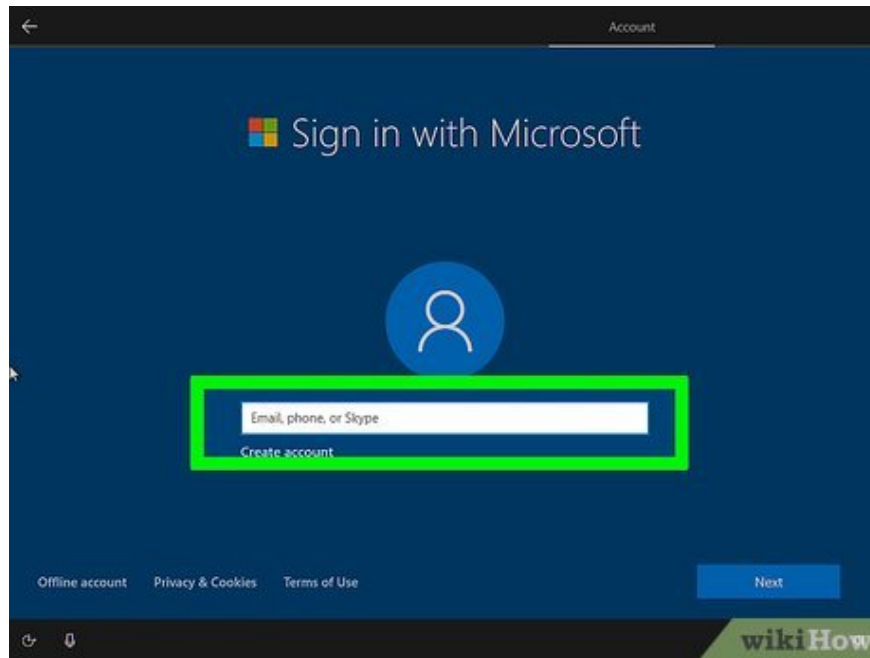
Connect to a Wi-Fi network. Select the Wi-Fi network and click **Connect** . Enter the Wi-Fi network password and click **Next** .

If you want to use a wired network connection, make sure your computer is connected to the modem (modem) with an Ethernet cable. Windows will automatically find a wired network connection.



Select Set up for personal use and click Next . This option allows you to sign in to your Microsoft account and use your computer for personal purposes.

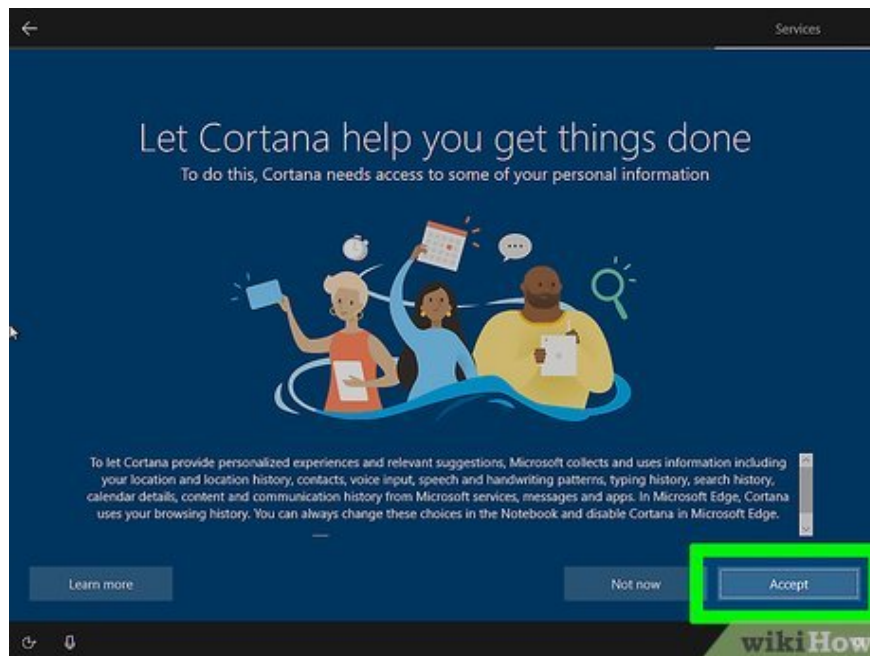
If you're setting up your computer for a business or organization, select **Set up for an organization** and click **Next** . You need technical support to set up Windows with your corporate email system.



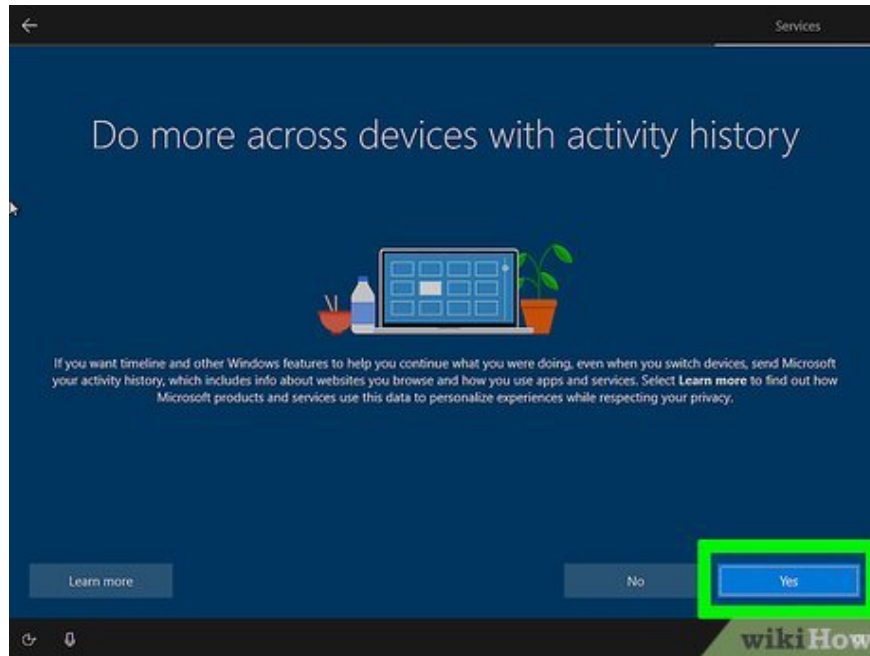
Sign in to Windows. If you already have a Microsoft account, you can sign in with your Microsoft account to import your digital license from your old Windows computer. Enter your email address, phone number or Skype username and password to sign in to your Microsoft account.

If you don't have a Microsoft account, you'll click **Create account** and follow the instructions to create a new Microsoft account.

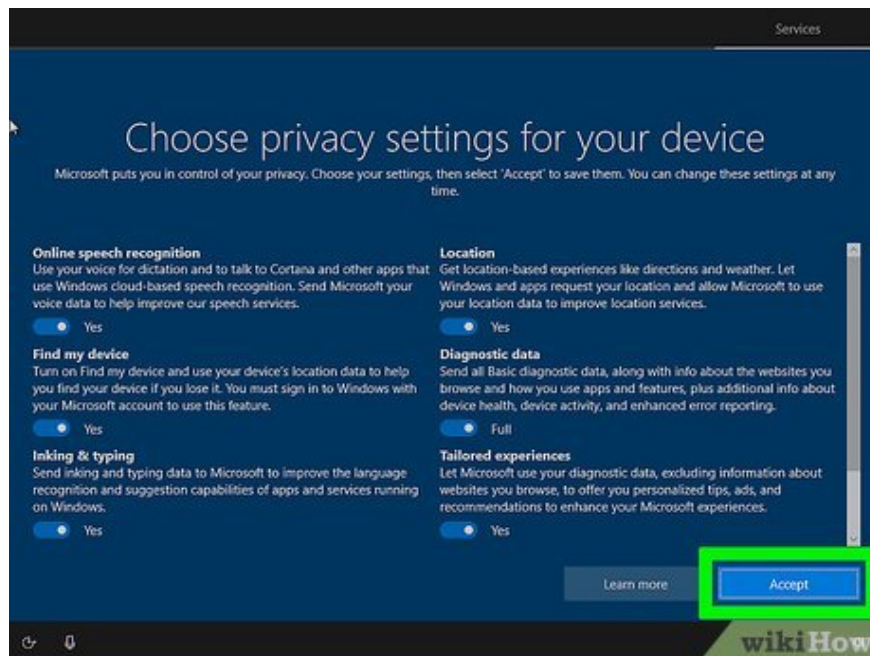
Or, you can click **Offline account** in the bottom right corner to create a new Windows local user account that isn't linked to a Microsoft account.



Click Accept to set up Cortana. This is a built-in voice assistant for Windows. If you want to set up Cortana, click **Accept** and follow the instructions. If you don't want to set up right now, you'll click **Decline** .

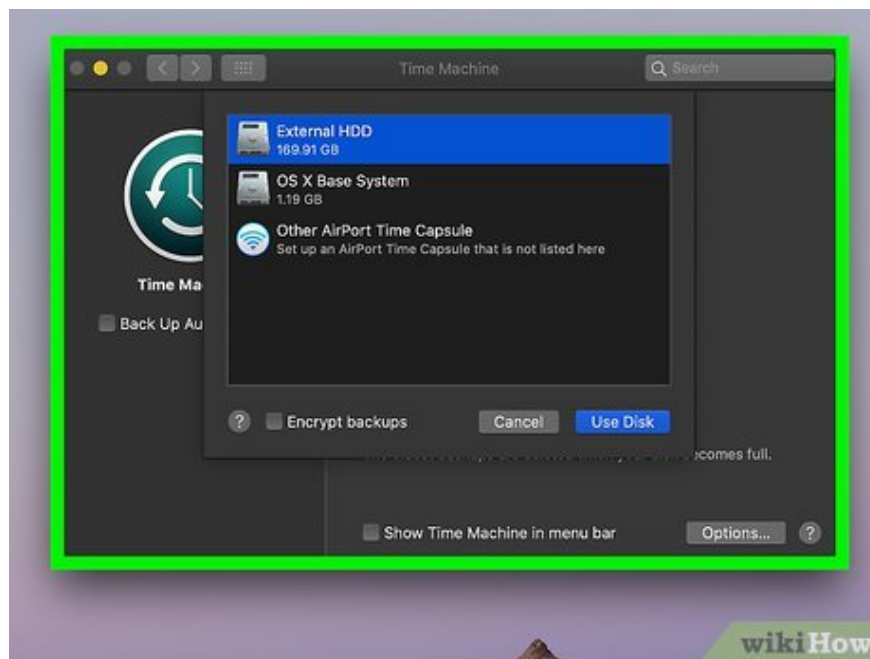


Click Yes and follow the instructions to set up Windows timeline. This feature allows you to continue what you were doing on another Windows device. Click **Yes** and follow the instructions to set up the feature. On the contrary, if you do not want to use this feature, you will select **No** to move to the next step.

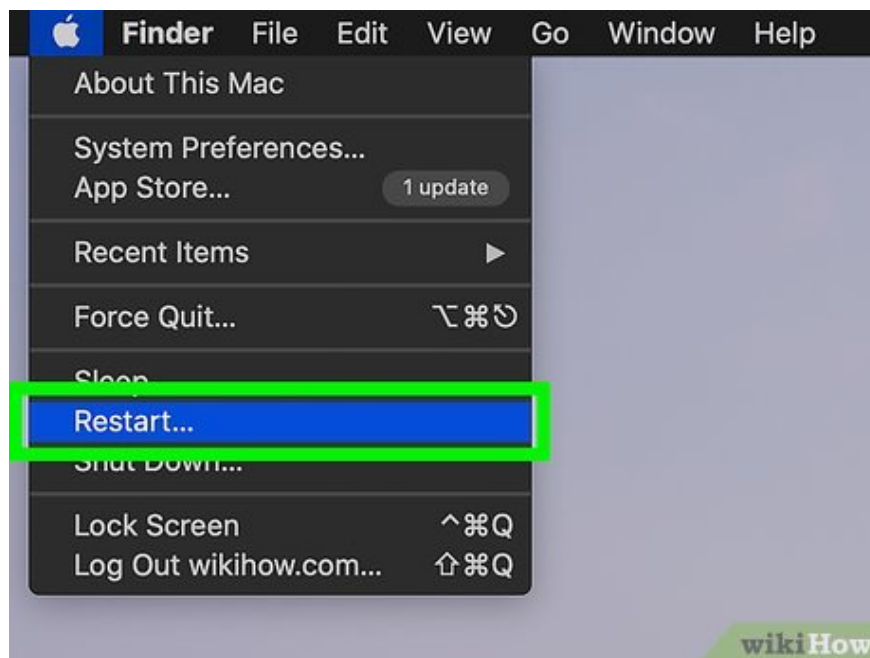


Select privacy settings and click Accept . By default, Windows turns on GPS, voice recognition, diagnostics, device discovery, writing/drawing, and typing to help Microsoft improve language recognition and related advertising. Click the slider button to turn off the features you don't want to use, then click **Accept** . Windows will further set up and display the computer's main screen.

Install MacOS



Backup files. It's a good idea to back up all files and data you need to keep before installing or reinstalling macOS on your Mac computer. You can back up data to iCloud, Google Drive, Dropbox, or an external hard drive or USB.



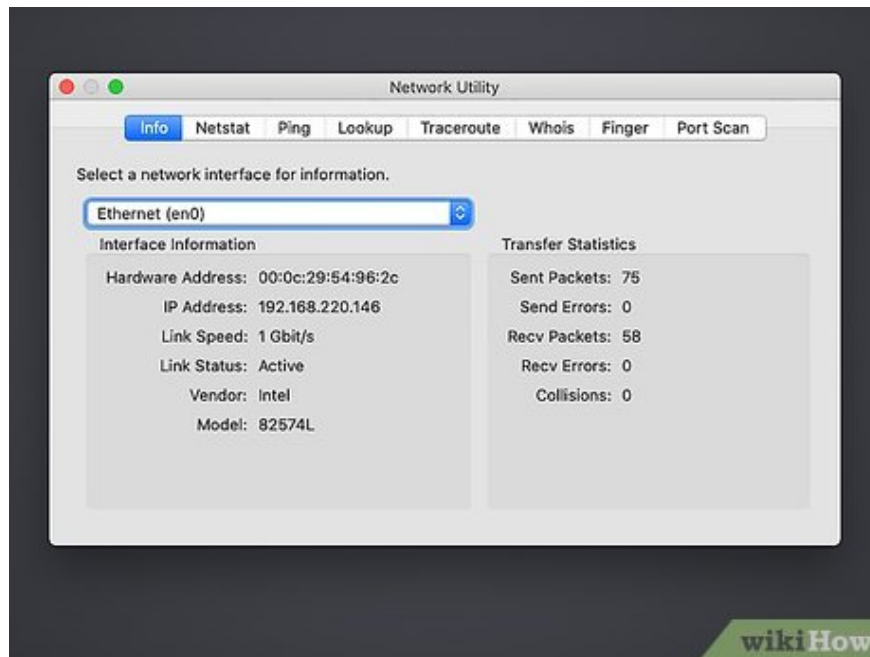
Restart your Mac computer. To do this, you'll click the Apple logo in the top right corner and click **Restart** .

If you haven't turned on your Mac yet, just press the power button to start it.

You need Internet access to reinstall macOS on Mac.

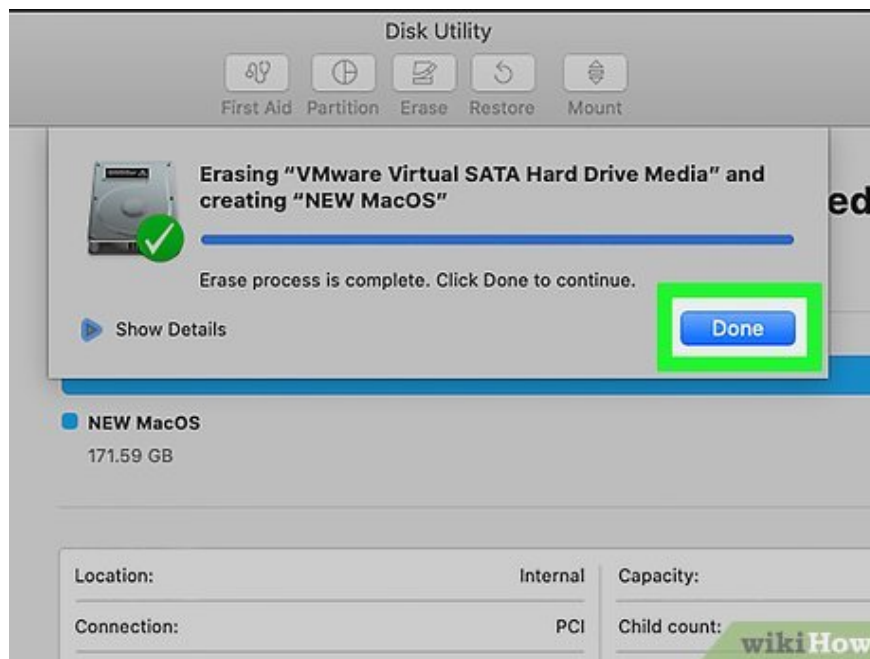


Press and hold ? Command+R immediately. You need to do this before your Mac plays the startup sound. Continue holding the keys until the Mac's recovery screen appears.



Connect to a wireless network. To connect to a wireless network, you need to click on the dot and three curved lines icon in the upper right corner. Click to select the wireless network, then enter the password and click **Join** .

If you want to use a wired network connection, make sure your computer is connected to the modem (modem) with an Ethernet cable.



Reformat the hard drive (optional). Depending on your needs, you may need to erase all data on the hard drive where macOS is installed and perform a fresh installation. After deleting a hard drive, you cannot restore the data on it. Make sure you back up important data before erasing your hard drive. If you don't want to erase your hard drive, you can skip this step to reinstall macOS with all the data currently on the hard drive. Follow these steps to reformat your hard drive:

Click **Disk Utility** and click **Continue** .

Click on the hard drive to erase in the right pane. Remember to choose the correct drive.

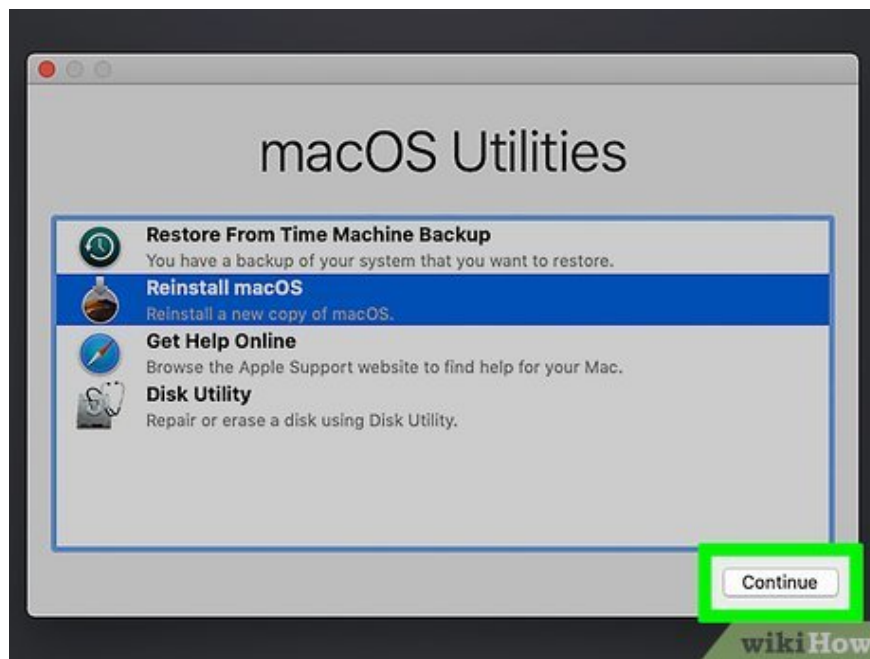
Click **Erase** at the top.

Enter a new name for the hard drive (optional).

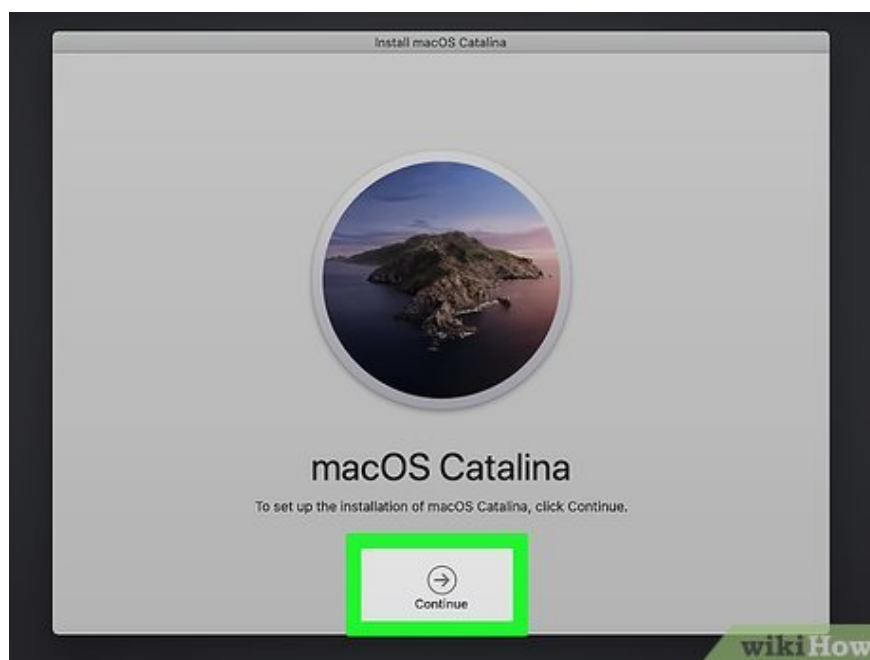
Select "Mac OS Extended (Journaled)" or "APFS" format.

Click **Erase** .

Close the Disk Utility window.



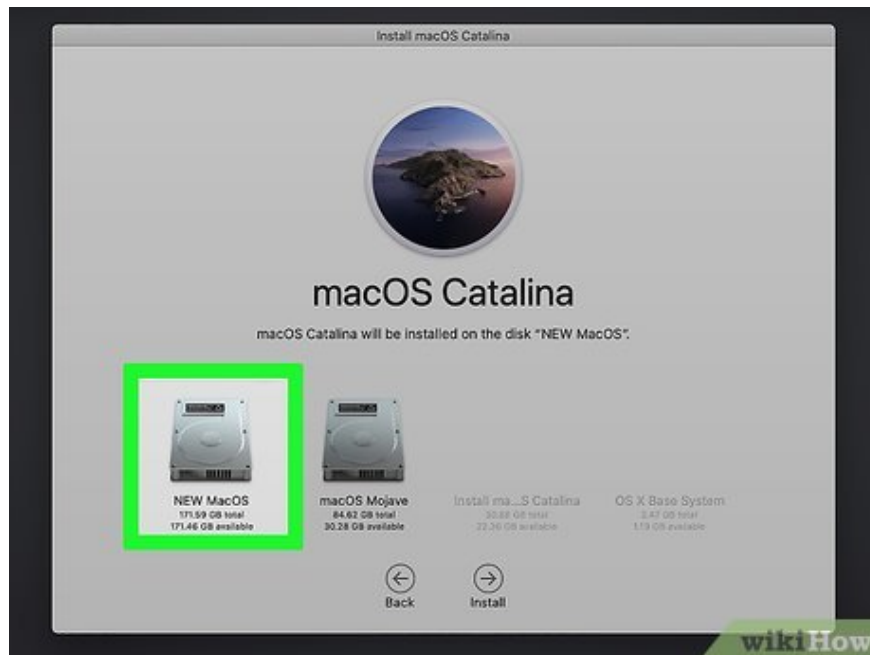
Select Reinstall macOS and click Continue . This begins the process of reinstalling macOS.



Click Continue . It's the arrow icon in the bottom middle of the screen.

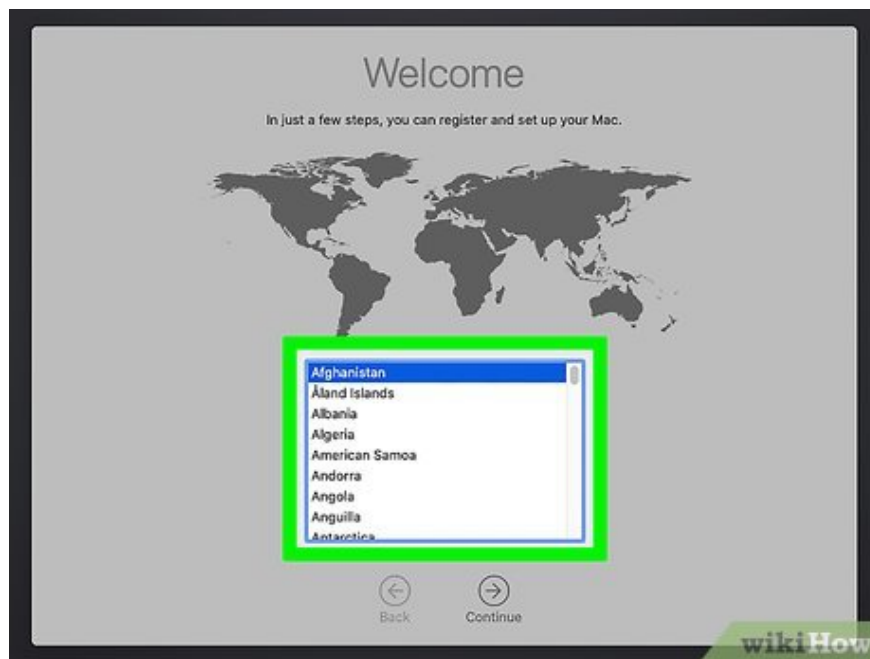


Agree to the terms and license agreement. To agree to the terms and license agreement, you will read the content and click **Agree** below. Click **Agree** again in the displayed message.



Select the hard drive where you want to install macOS and click Install . The process of installing macOS on your hard drive will begin immediately after this operation. Installation time will depend on your Mac's hard drive and internet speed. Your Mac will restart when the installation is complete.

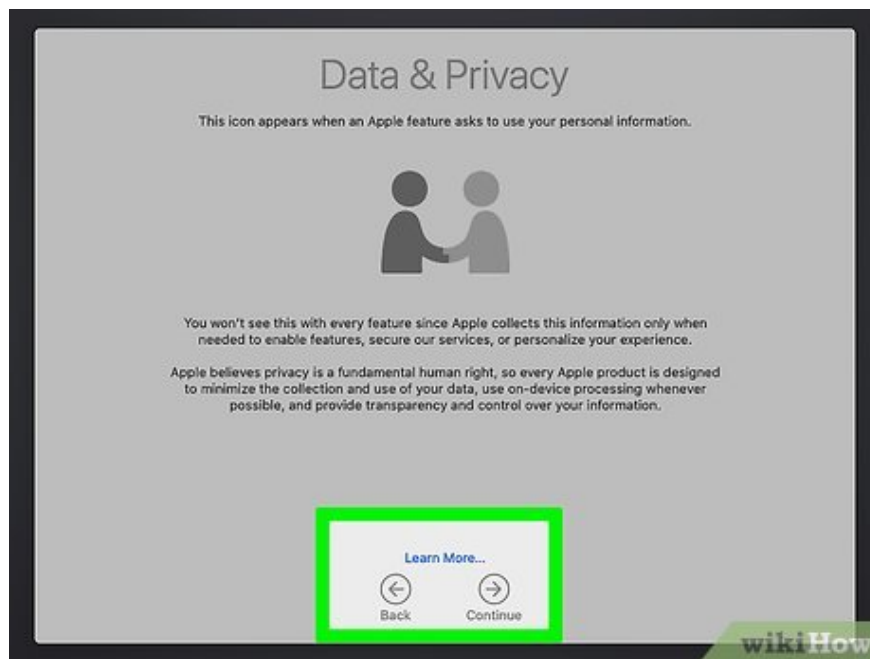
Set up MacOS



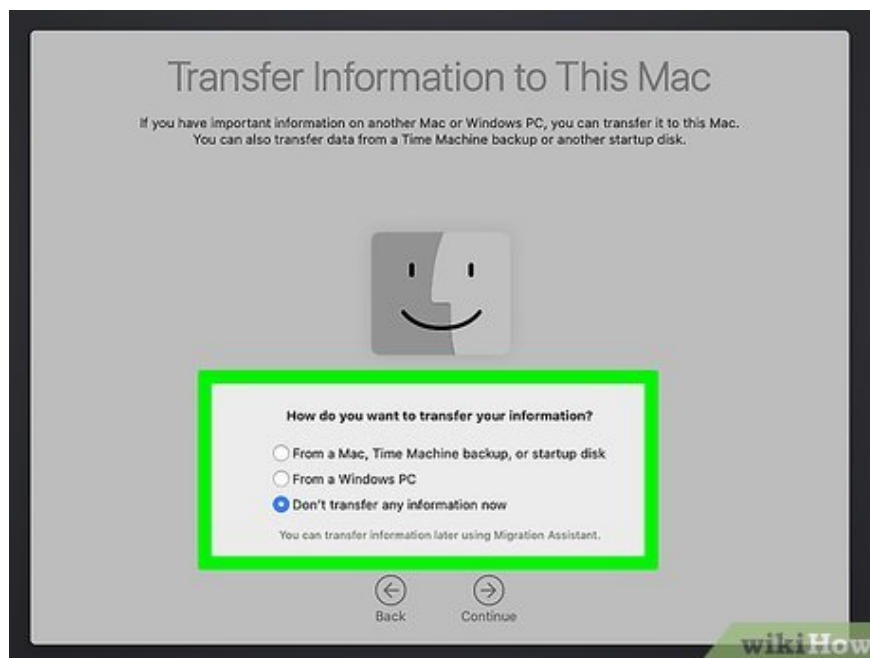
Select your country and click Continue . Use the menu to select your language and click **Continue** at the bottom of the screen.



Login to Wi-Fi. To log in to Wi-Fi, you need to select the wireless network and enter the password, then click **Continue** at the bottom of the screen.



Click Continue . This screen provides a little information about privacy and data. You can read the content for better understanding or click **Continue** to move to the next step.



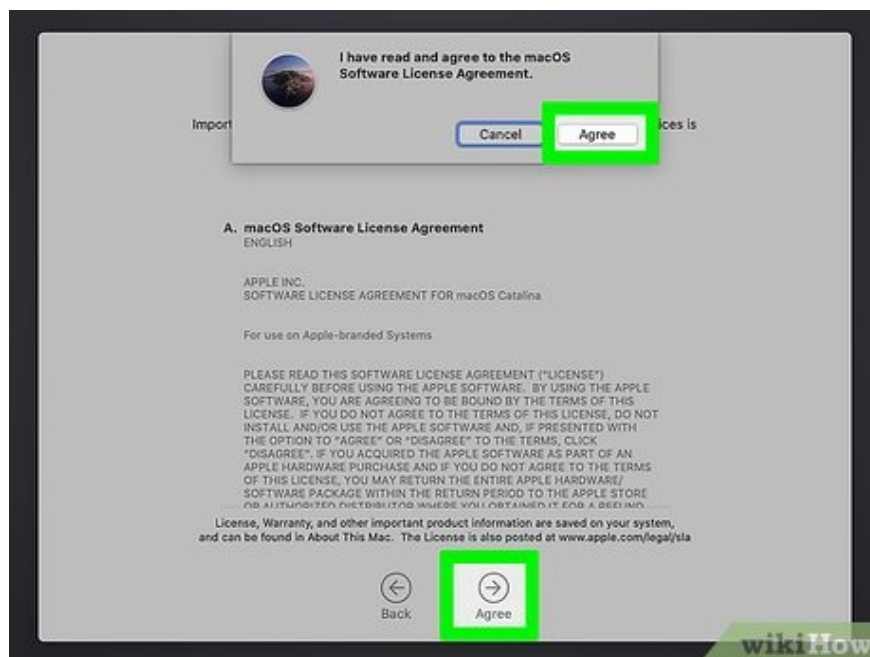
Choose a method to transfer data to your Mac and click Continue . If you have important data to transfer from another Mac or Time Machine, or Windows computer to your Mac, select the appropriate option and click **Continue** . Otherwise, you will select "Don't transfer any information now" and click **Continue** .



Sign in to Apple ID. To sign in to your Apple ID, you'll enter your Apple ID registered email address and click **Continue** , then enter your password and click **Continue** .

If you don't have an Apple ID, you can click **Create New Apple ID** and follow the instructions to create a new Apple ID.

Or, you can click **Set up later** and click **Skip** to temporarily skip this step.



Agree to the terms and conditions. To agree to the terms and conditions, read the content on the page and click **Agree** below. Click **Agree** again in the displayed notification window.



Create a new user account. You need to create a user account to log in to your Mac. Follow these steps to create a new user account.

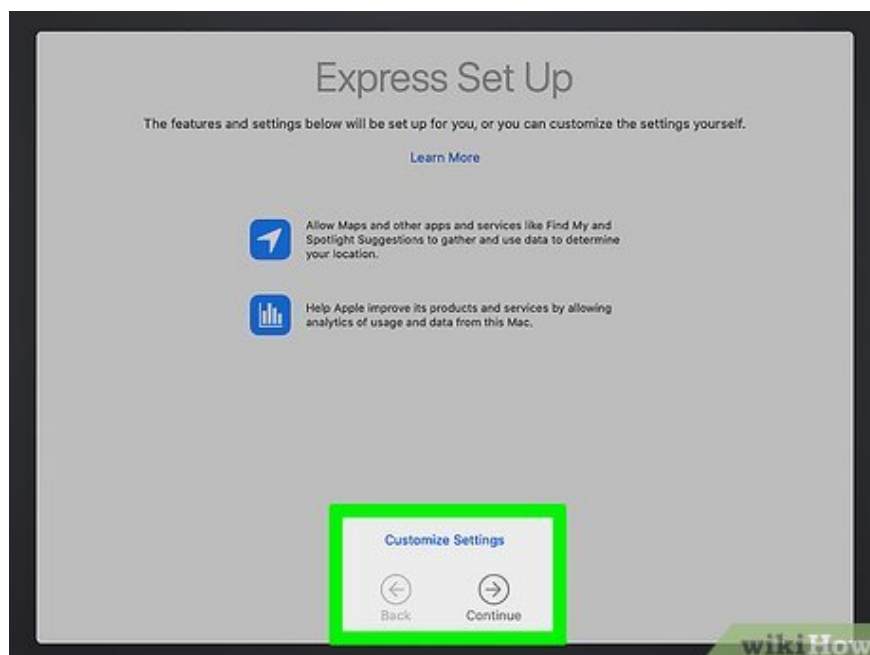
Enter the full name in the first two fields above.

Enter the user account name.

Enter the password in the next two fields.

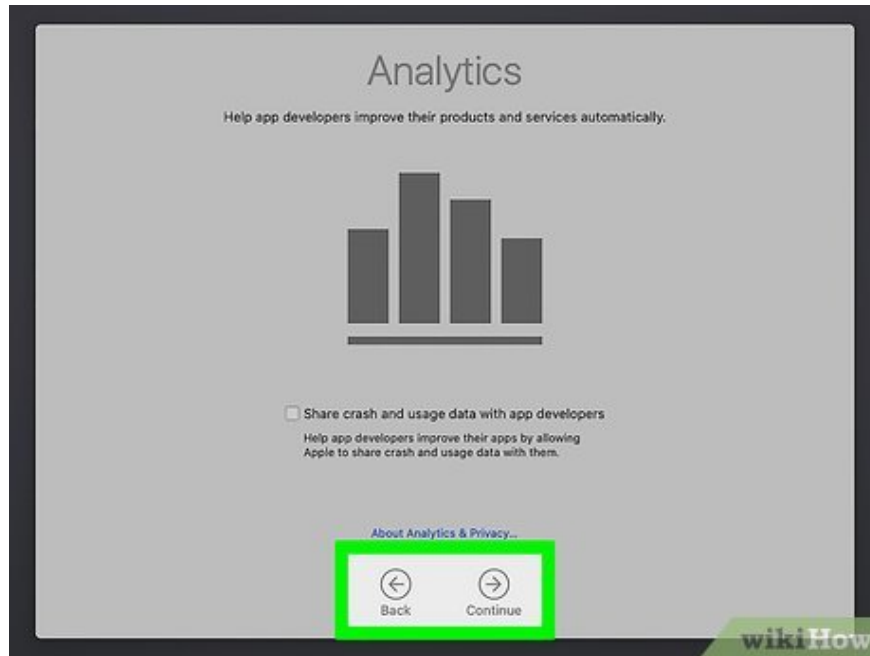
Enter a password hint.

Click **Continue** .

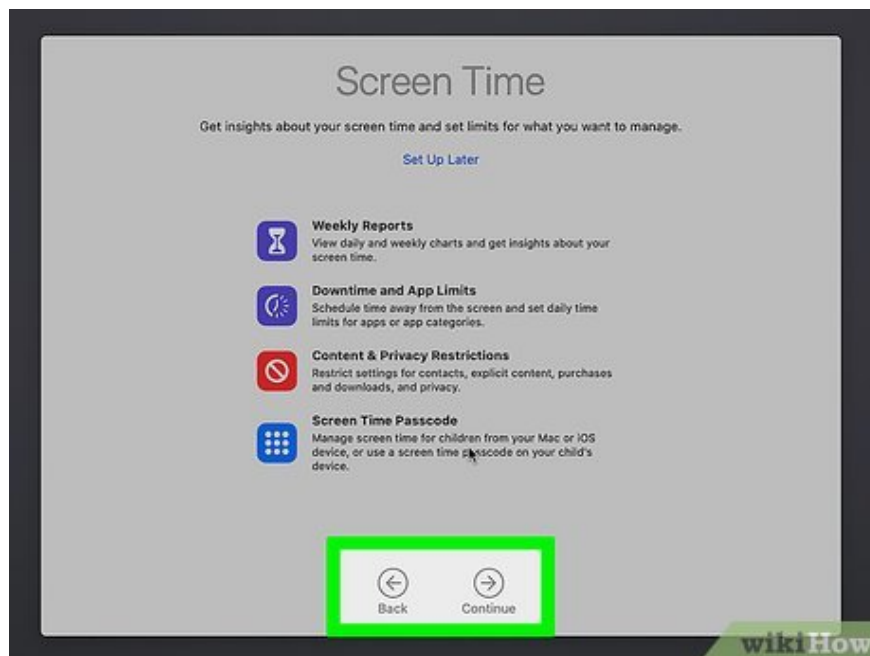


Confirm setup and click Continue . Check the information on the Express Setup screen to make sure everything is okay and click **Continue** to move to the next step.

If you want to set up options, click **Custom setup** at the bottom of the screen.

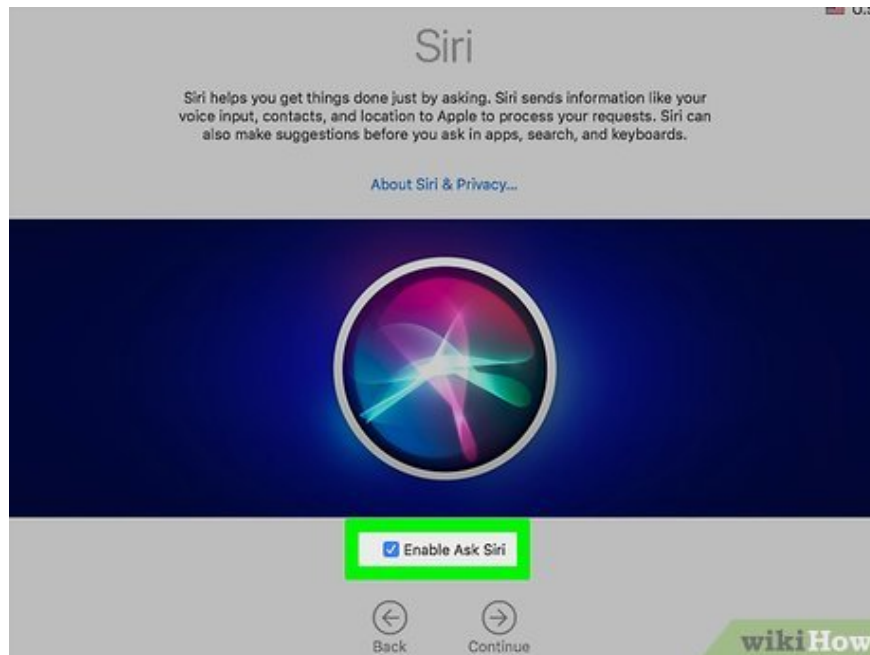


Decide whether you want to share metrics with the app publisher and click Continue . If you want to share metrics with app publishers to help them improve their products, click the checkbox next to "Share crash and usage data with app developers". app publisher) to move to the next step.



Set up screen usage settings (optional). Screen usage settings let you set limits on the amount of time users are allowed to use the computer, set content limits, and receive usage reports. If you want to set up these features,

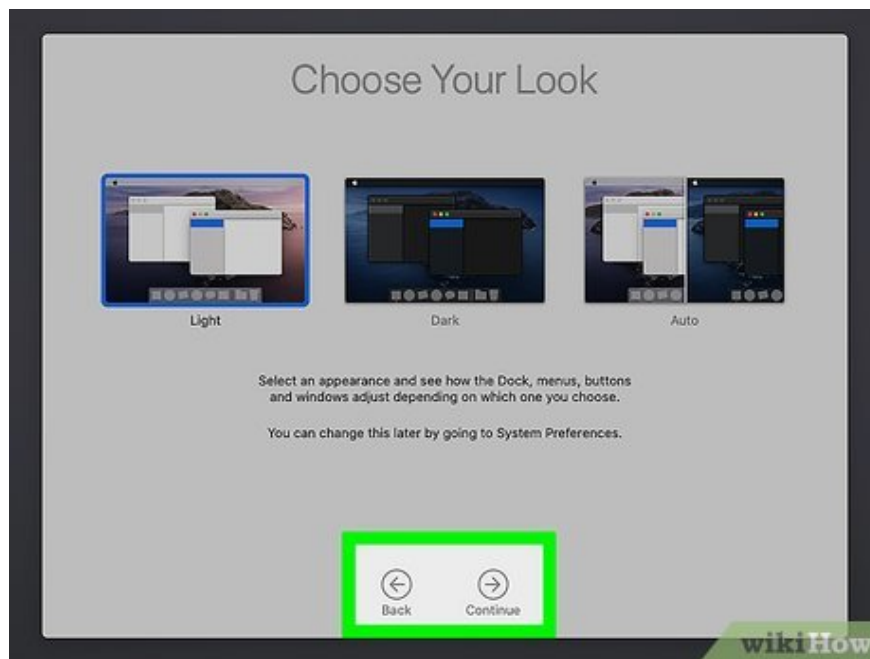
click the on-screen options and follow the instructions to set up your screen usage settings. Click **Continue** when you're ready to move on to the next step.



Turn on Siri. This is Apple's voice assistant. If you want to set up Siri, click the box next to "Enable Ask Siri" and click **Continue** .



Help improve Siri (optional). If you have recordings that can be used to improve Siri, select "Share audio recordings." If not, just click "Not now". Click **Continue** to move to the next step.



Select the interface and click Continue . You will click on one of the three interface options, then click **Continue** to move to the next step. The macOS operating system takes a few minutes to set up and you will be taken to the login screen to your Mac computer.

You finished reading the article "**How to Install an Operating System on a New Computer**" edited by the [TipsMake](#) team. We hope this article has provided you with many useful tech tips and tricks. You can search for similar articles on tips and guides. Thank you for reading and for following us regularly.