

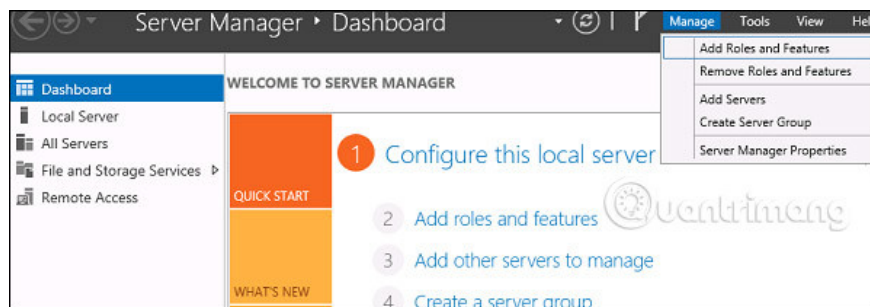
How to install Active Directory in Windows Server 2012

In this article, we will learn how to install Active Directory in Windows Server 2012 R2.

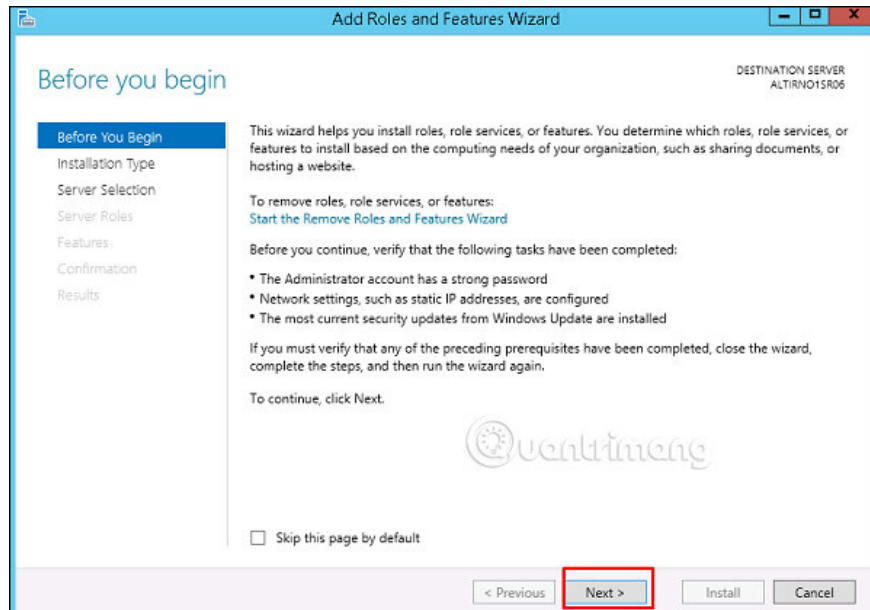
In this article, we will learn how to install Active Directory in Windows Server 2012 R2. Many people have worked with previous versions, running DCPROMO.EXE to install, but in 2012, Microsoft advises you not to use it anymore.

To continue the installation, follow the steps below.

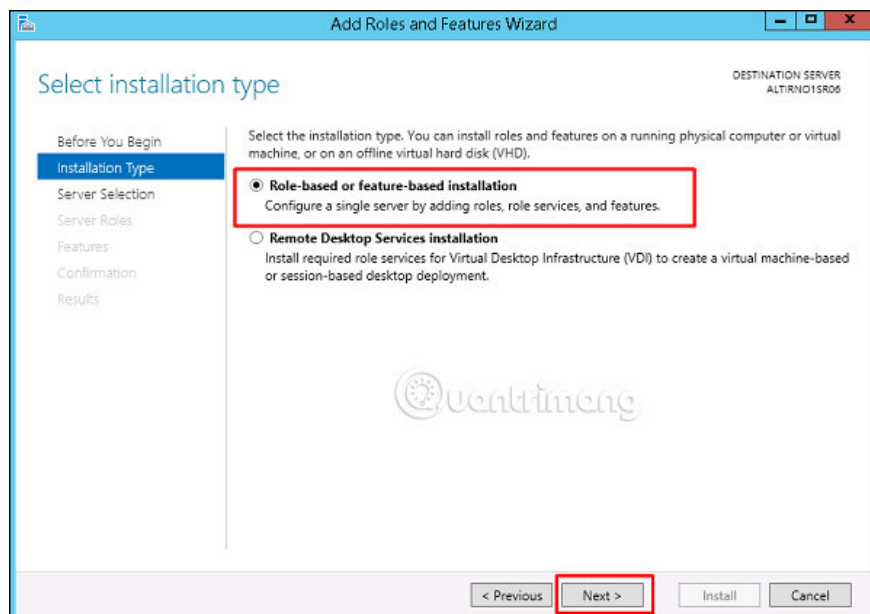
Step 1 - Go to ' Server Manager ' ? Manage ? Add Roles and Feature .



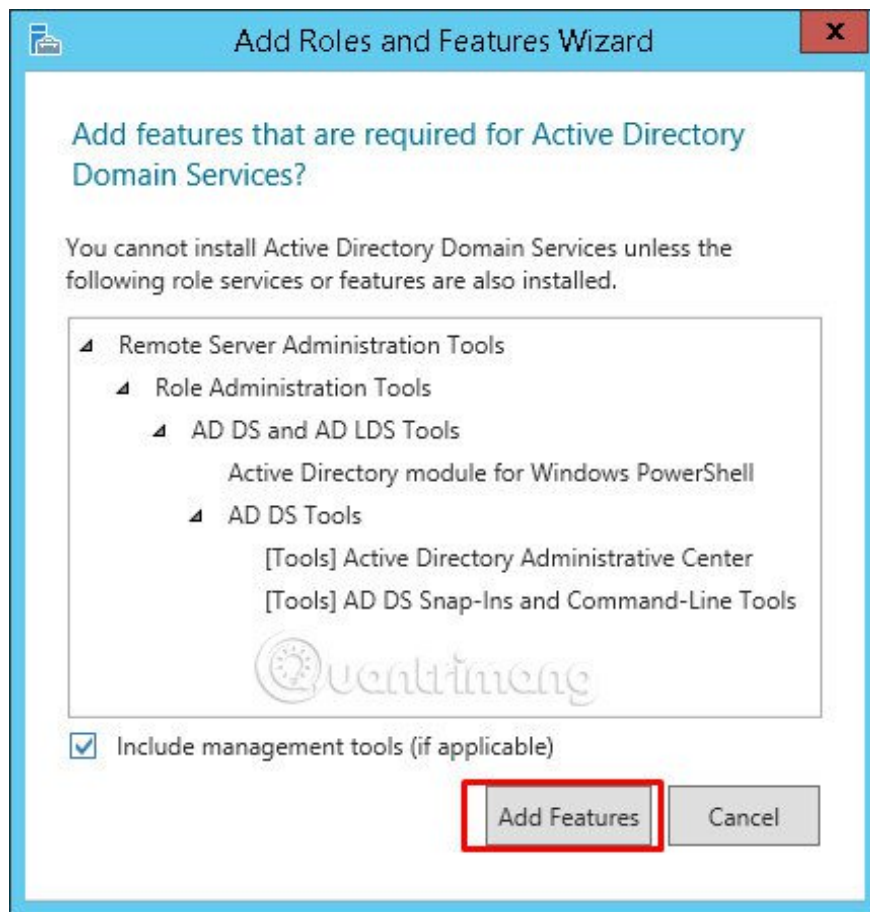
Step 2 - Click the Next button.



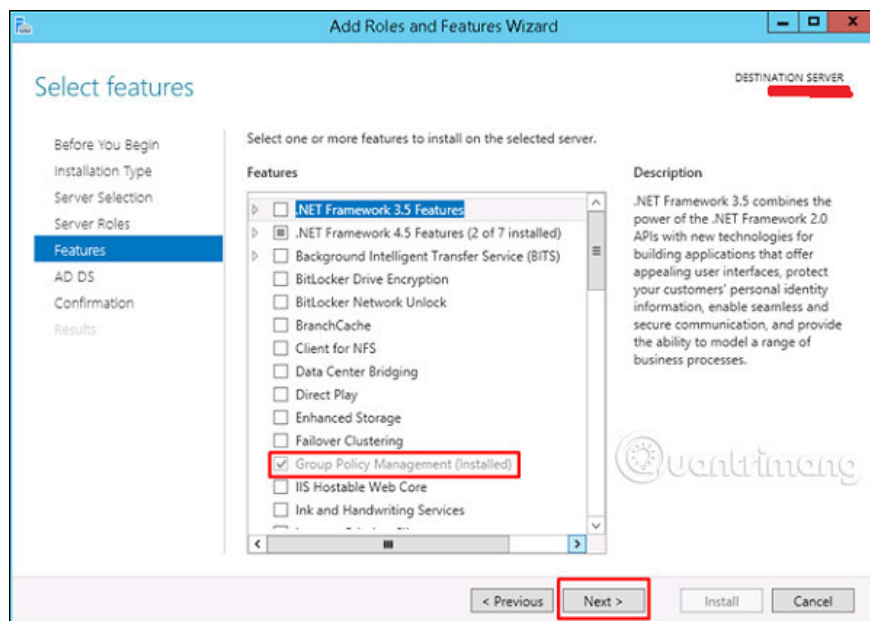
Step 3 - As this example is currently installing AAD, you will select '**Role-based or feature based Installation**' ? **Next** .



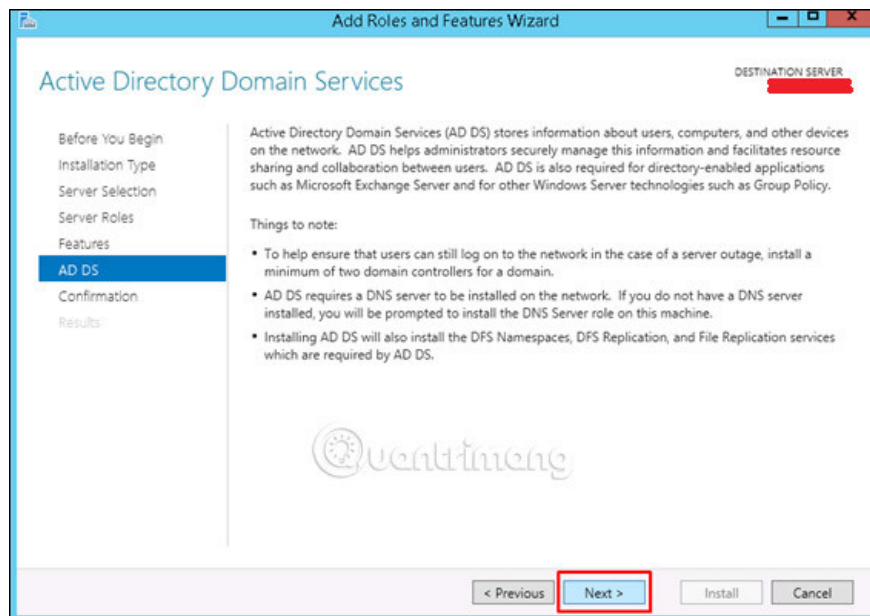
Step 4 - Click "**Select a server from the server pool**", in case it is installed locally.



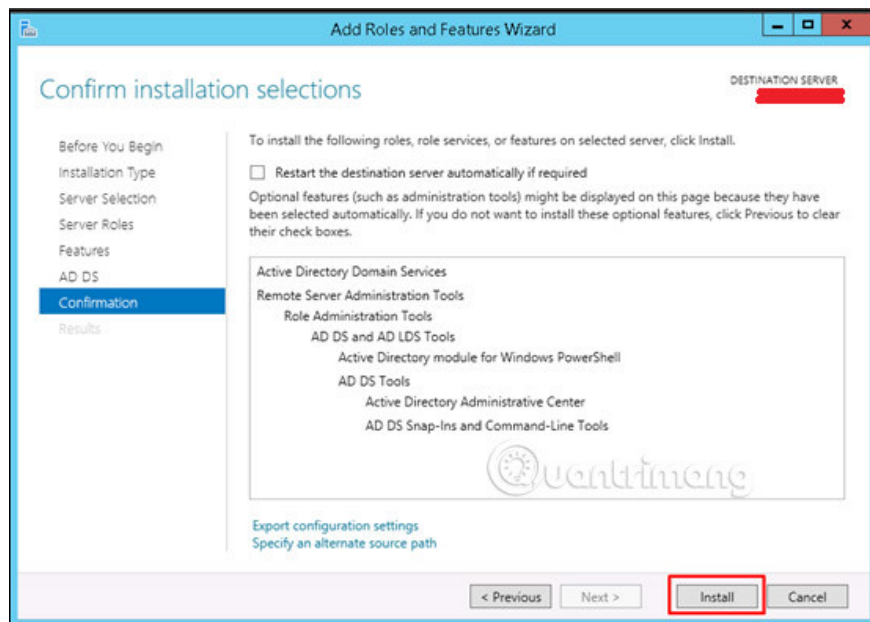
Step 7 - Check ' Group Policy Management ' ? Next .



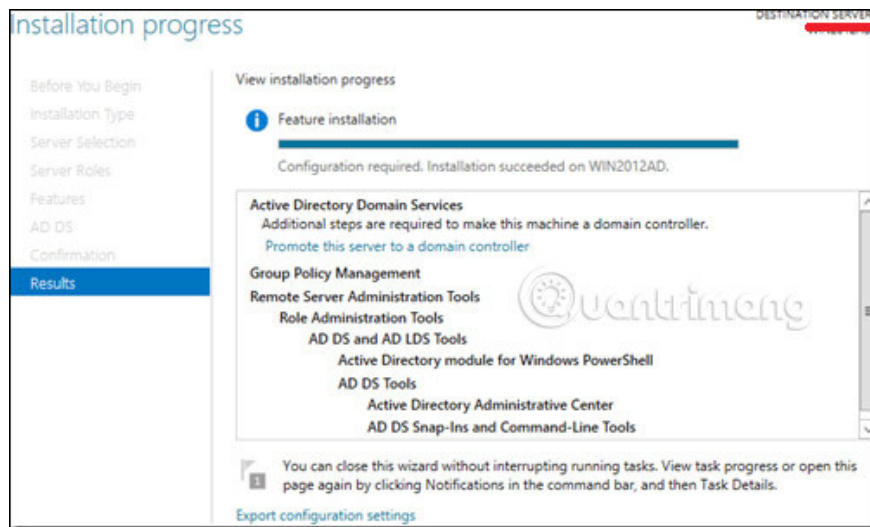
Step 8 - Click the " Next " button.



Step 9 - Click ' Install ' .

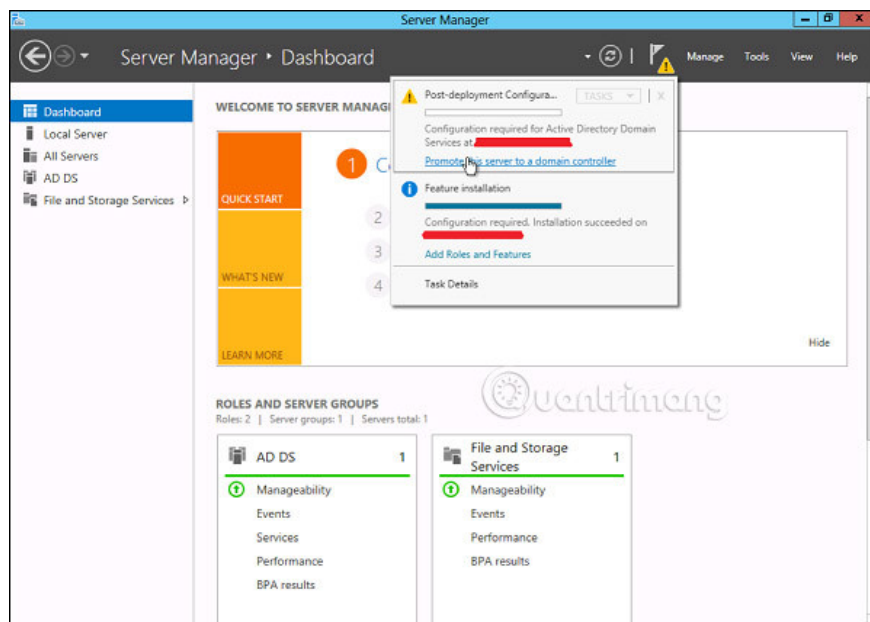


The installation screen will appear now and you must wait until the installation process is complete.

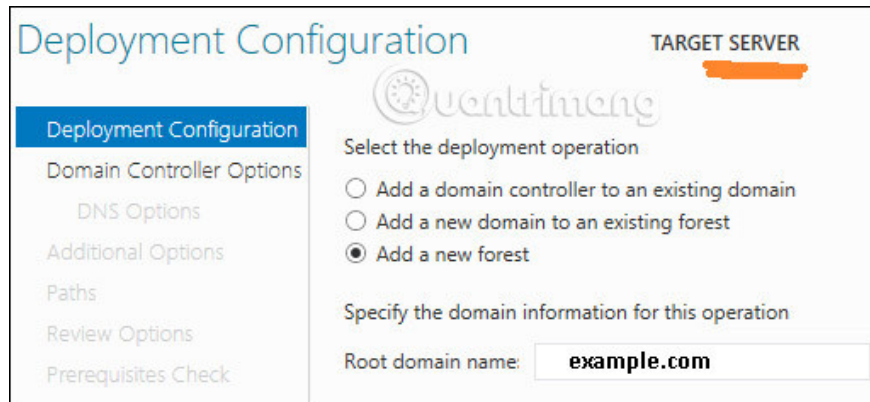


Now that the DC installation is complete, you must configure it for your server.

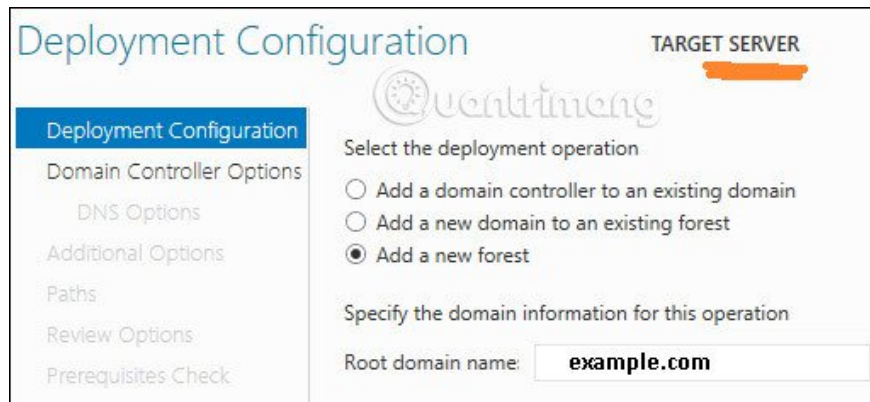
Step 10 - Click on ' **Server Manager** ' ? Open the **Notifications Pane** by selecting the **Notifications** icon at the top of the Server Manager. From the message associated with configuring AD DS (Active Directory Domain Services), click **Promote this server to a domain controller** .



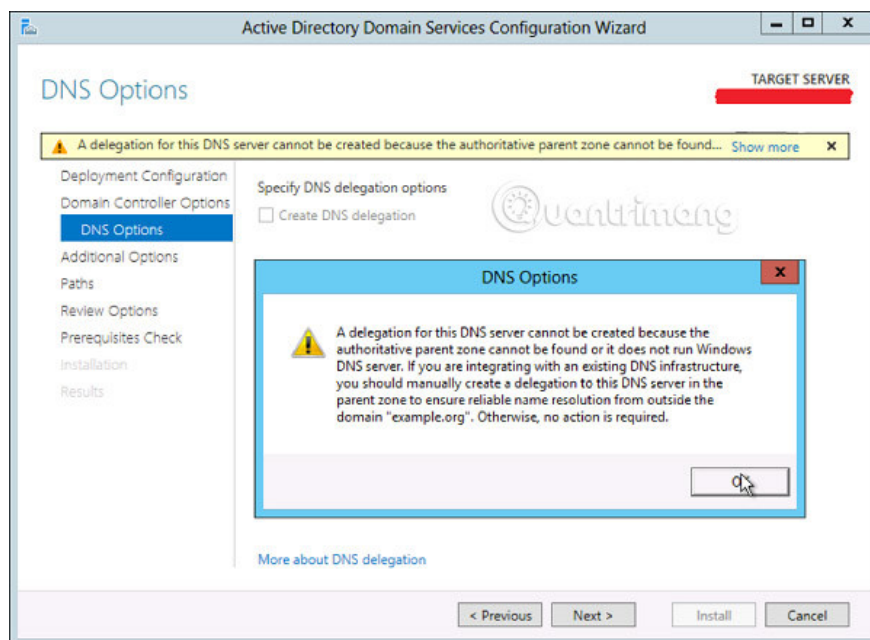
Step 11 - Click ' **Add a new forest** ' ? Insert your **root domain name** in the **Root domain name field** . In the case of this example, the root domain name will be named " **example.com** " .



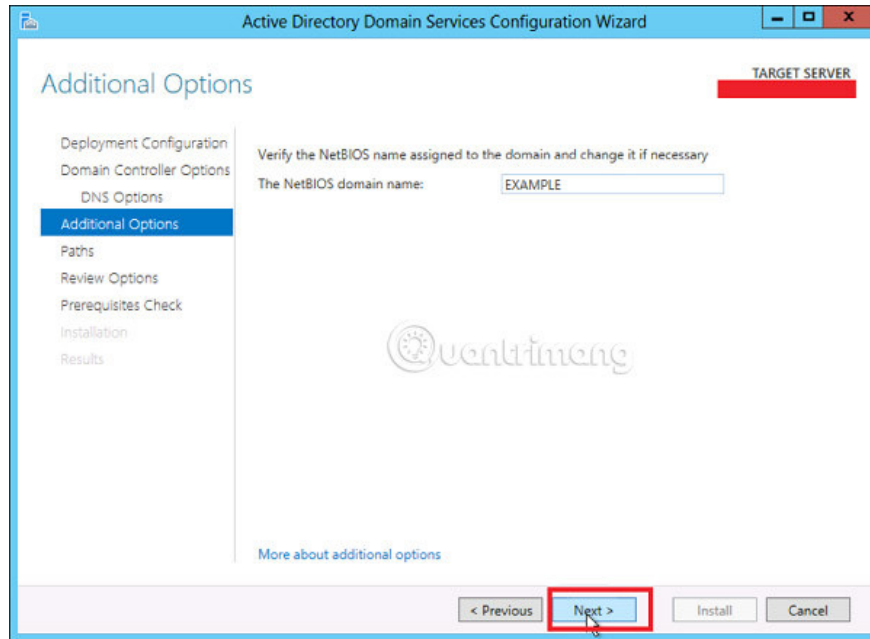
Step 12 - Select a **Domain** and **Forest functional level** . Once selected, enter the **DSRM password** in the password fields provided. DSRM password is used when starting the **Domain Controller** in recovery mode.



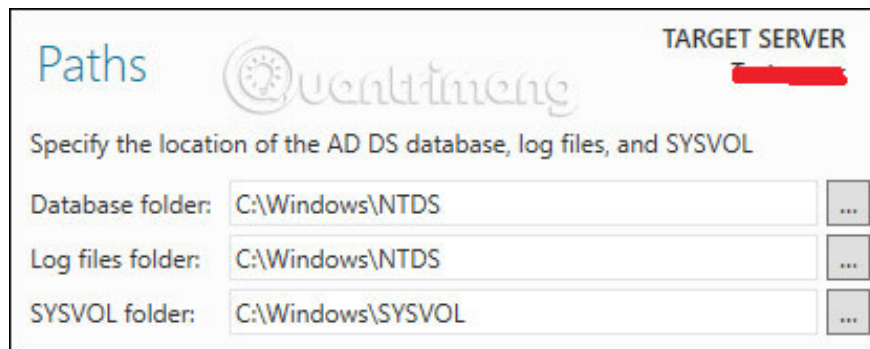
Step 13 - In the next screen that appears, there is a warning on the **DNS Options** tab, click **OK** and then select **Next** .



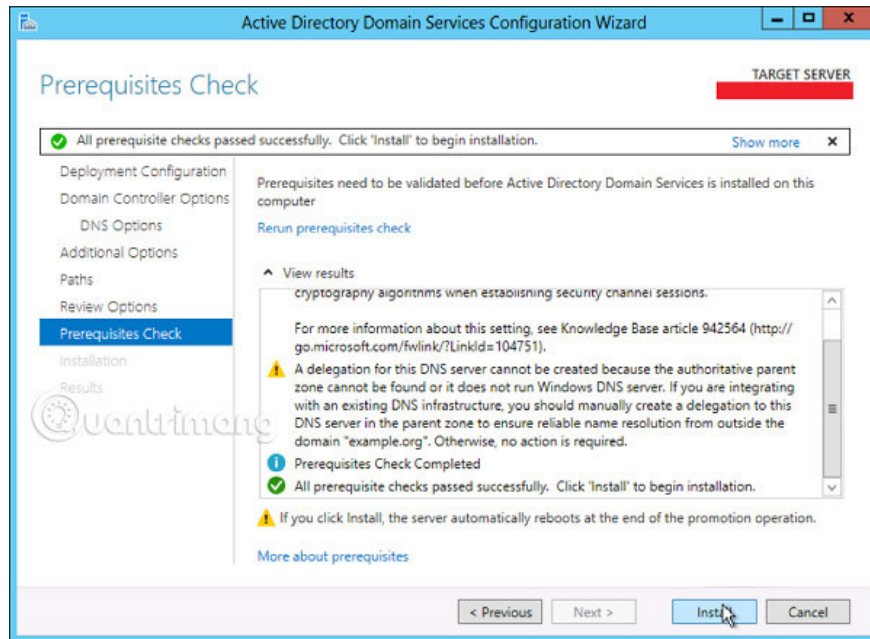
Step 14 - Enter the **NETBIOS** name and click ' **Next** '.



Step 15 - Select the location of the **SYSVOL** file, **Log** file and **Database** folders, then click **Next** .



Step 16 - Click " **Install** " and wait until it finishes. The server will restart several times.



See more:

1. Instructions for creating a Domain Controller - DC on Windows Server 2012
2. Instructions for setting F8 key to start Windows 8 in Safe Mode
3. Trick to start and shut down Windows Server 2012 computer in a blink of an eye

You finished reading the article "**How to install Active Directory in Windows Server 2012**" edited by the [TipsMake](#) team. We hope this article has provided you with many useful tech tips and tricks. You can search for similar articles on tips and guides. Thank you for reading and for following us regularly.