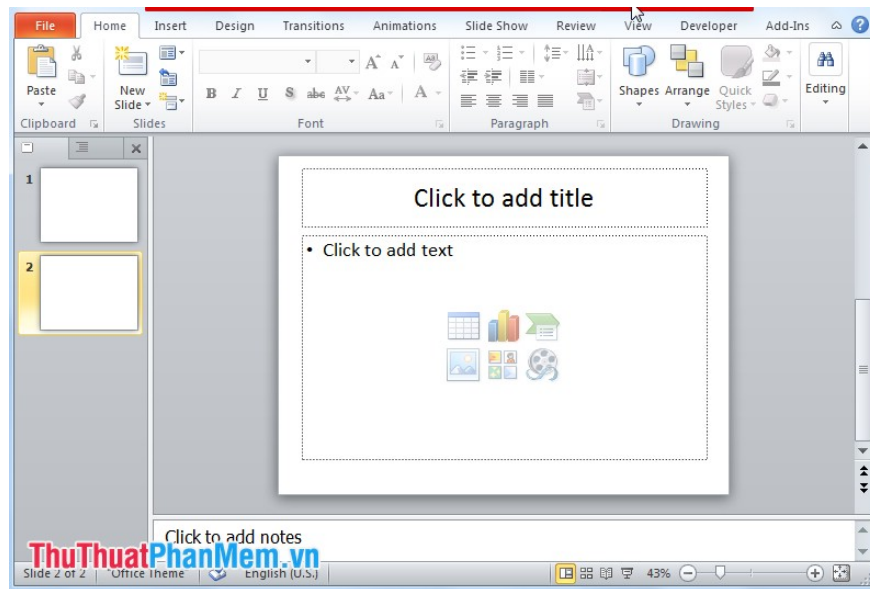


How to insert videos into PowerPoint

Show you how to insert videos into PowerPoint so you can insert videos from your computer into PowerPoint.

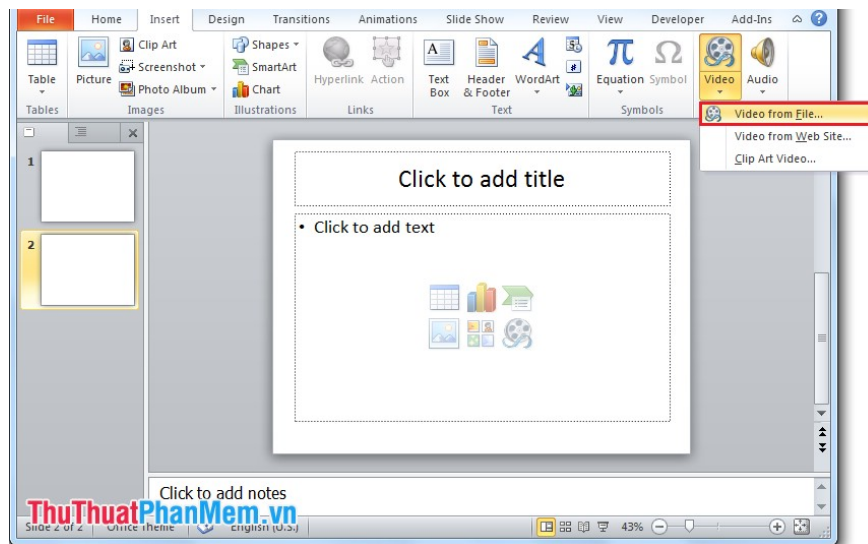
PowerPoint presentations are mostly text and images, but there is a lot of content that needs to be illustrated with videos to increase realism and persuasion. Below I will show you how to insert videos into PowerPoint so you can insert videos from your computer to PowerPoint.

Step 1: Open PowerPoint, you can create a new slide to hold the video.

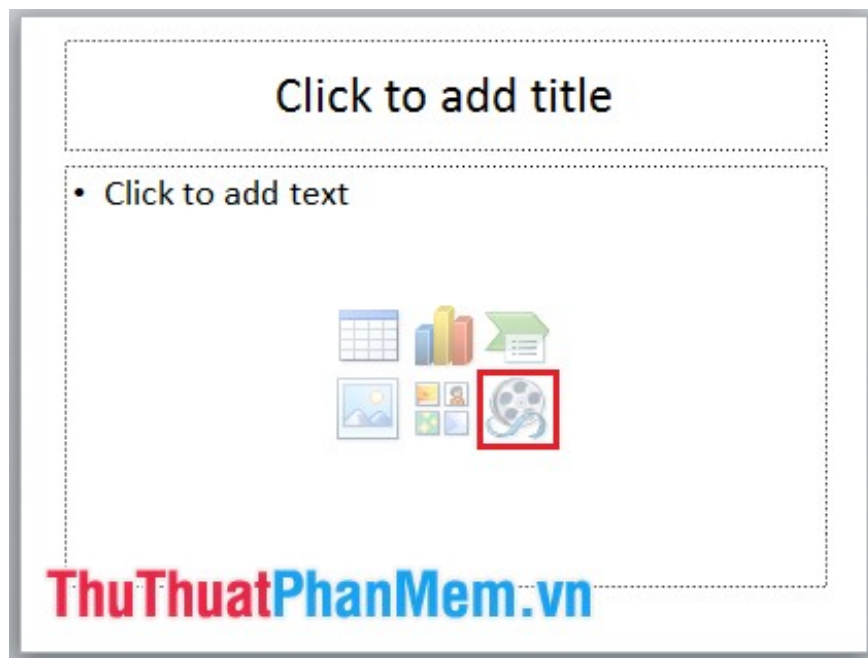


Step 2: Select **Insert -> Video -> Video from file** .

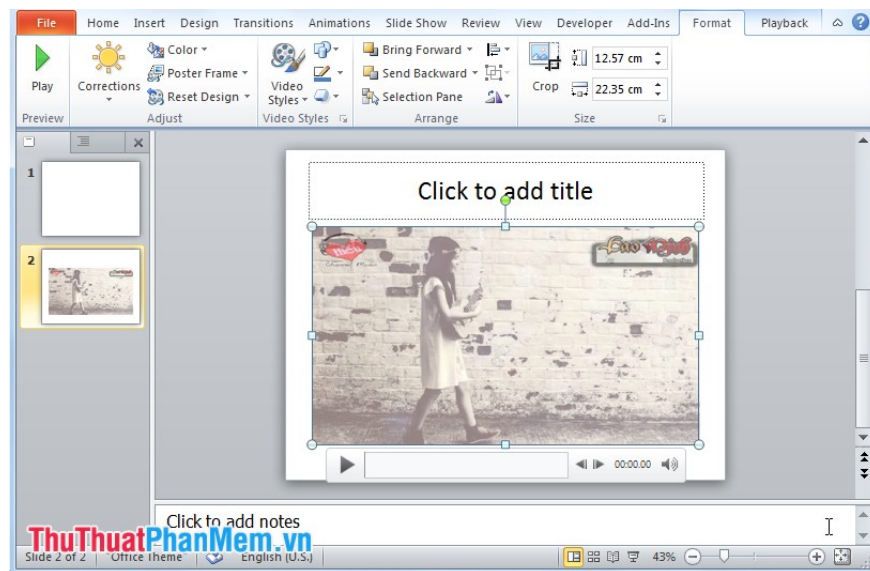
(For different versions of PowerPoint, the video icon or the location of the video button is different but are in the Insert section).



Or select the Video icon in the new slide:



The Insert video dialog box appears, select the video to insert and then click Insert to insert. Insert result:



You can move the location for video on Slide by clicking on the video, hold the mouse and drag the video to the desired position.

With just a few basic steps, you can insert videos into your PowerPoint slides to make PowerPoint more vivid and intuitive. Thank you for following the article!

You finished reading the article "**How to insert videos into PowerPoint**" edited by the [TipsMake](#) team. We hope this article has provided you with many useful tech tips and tricks. You can search for similar articles on tips and guides. Thank you for reading and for following us regularly.