

How to insert text into pictures with Paint on Windows

How to insert text into pictures with Paint on Windows On Windows has built-in Paint image editing tool. Paint will help you add text to the image quickly and simply.

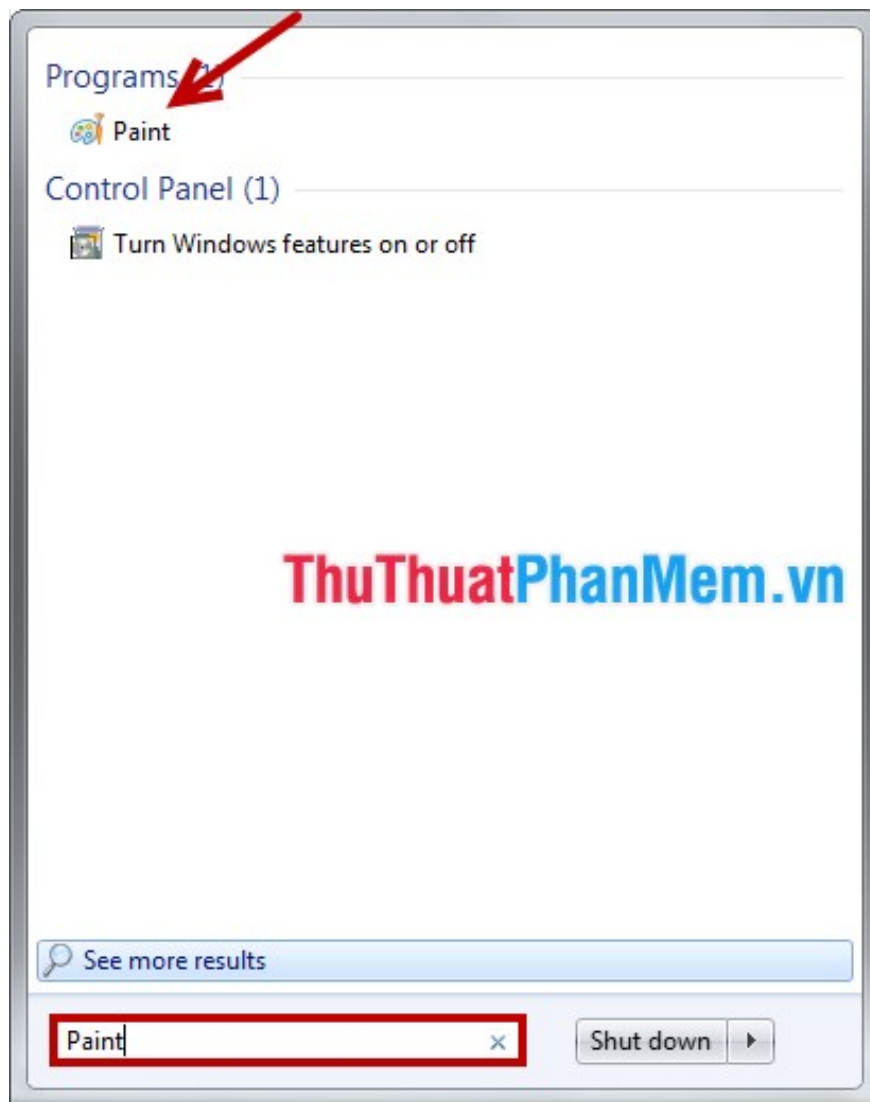
Are you looking for a photo editing software to add text to images. If you are using Windows, you do not need to download and install any software, because on Windows has built-in Paint image editing tool. Paint will help you add text to the image quickly and simply.



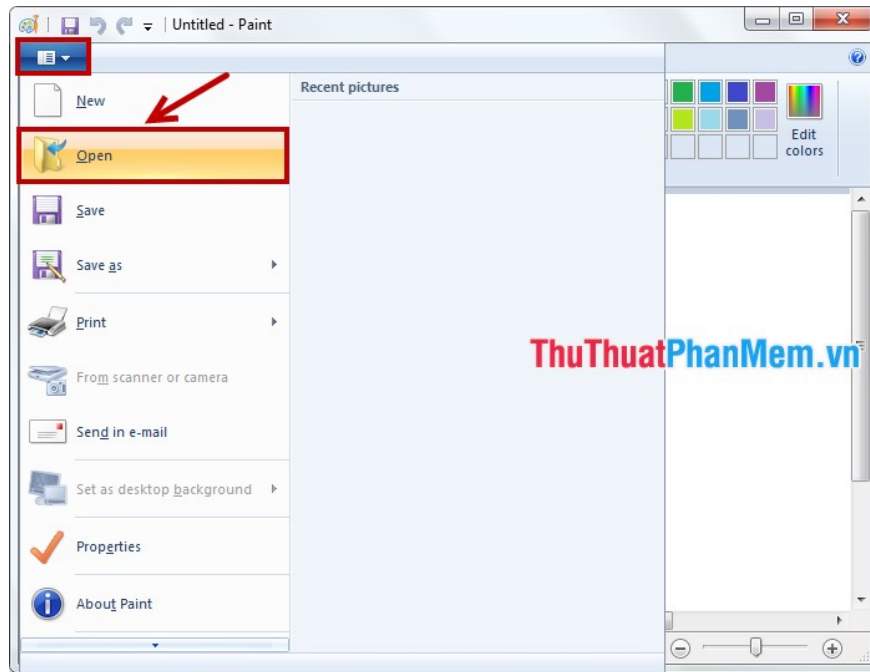
The following article shows you how to insert text into images using Paint on Windows.

Step 1: Open the image on the Paint tool.

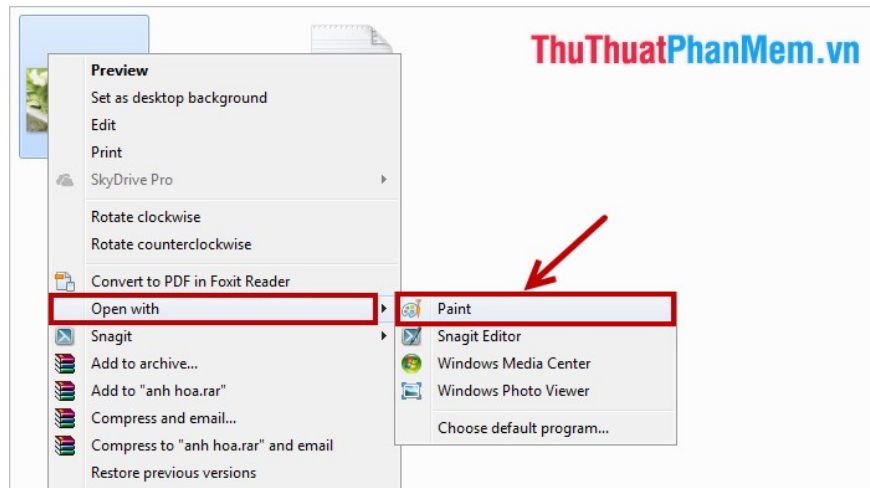
Option 1: Select the **Start Menu** , enter the keyword *Paint* in the **Search programs and files box** , select **Paint** in the search results.



On the Paint interface, select the Paint icon -> **Open** (**Ctrl + O** key combination), appear the **Open** dialog box, select the image to insert text.

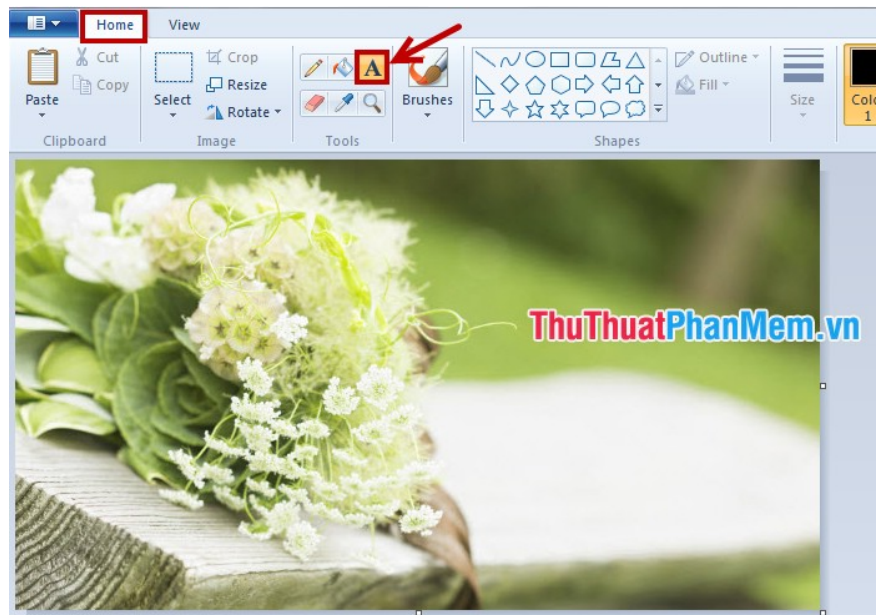


Method 2: Select the image to insert text and right-click and select **Open With -> Paint** .

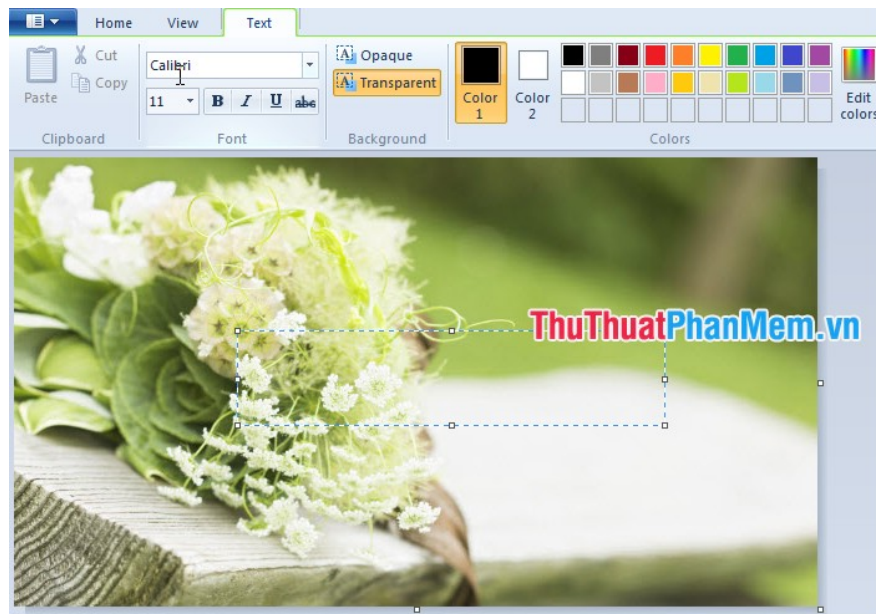


Step 2: After opening the image in the Paint tool, you begin to insert text on the image.

Click the **Home** tab -> **A** icon in the **Tools** section .



Next, hold and drag the mouse cursor to select the text area on the image.



Then place your cursor in the selected area and write the word.



Step 3: Edit the text.

You need to highlight the text, then edit the text in the **Text** tab of **Text Tools** :

- **Font (1):** edit font, font style (bold, italic, underline, dash).
- **Background (2):** select the background for text: **Transparent** (transparent), **Opaque** (background color, the default is white but selected a different color in the **Color 2** section).
- **Colors (3):** change colors for text and background colors.

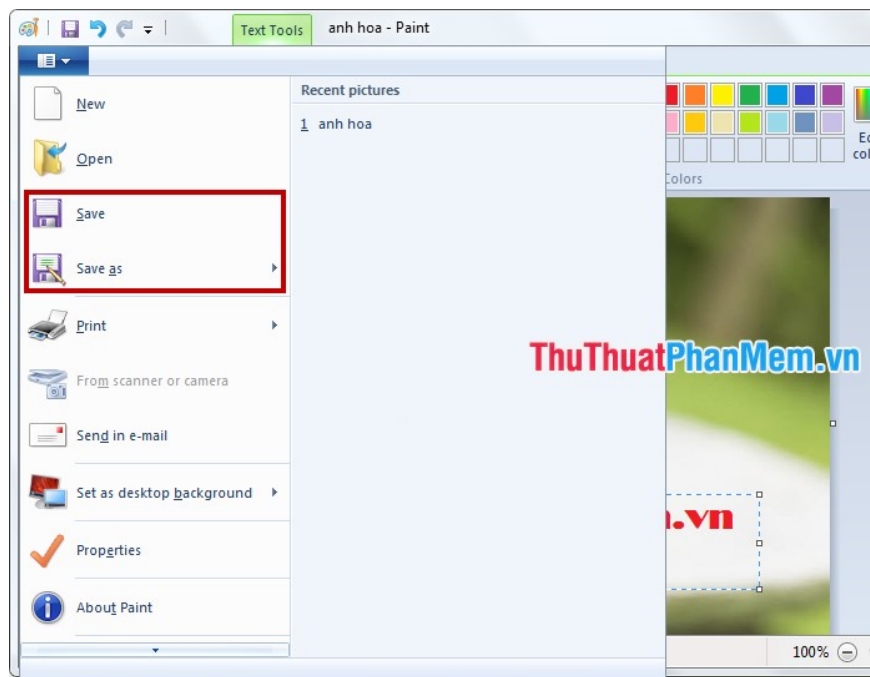


To move the text to any position on the image, you hover the mouse pointer on the edge of the text box, when the mouse pointer appears symbol as shown below, then hold and drag the text to the position you want .



Step 4: Save the image when done.

You can select the **Paint** icon -> **Save** (**Ctrl + S**) to save the image to overlay the old image. And if you want to save the image inserted text into another image to retain the original image, then you select the **Paint** icon -> **Save As** and choose the path to save the image.



Thus, without downloading and installing any software, you can insert text on images quickly. Good luck!

You finished reading the article "**How to insert text into pictures with Paint on Windows**" edited by the [TipsMake](#) team. We hope this article has provided you with many useful tech tips and tricks. You can search for similar articles on tips and guides. Thank you for reading and for following us regularly.