

How to insert text into images in Excel

When inserting images in Excel, we can create additional notes for images by inserting text with different options for writing.

One of the ways to make the document content more vivid, users can insert images, such as inserting images into Word or inserting images into Excel. And when inserting the image into the document content, you can insert text into the image to create more notes, clarify the content if desired.

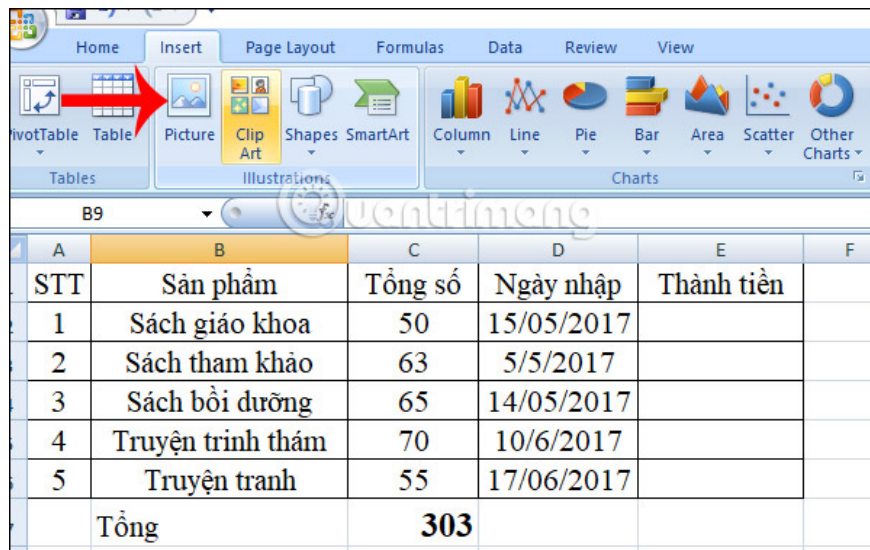
In addition to inserting an Excel chart into the content to clarify the content for the data table, users can also insert images in Excel to illustrate the document being presented. Besides, the custom of inserting content into Excel images is similar to inserting text into images in Word, or inserting text into photos on PowerPoint. Users can edit the font format, font color, font size, etc. when inserting images into Excel. The following article will guide you how to add text to images in Excel.

1. Instructions for inserting a PDF file into Excel spreadsheet
2. How to insert a Word document into an Excel file

How to add text to images on Excel

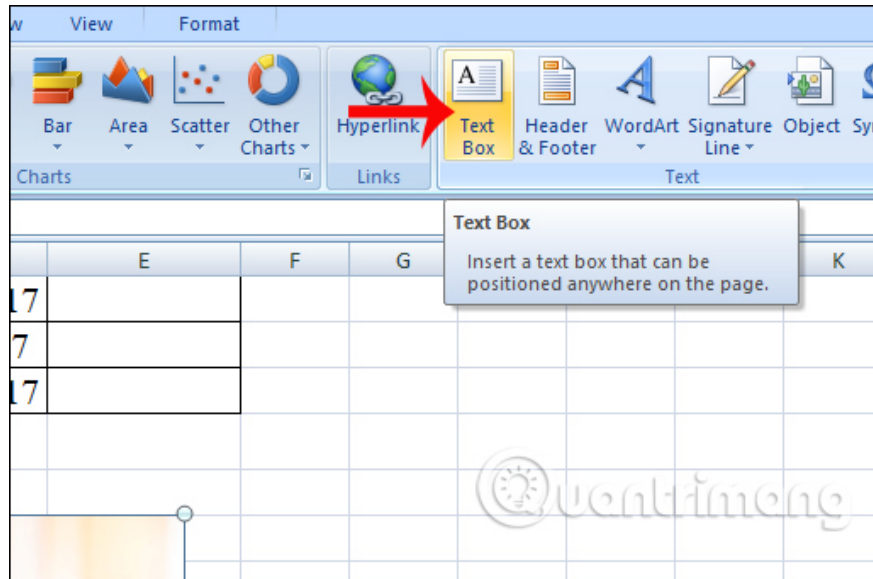
Step 1:

To insert images into Excel, click on the **Insert tab** and select **Picture** . Then select the image available on the computer, then click Insert to insert the image into the Excel document.

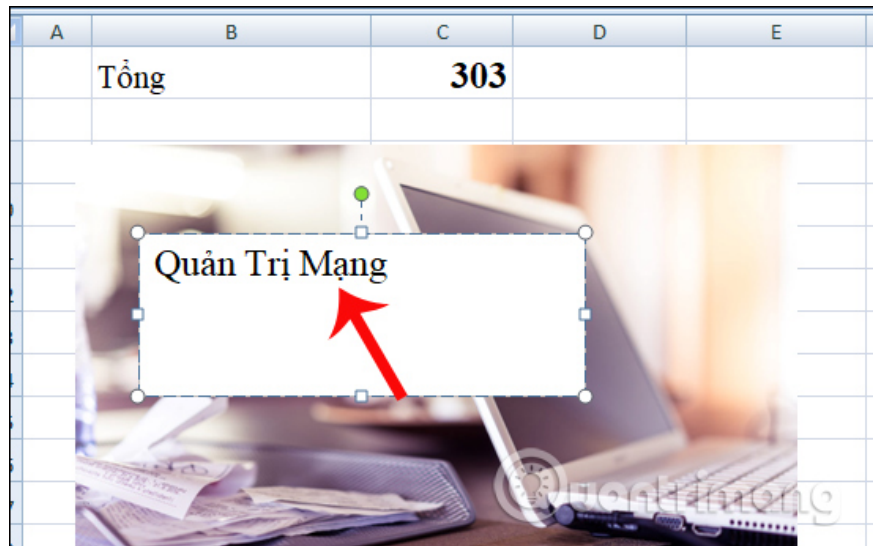


Step 2:

To insert text into images on Excel, also in the **Insert tab** click on the **Text box** above.

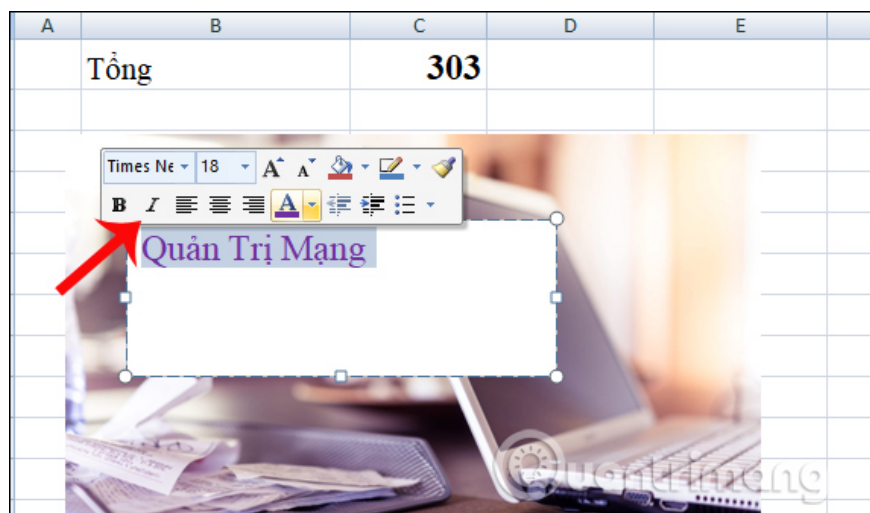


Then, place your mouse on the position you want to insert the text in the image and then put and hold the mouse to drag the frame. Users will only need to enter the text in the frame.



Step 3:

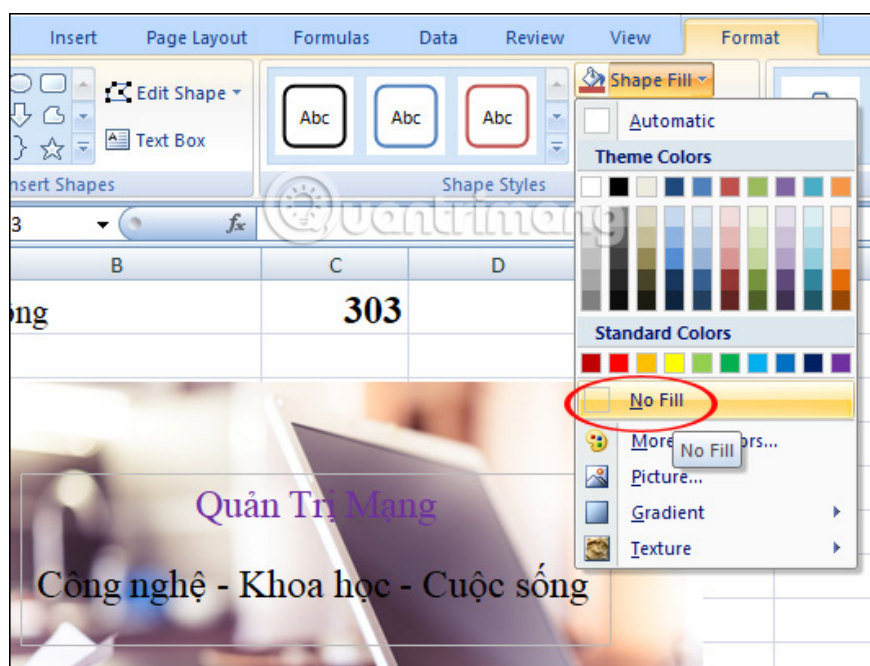
Writing can change the size or font depending on the needs of each person. Or we can choose colors for writing when inserted into Excel images.



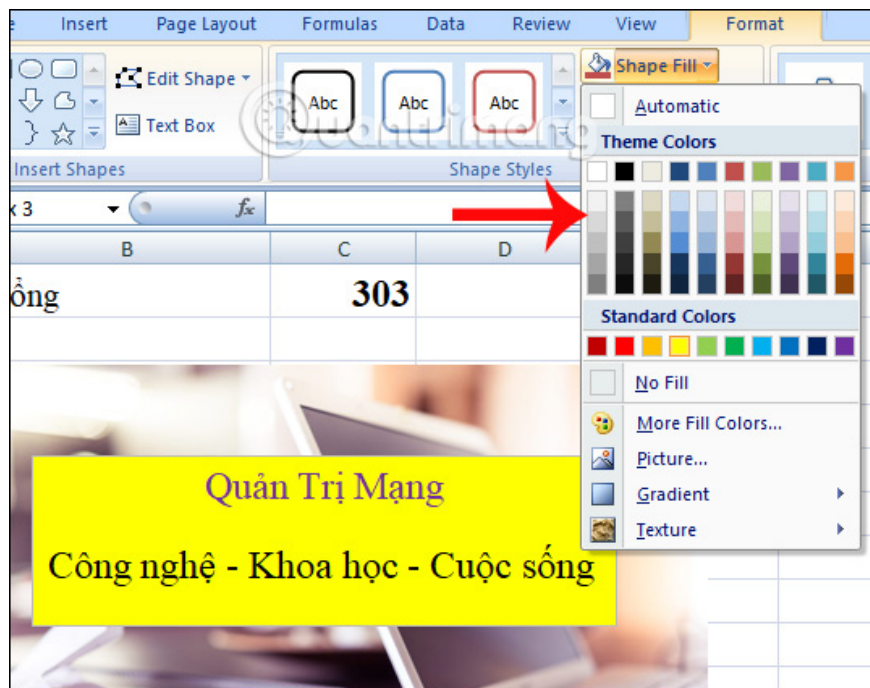
Step 4:

After you have entered the necessary content and made the format for the script, we will delete the text box and put the frame to transparent mode, no longer white as the original.

Click on the **Format** tab above and then click on the **Shape Fill** . To delete the white frame, click **No Fill** . Immediately the font border has become transparent as shown below.

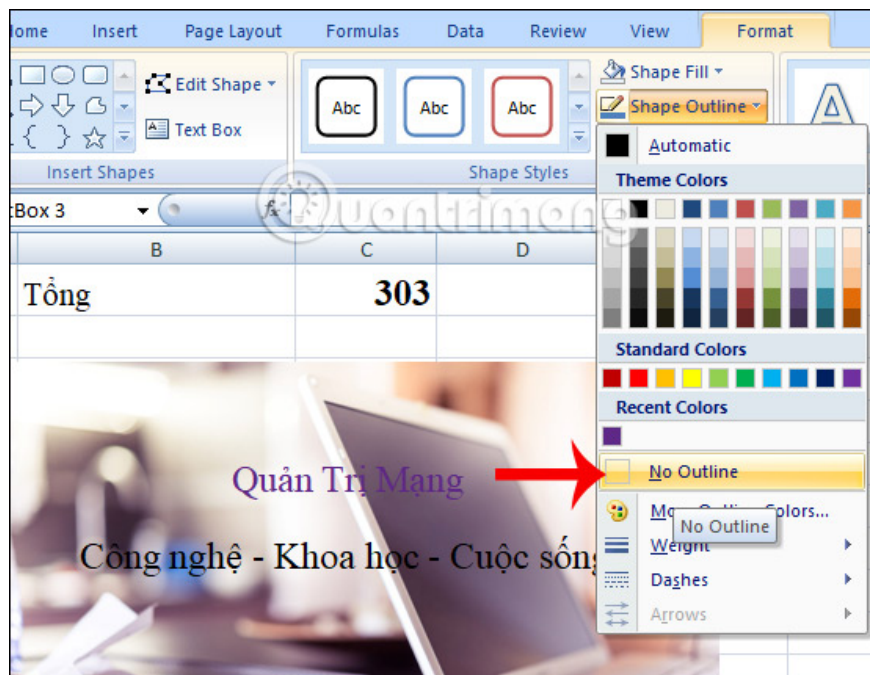


In case the user wants to select the color for the frame, click on the Shape Fill, but will **choose the background color for the frame** you want.

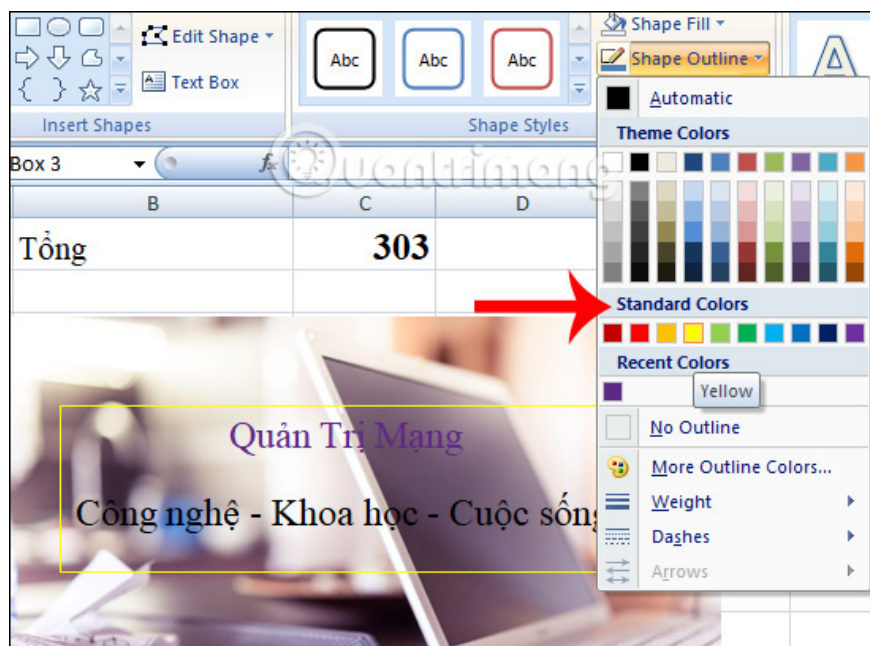


Step 5:

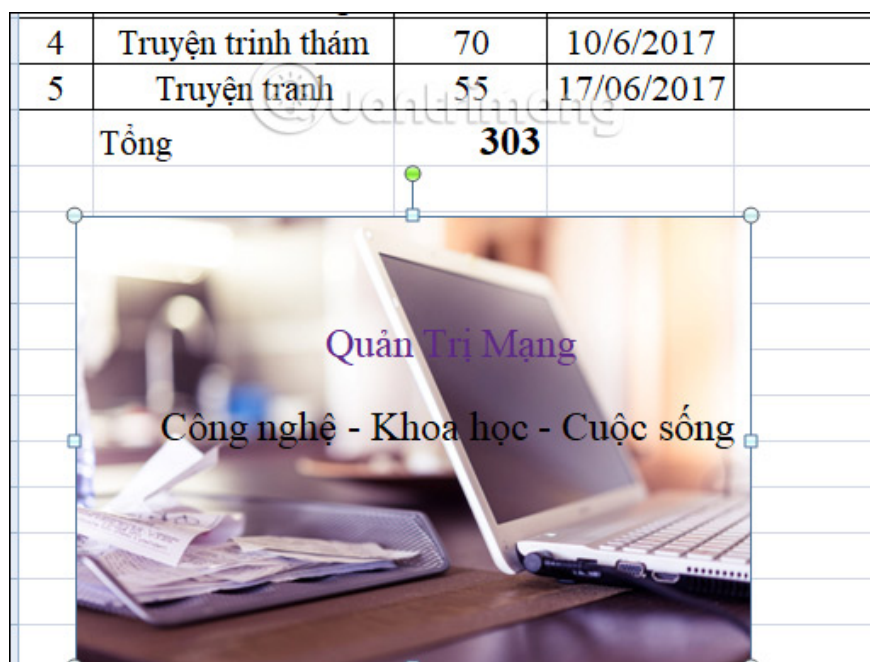
To remove the border of the frame, click the **Format** tab and select **Shape Outline** to choose **No Outline**. Frame borders will also disappear.



Similarly, if you want to make the text content more prominent, you can color it.



Finally, our Excel image after inserting the script will look like the image below.



In general, adding text to images on Excel is not a difficult, complicated operation, but very easy to implement. We can completely add the required content to the image, then edit, format the text according to the need to insert text into images on Excel in each document.

Video tutorial to add text to photos on Excel

I wish you all success!

You finished reading the article "**How to insert text into images in Excel**" edited by the [TipsMake](#) team. We hope this article has provided you with many useful tech tips and tricks. You can search for similar articles on tips and guides. Thank you for reading and for following us regularly.
