

How to insert a countdown timer in PowerPoint

When adding a countdown timer on a PowerPoint slide will make presentations more unique.

There are many ways to make a presentation more unique, from basically inserting a background image for the presentation, to adding motion effects to the slide such as the fireworks effect on the slide, or the text transition effect. hand animation for slide. And in this article Tipsmake will guide you how to create a countdown timer in presentation slides.

With presentations or crossword slides with a countdown timer, more professionalism is added to the content. Users can create a 30-second countdown timer, 2-minute countdown or insert a sound when signaling time runs out, etc. We can optionally choose a time interval for a countdown timer. The following article will show you how to create a countdown timer on PowerPoint.

1. How to create text effects in PowerPoint
2. How to insert text into images in PowerPoint
3. Guide font formatting, change stretch and create artistic text in Word
4. How to create a shadow effect on PowerPoint

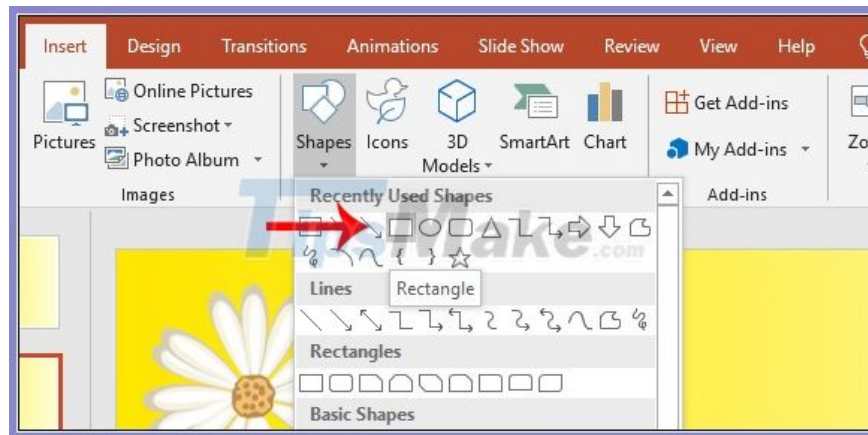
Video tutorial to create a countdown timer on PowerPoint

Instructions for creating insert slide countdown timer

1. Create a countdown timer on PowerPoint

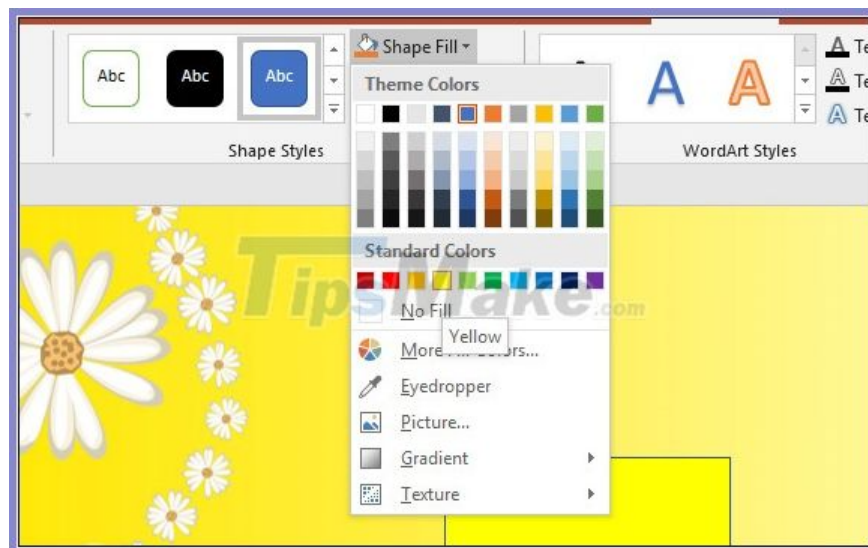
Step 1:

At the slide as a countdown clock, we click on **the Shapes item** then select the oval, or the rectangle, the circle depending on the person doing it.



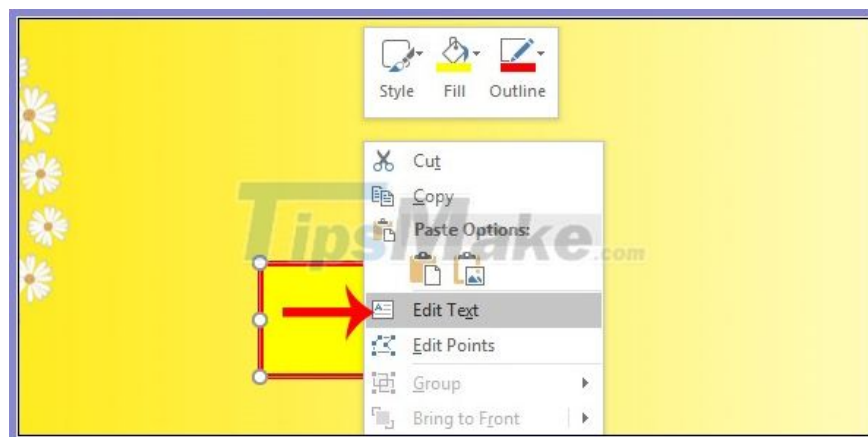
Step 2:

Draw the image on the slide and then edit the color, the background color, the thickness for the border of the frame at will.



Step 3:

Right-click on the frame and **select Edit Text** to insert text content into the frame.

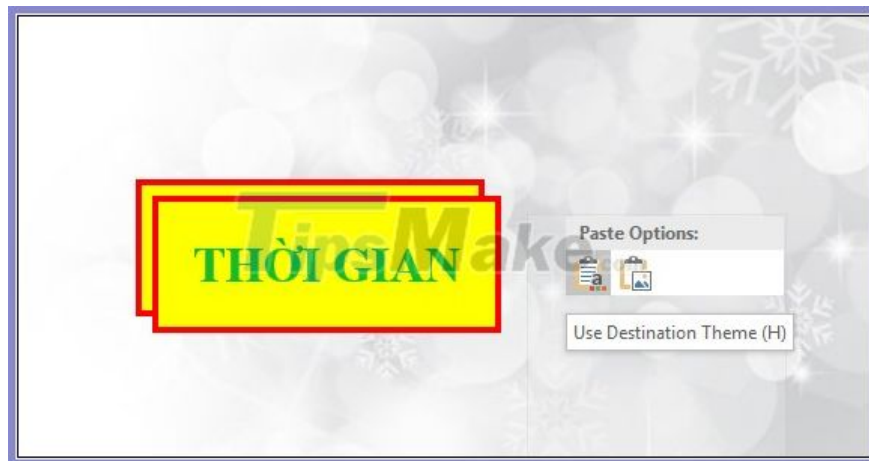


Next, users change the font, font size, other effects for text like colors, etc. You should choose the basic font, do not choose too fancy font, choose the outstanding color.



Step 4:

Next right-click on the Time frame and select copy and then press paste to **copy into 2 time frames** as shown below.



At the Second Time frame, delete the text inside and **change it to the maximum number of seconds** you want for the countdown timer, such as a 30 second fill. If you want a countdown timer of 1 minute, enter 1:00 in the content.

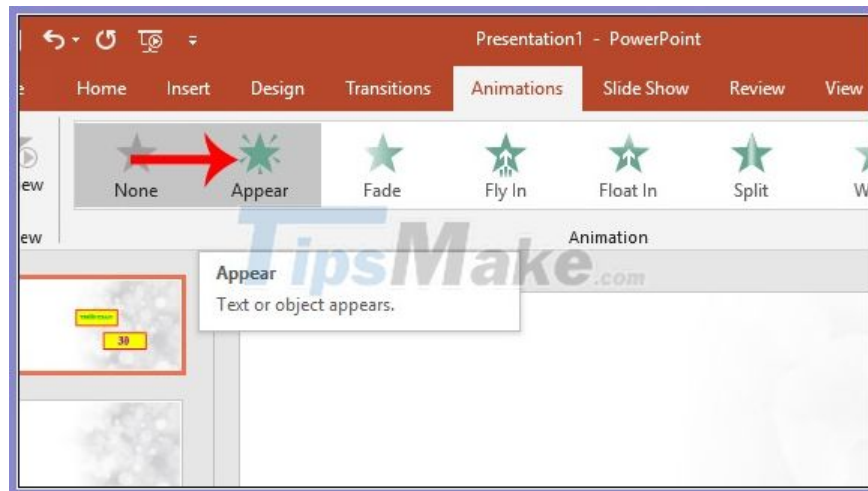


Also change the color for the entered time, so change to another color for easy identification with the First Time frame.

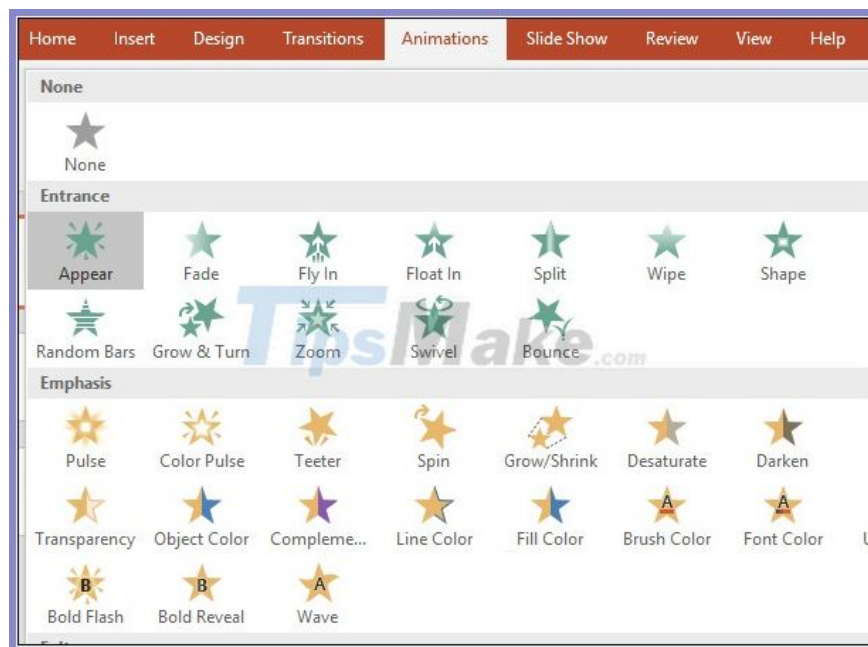


Step 5:

Select frame 30 and then click on **Animations tab** and select **Appear effect** for frame.

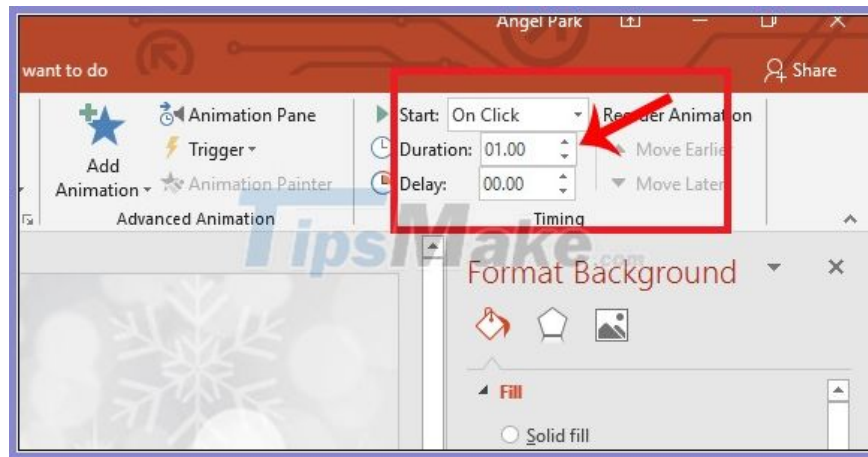


If this effect is not available, expand the effect pane on the slide to search.



Step 6:

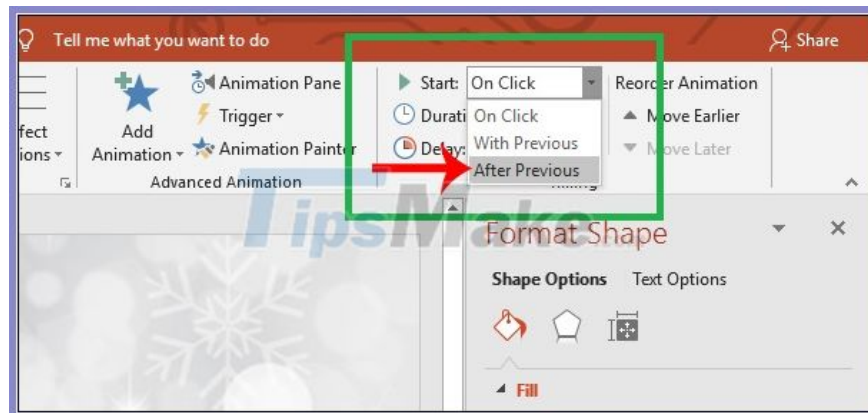
At the **Timing section**, users adjust the time for frame number 30. At **Start select On Click** , **Duration selects 1 second** to count down every second.



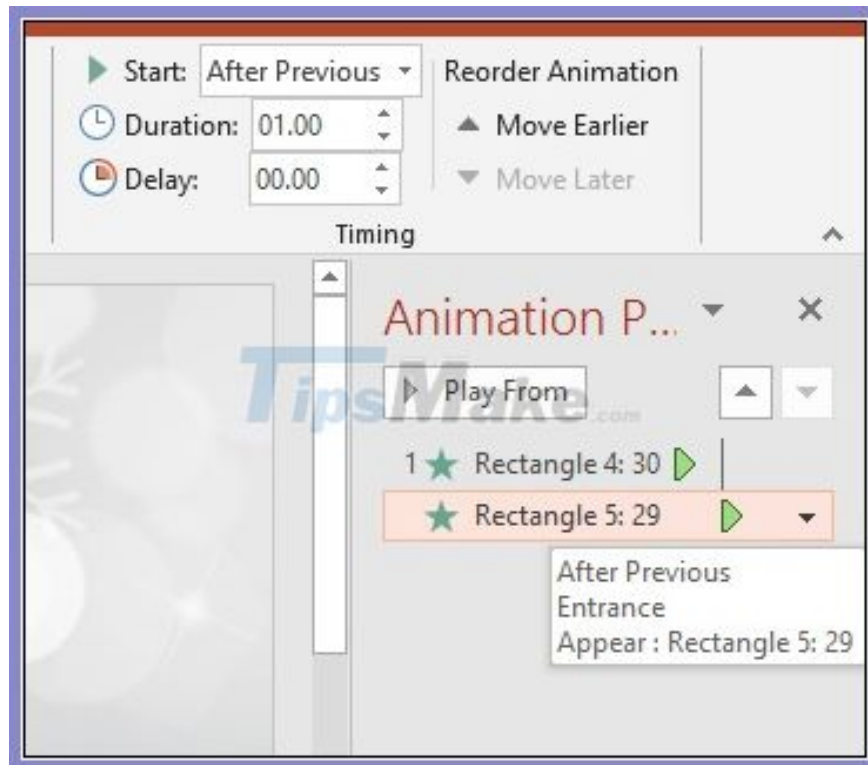
Continue to **copy the number 30 frame into another frame** and then enter the number 29 into the frame to count down.



Then adjust the effect for the 29th frame in **the Start section after After Previous** .

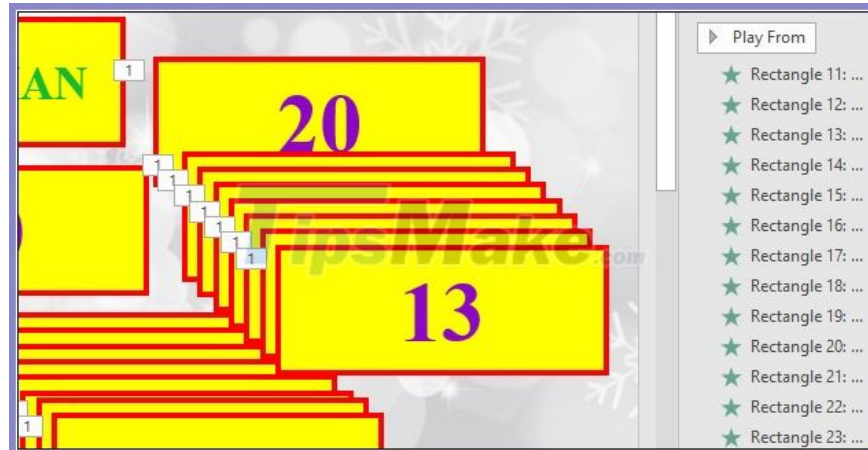


If you want to check the effects used for each frame, click on **the Animation Pane** and then display the effect pane on the right side of the screen. Here you will see each effect used for frames.



Step 7:

We continue to copy time frames until the rest. The time effect remains as After Previous.



Step 8:

In frame 5 to alert the countdown time expires, you can change to another color, such as dark red and then enter the time frame to continue to 1.



When the end of number 1 will change to **frame Timeout** as shown below. Users also adjust the font to match the frame.



Step 9:

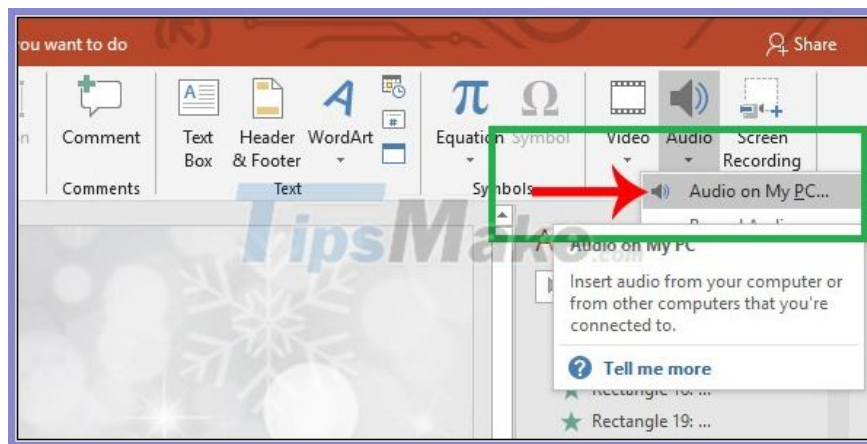
Next , **surround all the existing frames** on the slide and display the **Drawing Tools** group. At the **Format tab**, click **Align** , select **Align Right** to group the frames right, or **Align Bottom** to align it down.

You need to **group them into one frame** as **shown** below. Depending on the slide, the user selects the group position accordingly. If you want to move the frame to another location, just surround the frame to the group and move to another position.

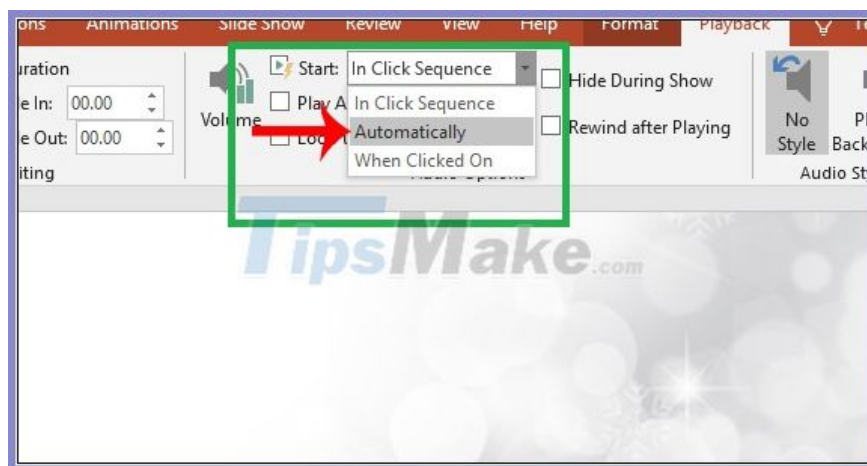


Step 10:

To create a countdown timer with sound when the timer runs out, click on the **Insert** tab and then select **Audio** and then click on **Audio on My PC**. You need to download the audio file earlier.



Once you've inserted the sound into the slide, in the **Audio Options** section click **Automatically**.



So the sound will automatically put behind the frame Timeout.



Step 11:

Continue **dragging the speaker icon into the frame Time** to copy the clock to the new slide will come with an audio icon.



Right-click and select **Send to Back** to insert the sound under the Frame Timeout.



We try to test the content and will see the countdown clock displayed and there is a sound when the time is up.



2. Insert content into PowerPoint slides

Step 1:

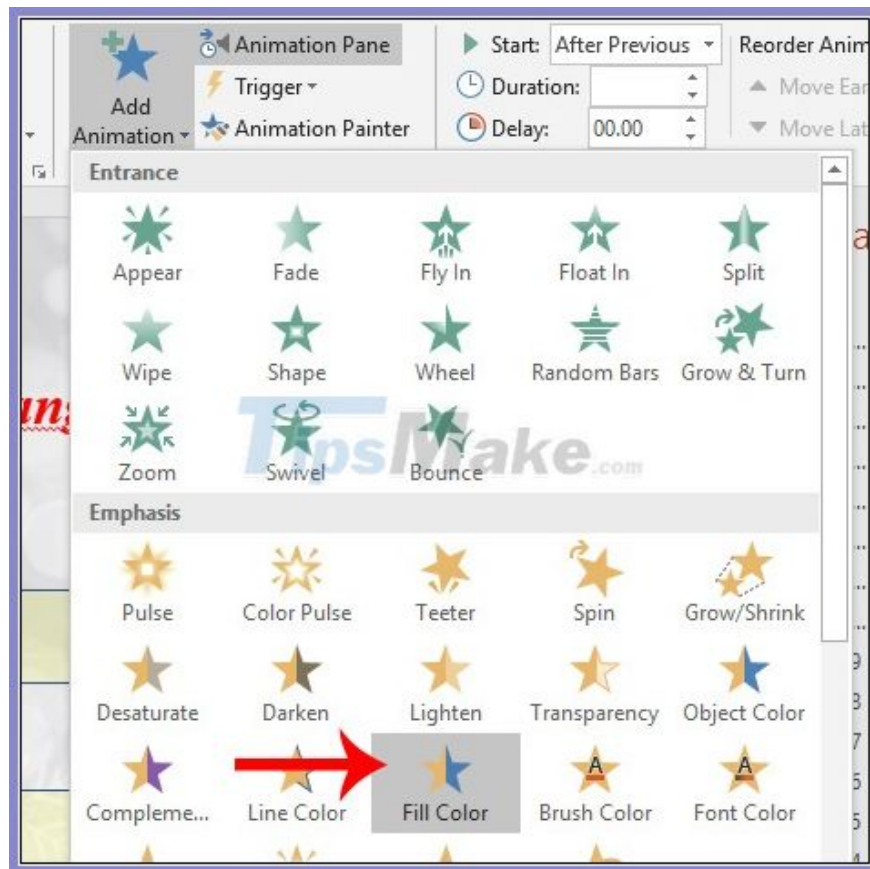
We will create the question group on the new slide completely. Then create the frame and insert the question as usual.



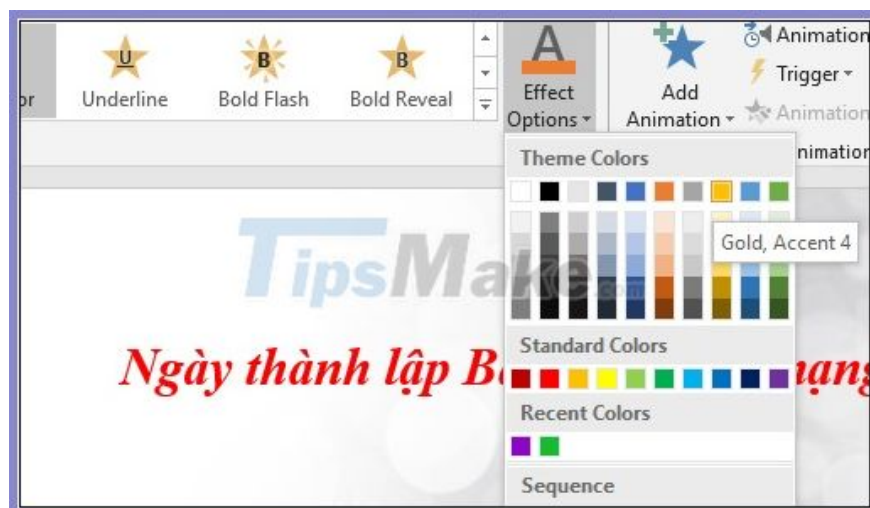
Step 2:

Users **create effects for questions and answers** below. We can choose individual effects for questions and individual effects for groups of answers. Depending on the requirements as well as the presentation of each person you choose the motion effect accordingly.

At the **right answer**, users can insert effects by clicking on the **Animations tab** and then clicking on another effect. Click **Add Animation** and select **the Fill Color effect** for the correct answer.

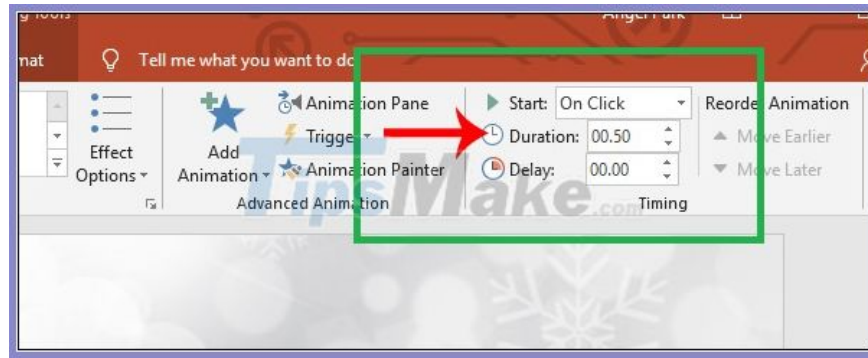


If you want to edit the effect, **press Effect Options** to add color to the effect.



Step 5:

At the **Timing for the correct answer**, select **0.5 for the Duration section** as shown.



So you have finished the slide and inserted the countdown timer on PowerPoint. When the time is up, the countdown will have a notification sound for the viewer to know.

Basically the actions taken to create a clock to the back of the slide are like that. Users should note that when switching the timer frame to the content slide, it is necessary to surround the frame and then press Copy to transfer the entire effect and the full time of the frame.

I wish you all success!

You finished reading the article "**How to insert a countdown timer in PowerPoint**" edited by the [TipsMake](#) team. We hope this article has provided you with many useful tech tips and tricks. You can search for similar articles on tips and guides. Thank you for reading and for following us regularly.