

How to insert 3D letters into images

To insert logos for 3D typefaces, we can do them right in Photoshop.

Inserting text into images is one of the most popular and effective photo copyright stamps. In addition to image copyright software, you can also design logos in Photoshop very simply to insert images.

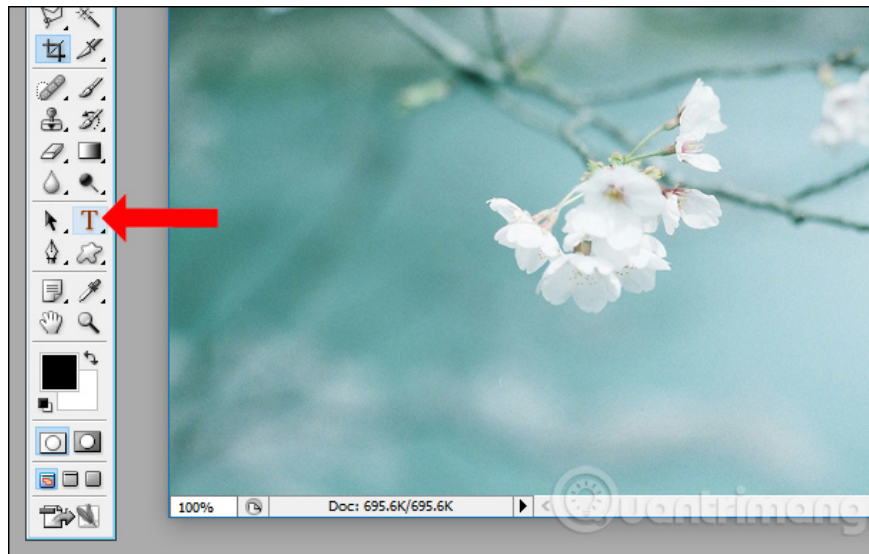
Photoshop has the option of writing text into images with different font styles, font sizes or font sizes. And if users want to create more art for the logo, they can create a transparent 3D effect for the text and insert it into the image. The following article will show you how to attach the 3D letter logo to photos in Photoshop.

1. Instructions for designing websites in Photoshop
2. Instructions for deleting logos on photos
3. Instructions to separate photos from the background in Photoshop

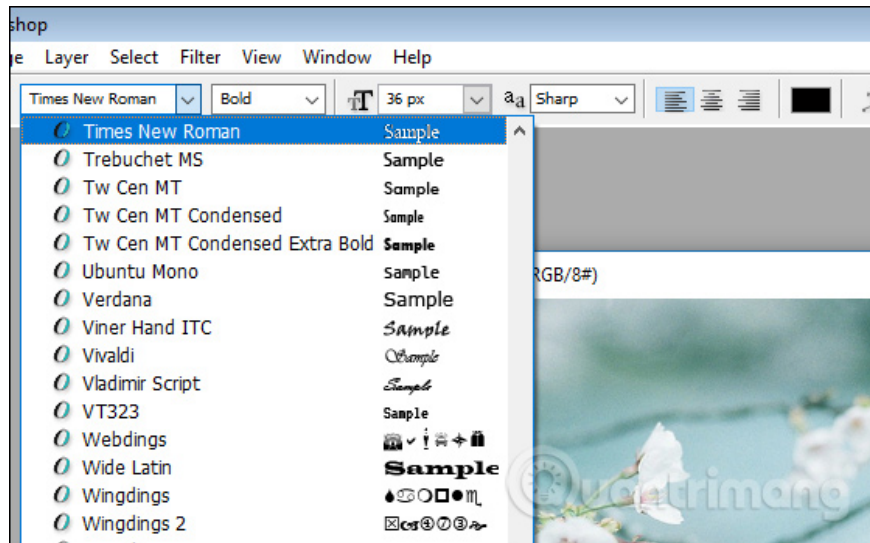
Instructions for creating 3D text in photos in Photoshop

Step 1:

First, open the image you want to insert text on Photoshop. Continue to click **the T symbol** to insert the letter.

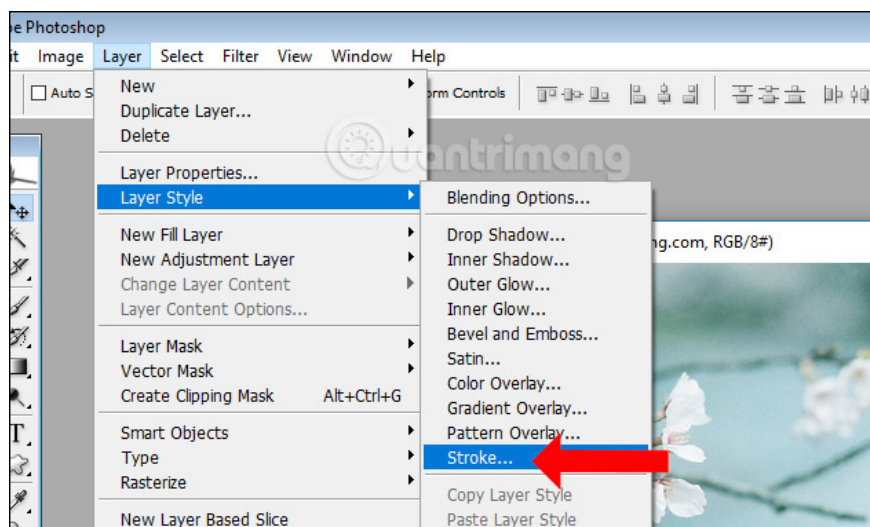


Next we choose the font, font type and font size inserted into the image. By default the text will be in black. You should adjust the font size to match the image.



Step 2:

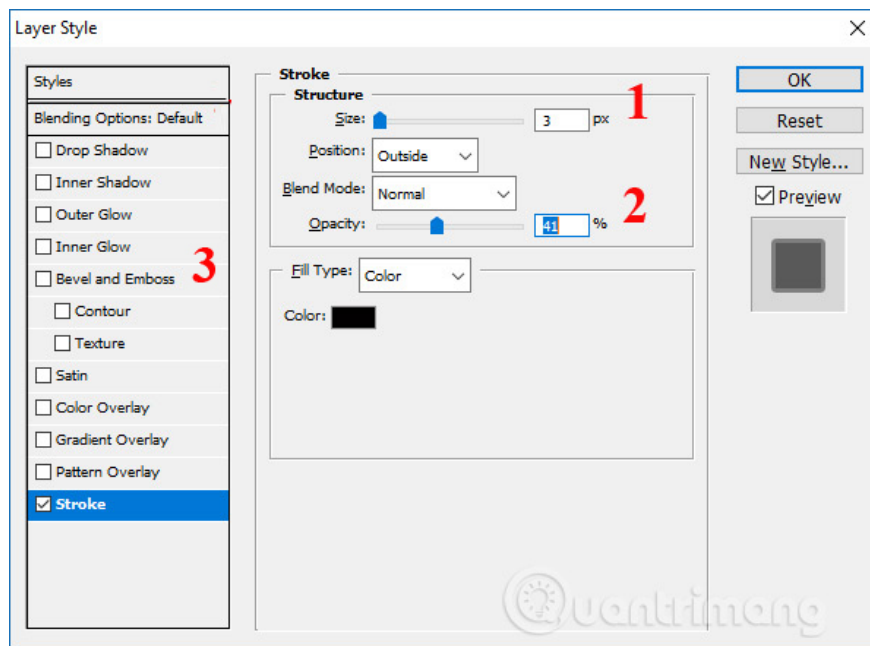
After writing the text on the image still holding the mouse in the text, click on **the Layer** item and then select **Layer Style** and select the **Stroke** .



Step 3:

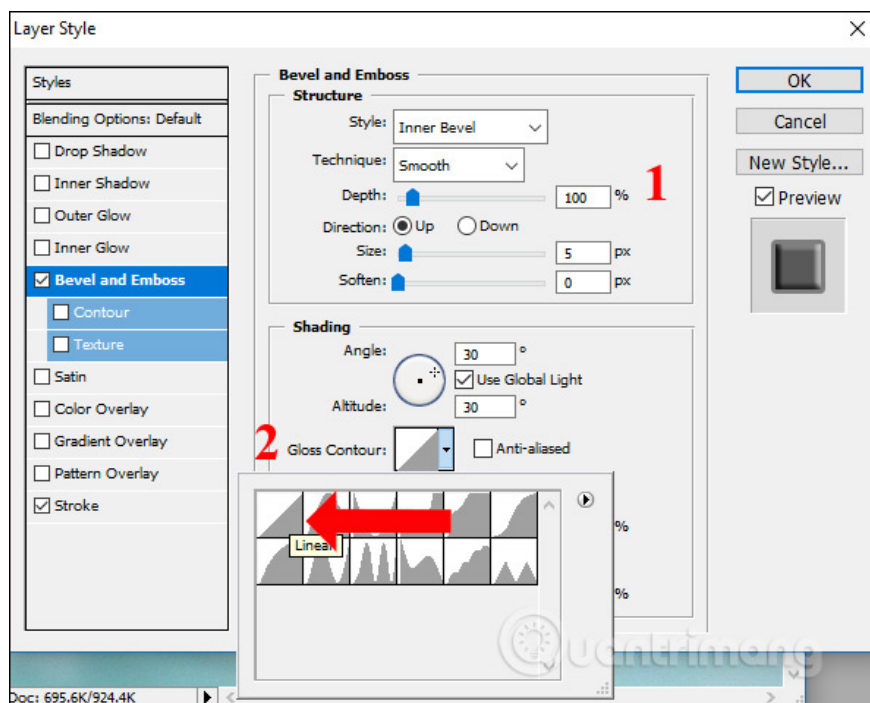
The Layer Style dialog box appears. At **the Size bar**, increase the size from 3-5. **The Opacity part** is reduced by 50% or less.

The Color section will default to black to create a black border for the text. When you're done, click **the Bevel and Emboss** item in the menu on the left of the interface.

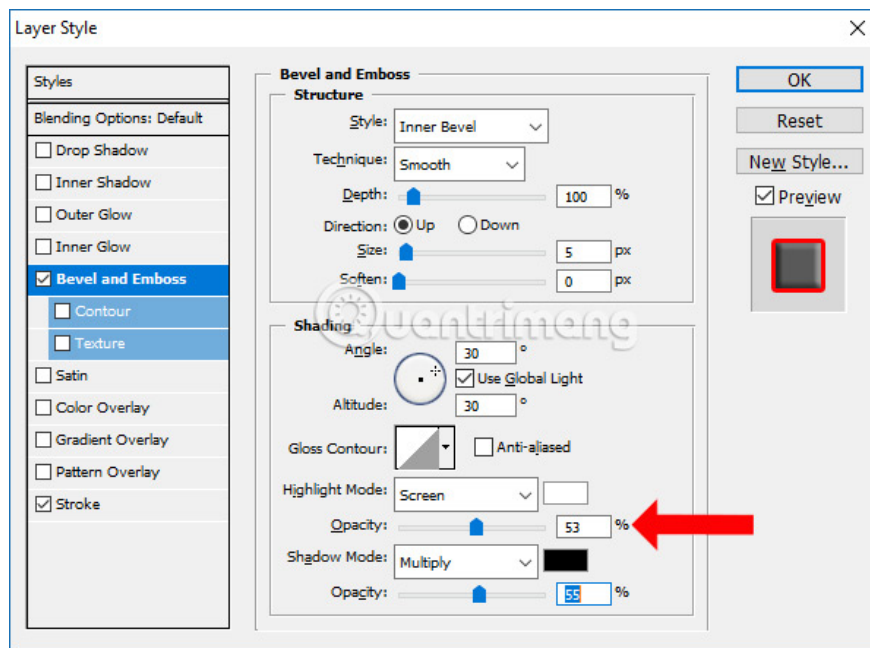


Step 4:

In this new section, Mr. **Depth** moved to 100%. The **Gloss Contour** section will select the 3D border as shown.

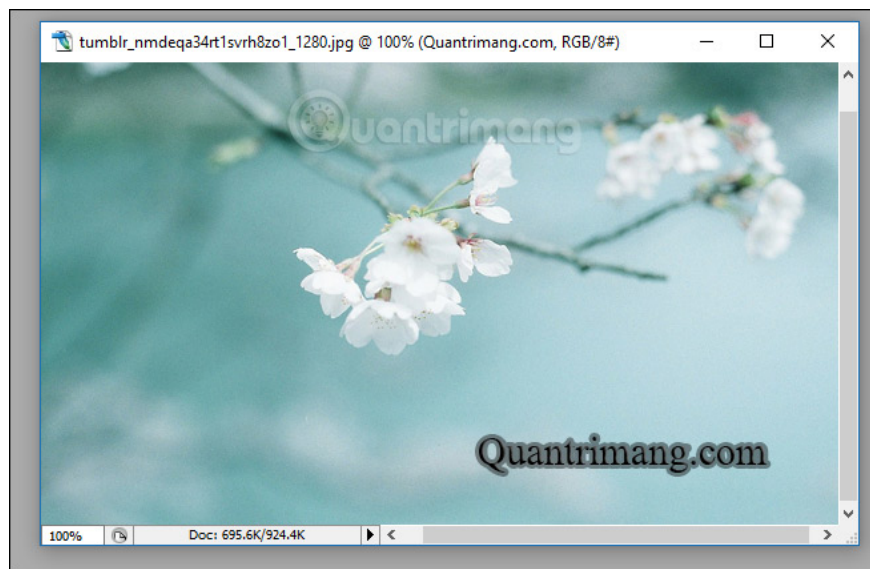


The **Opacity** part at **Hightght Mode** and **Shadow Mode** is set to below or equal to 75%.



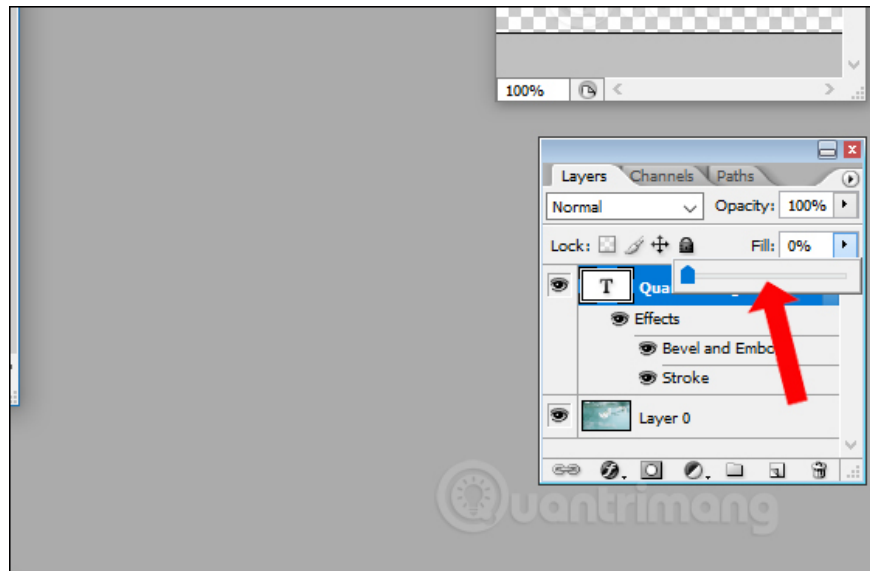
Step 5:

The 3D style text will be shaped as the first step as shown below.



Step 6:

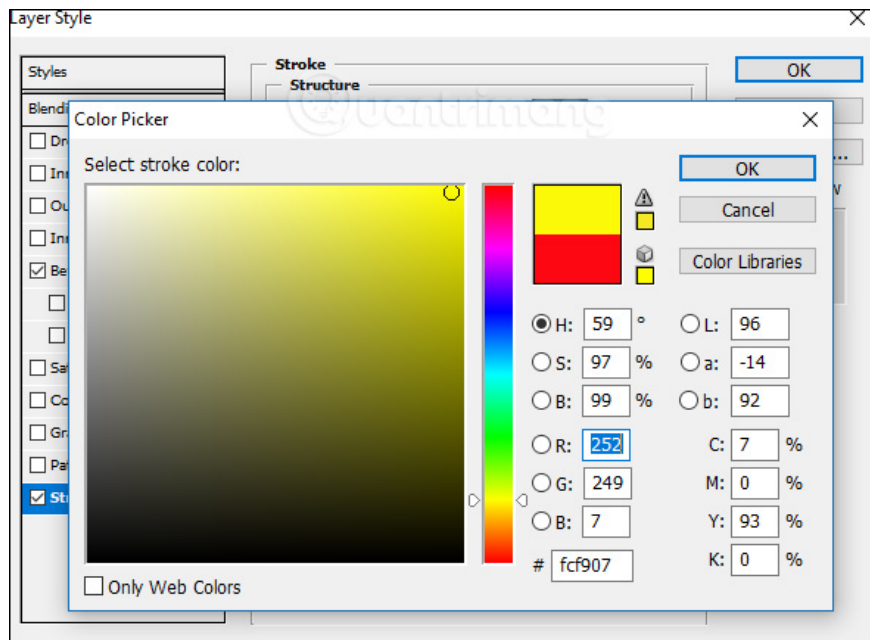
Finally, in the **text layer** on the right side of the screen, we reduce the **Fill to 0%** .



The end result of 3D text is inserted into the image as shown below.



In case you want **the 3D text inserted in the image with a color border** , click the Layer Style again, select **Stroke** . Then **the Color section select another color** for the border.



The 3D text result will have the color as shown below.



One more way to create artistic text inserts images with Photoshop tools. The type of copyright stamp for 3D images will create more art for the image, and users can keep the image copyright for themselves. If you do not want to use logo creation websites, you can use Photoshop right away.

Instructions for creating 3D text inserted into photos in Photoshop

See more:

1. Using DesignEvo to design online logo
2. 45 smart Photoshop tips you need to know

3. How to create logo with Foundry Logo on Android, iOS

I wish you all success!

You finished reading the article "**How to insert 3D letters into images**" edited by the [TipsMake](#) team. We hope this article has provided you with many useful tech tips and tricks. You can search for similar articles on tips and guides. Thank you for reading and for following us regularly.
