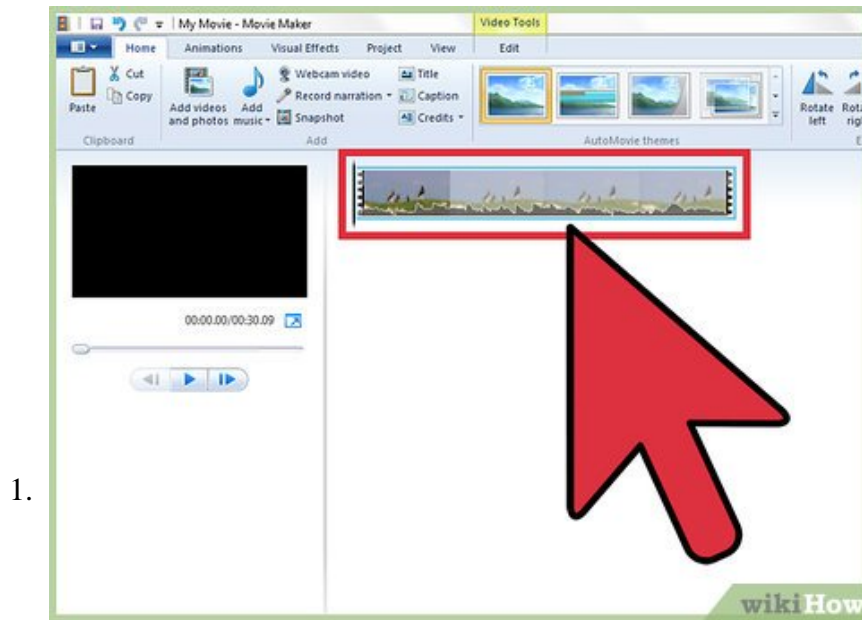


# How to Increase the Speed of Videos on Windows Movie Maker

Windows Movie Maker is a simple pre-installed video editor. You can easily speed up or slow down video clips for effect, although the effect is limited to doubling the speed. You can even split and splice video clips, so that you can speed...

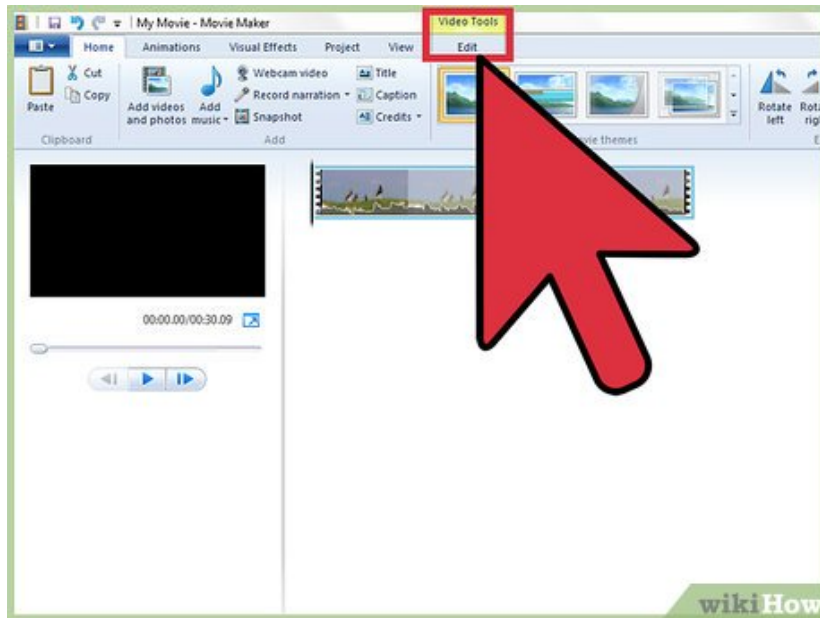
Method 1 of 2:

## Windows Live Movie Maker



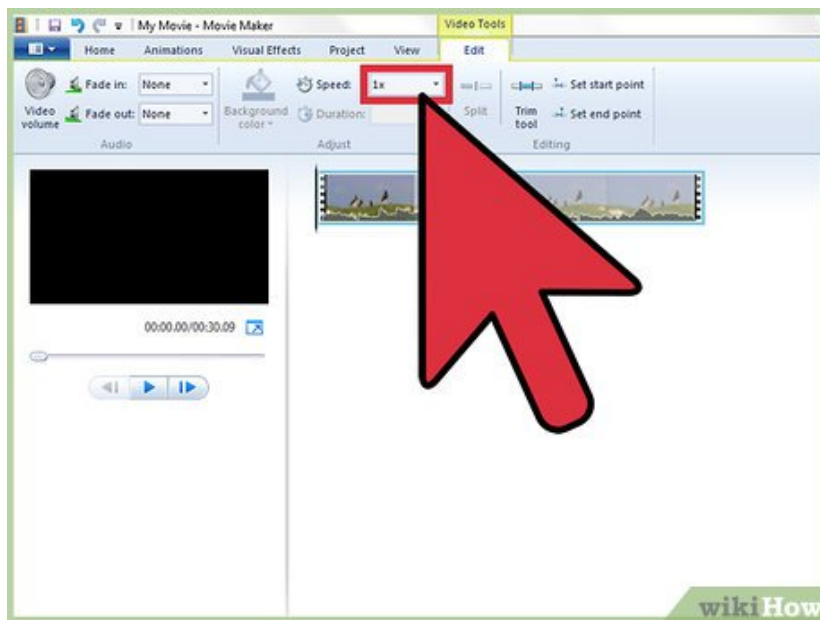
**Open your video in Windows Live Movie Maker.** Import the video file into the program, then drag the clip into the timeline. If you only want to speed up a specific section of the video, make sure to Split the video at the the beginning and end of the "sub-clip" to create a separately-adjustable clip.

2.

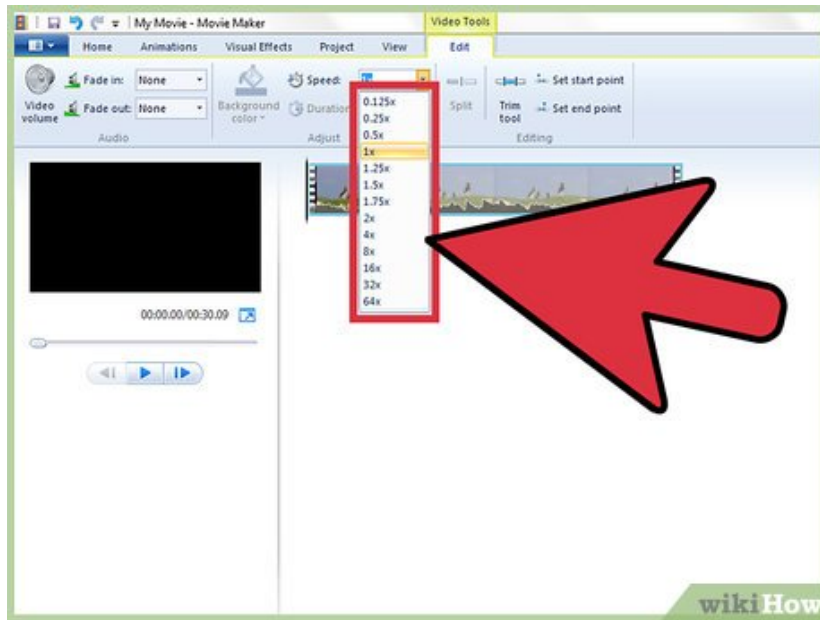


**Click the "Video Tools Edit" tab.** Find this tab at the far-right end of the navigation bar along the top of the window: to the right of Home, Animations, Visual Effects, Project, and View.

3.



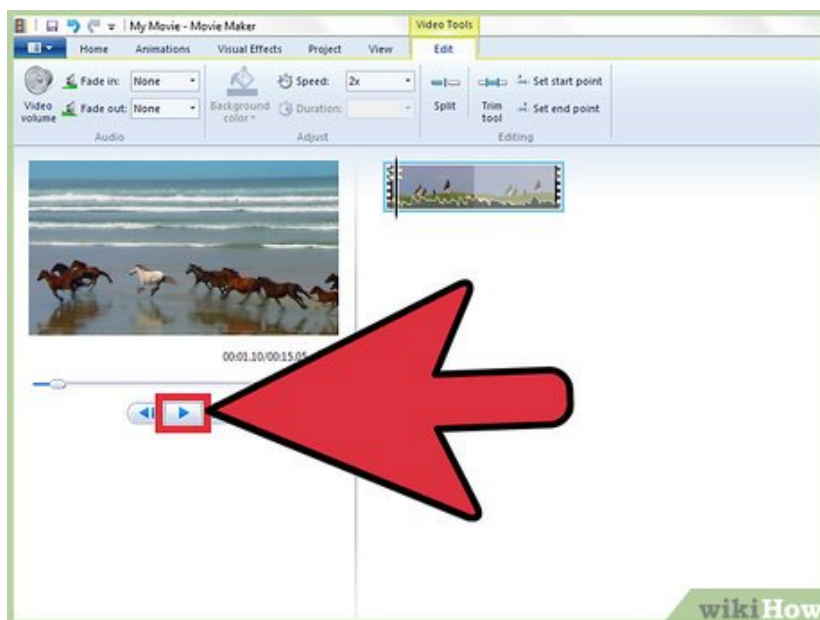
**Open the "Speed:" drop-down menu.** Find this in the central "Adjust" section of the Video Tools Edit bar: above Duration; to the right of Background Color; and to the left of Split.



4.

**Choose the increment of speed increase.** The values range down the drop-down menu relative to the original speed of the video: 1x. If you select 0.125x, you will slow the clip down to 1/8 of its the current speed. If you choose 64x, you will increasing the speed by sixty-four times the current pace. If you aren't sure which speed to use, consider why you need to speed up the video.<sup>[1]</sup>

1. Choose the highest values (64x, 32x, 16x) if you are speeding up a video of something incredibly slow: a sunset, or a snowman melting, or a plant growing.
2. Use 8x or 4x if you want to fit something fairly slow into a much shorter span of video time: a snail crossing a driveway, or a group of people building something.
3. Speed the video up 2x—double the original speed—if you want to speed along a regular scene without losing clarity, or if you want to minutely adjust a clip of something slow.
4. If you decide that you want to slow down the video, use a small value: 0.125x, 0.25x, or 0.5x.

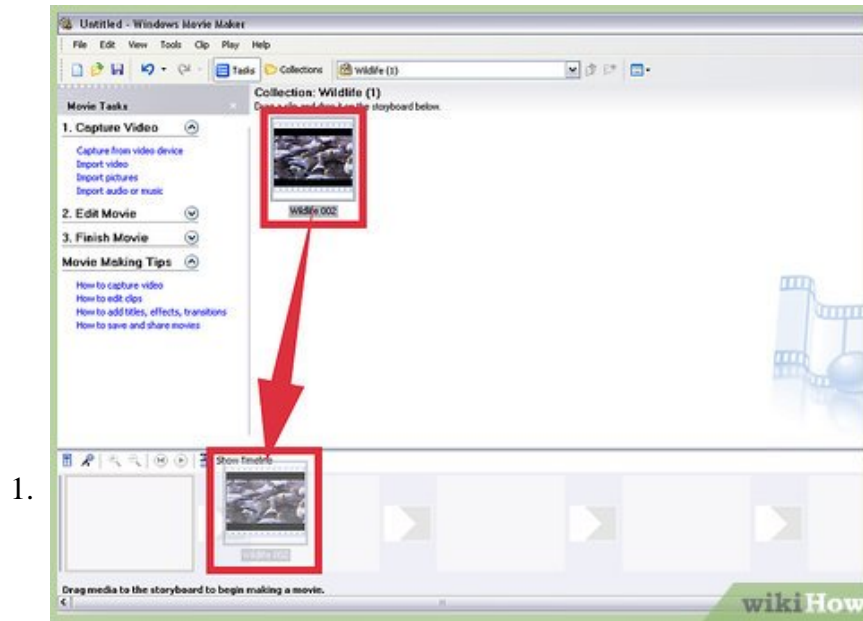


5.

**Review the new speed.** Watch the video through, and make sure that the new, faster speed works with your vision for the project. If not: adjust it. Don't be afraid to split the clip in question into a collection of even-smaller clips, each with its own unique speed. Be aware that when you speed up the video, you shorten its duration – so it will look shorter on the timeline.<sup>[2]</sup>

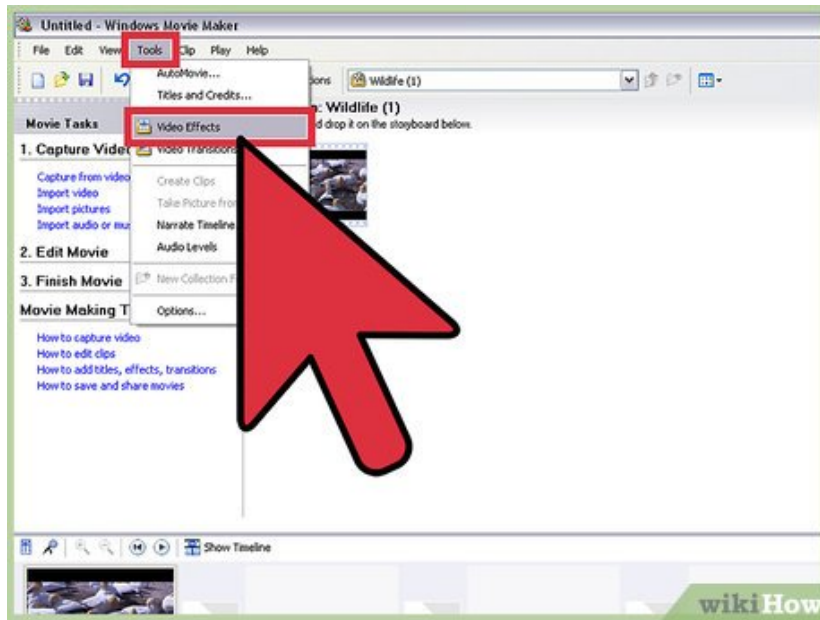
Method 2 of 2:

## Windows Movie Maker 2003



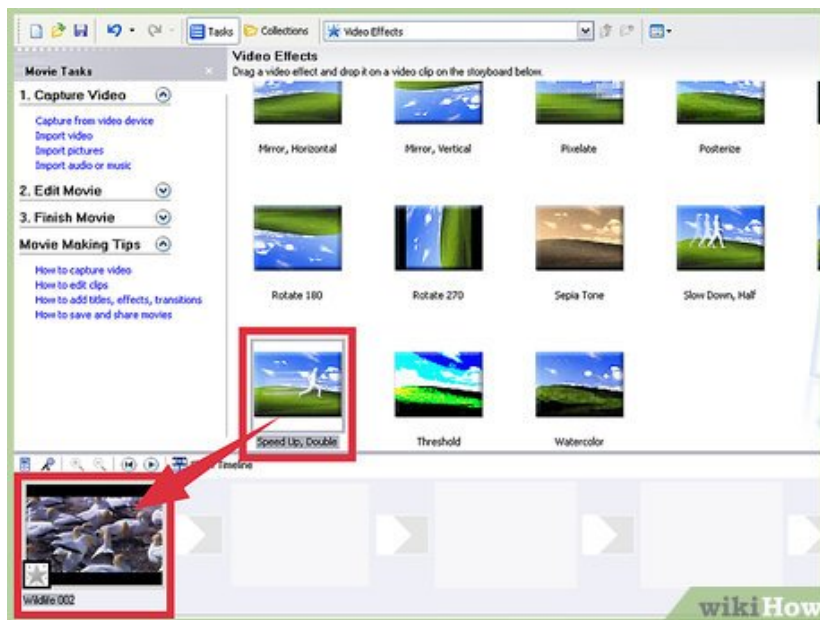
**Open your video in Windows Movie Maker.** If you haven't done so already: Import your video clip into Windows Movie Maker, then Drag the file onto the timeline along the bottom of the window. If you want to speed up the entire video, just leave it as is. If you want to speed up a specific portion of the video, you'll need to split the video into several clips.

2.



**Open the video effects.** From the main storyboarding screen, click Tools, then Video Effects.

3.



**Choose "Speed Up, Double."** Scroll through the various video effect options until you find "Speed Up, Double." Left-click and drag this effect to the timeline version of the video clip that you want to speed up – then "drop" the effect onto the clip. This should double the speed of your video clip.<sup>[3]</sup>

1. Windows Movie Maker does not have a more precise speed-increase effect than the doubling tool. If you want to do something more advanced, you'll need to find another video editor.

4.



**Slow the video back down.** If you make a mistake, you can simply press `Ctrl+Z` or click "Undo" to restore the clip to its original speed. You may also apply the "Slow down by half" effect. Navigate to the Video Effects tab again, then drag "Slow down by half" onto the video.

1. Try right-clicking on the timed clip, then selecting "Effects." You should be able to see the effects that are currently applied to this clip, and remove any effects that don't fit your purpose.

You finished reading the article "**How to Increase the Speed of Videos on Windows Movie Maker**" edited by the [TipsMake](#) team. We hope this article has provided you with many useful tech tips and tricks. You can search for similar articles on tips and guides. Thank you for reading and for following us regularly.