

How to increase the number of Remote Desktop connections

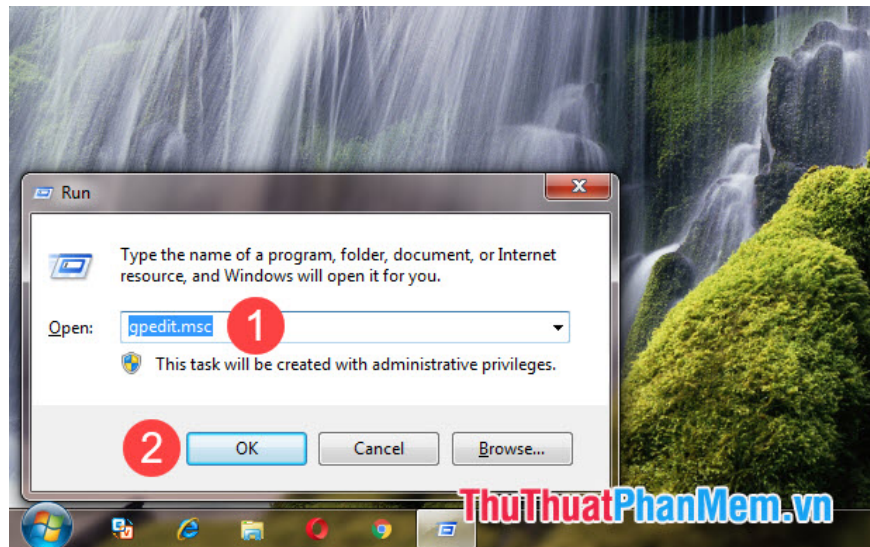
Remote Desktop also has a unique feature that is the ability to connect multiple devices in one session. So how to increase the number of Remote Desktop connections? Invite you to read along to follow the instructions below!

Remote Desktop on Windows is a unique and interesting feature that helps you to control your computer remotely similar to TeamView. However, Remote Desktop also has a unique feature that is the ability to connect multiple devices in one session. So how to increase the number of Remote Desktop connections? Invite you to read along to follow the instructions below!



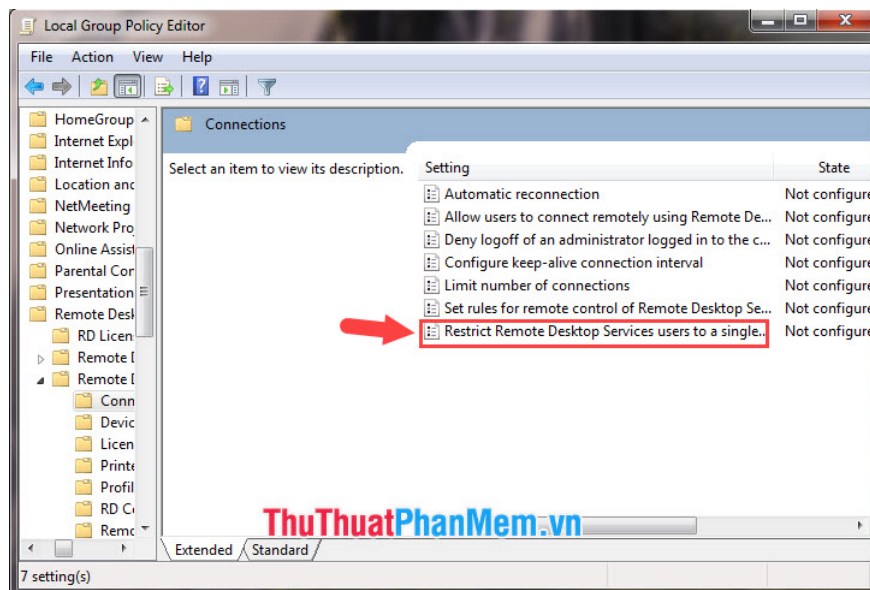
Method 1. Use Local Group Policy

Step 1: You press **Windows + R** combination to open the **Run** dialog box . Next, you enter the keywords **gpedit.msc** (1) and **OK** (2) .

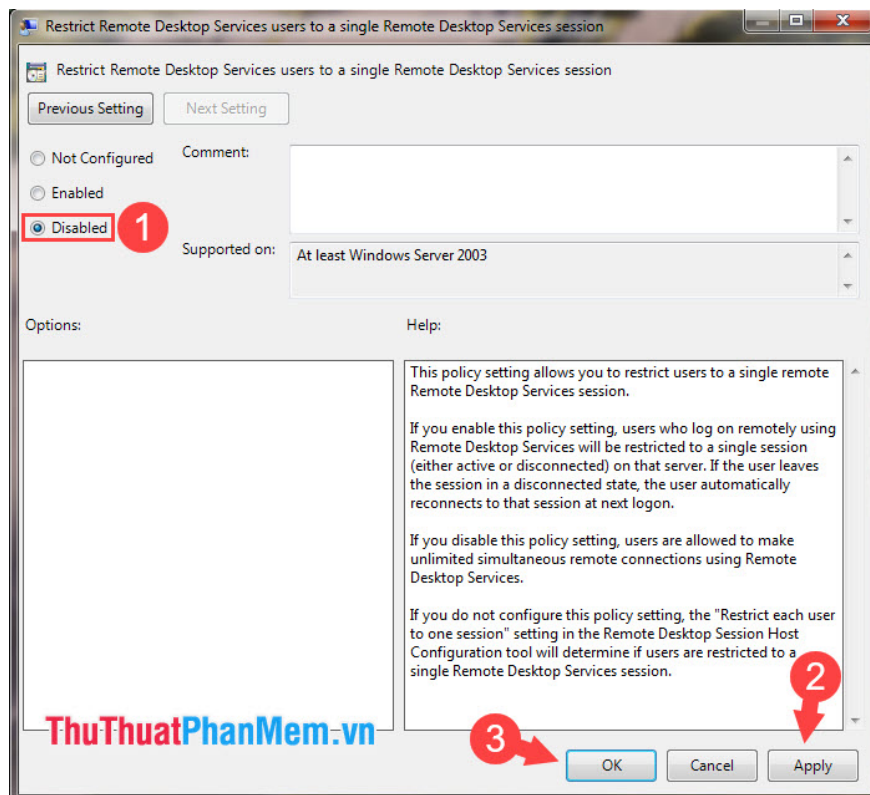


Step 2: Access the following path: **Computer Configuration => Administrative Templates => Windows Components => Remote Desktop Services => Remote Desktop Session Host => Connections**

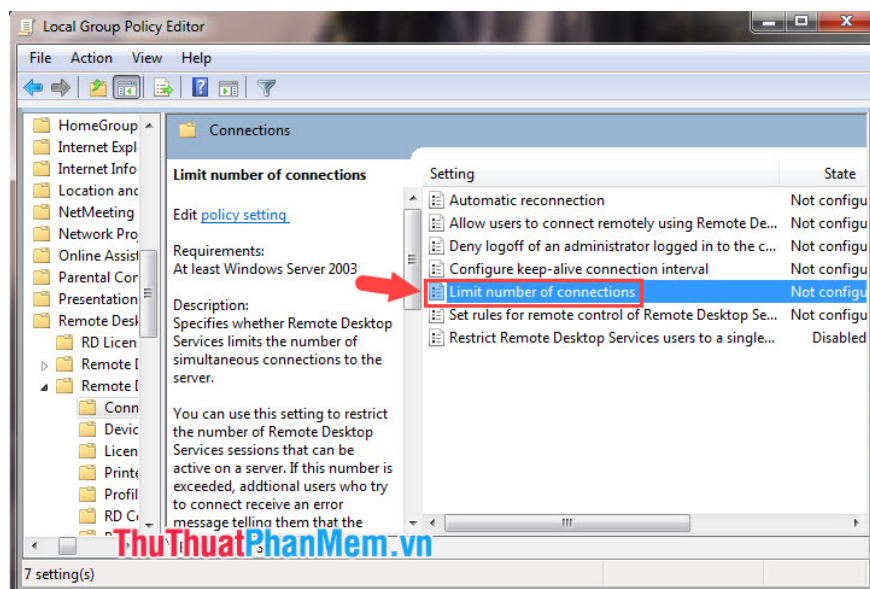
Next, double-click on the **Restrict Remote Desktop Services user to a single Remote Desktop Services session.**



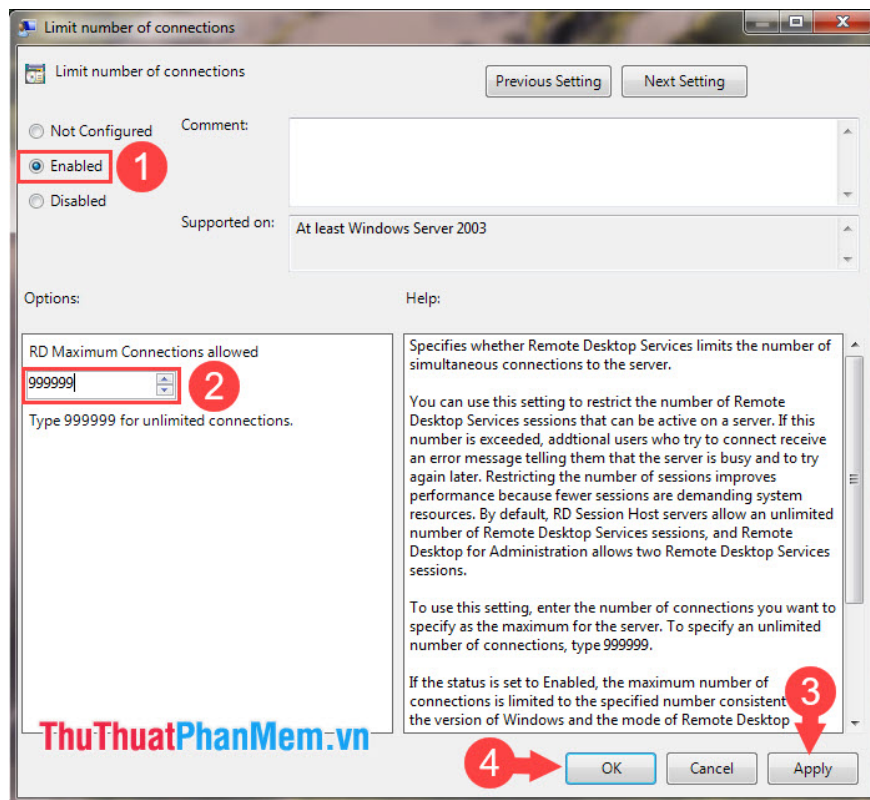
Then you select the line **Disable (1) => Apply (2) => OK (3) .**



Step 3: Then, you go back to the previous section and double-click the item **Limit number of connections** .



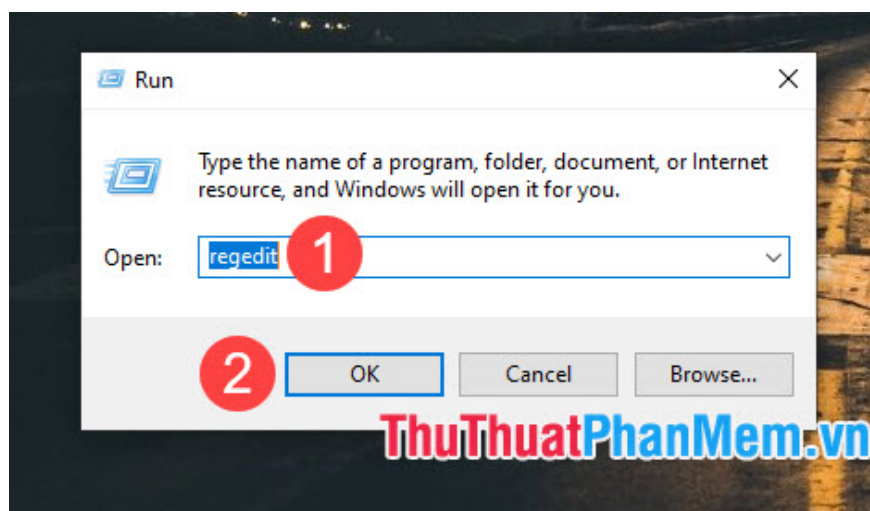
Next, you select the **Enabled (1)** => set **RD Maximum Connections allowed** is **99999 (2)** => **Apply (3)** => **OK (4)** .



After setup is complete, please restart the computer to complete the changes.

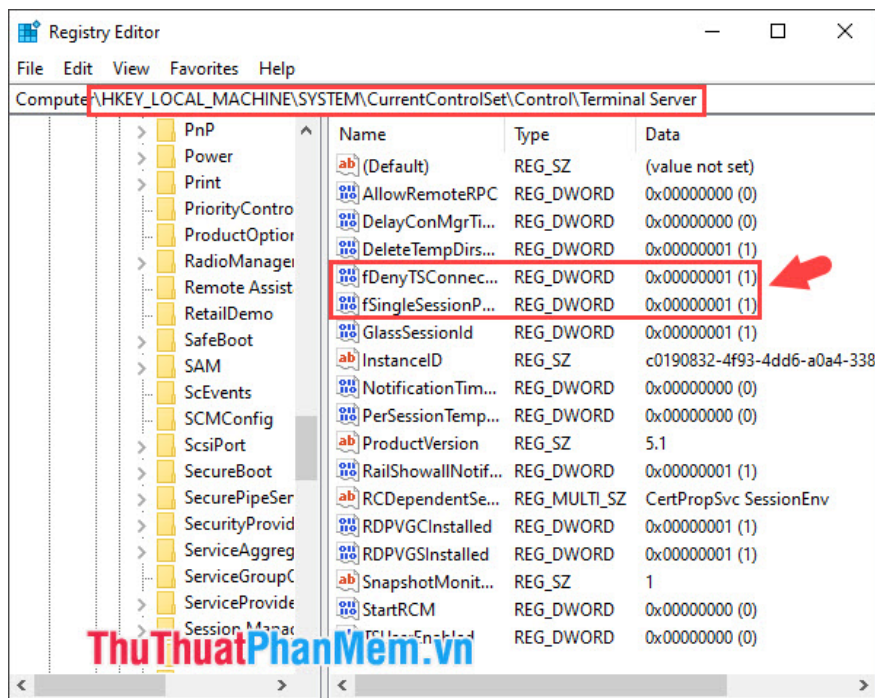
Method 2. Edit in the registry

Step 1: You press **Windows + R** combination to open the **Run** dialog box . Next, enter the command **regedit** (1) => **OK** (2) .

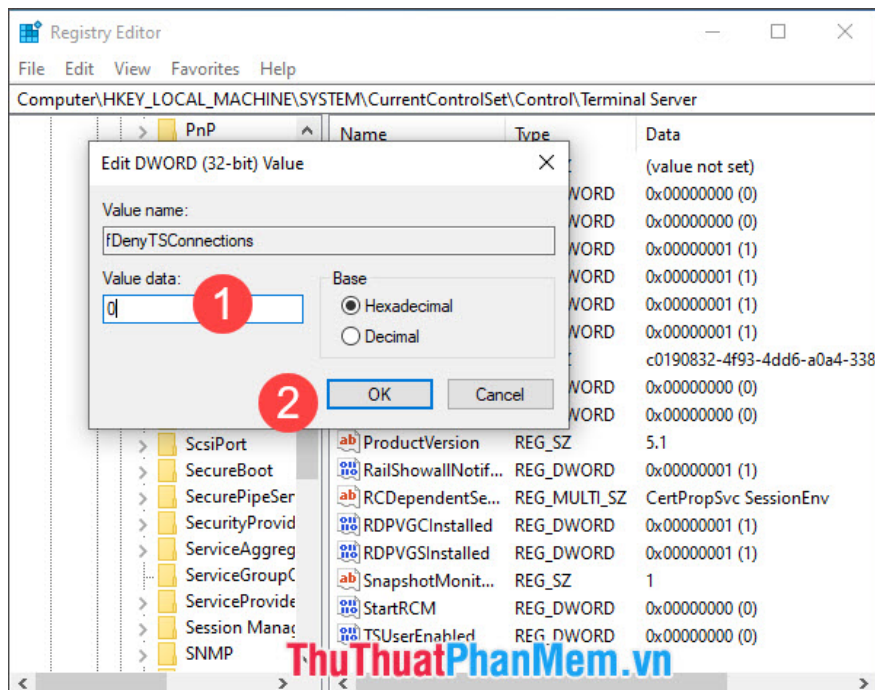


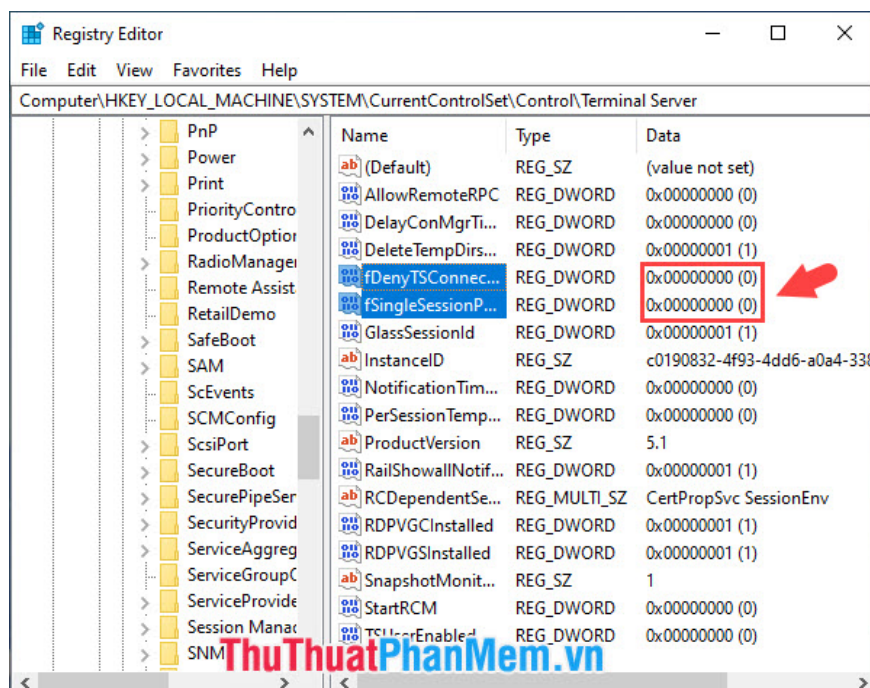
Step 2: You access the following key:
HKEY_LOCAL_MACHINE\SYSTEM\CurrentControlSet\Control\TerminalServer

Then you need to click on each item **fSingleSessionPerUser** and **fDenyTSConnections** to convert to a value of 0.



Step 3: Next, change the **Value data** to **0 (1) => OK (2)**.





After setting the above two values ??with **Value Data** equal to **0** , restart your computer to apply the new settings.

With instructions to increase the number of connections on the Remote Desktop, you can easily use multiple devices on a Remote desktop. Please combine both ways to achieve the best results! Good luck!

You finished reading the article "**How to increase the number of Remote Desktop connections**" edited by the [TipsMake](#) team. We hope this article has provided you with many useful tech tips and tricks. You can search for similar articles on tips and guides. Thank you for reading and for following us regularly.