

# How to increase C drive space in Windows 11/10/8/7

Are you running out of space in drive C (system partition) where the operating system is located? Do you know how to increase C drive capacity without losing data?

In this article, Tipsmske will introduce some solutions to safely increase system partition capacity without formatting or reinstalling the operating system in Windows 11/10/8/7.

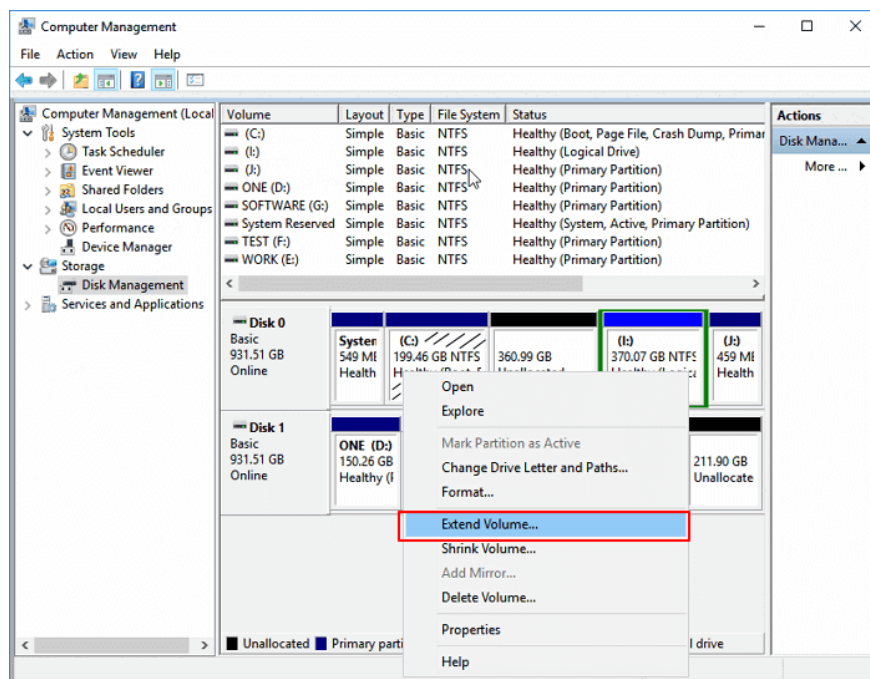
## Method 1: Increase C drive capacity in Disk Management

Windows Disk Management provides volume extension feature, which can increase partition size by adding unallocated disk space and this process does not cause data loss. But not all partitions can be extended in Disk Management, such as unallocated space can only be added to adjacent partitions.

### Increase C drive capacity with adjacent unallocated space

**Step 1 :** Right-click the **This PC/My Computer** button > **Manage** and select **Disk Management** under **Storage** .

**Step 2 :** Right click on C drive in **Disk Management** and select **Extend Volume** option .



**Step 3 :** Place and add more space to your system C drive, then click **Next** to continue.

**Step 4** : Click the **Finish** button when the process is complete.

### **Disk Management limitations in increasing C drive capacity**

- **Extend Volume** option is available for NTFS partitions and FAT32 partitions. exFAT partitions are not supported.

- There must be unallocated drive space adjacent to the partition you want to extend and unallocated space on the right side in order.

Therefore, if there is no free drive space next to C drive (usually on the right side), the Extend Volume option will be grayed out. In that case, you can delete the adjacent partition to get unallocated space and then add it to C drive or you can move drive space from another partition to C drive using our software. third-party.

### **Expand C drive without unallocated space or without continuous unallocated space**

To add unallocated space to C drive:

**Step 1** . Right-click **This PC/My Computer** and select **Manage > Disk Management** .

**Step 2** . Right click on the adjacent partition next to drive C (default is drive D) and select **Shrink Volume** .

**Step 3** . Enter the desired capacity and click **Shrink** to confirm.

Click Shrink

**Step 4** . Right click on local C drive and select **Extend Volume** .

**Step 5** . Follow the on-screen instructions to add space to your system's C drive.

## **Method 2: Expand C drive using EaseUS Partition Master software**

EaseUS Partition Master is an easy-to-use disk partitioning tool for your PC. Partitioning and cloning a drive can be a complicated task, especially if you are not familiar with computers. EaseUS Partition Master can be a useful solution in this case.

EaseUS partition management software is designed for all levels of Windows users with a simple and intuitive interface. It supports free partition management, including increasing C drive capacity, shrinking or extending partition, merging non-adjacent partitions, etc.

The latest version of the tool is as easy to use and fully functional as previous versions. For basic partition management, this is the perfect program. This tool is also available for the newly released Windows operating system, Windows 11.

It's fair to say that EaseUS Partition Master isn't the prettiest tool out there. Its interface is basic and really bland. However, for a partition management program, this is probably something most users will be willing to forgive. If you're new to partitioning or have fairly basic partitioning needs, EaseUS Partition Master is really the only tool you need to get the job done.

If there is unallocated space on the system drive, you can skip to step 2 and start by right-clicking on drive C and selecting **Resize/Move**.

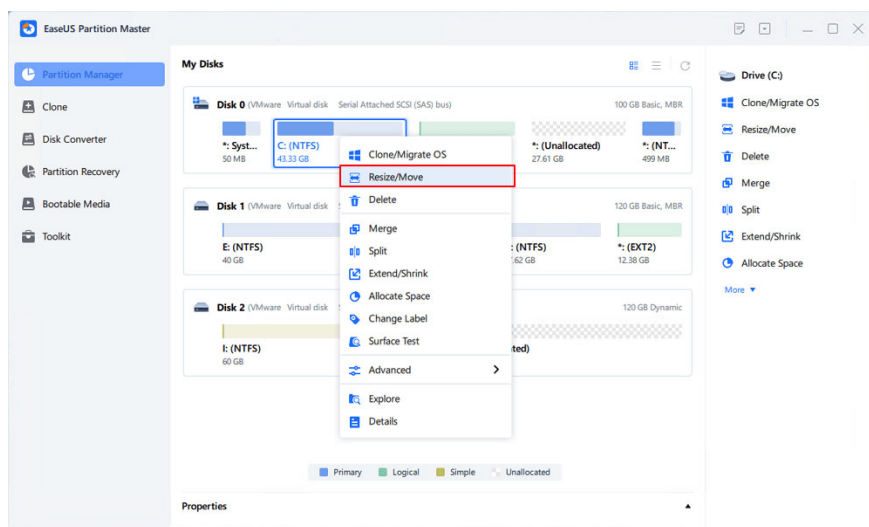
**Step 1** : Free up unallocated space for drive C.

If there is no unallocated space on the system drive, go to **Partition Manager** and right-click the partition next to C: drive and select **Resize/Move**.

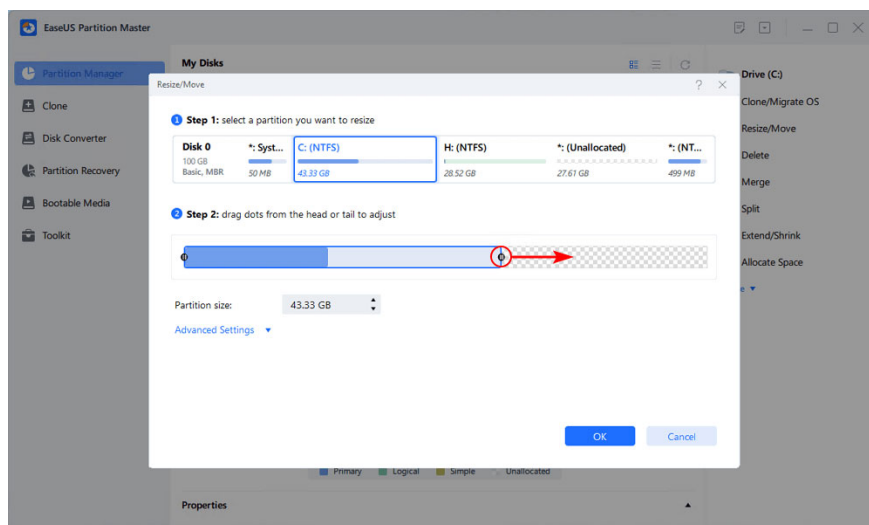
Drag the left panel of the partition to shrink and leave unallocated space behind system C: drive and click **OK**.

**Step 2** : Increase C drive capacity.

1. Right click on drive C: and select **Resize/Move**.

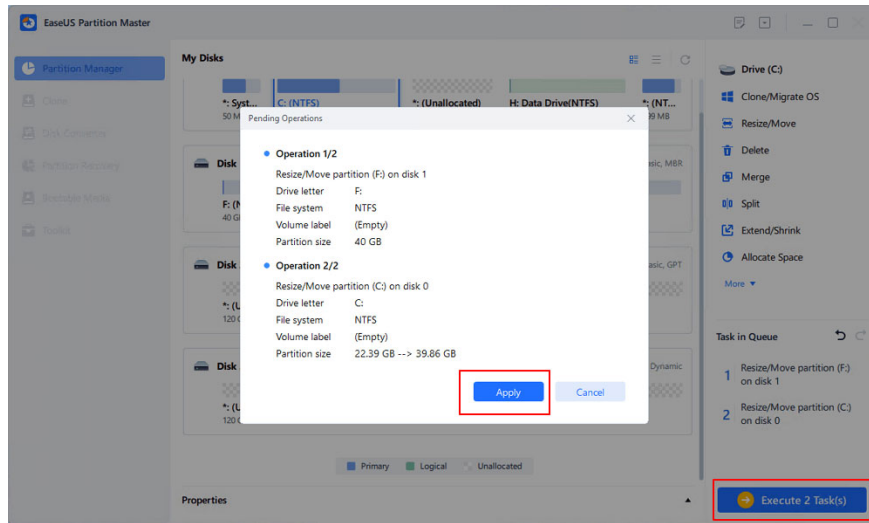


2. Drag the end of the system partition into the unallocated space to add space to C: drive and click **OK**.



**Step 3** : Keep all changes to expand C: drive.

Click **Execute Task** > **Apply** to keep all changes and expand system C: drive.

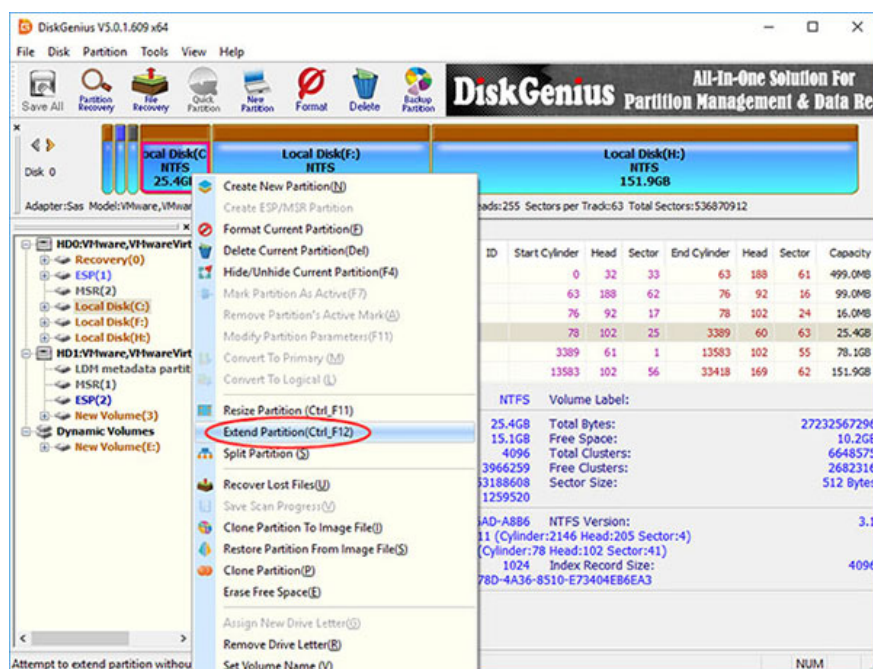


## Method 3: Expand C drive with DiskGenius Free software

If you see the Extend Volume option grayed out in Windows Disk Management, you will need to delete drive D which is the partition to the right of drive C so that you can create unallocated space and add it to drive C. You need to transfer the data from drive D to another partition or external hard drive before deleting. However, there is an ideal alternative to increase C drive space without deleting any partitions.

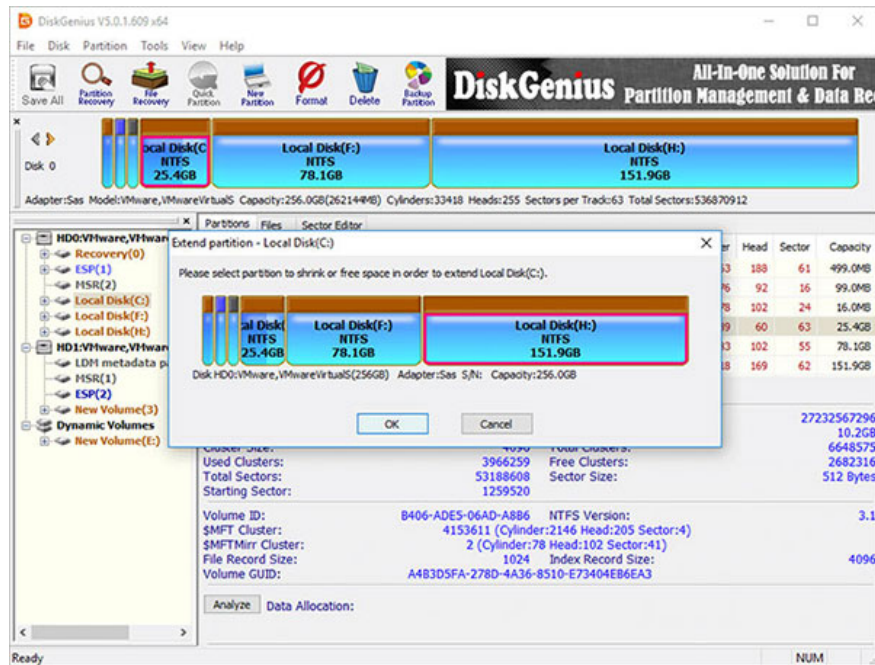
DiskGenius Free provides partition extension function and it can move free drive space from another partition to C drive directly. Besides extending partition, it can resize volume, create partition, delete partition, hide partition, clone image partition, check bad sectors, recover lost data, etc. The following step will show you how to extend C drive in Windows 10.

**Step 1 :** Download and launch DiskGenius Free Edition. Right click on the C drive you want to increase capacity and select **Extend Partition** .

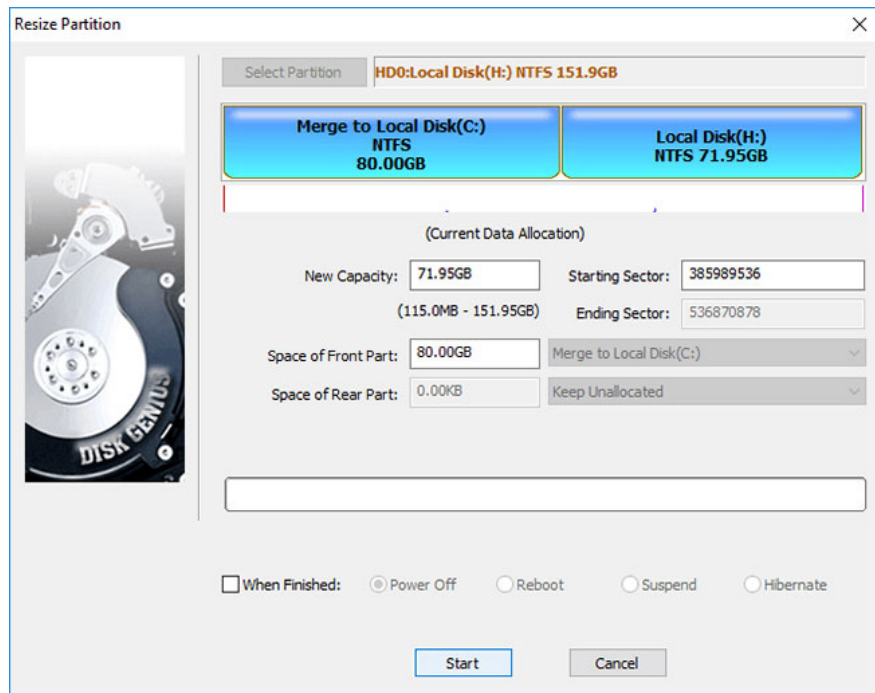


**Step 2 : The Extend Partition** window will appear. You need to select a partition with large free space and click the **OK** button.

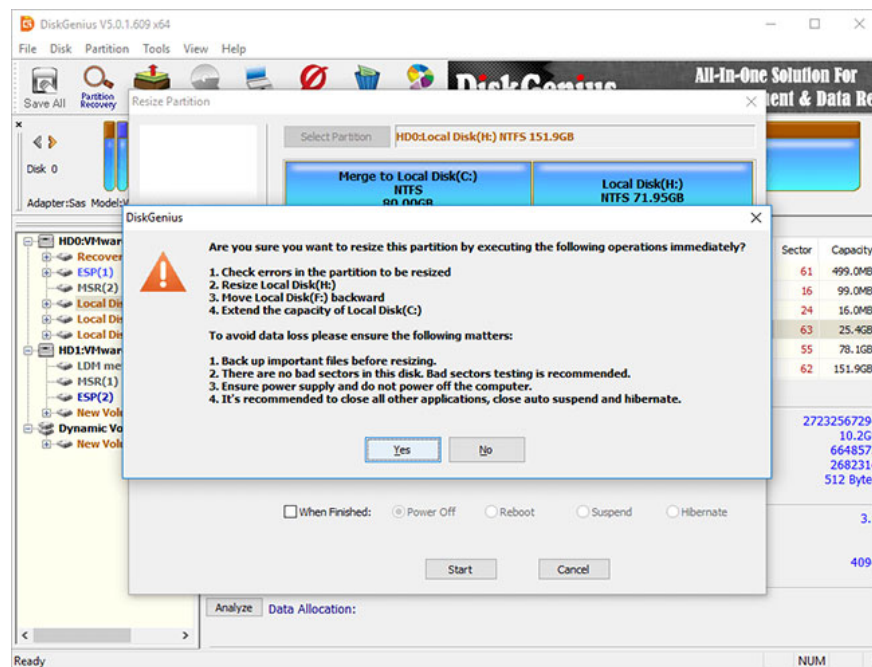
The partition selected in this step must contain enough free space, because the software will transfer free space from this partition to drive C.



**Step 3 :** Set the drive space to be transferred to C drive and click the **Start** button. You can drag the partition bar to set the partition capacity or enter the exact capacity in the column.



DiskGenius lists the steps to take during the resizing process and the things you need to keep in mind. Click the **Yes** button to continue.

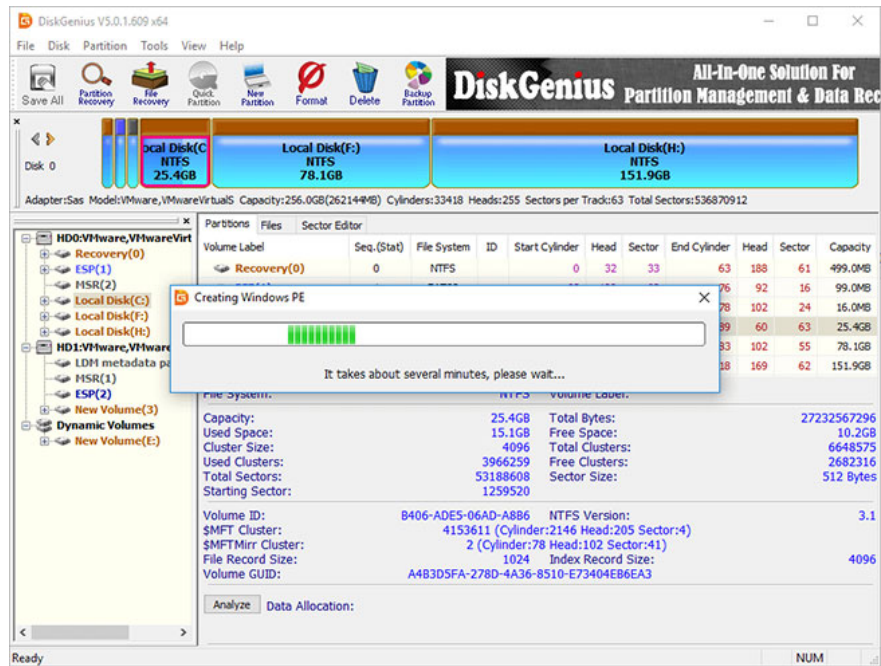


### Note:

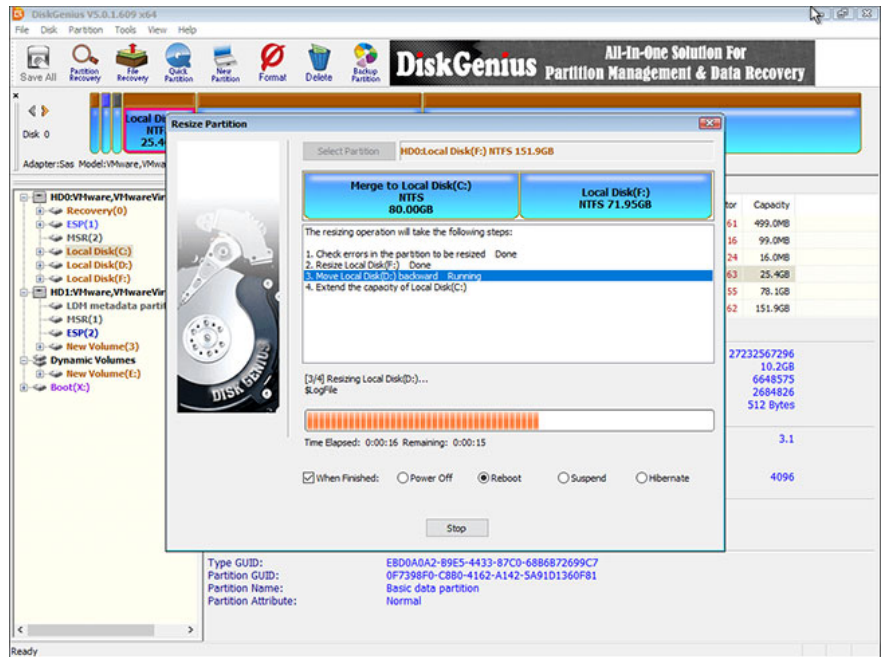
Resizing a partition involves too many operations, such as modifying the partition start and end positions, changing parameters in MBR and DBR, moving data, etc., so it's too This process is not without risks even if the partition management software works properly. Therefore, the following should be ensured for the expansion process to finish successfully:

1. There are no disks, especially related partitions.
2. Make sure the power supply is working properly and do not turn off the computer before the partition resizing process is finished.
3. Close all other programs that are accessing the space moved partitions.
4. so that the computer does not go into hibernation mode during the process of expanding C drive.

Since the extended partition is the system partition, DiskGenius will boot into its WinPE version to complete the remaining operations. Now the WinPE environment will be prepared for the DiskGenius WinPE instance, then the computer will automatically reboot to the WinPE instance.



Now, DiskGenius WinPE instance is launched automatically and continues to expand C drive, as below. When the resizing process is complete, the computer will automatically restart Windows.



## Method 4: Increase system partition size using diskpart command

The DiskPart command-line utility is part of the Microsoft Windows family (Windows 8, 8.1, 7, Vista, XP, and Server 2003). DiskPart is a text-mode command interpreter. This tool allows you to manage objects (drives, partitions or volumes) using scripts or entering them directly at the command prompt. Diskpart is a built-in Windows utility and it includes the function of managing drives and partitions through commands.

It allows you to create, delete and format partitions on your hard drive. Diskpart is capable of creating primary and extended partitions as well as logical drives within an extended partition. You can also use diskpart to place an active partition on the drive. Additionally, diskpart can be used to assign a drive letter and mount a drive. Diskpart commands can be executed from the Windows command prompt or in a batch file.

To use diskpart, you must first open Command Prompt. When the Command Prompt window opens, type "**diskpart**" and press **Enter**. This will launch the Diskpart utility. You can enter various commands to manage your disk partitions. For a complete list of available commands, enter "help" at the diskpart prompt.

You finished reading the article "**How to increase C drive space in Windows 11/10/8/7**" edited by the [TipsMake](#) team. We hope this article has provided you with many useful tech tips and tricks. You can search for similar articles on tips and guides. Thank you for reading and for following us regularly.