

# How to identify SSD hard drive is real or fake

Currently, clone SSD drives are rampant with many sophisticated tricks so users are easily fooled. Therefore, use the following tips to avoid buying poor quality SSDs.

SSD (solid-state hard drive) is very popular and used as an operating system drive for the computer to reduce the time to start up the computer, start the program. However, there is a problem that many people are concerned about with their affordable price, but don't know the quality of these SSDs like?

In fact on the market today, cloned SSDs are appearing rampant with many sophisticated tricks so users are easily fooled. Counterfeit SSDs have very similar packaging and product designs, but for less speed and durability. So how to distinguish SSDs from real or fake products? Soon we will give you some tips to help you avoid buying a bad quality SSD.

1. Differences between SSD and HDD hard drives
2. How long can an SSD drive "live"?
3. Find out how SSD drives work

## Instructions for checking fake and poor quality SSD hard drives

The simplest way to distinguish poor quality SSDs and genuine SSDs is to rely on distribution stamps. If you see that the stamp is fuzzy and unclear and there are signs of blurring then it is definitely a fake stamp. In contrast, the manufacturer's parameter stamp on genuine SSD will be neatly aligned, aligned, and not misleading.

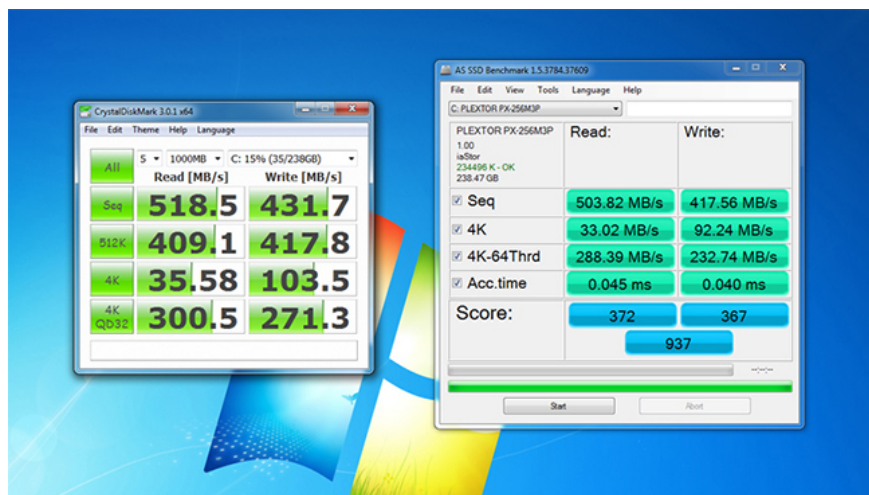


However, the only way to know above is not enough, because as said above the "bad" SSD is increasingly counterfeited so it is difficult to distinguish if only by external senses, especially those of SSD running bootrom

is indistinguishable.

Read here, many of you will wonder what bootrom is? In essence, it is a technology that uses virtual hard drive on the server via a LAN connection, without using a hard drive on the machine. If you use bootrom in a room with 20-30 computers, it will save that hard drive. Bootrom offers the convenience of software updates, management and operation, and helps save electricity. These bootrom SSDs in net rooms, games will usually be discharged after about 6-9 months of use. Although there is a warranty period, they are very 'diapers', so users who are unwise will be able to buy this type of bootrom SSD very easily.

Therefore, the best way to check if an SSD is genuine or fake is to use software such as CrystalDiskInfo, CrystalDiskMark, HD Tune Pro, . or genuine software like Samsung Magician, Kingston Manager, . These software will display all the information such as the read-write speed, usage time and SSD series number - these are the data that help you identify the cloned SSD. If you find that the series number does not match or the read-write speed is too low compared to the manufacturer's specifications, it is almost 100% fake. In addition, in case the parameter of using time is too much, the restart time is low and inadequate, there is no debate, the SSD you are holding is SSD running bootrom.



Currently, 2.5-inch SSD hard drives connected by SATA to some well-known brands such as Kingston, Samsung, etc. are pretty much fake, readers need to pay attention to avoid buying 'bad' products. Hopefully with these tips, you will choose for yourself an SSD drive.

Besides, you can also refer to some of the best SSDs for Windows 2018 computers, these suggestions will help you get the best choice.

See more:

1. Things to know when upgrading hard drives to SSDs for laptops
2. 5 ways to check hard drive effectively to help periodically check the hard drive
3. 7 reasons to upgrade to an SSD

You finished reading the article "**How to identify SSD hard drive is real or fake**" edited by the [TipsMake](#) team. We hope this article has provided you with many useful tech tips and tricks. You can search for similar articles on tips and guides. Thank you for reading and for following us regularly.