

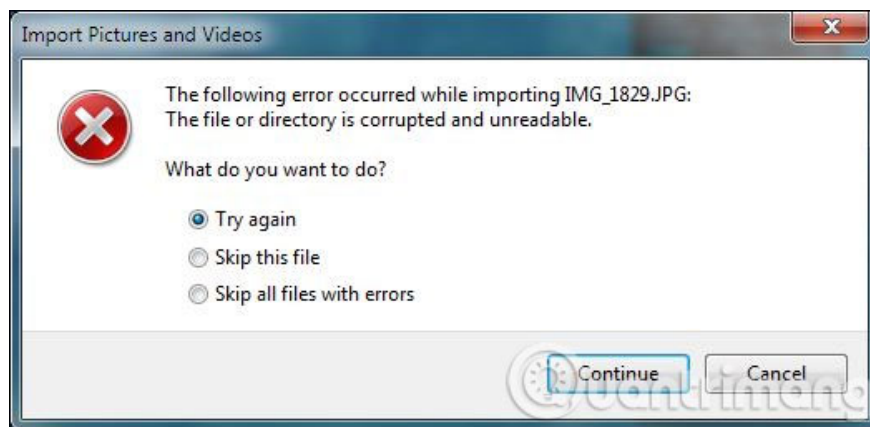
# How to identify hard drive failure, hard drive failure, bad hard drive on Windows

How to know the hard drive is corrupted, the hard drive is bad, bad? If your computer has the following signs, the chances are great that it already has a problem, be prepared to take it to repair or replace the new hard drive.

After a certain period of use, electronic components in general, computer components in particular will begin to encounter "problems" and the hard drive is no exception. If you often suffer from the following errors, it means that the **hard drive is** corrupted and it is time to "replace new clothes" for your hard drive. Parallel to that, do not forget to back up important data to an **external hard drive** or use online services like Dropbox, OneDrive.

## Corrupted error message when accessing data

In the process of retrieving data, if you frequently encounter a "Corrupted" message when opening one or more files, it is certain that these files are completely free from closing. improperly or vandalized.



In addition, if you often encounter data that has just been saved, "disappear" without any impact from you. If this is the case, make sure the computer system has a problem, and more specifically, the hard drive.

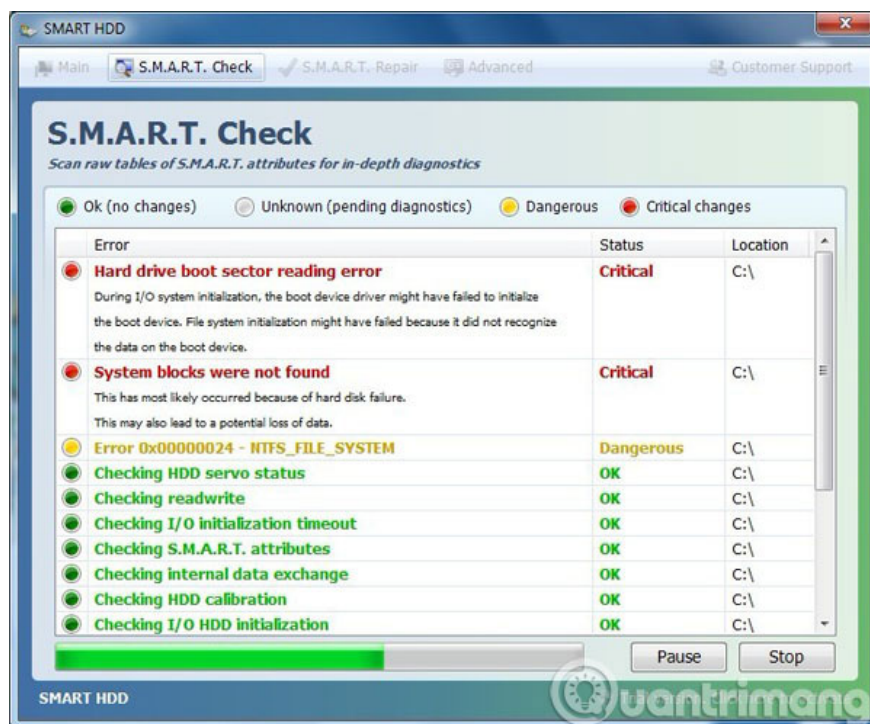
## Sticky error Bad Sector

In the process of accessing data from the hard drive, the error that we most often encounter is Bad Sector. These are hard drive areas that fail to maintain data integrity, they will gradually occupy the capacity of the hard drive, if the data is saved in bad sectors, then it is difficult to be safe.



## Testing SMART gives incorrect results

Computer hard drives use **SMART** data (Self-Monitoring, Analysis, and Reporting Technology) to assess reliability and determine whether there are errors. Therefore, you can view SMART data in the hard drive to detect upcoming problems with your hard drive.

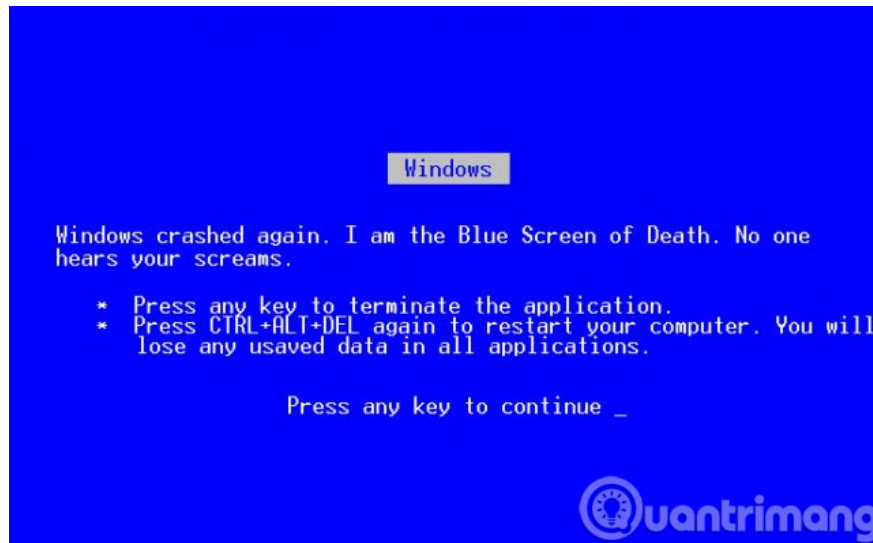


There are many tools that predict hard drive errors by reading SMART data in the hard drive recorded by the operating system. Like most of the other phenomena listed above, SMART data sometimes has errors during operation and "disaster" will occur just before SMART warns.

If you want to test the SMART data of the hard drive yourself to "diagnose" the situation, you can use reliable tools like **CrystalDiskInfo** , **HD Tune** , **HDD Health** or **HDD Scan** . All are almost completely free and give quite accurate results so you can safely use it.

## The computer hangs and a blue screen appears

In addition to the above signs, the status of your computer is becoming more or less sluggish or hanging or more serious is the appearance of a series of errors related to the system and software that are typically blue screens "die "you should proceed to back up data immediately.



However, you should try to reinstall the operating system for the computer to see if the status still exists, if so, then the computer's hard drive is definitely having problems. And the replacement is the right thing to do.

1. 5 mistakes easily "kill" SSDs
2. Advice on buying an external hard drive
3. How to replace hard drive for Laptop?

You finished reading the article "**How to identify hard drive failure, hard drive failure, bad hard drive on Windows**" edited by the [TipsMake](#) team. We hope this article has provided you with many useful tech tips and tricks. You can search for similar articles on tips and guides. Thank you for reading and for following us regularly.