

How to hide Microsoft Edge icon on Internet Explorer Windows 10

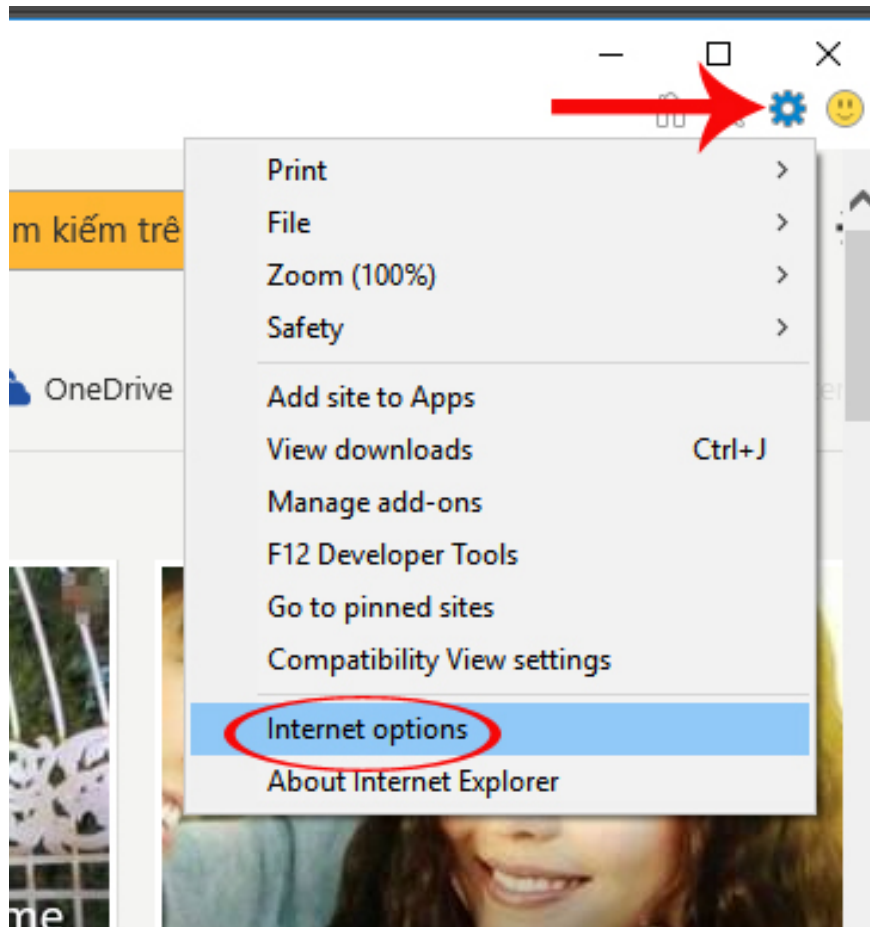
On Windows 10 devices, the Microsoft Edge browser icon will appear in the Internet Explorer browser address bar. So how to remove the Microsoft Edge icon from IE?

Some users when using Windows 10 version will see the Microsoft Edge browser icon appear in the address bar of Internet Explorer. If you accidentally click on it, Microsoft Edge browser will be automatically opened. This annoys some users, as Microsoft Open Edge interferes with the work being done, and they will have to turn off that browser to continue working. So how to remove the Microsoft Edge icon from IE? In the following article, we will show you how to remove the Edge icon in IE.

Method 1: Change settings on IE browser

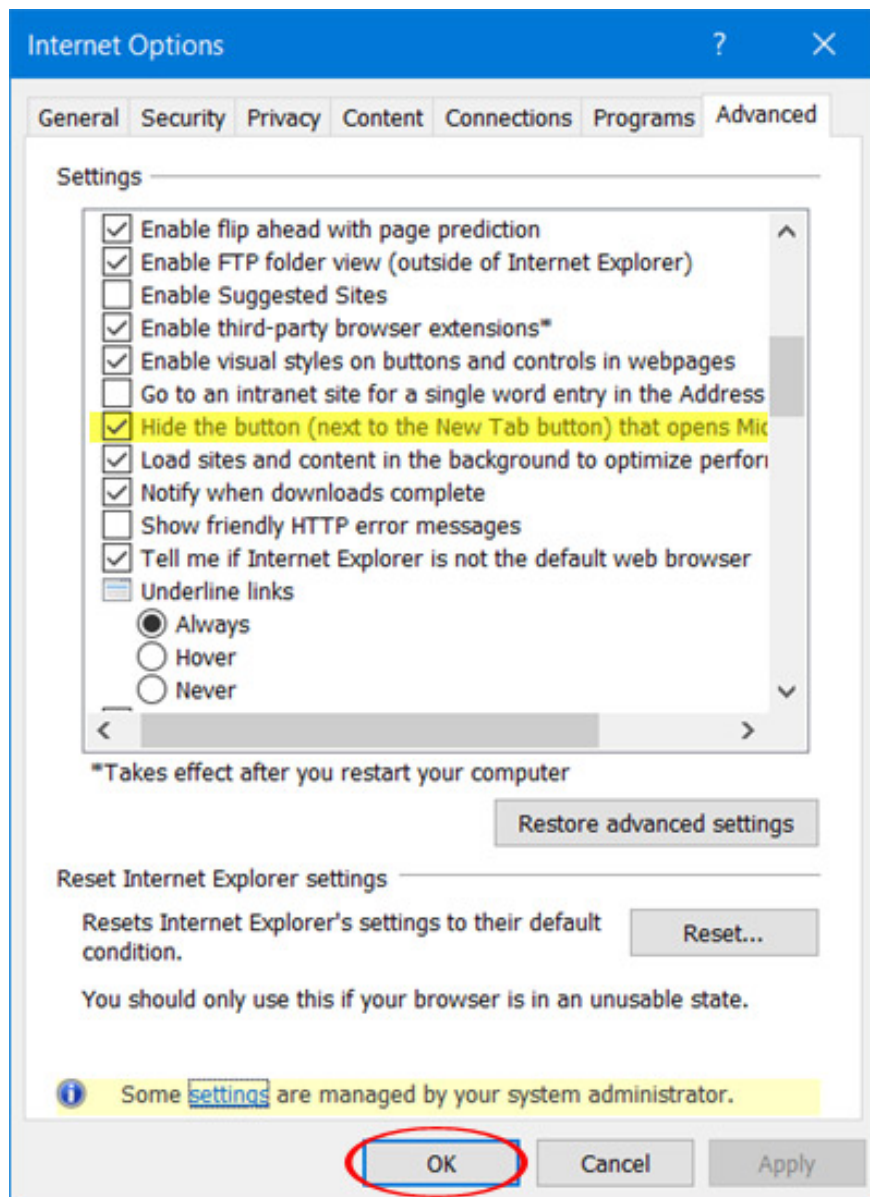
Step 1:

You open IE on your computer. At the home page interface, click on the **alias icon** and select **Internet Options** .



Step 2:

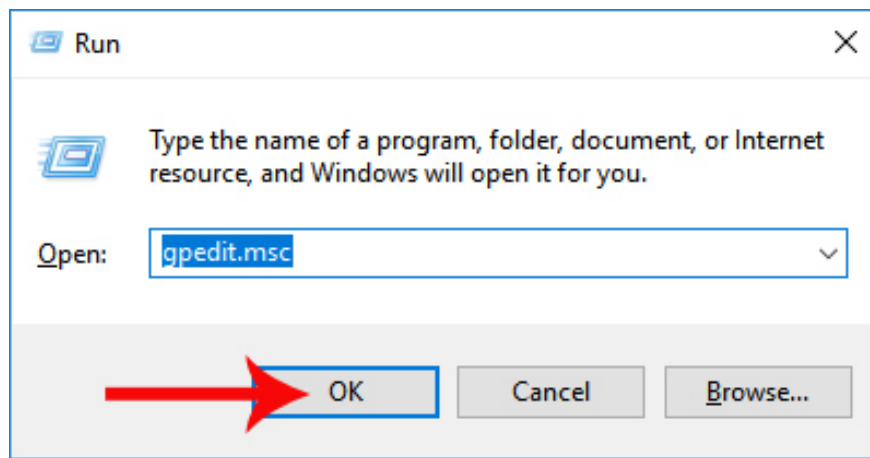
Appearing on the Internet Options interface, go to the **Advanced tab** and look down to select **Hide the button (next to the New Tab button)** to hide the Microsoft Edge icon in IE. Finally click **OK** to save.



Method 2: Adjust in Local Group Policy Editor

Step 1:

First of all, press the **Windows + R** key combination to open the Run window and enter the keyword **gpedit.msc**

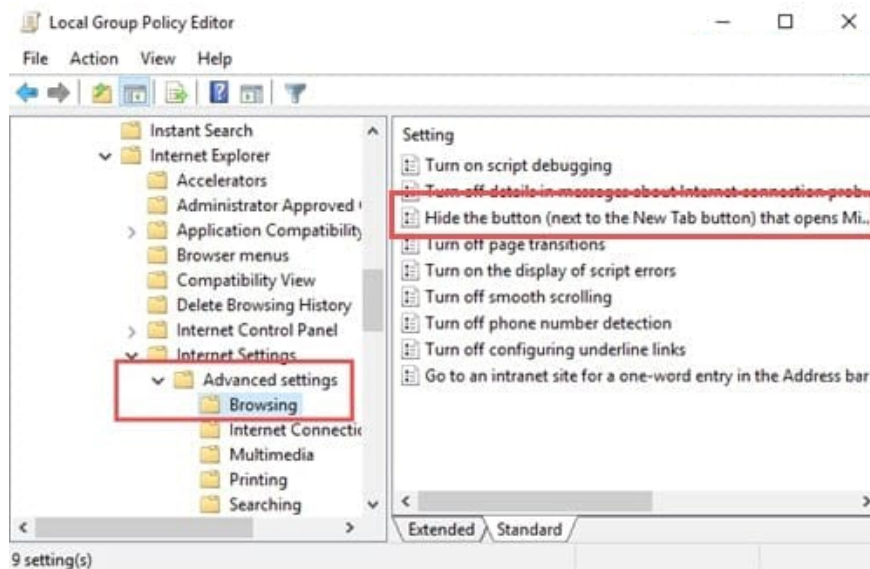


Step 2:

At the Local Group Policy Editor dialog box, we will access the following link:

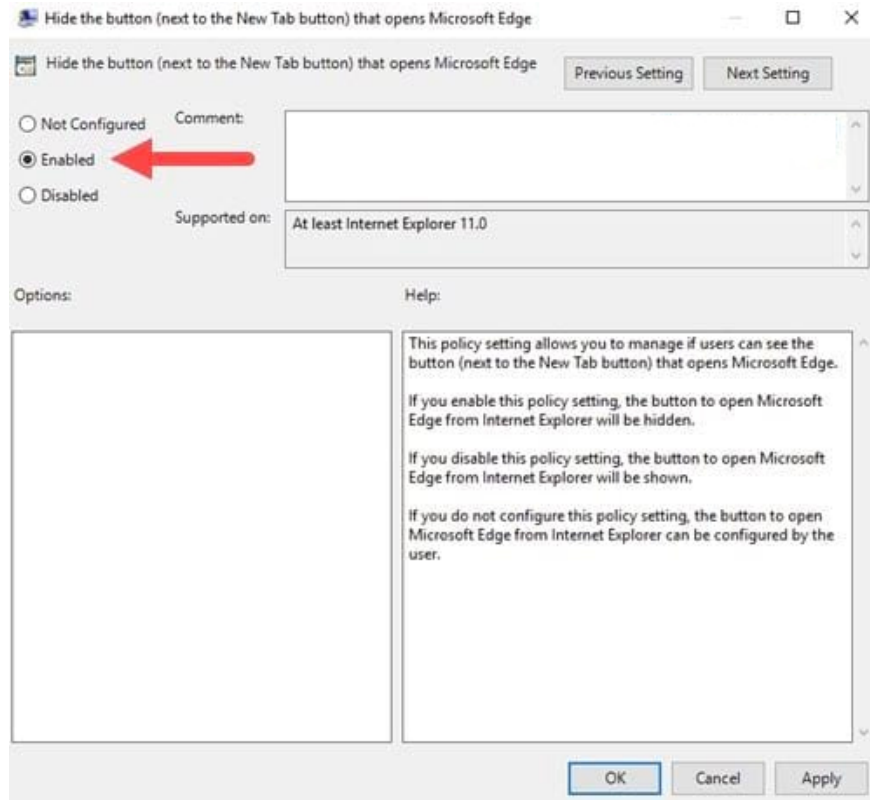
User Configuration > Administrative Templates > Windows Components / Internet Explorer > Internet Settings > Advanced Settings > Browsing

When accessing the Browsing section to the right, click on the option **Hide the button (next to the New Tab button) opens Microsoft Edge**.



Step 3:

Appeared interface Hide the button (next to the New Tab button) Opens Edge, users will click on **Enabled** to hide the Microsoft Edge icon in IE. Click **OK** to save the changes.



The final action is that we will reload the IE browser and we will see there is no Microsoft Edge icon in the access bar anymore. If you do not like the Microsoft Edge logo and do not want to click on this icon regularly, you can follow the above method to turn it off.

Refer to the following articles:

1. How to enter the saved password on Internet Explorer to Edge browser
1. How to remove 'FindYourMaps' toolbar in Internet Explorer, Chrome and Firefox browsers
1. Instructions to turn off the proposal to save passwords on the Web browser

You finished reading the article "**How to hide Microsoft Edge icon on Internet Explorer Windows 10**" edited by the [TipsMake](#) team. We hope this article has provided you with many useful tech tips and tricks. You can search for similar articles on tips and guides. Thank you for reading and for following us regularly.