

# How to hide hidden WiFi network SSID on Windows 10

Hidden SSID is a WiFi security feature called WiFi hidden, which helps you protect WiFi to avoid unauthorized access to WiFi network. So how to detect the hidden WiFi connection network on Windows 10?

Each WiFi network has a separate SSID (Service Set Identifier) name to distinguish between different WiFi networks. And when we proceed to detect WiFi, SSID will automatically show up so that you can know and conduct WiFi connection via that SSID. However, if you do not want others to see the SSID, you can use the WiFi Hidden SSID security feature, also known as the hidden SSID.

This method will hide the network name and so when conducting a search using a laptop or mobile device, we will not see the network name displayed in the list. In fact, Hidden SSID is not always absolutely safe, as there are now many tools to detect hidden networks. The following article will guide you how to detect hidden WiFi networks on Windows 10, as well as connect to hidden WiFi.

1. Connect your Windows 7 computer to the hidden Wifi network
2. How to turn on and turn off Wifi on laptop very fast
3. How to know who is "using the temple" Wifi your home or not?

## 1. How to detect hidden WiFi networks:

As mentioned above, Hidden SSID is a method that many people choose to secure their WiFi network. But that way is actually not safe and secure by implementing security methods for WiFi.

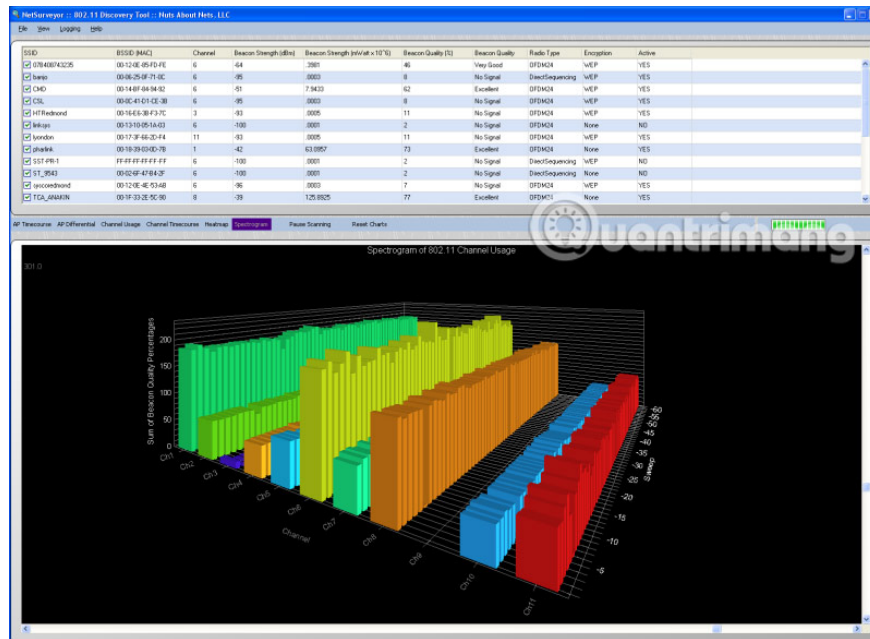
Currently there are some software that detect hidden WiFi networks. These software will help you detect hidden WiFi networks, connect to these WiFi networks and check the speed of hidden WiFi networks.

### 1. NetSurveyor software

1. Download NetSurveyor software

NetSurveyor will help users to verify that your network is set up correctly, areas with weak, weak WLAN coverage interfere with your network.

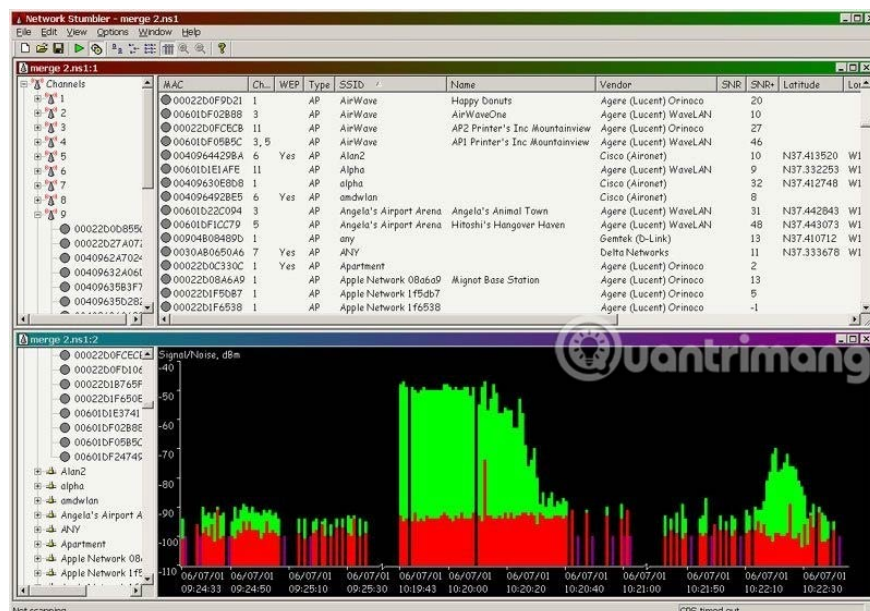
The software will process the collected information and send the report to the user in the form of charts and different display values. NetSurveyor supports most of today's wireless network devices.



## 2. NetStumbler hidden WiFi detector

### 1. Download NetStumbler tool

NetStumbler has the same features as NetSurveyor but is only suitable for older systems. The software will search the network, detect wireless networks. However, NetStumbler has not met, recognizing all new WiFi adapters (WiFi cards).



## 3. Kismet tool connects offline WiFi

### 1. <https://www.kismetwireless.net/download.shtml>

Kismet has a more complex use than the above two tools, as it is an open source network intrusion detection and detection system. To use this tool, we need to compile the software. How to use Kismet, read the Kismet homepage on the link above.

## 2. How to connect hidden WiFi network on Windows 10:

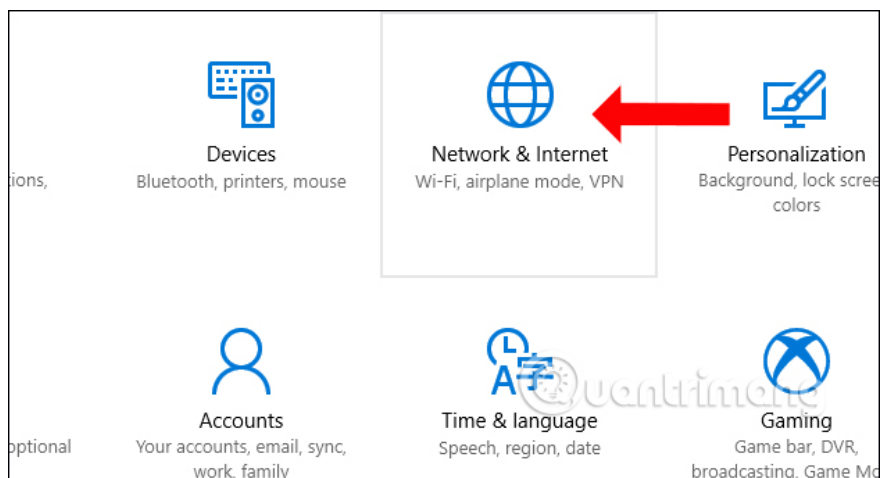
After we have used the above software to search for hidden WiFi networks, we can connect to the hidden WiFi network.

First of all you need to have the following information:

1. SSID (hidden SSID): The name of the hidden WiFi network.
2. Security Type: Security type.
3. Security Key: WiFi password.
4. EAP Method: Security method (if using the security type of WPA2-Enterprise AES).

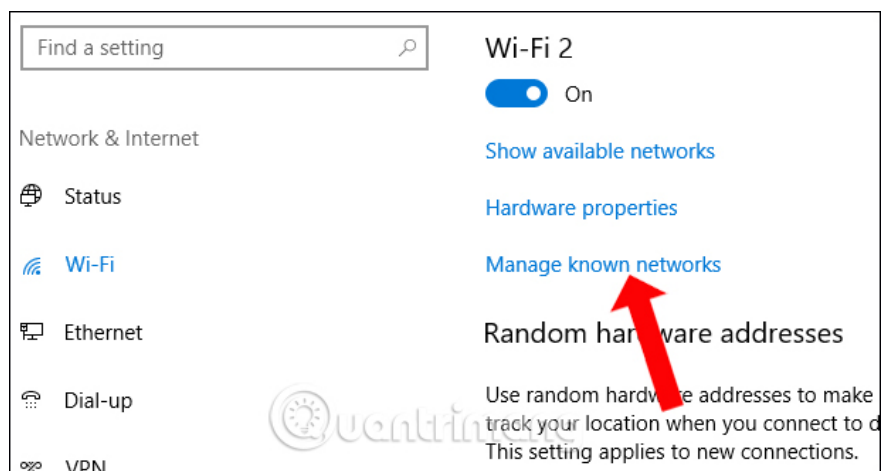
### Step 1:

First click on **the Settings icon** and then select Network and Internet in the interface. Or you can press Windows + I key combination to quickly open the **Windows Settings** interface.



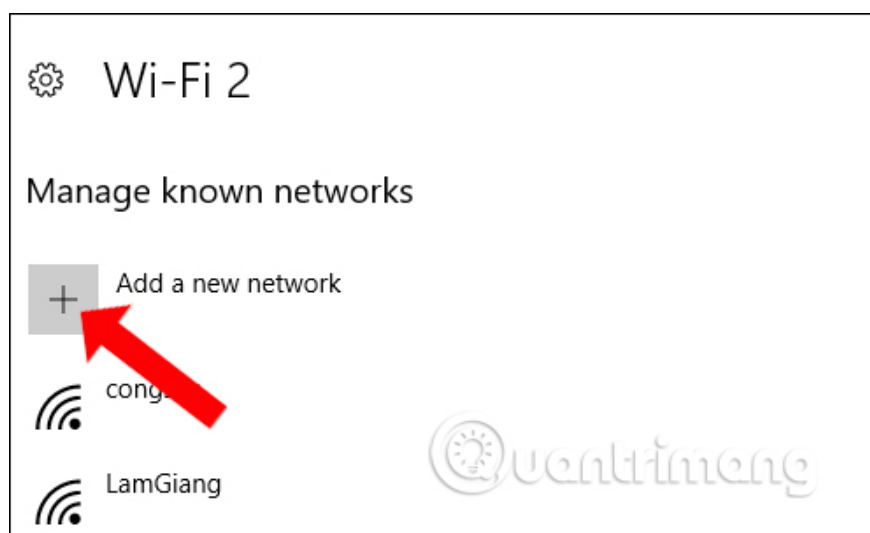
### Step 2:

In the menu on the left, click on **WiFi** and then click on the **Manage Known Networks option** .



### Step 3:

Click on the **Add a new network** button to add the hidden WiFi network on Windows 10.



### Step 4:

Enter **the hidden WiFi network name** (SSID) at Network name, **security** type at Security type, **password** at Security key. We can choose Connect Automatically to automatically connect to the network every time we enter network coverage.

**Note to the user** , do not select the option Connect even if this network is not broadcasting to secure the network. Hackers can interfere with the search process, attacking the network you are trying to connect to.

Add a new network

Network name

Security type

Open

Connect automatically

Connect even if this network is not broadcasting

Save Cancel

Above is the introduction of some hidden WiFi network detection tools, along with a way to connect to the hidden WiFi network. In general, hiding WiFi is not the safest way to secure WiFi information, by changing passwords and security for WiFi.

See more:

1. Instructions for fixing Wifi errors with yellow exclamation
2. Fix Wifi error disconnected on Windows 10, 8, 7 and Vista
3. How to play Wifi on Android phone?

I wish you all success!

You finished reading the article "**How to hide hidden WiFi network SSID on Windows 10**" edited by the [TipsMake](#) team. We hope this article has provided you with many useful tech tips and tricks. You can search for similar articles on tips and guides. Thank you for reading and for following us regularly.