

How to Hide Any Specific Drive in Windows

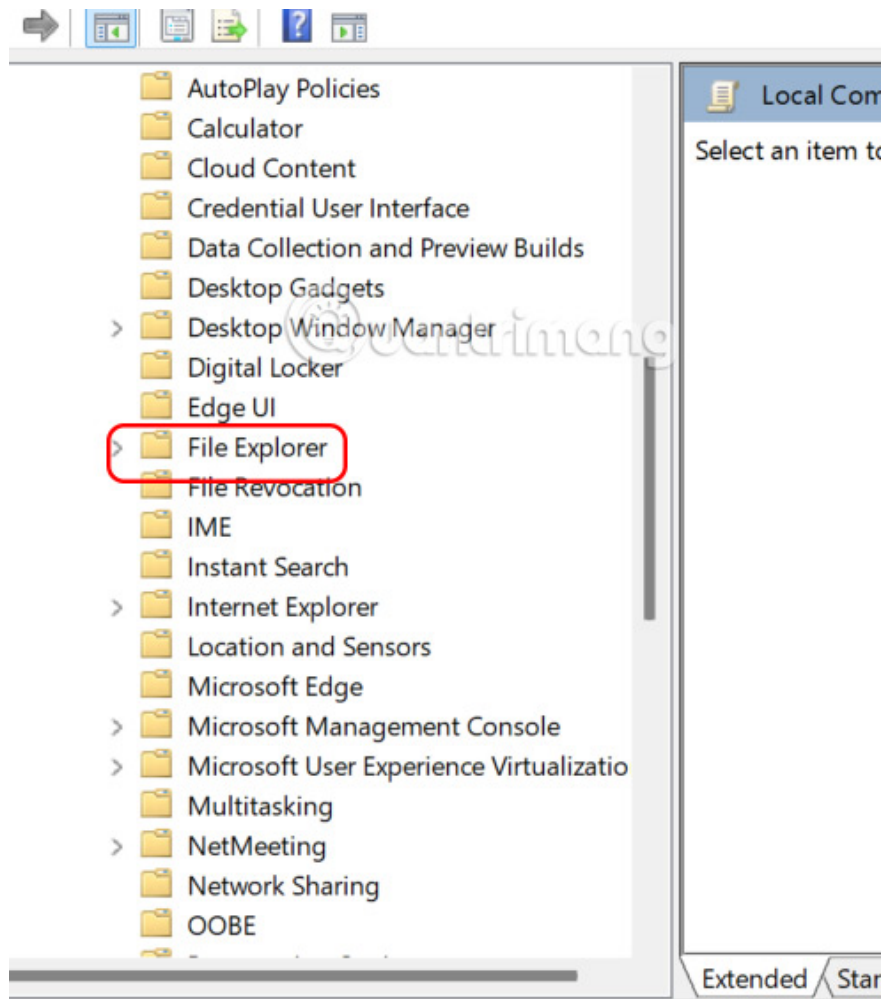
In this article you will learn how to use Local Group Policy to allow you to hide any Windows drive you want to secure the drive for example.

You can easily edit some settings in Local Group Policy to block editing Control Panel on your computer, prevent access to hard drives,. And in this article you will know how to use Local Group Policy to allow you to hide any drive you want to secure the drive, for example.

Instructions for hiding drives on Windows

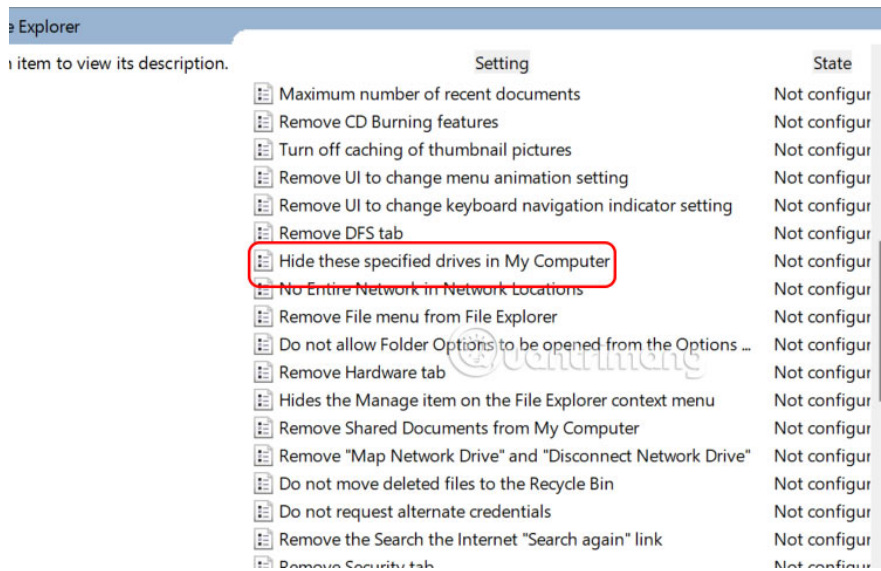
Step 1:

Users **open the Run dialog box** then **type gpedit.msc** to open Local Group Policy. Next, you access the path **User Configuration > Administrative Templates > Windows Components > File Explorer** .



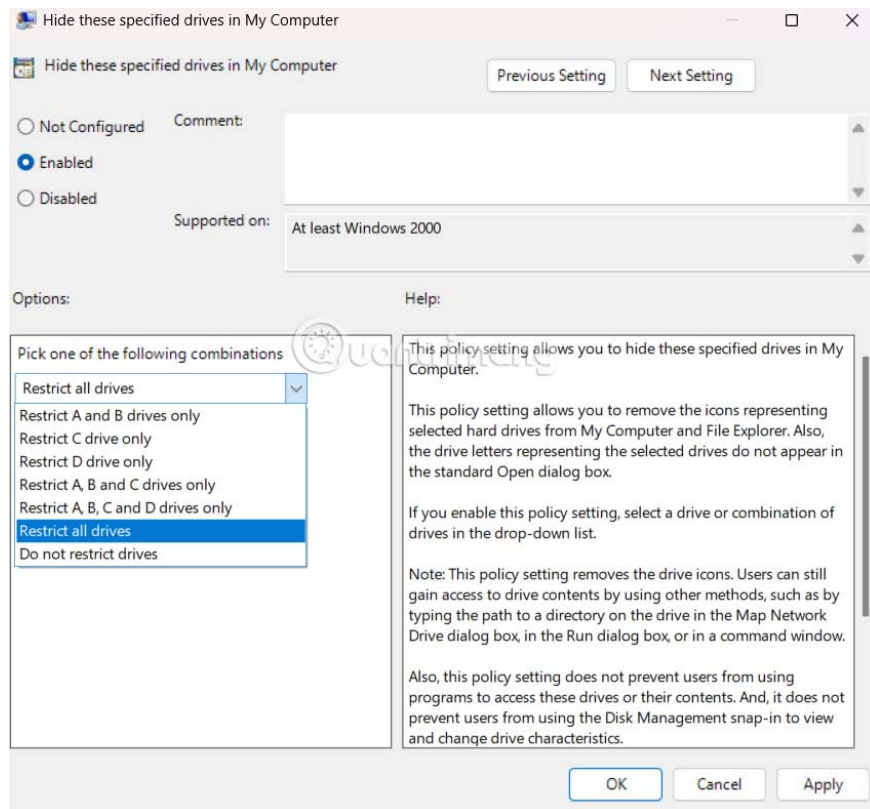
Step 2:

Look at the content next to it and click on **Hide these specified drives in My Computer** to adjust the drive hiding mode on your computer.



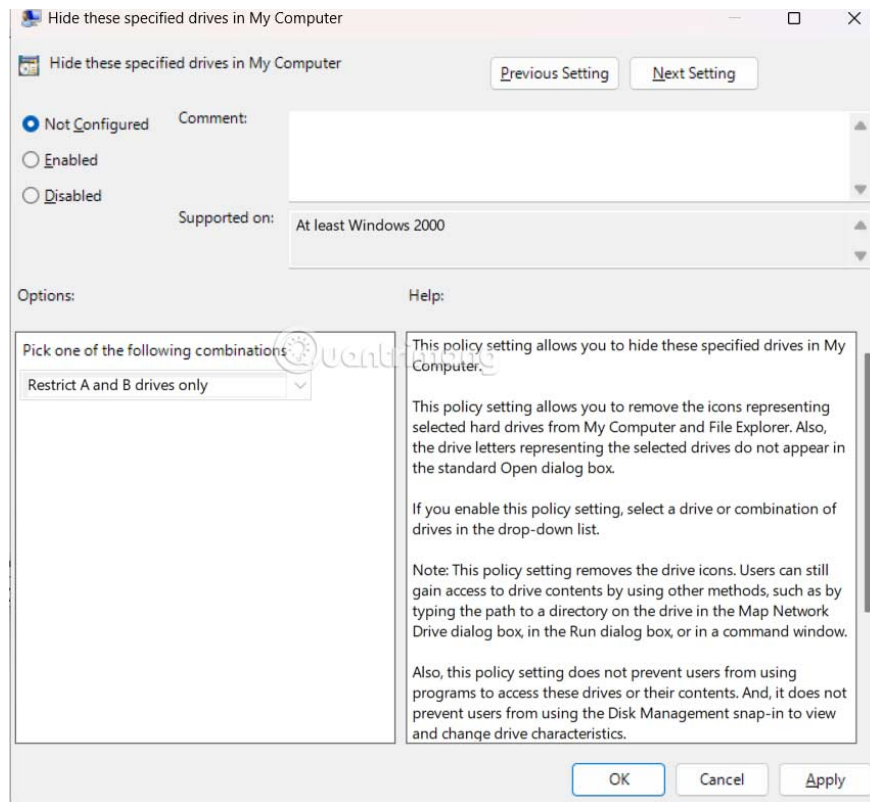
Step 3:

In the new interface, the user **clicks on Enabled** and then looks down at the **Pick one of the following combinations** section and selects the drive you want to hide on the computer.



After selecting the drive you want to hide, click **Apply** to save the changes.

To return to the old settings, unhide the drive on the computer, click on **Not Configured** and then click **Apply** to save the changes.



You finished reading the article "**How to Hide Any Specific Drive in Windows**" edited by the [TipsMake](#) team. We hope this article has provided you with many useful tech tips and tricks. You can search for similar articles on tips and guides. Thank you for reading and for following us regularly.
