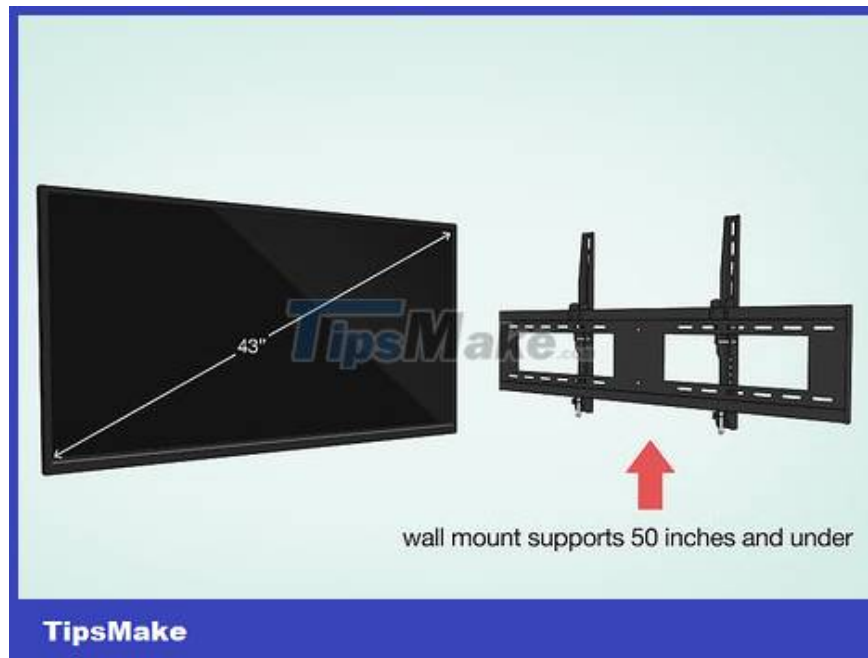


How to Hang a Flat Screen TV on a Drywall

When you hang your TV on the wall, you will get a movie theater-like experience right in your room without having to invest in expensive entertainment equipment. Although hanging a TV on a wall using drywall may seem difficult at first, today's TipsMake will show you how to do it correctly. After preparing a suitable mount for the TV, check to see if there is a frame inside the plaster wall. If so, you can drill the mount directly into the frames. If not, you need to use a butterfly switch to prevent the TV from falling down. Once completed, you can comfortably enjoy your home cinema.

Preparation stage



Prepare a mounting bracket suitable for the TV's weight. There are many different types of mounts, you need to choose based on the size and weight of the TV. Check the TV's weight in the manual or on the box and write it down so you don't forget. Then, search online or at electronics stores for a mount that fits the size of the TV.

If you want to find the right mount compatible with your TV, search online for the keyword 'mount' along with the TV model. Or you can buy a universal mount that works with many types of TVs.

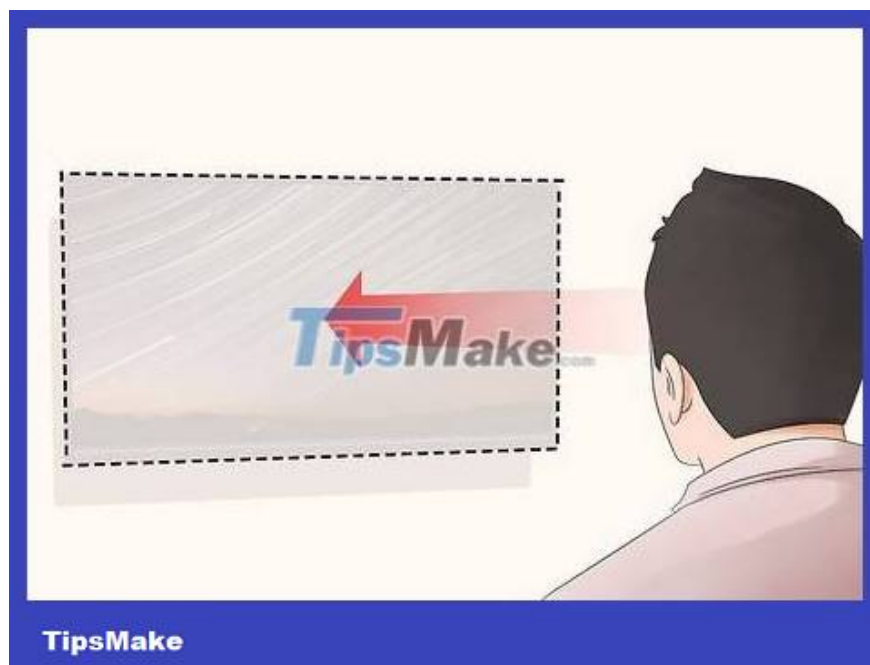
The 360-degree TV mount allows you to tilt and rotate your TV screen at any angle.

The nodding mount doesn't allow for horizontal rotation, but you can angle the TV up or down.



Tighten the screws to install the mounting bracket into the holes behind the TV. The TV mount has 2 parts: the frame attached to the back of the TV and the wall mount. After unpacking, take out the frame and place it on the back of the TV so that it lines up with the holes near the 4 corners. Use the screws that come with the mounting bracket to attach the frame to the back of the TV.

Avoid tightening too much, otherwise you may loosen the screw threads.



Determine where to hang the TV at eye level. The best TV viewing angle is when the center of the picture is right at your eye level, usually about 90-115 cm from the floor. Choose somewhere in the room to hang the TV so that multiple people can watch it without having to tilt their heads.

Have two other people hold the TV at different heights while you sit to see which angle is most comfortable.

Warning: Do not hang your TV above a fireplace because smoke and soot can damage the electronic components inside. Additionally, this angle is often too high, making it uncomfortable for viewing.



Use a wall material detector to check whether the wall has a frame or not. Point the detector towards the wall and turn it on. Move the detector slowly across the wall until a 'beep' is heard or the screen lights up. If you find a frame in the wall, you can hang the TV directly on it. If the wall does not have any frames or columns, you will need to use butterfly clamps to secure the mount.

If you don't have a wall-mounted material detector, you can tap on the wall and listen. If the sound seems special, it means there is a sound frame in the wall. If the sound comes out hollow, there is no frame in the wall.

If there is no built-in bracket in the wall where you want to hang the TV, use a butterfly switch.

Hang the TV on a wall bracket



Mark the location of the 2 wall brackets where you want to hang the TV. Use a material detector to locate two adjacent wall brackets where you want to hang the TV. Once found, use a pencil to mark the height so that the TV provides the comfortable viewing angle you previously determined on the two wall frames. Check whether the marking positions are equal in height by using a straightedge or level.

If the columns are not aligned where the TV needs to be hung, you need to use a butterfly bracket to hang the TV like a frameless wall.

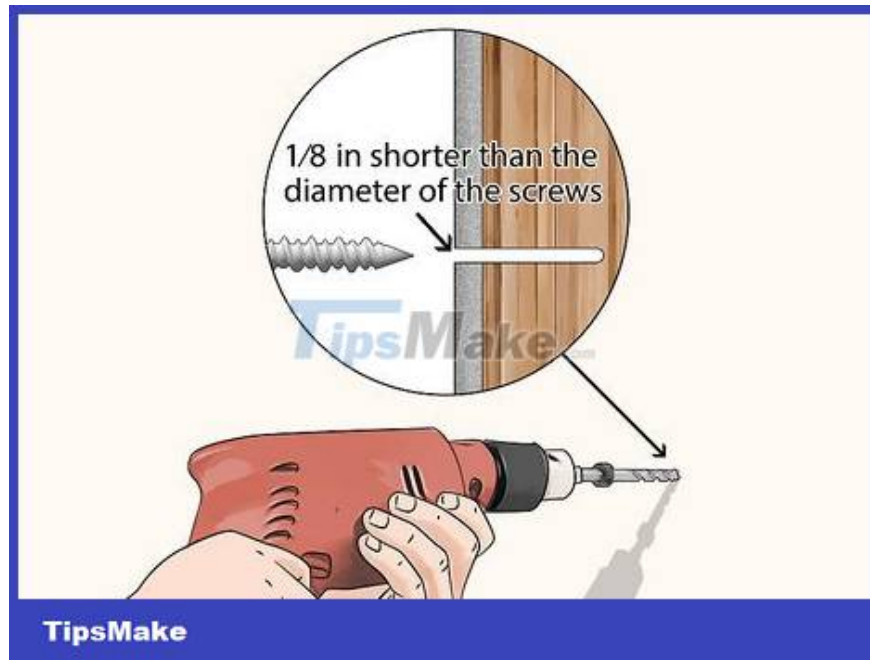
Several mounts can be attached to a single frame/pole.



Apply the TV mount to the wall to mark the holes. The wall-mounted bracket has many holes above and below. You need to apply the mount to the wall so that it is level and mark the holes in line with the inside

frame. Then, take down the mounting bracket and recheck the marked positions with a level.

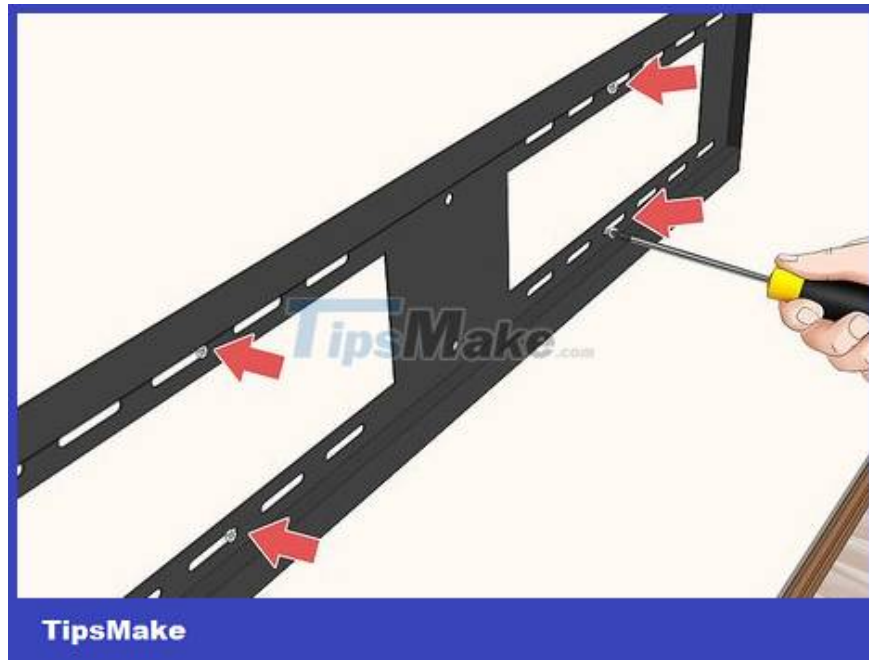
Try to get 2 holes in each frame, so the mount will be sturdy.



Pre-drill marked holes in the wall. Use a drill bit with a diameter approximately 3 mm smaller than the diameter of the screws included with the mounting kit. Place the drill bit horizontally and drill into each position you have marked.

Do not attach a mounting bracket without drilling holes first because you may break the drywall or cause the wall's wooden frame to become knotted.

Tip: If your drywall has a metal frame, you must use a drill bit intended for metal surfaces, otherwise the drill bit may break/damage.



Attach the bracket to the wall using a screwdriver. Place the mounting bracket on the wall so that the holes in it line up with the holes you just drilled. Insert the screw that comes with the mounting kit into the hole and tighten it by hand. Once the screws have been tightened by hand, use a screwdriver to secure the mount to the wall.

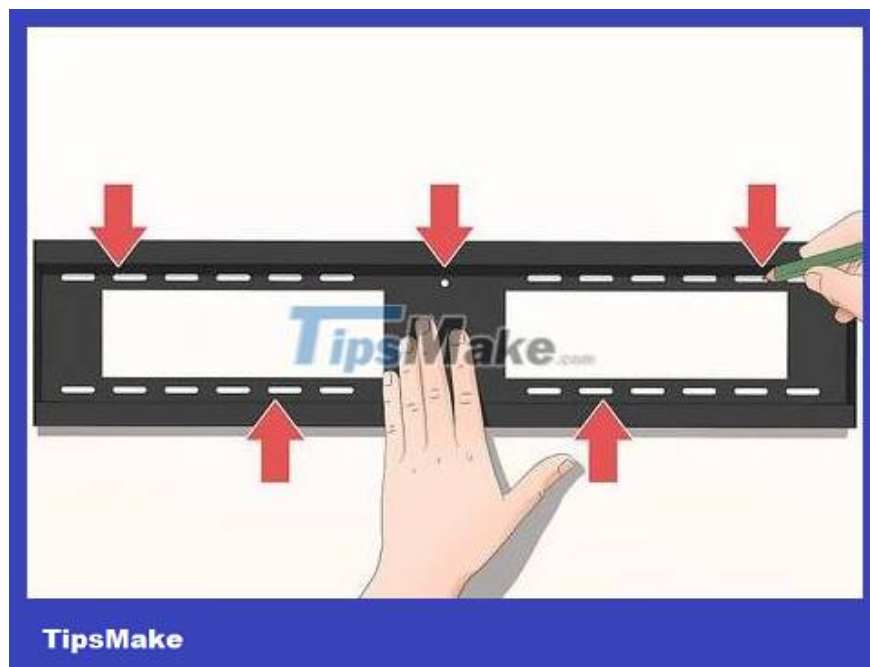
You may need to use a socket wrench if the mount uses hex bolts instead of screws.



Attach the TV to the wall mount via the hooks of the TV frame. The TV's rear mounting bracket has hooks so you can hang it on a wall shelf. Carefully lift the TV and place the hooks into the brackets located at the top of the mount. After hanging the TV on the shelf, check to see if there are screws to secure it. If so, you need to tighten it so the TV is secure.

Step back to see if the TV is balanced or not. If not, hold both sides of the TV and try turning it to adjust. If the TV doesn't move, you'll need to loosen the screws a bit to adjust.

Use butterfly switch with frameless walls

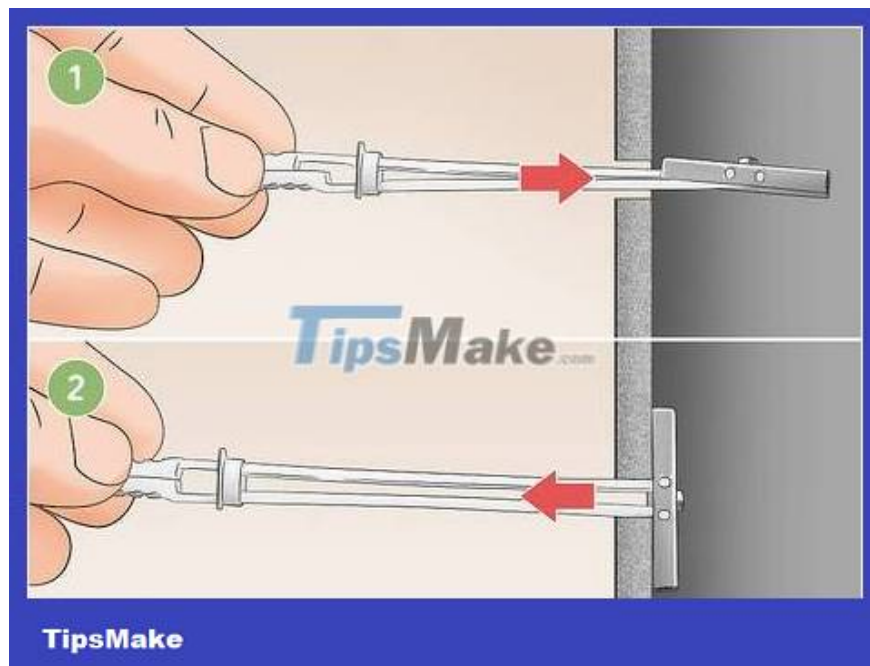


Place the TV mount on the wall and mark the location that needs to be drilled. Place the mounting bracket right at eye level that you determined earlier. Look at the holes located at the top of the mount and mark 3 holes evenly spaced. Next, mark 2 holes for the support screws on the bottom edge of the mount. Take down the mounting bracket and check whether the marking position is level or not.

Because the wall does not have a support frame, you need to use more screws so that the weight of the TV is evenly distributed.



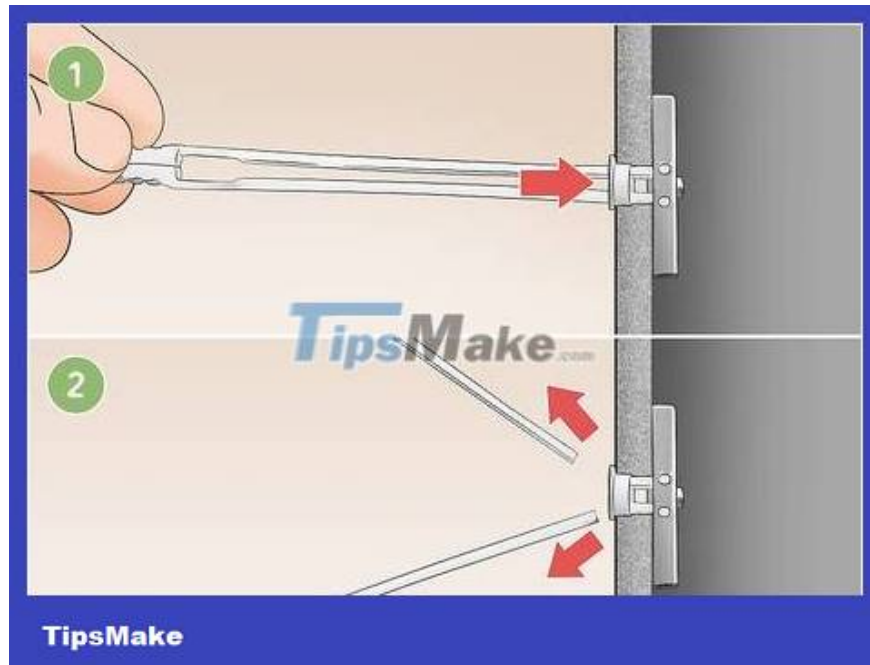
Drill the marked holes in the plaster wall to a length of about 6 mm. Firmly insert the 6 mm drill bit into the drill head. Aim the drill into one of the marked holes so that the drill bit is horizontal. Proceed to drill all the points you have marked.



Attach a 6mm butterfly switch to each hole. It's called a butterfly switch because each side of this special bolt has a hook with a hinge like a butterfly wing. The middle of the switch is hollow so you can screw it in. Clamp the two butterfly wings at the end of the switch and press them into the holes you drilled. Once the butterfly is in the hole, the butterfly's wings will expand and cling to the back of the drywall.

You can buy butterfly switches at hardware stores.

Butterfly cockroaches are usually not included in TV mounting kits.



With removable butterfly switches that can be reused, you need to push the head of the switch into the hole for the butterfly wings to expand. This is a small round piece of plastic located at the top of the butterfly switch. Push this part into the hole so that the top of the switch is level with the wall. After the head of the switch is fixed in the wall, you can break off the plastic pull rod on the outside of the wall.

If you have difficulty breaking the plastic sticks of the millet lizard, you can use scissors or a saw to cut them flat.



Apply the mounting bracket to the butterfly switch and tighten the screw with a screwdriver. Place the mounting bracket on the wall so that the holes are aligned with the butterfly switch. Screw the screws that come with the mounting bracket into the mounting holes clockwise to tighten the screws. After the screws are

tightened by hand, continue tightening with a screwdriver to secure the mount to the wall.

Warning: Do not use a drill to tighten screws because you may over-tighten and damage the drywall.



Hang the TV frame on the shelf. The TV's rear frame will have hooks or clips that fit into the mounting bracket. Carefully lift up both sides of the TV and align the hooks with the mounting bracket. Slowly release your hand from the TV to make sure the device does not fall out of the mount, then tighten the screws or bolts securing the TV frame (if any).

Ask someone to help you lift the TV or look behind you to attach the mounting bracket to the correct position on the shelf.

You finished reading the article "**How to Hang a Flat Screen TV on a Drywall**" edited by the [TipsMake](#) team. We hope this article has provided you with many useful tech tips and tricks. You can search for similar articles on tips and guides. Thank you for reading and for following us regularly.