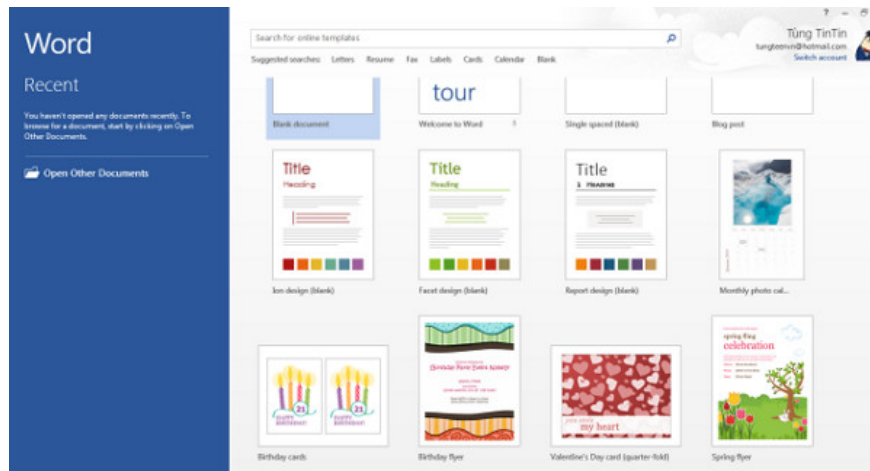


How to go straight to the editing screen in Office 2013

In the Office 2013 utility, when users open an editor like Word, Excel, and PowerPoint, they encounter the default greeting screen. If you feel that this screen is not needed, users can perform a uninstall according to the following procedure.

Trick to go straight to the editing screen in Office 2013, skip the default "greeting" screen.

In the Office 2013 utility, when users open an editor like Word, Excel, and PowerPoint, they encounter the default greeting screen. If you feel that this screen is not needed, users can perform a uninstall according to the following procedure:

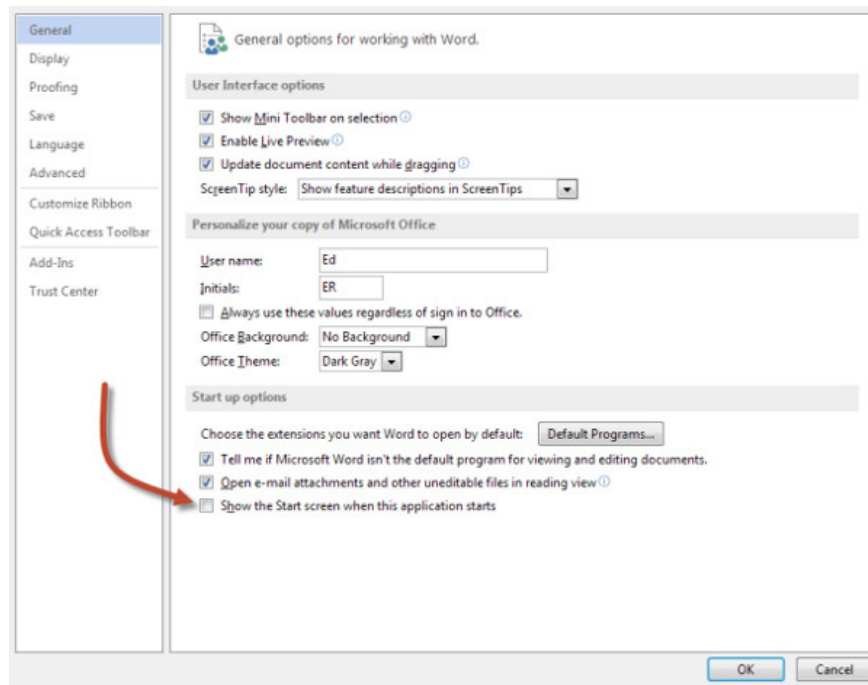


The welcome screen can be uncomfortable for users

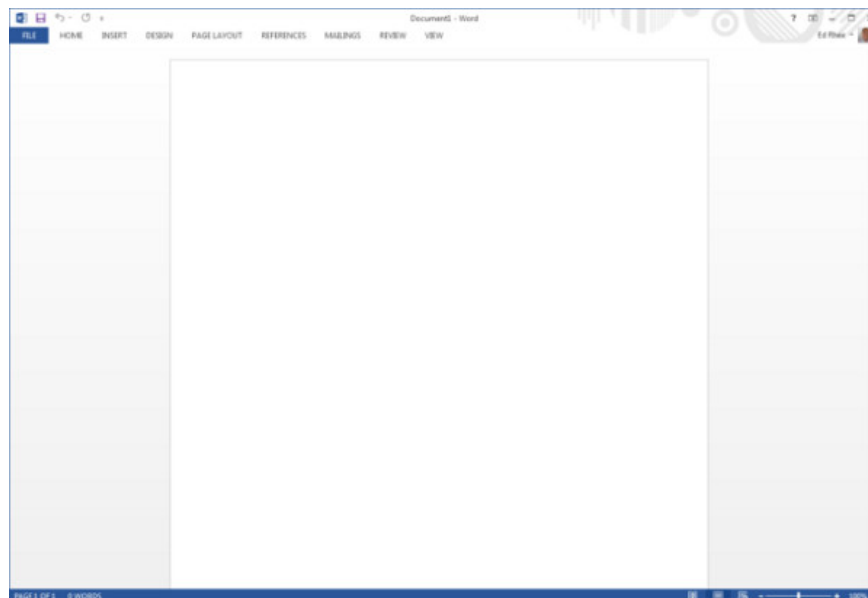
Instructions are made on the Word utility:

Step 1: In the main working interface of Word, click the **File** menu > **Options** (you can press **ALT + F** key combination).

Step 2 : In the window that appears, click on the **General** tab and go to the **Startup options section**. Then mark the option **Show the Start screen when this application starts**.



Step 3 : Turn off Word and reactivate, users will be able to go straight to the text editor without having to go through the welcome screen.



Note: Utilities like Excel and PowerPoint can be implemented in the same way.

You finished reading the article "**How to go straight to the editing screen in Office 2013**" edited by the [TipsMake](#) team. We hope this article has provided you with many useful tech tips and tricks. You can search for similar articles on tips and guides. Thank you for reading and for following us regularly.