

How to Get MAC Address Using Remote IP Address

Do you need to determine the Mac address of a certain computer on the network? Whether you are using Windows, macOS or Linux, you can easily find the MAC address of any server on your local network with a few simple commands. Today's TipsMake will show you how to use commands like `arp` and `getmac` to determine the MAC address of a specific IP or hostname, in addition to how to use the `nmap` command to see all MAC addresses in the network.

Use the `arp` command



Open a Command Prompt or Terminal window. You can use the command `arp` on any operating system to determine the MAC address of another computer on the network.

On Windows, enter `cmd` in the Windows Search bar, right-click **Command prompt** , and select **Run as administrator** .

If you use macOS, you need to type `Terminal` in the Spotlight search bar and then double-click **Terminal** .

On Linux, press **Ctrl + Alt + T** or open a Terminal window from the window manager.

```
root@wikiHow: ~  
# ping 192.168.109.1  
PING 192.168.109.1 (192.168.109.1) 56(84) bytes of data.  
64 bytes from 192.168.109.1: icmp_seq=1 ttl=128 time=0.764 ms  
64 bytes from 192.168.109.1: icmp_seq=2 ttl=128 time=0.368 ms  
64 bytes from 192.168.109.1: icmp_seq=3 ttl=128 time=0.334 ms  
64 bytes from 192.168.109.1: icmp_seq=4 ttl=128 time=0.353 ms  
64 bytes from 192.168.109.1: icmp_seq=5 ttl=128 time=0.802 ms  
64 bytes from 192.168.109.1: icmp_seq=6 ttl=128 time=0.344 ms  
64 bytes from 192.168.109.1: icmp_seq=7 ttl=128 time=0.379 ms  
64 bytes from 192.168.109.1: icmp_seq=8 ttl=128 time=0.293 ms  
64 bytes from 192.168.109.1: icmp_seq=9 ttl=128 time=0.262 ms  
^C  
--- 192.168.109.1 ping statistics ---  
9 packets transmitted, 9 received, 0% packet loss, time 8146ms  
rtt min/avg/max/mdev = 0.262/0.433/0.802/0.190 ms  
(root@wikiHow)~#
```

TipsMake

Execute the command to contact the IP address. ping *ipaddress* You need to contact the remote computer so that its MAC address is added to the cache—ping is an easy way to do this.

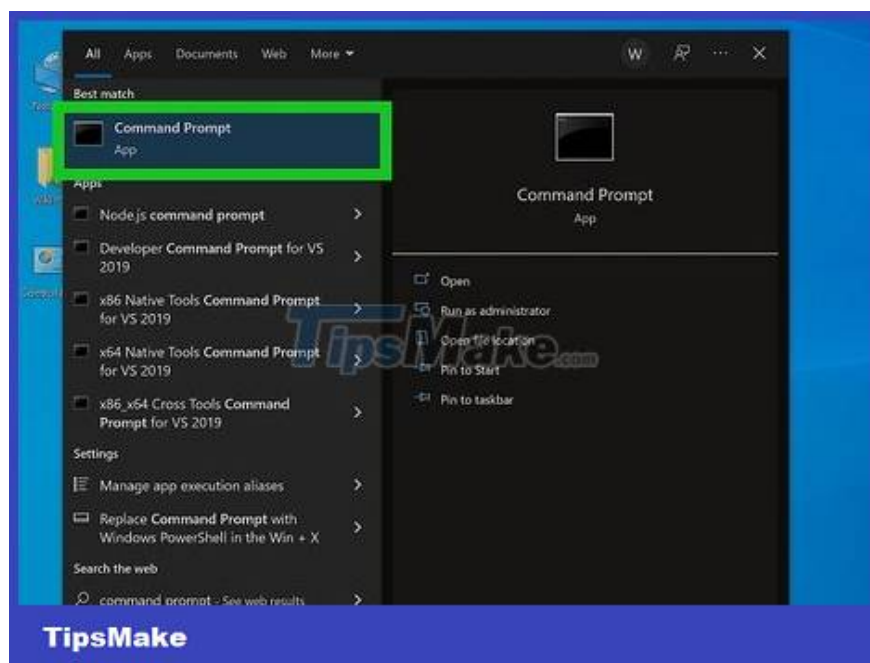
If you know the computer's hostname but don't have an IP address, simply ping the hostname—the IP address will be returned for you to use in the next step.

```
root@wikiHow: ~  
(root@wikiHow)~# ping 192.168.109.1  
PING 192.168.109.1 (192.168.109.1) 56(84) bytes of data.  
64 bytes from 192.168.109.1: icmp_seq=1 ttl=128 time=0.764 ms  
64 bytes from 192.168.109.1: icmp_seq=2 ttl=128 time=0.368 ms  
64 bytes from 192.168.109.1: icmp_seq=3 ttl=128 time=0.334 ms  
64 bytes from 192.168.109.1: icmp_seq=4 ttl=128 time=0.353 ms  
64 bytes from 192.168.109.1: icmp_seq=5 ttl=128 time=0.802 ms  
64 bytes from 192.168.109.1: icmp_seq=6 ttl=128 time=0.344 ms  
64 bytes from 192.168.109.1: icmp_seq=7 ttl=128 time=0.379 ms  
64 bytes from 192.168.109.1: icmp_seq=8 ttl=128 time=0.293 ms  
64 bytes from 192.168.109.1: icmp_seq=9 ttl=128 time=0.262 ms  
^C  
--- 192.168.109.1 ping statistics ---  
9 packets transmitted, 9 received, 0% packet loss, time 8146ms  
rtt min/avg/max/mdev = 0.262/0.433/0.802/0.190 ms  
(root@wikiHow)~# arp -a 192.168.109.1  
arp: in 2 entries no match found.  
(root@wikiHow)~# arp -a 192.168.109.1  
(192.168.109.1) at 00:50:56:c0:00:08 [ether] on eth0  
(root@wikiHow)~#
```

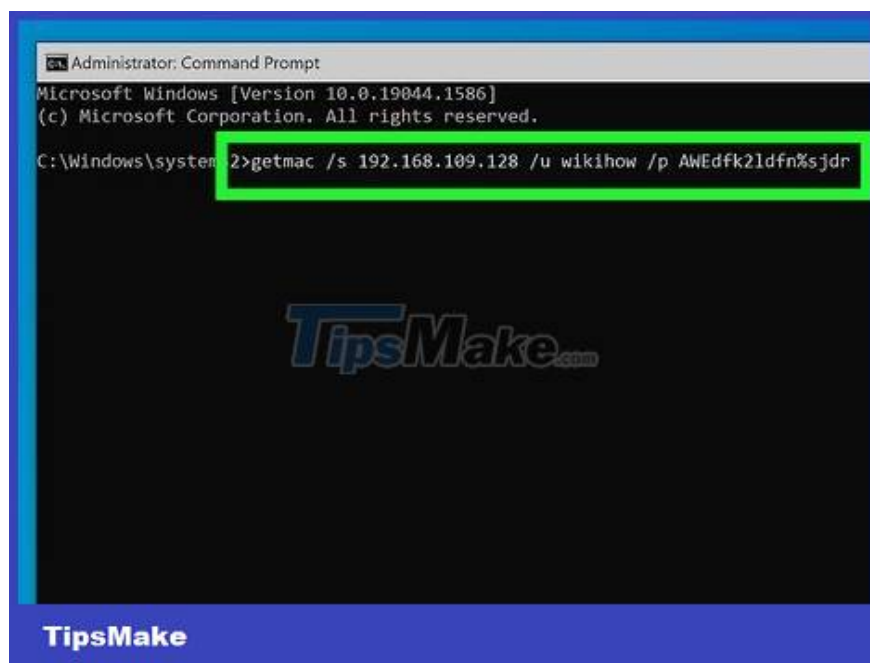
TipsMake

Execute command to get MAC address. arp -a *ipaddress* The MAC address will appear under the "Physical Address" heading in the arp results on Windows and "HWaddress" on macOS and Linux.

Use getmac command (Windows)



Open command prompt. If you can log in to the remote computer with administrator access (and that computer is also running Windows), you can use the command `getmac` to see every MAC address on this device. Type `cmd` into the Windows Search search bar, right-click on **the Command prompt** and select **Run as administrator** .



Execute command `getmac`. The full command would be `getmac /s ipaddress /u username /p password` .

Replace *ipaddress* with the IP address or hostname of the remote computer.

Replace *username* and *password* with the remote computer's administrator username and password.

```
{"smallUrl":"https://www.wikihow.com/images_en/thumb/a/a9/Get-a-MAC-Address-from-an-IP-Remotely-Step-6.jpg/v4-460px-Get-a-MAC-Address-from-an-IP-Remotely-Step-6.jpg","bigUrl":"https://www.wikihow.com/images/thumb/a/a9/Get-a-MAC-Address-from-an-IP-Remotely-Step-6.jpg/v4-728px-Get-a-MAC-Address-from-an-IP-Remotely-Step-6.jpg","smallWidth":460,"smallHeight":345,"bigWidth":728,"bigHeight":546,"licensing":"
```

You finished reading the article "**How to Get MAC Address Using Remote IP Address**" edited by the [TipsMake](#) team. We hope this article has provided you with many useful tech tips and tricks. You can search for similar articles on tips and guides. Thank you for reading and for following us regularly.
