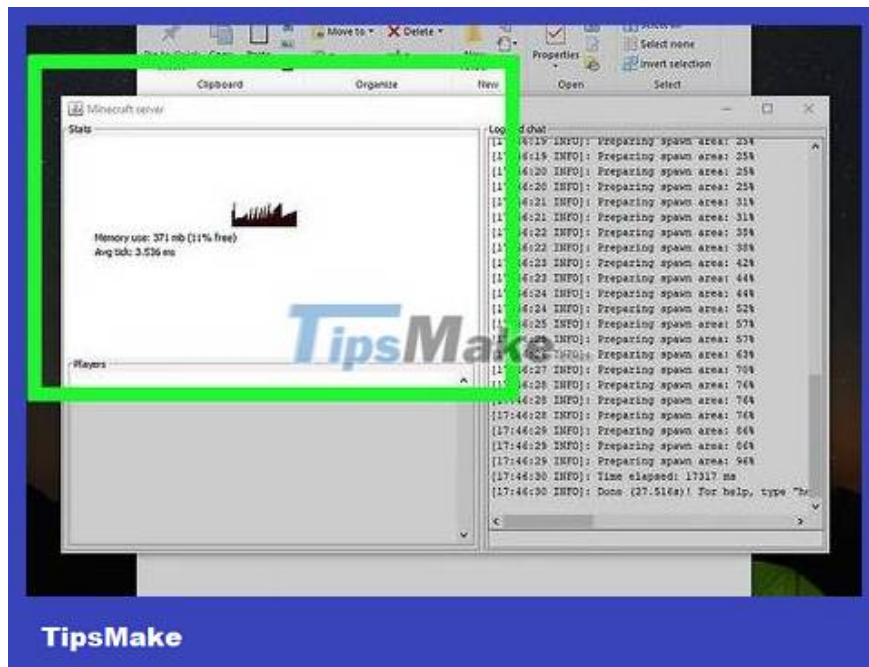


How to Forward Minecraft Ports

This article will show you how to forward ports for your Minecraft server. Forward port forwarding is necessary if you want to allow people who are not on your Wi-Fi network to join your server, as this will allow traffic from outside the network to enter your computer. Friend.

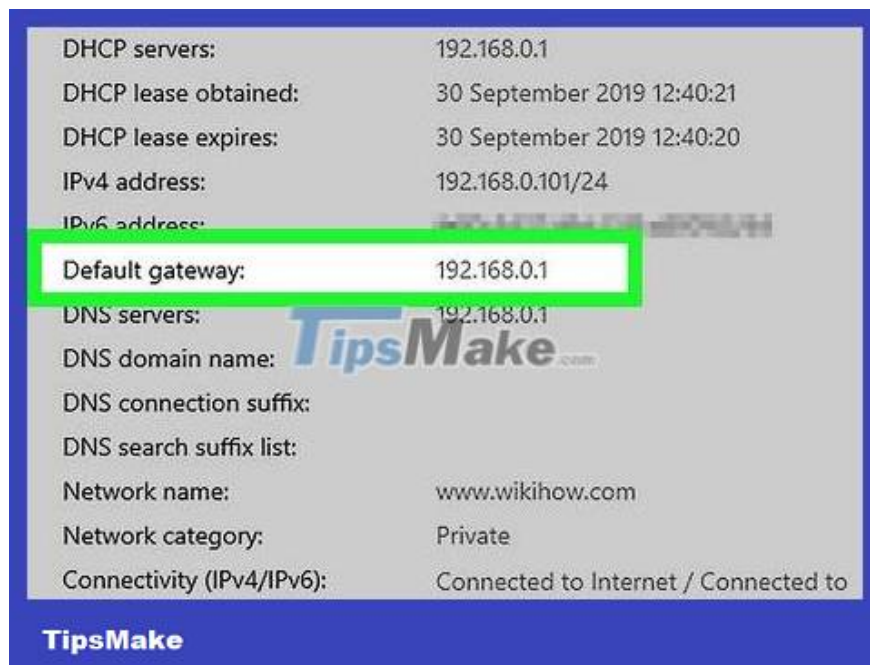
Prepare



Make sure the Minecraft server is set up. If you don't have a Minecraft server installed and configured on your computer, click one of the following links for how-to instructions specific to your operating system:

[Windows](#)

[Mac](#)



Search for the router's IP address. To access the router's page, you will need to know the router's address listed in your computer's settings:

On Windows — Open **Start** , click **Settings** , click **Network & Internet**, click **View your network properties** , scroll down to "Wi-Fi ", then write down the address next to "Default gateway".

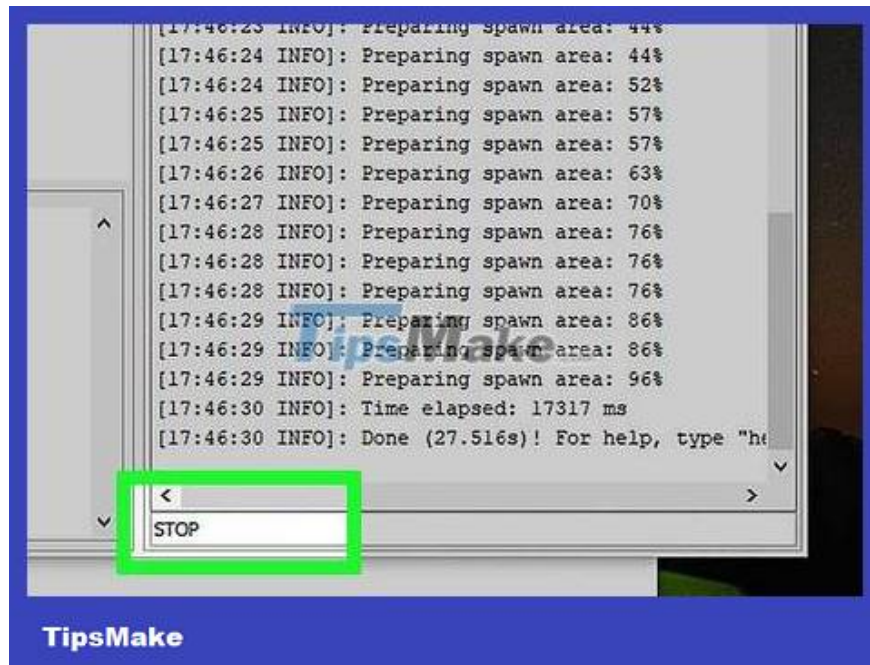
On Mac — Open the **Apple menu** , click **System Preferences** . , click **Network** , click your Wi-Fi connection on the left, click **Advanced** .), click the **TCP/IP** tab and note the address next to "Router".

Linux — Open Terminal (command line interface) and type "ip r". The last series of numbers is the router's IP address.



Find your computer's IP address. You'll usually see this address to the right of "IPv4" in the menu containing your router's IP address. This is the address that identifies your computer.

If you see a slash and another number at the end of an IP address (such as 192.168.1.12/32), your computer can be recognized by two addresses (such as 192.168.1.12 and 192.168.1.32).



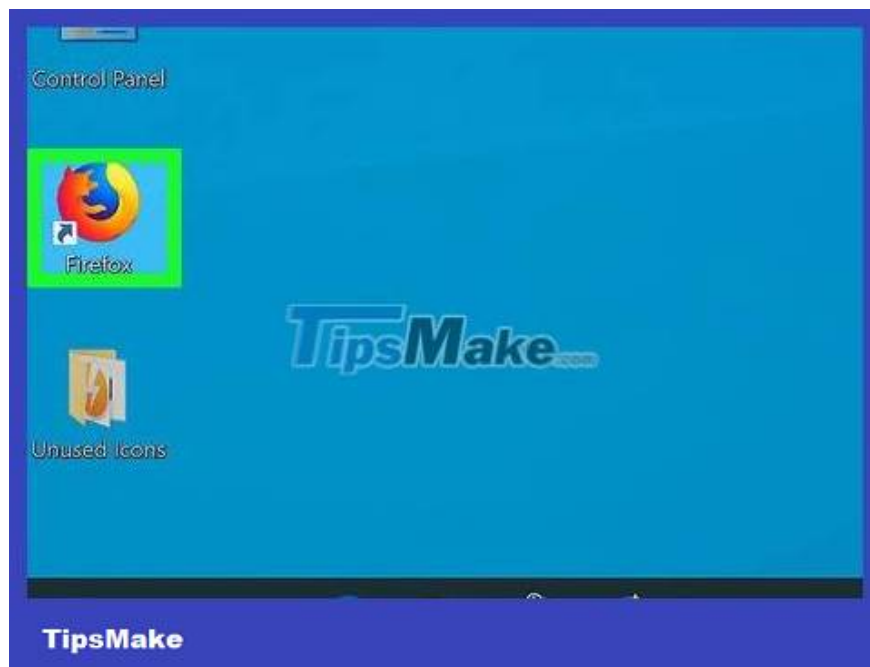
Close your Minecraft server if it is open. To properly forward your port, it must be unused. That means you will need to close the server.

Although this step is not absolutely necessary, it can help prevent errors from occurring.

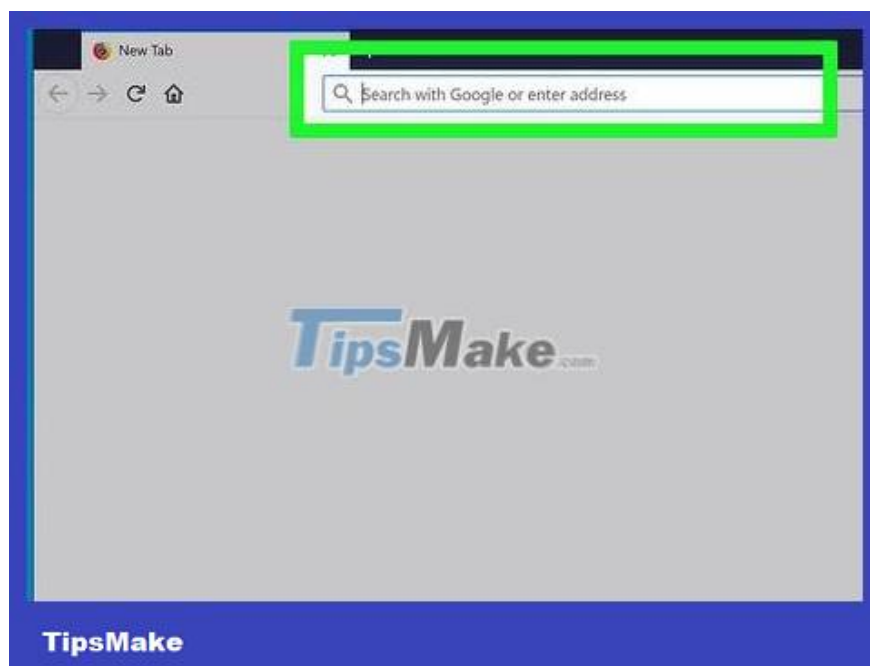


Close Minecraft. Once both Minecraft and your server have been closed, you can proceed with accessing your router's page.

Go to your router's page

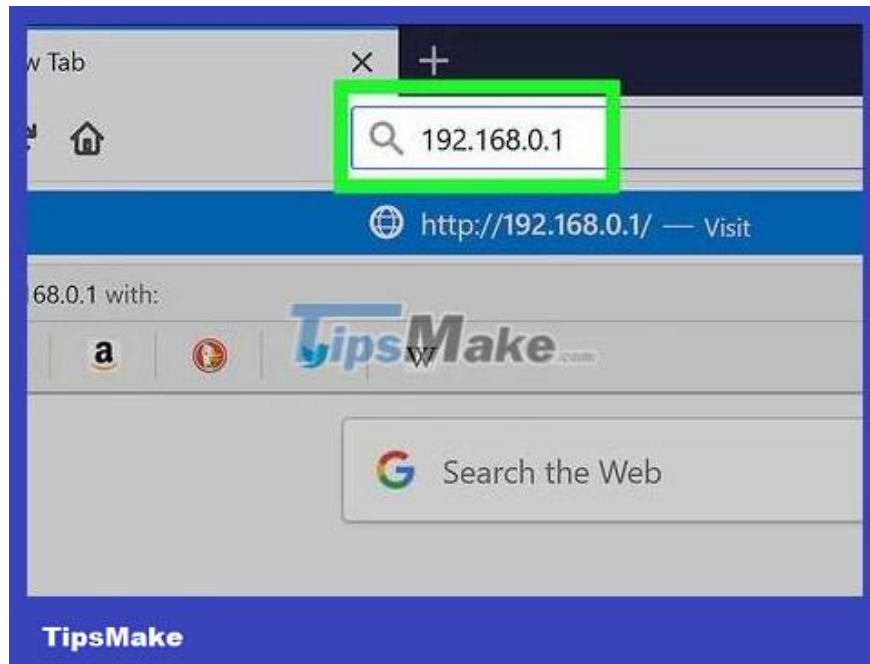


Open a web browser. Click or double-click your favorite web browser's application icon to do this.



Click the address bar. This bar is at the top of the web browser window.

If there is any text in the address bar, delete it before continuing.

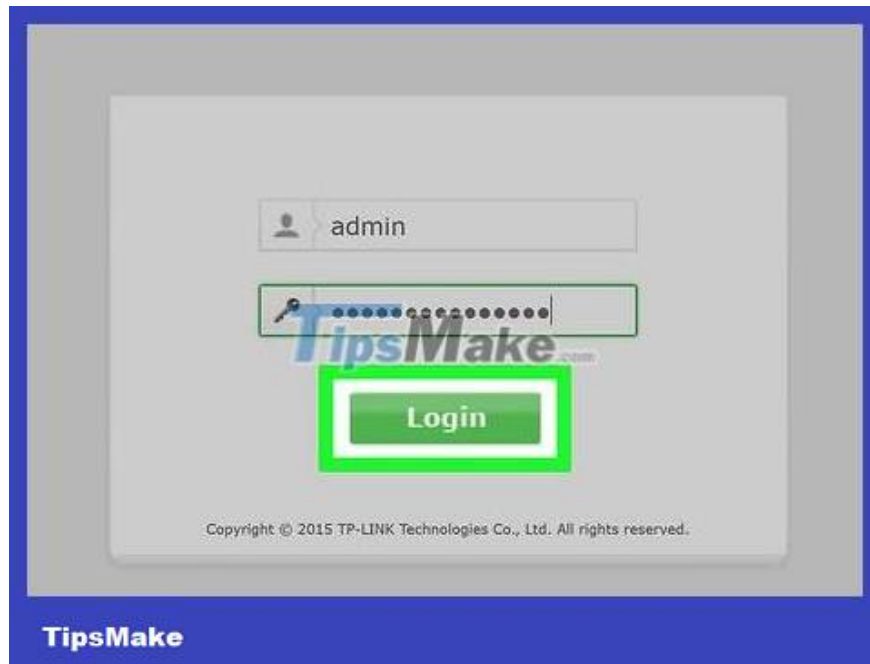


Enter your router's address. Type here the address you find next to "Default Gateway" (on Windows), "Router" (on Mac), or the last number "ip r" (on Linux).

For example: You can type something like 192.168.1.1 here.



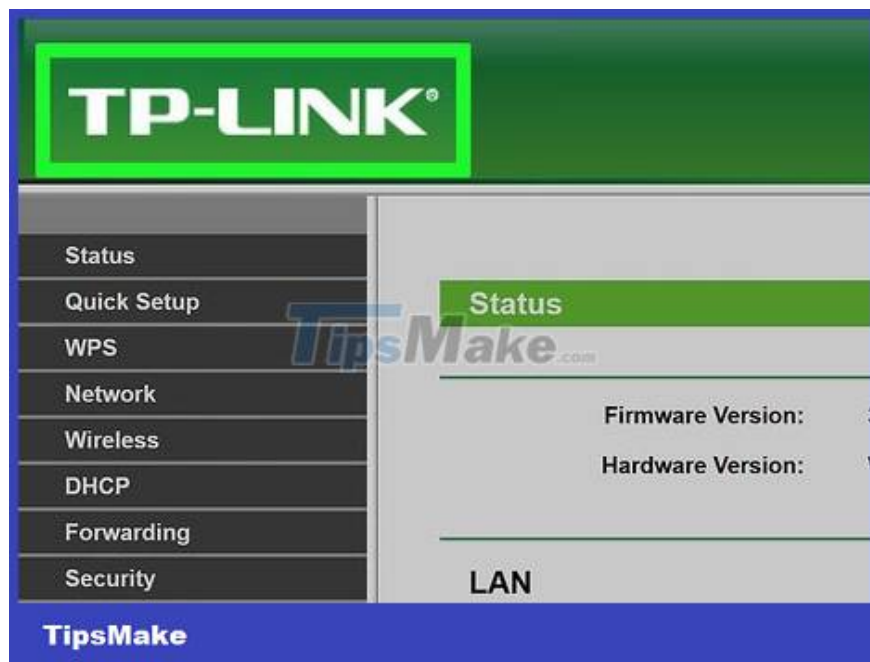
Press ? Enter. Once pressed, you will be redirected to your router's page if the router is online.



Log in to your router's page. Type in the username if prompted, then type in the password and tap ? Enter.

If you don't know your login information, don't worry—most routers just ask you to log in with default information (like "admin" as your username and "password" as your password). You can usually find this information on the back/side of the router or in the router manual.

If you can't find your router's label or manual, you can search for your router's model number online to find commonly used login information.



Wait for the router's page to finish loading. Especially the first time you access your router's page, it may take a few seconds for the page to load. After logging in, you can assign a static IP address to your computer.

You may need to go through some on-screen setup steps or follow instructions if this is your first time opening the router's page.

Assign a static IP address




Understand that each router page will look different. While it's possible to approximate the location of menu items in your router's page, what you see will vary widely from router to router.



Know why you need to assign a static IP address. Assigning a static (rather than dynamic) IP address to your computer will prevent the IP address from changing if the computer loses connection to the router. That means

you won't need to update your IP address in your server settings every time you turn your computer back on.



The screenshot shows a web interface for a DHCP Client List. The table is highlighted with a green border. The table has five columns: ID, Client Name, MAC Address, Assigned IP, and Lease Time. There are five rows of data. A 'Refresh' button is located below the table. The 'TipsMake.com' logo is visible in the background of the table area.

ID	Client Name	MAC Address	Assigned IP	Lease Time
1	wikHow-PC	08:00:20:08:00:08	192.168.0.101	Permanent
2	192.168.0.100	01:49:11
3	192.168.0.102	01:04:23
4	WikHow-Book	...	192.168.0.105	01:07:33
5	192.168.0.103	01:55:21

Search the list of devices connected to the router. The location of this list will vary, so try searching in the following places or menus:

Connected Devices

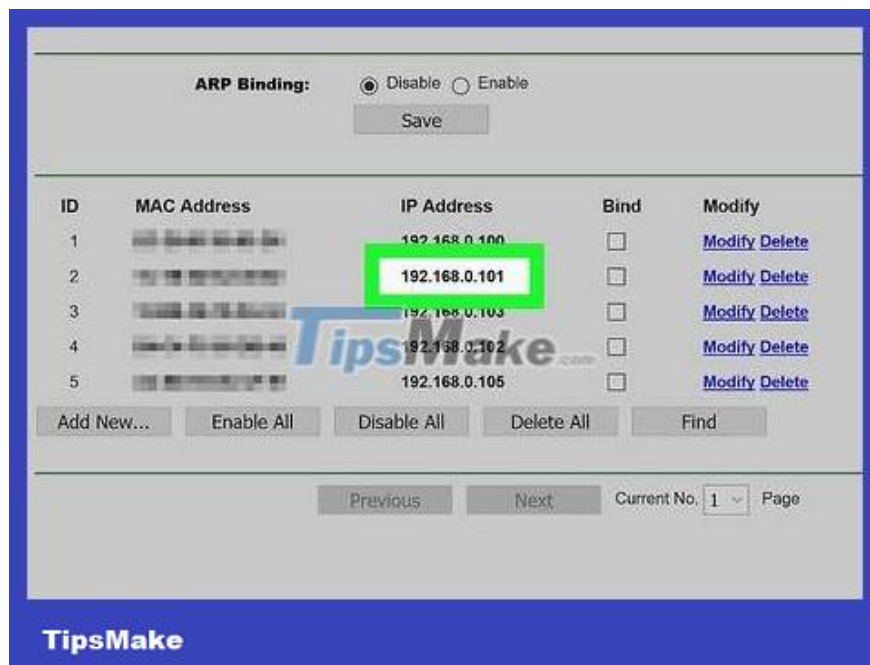
Settings

Advanced Settings

Network

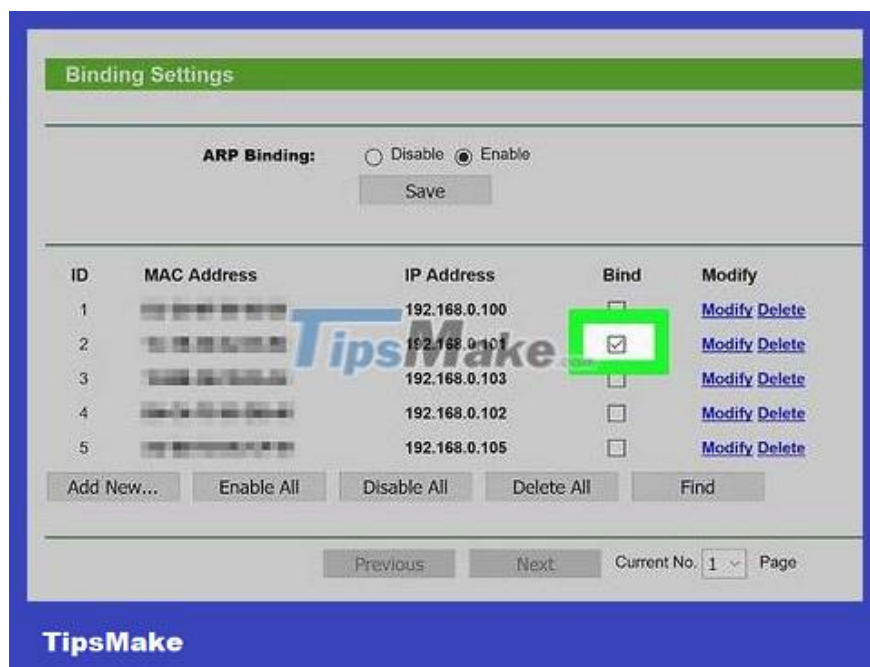
Devices

Parental Controls (Content restrictions)



Find your computer's IP address. Scroll through the list of connected devices until you find an IP address that matches your computer.

This is usually the "IPv4" address you find in the same menu as your router's address.



Lock IP address. Again, the procedure will vary depending on your router's site. You may need to click the lock icon next to your IP address, click the settings gear icon, then click Reserve **next** to the address or check the "Reserve" box near the address.

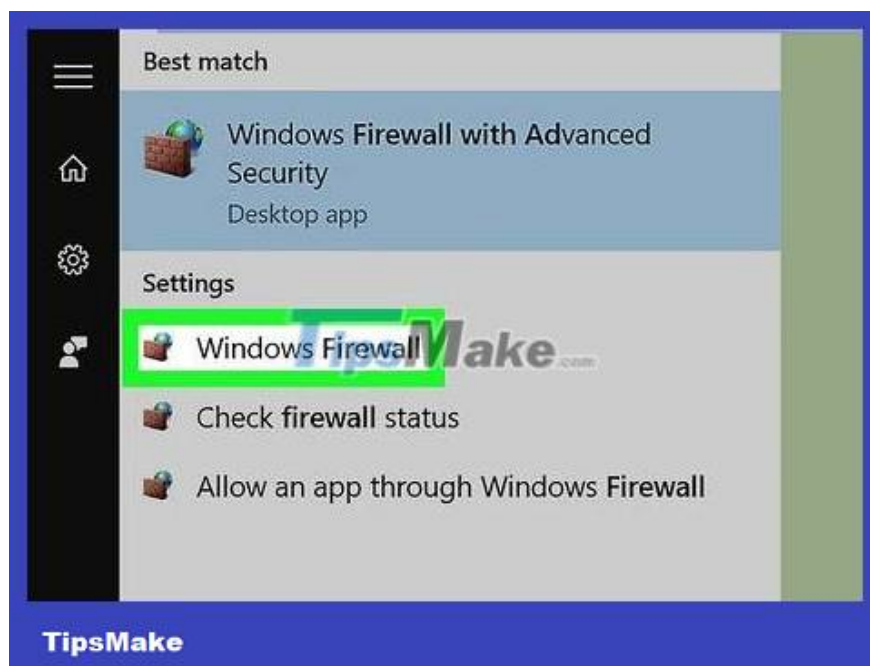
For specific instructions on how to assign a static IP address to your router model, read the online text or your router's user manual.



Save your changes. Click the **Save** or **Apply** button to do this. Now that your computer's IP address is locked, you can port forward Minecraft.

Your router will probably need to reboot before continuing. If so, the router will automatically reboot.

Minecraft port forwarding



Know which ports to forward. The default Minecraft port number is 25565. Unless you have changed this number in your computer's firewall settings, the default port number will be the one you use.



Find and open the "Port Forwarding" section of your router. On most routers, this is usually labeled "Port Forwarding" and is usually the main menu item or tab on the router's home page.

If you don't see "Port Forwarding" on the home page, search for Settings or Advanced Settings.

Again, you can read your router's specific text for instructions on how to use your router's port forwarding feature.



Type a name for your rule. In the "Name" or "Rule" text box, type a title (such as "Minecraft") that describes the port forwarding rule. If you want, you can add a description line.

Add or Modify a Virtual Server Entry

Internal Port: 25565 (XX, Enter a specific port number or

IP Address:

Protocol: All

Status: Enabled

Common Service Port: --Select One--

Save Back

TipsMake

Enter the Minecraft port number in the "Internal Port" text box. Type the number 25565 in this text field.

Add or Modify a Virtual Server Entry

Service Port: 25565 (XX-XX or XX)

Internal Port: 25565 (XX, Enter a specific port number or

IP Address:

Protocol: All

Status: Enabled

Common Service Port: --Select One--

Save Back

TipsMake

Add the port number to the "Outbound" text box. You will once again tap 25565 here. This is the step that causes your router to only forward port 25565 in this rule.

If you don't see this option, just look for the second "Port" text field on the right side of the list.

Add or Modify a Virtual Server Entry

Service Port: 25565 (XX-XX or XX)

Internal Port: 25565 (XX, Enter a specific port number or leave it blank)

IP Address: 192.168.0.101

Status: Enabled

Common Service Port: --Select One--

Save Back

TipsMake

Enter your computer's static IP address. In the "Address" text box, type the static IP address that you assigned to your computer.

Add or Modify a Virtual Server Entry

Service Port: 25565 (XX-XX or XX)

Internal Port: 25565 (XX, Enter a specific port number or leave it blank)

IP Address: 192.168.0.101

Protocol: All

Status: All

Common Service Port: UDP

Save Back

TipsMake

Select port type. Click the drop-down box next to "Protocol," then click **TCP** in the drop-down menu. You should also enable **UDP** in the same menu.

You may need to check a box (for example, click the "TCP" box).

Skip this step if the "Protocol" drop-down box already has **TCP** in it.

Add or Modify a Virtual Server Entry

Service Port: 25565 (XX-XX or XX)
Internal Port: 25565 (XX, Enter a specific port number or leave it blank)
IP Address: 192.168.0.101
Protocol: TCP
Status: Enabled
Common Service Port: --Select One--

Save Back

TipsMake

Save your changes. Click the **Save** or **Apply** button to do this. By this step, your port is usually forwarded, meaning you can invite your friends to use port 25565 on your computer's public IP address to access the Minecraft server.

Your router will probably need to reboot before continuing. If so, the router will automatically reboot. If not, wait a few minutes for the router to reboot.

You finished reading the article "**How to Forward Minecraft Ports**" edited by the [TipsMake](#) team. We hope this article has provided you with many useful tech tips and tricks. You can search for similar articles on tips and guides. Thank you for reading and for following us regularly.