

How to Format a Memory Card Using a Windows Computer

TipsMake today will teach you how to erase and reformat the memory card. Memory cards are commonly used as memory on cameras and tablets; To use a memory card on a specific operating system, you need to format it first.

On Windows



Check if your computer has a memory card slot. If you find a slim rectangular slot that fits a memory card on your computer, you can plug it in directly without the need for a USB memory stick or memory card reader.

If the computer has a memory card slot, skip to the next step.



Insert the memory card into the reader. Most likely the computer does not have a memory card slot, so you need to use a USB memory card reader.

USB memory card readers usually support both standard SD and microSD cards, but you may need a separate reader for larger and non-SD cards.

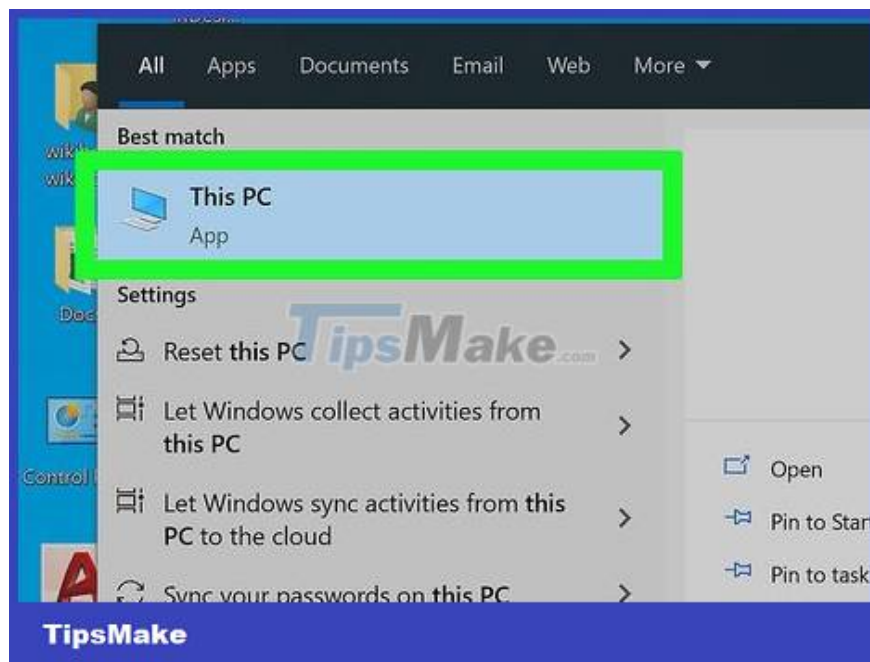


Insert the memory card into the reader. Plug the memory card reader into one of the USB ports on the computer. If the task window appears on your computer, you can close it.

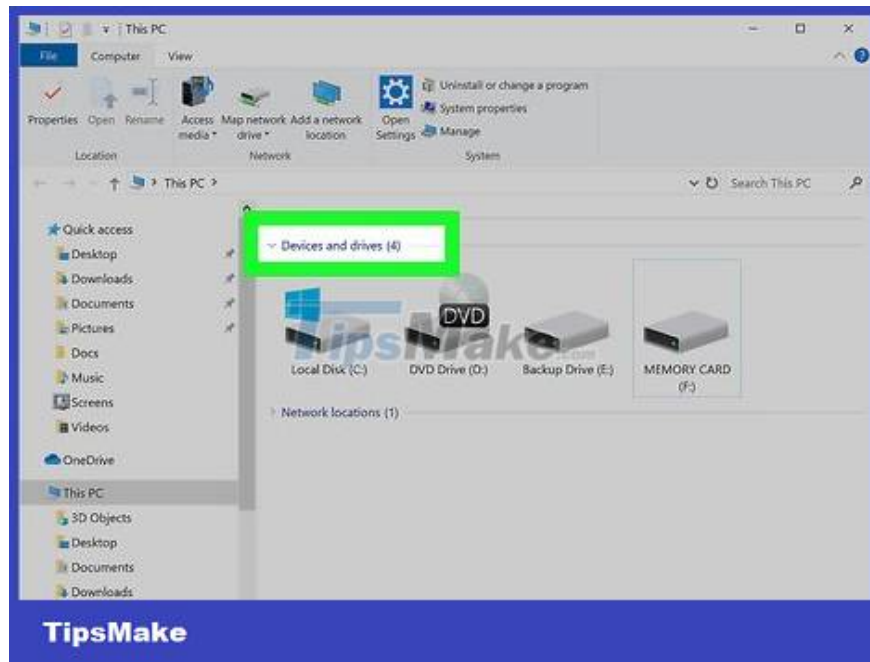
If your computer has a memory card slot, before you plug it in you need to make sure that the card label is facing up (the yellow connector is facing down) and that the edge is angled in when inserted into the computer.



Open Start . Click the Windows icon in the lower left corner of the screen.

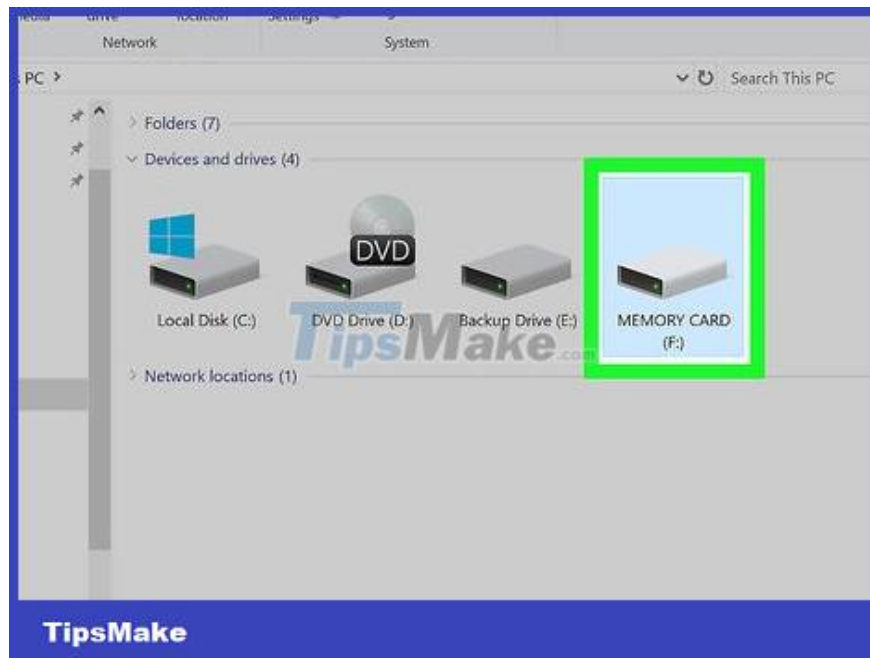


Open This PC. Type this pc, then click **This PC** at the top of the Start window.

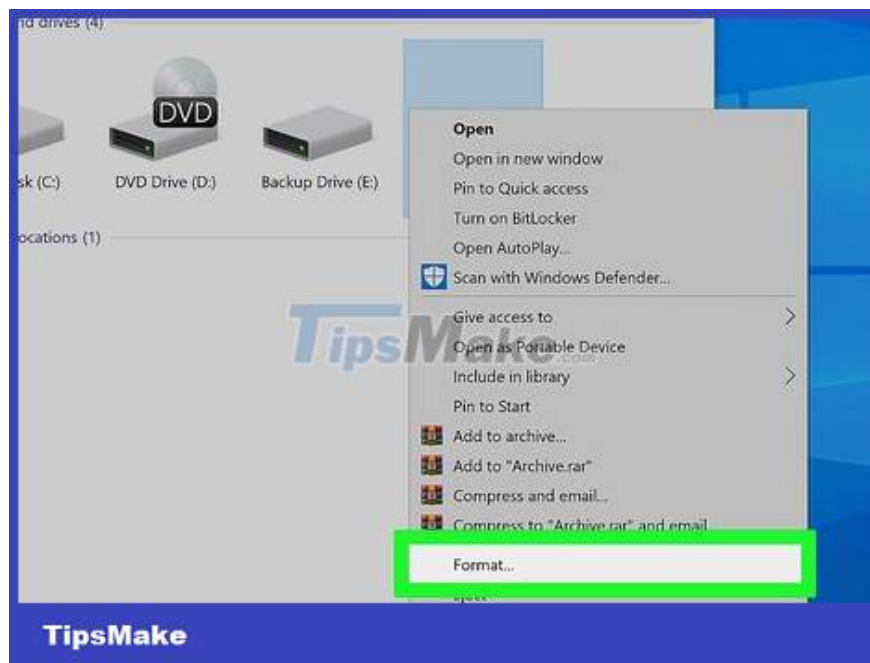


Find the memory card. The memory card will be listed under the "Devices and drives" heading in the middle of the This PC window.

If there's nothing below the "Devices and drives" heading, click it to expand it.



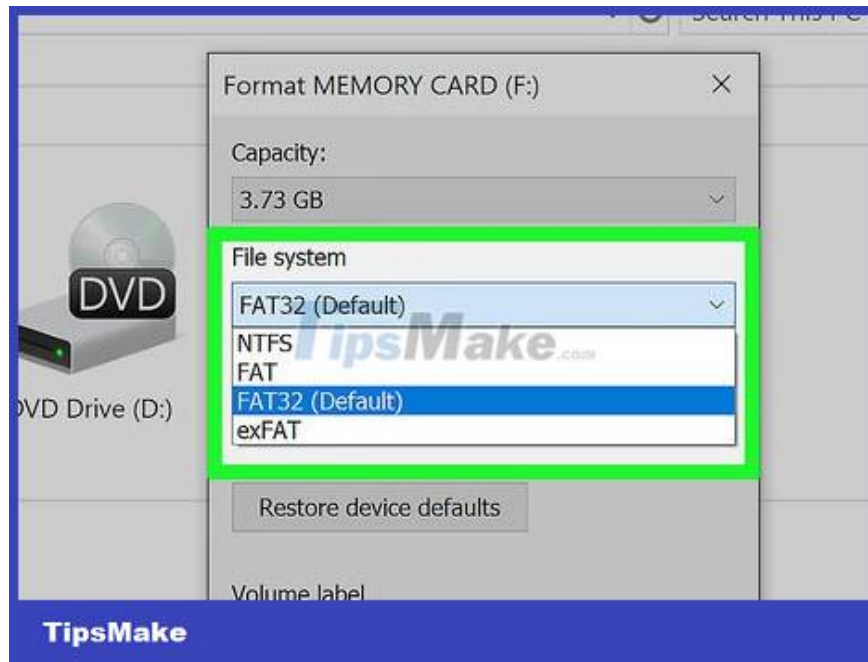
Right click on the memory card. A drop-down menu will pop up.



Click the **Format...** option in the middle of the drop-down menu. The Format menu will appear.

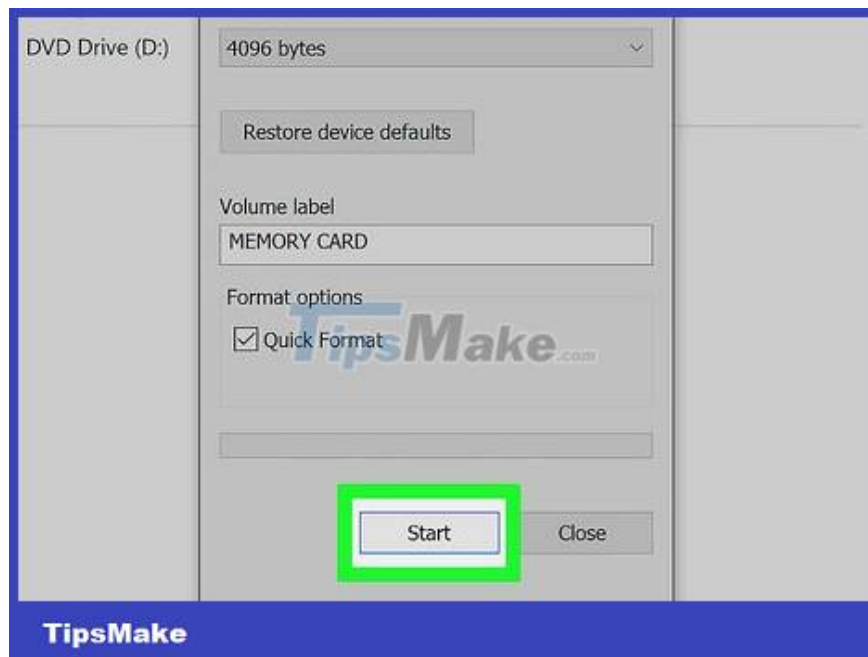


Click the **"File system"** drop-down box. This option is in the middle of the drop-down menu. Another menu will drop down.



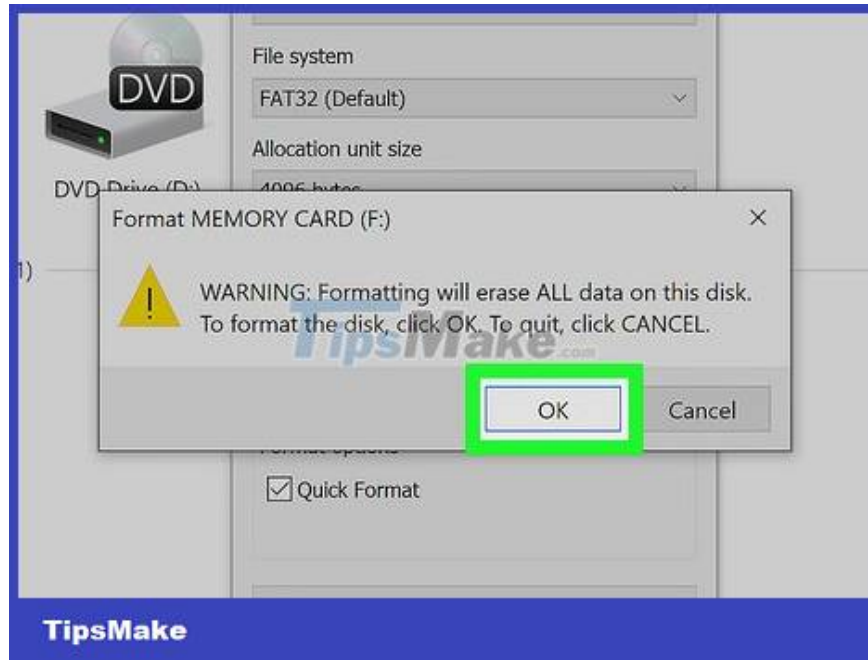
Select the file system. Click one of the following options (you may also see more options in the menu):

1. **FAT32** — Format memory cards for most platforms with a file size limit of 4 GB (for example, no files on the card are larger than 4 GB).
2. **NTFS** — Format memory cards for Windows only.
3. **exFAT** — Format memory cards for most platforms with no file size limitations.



Click the Start button at the bottom of the window.

If you want to do an intensive formatting process to erase *and* overwrite the entire memory card, uncheck the "Quick Format" box and then click **Start** .



Click OK when prompted. Windows will begin to format the memory card.

Formatting the memory card can take from a few seconds to several hours depending on the size of the memory card, the speed of your computer, and whether you use the "Quick Format" option.

On Mac



Check if your computer has a memory card slot. If you find a thin rectangular slot that fits a memory card on your computer, you can plug it in directly without a memory card reader.

If the computer has a memory card slot, skip to the next step.



Insert the memory card into the reader. Most likely the computer does not have a memory card slot, so you need to use a USB memory card reader.

If your Mac doesn't have a USB 3.0 port, you'll need to purchase a USB 3.0 to USB-C adapter to connect the SD card reader to it.

USB memory card readers usually support both standard SD and microSD cards, but you may need a separate reader for larger and non-SD cards.



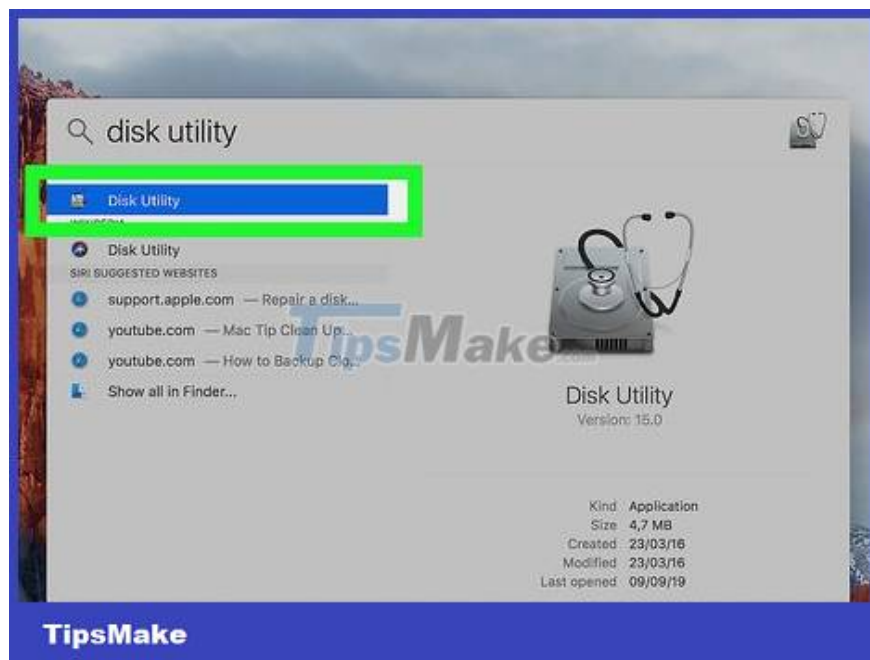
Insert the memory card into the reader. Plug the memory card reader into one of the USB ports on the computer. If the task window appears on your computer, you can close it.

If using a USB-C adapter, plug the device into one of the USB-C ports on your Mac first, then plug the memory card reader into the USB 3.0 port on the adapter.

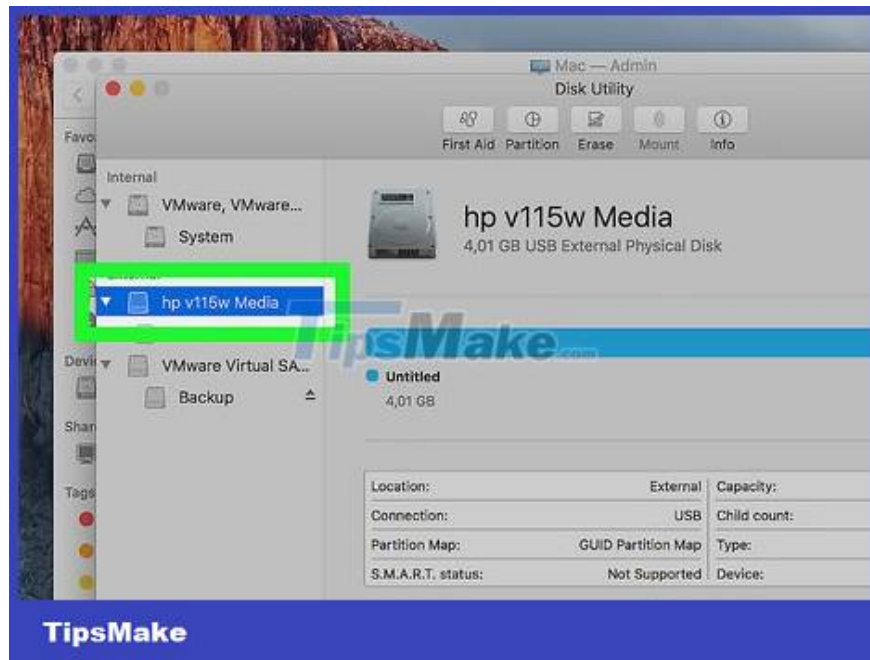
If your computer has a memory card slot, before you plug it in you need to make sure that the card label is facing up (the yellow connector is facing down) and that the edge is angled in when inserted into the computer.



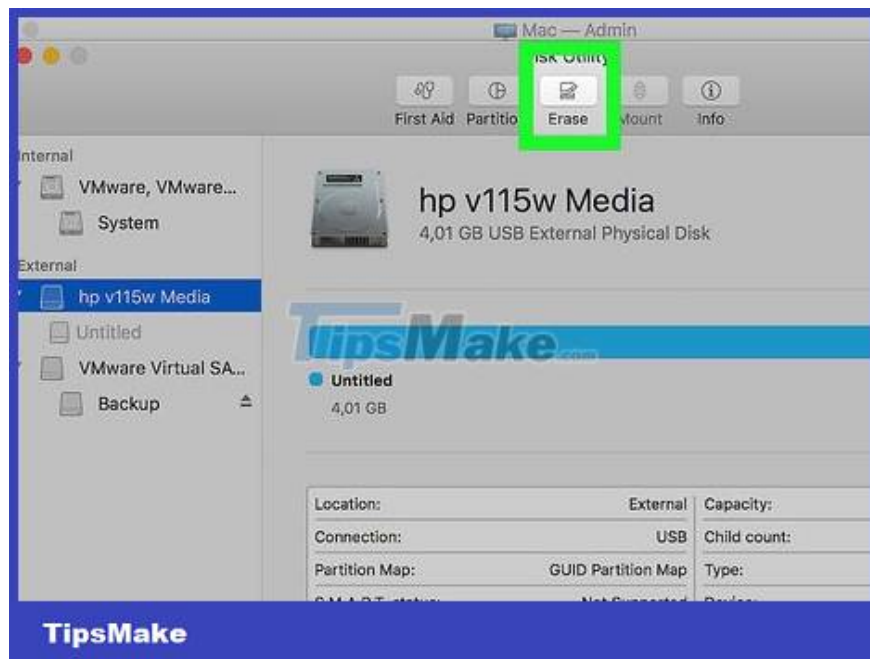
Open Spotlight . Click the magnifying glass Spotlight icon in the upper-right corner of the screen.



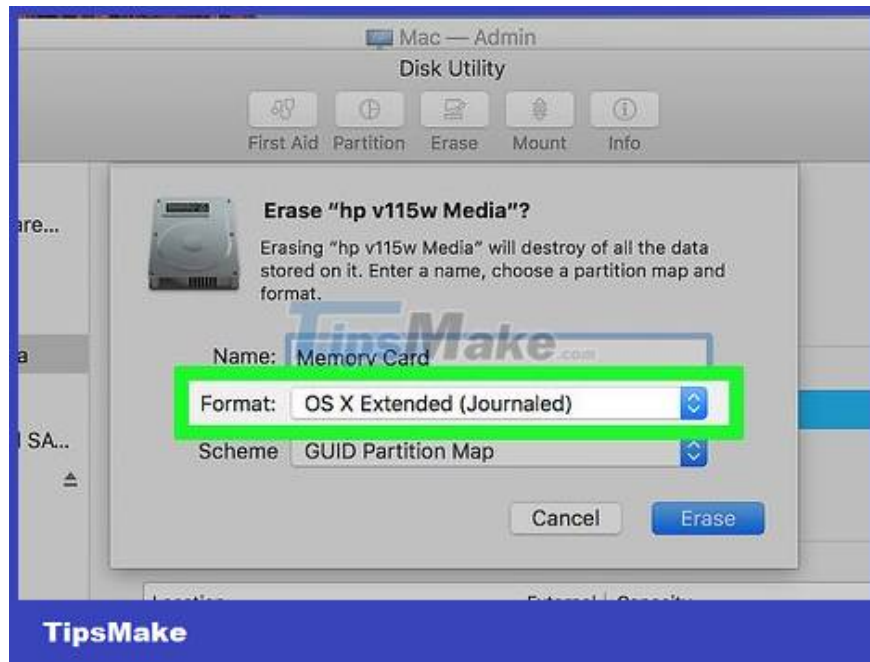
Open Disk Utility. Type `disk utility` in Spotlight, then double-click **Disk Utility** in the menu that appears.



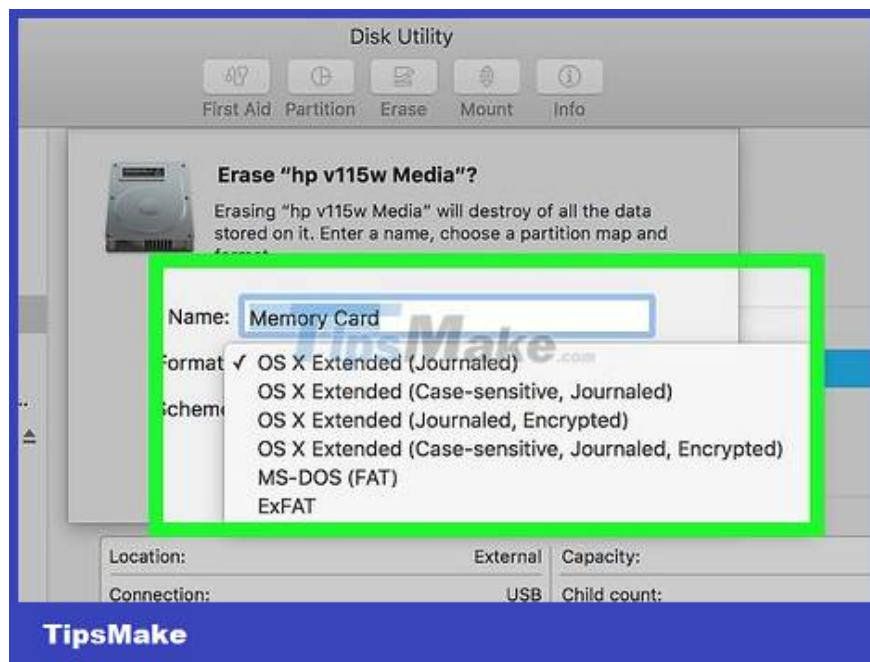
Select a memory card. Click the memory card's name in the upper left corner of the Disk Utility window to select it.



Click the Erase tab at the top of the Disk Utility window. A window will pop up.



Click the "Format" drop-down box in the middle of the window. A menu will drop down.



Select format. Click one of the formats in the drop-down:

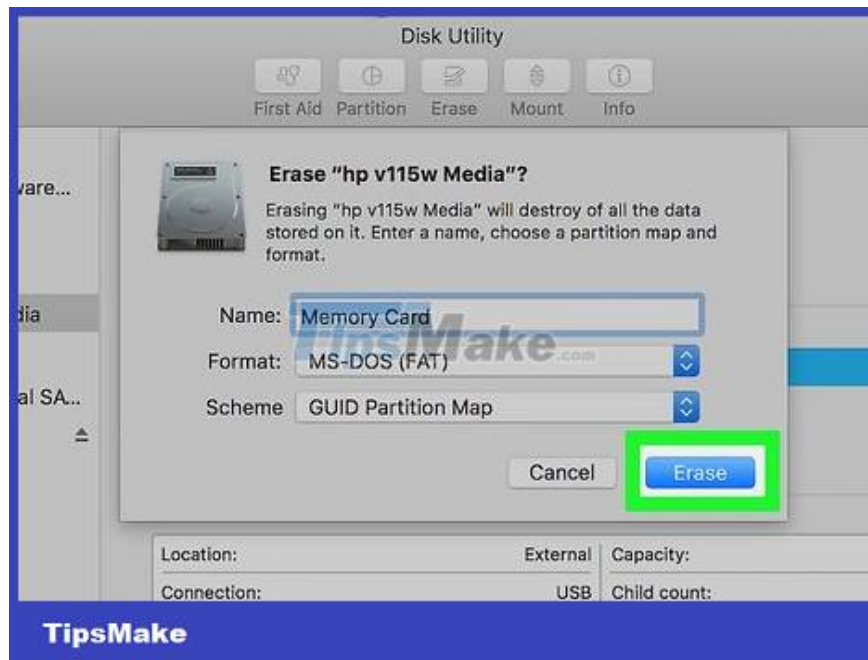
MacOS Extended (Journaled) — Format memory cards for macOS only.

You'll see more MacOS Extended options here (such as: **MacOS Extended (Journaled, Encrypted)**). These options are also available for Mac.

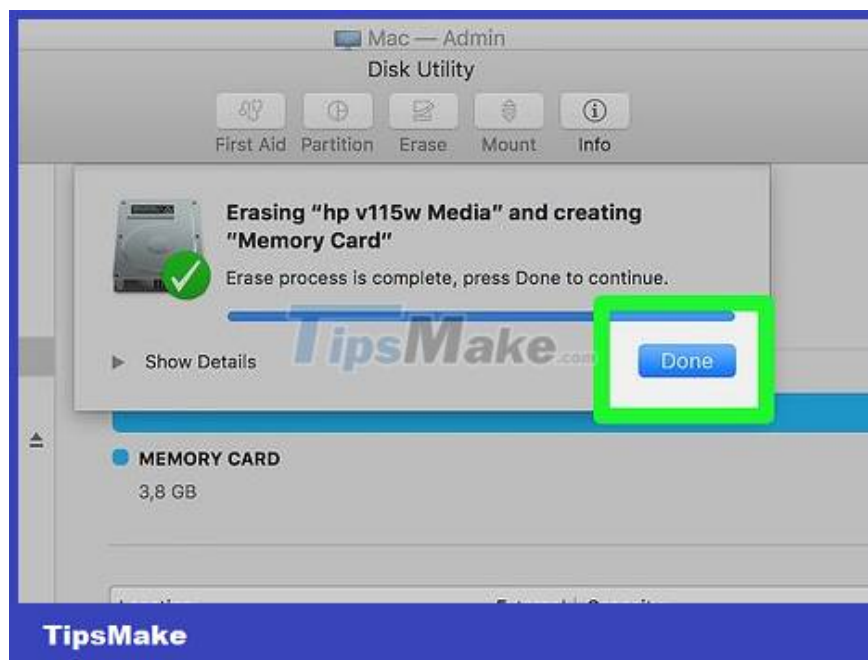
MS-DOS (FAT) — Format memory cards for the FAT standard with a 4 GB file size limit but can run on most platforms.

ExFAT — Format memory cards for most platforms.

You'll also see additional options in the "Format" menu.



Click the Erase button at the bottom of the window.



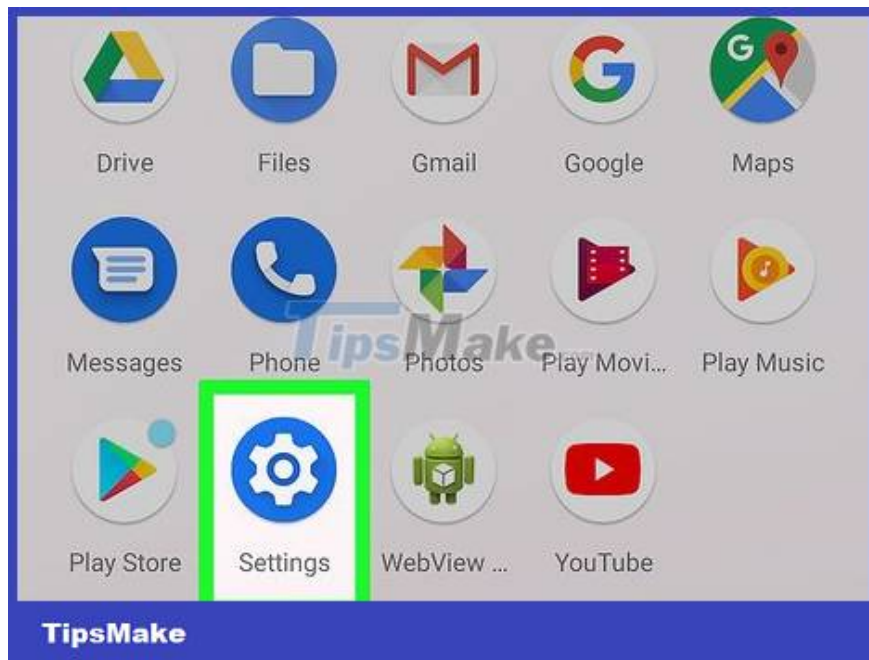
Click Erase when the option appears. Your Mac will begin to format the memory card.

The formatting process can take anywhere from a few seconds to several hours depending on the size of the memory card and the speed of your computer.

On Android



You need to make sure that the memory card is in the Android device. In order to format an Android device's memory card (usually microSD), it must be pre-installed on the device.

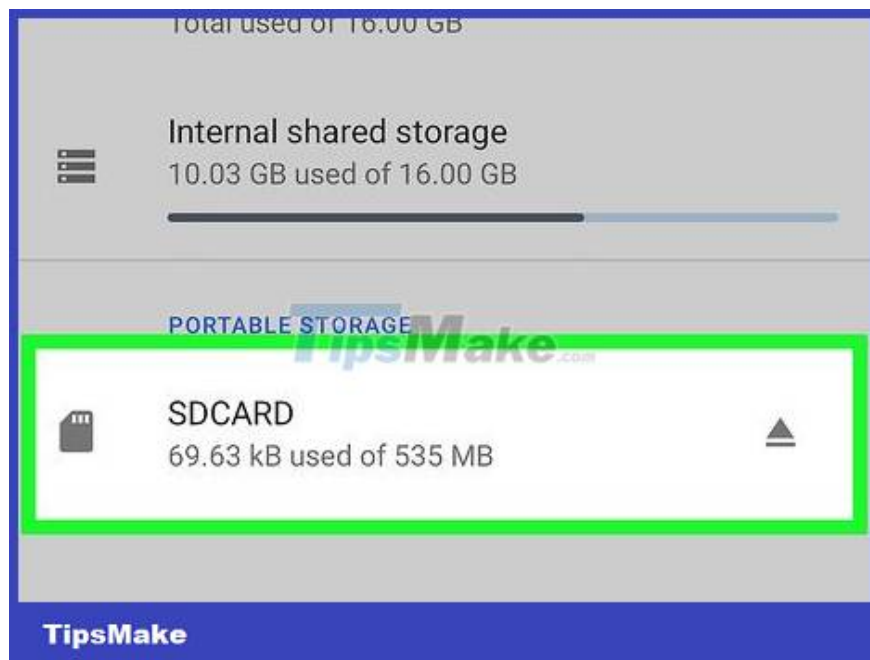


Open the Settings section on Android. Swipe down from the top of the screen with two fingers, then tap the **Settings** gear icon in the upper-right corner of the drop-down menu.



Tap the Storage option near the top of the Settings menu.

On Samsung Galaxy, you need to tap on **Device maintenance** .



Select a memory card. Click the memory card name to select.

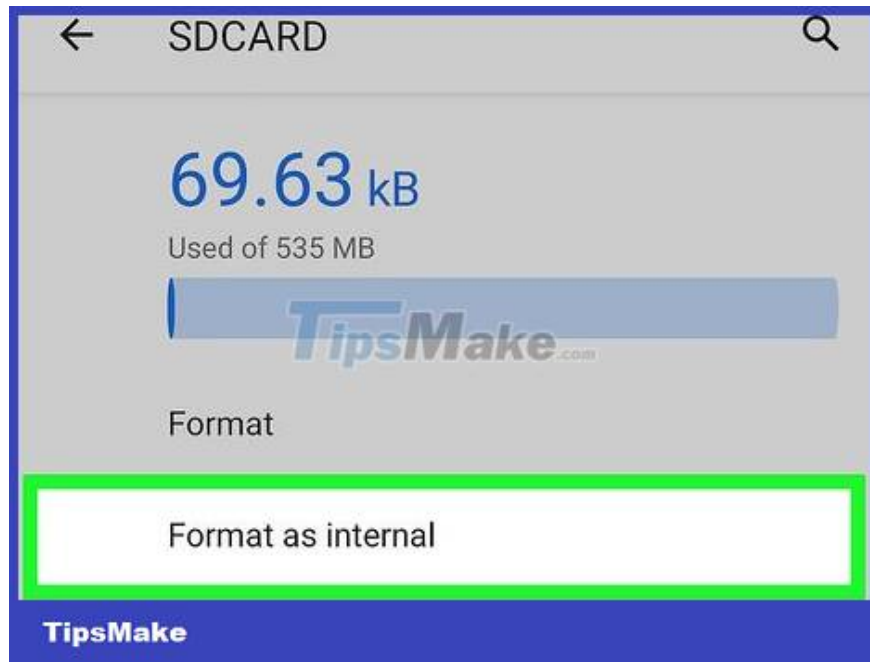
On Samsung Galaxy, you need to select **Storage** at the bottom of the page.



Tap the ? icon in the upper right corner of the screen. A menu will drop down.



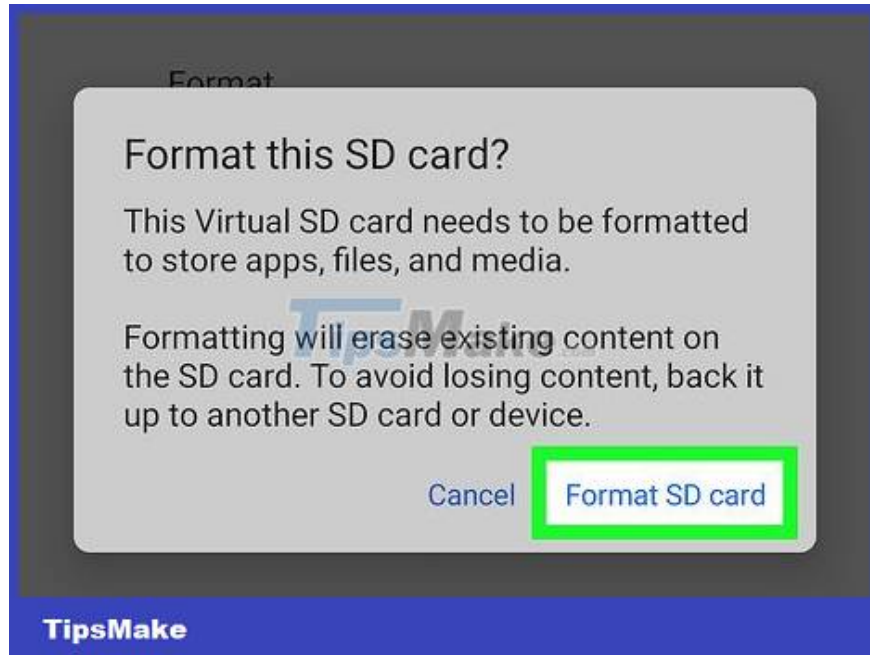
Click the Storage settings option located in the drop-down menu.



Click Format as internal . This option is near the top of the page.

If you just want to delete the data on the card, click **Format** here.

On Samsung Galaxy, you need to tap on the SD card name first. Then choose **Format** instead of **Format as internal** .



Tap ERASE & FORMAT (Erase & Format). This option is located in the lower right corner of the screen. The memory card will be erased and reformatted.

On Samsung Galaxy, you need to tap **FORMAT** here.

On camera



You need to make sure that the memory card is in the camera. To format a memory card from the camera settings, a memory card must be pre-installed in the device.



Turn on the camera. Press the machine's power button or rotate the function button.



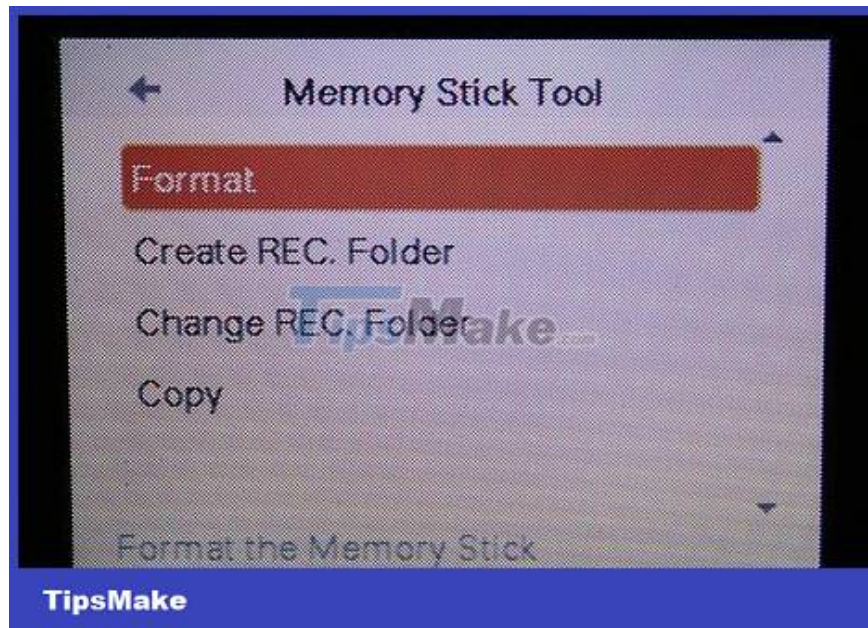
Switch to Playback Mode playback. This is the mode where you can scroll through the images on the SD card; In most cases, you need to press the button next to the "play" icon to scroll.

On some cameras, you may need to turn the dial to open the Playback Mode menu.

If you don't know how to open Playback Mode, you should consult your camera's manual or online documentation.

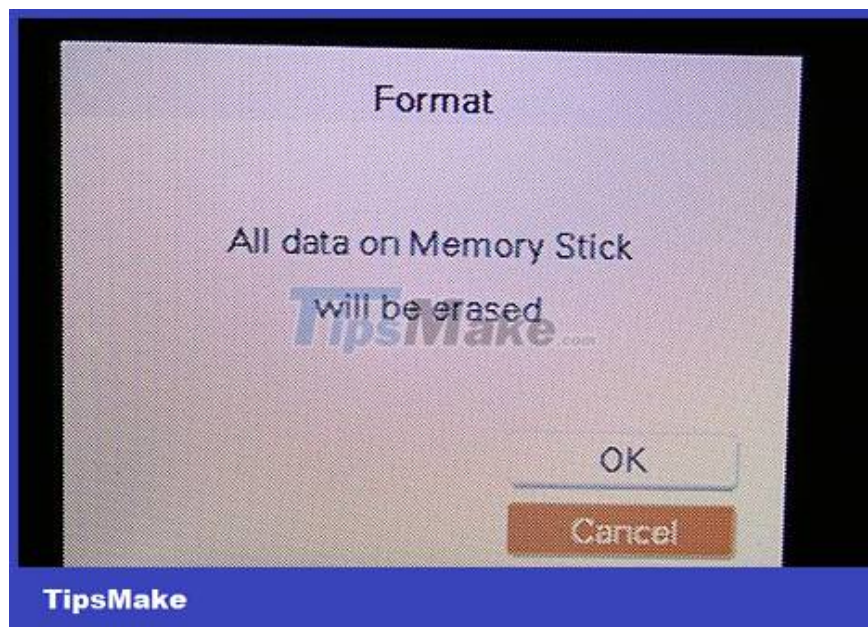


Press the "Menu" button. This button will vary from camera to camera, but is generally marked as "Menu", "Settings", "Preferences", or an abbreviation of any of them. A menu will pop up on the camera monitor.



Select Format . In most cases, you need to use the arrow button on the camera to select the **Format** line and then press the circle button between the navigation keys to select.

As a reminder, consult your camera's manual or online documentation for clear instructions on how to access the **Format** option .



Select OK or Yes when prompted. The camera will erase and format the SD memory card. Once done, the camera will notify you that you can continue using the memory card.

You finished reading the article "**How to Format a Memory Card Using a Windows Computer**" edited by the [TipsMake](#) team. We hope this article has provided you with many useful tech tips and tricks. You can search for similar articles on tips and guides. Thank you for reading and for following us regularly.
