

How to Force an App to Shut Down on Mac OS X

This wikiHow teaches you how to turn off an unresponsive application on your Mac OS X computer.

Use keyboard shortcuts

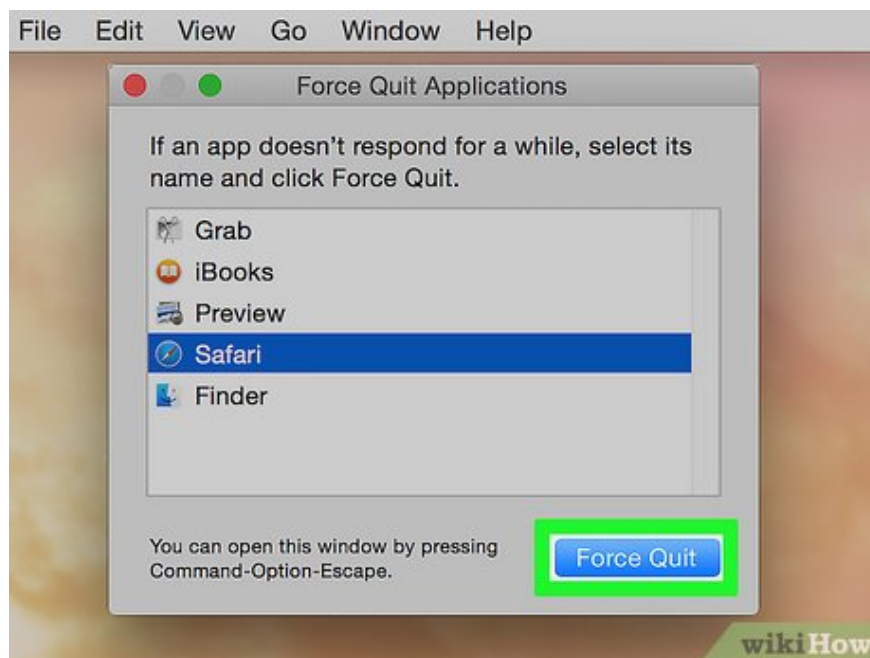


Press the key combination **⌘ + ⌥ + Esc**. The "Force Quit" dialog box opens.



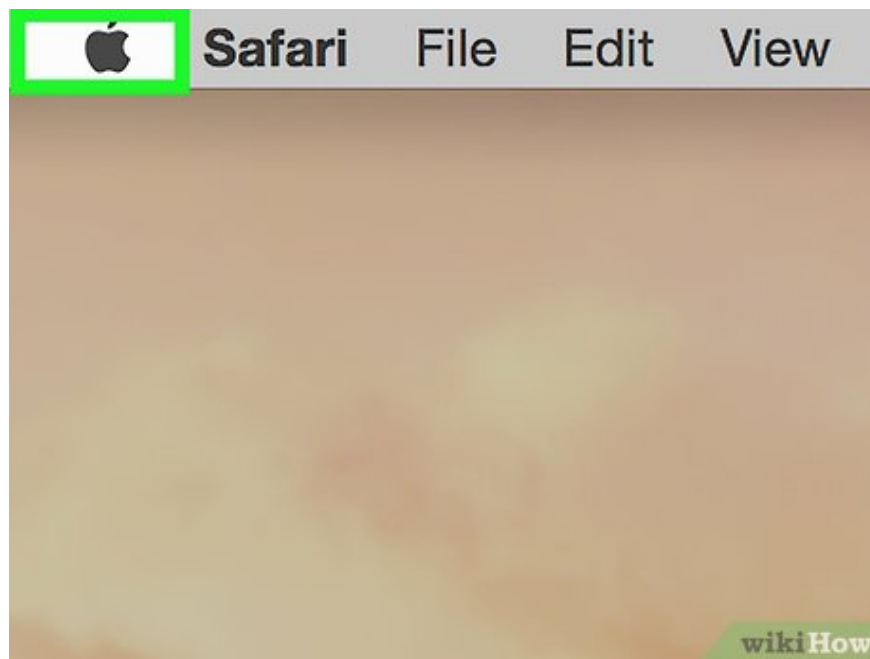
Click on the application you want to quit.

A "(Not Responding)" note will appear next to the frozen application.

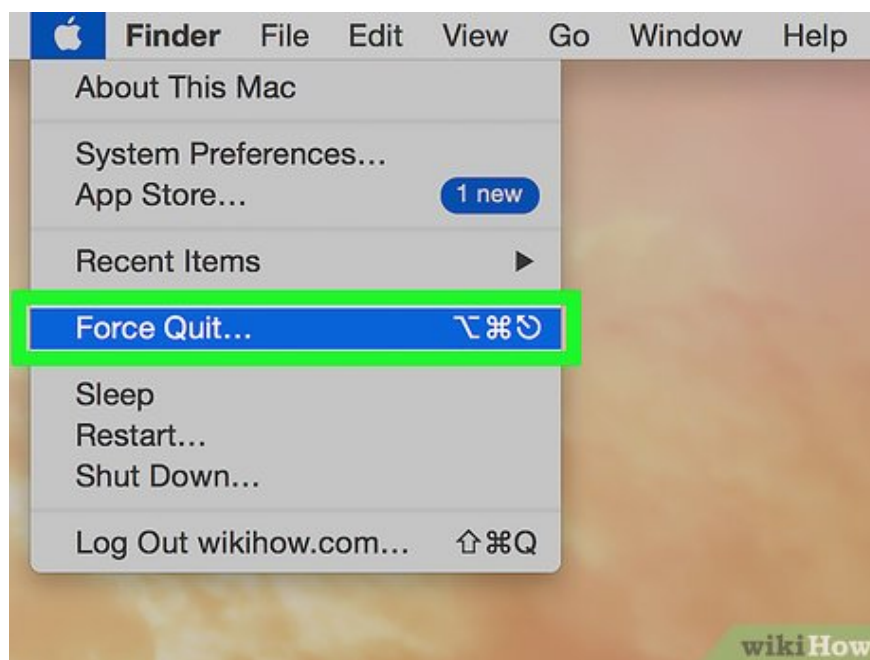


Click Force Quit . The application will be exited and restarted.

Use the Apple menu



Open the Apple menu with the black apple icon in the upper left corner of the screen.

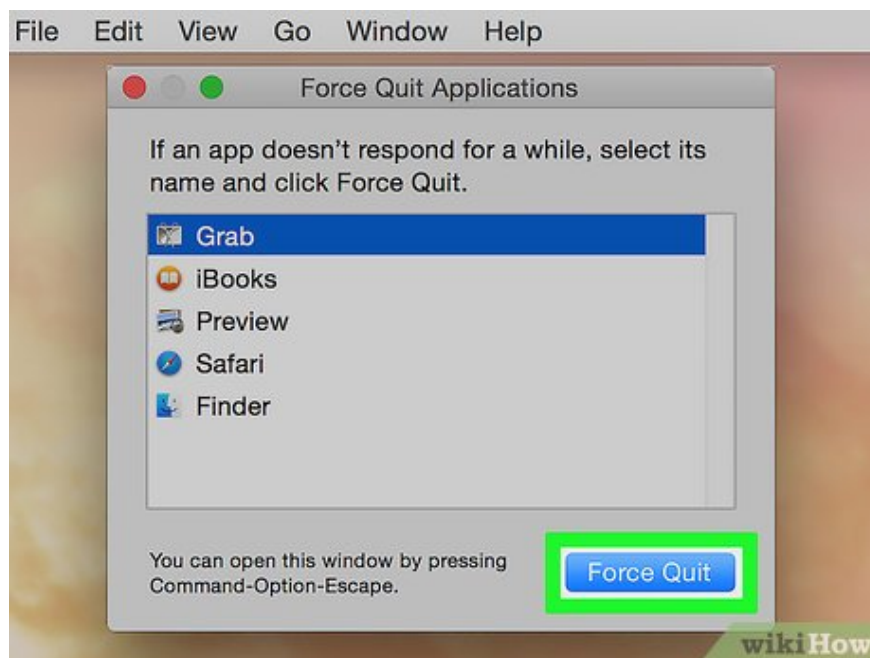


Click Force Quit... It's in the middle of the menu.



Click the application that you want to close.

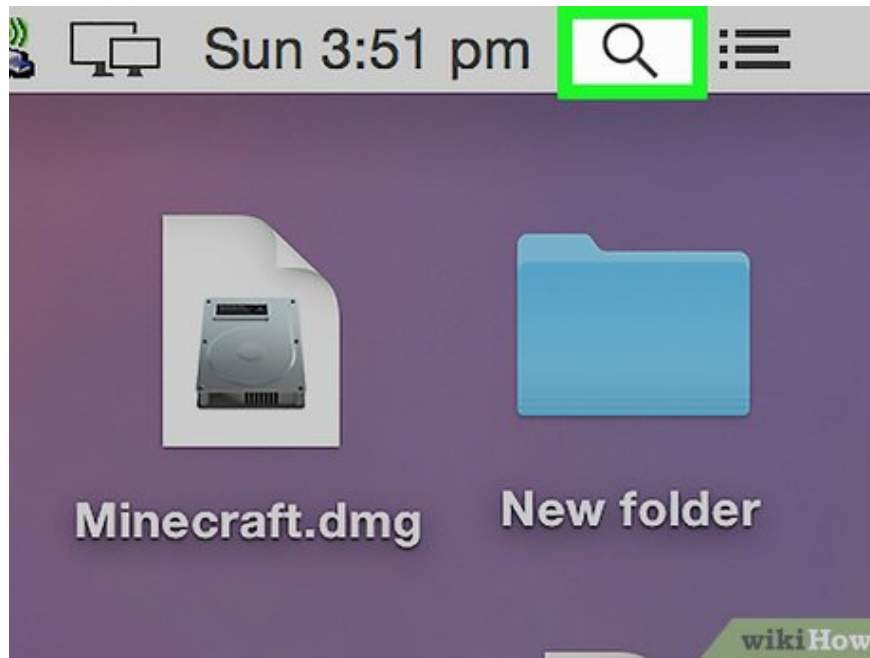
A "(Not Responding)" note will appear next to the frozen application.



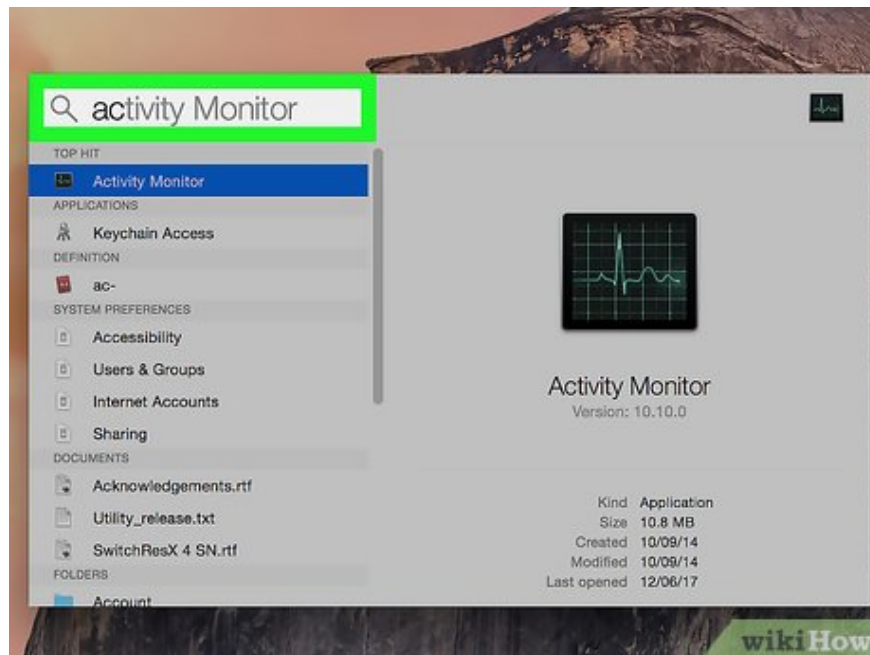
Click Force Quit . The application will be exited and restarted.

You will need to restart if your computer freezes.

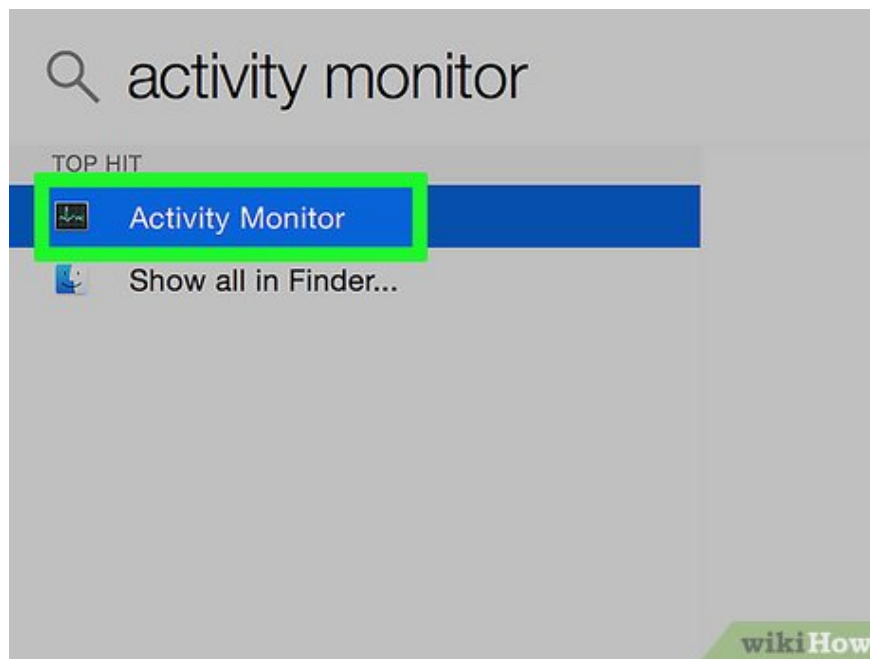
Use Activity Monitor



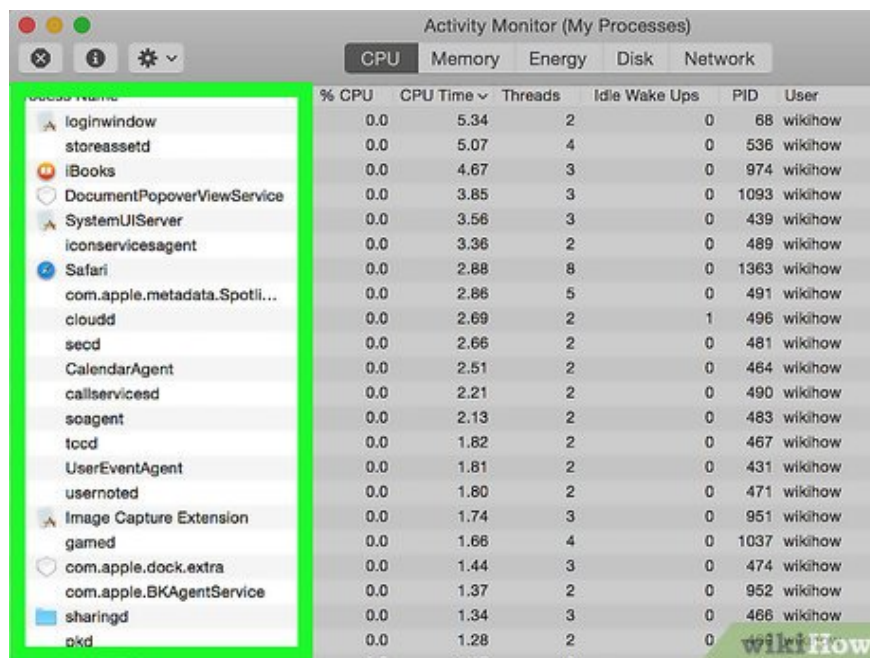
Click the Spotlight app, which resembles a magnifying glass, located in the upper-right corner of the screen.



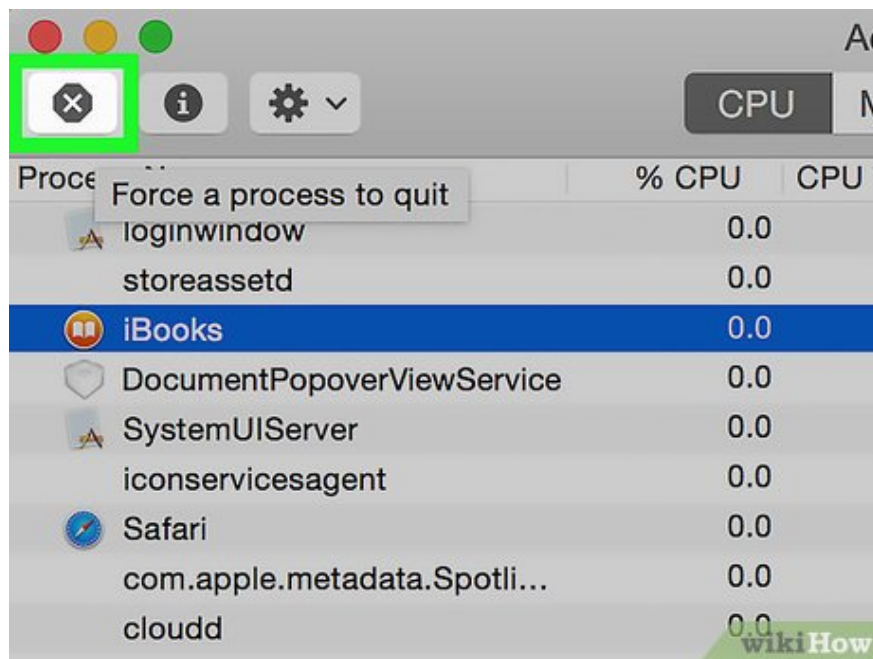
Type "Activity Monitor" into the search data area.



Click Activity Monitor under "Applications."

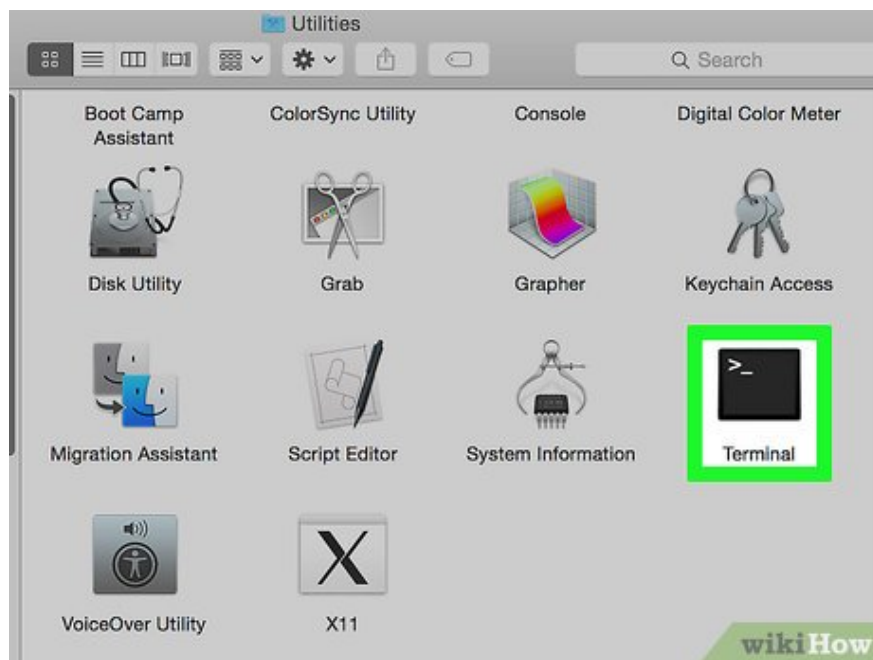


Click the application that you want to close.



Click "Quit Process" in the upper left corner of the window. The application will stop running.

Use Terminal



Open the Terminal utility. By default, the application is located in the Utilities folder of the large Applications folder.

If the regular Force Quit method doesn't work, use this method to close the program.

```
wikihow — bash — 80x24
Last login: Fri Jul 7 20:22:00 on ttys000
wikihowcoms-Mac:~ wikihow$ top
```

Type "top" and press ? Return. The 'top' command will display information about running applications.

```
wikihow — top — 80x24
Processes: 188 total, 2 running, 5 stuck, 181 sleeping, 638 threads
Load Avg: 1.42, 1.47, 1.43 CPU usage: 1.39% user, 2.79% sys, 95.81%
SharedLibs: 9320K resident, 10M data, 0B linkedit.
MemRegions: 20780 total, 486M resident, 39M private, 189M shared.
PhysMem: 1853M used (296M wired), 194M unused.
VM: 450G vsize, 1062M framework vsize, 64(0) swapins, 6565(0) swapout
Networks: packets: 801105/928M in, 695801/38M out.
Disks: 220357/6633M read, 537937/8937M written.

PID COMMAND %CPU TIME #TH #WQ #PORT MEM PURG CMPRS
1422 top 0.3 00:00.77 1/1 0 19 1608K 0B 0B
1418 bash 0.0 00:00.02 1 0 15 540K 0B 0B
1417 login 0.0 00:00.14 2 0 27 888K 0B 0B
1415 Terminal 0.6 00:01.59 7 1 182 14M 20K 0B
1412 helpd 0.0 00:00.03 2 0 34 948K 0B 0B
1409 CVMCompiler 0.0 00:00.47 2 1 28 13M 0B 0B
1406 Activity Mon 0.0 00:12.54 6 3 198 25M 3180K 0B
1373 QuickLookSat 0.0 00:00.15 2 0 40 968K 0B 964K
1372 quicklookd 0.0 00:00.20 4 0 75 1428K 0B 1104K
1370 webinspector 0.0 00:00.17 2 0 42 556K 0B 1072K
1368 com.apple.We 0.0 00:00.10 4 1 78 424K 0B 1676K
1366 com.apple.We 0.0 00:00.24 6 0 156 1204K 0B 8908K
1365 CoreServices 0.0 00:00.14 3 0 127 1524K 0B 2896K
1363 Safari 0.0 00:02.88 8 0 262 6532K 0B
```

Find the program you want to close. Under the column titled "COMMAND," find the name of the app you want to disable.

The COMMAND list can use the shortened name of the program. Find a name that sounds similar to the show you want to star in.

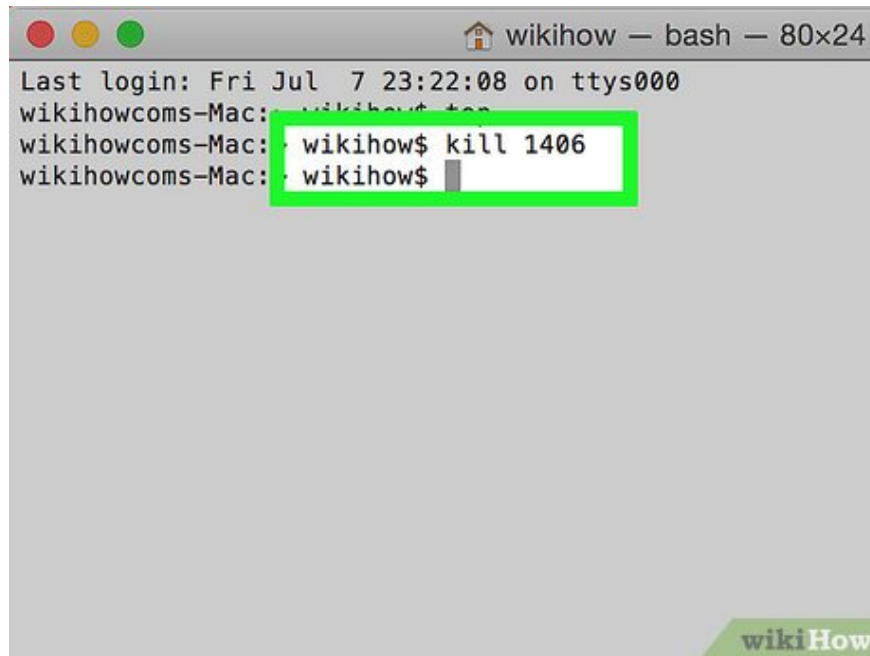
```
wikihow - top - 80x24
Processes: 188 total, 2 running, 4 stuck, 182 sleeping
Load Avg: 1.66, 1.52, 1.45  CPU usage: 0.94% user, 2.3% system, 0.00% nice
SharedLibs: 9344K resident, 10M data, 0B linkedit.
MemRegions: 20780 total, 486M resident, 39M private, 10M shared
PhysMem: 1854M used (296M wired), 192M unused.
VM: 450G vsize, 1062M framework vsize, 64(0) swapins,
Networks: packets: 801132/928M in, 695805/38M out.
Disks: 220379/6635M read, 537978/8938M written.

PID  COMMAND      %CPU  TIME    #TH  #WQ  #PORT  MEM
1422  top           4.2   00:02.16  1/1  0    19    1608K
1418  bash          0.0   00:00.02  1    0    15    540K
1417  login         0.0   00:00.14  2    0    27    888K
1415  Terminal     0.5   00:02.05  9    3    197   14M
1412  helpd        0.0   00:00.03  2    0    34    948K
1409  VMCompiler   0.0   00:00.47  2    1    28    13M
1406  Activity Mon  0.0   00:12.58  6    3    198   25M
1373  QuickLookSat 0.0   00:00.15  2    0    40    968K
1372  quicklookd   0.0   00:00.20  4    0    75    1428K
1370  webinspector 0.0   00:00.17  2    0    42    556K
```

Find the PID number (Process ID - code identifying the process you want to stop). After finding the program name, look at the number located immediately to the left of the program, below the PID column. Then, write down this code.

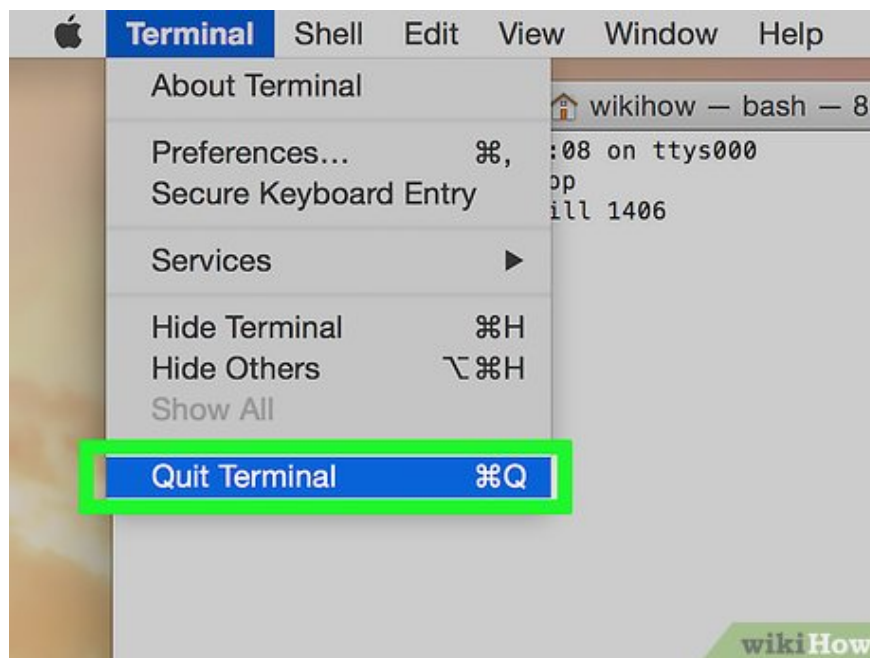


Type "q". This command will exit the list of applications and return you to the command line.



Type "kill ###". Replace the "###" signs with the number you just determined from the PID column. For example, if you want to turn off iTunes and the program has a PID code of 3703, you would type "kill 3703".

If the program does not respond to the 'kill' command, type 'sudo kill -9 ###', replacing the ### with the PID number.



Exit Terminal. The application will automatically close and restart.

You finished reading the article "**How to Force an App to Shut Down on Mac OS X**" edited by the [TipsMake](#) team. We hope this article has provided you with many useful tech tips and tricks. You can search for similar articles on tips and guides. Thank you for reading and for following us regularly.
