

How to fix Windows Has Stopped This Device Code 43 error on Windows 10

Windows Has Stopped Error This Device Code 43 or Windows has stopped this device because it has reported problems. (code 43) is one of many error codes in Windows Device Manager.

Every time users encounter the error " *Windows Has Stopped This Device Code 43* " while using a laptop or desktop computer , please refer to the article for more details on how to solve this problem.

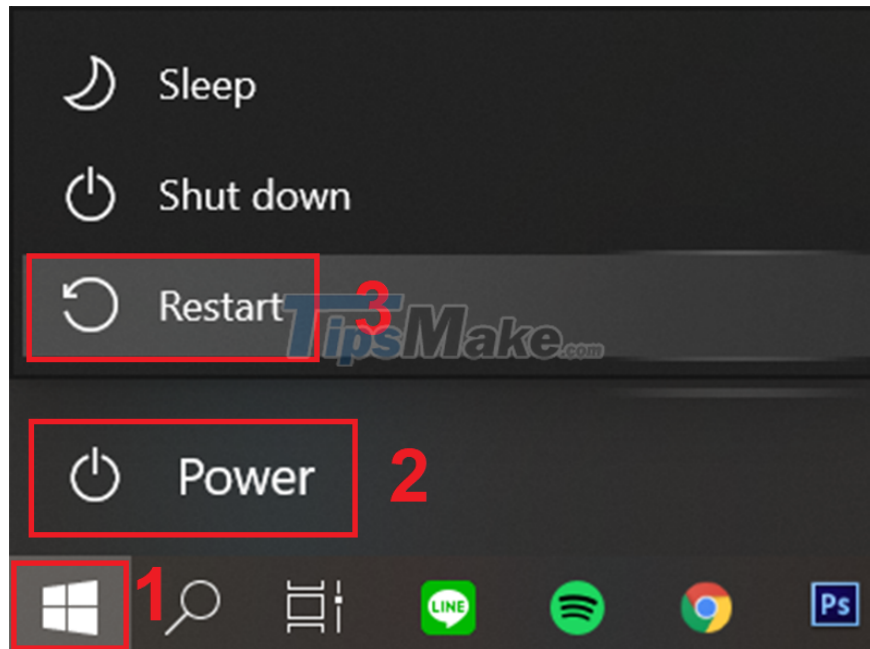
Causes of Windows Has Stopped This Device Code 43 error:

Windows Has Stopped This Device Code 43 error usually occurs on peripheral devices connected to the computer such as: Graphics card, USB , keyboard, mouse . This error usually occurs when Windows cannot detect the device. on the computer. The cause of this error is due to a faulty hardware support driver, a damaged driver or an old version of the driver. In some cases it may be due to hardware or software problems of the machine.

Here are some ways to fix **Windows Has Stopped This Device Code 43** error on windows

1. Reboot the computer

Whenever the computer shows an error, we all think of the first solution is to restart the computer. In many cases, just restarting the computer and the problem will be solved. How to do it is very simple, click Start> Select Power> Select Restart.



2. Due to the device incompatible with the computer

User can check if the device is damaged by plugging it into another computer. If the device is plugged into another machine and the device can still be used normally, it may be due to the device incompatibility with your computer or driver error. If the driver error, the reader refer to the next 3, 4, 5 to know how to fix the driver.

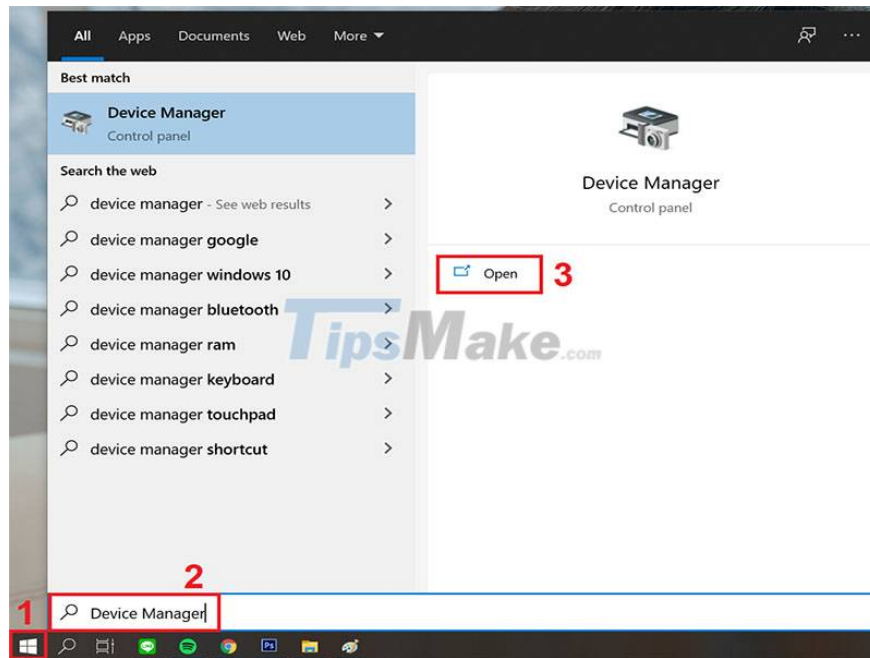


3. Turn the device off and on again in Device Manager

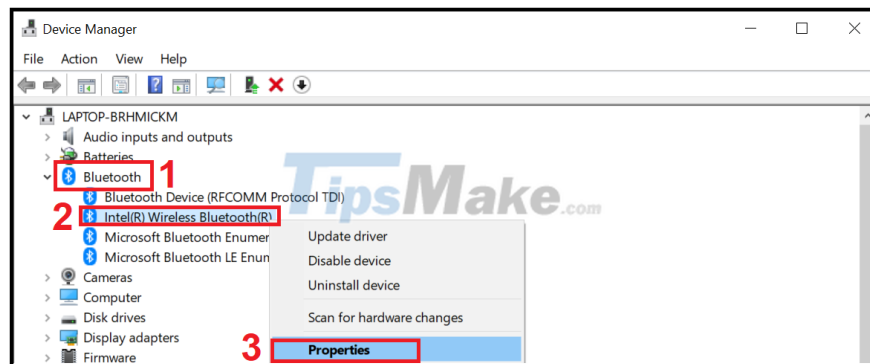
Users can try turning the device off and on again to fix the error. To implement this method there are the following steps.

Step 1: Press the Windows button on the keyboard or the Start button in the left corner of the screen> Type Device Manager> Press Enter.

??

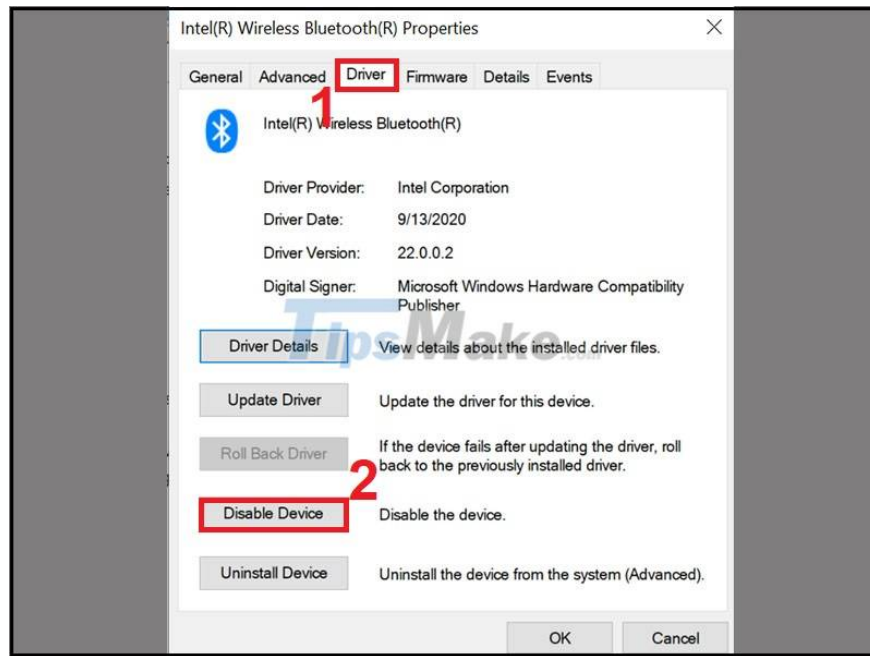


Step 2: Assuming the device's Bluetooth is having problems, we will click Bluetooth device> Right-click Intel (R) Wireless Bluetooth (R)> Select Properties.



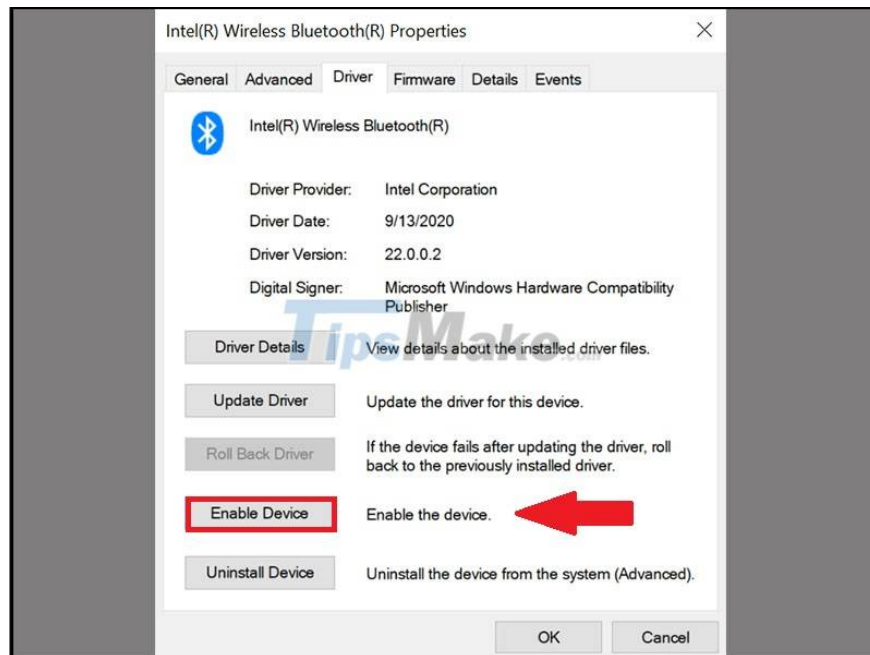
Step 3: In the Drive tab, select Disable Device to turn off the device.

?



Step 4: Next, at that location, Enable Device will appear, please click on it to turn on the device.

??



4. Update to new version for Windows

Sometimes Windows Has Stopped This Device Code 43 error can be caused by the current version of Windows is outdated. Please check to see if Windows has new updates in the following way.

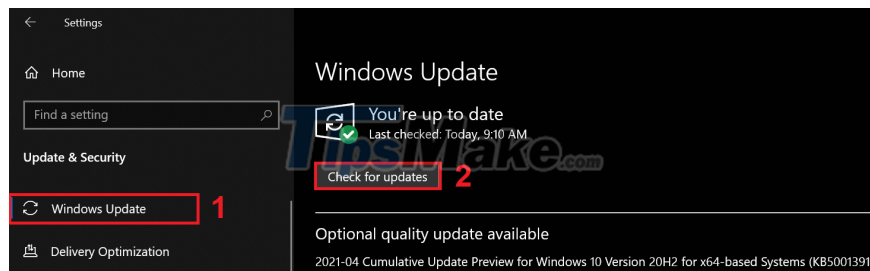
Step 1: Click Start> Select Settings.



Step 2: Select Update & Security.



Step 3: Select Windows Update> Select Check for updates to check for updates.



5. Change the power management settings for the USB Root Hub

This problem can sometimes be caused by the default setting in Windows to power off unused USB ports. To make changes, open Device Manager as described in Part 3.

Step 1: Select Universal Serial Bus controllers> Right-click USB Root Hub (USB 3.0)> Select Properties.

?



Step 2: Select the Power Management tab> Uncheck the option Allow the computer to turn off this device to save power> Select OK. Then restart the computer.

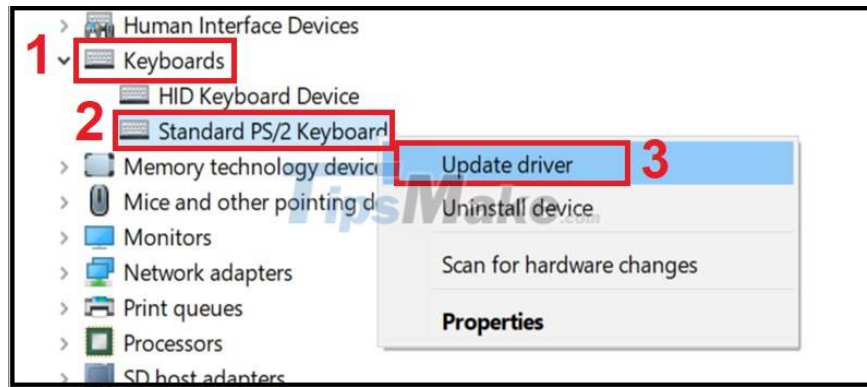
??



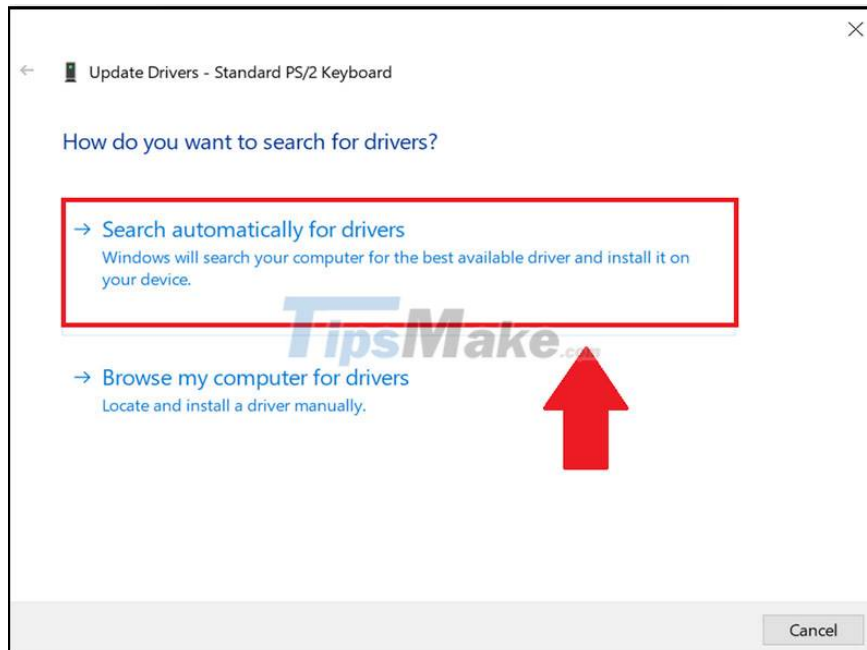
6. Update the driver to the new version

If the driver is too old or outdated, the user has not updated the driver for a long time, they should update as soon as possible. To perform the update, open Device Manager as instructed in Part 3.

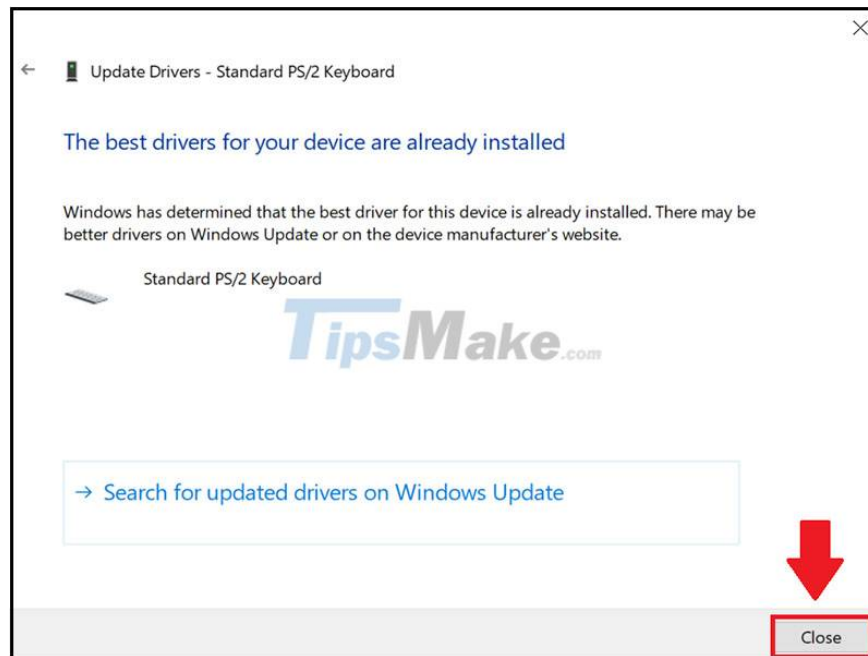
Step 1: Select a device to update, for example we choose to update the Keyboard driver by clicking on Keyboards> Right-click Standard PS / 2 Keyboard> Select Update driver.



Step 2: Select Search automatically for drivers.



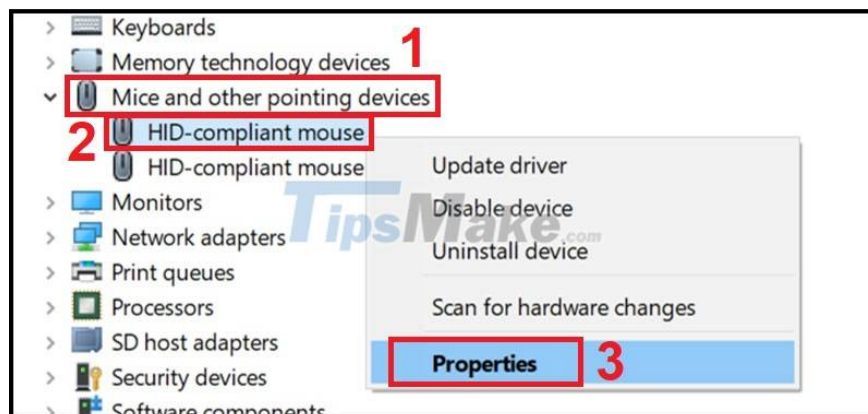
Step 3: Wait for the computer to search and update itself> Select Close to close the window.



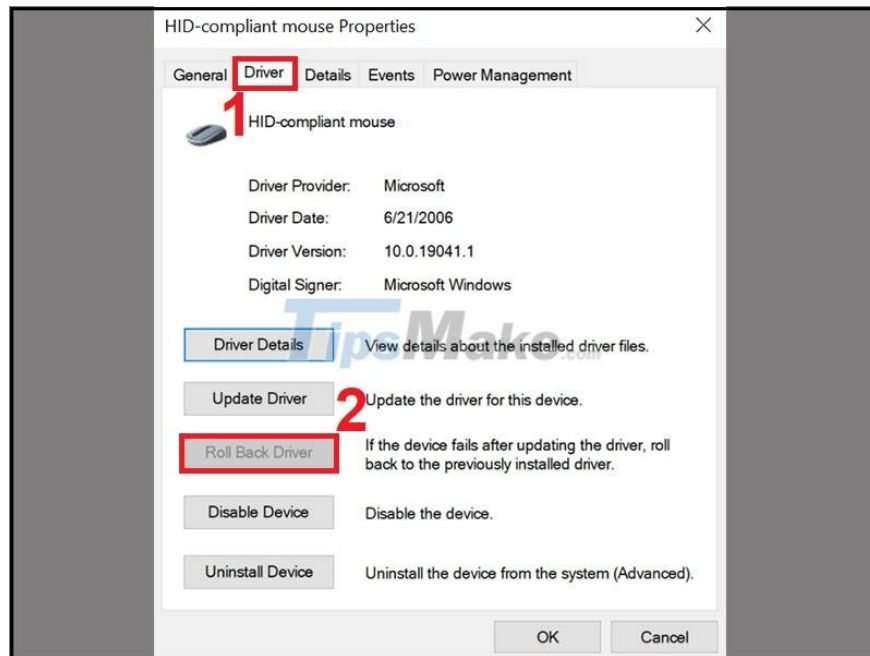
7. Return the defective driver to the previous version

New driver versions may be faulty or incompatible with your computer and cause Windows Has Stopped This Device Code 43 error. So you should bring the driver back to the previous version, wait a few days and then update Driver to a new version. To make changes, open Device Manager as described in Part 3.

Step 1: Assuming your mouse has a problem, we'll click Mice and other pointing devices> Right-click HID-compliant mouse> Select Properties.



Step 2: Open the Driver tab> Select Roll Back Driver to bring the driver back to the previous version.



Bring the driver back to the previous version

8. Uninstall and reinstall the driver

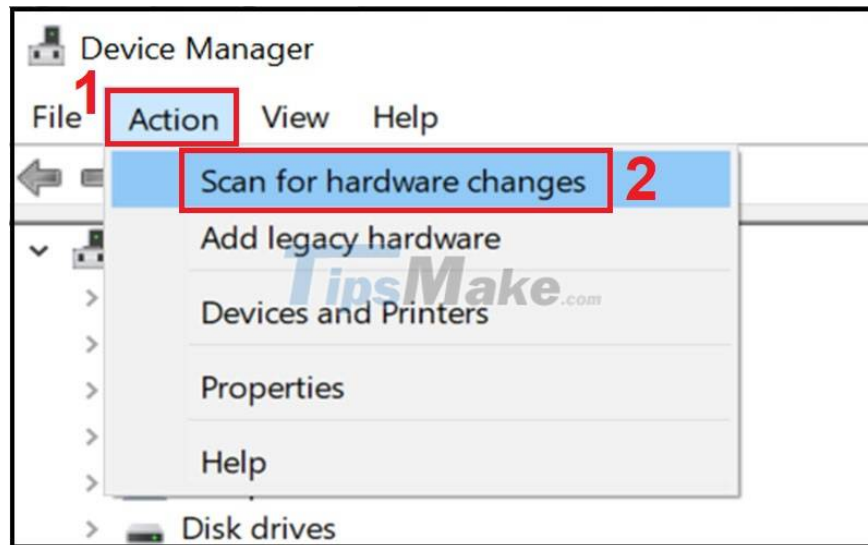
Another solution to fix the problem is to uninstall and reinstall the driver. To do this, open Device Manager as instructed in Part 3.

Step 1: Select the device with the driver problem (usually there will be a yellow exclamation mark next to the problematic device)> Right-click on the device> Select Uninstall> Select OK.



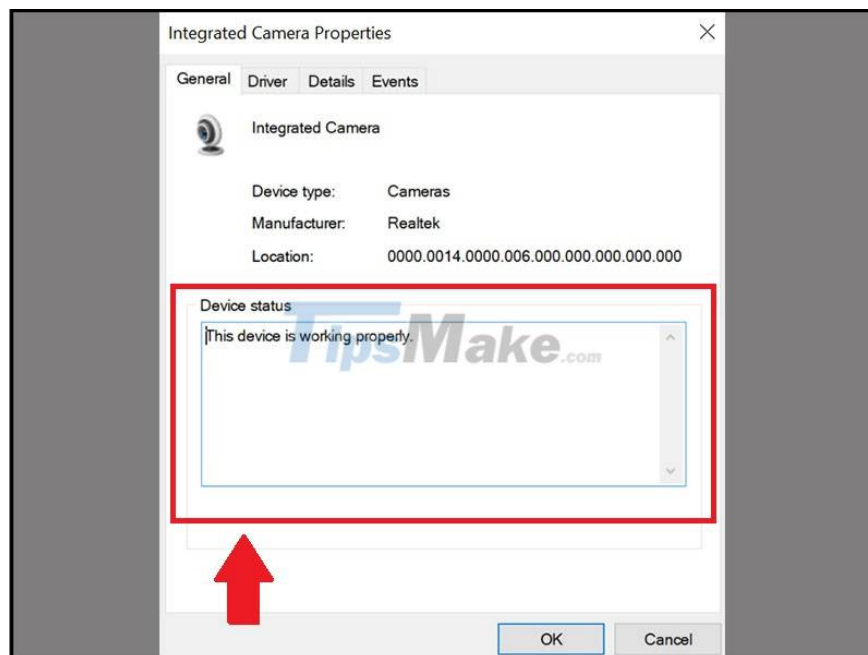
Uninstall device problem

Step 2: Once removed, click Action> Select Scan for hardware changes. This will reinstall the device drivers.



Scan for hardware changes

Step 3: To check that the device after being reinstalled works normally, double-click on the device. On the general tab under Device status it says "This device is working properly." then the device problem has been resolved.

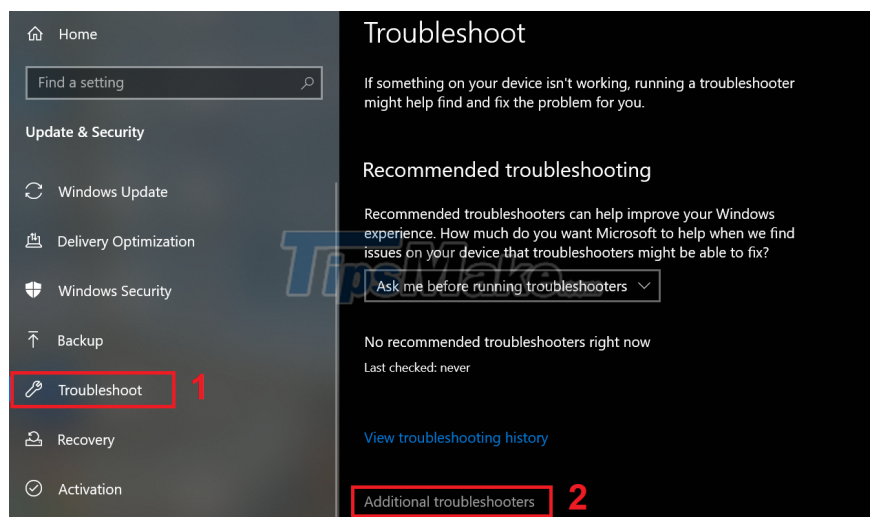


The error has been corrected and the device is working normally

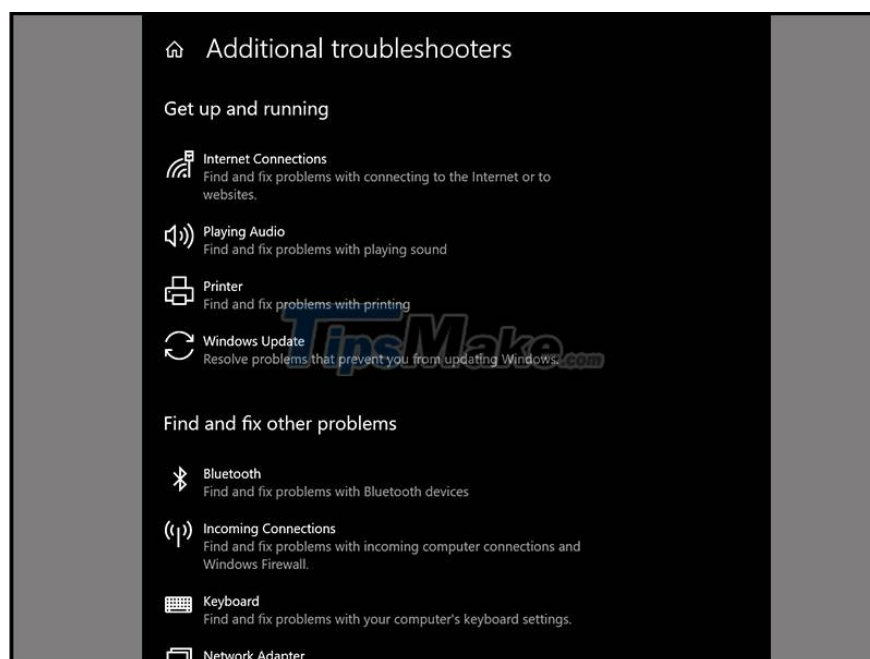
9. Use the TROUBLESHOOT feature

The last solution to fix the problem is to use Troubleshoot feature. To do this, open Update & Security as instructed in part 4.

Step 1: Select Troubleshooting > Additional troubleshooters.



Step 2: Select the device with the problem then follow the instructions on the screen to resolve the error.



Above are some methods to fix Windows Has Stopped This Device Code 43 error. Thank you for watching and see you in the following articles.

You finished reading the article "**How to fix Windows Has Stopped This Device Code 43 error on Windows 10**" edited by the [TipsMake](#) team. We hope this article has provided you with many useful tech tips and tricks. You can search for similar articles on tips and guides. Thank you for reading and for following us regularly.