

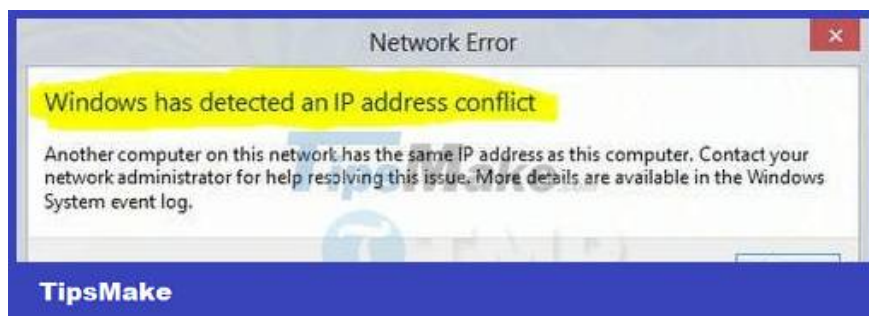
How to fix Windows Has Detected An IP Address Conflict error

Are you facing the Windows Has Detected An IP Address Conflict error when connecting your computer or laptop to a wireless network or through an Ethernet cable? Here are 3 ways to fix Windows Has Detected An IP Address Conflict error.

When connecting your computer, smartphone, or any other device to the local network, all of these devices will receive a single IP address. The main purpose of using this IP address is to distinguish each device on the same network as well as to communicate with other networks. You can also call this address your internal IP address (IP stands for Internet Protocol).

For example, when you connect a laptop, and a smartphone on the same wireless network, then each of these devices will have its own IP address, and that is the unique IP address.

However, many times, misconfiguration or setting the wrong IP address can cause **IP address conflict errors**. If you are using a Windows computer, an error message of the form: **Windows Has Detected An IP Address Conflict** will be displayed on the screen.



How to fix Windows Has Detected An IP Address Conflict error

It can be understood that the error occurs because there are 2 devices using the same IP address on the same local network. As mentioned above, each device must have a unique IP address in order to function properly. Otherwise the device cannot communicate with other devices and cannot access the Internet and is listed as unconnected devices.

Here Taimienphi.vn will guide you 3 ways to **fix Windows Has Detected An IP Address Conflict error**.

Restart your Wifi Modem or Router

In many cases, a simple startup can help you fix Windows has detected an IP address conflict immediately. Here are 2 ways to restart your modem or Wifi Router:

- First log in to the management page (usually 192.168.0.1, 192.168.1.1, or 192.168.11.1), then go to **Management => Reboot** .

- The second way is to turn off the power (unplug the power cord or press the power button) your modem or Wifi Router and wait for a few seconds and then turn it back on.

After your modem or Wifi Router has finished booting, try to connect to your computer again and check if the error Windows has detected an IP address conflict persists.

Reset IP configuration via Command Prompt

If after restarting the modem or Wifi Router, the Windows has detected an IP address conflict error still appears, most likely the cause of the error is your computer. So the solution in this case is to force Windows to ask the DHCP server (modem/router) to provide a new IP address. To do this you will have to reset all IP address configurations as well as release and renew an IP address.

First press the Windows + X key combination and then press **A** and select **Yes** to open the Command Prompt under Admin.

Next, enter the following commands one by one into the Command Prompt window and press Enter:

netsh int ip reset c:\reset-log.txt

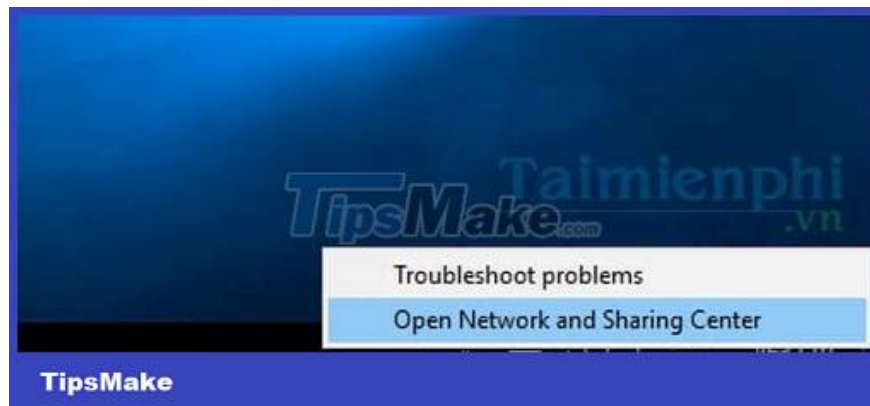
ipconfig /release

ipconfig /renew

After executing the above commands, restart your computer and check if the error Windows has detected an IP address conflict is still there.

Set up a static IP address on your Windows computer manually

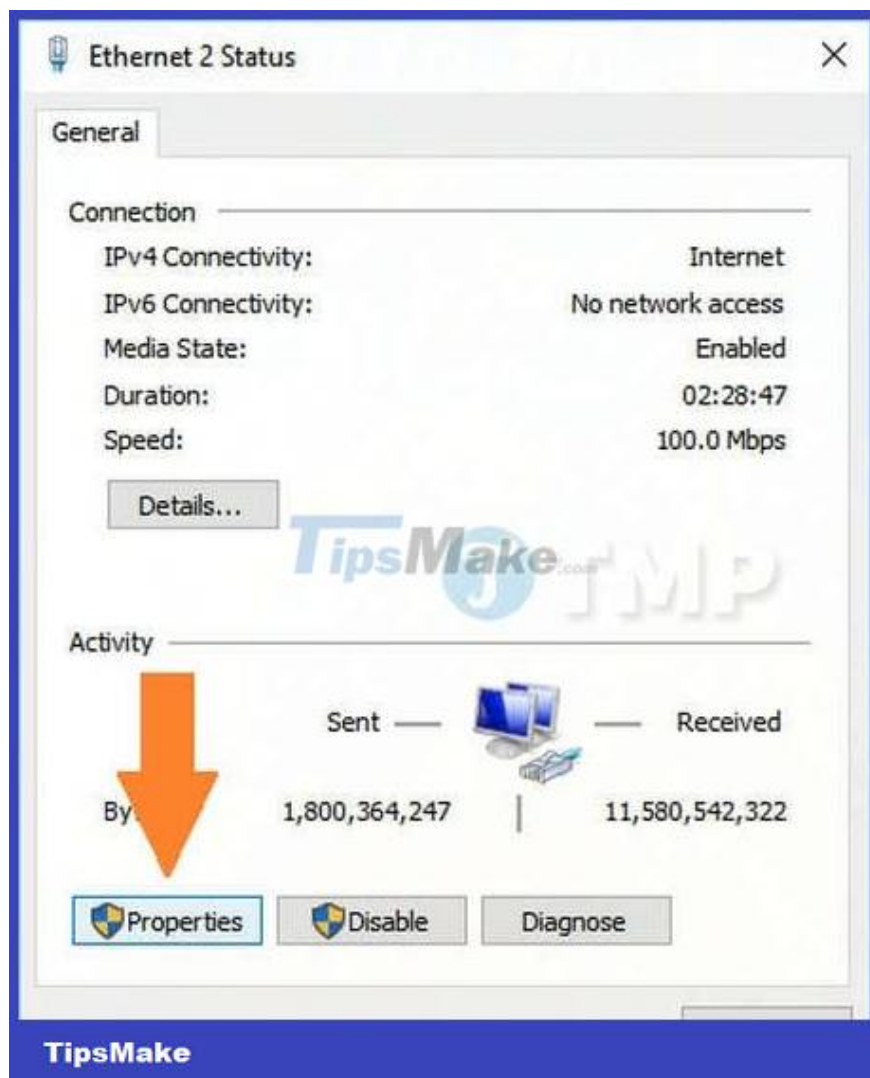
If you have applied the above 2 ways and still cannot fix the error Windows has detected an IP address conflict , you can apply the way to set a static IP address on your Windows computer manually, to set a static IP address, You find and right-click the network icon in the bottom right corner of the Taskbar, select the **Open Network and Sharing Center** option .



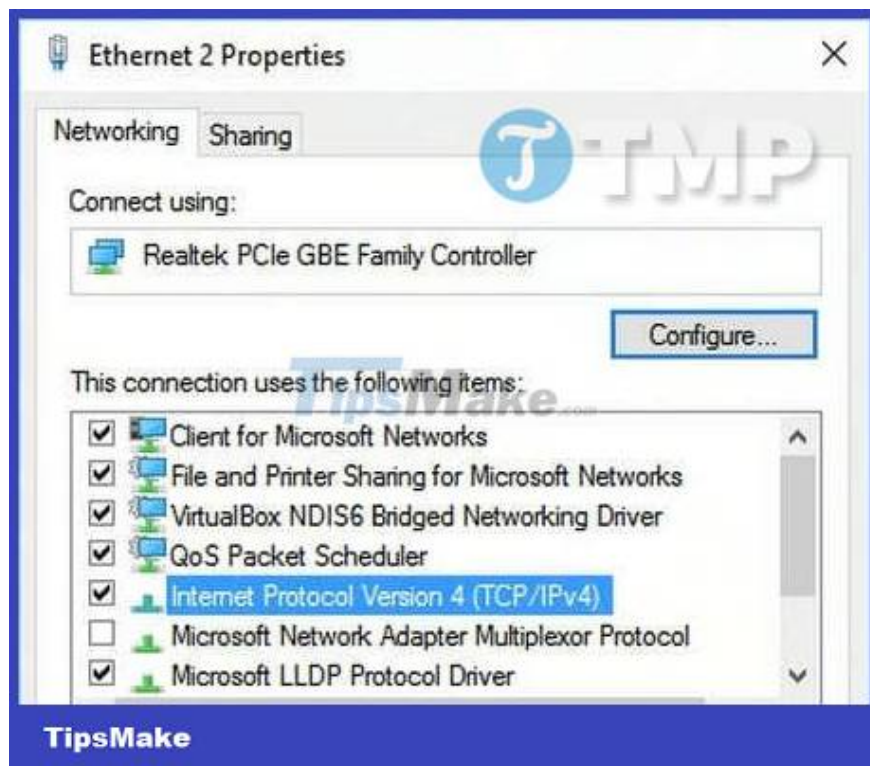
On the Network and Sharing Center window, select the network connection you are using (and also the network connection that is having problems).



Next select **Properties** .



Double click on the **Internet Protocol Version 4 (TCP/IPv4)** option .



The next step is to configure the static IP address according to your modem or router information.

- **IP address** : this is the static IP address of the computer that you want to specify, such as 192.168.1.111.
- **Subnet mask** : subnet mask is usually 255.255.255.0.
- **Default gateway** : this is the router's IP address, this address is usually 192.168.1.1.

Note : if the IP address of your modem and router is different, such as **192.168.11.11** , the static IP address must also be set according to that address, such as **192.168.11.111** . Otherwise your computer cannot connect to the network.

- **Preferred DNS server** : 8.8.8.8
- **Alternative DNS server** : 8.8.4.4

You can also use 3rd party DNS server applications.

Finally click **OK** and restart your computer to apply the changes.

In the above guide, Taimienphi.vn has shown you 3 ways to fix Windows has detected an IP address conflict error on Windows computers. Hope the above methods can help you fix the error.

Besides the above error, another IP-related error is the same IP error is also a pretty serious problem that makes users unable to connect to the internet, fortunately you can do the IP conflict resolution error . This is a simple way according to the instructions of Taimienphi.vn

In addition, if you get the error The Another computer has the same IP address error when using the network, you can refer to how to fix **The Another computer has the same IP address error** here.

<https://thuthuat.taimienphi.vn/sua-loi-windows-has-detected-an-ip-address-conflict-25431n.aspx>

If you have any questions or concerns, you can leave them in the comment section below. Comments, Taimienphi.vn will answer all your questions.

You finished reading the article "**How to fix Windows Has Detected An IP Address Conflict error**" edited by the [TipsMake](#) team. We hope this article has provided you with many useful tech tips and tricks. You can search for similar articles on tips and guides. Thank you for reading and for following us regularly.