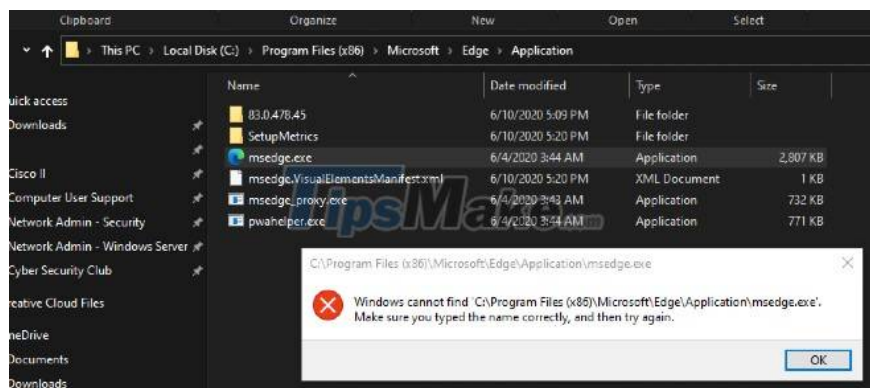


How to fix Windows cannot find msedge.exe

Windows cannot find msedge.exe error can also occur with some applications. When opening the Edge browser or other application, some Windows 10 users have encountered the following error:

"Windows cannot find 'C:\Program Files (x86)\MicrosoftEdgeApplicationmsedge.exe'. Make sure you typed the name correctly, and then try again."



So what causes this error? How to prepare? We invite you to find out.

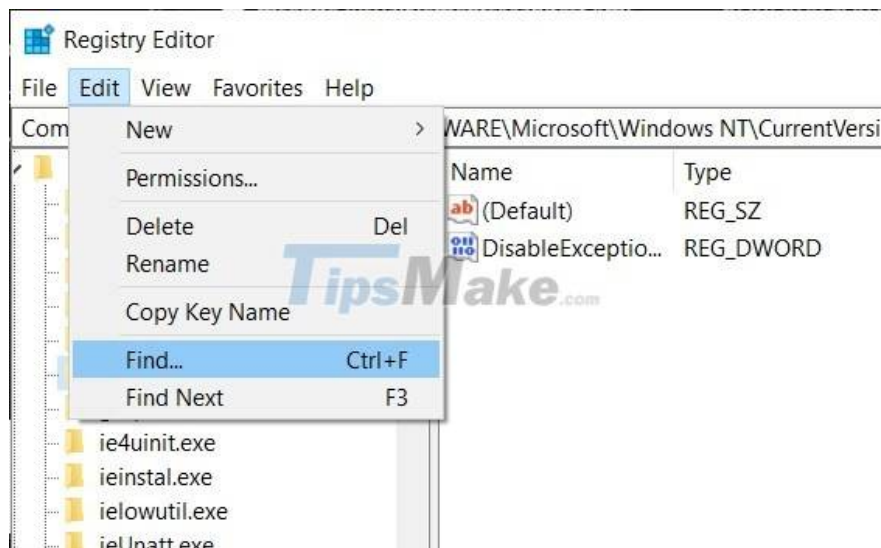
The cause of the error Windows cannot find msedge.exe

This error often occurs with users who have installed third-party antivirus software such as McAfee, Symantec, Norton, Avast, AVG on Windows 10. These antivirus software often change system settings and when they are uninstalled your system may get the error Windows cannot find msedge.exe.

How to fix Windows cannot find msedge.exe error

Step 1: Delete data related to anti-virus software

1. You press Windows + R to open Run then type regedit and press Enter to open Registry Editor
2. Next, go to Edit > Find in the Registry Editor window
3. Type avg, avast. depending on the anti-virus software you installed before to search
4. Delete every key you find except the key (Default)



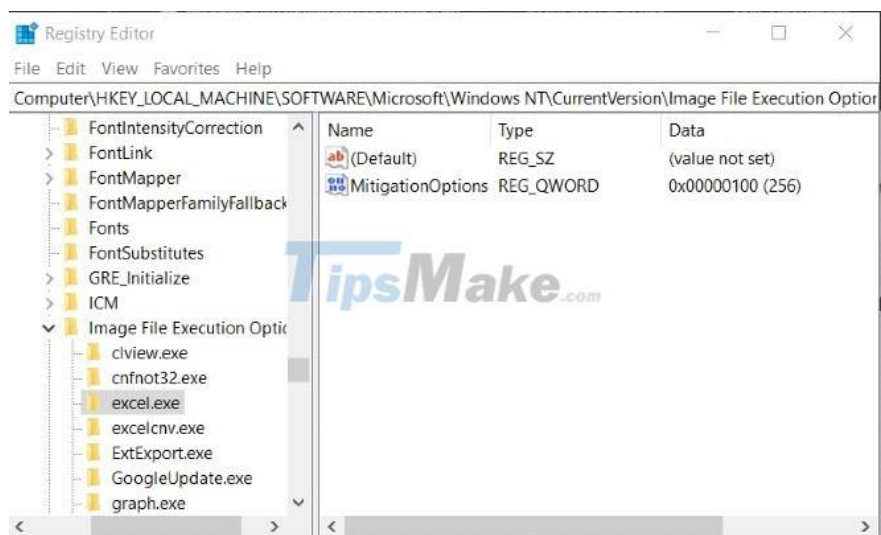
Step 2: Edit the information of the software in Registry Editor

In this step, we take Microsoft Edge as an example with the msedge.exe file. With other software you do the same to fix.

You press Windows + R to open Run then type regedit and press Enter to open Registry Editor

Search to:

HKEY_LOCAL_MACHINE\SOFTWARE\Microsoft\Windows NT\CurrentVersion\Image File Execution Options



Here, you will see many entries with the .exe extension, find the item you need to edit. We find the msedge.exe entry

Here, you delete all the keys below the key (Default)

Next, click the arrow next to the msedge.exe entry to expand it

You should see a subsection below it named "23446da6ceb8c06f_PD". With other software, the subsection will have a different name but the operation is still the same

In the subsection, you delete all the keys below the key (Default), including the key named Debugger "C:Program Files(x86)MicrosoftEdgeApplicationmsedge.exe"

After completing these steps, you need to restart the machine to complete the error correction.

Good luck!

You finished reading the article "**How to fix Windows cannot find msedge.exe**" edited by the [TipsMake](#) team. We hope this article has provided you with many useful tech tips and tricks. You can search for similar articles on tips and guides. Thank you for reading and for following us regularly.