

How to fix Windows cannot be installed to this disk. The selected disk has an mbr partition table

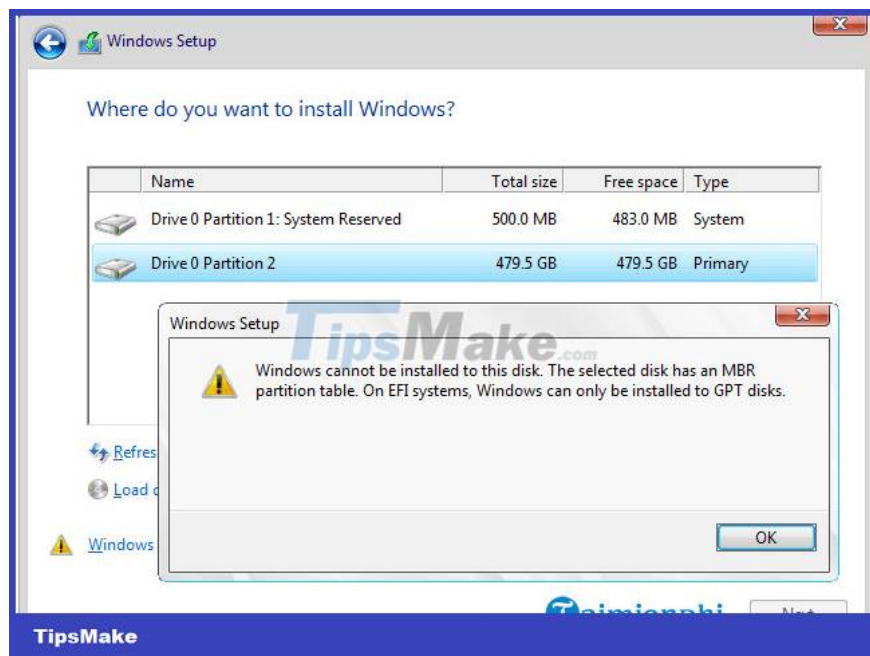
During the installation of Windows operating system, some users reported they encountered the error 'Windows cannot be installed to this disk. The selected disk has an MBR partition table'. In the following article, TipsMake will guide you in some ways to fix the 'Windows cannot be installed to this disk. The selected disk has an MBR partition table'

The error " **Windows cannot be installed to this disk. The selected disk has an MBR partition table** " occurs because the computer hardware does not support booting to this drive. Refer to the following article of Taimienphi.vn to learn how to fix the "Windows cannot be installed to this disk. The selected disk has an mbr partition table" error.



Fix "Windows cannot be installed to this disk. The selected disk has an mbr partition table"

To find out what is the difference between MBR Partition and GPT Partition, readers can refer to the article **comparing MBR Partition and GPT Partition** available on Taimienphi.vn.



How to fix "Windows cannot be installed to this disk. The selected disk has an mbr partition table" error

Method 1: Change BIOS boot settings

Step 1: Proceed to BIOS and change the UEFI boot configuration. All you need to do is temporarily convert the EFI boot entry to SATA or Legacy Mode.

Step 2: Restart the computer and access the BIOS by pressing the Del or F10 key during the boot process, before the Windows logo is displayed on the screen. Depending on different computer models, there are different ways to enter the BIOS.

Step 3: On the BIOS window, access **Boot Devices**, then find **Boot order**, here you can disable EFI or change the DVD drive from UEFI to SATA or Legacy Mode.

Step 4: Save the changes and exit the BIOS window.

Step 5: Restart the computer and try reinstalling Windows to see if the error still occurs.

Method 2: Convert MBR to GPT format via Command Prompt

Note: this method will wipe the data on your hard drive partition. Before performing the steps, Taimienphi.vn recommends that you back up important data to an external hard drive to avoid data loss.

Step 1 : On the Windows installation screen, press **Shift + F10** to open the Command Prompt window.

Step 2 : On the Command Prompt window, enter the following commands one by one and then press Enter:

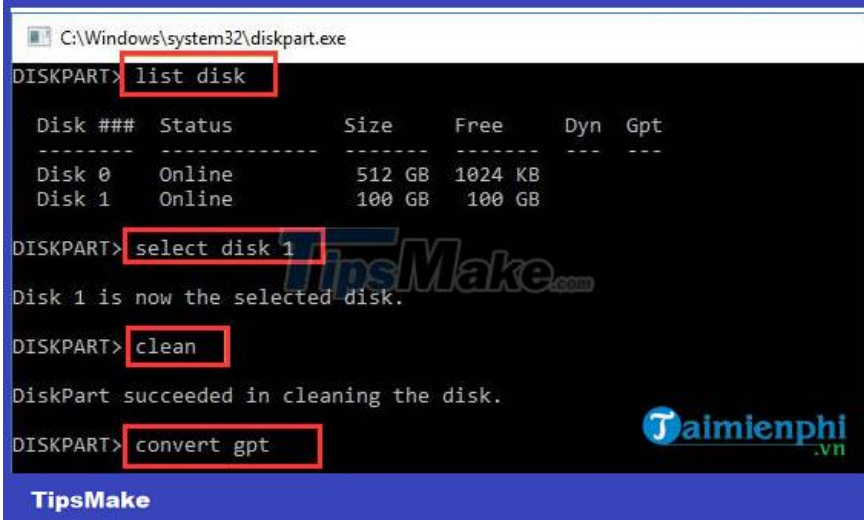
diskpart

list disk (note the drive you want to convert to GPT)

select disk # (replace # with the number of the drive that you convert to GPT)

clean (this command deletes all partitions and data on the drive)

convert gpt



```
C:\Windows\system32\diskpart.exe
DISKPART> list disk

Disk ###  Status             Size             Free             Dyn             Gpt
-----  -
Disk 0    Online              512 GB           1024 KB
Disk 1    Online              100 GB           100 GB

DISKPART> select disk 1
Disk 1 is now the selected disk.

DISKPART> clean
DiskPart succeeded in cleaning the disk.

DISKPART> convert gpt
```

TipsMake.com

Taimienphi.vn

TipsMake

Step 3 : After the drive is converted to GPT, you can create a new partition and install Windows, the error "Windows cannot be installed to this disk. The selected disk has an mbr partition table" does not occur anymore.

<https://thuthuat.taimienphi.vn/cach-sua-loi-windows-cannot-be-installed-to-this-disk-the-selected-disk-has-an-mbr-partition-table-57444n.aspx>

_ Taimienphi.vn has just shown you some ways to fix the error "Windows cannot be installed to this disk. The selected disk has an mbr partition table". In addition, readers can refer to some other articles already on Taimienphi.vn to learn how to **fix Windows cannot connect to the printer error** .

You finished reading the article "**How to fix Windows cannot be installed to this disk. The selected disk has an mbr partition table**" edited by the [TipsMake](#) team. We hope this article has provided you with many useful tech tips and tricks. You can search for similar articles on tips and guides. Thank you for reading and for following us regularly.