

How to fix Windows 8 error not connected to Windows Store

You have installed and used Windows 8, with these new experiences you will encounter errors that are unable to connect to the Windows Store repository. This may occur due to server connection or network connection timeout.

You have installed and used Windows 8, with these new experiences you will encounter errors that are unable to connect to the Windows Store repository. This may occur due to server connection or network connection timeout. In the article below, will help you have solutions to solve this problem.

If the above problem occurs, you will receive a message in Windows 8 as follows:

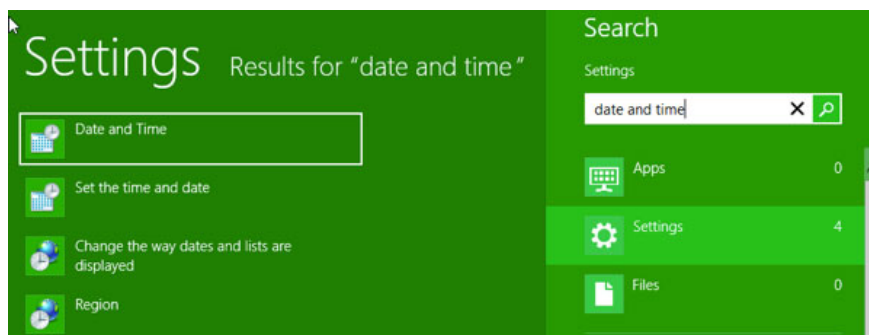


We weren't able to connect to the Store. This might have happened because of a server problem or the network connection timed out. Please wait a few minutes and [try again](#).

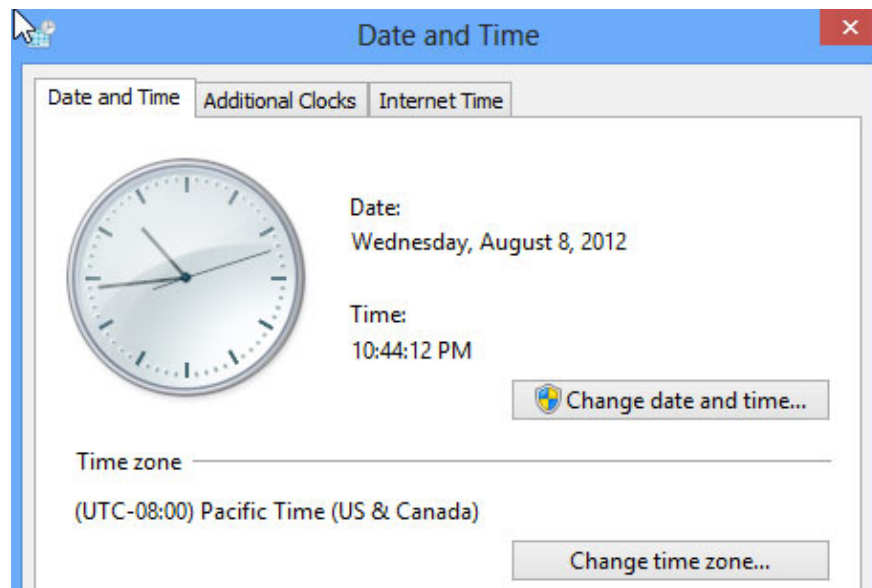
When you receive the above message, try to do some of the following:

Method 1: Check Date & Time

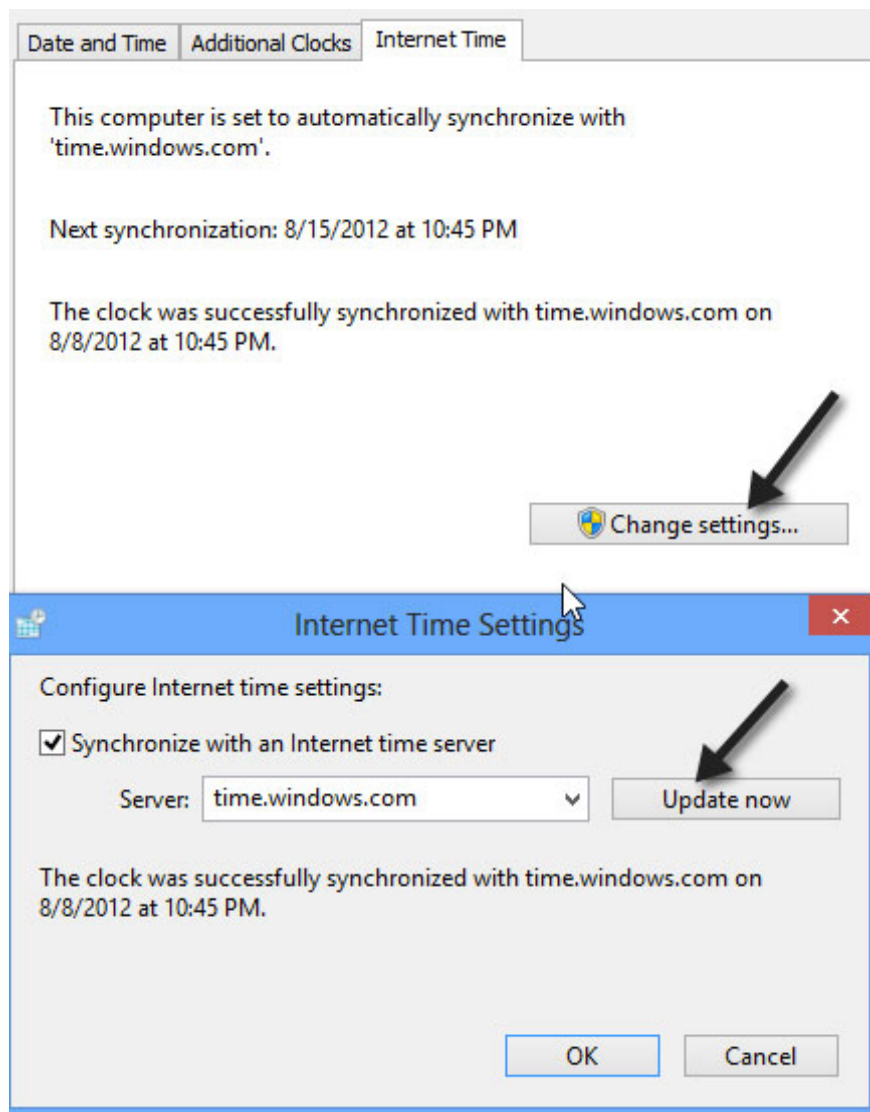
The first thing you need to do is check if the date and time on Windows 8 are set correctly. You will not be able to connect to the Windows Store if the system time is incorrect. You can specify the time by opening the **Charms** bar (**Windows + C**) and then typing in the "**Date and Time** " search box. Click **Date and Time**.



Next, click **Change date and time** to set the correct system time. Also, make sure you have set the correct **Time Zone** in **Change time zone**.



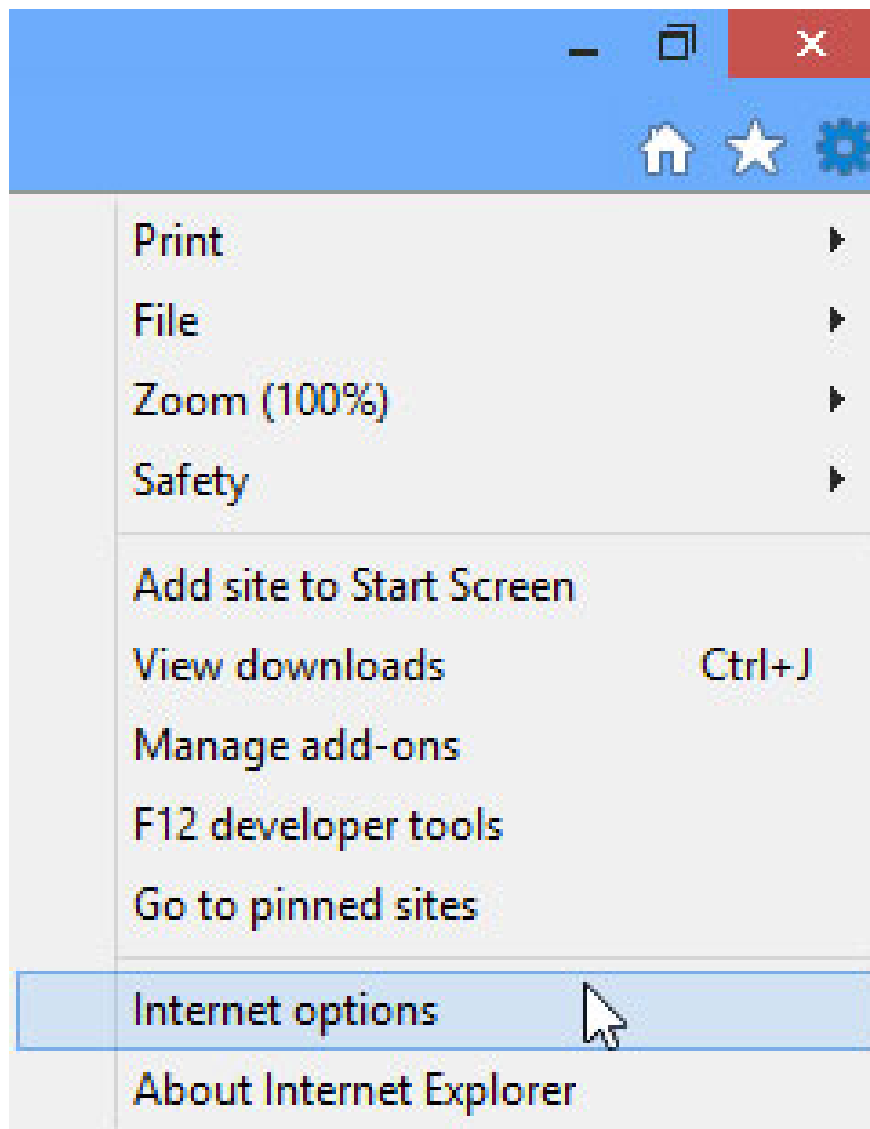
You can click the **Internet Time** tab , next click **Change settings** and then click **Update now** . This will automatically synchronize your computer with **time.windows.com** .



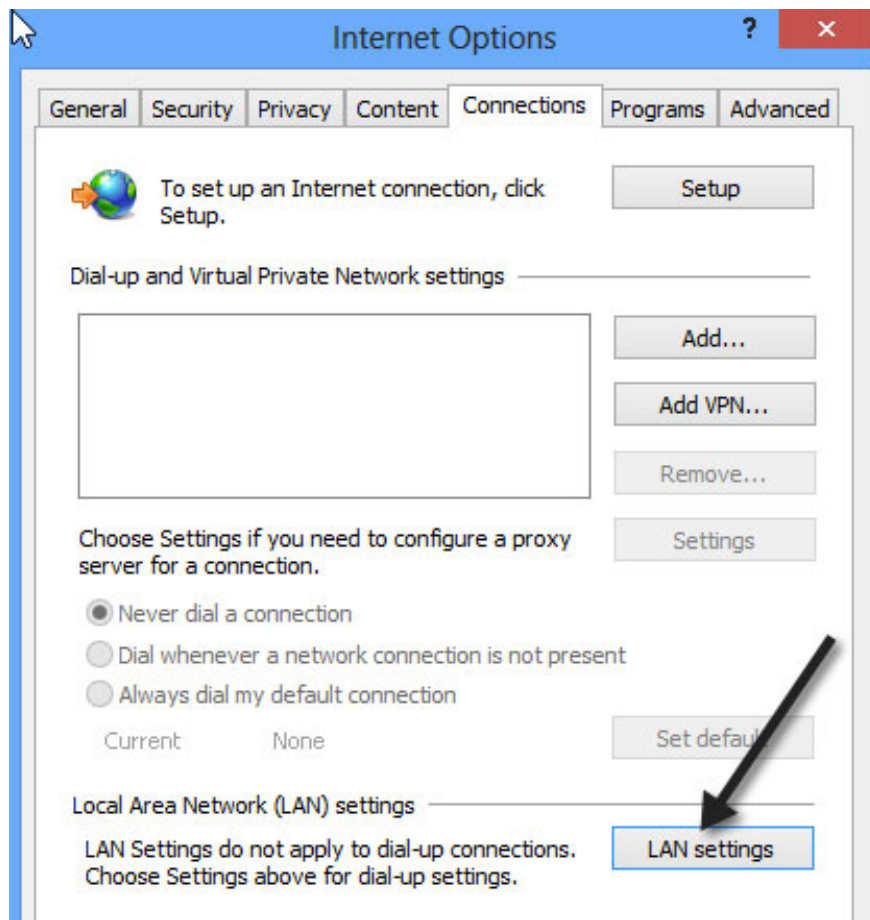
Now, open the Windows App Store again and see the connection status.

Method 2: Check Proxy Server

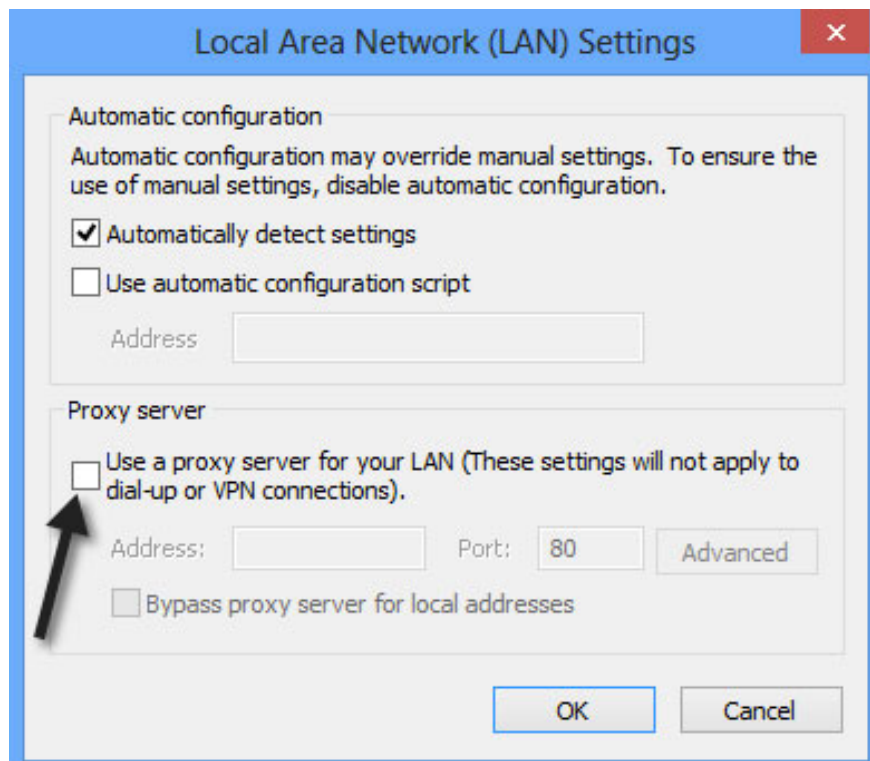
Alternatively, you can check if your system is connecting to the proxy server. If so, disable the proxy server and see if the connection allows you to connect to the Windows Store. You can do this by clicking on the gear icon in the upper right in IE, then clicking **Internet Options**.



Then click on the **Connections** tab and click on **LAN Settings**.



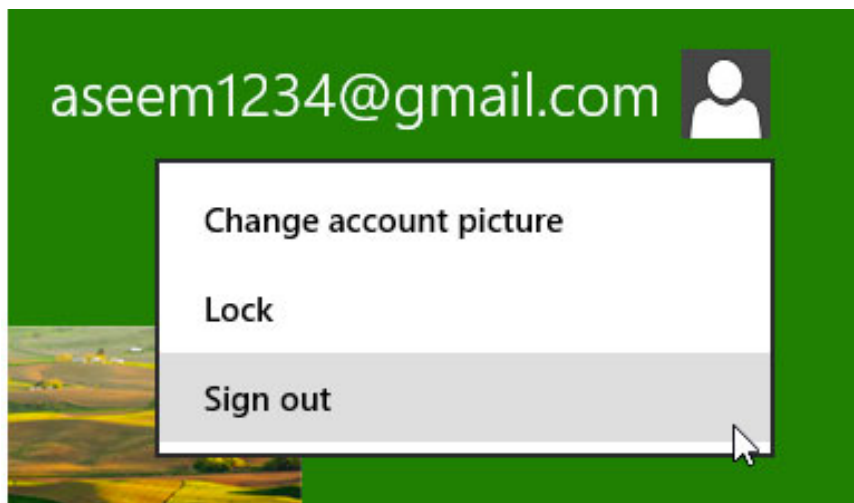
Finally, you uncheck the **Use a proxy server for your LAN** checkbox for your LAN.



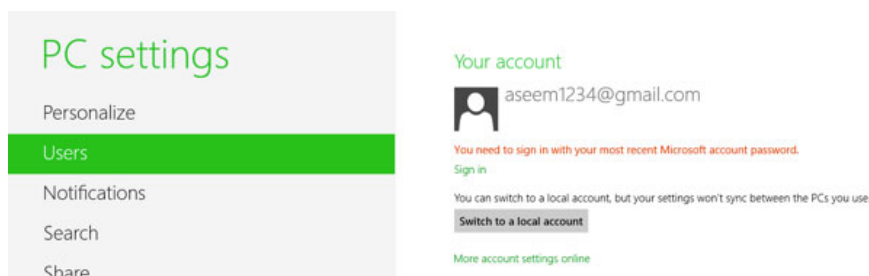
Now, open the **Windows App Store** again and see the connection status.

How to 3. Login or use Local Account

The next thing, you can try to log in to your account and then log out of your Microsoft account, by logging in at **the address** . If your account is locked and cannot be logged out for any reason, such as your password being hacked ., you will have to restore access to your Microsoft account and then log in again. in Windows 8.



Another thing you can try is to switch from a Microsoft account to a local account. You can do this by going to the **Charms** bar , clicking **Settings**, continuing to click **Change PC Settings** and then clicking **Users**.

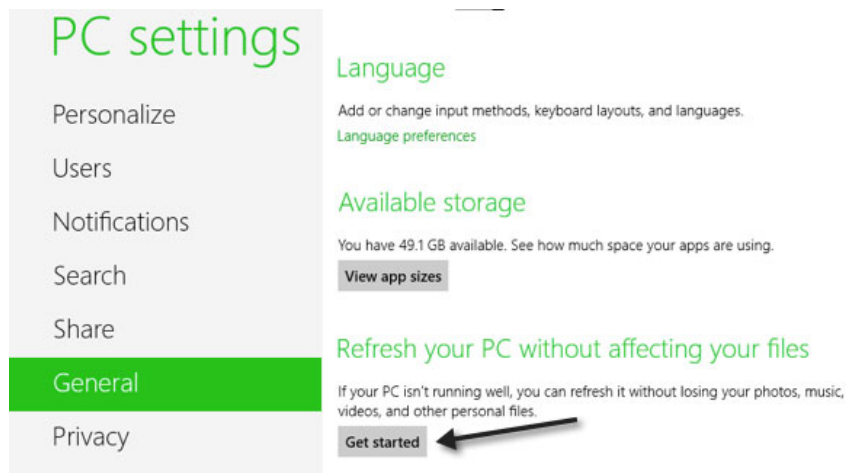


Now, open the Windows App Store again and see the connection status.

How to 4. Refresh the computer

The last thing you can do is refresh your computer. This is not the ideal way to reset your connection to the Windows Store and remove any programs that you have installed from a CD / DVD or Internet. However, if the above ways cannot be better, this may be your only option.

You can go to **PC Settings** as the 3rd way above and click on **General** . Scroll down and you will see the **Refresh your PC** entry **without Download your files** , then click **Get started**.



Hopefully one of the ways above can help you find the connection between your Windows Store and your Windows 8!

You finished reading the article "**How to fix Windows 8 error not connected to Windows Store**" edited by the [TipsMake](#) team. We hope this article has provided you with many useful tech tips and tricks. You can search for similar articles on tips and guides. Thank you for reading and for following us regularly.