

# How to fix Windows 10 automatically activating Sleep Mode instead of locking the screen

Typically, a Windows 10 computer is set up to lock the screen after a few minutes of inactivity. However, some machines have the problem of automatically going into Sleep Mode instead of locking the screen.

The steps to fix the problem Windows 10 automatically go into Sleep Mode instead of locking the screen are as follows:

## 1. Set the login request when waking the computer from Sleep Mode

You can check this setting by visiting the **Settings** app . This setting is called **Require sign-in** . If it is set to **Never** then your computer will not display either the login screen or the lock screen. So anyone can log into your computer after waking up from **Sleep Mode** .

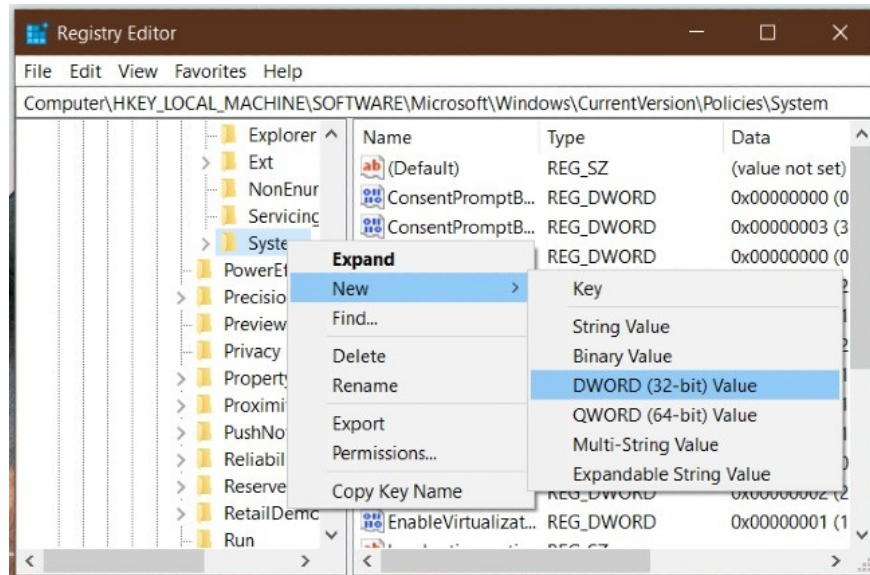
To change this you need to do the following:

1. Press the **Windows + I** key combination to access the **Settings** application
2. **Navigate to Accounts> Sign-in options**
3. On the right side window, you will see a title titled **Require sign-in**
4. Make sure that the **When PC wakes up form sleep** option is selected
5. If not, open the drop-down menu to select it



## 2. Use Registry Editor

Registry Editor is a pretty powerful Windows customization tool. Of course, you can use it to reinstall the screen lock mode for Windows 10. Before doing this, you can back up the Registry file and back up the Windows 10 system as a backup.



Press the **Windows + R** key combination and type regedit and press **Enter** to open the **Registry Editor** . If you receive the UAC confirmation message, click Yes. Next, you need to find the following path:

```
HKEY_LOCAL_MACHINE\Software\Microsoft\Windows\CurrentVersion\Policies\System
```

Right-click on the **System** folder and choose **New > DWORD (320bit) Value** to create a new value. You name the new value as **DisableLockWorkstation** . This value has a default parameter of **0** and you do not need to change it.

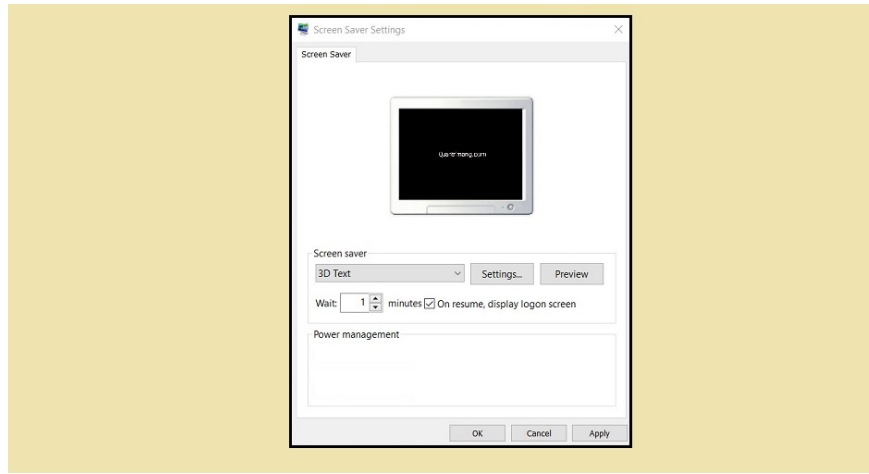
After creating this new value, try to check if your Windows 10 machine can lock the screen or not. Also, if you see the **DisableLockWorkstation** value check it and set its setting to **0** .

## 3. Activate login screen in Screen Saver settings

When setting **Screen Saver** you should also remember this option because it is dangerous if someone can access your device from this mode without logging in.

To set up you need to open the **Settings** app by pressing **Windows + I** then selecting **Personalization > Lock screen** . In the right window, click the **Screen saver settings** option .

You can also search for " **change screen saver** " in **Taskbar** 's search box to open **Screen saver settings** .



Then, in the **Screen saver setting** s window , make sure you click on the checkbox under **On resume, display logon screen** . Then click **Apply** and **OK** to complete.

Good luck.

You finished reading the article "**How to fix Windows 10 automatically activating Sleep Mode instead of locking the screen**" edited by the [TipsMake](#) team. We hope this article has provided you with many useful tech tips and tricks. You can search for similar articles on tips and guides. Thank you for reading and for following us regularly.