

How to fix wifi error of not being able to access the network and the causes

Not being able to access Wifi is one of the most inconvenient problems for users. Not only does it make you uncomfortable, not being able to connect to Wifi will also disrupt your work. To quickly fix this error, join TipsMake to learn how to fix the error of Wifi not being able to access the network as well as the causes leading to this situation!

This method helps you:

- Get wifi networks
- Know network errors

Talking about using Wifi is not as easy as using a network cable because there are many errors that occur during use. And that's not the only thing you can face because in addition to the Wifi error of not being able to access the network, you will also have to encounter many more difficult cases such as a faulty Wifi Modem or problems occurring around it, but In cases where the Wifi Modem is faulty, we will not mention it in this article, but instead, let's focus on the Wifi error of not being able to access the network such as wifi connection such as no Internet on the Laptop, wifi error of not being able to access the network. on phone.

Instructions on how to fix Wifi errors that cannot access the network

To say exactly what causes the Wifi error of not being able to access the network is very difficult when we do not know specifically how the error manifests, but each device has its own unique characteristics, so depending on that causes can be found. In the article below are our experiences in fixing **Wifi errors that cannot access the network** , a question that many readers ask every week.

Article content:

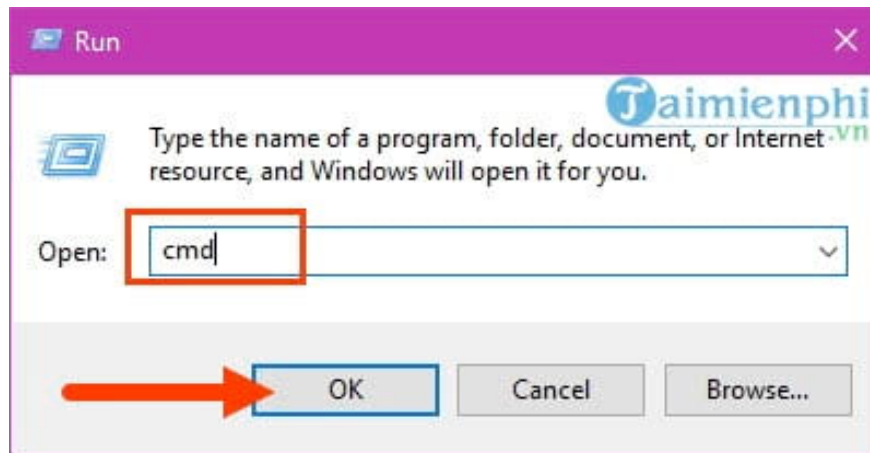
- 1. Fix Wifi error saying Limited Access.**
- 2. Restart the Modem.**
- 3. Set static IP.**
- 4. Reinstall Wifi Modem.**
- 5. Modem failure.**
- 6. If unable to browse the web on devices.**
- 7. Can browse the web on other devices, but not on laptops.**
- 8. Update network card driver.**

1. Fix Wifi error saying Limited Access

The Wifi situation reporting Limited Access error is mostly due to the Wifi modem having an error that cannot broadcast the IP address and sometimes due to IP confusion leading to the Wifi error of not being able to access

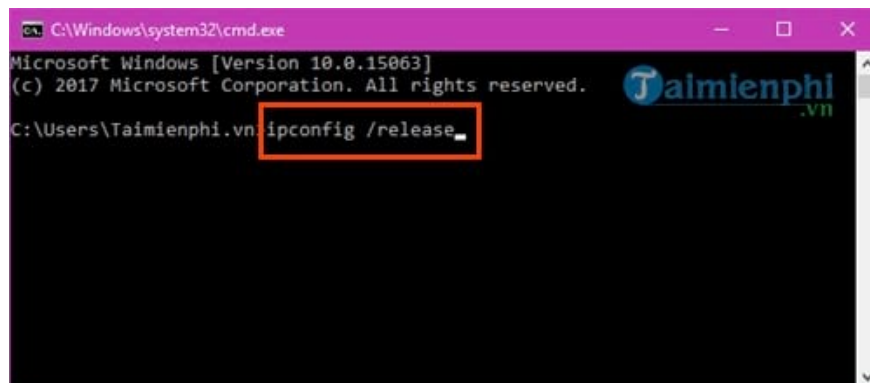
the network. To resolve the Limited Access error, you must re-issue the address. IP address with the following method.

Step 1: Press the **Windows + R** key combination then enter " **cmd** " and click **OK** to confirm access to Command Prompt.

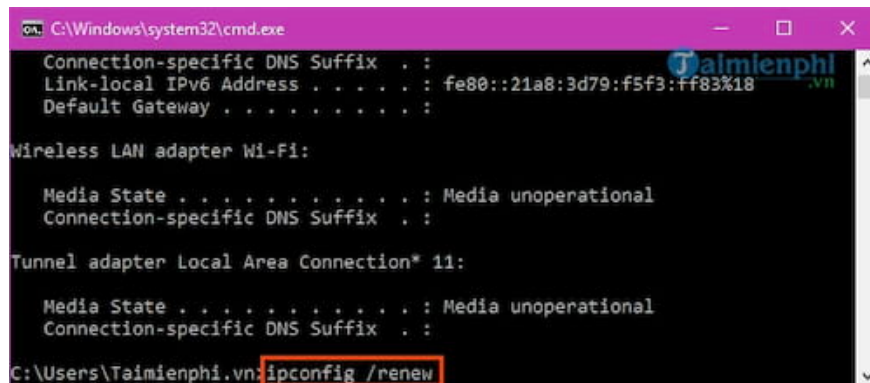


Step 2: In Command Prompt, type the following two commands one after another:

- **ipconfig /release**



- **ipconfig /renew**



After this operation, Wifi will automatically allocate you a new IP address and try accessing the network again to see if the Wifi cannot access the network error has disappeared.

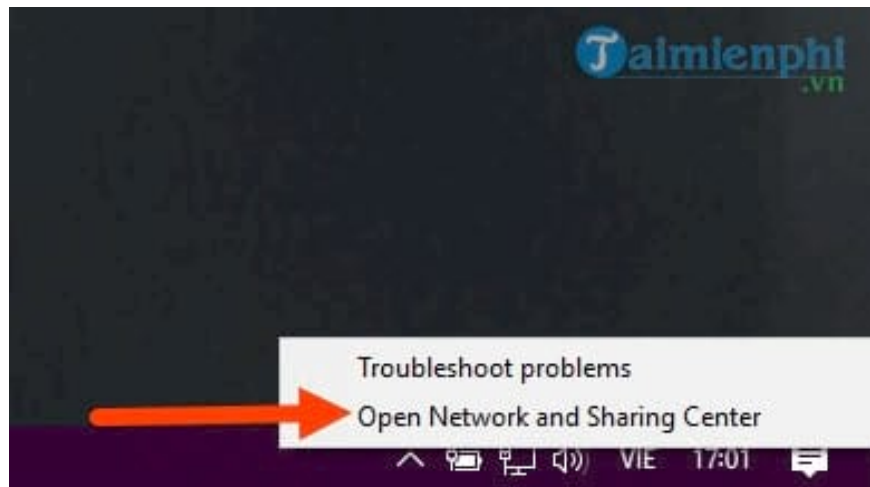
2. Restart the Modem

Sometimes the Wifi error of not being able to access the network is because your Modem has a problem during use. Before deciding to take it out to the store for repair, you should try **restarting the device or turning it off completely for 5 minutes. Then turn it back on**, then the Modem will reset the entire Wifi allocation system. If you're lucky, you'll be able to fix the Wifi error of not being able to access the network.

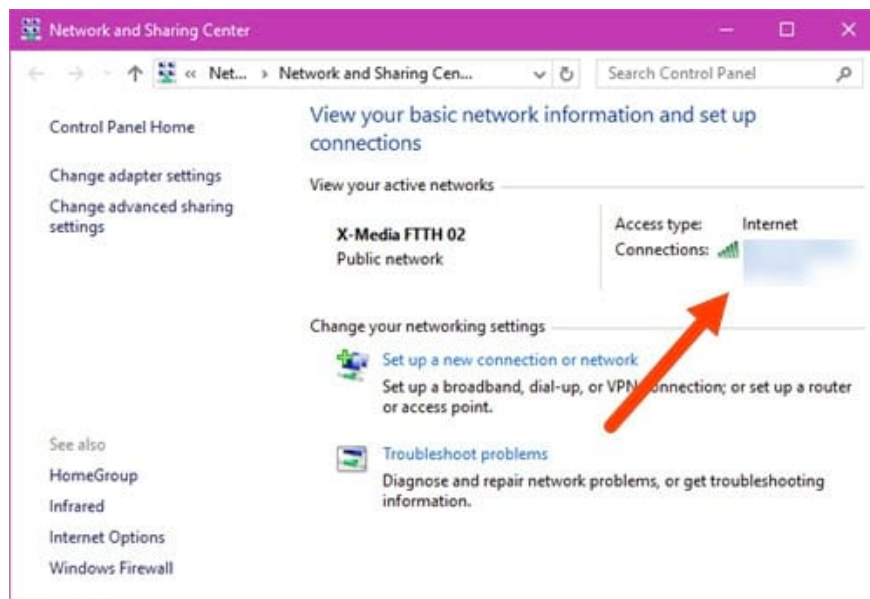
3. Set static IP

Many times Wifi cannot allocate an IP to you, possibly due to an error or because there are too many computers in the same system accessing it. If you do not divide it into separate parts, you will often encounter Wifi errors of not being able to access the network. And a simple way to help you fix the Wifi error of not being able to access the network is to set a static IP, check the IP for your computer and laptop to be able to access the network.

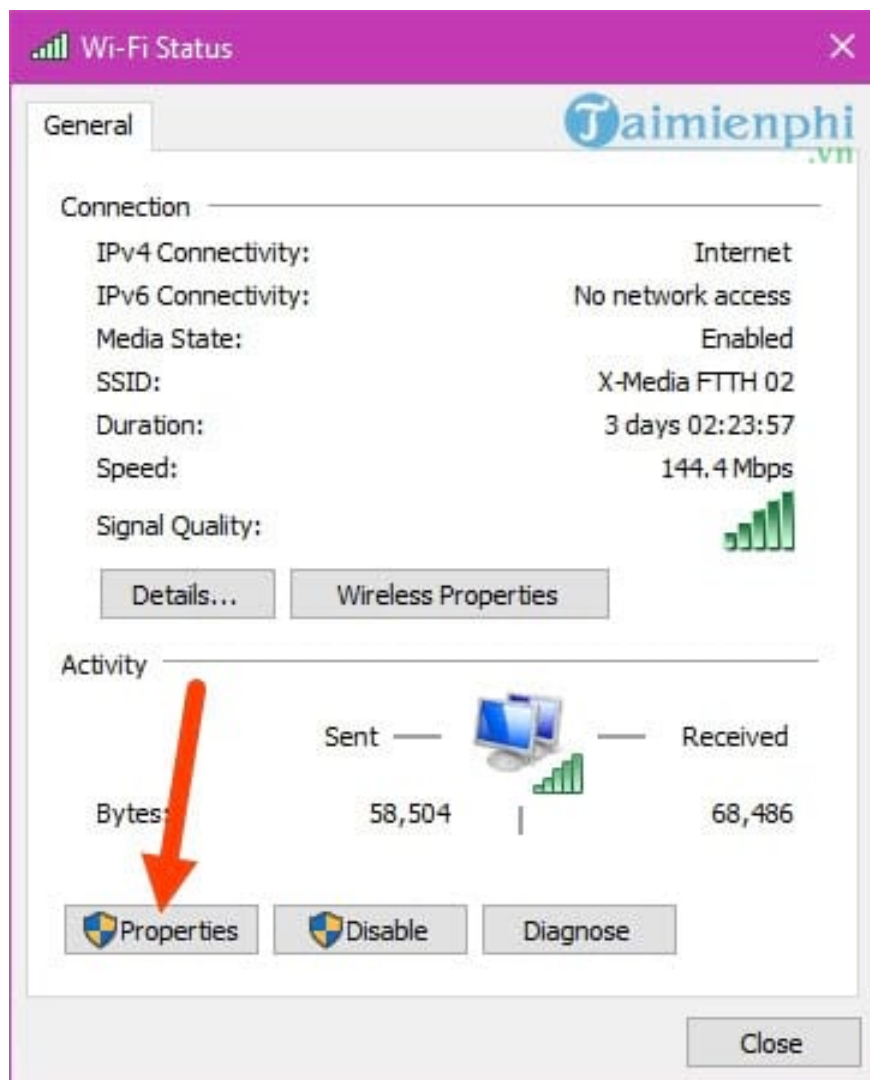
Step 1: The first thing you need to do is right-click on the icon on the Taskbar **then click Open Network and Sharing Center**



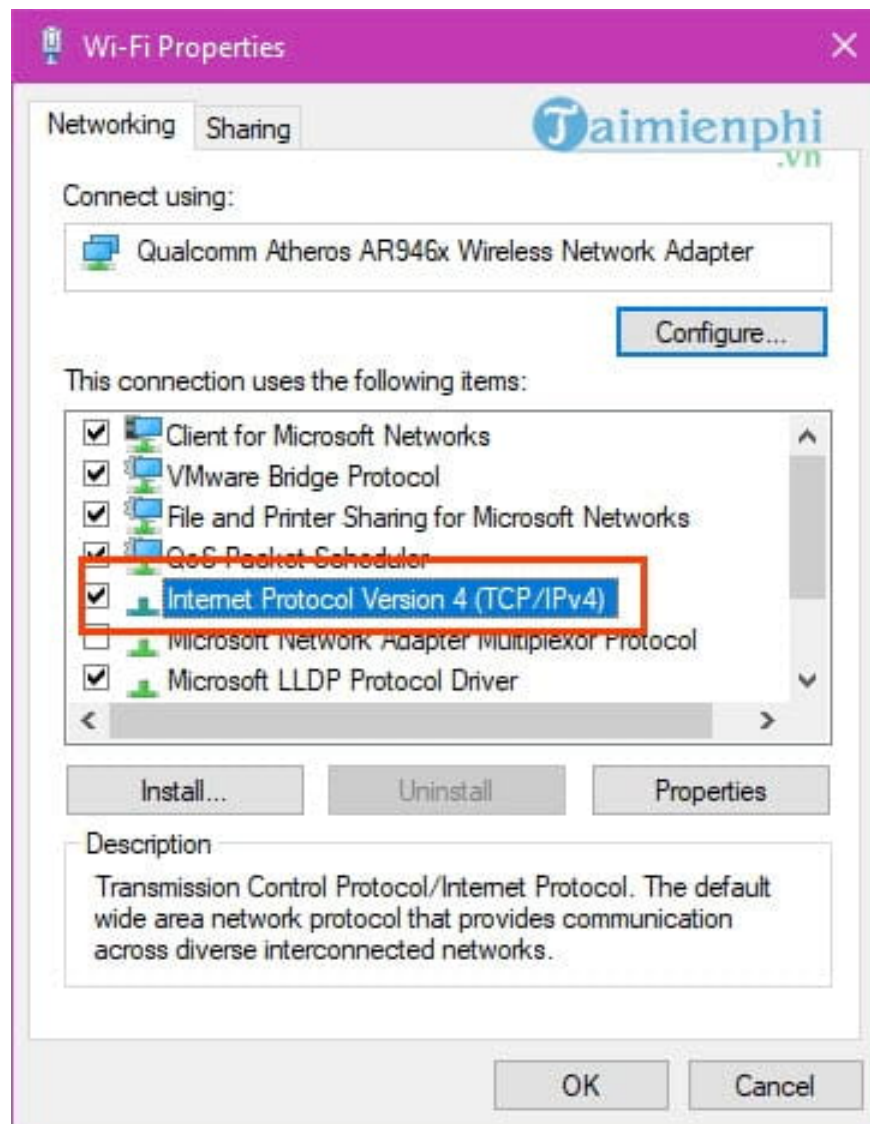
Step 2: Here you **click on the Wifi network you are accessing** to change the IP address.



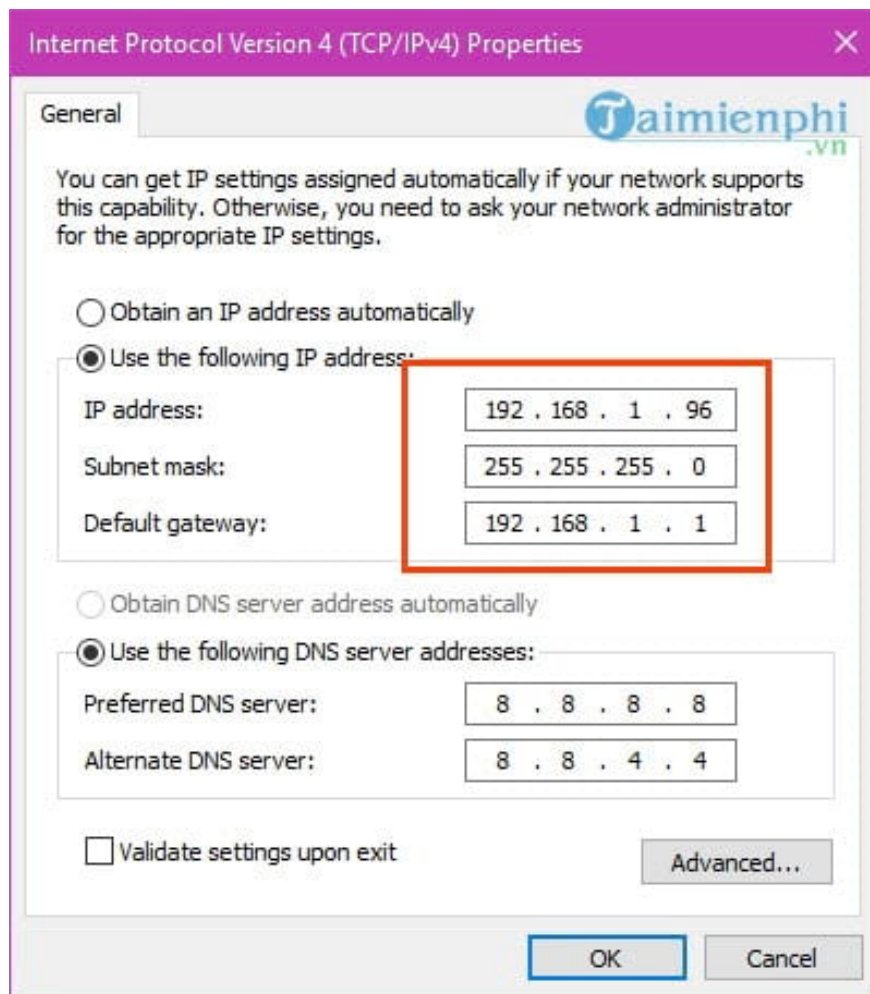
Step 3: Next click on **Properties** , which allows you to customize more parameters related to the network.



Step 4: The **Wifi Properties** interface appears, search for the line named **Internet Protocol Version 4** and double click on it.



Step 5: In this section there are 2 parts: **Change IP and change DNS**. In the change IP section, the first section is to pay attention to select **Use the Following IP addresses** and change the numbers as shown in the picture.



After editing is complete, just click OK to confirm. Just adjust the DNS line according to the image.

4. Reinstall Wifi Modem

Reinstalling the entire Wifi Modem is the final solution for you to fix the error of Wifi not being able to access the network, it could simply be due to a certain setting that is no longer suitable for your network, this is also a way to help you fix Wifi errors that cannot access the fastest network without having to find out the cause. To be able to reinstall the Wifi Modem, readers need to follow our instructions on how to reset the Modem. Before performing a modem reset, you need to note that you must remember the settings for the Modem. If not, ask the network staff, they are responsible for helping you do the above problem.

5. Modem failure

Looking around for solutions to fix the error of Wifi not being able to access the network but you don't realize that your device has a problem, maybe due to a hardware error that makes it impossible to broadcast the network to computers, laptops or other devices. around okay. In fact, Modem errors are very difficult to detect and you need to ask experts or repair staff from the network operator you registered to handle.

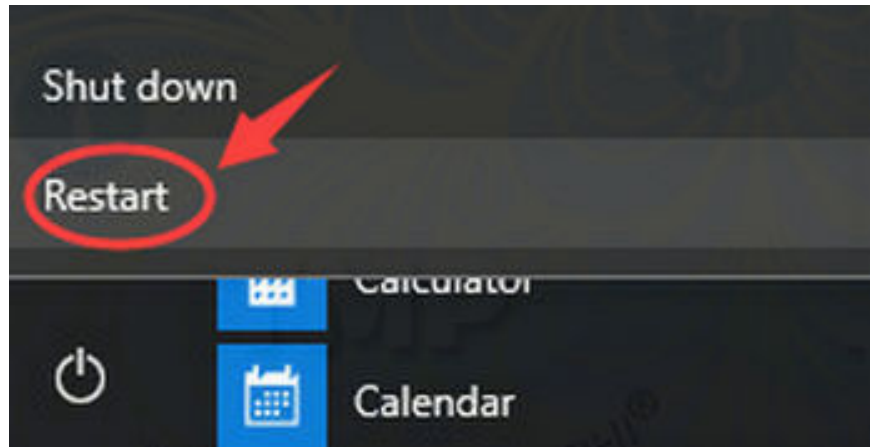
6. If unable to browse the web on devices

In case you cannot browse the web on the devices, even though there is still a connection, there is a Wifi icon, full signal. In this case, the cause of the error is most likely due to network hardware or network failure. Follow the steps below to fix the error.

Step 1: Remove the power cord and battery (if applicable) from your router.

Step 2: Wait about 60 seconds, then plug the router back in.

Step 3: Click the Start button and then select **Restart** .



Step 4: After the computer has finished booting, access the following path: click the **Start** button => **Settings** => **Network & Internet** > **Wifi** (in the left pane of the table). Select your network connection then click **Connect** .



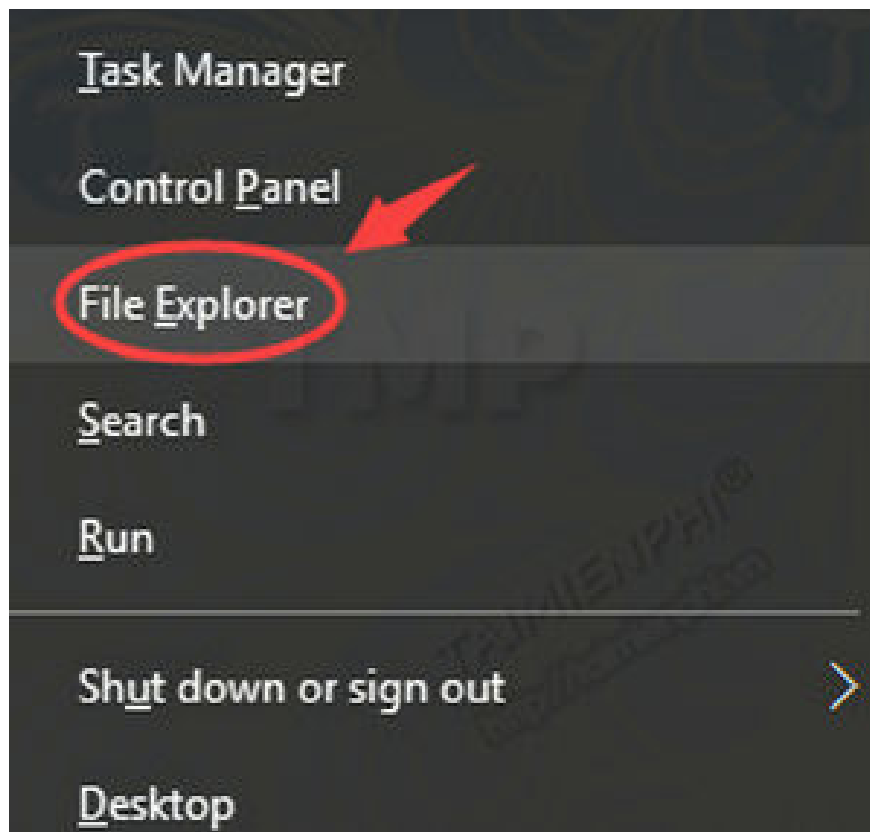
If the error still occurs, try contacting your network provider or router manufacturer for support.

7. Can browse the web on other devices, but not on laptops

7.1. Delete temporary files:

Follow the steps below to delete temporary files and fix wifi error of not being able to access the network even though still connected, full signal:

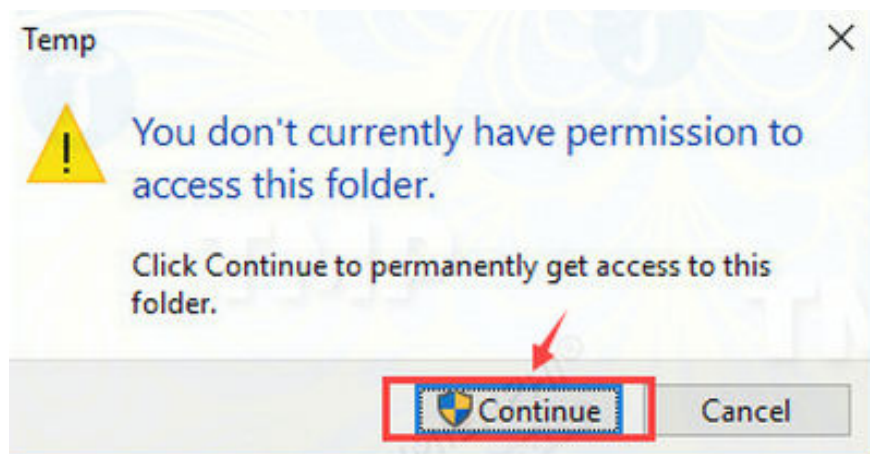
Step 1: Press **Windows + X** to open the Winx menu, then Click to select File Explorer.



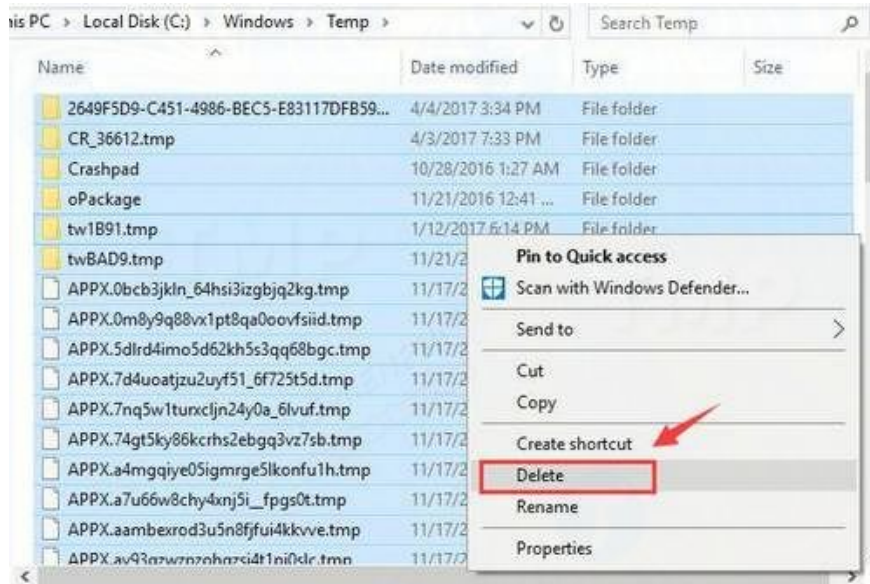
Step 2: In the address bar, enter **C:Windows\temp** there and press **Enter** .



Step 3: If asked for Admin rights, click **Continue** to continue.



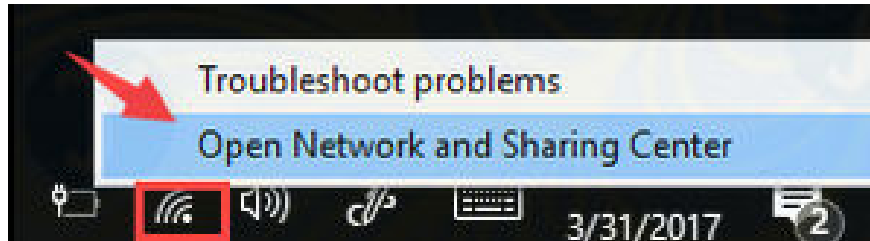
Step 4: The next window will display a series of temporary files. All you need to do is press Ctrl + A to select all files, right-click on them and select Delete.



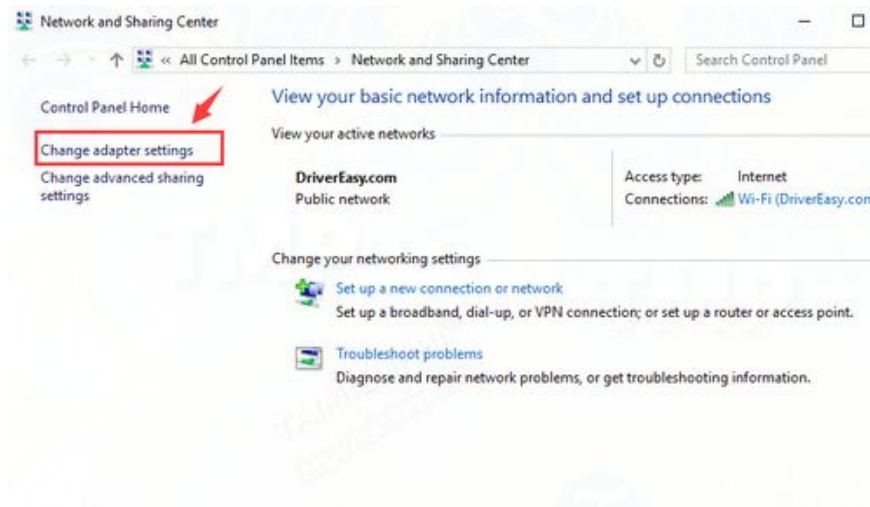
Step 5: Finally, try reconnecting to the network to see if the error persists.

7.2. Reset DNS:

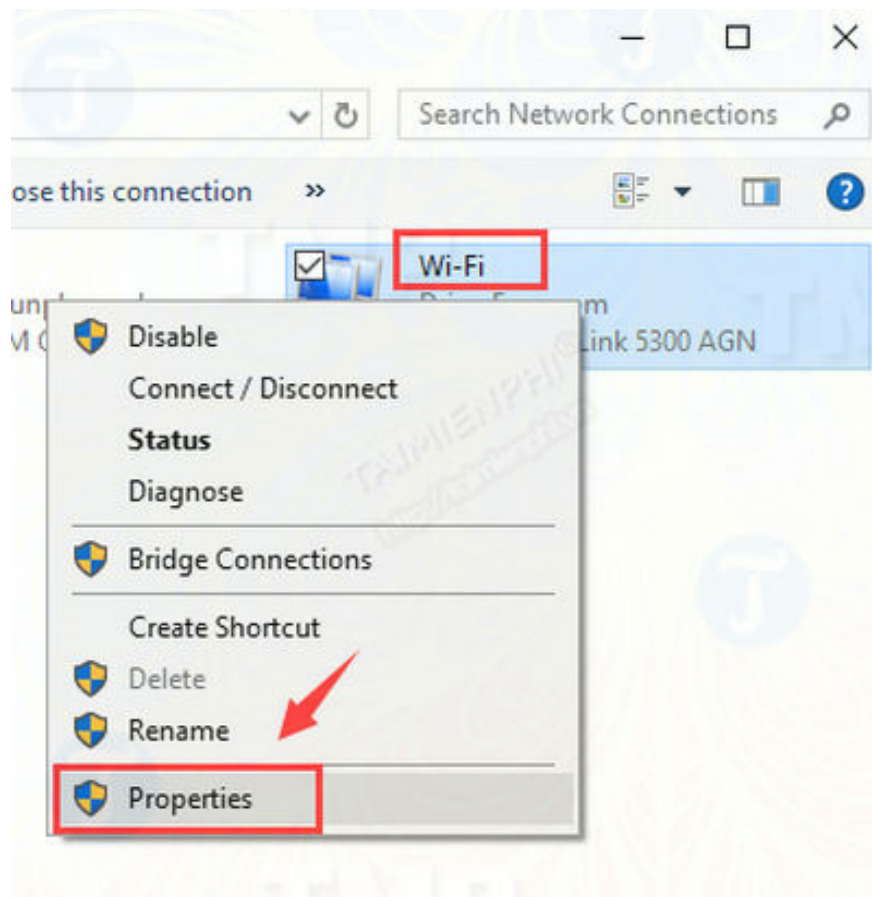
Step 1: Right-click the network icon in the bottom right corner of the screen, select **Open Network and Sharing Center**.



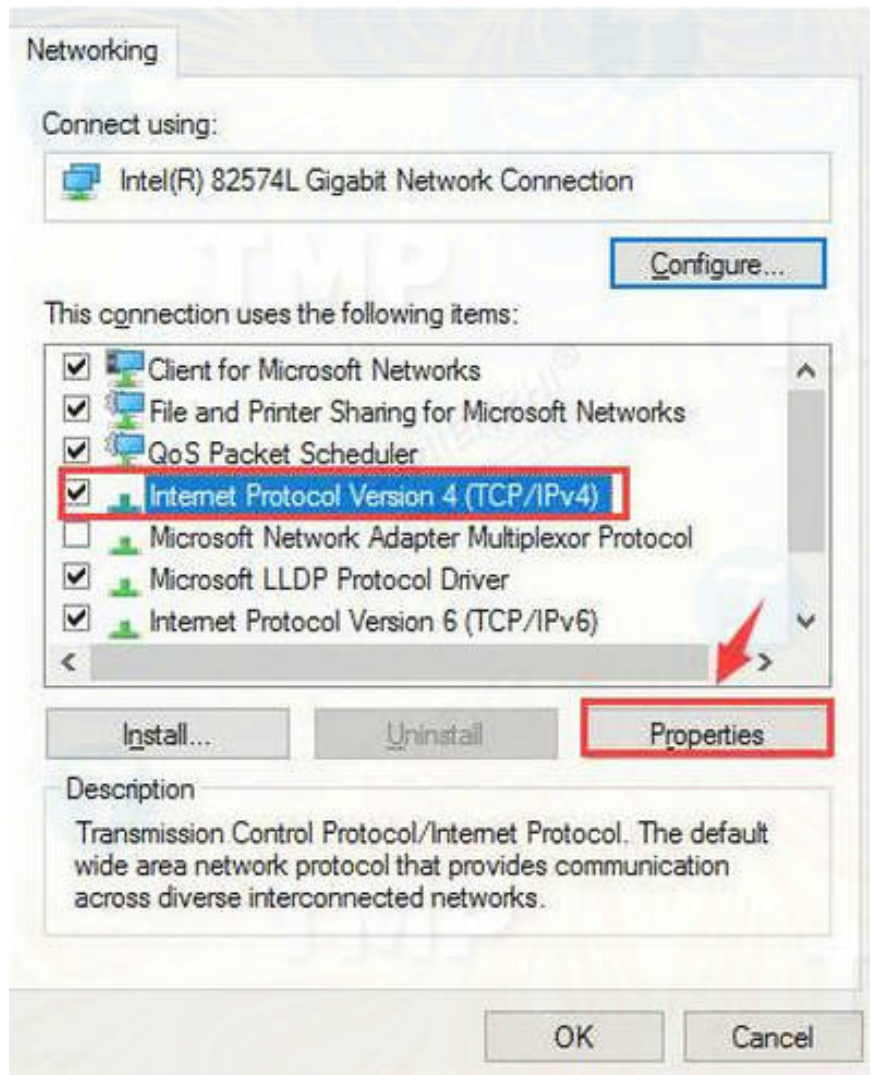
Step 2: Next click **Change adapter settings**.



Step 3: Right-click on your Wifi card and then click **Properties** .



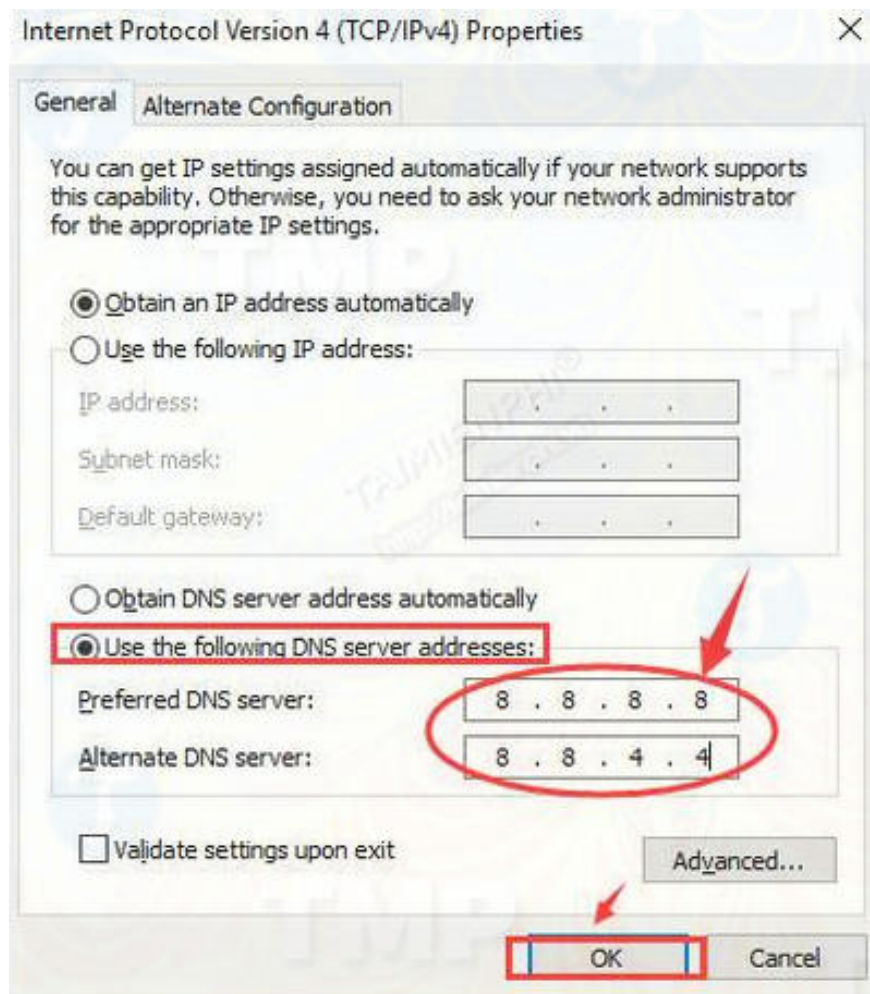
Step 4: Select **Internet Protocol Version 4 (TCP/IPv4)** and then click **Properties** .



Step 5: Click **Obtain an IP address automatically** .



Step 6: If you cannot connect to the Internet, select the **Use the following DNS server addresses** option and fill in the DNS addresses as shown below:

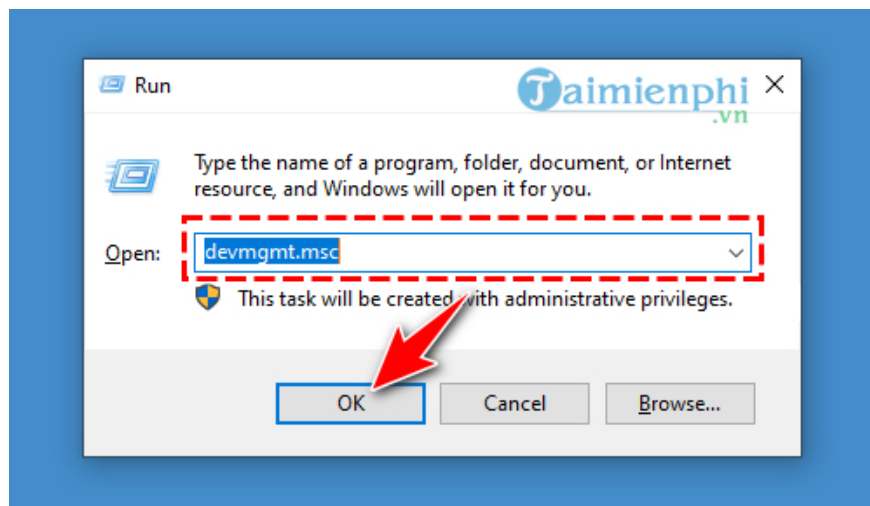


Finally click **OK** and check if the error still exists or not.

8. Update network card driver

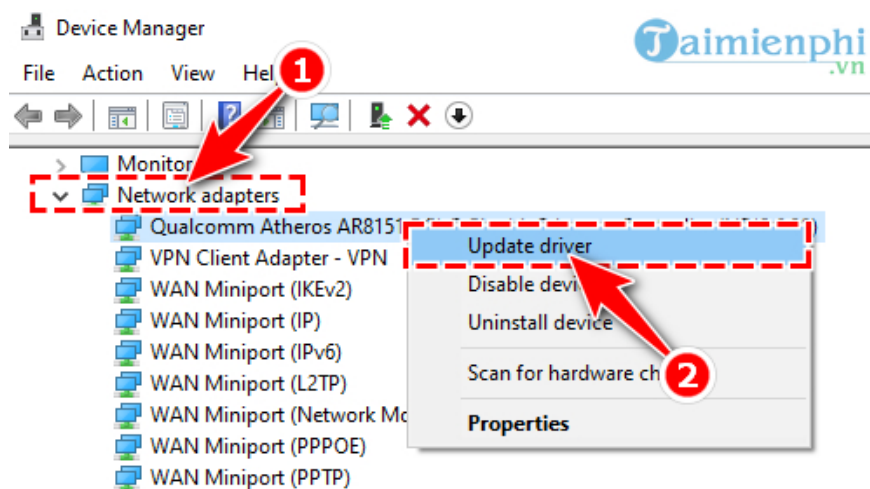
If all of the above methods are not available, the final solution TipsMake recommends is to update the network card driver to fix the wifi error of not being able to access the network even though it is still connected and full signal.

Step 1: Press **Windows + R** to open the Run command window, then enter **devmgmt.msc** there and press **Enter** or click **OK** to open Device Manager.

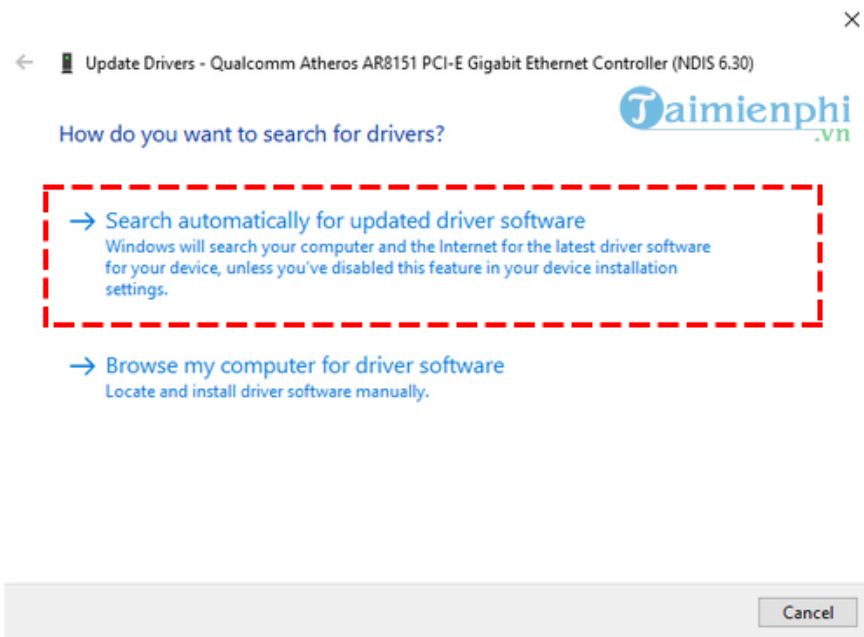


Step 2: On the **Device Manager** window , find and expand the **Network adapters** section .

Step 3: Right-click your network card and select **Update Driver Software...**



Step 4: Select **Search automatically for updated driver software** .



Step 5: Wait until Windows finishes updating your network card driver.

Step 6: Perform the same steps with the remaining network cards.

With the above ways to fix the error of Wifi not being able to access the network, you will have more options to solve your situation and we should also check for other problems such as the Modem, the network cable or the network operator itself. provided to know the exact cause to fix the error more easily. When mentioning Wifi problems, it is impossible not to mention the error of changing the Wifi password. It is not as troublesome as the Wifi cannot access the network error in this article, but if you do not know how to handle it, you will encounter quite a few problems. difficult, so please immediately refer to the article on how to fix Wifi password change errors to see if there are any common cases.

You finished reading the article "**How to fix wifi error of not being able to access the network and the causes**" edited by the [TipsMake](#) team. We hope this article has provided you with many useful tech tips and tricks. You can search for similar articles on tips and guides. Thank you for reading and for following us regularly.