

# How to fix Touchpad error on Windows 10 does not work

On Windows 10 laptop, recently, quite a lot of users reflect that the Touchpad is not working, and they do not know how to fix the error.

**Touchpad** is also called a **touchpad on a laptop** . With laptops and netbooks, the Touchpad is merely a replacement for computer mice. On Windows 10 laptop, recently, quite a lot of users reflect that the Touchpad is not working, and they do not know how to fix the error. In the following article, Network Administrator will guide you through simple ways to fix this error.

**Note** : You need to use an external mouse or touch screen to perform the following corrective measures.

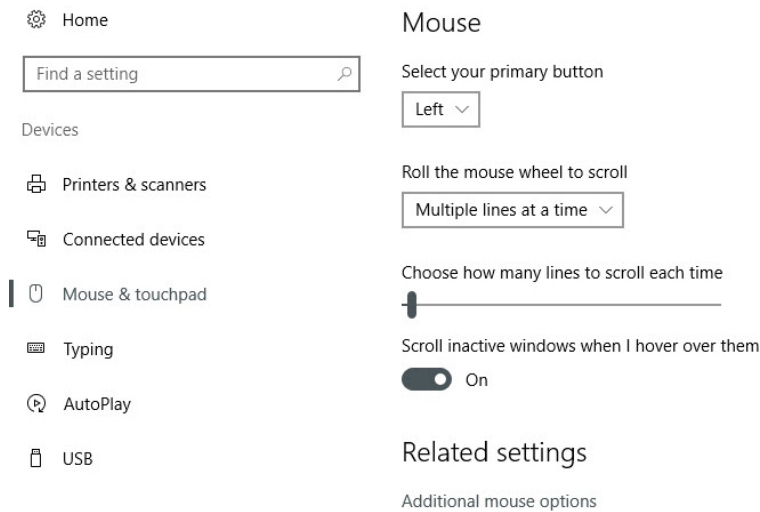
## How to fix Touchpad error on Windows 10 does not work

1. 1. Make sure that the Touchpad on your system is enabled
2. 2. Is the touchpad disabled in the BIOS?
3. 3. Re-enable Touchpad with the 'Fn' key
4. 4. Uninstall other mouse drivers
5. 5. Update or revert to the old version of the Touchpad driver
6. 6. Touchpad activation in Mouse Properties
7. 7. Disable Tablet PC Input Service

### 1. Make sure that the Touchpad on your system is enabled

On many laptops, the touchpad is turned **OFF** . So you need to check if the touchpad on your laptop is activated. If Touchpad is not activated, then reactivate.

1. Open the **Settings** app on your Windows 10 laptop, then search for **Mouse & touchpad settings** .
2. Make sure the touchpad is displayed on this window.
3. If not, go back and install the driver again.



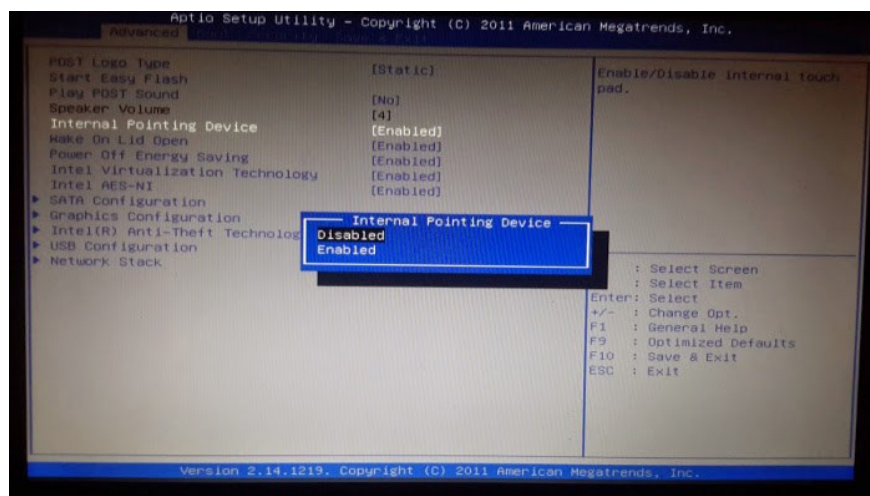
1. Click **Advanced mouse options** to open the Main mouse and touchpad settings window.
2. Depending on your Touchpad, this window may be different.
3. After finding the Touchpad settings, just switch the Touchpad status to **ON**.

## 2. Is the touchpad disabled in the BIOS?

There are some cases where the reasons for this are unknown but your laptop Touchpad may be disabled in the motherboard BIOS (this may happen after updating the firmware).

To check, access the BIOS by repeatedly pressing the **Delete** or **F2** key when the computer boots. The button to be pressed may vary depending on the model, and you can refer to the article [How to access the BIOS on different computers](#)).

Similarly, the BIOS for different motherboards also has a different layout, but your goal is to find the option '**Internal Pointing Device**' or similar, and make sure this option is enabled ( It may be in the **Advanced** title. After enabling this option, select **Save Changes and Exit** .



## 3. Re-enable Touchpad with the 'Fn' key

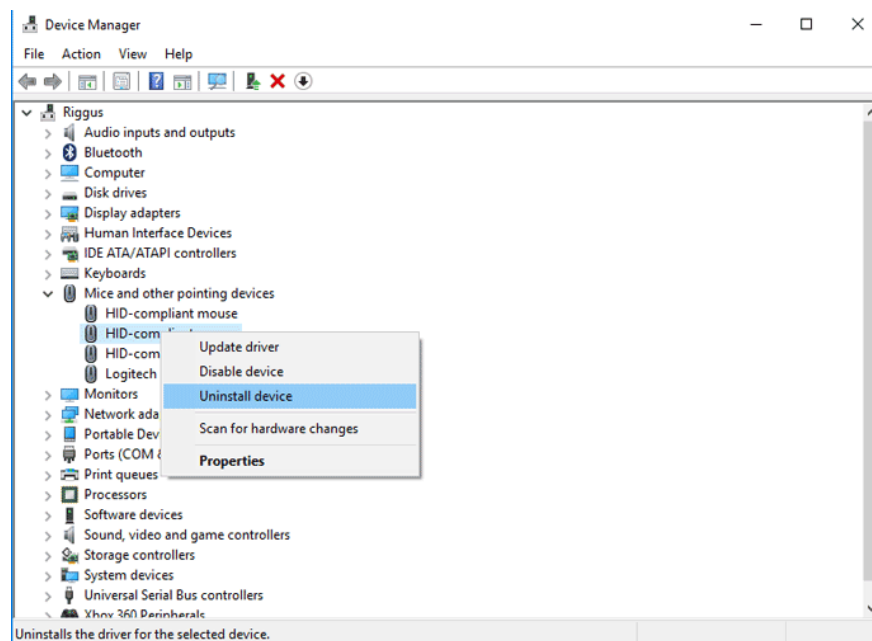
On some laptop keyboards there are shortcuts to enable / disable the fast touch keyboard, usually the Fn + key with a certain F key, or just press the F key. You can try pressing them to turn on, turn off the keyboard. touch on your laptop, for example:

1. Acer: Fn + F7
2. Asus: Fn + F9
3. Dell: FN + F3
4. Lenovo: Fn + F6 or Fn + F8 (depending on the model)

With some HP laptops, you only need to quickly touch the touch mouse sensor twice, if the light is on, the mouse has been activated.

## 4. Uninstall other mouse drivers

Did you plug the entire mouse into the laptop and never uninstall its driver? If so, it is possible that their drivers affect Touchpad. Some mouse drivers even disable the Touchpad automatically. To uninstall this driver, go to **Device Manager** , click the arrow next to ' **Mice and other pointing devices** ', then right-click and uninstall the mouse one by one until the Touchpad works again.

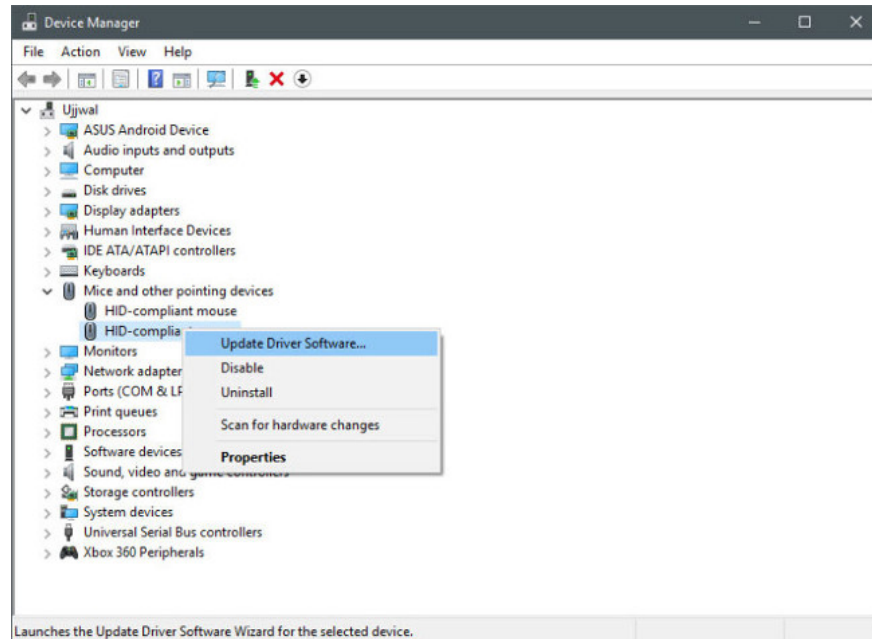


## 5. Update or revert to the old version of the Touchpad driver

Windows automatically updates all drivers on the system. However, if you disable the automatic update feature, it is likely that it caused some errors on the system, including the Touchpad error. Therefore, to fix the error, you must install the driver manually.

1. Open Device Manager on your computer by pressing the **Windows + R** key combination to open the Run window.
2. On the Run window, type **devmgmt.msc** into it and press **Enter** .

3. The Device Manager window will now appear on the screen.
4. Here you find and expand the **Mice and other pointing devices section**.
5. Right-click Touchpad and click **Update device drivers ....**

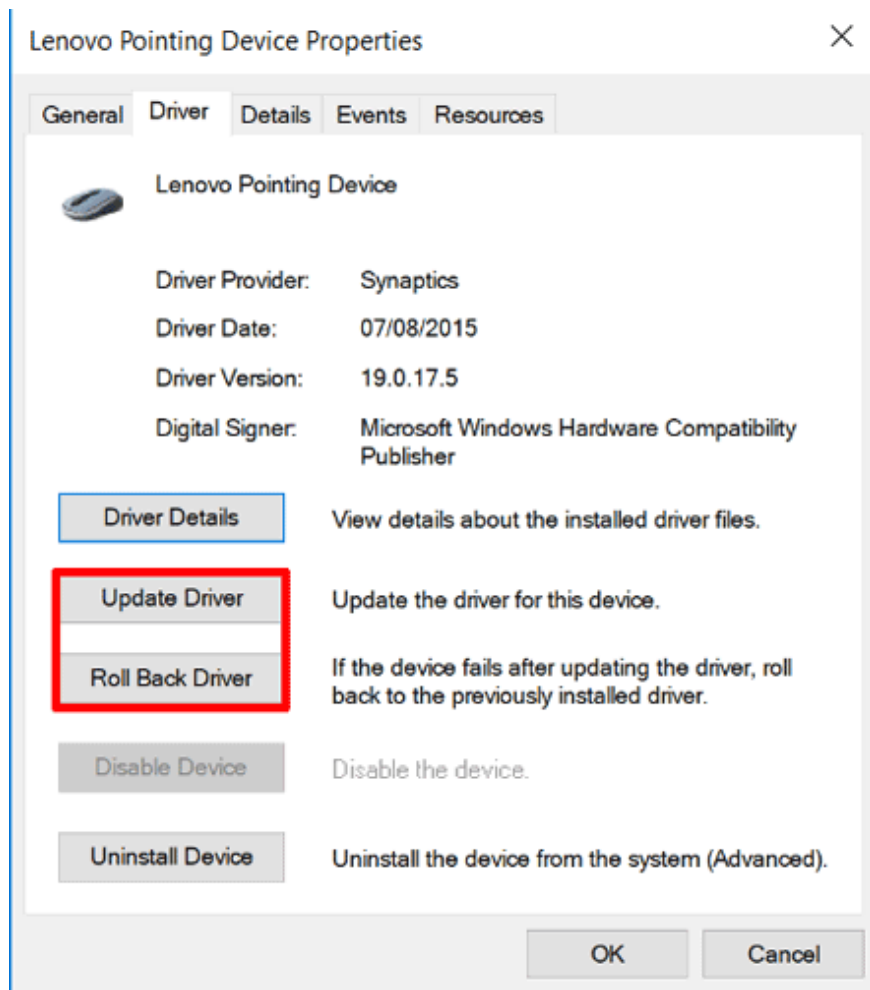


1. Next select **Search automatically for updated driver software .**
2. Your Windows computer will search and update drivers.

If you do not want to update manually, you can use one of the driver update software below to update automatically:

1. Download drivers, update drivers with just one click with Driver Booster Free
2. How to use Driver Talent for free driver updates
3. Automatically update drivers for Windows with Snappy Driver Installer
4. How to automatically update drivers on Windows using SnailDriver

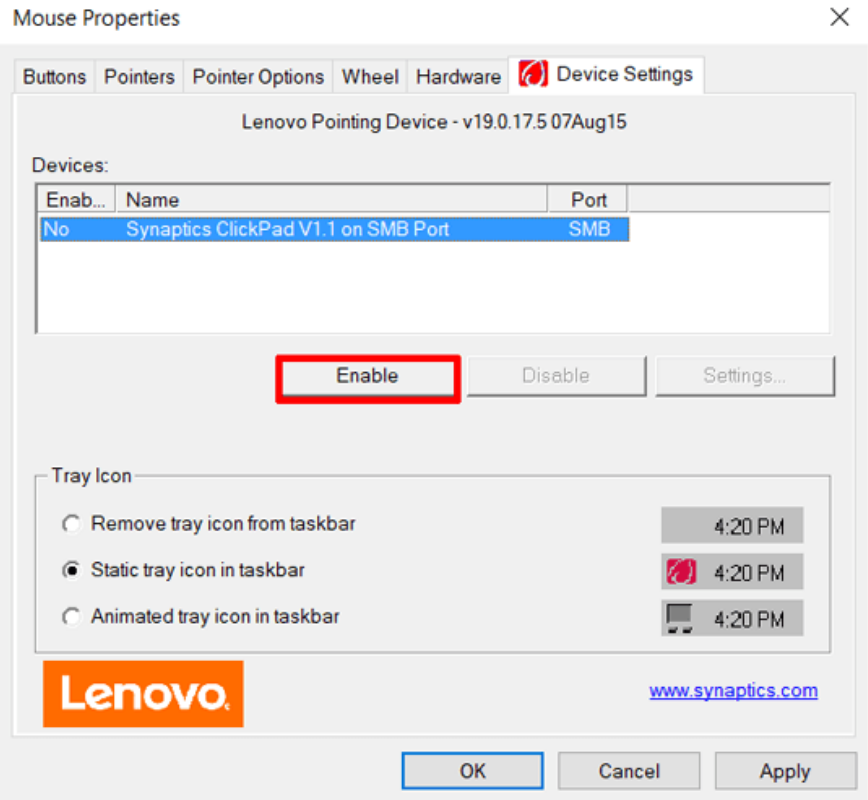
A lot of people report that the Touchpad doesn't work after updating to Windows 10, which means the Windows 10 driver for the Touchpad may be faulty. In Device Manager, right-click on Touchpad, then click on "**Properties**" and **Roll Back Driver** to see if the previous version of the driver fixes the problem.



## 6. Touchpad activation in Mouse Properties

In many cases, Device Manager cannot handle enabling and disabling Touchpad. If Touchpad is disabled, you need to access Mouse properties to reactivate.

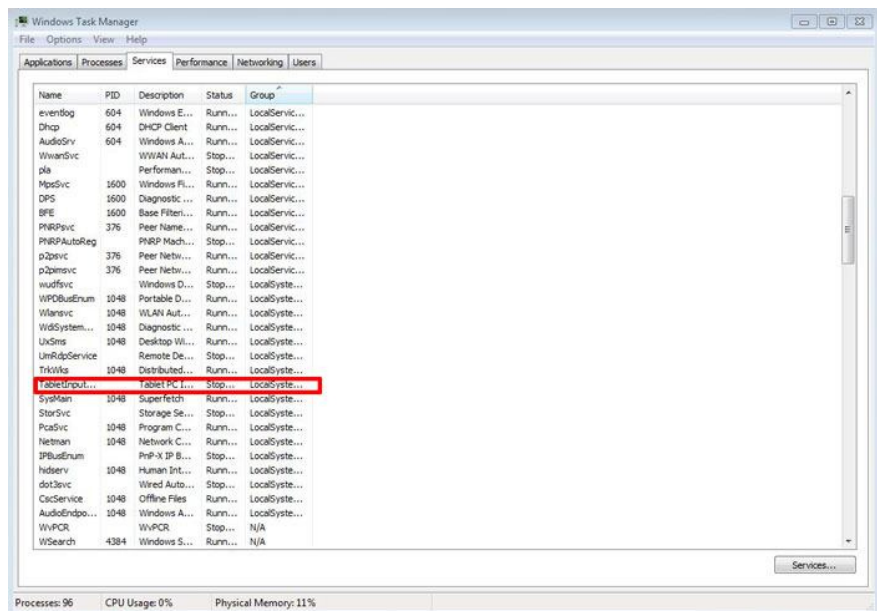
Type **mouse** in the Windows search bar and go to **Mouse settings** . Here, click ' **Additional mouse options** ' then in the new window access the **Device Settings** tab, **Touchpad** or any other similar tab. Find your Touchpad in the list, select it and click **Enable** .



## 7. Disable Tablet PC Input Service

If your Windows 10 laptop is a hybrid device and has a touch screen, then Tablet PC Input Service can control the touchpad function causing a touchpad problem.

To turn off the Tablet Input Service, press **Win + R**, then enter **services.msc** into the box. In the service list, scroll down until you find ' **TabletInputService** ' or ' **Tablet PC Input Service** ', right-click and then turn it off.



Refer to some of the following articles:

1. Quick fix computer error Windows 10/8/7 crashes, Safe Mode can not be escaped
1. Remove root malware (malware) on Windows 10 computers
1. Configure the "brain damage" PIN to log on to Windows 10

Good luck!

You finished reading the article "**How to fix Touchpad error on Windows 10 does not work**" edited by the [TipsMake](#) team. We hope this article has provided you with many useful tech tips and tricks. You can search for similar articles on tips and guides. Thank you for reading and for following us regularly.