

How to fix the yellow exclamation mark error on a computer network

A yellow exclamation mark indicates that your computer cannot access the internet. This is a common error caused by various factors, such as IP address conflicts, outdated network equipment, or loose connections. Please refer to the steps below to resolve the issue.

The exclamation mark network error can have many causes, the main ones being: duplicate IP addresses, outdated network equipment, loose network cables, etc.

Here's how to fix the yellow exclamation mark network error on your computer.

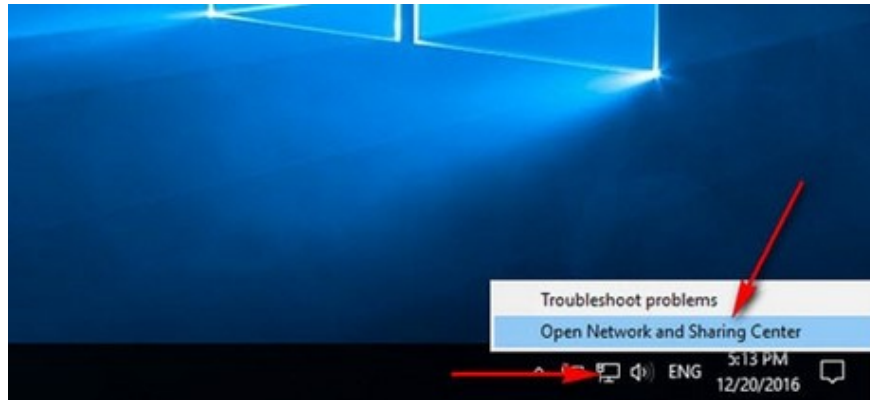
Method 1: Reconnect your network device.

Try unplugging and plugging the network cable back in. If the yellow light on the connector is flashing, you've connected it correctly. If the yellow exclamation mark is still visible, try turning the modem on and off again to reconnect to your internet provider.

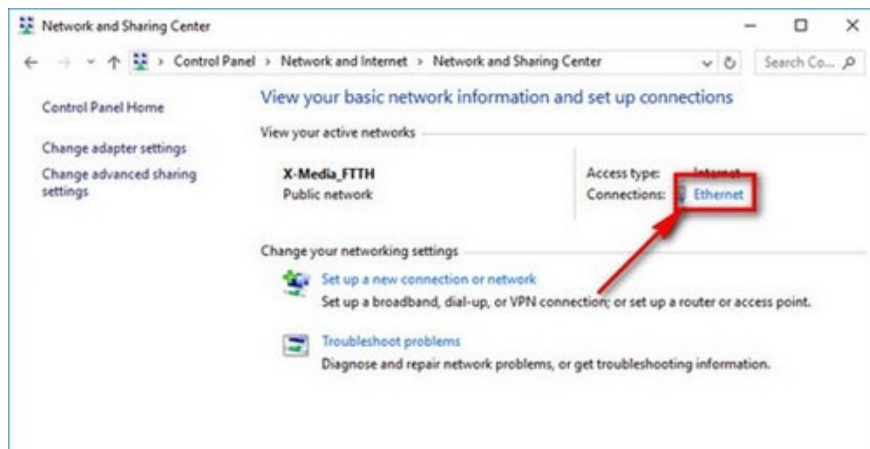


Method 2: Setting up IP address and DNS system

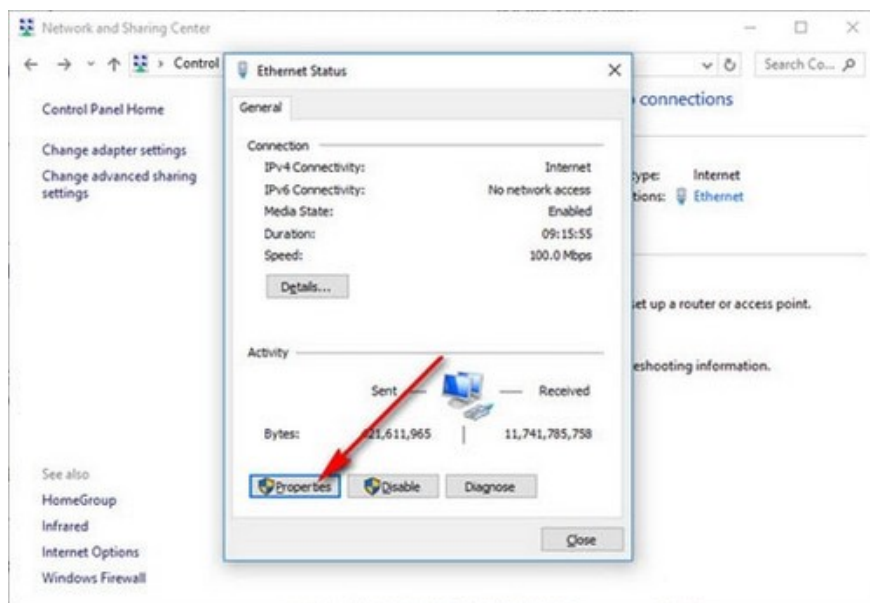
Step 1: Right-click on the network icon and select **Open Network and Sharing Center** , or open **Control Panel -> Network and Sharing Center** .



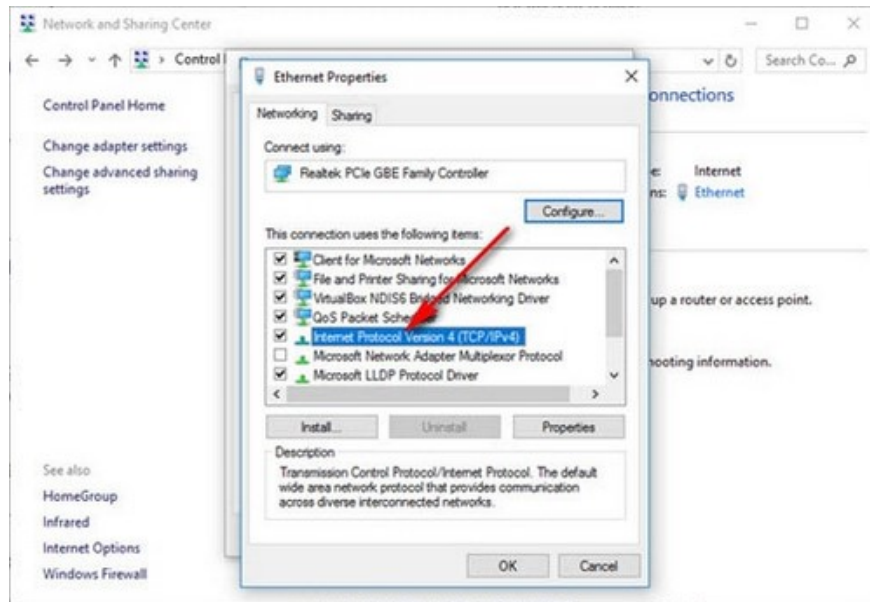
Step 2: Left-click on the network you are currently connected to.



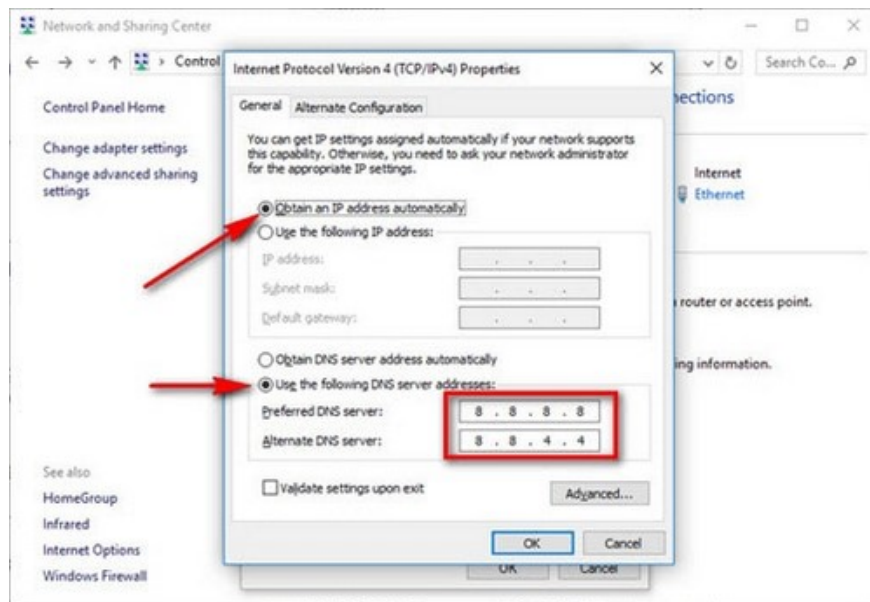
Step 3: Select **Properties**.



Step 4: Scroll down, find, and double-click on the line "**Internet Protocol Version 4 (TCP/IPv4)**".



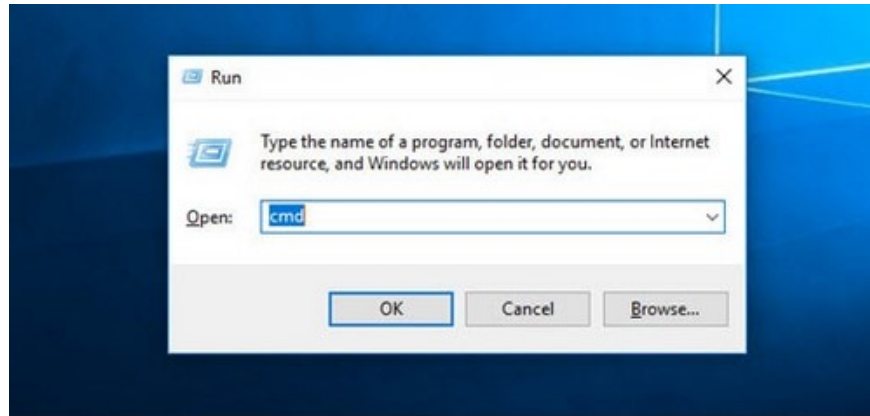
Step 5: In the **Internet Protocol Version 4 (TCP/IPv4) Properties** window, check the **"Obtain an IP address automatically"** option to have the system automatically assign an IP address. Then, select **"Use the following DNS server address"** and add Google's DNS address as shown below.



Step 6: If the above two methods didn't work, try method 3.

Method 3: Reset IP address using Command Prompt

Step 1: Press the **Windows + R** key combination to open the **Run** dialog box. Then type **cmd** and press **Enter**.



Step 2: In the Command Prompt window, type the following two lines in sequence and press Enter for each line.

```
Ipconfig /release  
Ipconfig /renew
```

This method can resolve most IP congestion issues that lead to network exclamation marks. If the problem persists, the network equipment (modem, router, etc.) may be faulty or there may be a problem with the connection. Please call your network provider for support.

A yellow exclamation mark on your computer network is one of many reasons why your computer might not be able to connect to the internet. Other possible causes include missing network drivers, damaged cables, etc. Most of these issues can be resolved, so you don't need to worry too much if your computer is experiencing problems.

You finished reading the article "**How to fix the yellow exclamation mark error on a computer network**" edited by the [TipsMake](#) team. We hope this article has provided you with many useful tech tips and tricks. You can search for similar articles on tips and guides. Thank you for reading and for following us regularly.