

How to fix 'The Parameter Is Incorrect' error in Windows 10

Sometimes while connecting an external hard drive, SD card, USB or other storage media to your Windows PC, you may experience The parameter is incorrect error.

If not fixed in time, the error will cause you to lose important files and data. Here's exactly what to do when you notice this problem on any external hard drive.

What does 'The parameter is incorrect' error mean?

Whenever you connect an external hard drive to your PC, you will be able to view your files in File Explorer. For some reason, the external hard drive may fail (temporarily) and display the error message: *'Location Drive is not accessible. The parameter is incorrect'*.



It is also known as error 0x80070057. There can be many reasons for this error - from the USB port to bad sectors in the drive or needing driver updates. The solutions also vary, from simple command line error correction to using official data recovery software.

How to fix 'The Parameter Is Incorrect' error in Windows 10

1. Perform the Quick Scan test

Initially, check to see if the system has malware. Go to **Virus & Threat Protection** from the Start menu and do a quick **scan** for **Quick scan** for any threats. If any malware is found, disconnect the external device immediately as it could be the source of the problem. In most cases, Windows 10 will warn you in advance of such malware, as it will detect it as soon as it reaches the system.



2. Run Chkdsk to fix hard drive errors

If you don't find any malware, then the external hard drive will be checked for data integrity. Windows Chkdsk is the most useful utility for detecting this. Open a command line window in admin mode from the Start menu. Enter the following information based on the name automatically assigned to the external hard drive:

```
chkdsk Drive name: /f/x/r
```

The system will run a full disk scan and fix any data integrity problems. It examines basic file structure, security descriptor, USN journaling, and bad clusters in file data. Restart your computer after the scan has finished and you should no longer have any problems connecting the external hard drive.

3. Run sfc / scannow on the external hard drive

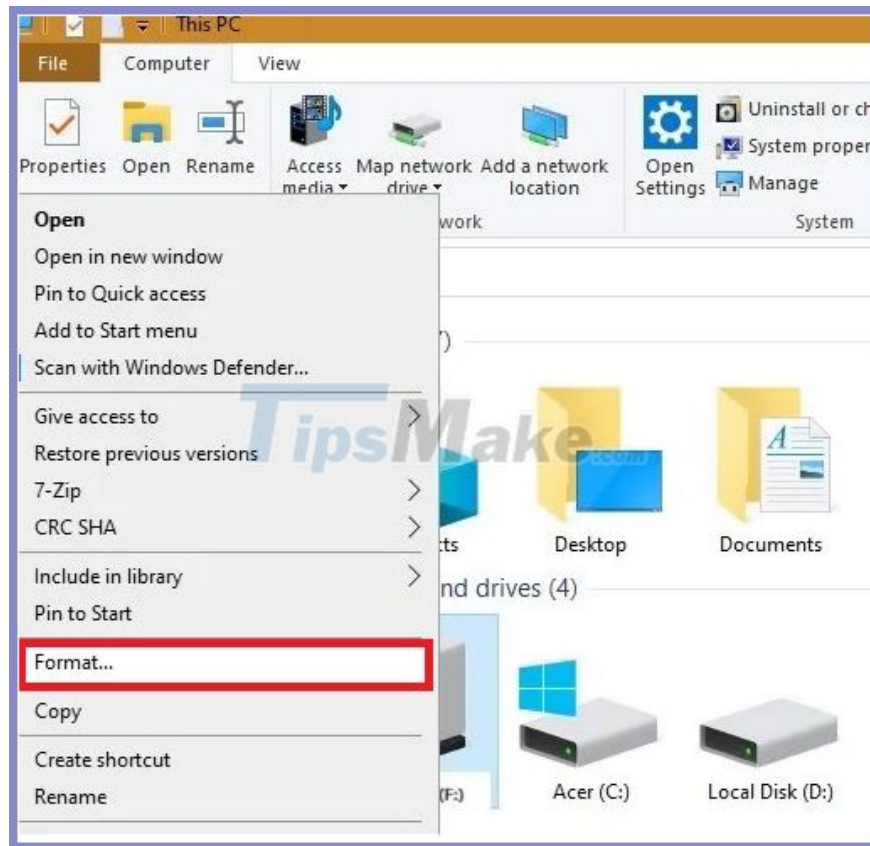
Sfc / scannow is one of the best Windows built-in tools to repair corrupt system files. But did you know it can also be used to repair corrupt files in external hard drive? To access this fix setting, open a command line window in Admin mode and change a little bit of the command as shown below:

```
sfc/scannow/offbootdir=Drive Name: /offwindir=Drive name:windows
```

The target drive is now selected to check the file system. You will now see a menu of options. Select the first option: **sfc / scannow** to complete the drive scan. Be patient, as this process can be time consuming and go through 4 or 5 stages based on the number of entries in your external hard drive. For smaller USB drives and SD cards, this won't take long. The file system checker will automatically detect and correct errors.

4. Format the external hard drive

If none of the above methods worked, the external hard drive might have encountered a problem. This can only be fixed by reformatting. Go to the main menu '**This PC**' on your Windows 10 PC, select your external hard drive and click **Format**.

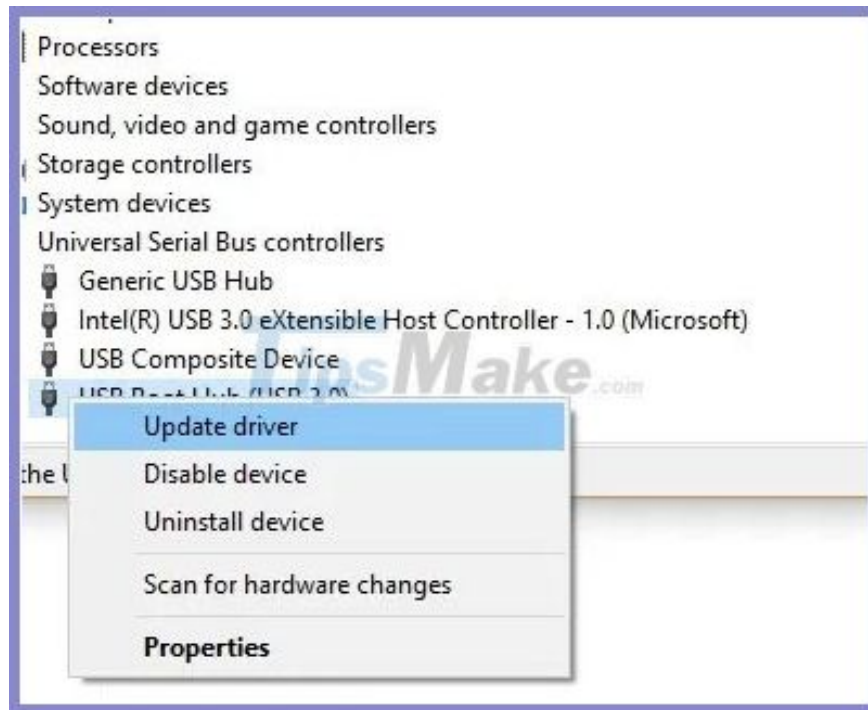


Depending on whether the file system on the drive is 'NTFS' or 'FAT' (you can find it in the Chkdsk utility discussed above), you need to make a choice. If you want to create a new volume label, you can try it, as it will ensure a new approach to the drive. Note that formatting will erase all data on the drive.

5. Update USB drivers and drives

If the error is on the drive or USB port, you can check to see if any driver update is needed. (Usually you will get a warning from Windows first.) If not, go to '**Device Manager**' from the Start menu.

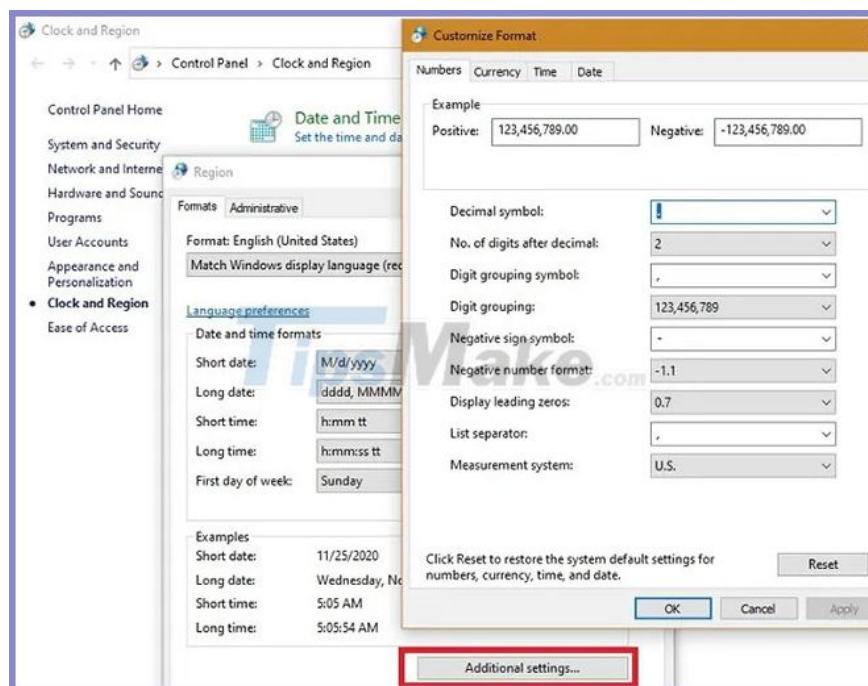
Now, select both the drive and the USB drive, and then right-click to update the driver.



If a new driver is found online, it will automatically be added to your system. You can restart the machine to see if the parameter error is gone.

6. Make sure the decimal symbol is in the date and time settings

Sometimes a syntax problem in a date-time format can also cause parameter errors. Go to **Control Panel > Clock and Region** and select **Regional Date and Time format > Additional settings**. Here, you need to make sure that the 'decimal notation' '.' being used.



You finished reading the article "**How to fix 'The Parameter Is Incorrect' error in Windows 10**" edited by the [TipsMake](#) team. We hope this article has provided you with many useful tech tips and tricks. You can search for similar articles on tips and guides. Thank you for reading and for following us regularly.
