

How to fix the NVIDIA graphics card error is not displayed in Device Manager

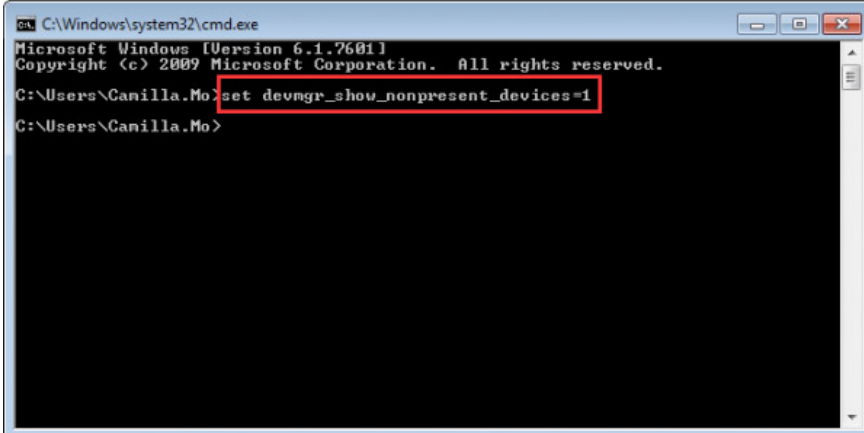
If you do not see the NVIDIA graphics card listed in Device Manager device manager, you can say that the graphics card was detected by Windows incorrectly. The common error you encounter is that it is not possible to install drivers for NVIDIA graphics cards. This problem can be caused by many reasons. In this article, you will learn the best methods for troubleshooting. With the following instructions, your problem will be resolved immediately.

If you do not see the NVIDIA graphics card listed in Device Manager device manager, you can say that the graphics card was detected by Windows incorrectly. The common error you encounter is that it is not possible to install drivers for NVIDIA graphics cards. This problem can be caused by many reasons. In this article, you will learn the best methods for troubleshooting. With the following instructions, your problem will be resolved immediately.

Method 1: Display hidden devices and reinstall graphics drivers

This method is particularly useful for troubleshooting problems caused by the leftover driver after replacing the video card. Follow these steps:

1. Open **Command Prompt** .
2. In Command Prompt, type **devmgr_show_nonpresent_devices = 1** , then press **Enter** .



```
C:\Windows\system32\cmd.exe
Microsoft Windows [Version 6.1.7601]
Copyright (c) 2009 Microsoft Corporation. All rights reserved.

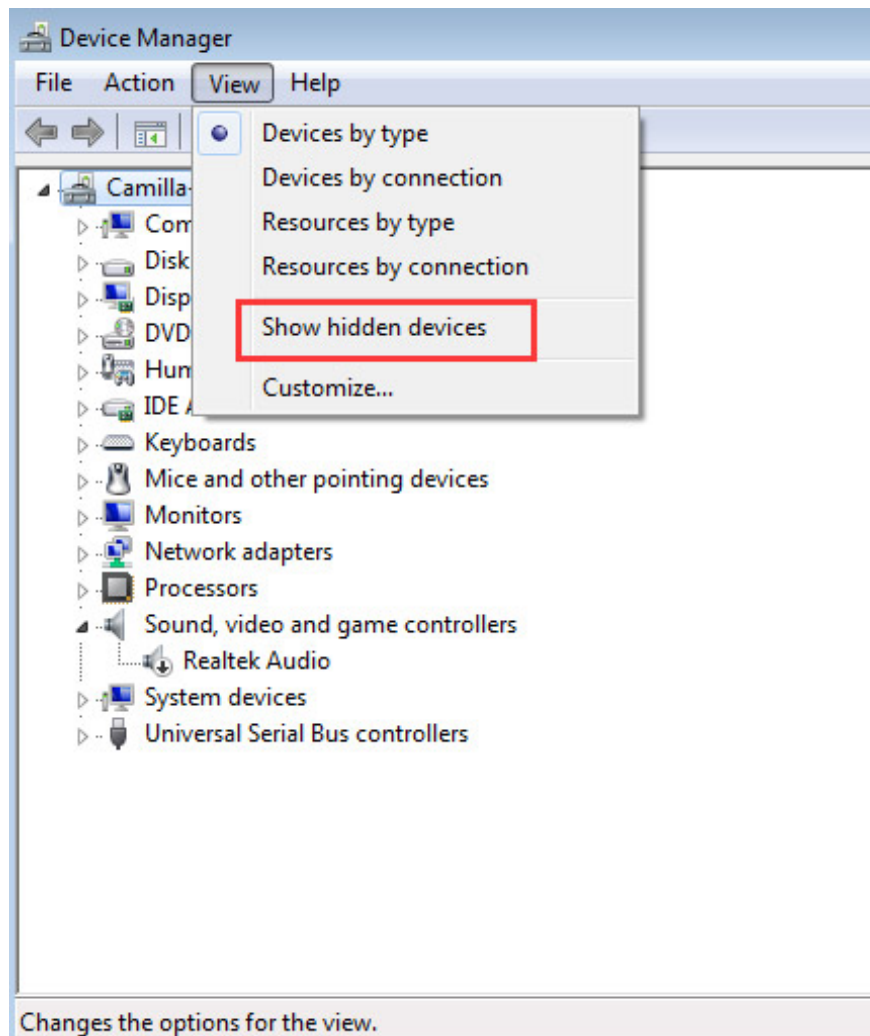
C:\Users\Canilla.Mo>set devmgr_show_nonpresent_devices=1
C:\Users\Canilla.Mo>
```

3. Enter **start devmgmt.msc** , then press **Enter** to open the **Device Manager** window .

```
C:\Windows\system32\cmd.exe
Microsoft Windows [Version 6.1.7601]
Copyright (c) 2009 Microsoft Corporation. All rights reserved.

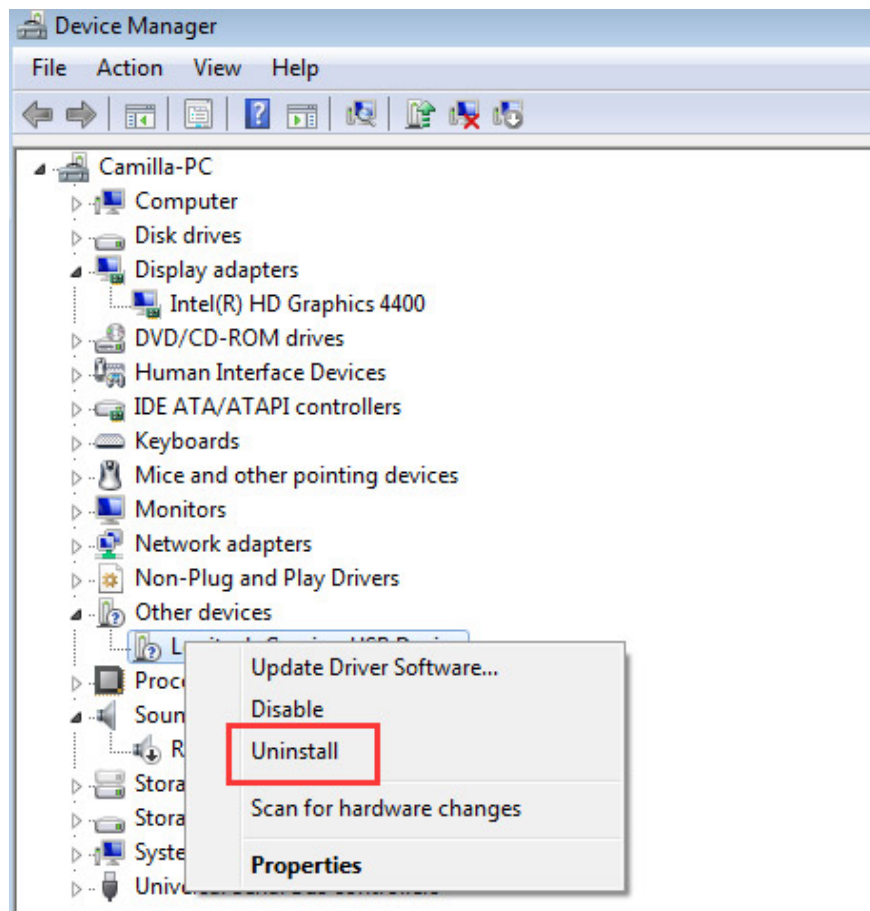
C:\Users\Canilla.Mo>set devmgr_show_nonpresent_devices=1
C:\Users\Canilla.Mo>start devmgmt.nsc
C:\Users\Canilla.Mo>_
```

4. When the Device Manager window opens, click the **View** menu and select **Show hidden devices** from the drop-down menu. After that, all devices that are not connected to the computer will be displayed, including NVIDIA graphics cards.



5. Uninstall each version of NVIDIA card and unknown device (Unknown device will be listed in **Other devices** list .).

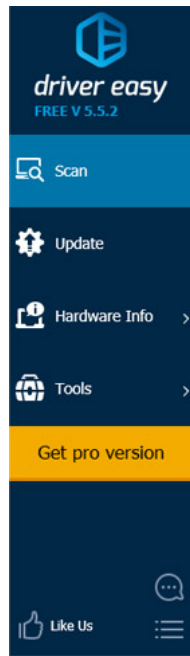
To uninstall the device, right-click the device name and select **Uninstall** from the context menu. Do the following screenshot.



Note: NVIDIA graphics card may not be displayed as a separate name. It can be named an unknown device, a video controller, etc. If you are not sure how to identify it, simply uninstall the device with a yellow mark on it.

6. After uninstalling, restart your computer then Windows will automatically reinstall the driver.

If the problem persists, you should update the driver to the latest version. If you don't have enough time, patience or computer skills to update the driver manually, you can automatically do it with Driver Easy. It's a detection, download, and (if you use Pro version) tool, install any driver updates that your computer needs.



To update drivers with Driver Easy, just click the **Scan Now** button, then when it lists the drivers you need to update, click Update. The correct drivers will be downloaded, and you can install them - either manually via Windows or automatically with Driver Easy Pro.

Method 1 will be useful in most cases. If it is not suitable for you, try the remaining methods.

Method 2: Restore BIOS to default

If you are a good computer user, you may already know how to enter the BIOS and restore BIOS to default. If not, contact the PC or technician manufacturer that you can ask for help to do this, because modifying the BIOS settings incorrectly can cause serious problems.

Method 3: Update the BIOS

You can visit the motherboard manufacturer's website or PC manufacturer website to check and download the latest BIOS version you can update. Contact the PC manufacturer or technician for help, because incorrect BIOS updates can cause serious problems.

See more:

1. Tips to take advantage of the maximum power of the graphics card
2. List of the best graphics cards according to the price segment
3. Experience upgrading computer graphics cards

You finished reading the article "**How to fix the NVIDIA graphics card error is not displayed in Device Manager**" edited by the [TipsMake](#) team. We hope this article has provided you with many useful tech tips and tricks. You can search for similar articles on tips and guides. Thank you for reading and for following us regularly.
